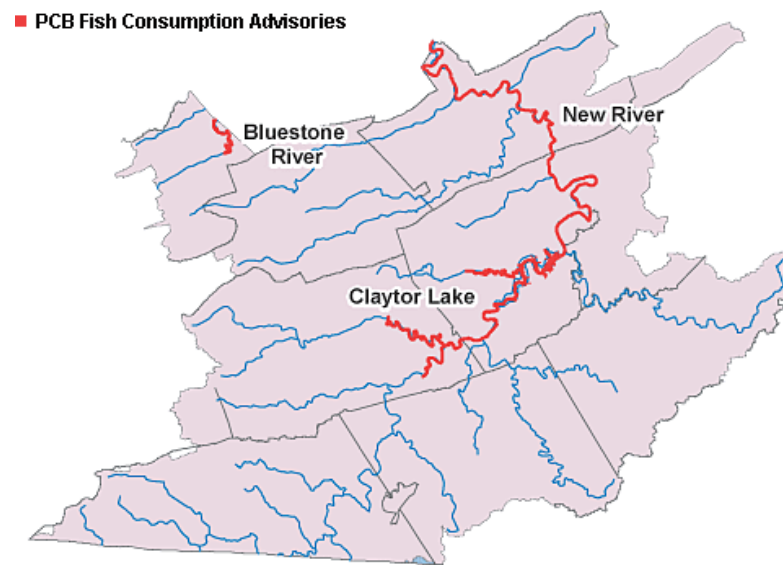











NEW RIVER BASIN



WATERBODY AND AFFECTED BOUNDARIES	AFFECTED LOCALITIES	CONTAMINANT	SPECIES	ADVISORIES/RESTRICTIONS
New River (from below Claytor Lake Dam downstream ~ 68 miles to the VA/WV state line near the town of Glen Lyn in Giles County, VA)	Giles Co., Montgomery Co., Pulaski Co., Radford City	PCBs	Carp 	DO NOT EAT
		PCBs	Flathead Catfish 	No more than two meals/month
		PCBs	Channel Catfish 	
New River/Claytor Lake (from the Rt. 77 bridge near Jackson Ferry downstream to Claytor Lake Dam including its tributaries Peak Creek up to the confluence with North Fork Peak Creek (Tract Fork) in Pulaski and Reed Creek up to the confluence with Miller near Rt. 121 bridge near Max Meadows. These river segments comprise ~68 miles).	Pulaski Co., Wythe Co.	PCBs	Carp 	No more than two meals/month
		PCBs	Smallmouth Bass 	
Bluestone River (from the Rt. 460 bridge just south of Bluefield, VA downstream ~ 9 miles to VA/WV state line near the town of Yards in Tazewell County, VA)	Tazewell Co.	PCBs	Carp 	DO NOT EAT
		PCBs	White Sucker 	No more than two meals/month
		PCBs	Rock Bass 	
		PCBs	Largemouth Bass 	

*A meal is considered to be an eight-ounce (half-pound) serving of fish.

Fish consumption advisories are reviewed annually and updated as needed. This fish consumption advisory provides meal recommendations on eating certain fish species caught from specified waterbodies. It is recommended to follow the guidance presented on this advisory to reduce your total exposure to fish contaminants. For questions about human health risks from exposure to fish contaminants, contact the [Virginia Department of Health's Toxicology Program](https://www.vdh.virginia.gov/toxicology) at (804) 864-8182. For further information regarding waterbodies sampled or the fish tissue sampling process, contact the [Virginia Department of Environmental Quality](https://www.vdh.virginia.gov/environmental-quality).