



COMMONWEALTH of VIRGINIA

Department of Health
P O BOX 2448
RICHMOND, VA 23218

TTY 7-1-1 OR
1-800-828-1120

**NOTICE AND DESCRIPTION OF SHELLFISH AREA CONDEMNATION
NUMBER 001A-036, UPPER MACHODOC CREEK**

EFFECTIVE 15 JULY 2025

Pursuant to Title 28.2, Chapter 8, §§ 28.2-803 through 28.2-808, § 32.1-20 and § 2.2-4002, B.16 of the Code of Virginia:

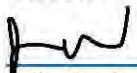
1. The "Notice and Description of Shellfish Area Condemnation Number 001A-036, Upper Machodoc Creek," effective 15 June 2024, is cancelled effective 15 July 2025.
2. Condemned Shellfish Number 001A-036, shown as Sections A through F, is hereby established effective 15 July 2025. As to Sections A through D, it shall be unlawful for any person, firm, or corporation to take shellfish from these areas for any purpose, except by permit granted by the Marine Resources Commission, as provided in § 28.2-810 of the Code of Virginia. As to Sections E and F, it shall be unlawful for any person, firm, or corporation to take shellfish from these areas for any purpose. The boundaries of these areas are shown on the map titled "Upper Machodoc Creek, Condemned Shellfish Area Number 001A-036, 15 July 2025" which is part of this notice.
3. Conditionally Approved Shellfish Area (closed status) Number 001A-036, shown as Sections M1, M2 and M3, is hereby established effective 15 July 2025. It shall be unlawful for any person, firm or corporation to take shellfish from these areas during such period for any purpose while in the closed status, except by permit granted by the Marine Resources Commission, as provided in § 28.2-810 of the Code of Virginia. The boundaries of these areas are shown on the map titled "Upper Machodoc Creek, Condemned Shellfish Area Number 001A-036, 15 July 2025" which is part of this notice.
4. The Department of Health will receive, consider and respond to petitions by any interested person at any time with respect to reconsideration or revision of this order.

BOUNDARIES OF CONDEMNED AREA NUMBER 001A-036

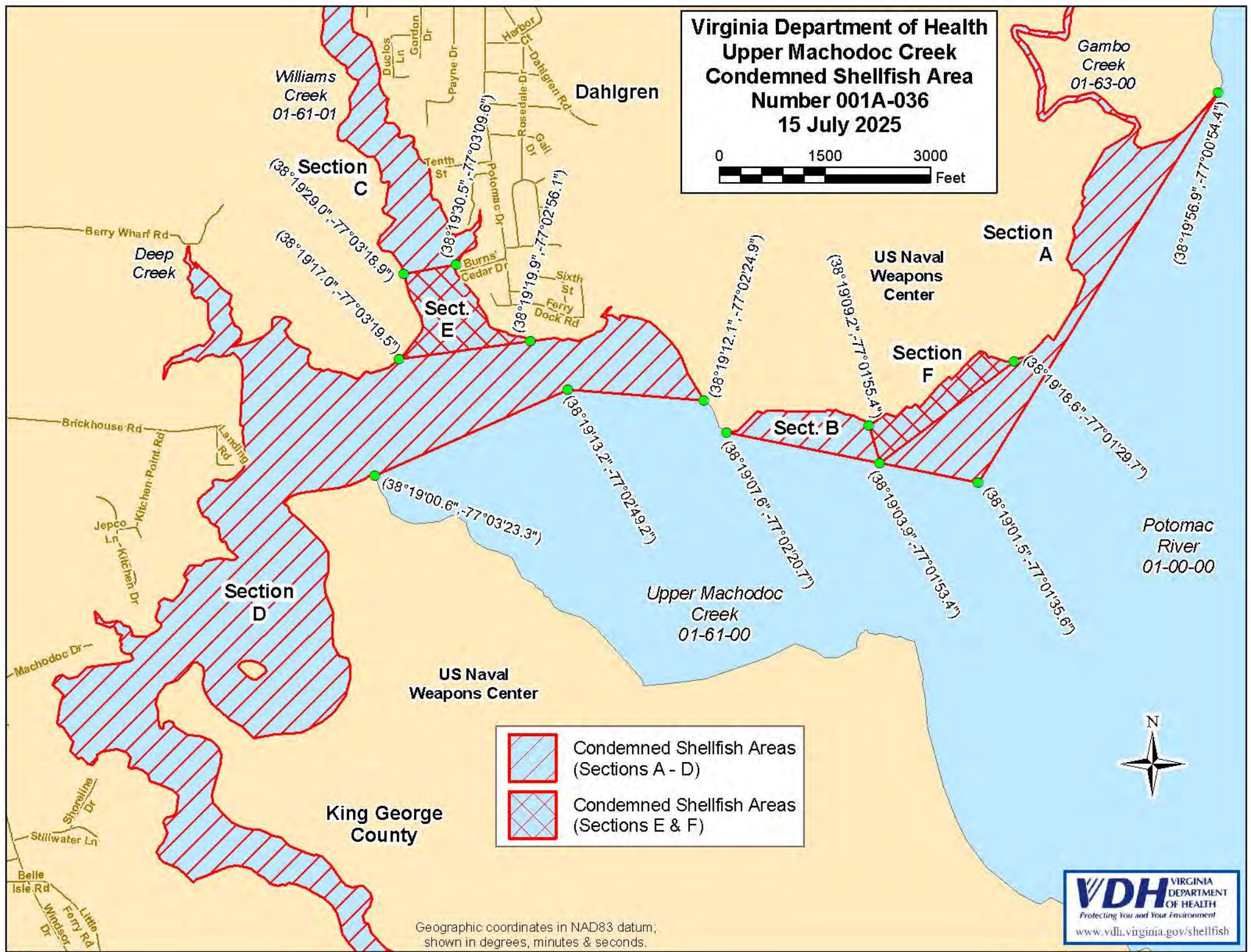
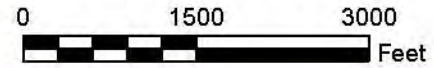
- A. The condemned area shall include that portion of Upper Machodoc Creek and the Potomac River as well as all of Gambo Creek inland of a line drawn between latitude / longitude map coordinate (38°19'56.9", -77°00'54.4"), map coordinate (38°19'01.5", -77°01'35.6"), map coordinate (38°19'03.9", -77°01'53.4"), and map coordinate (38°19'08.3", -77°01'54.8"); but excludes the area defined as Section F.
- B. The condemned area shall include that portion of Upper Machodoc Creek inland of a line drawn between latitude / longitude map coordinate (38°19'08.3", -77°01'54.8"), map



- coordinate (38°19'03.9",-77°01'53.4"), and map coordinate (38°19'07.6",-77°02'20.7").
- C. The condemned area shall include that portion of Williams Creek and its tributaries upstream of a line drawn between latitude / longitude map coordinate (38°19'29.0", -77°03'18.9") and map coordinate (38°19'30.5",-77°03'09.6").
- D. The condemned area shall include that portion of Upper Machodoc Creek and its tributaries upstream of a line drawn between latitude / longitude map coordinate (38°19'00.6",-77°03'23.3"), map coordinate (38°19'13.2",-77°02'49.2"), and map coordinate (38°19'12.1",-77°02'24.9"); but excludes the areas defined as Sections C and E.
- E. The condemned area shall include that portion of Williams Creek and its tributaries upstream of a line drawn between latitude / longitude map coordinate (38°19'17.0", -77°03'19.5") and map coordinate (38°19'19.9",-77°02'56.1"); but excludes the area defined as Section C.
- F. The condemned area shall include that portion of the Potomac River inland and upstream of a line drawn between latitude / longitude map coordinate (38°19'18.6",-77°01'29.7"), map coordinate (38°19'03.9",-77°01'53.4"), and map coordinate (38°19'09.2", -77°01'55.4").
- M1. The conditionally approved area (closed status) shall include that portion of Upper Machodoc Creek inland of a line drawn between latitude / longitude map coordinate (38°19'10.9",-77°02'07.6"), map coordinate (38°19'08.2",-77°02'07.5"), map coordinate (38°19'08.1",-77°01'59.6"), and map coordinate (38°19'10.5",-77°01'59.6"); but is shown in the report only.
- M2. The conditionally approved area (closed status) shall include that portion of Upper Machodoc Creek inland of a line drawn between latitude / longitude map coordinate (38°19'20.4",-77°02'49.4"), map coordinate (38°19'16.6",-77°02'38.4"), and map coordinate (38°19'18.1",-77°02'29.1"); but is shown in the report only.
- M3. The conditionally approved area (closed status) shall include that portion of Upper Machodoc Creek inland of a line drawn between latitude / longitude map coordinate (38°19'21.5",-77°03'02.6"), map coordinate (38°19'16.3",-77°03'03.6"), map coordinate (38°19'14.9",-77°02'52.8"), and map coordinate (38°19'20.4",-77°02'49.4"); but is shown in the report only.

Recommended by: *Danielle Schools*
Danielle Schools (Jun 24, 2025 08:12 EDT)
Director, Division of Shellfish Safety

Ordered by: 
Julie Henderson (Jun 24, 2025 09:16 EDT) 06/24/2025
Director, Office of Environmental Health Services Date

Virginia Department of Health
Upper Machodoc Creek
Condemned Shellfish Area
Number 001A-036
15 July 2025



-  Condemned Shellfish Areas (Sections A - D)
-  Condemned Shellfish Areas (Sections E & F)

Geographic coordinates in NAD83 datum;
shown in degrees, minutes & seconds.