



## COMMONWEALTH of VIRGINIA

Department of Health  
P O BOX 2448  
RICHMOND, VA 23218

TTY 7-1-1 OR  
1-800-828-1120

### **NOTICE AND DESCRIPTION OF SHELLFISH AREA CONDEMNATION NUMBER 040-085, PEPPER CREEK AND VICINITY**

**EFFECTIVE 15 NOVEMBER 2025**

Pursuant to Title 28.2, Chapter 8, §§ 28.2-803 through 28.2-808, § 32.1-20, and § 9-6.14:4.1, B.16 of the Code of Virginia:

1. The "Notice and Description of Shellfish Area Condemnation Number 040-085, Pepper Creek and Vicinity", effective 15 October 2020, is cancelled effective 15 November 2025.
2. Condemned Shellfish Area Number 040-085, shown as Section A, is hereby established effective 15 November 2025. It shall be unlawful for any person, firm, or corporation to take shellfish from this area for any purpose, except by permit granted by the Marine Resources Commission, as provided in § 28.2-810 of the Code of Virginia. The boundaries of this area are shown on the map titled "Pepper Creek and Vicinity, Condemned Shellfish Area Number 040-085, 15 November 2025" which is a part of this notice.
3. Conditionally Approved Shellfish Area (Closed Status) Number 040-085, shown as Section M1, is hereby established effective 15 November 2025, and shall remain in force annually thereafter for the period beginning the first day of April through the last day of October until rescinded. It shall be unlawful for any person, firm or corporation to take shellfish from this area during such period for any purpose while in the closed status, except by permit granted by the Marine Resources Commission, as provided in § 28.2-810 of the Code of Virginia. The boundaries of this area are shown on the map titled "Pepper Creek and Vicinity, Condemned Shellfish Area Number 040-085, 15 November 2025" which is part of this notice.
4. The Department of Health will receive, consider and respond to petitions by any interested person at any time with respect to reconsideration or revision of this order.

### **BOUNDARIES OF CONDEMNED AREA NUMBER 040-085**

- A. The condemned area shall include that portion of Sloop Creek upstream of a line drawn between latitude/longitude map coordinate (37°21'10.1", -76°19'32.4") and map coordinate (37°21'09.5", -76°19'30.8").

- M1. The conditionally approved (seasonally closed status) area shall include all of the western branch of Davis Creek upstream of a line drawn between latitude/longitude map coordinate (37°19'48.2", -76°17'59.8") and map coordinate (37°19'52.2", -76°17'56.0").

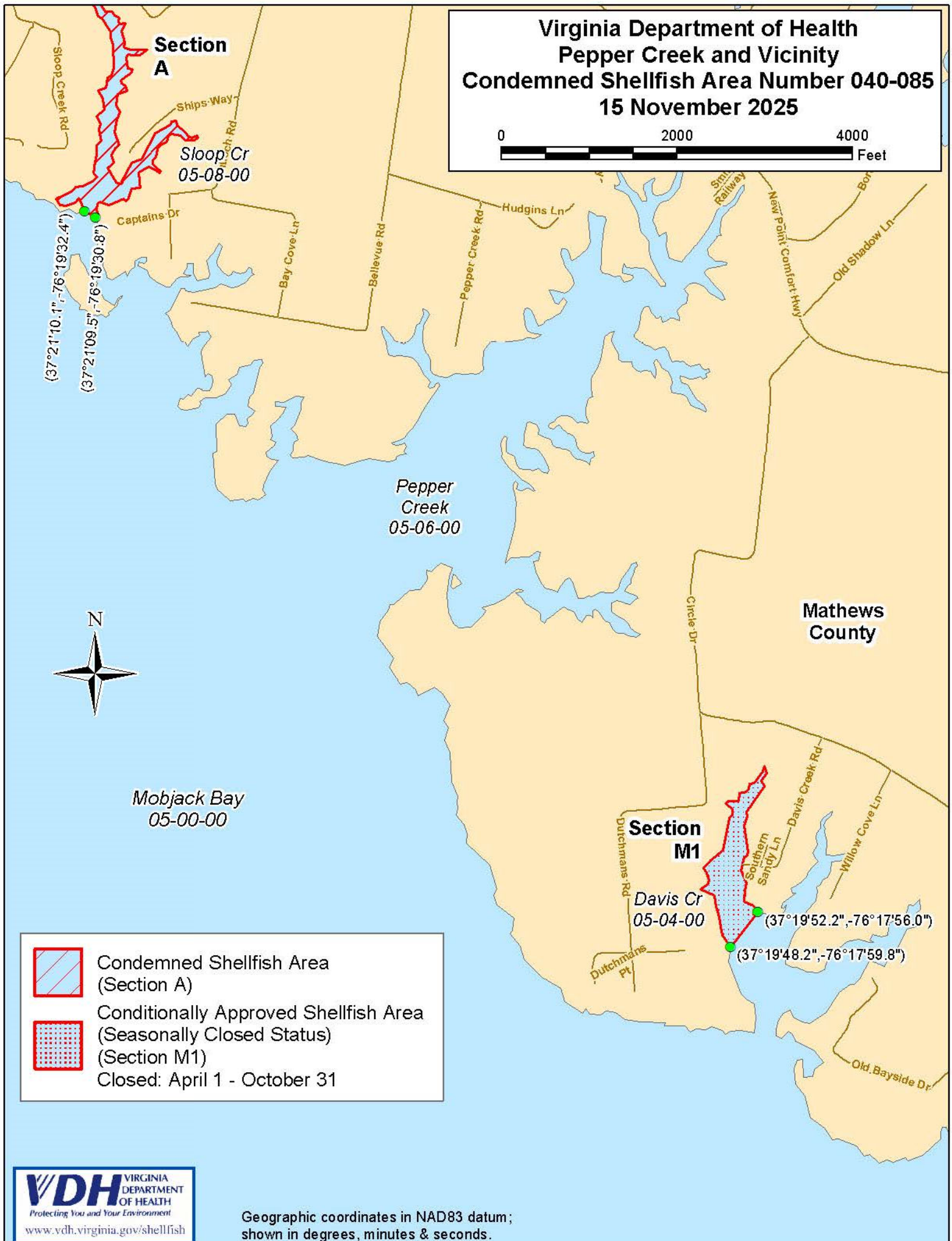
Recommended by: *Danielle Schools*  
[Danielle Schools \(Oct 15, 2025 11:17:31 EDT\)](#)  
Director, Division of Shellfish Safety

Ordered by: *Julie Henderson*  
[Julie Henderson \(Oct 15, 2025 13:35:04 EDT\)](#)  
Director, Office of Environmental Health Services

Oct 15, 2025  
Date

**Virginia Department of Health  
Pepper Creek and Vicinity  
Condemned Shellfish Area Number 040-085  
15 November 2025**

0 2000 4000  
Feet



Condemned Shellfish Area  
(Section A)



Conditionally Approved Shellfish Area  
(Seasonally Closed Status)  
(Section M1)  
Closed: April 1 - October 31