



## COMMONWEALTH of VIRGINIA

Department of Health  
P O BOX 2448  
RICHMOND, VA 23218

TTY 7-1-1 OR  
1-800-828-1120

### **NOMINI AND CURRIOMAN BAYS Growing Area # 004 Westmoreland County Shoreline Sanitary Survey**

**Date:** 25 September 2024

**Survey Period:** July 1 – September 3, 2024

**Total Number of Samples Analyzed, and Sites Evaluated:** 136

**Surveyed By:** N. Shultz, J. Fleiger, M. Farnham, J. Friedman, I. Geeson

#### **SECTION A: GENERAL**

This survey area extends from the shore at North Independence Drive (Route 1601) and ending at Kingcopsico Point at the end of King Copsico Farm Road, including the Potomac River shoreline and the tributaries of Nomini and Currioman Bays. The topography of the area begins with an elevation of 5' at the shoreline of White Point and 10' at Currioman Landing reaching to a maximum of 100-160' inland along the first order streams.

Glebe Harbor and Cabin Point communities are now served by a sanitary sewer system conveyed to Coles Point wastewater treatment plant, located in Growing Area # 006. Part of this infrastructure runs along Mt Holly Rd upstream of Buckner Creek. The rest of the survey area utilize onsite (septic) treatment systems.

Meteorological data indicated that 8.64" of rain fell during the survey period. A monthly breakdown follows:

Date range	Cumulative Rainfall	Avg. Monthly rainfall (2013-2023)
July 2024	4.5"	5.26"
August 2024	4.0"	4.2"
September 1-3, 2024	0.14"	NA Partial Month

For this survey, nearshore seawater stations were established to survey the full extent of navigable waters beyond routine classification stations. Stations were created in closer proximity to the shoreline and farther upstream than routine stations and are intended to evaluate drainage entry points of potential point and nonpoint source pollution. Data from these stations were analyzed to compare fecal indicator bacteria (FIB) concentrations within the waterway and identify potential onshore contamination sources.

The table below shows hydrographic data, sampling times, and the range of enterococcus concentrations measured. Maps of the enterococcus sampling locations are provided at the end of this report.

Growing Area # 004 Nearshore and Onshore Sampling								
Sample dates	# of boats	High Tide*	Ebb Current **	Sampling time	Enterococcus range (MPN/100ml)	Day of	Previous 24 hrs	Previous 7 days
July 17	2	13:07	11:31	09:32 – 13:23	<10 - 52	0.1"	0	2.02"
July 18	2	13:57	12:33	10:06 – 12:51	<10 - 109	0.11"	0.1"	2.12"
July 25	1	06:56	06:54	10:24 – 12:43	<10 - 573	0.13"	0.29"	1.24"
Aug. 15	Onshore sample (Ditch)	NA	NA	10:30	906	0	0	0.67"
Aug. 19	1	03:19	03:32	10:57 – 13:09	<10 - 52	0.22"	0.72"	1.48"
Total rainfall for sampling period (July 17 – August 19, 2024) 4.87"								

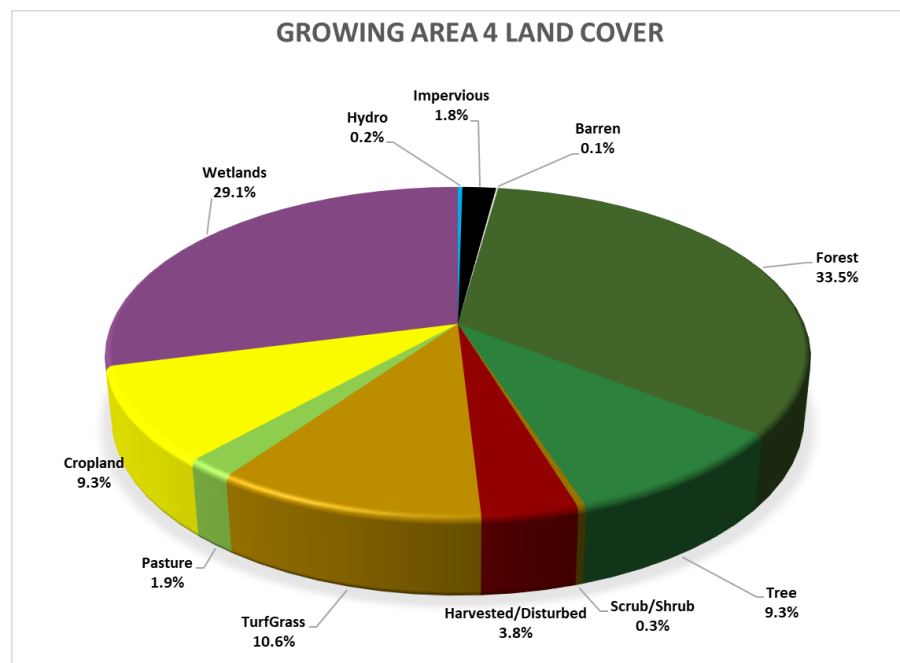
\* High Tide predicted from Mount Holly, Nomini Creek Va NOAA ID 8635409.

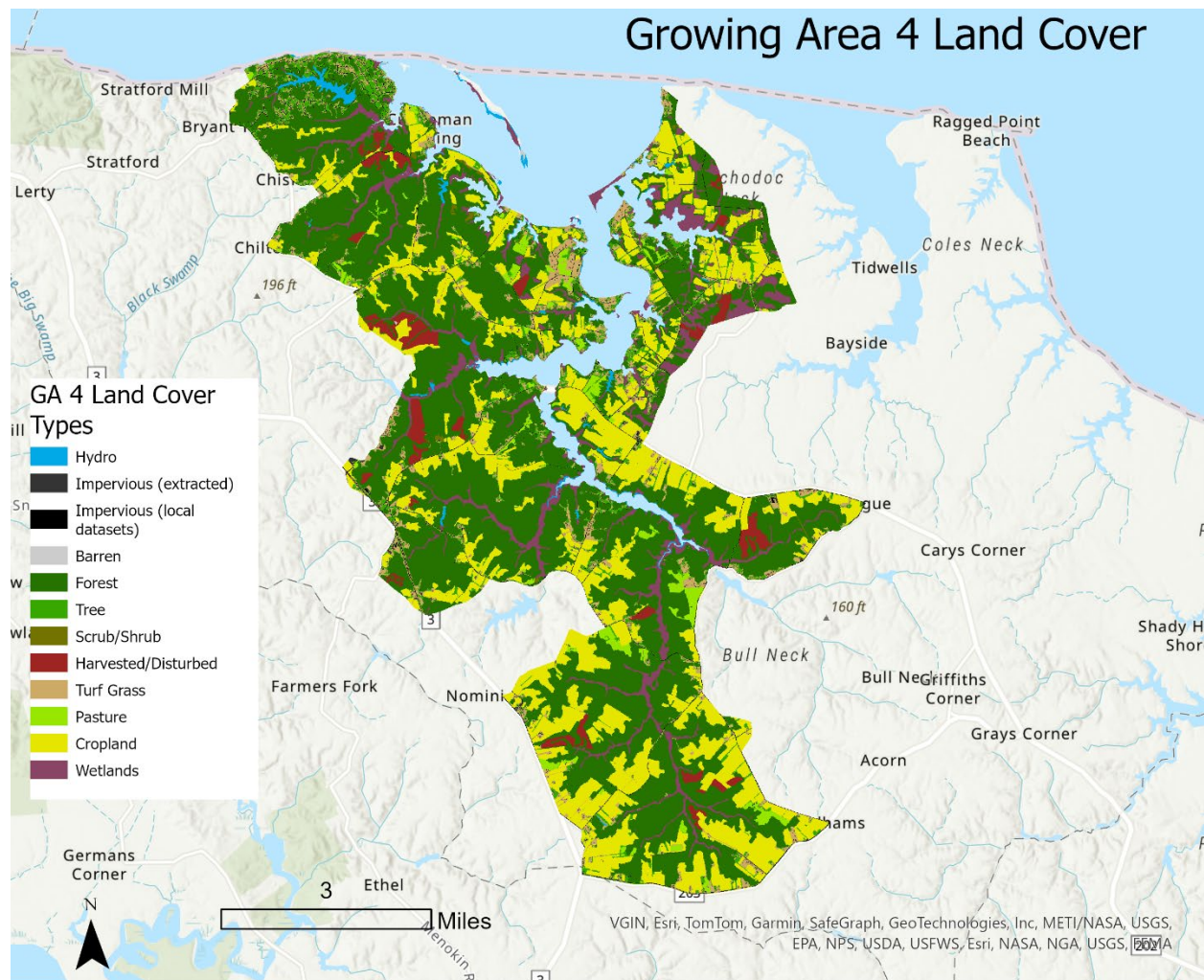
\*\* Slack Ebb current predicted from White Point, Nomini Creek entrance NOAA ID ACT5816.

The 2020 census reported that there are an estimated 3943 residents across 2404 housing units in Growing Area # 004.

<https://www.census.gov/geographies/reference-maps/2020/geo/2020-census-block-maps.html>

Within Growing Area # 004 there are 4412 land parcels. Land Cover data are shown below:





Source: [https://gismaps.vdem.virginia.gov/Download/Land\\_Cover/County\\_Report.pdf](https://gismaps.vdem.virginia.gov/Download/Land_Cover/County_Report.pdf)

Information in this report is gathered by and primarily for use by the Division of Shellfish Safety, Virginia Department of Health, in order to fulfill its responsibilities of shellfish growing area supervision and classification. However, the data are made available to various agencies participating in shellfish program coordinated activities or other interested parties.

Copies of VPDES permits and inspections are available at the Department of Environmental Quality. A directory and interactive map are available via the internet at <https://www.deq.virginia.gov/permits/water/surface-waters-vpdes> and <https://geohub-vadeq.hub.arcgis.com/pages/Water%20Datasets>

Copies of Bacteriological, Hydrographic and Shellfish Closure data are available at the area office for review. Copies of the current condemnation notices and maps are available via the Internet at <https://www.vdh.virginia.gov/environmental-health/environmental-health-services/shellfish-safety/>

This report lists only those properties which have a sanitary deficiency or have other environmental significance. **“DIRECT”** indicates that the significant activity or deficiency has a direct impact on shellfish waters.

## SECTION B: SEWAGE POLLUTION SOURCES

[illegible]

# Shoreline Survey # 004

## SECTION C: NONSEWAGE WASTE SITES

[illegible]

## SECTION D: BOATING ACTIVITIES

[illegible]

# Shoreline Survey # 004

## SECTION E: ANIMALS PRESENT

[illegible]

## SUMMARY

Growing Area # 004  
Nomini and Currioman Bays  
25 September 2024

### SECTION B: SEWAGE POLLUTION SOURCES

#### 1. SEWAGE TREATMENT FACILITIES

0 – DIRECT – None.  
0 – INDIRECT – None.  
0 – B.1. TOTAL

#### 2. ON-SITE SEWAGE DEFICIENCIES – Correction of deficiencies in this section is the responsibility of the local health department.

0 – CONTRIBUTES POLLUTION, DIRECT – None.  
0 – CONTRIBUTES POLLUTION, INDIRECT – None.  
0 – CP – (Kitchen or Laundry Wastes), DIRECT – None.  
0 – CP – (Kitchen or Laundry Wastes), INDIRECT – None.  
0 – NO FACILITIES, DIRECT – None.  
0 – NO FACILITIES, INDIRECT – None.  
0 – B.2. TOTAL

#### 3. POTENTIAL POLLUTION, INDIRECT – Periodic surveillance of these properties will be maintained to determine any status change.

2 – POTENTIAL POLLUTION – # N39A, N46A

### SECTION C: NON-SEWAGE WASTE SITES

#### 1. INDUSTRIAL WASTE SITES

0 – DIRECT – None.  
0 – INDIRECT – None.  
0 – C.1. TOTAL

#### 2. SOLID WASTE SITES

0 – DIRECT – None  
2 – INDIRECT – # 217, 259  
2 – C.2. TOTAL

#### 3. STORMWATER OUTFALLS

0 – DIRECT – None.  
0 – INDIRECT – None.  
0 – E. TOTAL

### SECTION D: BOATING ACTIVITY, INDIRECT

1 – MARINA – # 189  
6 – UNDER SURVEILLANCE – # 236, 389, 642, 643, 664, G2  
7 – D. TOTAL

### SECTION E: ANIMALS PRESENT

0 – DIRECT – None.  
0 – INDIRECT – None.  
0 – E. TOTAL

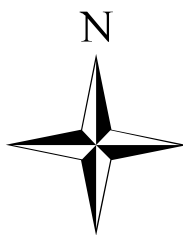
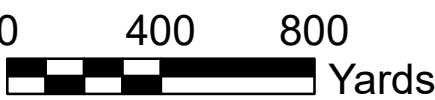


Virginia Department of Health  
Division of Shellfish Sanitation

Nomini and Currioman Bays  
# 004  
Shoreline Sanitary Survey

Westmoreland County

Date: 25 September 2024  
Survey By: N. Shultz, J. Fleiger, M. Farnham,  
J. Friedman, & I. Geeson  
Total Number of Samples Analyzed, and  
Sites Evaluated: 136



**Legend**

**Seawater Sampling Stations**

- Active
- Inactive
- Sewered Areas
- Boat Ramps (DGP)

**Shoreline Survey Deficiencies**

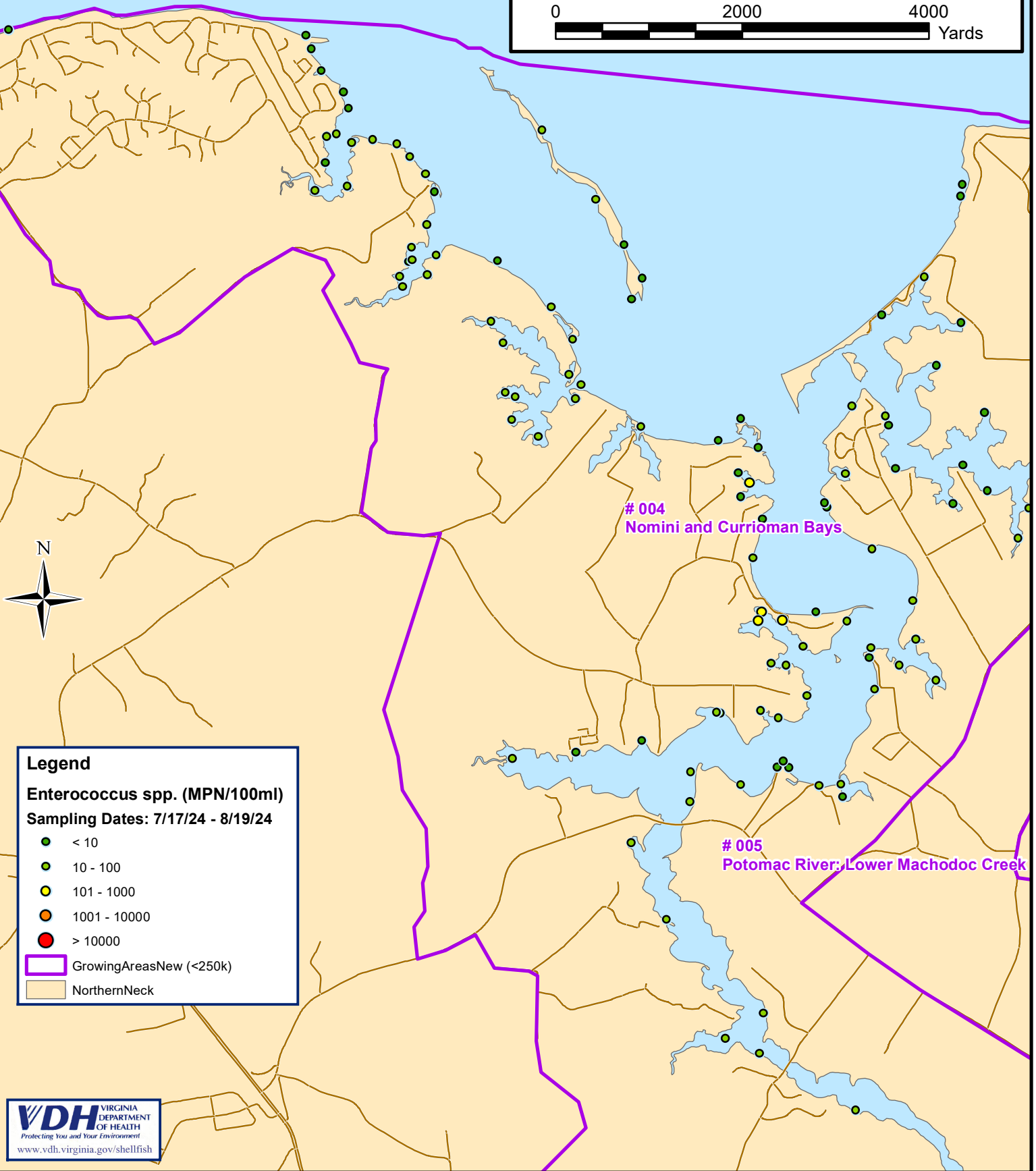
- Sewage Treatment Facility - Direct
- Sewage Treatment Facility - Indirect
- Contributes Pollution - Direct
- Contributes Pollution - Indirect
- Contributes Pollution (Kitchen or Laundry wastes) - Direct
- Contributes Pollution (Kitchen or Laundry wastes) - Indirect
- No Facilities - Direct
- No Facilities - Indirect
- Potential Pollution
- Industrial Wastes, Direct
- Industrial Wastes, Indirect
- Solid Waste Dumpsite - Direct
- Solid Waste Dumpsite - Indirect
- Stormwater, Direct
- Stormwater, Indirect
- Boating Activity
- Contributes Animal Pollution - Direct
- Contributes Animal Pollution - Indirect



# Near Shore Enterococcus Sampling Growing Area # 004 - Nomini & Curriomand Bays Westmoreland County

\* Highest value was 573 collected at station # N59 on 7/25/24.

0 2000 4000  
Yards



## Legend

Enterococcus spp. (MPN/100ml)

Sampling Dates: 7/17/24 - 8/19/24

- < 10
- 10 - 100
- 101 - 1000
- 1001 - 10000
- > 10000

GrowingAreasNew (<250k)  
NorthernNeck