



## COMMONWEALTH of VIRGINIA

Department of Health  
P O BOX 2448  
RICHMOND, VA 23218

TTY 7-1-1 OR  
1-800-828-1120

### **LARANGE AND ROBINSON CREEKS Growing Area # 028 Middlesex County Shoreline Sanitary Survey**

**Date:** 23 April 2024

**Survey Period:** September 27 – December 6, 2023

**Total Number of Properties Surveyed and Near-shore Samples Collected:** 202

**Surveyed By:** J. Hudnall, J. Freidman, & M. Farham

#### **SECTION A: GENERAL**

This survey area extends from Reference Point 29 at Corbin Hall Road extended at Goose Point to Reference Point 30 at Rappahannock Avenue in the town of Urbanna, including the Rappahannock River shoreline between these two points, Lagrange Creek (South Branch), Robinson Creek, Perkins Creek, and their tributaries.

The area is characterized by elevations that rise sharply from the shoreline adjacent to the Rappahannock River and its tributaries to approximately 20' and then level out to form plateau areas that extend inland.

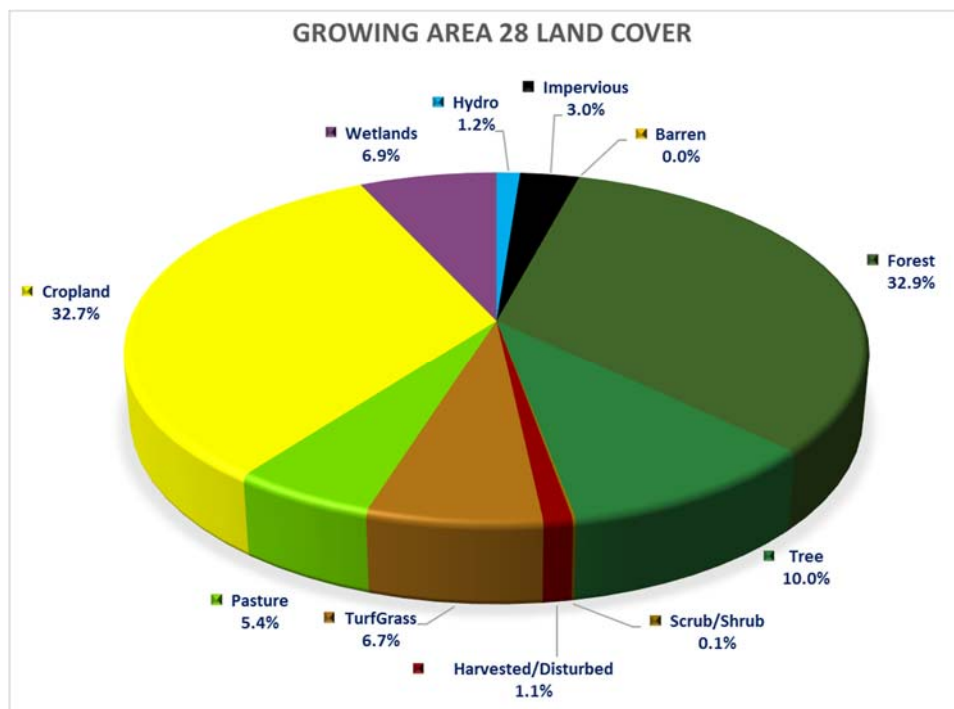
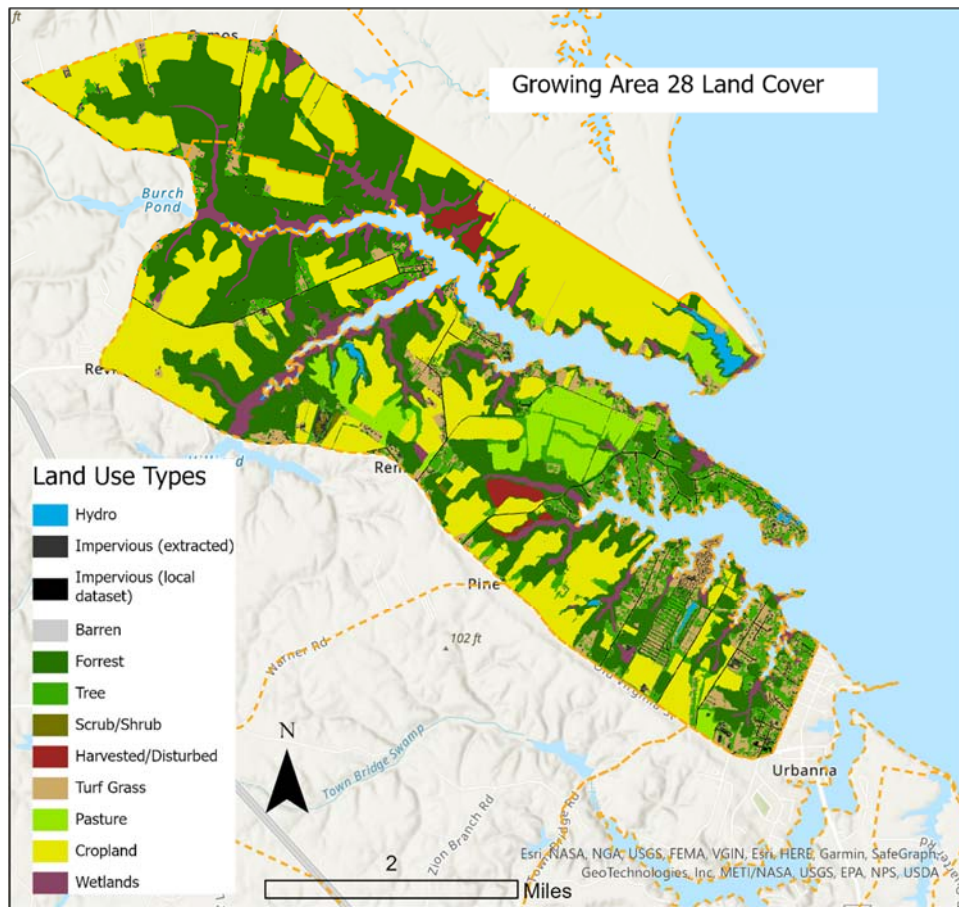
Meteorological data indicated that 8.8" of rain fell during the survey period. Monthly breakdown is as follows:

Date Range	Cumulative Rainfall (inches)	Average Monthly rainfall 2012-2022
9/27-30/2023	0"	NA-partial month
10/2023	1.46"	4.78"
11/2023	1.9"	2.87"
12/1-19/2023	5.44"	NA-partial month

The survey area falls within Middlesex County. Since the 2010 census Middlesex County population remains stable with about 11,000 residents in 7173 housing units. In 2022, 45 building permits were issued.

<https://www.census.gov/quickfacts/fact/table/US/PST045221>

Within Growing Area # 028, there are 1210 land parcels. Land Cover data are shown below.



Source: [https://gismaps.vdem.virginia.gov/Download/Land\\_Cover/County\\_Report.pdf](https://gismaps.vdem.virginia.gov/Download/Land_Cover/County_Report.pdf)

For this survey, nearshore seawater stations were established to survey the full extent of navigable waters beyond routine classification stations. Stations were created in closer proximity to the shoreline and farther upstream than routine stations and are intended to evaluate drainage entry points of potential point and nonpoint source pollution. Station data were analyzed to compare relative concentrations of fecal indicator bacteria within the waterway to identify potential onshore sources of contamination.

Hydrographic data, sampling times and range of enterococcus concentrations measured are shown in the table below. Maps of the enterococcus sampling are shown at the conclusion of this report.

Growing Area # 028 Nearshore Sampling						Rainfall in inches	
Sample dates	High Tide*	Ebb Current**	Sampling time	Enterococcus range (MPN/100ml)	Day of	Previous 24 hours	Previous 7 days
09/27/23	10:41	13:02	9:09 – 11:33	9 - 185	0	0.03	2.16
09/28/23	11:34	14:02	9:02 – 10:40	9 - 591	0	0	2.16
10/11/23	10:31	12:56	9:00 – 12:50	9 - 2282	0	0	0.13
Total rainfall for nearshore sampling period (9/27/2023 - 10/11/2023) 0.13"							

\* High tide estimated from Urbanna Creek Entrance NOAA ID 2169.

\*\*Slack ebb current estimated Waterview NOAA ID 5486.

The town of Urbanna, parts of Beth-Page campground, and the subdivisions of Kilmer's Point and Cedar Point are served by sewage treatment plants. The rest of the homes are served by onsite treatment systems.

Information in this report is gathered by and primarily for use by the Division of Shellfish Safety, Virginia Department of Health, to fulfill its responsibilities of shellfish growing area supervision and classification. However, the data are made available to various agencies participating in shellfish program coordinated activities or other interested parties.

Copies of VPDES permits and inspections are available at the Department of Environmental Quality. A directory and interactive map are available via the internet at <https://www.deq.virginia.gov/permits/water/surface-waters-vpdes> and <https://geohub-vadeq.hub.arcgis.com/pages/Water%20Datasets>

This report lists only those properties which have a sanitary deficiency or have other environmental significance. **"DIRECT"** indicates that the significant activity or deficiency has a direct impact on shellfish waters.

Copies of the current condemnation notices and maps are available via the Internet at <https://www.vdh.virginia.gov/environmental-health/environmental-health-services/shellfish-safety/>.

## SUMMARY

Growing Area # 028  
Lagrange and Robinson Creeks  
23 April 2024

### SECTION B: SEWAGE POLLUTION SOURCES

#### 1. SEWAGE TREATMENT FACILITIES

0 – DIRECT – None.  
1 – INDIRECT – # 220  
1 – B.1. TOTAL

#### 2. ON-SITE SEWAGE DEFICIECIES – Correction of deficiencies in this section is the Responsibility of the local health department.

0 – CONTRIBUTES POLLUTION, DIRECT – None  
0 – CONTRIBUTES POLLUTION, INDIRECT – None.  
0 – CP (Kitchen or Laundry Wastes), DIRECT – None.  
0 – CP (Kitchen or Laundry Wastes), INDIRECT – None.  
0 – NO FACILITIES, DIRECT – None.  
0 – NO FACILITIES, INDIRECT – None.  
0 – B.2. TOTAL

#### 3. POTENTIAL POLLUTION – Periodic surveillance of these properties will be maintained to determine any status change. 0 – POTENTIAL POLLUTION – None.

### SECTION C: NON-SEWAGE WASTE SITES

#### 1. INDUSTRIAL WASTE SITES

0 – DIRECT – None.  
0 – INDIRECT – None.  
0 – C.1. TOTAL

#### 2. SOLID WASTE SITES

0 – DIRECT – None.  
1 – INDIRECT – # 109  
1 – C.2. TOTAL

#### 3. STORMWATER OUTFALLS

0 – DIRECT – None.  
0 – INDIRECT – None.  
0 – E. TOTAL

### SECTION D: BOATING ACTIVITY

4 – MARINAS – # 161, 260, 343, 399  
4 – UNDER SURVEILLANCE – # 168, 261, 279, 354  
8 – D. TOTAL

### SECTION E: ANIMALS PRESENT

0 – DIRECT – None.  
3 – INDIRECT – # 1, 55, 195  
3 – E. TOTAL

# Shoreline Survey # 028

## SECTION B: SEWAGE POLLUTION SOURCES

[illegible]

# Shoreline Survey # 028

## SECTION C: NONSEWAGE WASTE SITES

[illegible]

## SECTION D: BOATING ACTIVITY

[illegible]

# Shoreline Survey # 028

## SECTION E: ANIMALS PRESENT

[illegible]



## SUMMARY

Growing Area # 028  
Lagrange and Robinson Creeks  
23 April 2024

### SECTION B: SEWAGE POLLUTION SOURCES

#### 1. SEWAGE TREATMENT FACILITIES

0 – DIRECT – None.  
1 – INDIRECT – # 220  
1 – B.1. TOTAL

#### 2. ON-SITE SEWAGE DEFICIECIES – Correction of deficiencies in this section is the Responsibility of the local health department.

0 – CONTRIBUTES POLLUTION, DIRECT – None  
0 – CONTRIBUTES POLLUTION, INDIRECT – None.  
0 – CP (Kitchen or Laundry Wastes), DIRECT – None.  
0 – CP (Kitchen or Laundry Wastes), INDIRECT – None.  
0 – NO FACILITIES, DIRECT – None.  
0 – NO FACILITIES, INDIRECT – None.  
0 – B.2. TOTAL

#### 3. POTENTIAL POLLUTION – Periodic surveillance of these properties will be maintained to determine any status change.

0 – POTENTIAL POLLUTION – None.

### SECTION C: NON-SEWAGE WASTE SITES

#### 1. INDUSTRIAL WASTE SITES

0 – DIRECT – None.  
0 – INDIRECT – None.  
0 – C.1. TOTAL

#### 2. SOLID WASTE SITES

0 – DIRECT – None.  
1 – INDIRECT – # 109  
1 – C.2. TOTAL

#### 3. STORMWATER OUTFALLS

0 – DIRECT – None.  
0 – INDIRECT – None.  
0 – E. TOTAL

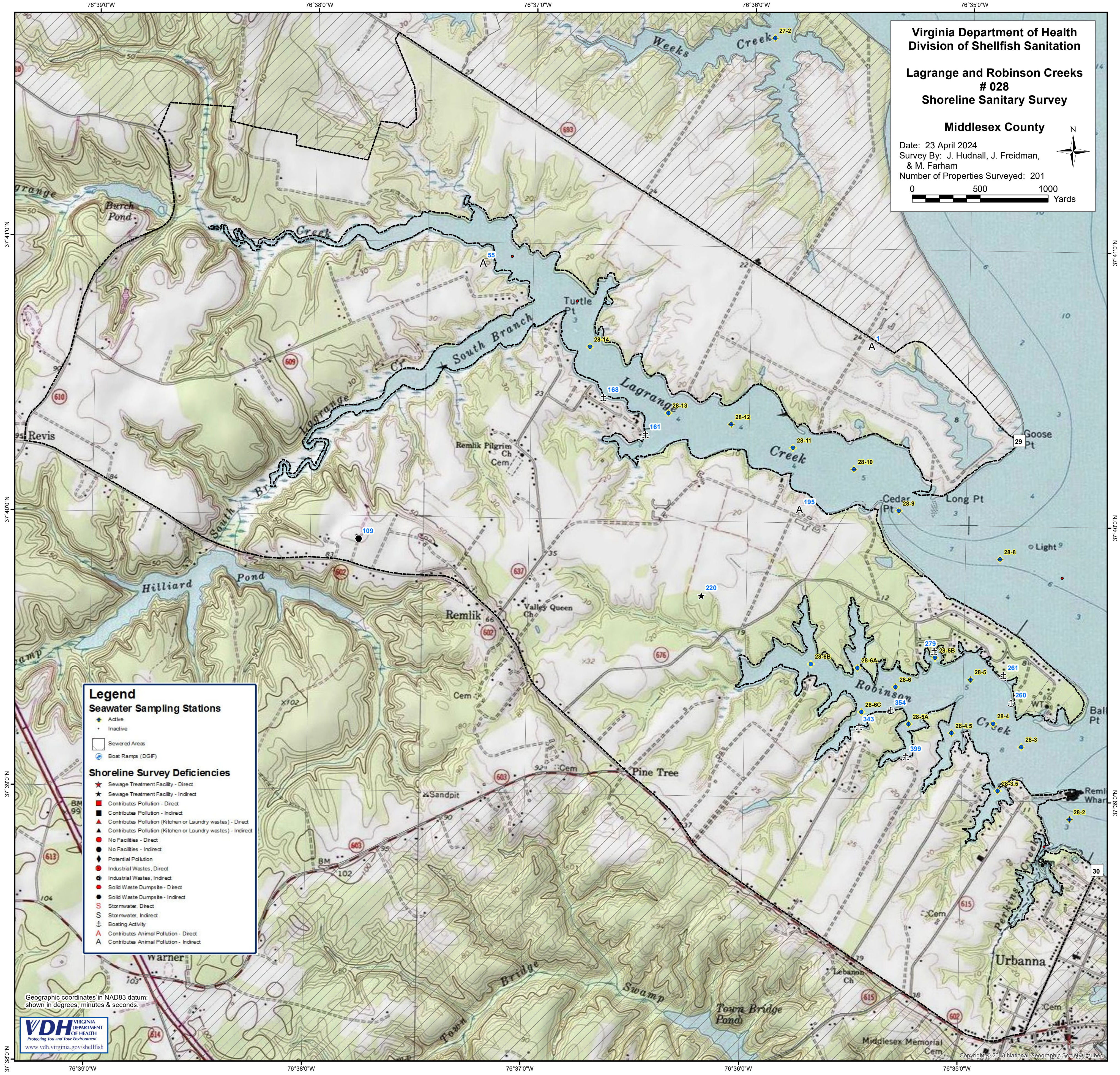
### SECTION D: BOATING ACTIVITY

4 – MARINAS – # 161, 260, 343, 399  
4 – UNDER SURVEILLANCE – # 168, 261, 279, 354  
8 – D. TOTAL

### SECTION E: ANIMALS PRESENT

0 – DIRECT – None.  
3 – INDIRECT – # 1, 55, 195  
3 – E. TOTAL



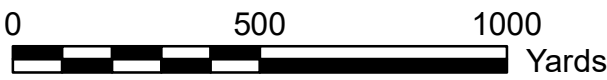


Virginia Department of Health  
Division of Shellfish Sanitation

Lagrange and Robinson Creeks  
# 028  
Shoreline Sanitary Survey

Middlesex County

Date: 23 April 2024  
Survey By: J. Hudnall, J. Freidman,  
& M. Farham  
Number of Properties Surveyed: 201



Legend

Seawater Sampling Stations

- Active
- Inactive
- Sewered Areas
- Boat Ramps (DGIF)

Shoreline Survey Deficiencies

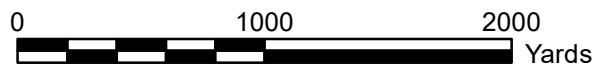
- Sewage Treatment Facility - Direct
- Sewage Treatment Facility - Indirect
- Contributes Pollution - Direct
- Contributes Pollution - Indirect
- Contributes Pollution (Kitchen or Laundry wastes) - Direct
- Contributes Pollution (Kitchen or Laundry wastes) - Indirect
- No Facilities - Direct
- No Facilities - Indirect
- Potential Pollution
- Industrial Wastes, Direct
- Industrial Wastes, Indirect
- Solid Waste Dumpsite - Direct
- Solid Waste Dumpsite - Indirect
- Stormwater, Direct
- Stormwater, Indirect
- Boating Activity
- Contributes Animal Pollution - Direct
- Contributes Animal Pollution - Indirect

Geographic coordinates in NAD83 datum;  
shown in degrees, minutes & seconds.



# Near Shore Enterococcus Sampling Growing Area # 028 - LaGrange & Robinson Creeks Middlesex County

\* Highest value was 2282 at station # M13 collected on 10/11/23.



## Legend

Enterococcus spp. (MPN/100ml)

Sampling Dates: 9/27/23 - 10/11/23

- < 10
- 10 - 100
- 101 - 1000
- 1001 - 10000
- > 10000