



## COMMONWEALTH of VIRGINIA

Department of Health  
P O BOX 2448  
RICHMOND, VA 23218

TTY 7-1-1 OR  
1-800-828-1120

### LOCKLIES AND MILL CREEKS Growing Area # 031 Middlesex County Shoreline Sanitary Survey

**Date:** 17 June 2024

**Survey Period:** December 8, 2023 – January 31, 2024

**Total Number Samples Collected and Properties Visited:** 40

**Surveyed By:** A. Wood & I. Geeson

#### SECTION A: GENERAL

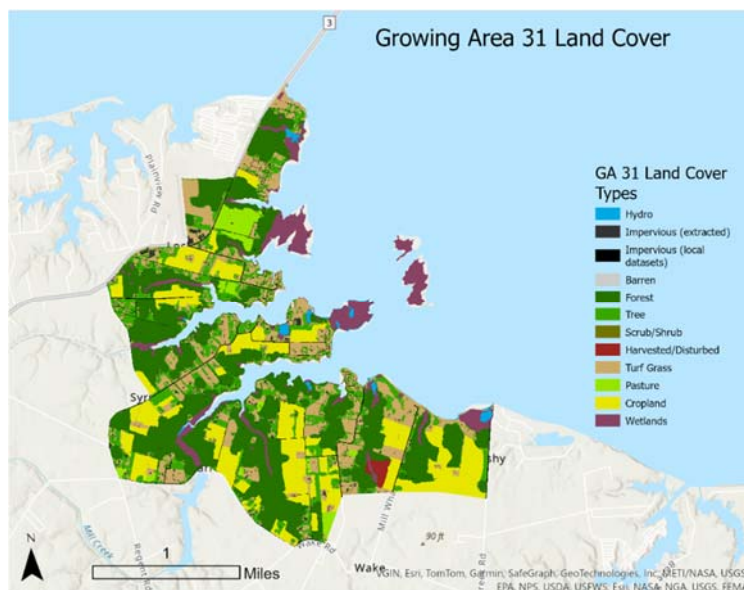
This survey area extends from Reference Point 32 at the Norris Bridge on Route 3 to Reference Point 33 at the end of Route 628, including the Rappahannock River between these points, Locklies Creek, Mill Creek, Duck Pond and all of their tributaries.

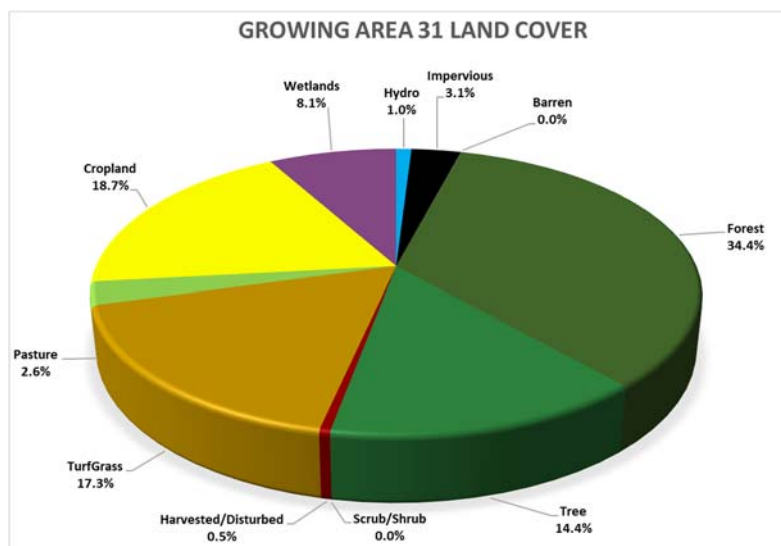
The topography of the area varies in elevation less than ten feet around the shoreline to a maximum of sixty feet at the outer edge of the shoreline boundary.

The 2020 census reported that there are an estimated 885 residents across 562 housing units in Growing Area 31.

<https://www.census.gov/geographies/reference-maps/2020/geo/2020-census-block-maps.html>

Within Growing Area 55, there are 888 land parcels. Land Cover data are shown below.





Source: [https://gismaps.vdem.virginia.gov/Download/Land\\_Cover/County\\_Report.pdf](https://gismaps.vdem.virginia.gov/Download/Land_Cover/County_Report.pdf)

Meteorological data indicated that 10.53" of rain fell during the survey period. Monthly breakdown is as follows:

Date Range	Cumulative Rainfall	Avg Monthly rainfall 2012-2022
Dec. 8-31, 2023	5.64"	N/A (partial month)
January 2024	4.89"	3.80"

Growing Area # 31 Nearshore Sampling						Rainfall in inches	
Sample dates	High Tide*	Ebb Current**	Sampling times	Enterococcus range (MPN/100ml)	Day of	Previous 24 hours	Previous 7 days
1/2/24	03:29	06:00	09:45 - 13:07	<10 - 20	0.08"	0.05"	0.99"
Total rainfall for nearshore sampling period				0.08"			

\* High tide estimated from Grey's Point (NOAA ID 8636654).

\*\* Slack ebb current estimated from Orchard Point, 1.0 mile south of (NOAA ID ACT5551).

Information in this report is gathered by and primarily for use by the Division of Shellfish Safety, Virginia Department of Health, in order to fulfill its responsibilities of shellfish growing area supervision and classification. However, the data are made available to various agencies participating in shellfish program coordinated activities or other interested parties.

Copies of VPDES permits and inspections are available at the Department of Environmental Quality. A directory and interactive map are available via the internet at <https://www.deq.virginia.gov/permits-regulations/permits/water/surface-water-virginiapollutant-discharge-elimination-system>.

This report lists only those properties which have a sanitary deficiency or have other environmental significance. **"DIRECT"** indicates that the significant activity or deficiency has a direct impact on shellfish waters. Copies of the current condemnation notices and maps are available via the Internet at <https://www.vdh.virginia.gov/environmental-health/environmental-health-services/shellfish-safety/>.

## SECTION B: SEWAGE POLLUTION SOURCES

[illegible]

## SECTION C: NONSEWAGE WASTE SITES

[illegible]

## SECTION D: BOATING ACTIVITY

[illegible]

## Shoreline Survey # 031

## SECTION E: ANIMALS PRESENT

[illegible]

Growing Area # 031  
Locklies and Mill Creeks  
17 June 2024

## **SECTION B: SEWAGE POLLUTION SOURCES**

### **1. SEWAGE TREATMENT WORKS**

0 – DIRECT – None.

0 – INDIRECT – None.

0 – B.1. TOTAL

### **2. ON-SITE SEWAGE DEFICIENCIES** – Correction of deficiencies in this section is the responsibility of the local health department.

0 – CONTRIBUTES POLLUTION, DIRECT – None.

1 – CONTRIBUTES POLLUTION, INDIRECT – # A1

0 – CP (Kitchen or Laundry Wastes), DIRECT – None.

0 – CP (Kitchen or Laundry Wastes), INDIRECT – None.

0 – NO FACILITIES, DIRECT – None.

0 – NO FACILITIES, INDIRECT – None.

1 – B.2. TOTAL

### **3. POTENTIAL POLLUTION** – Periodic surveillance of these properties will be maintained to determine any status change.

0 – POTENTIAL POLLUTION – None.

## **SECTION C: NON-SEWAGE WASTE SITES**

### **1. INDUSTRIAL WASTE SITES**

0 – DIRECT – None.

0 – INDIRECT – None.

0 – C.1. TOTAL

### **2. SOLID WASTE SITES**

0 – DIRECT – None.

0 – INDIRECT – None.

0 – C.2. TOTAL

### **3. STORMWATER OUTFALLS**

0 – DIRECT – None

0 – INDIRECT – None

0 – E. TOTAL

## **SECTION D: BOATING ACTIVITY**

3 – MARINAS, INDIRECT – # 2, 4, 5

1 – UNDER SURVEILLANCE, INDIRECT – # 9

4 – D. TOTAL

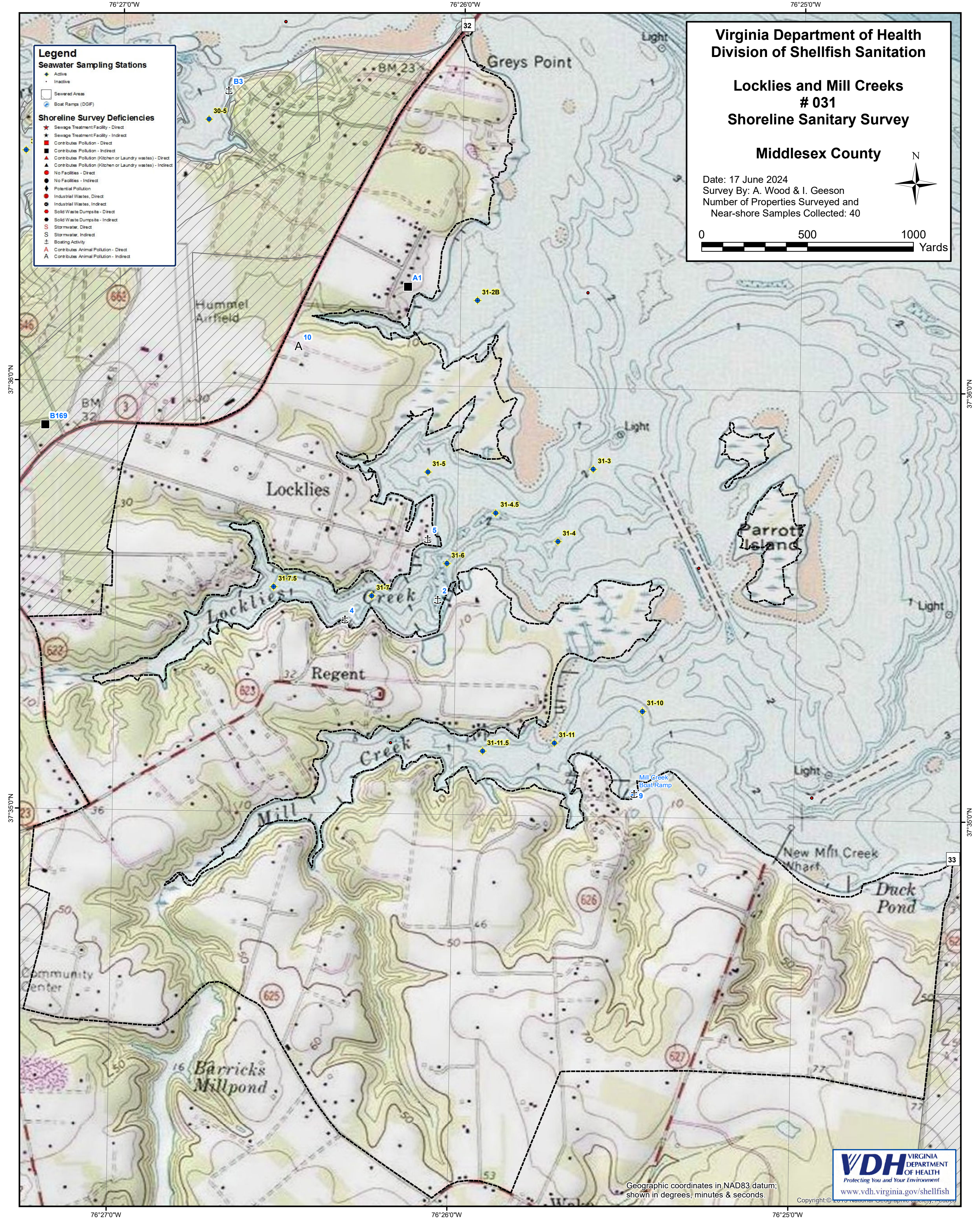
## **SECTION E: ANIMALS PRESENT**

0 – DIRECT – None.

1 – INDIRECT – # 10

1 – E. TOTAL





**Legend**

**Seawater Sampling Stations**

- Active
- Inactive

**Shoreline Survey Deficiencies**

- Sewage Treatment Facility - Direct
- Sewage Treatment Facility - Indirect
- Contributes Pollution - Direct
- Contributes Pollution - Indirect
- Contributes Pollution (Kitchen or Laundry wastes) - Direct
- Contributes Pollution (Kitchen or Laundry wastes) - Indirect
- No Facilities - Direct
- No Facilities - Indirect
- Potential Pollution
- Industrial Wastes, Direct
- Industrial Wastes, Indirect
- Solid Waste Dumpsite - Direct
- Solid Waste Dumpsite - Indirect
- Stormwater, Direct
- Stormwater, Indirect
- Boating Activity
- Contributes Animal Pollution - Direct
- Contributes Animal Pollution - Indirect

**Virginia Department of Health**  
**Division of Shellfish Sanitation**

**Locklies and Mill Creeks**  
**# 031**  
**Shoreline Sanitary Survey**

**Middlesex County**

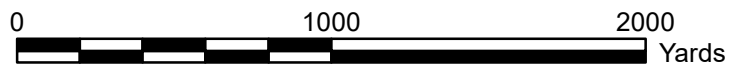
Date: 17 June 2024  
Survey By: A. Wood & I. Geeson  
Number of Properties Surveyed and  
Near-shore Samples Collected: 40

0 500 1000  
Yards



# Near Shore Enterococcus Sampling Growing Area # 031 - Locklies & Mill Creeks Middlesex County

\* Highest value was 41 at sta # A25W collected on 2/13/24.



## Legend

Enterococcus spp. (MPN/100ml)

Sampling Dates: 1/2/24 - 2/13/24

- < 10
- 10 - 100
- 101 - 1000
- 1001 - 10000
- > 10000

Seawater Sampling Stations Status:

- active

