



# COMMONWEALTH of VIRGINIA

Department of Health  
P O BOX 2448  
RICHMOND, VA 23218

TTY 7-1-1 OR  
1-800-828-1120

## MOBJACK BAY: NORTH RIVER Growing Area # 042 Gloucester and Mathews Counties Shoreline Sanitary Survey

**Date:** 2 December 2024

**Survey Period:** August 28, 2024 – November 12, 2024

**Total Number of samples analyzed, and properties evaluated:** 106

**Surveyed By:** J. Friedman J. Carrier, J. Fleiger, N. Schultz, & M. Farnham

### SECTION A: GENERAL

This survey area extends from Reference Point 42 beginning at Minter Point to Reference Point 43 at Ware Neck Point, including the shoreline of the North River, Godsey Creek, Diggs Creek, Cakes Creek, Smith Lot Creek, Sibley Creek, Raymond Creek, Blackwater Creek (Oakland Creek, Greenmansion Cove and Hampton Creek), North End Branch, Burke Mill Stream, Toddsbury Creek, Elmington Creek, Back Creek, Belleville Creek, Davis Creek, Silver Creek and all of their tributaries. The topography of the area begins at the shoreline to a maximum of 20 feet at the outer edge of the survey boundary.

Meteorological data indicated that 8.5" of rain fell during the survey period. A monthly breakdown follows:

Date range	Cumulative Rainfall (inches)	Avg. Monthly rainfall (2013-2023)
August 28-31, 2024	0.05"	NA (partial month)
September 2024	6.71"	4.68"
October 2024	0.33"	3.83"
November 1-14, 2024	1.41"	NA (partial month)

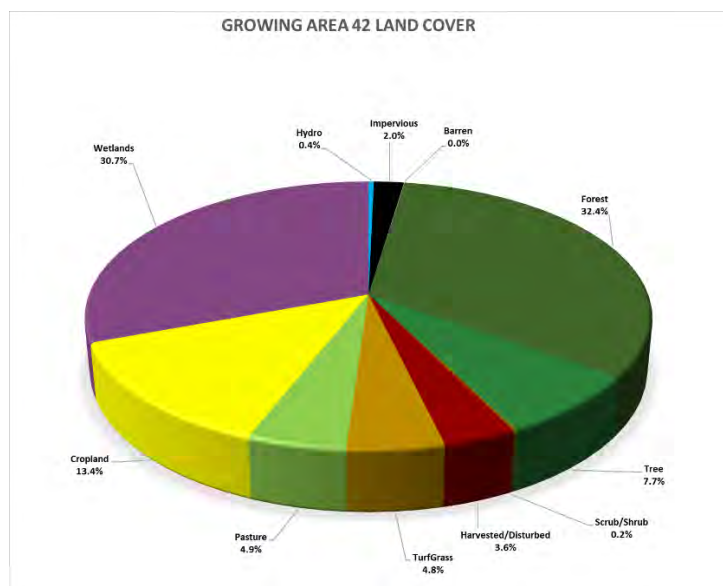
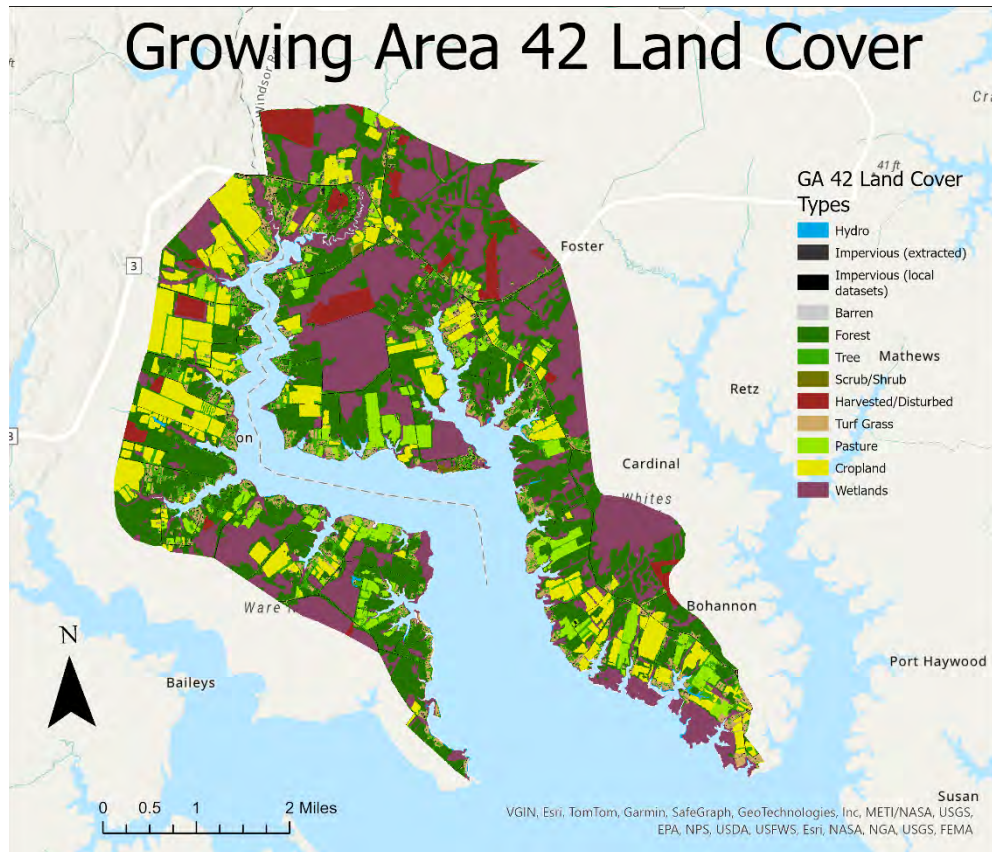
Growing Area # 42 Nearshore Sampling					Rainfall in inches		
Sample dates	High Tide*	Ebb Current**	Sampling time	Enterococcus range (MPN/100ml)	Day of	Previous 24 hours	Previous 7 days
10/9/24	13:57	04:29	9:58 – 12:47	9 - 62	0"	0"	0.01"
10/10/24	14:52	05:20	10:00 – 11:52	9 - 109	0"	0"	0"
10/15/24	07:37	11:53	9:39 – 12:40	9 - 52	0"	0"	0"
11/7/24	12:36	05:29	9:55 – 11:47	9 - 40	0"	0"	0"
Total rainfall for nearshore sampling period (10/9-11/7/2024) 0.0"							

\* High tide estimated from NOAA ID (8637072) Belleville.

\*\* Slack ebb estimated from NOAA ID (ACT5516) New Point Comfort, 2.0 n.mi. WSW of

The 2020 census reported that there are an estimated 1451 residents across 802 housing units in Growing Area 42. The population density is an estimated 68 people per square mile. <https://www.census.gov/geographies/reference-maps/2020/geo/2020-census-block-maps.html>

Within Growing Area 42 there are 2571 land parcels. Land Cover data are shown below.



Source: [https://gismaps.vdem.virginia.gov/Download/Land\\_Cover/County\\_Report.pdf](https://gismaps.vdem.virginia.gov/Download/Land_Cover/County_Report.pdf)

For this survey, nearshore seawater stations were established to survey the full extent of navigable waters beyond routine classification stations. Stations were created in closer proximity to the shoreline and farther upstream than routine stations and are intended to evaluate drainage entry points of potential point and nonpoint source pollution. Data from these stations were analyzed to compare fecal indicator bacteria (FIB) concentrations within the waterway and identify potential onshore contamination sources. The table on page one shows hydrographic data, sampling times, and the range of enterococcus concentrations measured. Maps of the enterococcus sampling locations are provided at the end of this report.

Information in this report is gathered by and primarily for use by the Division of Shellfish Safety, Virginia Department of Health, in order to fulfill its responsibilities of shellfish growing area supervision and classification. However, the data are made available to various agencies participating in shellfish program coordinated activities or other interested parties.

Copies of VPDES permits and inspections are available at the Department of Environmental Quality. A directory and interactive map are available via the internet at <https://www.deq.virginia.gov/permits/water/surface-waters-vpdes> and <https://geohub-vadeq.hub.arcgis.com/pages/Water%20Datasets>

Copies of Bacteriological, Hydrographic and Shellfish Closure data are available at the area office for review. Copies of the current condemnation notices and maps are available via the Internet at <https://www.vdh.virginia.gov/environmental-health/environmental-health-services/shellfish-safety/>

This report lists only those properties which have a sanitary deficiency or have other environmental significance. ***“DIRECT”*** indicates that the significant activity or deficiency has a direct impact on shellfish waters.

## SECTION B: SEWAGE POLLUTION SOURCES

[illegible]

## SECTION C: NONSEWAGE WASTE SITES

[illegible]

## SECTION D: BOATING ACTIVITY

[illegible]

# Shoreline Survey # 042

## SECTION E: ANIMALS PRESENT SITES

[illegible]

## SUMMARY

Growing Area # 042  
Mobjack Bay: North River  
2 December 2024

### SECTION B: SEWAGE POLLUTION SOURCES

#### 1. SEWAGE TREATMENT WORKS

0 – DIRECT – None.  
0 – INDIRECT – None.  
0 – B.1. TOTAL – None.

#### 2. ON-SITE SEWAGE DEFICIENCIES – Correction of deficiencies in this section is the responsibility of the local health department.

0 – CONTRIBUTES POLLUTION, DIRECT – None.  
0 – CONTRIBUTES POLLUTION, INDIRECT – None.  
0 – CP (Kitchen or Laundry Wastes), DIRECT – None.  
0 – CP (Kitchen or Laundry Wastes), INDIRECT – None.  
0 – NO FACILITIES, DIRECT – None.  
0 – NO FACILITIES, INDIRECT – None.  
0 – B.2.TOTAL

#### 3. POTENTIAL POLLUTION – Periodic surveillance of these properties will be maintained to determine any status change.

0 – POTENTIAL POLLUTION – None.

### SECTION C: NON-SEWAGE WASTE SITES

#### 1. INDUSTRIAL WASTE SITES

0 – DIRECT – None  
0 – INDIRECT – None.  
0 – C.1. TOTAL – None

#### 2. SOLID WASTE SITES

0 – DIRECT – None.  
0 – INDIRECT – None.  
0 – C.2. TOTAL

#### 3. STORMWATER OUTFALLS

0 – DIRECT – None.  
0 – INDIRECT – None.  
0 – E. TOTAL

### SECTION D: BOATING ACTIVITY, Indirect

2 – MARINAS – # 157, 266  
3 – UNDER SURVEILLANCE – # 156, 214, 365  
5 – D. TOTAL

### SECTION E: ANIMALS PRESENT

0 – DIRECT – None.  
8 – INDIRECT – # 48, 109, 125, 145, 322, 761, 800, J301  
8 – E. TOTAL

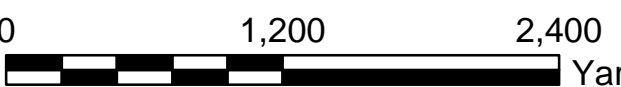


Virginia Department of Health  
Division of Shellfish Sanitation

Mobjack Bay: North River  
Growing Area # 042  
Shoreline Sanitary Survey

Gloucester and Mathews Counties

Date: 2 December 2024  
Survey By: J. Friedman J. Carrier,  
J. Fleiger, N. Schultz, & M. Farnham  
Number of Properties Surveyed: 106



Legend

Seawater Sampling Stations

- Active
- Inactive
- Sewered Areas
- Boat Ramps (DGF)

Shoreline Survey Deficiencies

- Sewage Treatment Facility - Direct
- Sewage Treatment Facility - Indirect
- Contributes Pollution - Direct
- Contributes Pollution - Indirect
- Contributes Pollution (Kitchen or Laundry wastes) - Direct
- Contributes Pollution (Kitchen or Laundry wastes) - Indirect
- No Facilities - Direct
- No Facilities - Indirect
- Potential Pollution
- Industrial Wastes, Direct
- Industrial Wastes, Indirect
- Solid Waste Dumpsite - Direct
- Solid Waste Dumpsite - Indirect
- Stormwater, Direct
- Stormwater, Indirect
- Boating Activity
- Contributes Animal Pollution - Direct
- Contributes Animal Pollution - Indirect



# Near Shore Enterococcus Sampling Growing Area # 042 - Mobjack Bay: North River Gloucester and Mathews Counties

\* Highest value was 109 collected at station # J32 on 10/10/24.

0 2000 4000  
Yards

# 042  
Mobjack Bay: North River

# 041  
Mobjack Bay: East River

# 044  
Mobjack Bay: Severn River

# 040  
Mobjack Bay: New Point Comfort to East River

## Legend

Enterococcus spp. (MPN/100ml)

Sampling Dates: 10/9/24 - 11/7/24

- < 10
- 10 - 100
- 101 - 1000
- 1001 - 10000
- > 10000

GrowingAreasNew