



COMMONWEALTH of VIRGINIA
DEPARTMENT OF HEALTH
DIVISION OF SHELLFISH SANITATION

Marissa J. Levine, MD, MPH, FAAFP
State Health Commissioner

109 Governor Street, 6th Floor
P.O. Box 2448
Richmond, Virginia 23218

Ph: 804-864-7487
Fax: 804-864-7481

YORK RIVER: CAMP PEARY TO YORKTOWN
Growing Area # 051
York County
Shoreline Sanitary Survey

Date: 27 February 2017

Survey Period: December 2, 2016 – January 20, 2017

Total Number of Properties Surveyed: 148

Surveyed By: I.M. Geeson

SECTION A: GENERAL

This survey area extends from Reference Point 51 at the end of the road about 250 yards north of Beaverdam Pond in Camp Peary to Reference Point 52 off Route 238 just west of the mouth of Yorktown Creek at the Colonial Fortress (Fusilier's Redoubt) and triangulation marker "Pitz." The area drains to the tidal portions of Queens' Creek (Haring Swamp) King's Creek (Whiteman Swamp), Felgates Creek (Black Swamp), Indian Field Creek, Ballard Creek and the York River.

The topography of the area is characterized by elevations ranging from 10' or less along the shoreline to a maximum of 90' near the southern edge of the survey boundary. Population is concentrated in the City of Williamsburg and in numerous subdivisions of York County. The economy is based primarily on military reservations, tourism, and general commerce. A relatively large amount of marsh and forest remains intact along military shorelines.

Meteorological data indicated a total of 4.92" of rain fell during the survey period. A monthly breakdown of rainfall is as follows: December 2.23" January 1-20 2.69"

Three onsite systems that fall within Camp Peary were evaluated along with the 2016 Growing Area 50 shoreline survey on April 15, 2016.

York County requires residents to have their septic systems checked on a routine basis and provide a record of the service. Sewered areas are served by the Hampton Roads Sanitation District (HRSD) with connection and garbage collection fees paid to York County. A GIS layer identifying connected properties was provided by the county. Homes on East Queens Lake Drive in the previous survey have now been connected and a sewer line along West Queens Lake Drive is currently under construction.

The U.S. Naval Weapons Station and the U.S. Naval Supply Center Cheatham Annex are both served by Hampton Roads Sanitation District. Stormwater GIS layers were provided by York County and the Navy; the layers and email correspondence can be reviewed in an appendix document located within DSS Central Office files.

Copies of bacteriological, hydrographical, and shellfish closure data are available at the area field office for review. Copies of the current condemnation notices and maps are available via the internet at <http://www.vdh.virginia.gov/oehs/shellfish/>.

This report lists only those properties that have a sanitary deficiency or have other environmental significance. “***DIRECT***” indicates that the significant activity or deficiency has a direct impact on shellfish waters. Data in the report are also made available to local health departments and other agencies to address items that may be out of compliance with their regulatory programs. Copies of VPDES Permits and inspections are available at the Department of Environmental Quality, Tidewater Regional Office (DEQ/TRO).

SECTION B: SEWAGE POLLUTION SOURCES

[illegible]

Shoreline Survey # 051

SECTION C: NONSEWAGE WASTE SITES

[illegible]

Shoreline Survey # 051

SECTION D: BOATING ACTIVITY

[illegible]

Shoreline Survey # 051

SECTION E: CONTRIBUTES ANIMAL POLLUTION

[illegible]

SUMMARY

Growing Area # 051
York River: Camp Peary to Yorktown
27 February 2017

SECTION B: SEWAGE POLLUTION SOURCES

1. SEWAGE TREATMENT FACILITIES

0 – DIRECT – None
0 – INDIRECT – None
0 – B.1. TOTAL

2. ON-SITE SEWAGE DEFICIENCIES – Correction of the deficiencies in this section is the responsibility of the local health department.

0 – CONTRIBUTES POLLUTION, DIRECT – None
2 – CONTRIBUTES POLLUTION, INDIRECT – # 32, # 48
0 – CP (Kitchen or Laundry Wastes), DIRECT – None
1 – CP (Kitchen or Laundry Wastes), INDIRECT – # 41
0 – NO FACILITIES, DIRECT – None
0 – NO FACILITIES, INDIRECT – None
3 – B.2 TOTAL

3. POTENTIAL POLLUTION – Periodic surveillance of these properties will be maintained to determine any status change.

0 – POTENTIAL POLLUTION – None

SECTION C: NON-SEWAGE WASTE SITES

1. INDUSTRIAL WASTE SITES

2 – DIRECT – # 147, 148
0 – INDIRECT – None
0 – C.1. TOTAL

2. SOLID WASTE SITES

0 – DIRECT – None
0 – INDIRECT – None
0 – C.2. TOTAL

SECTION D: BOATING ACTIVITY

1 – MARINAS – #146
0 – OTHER PLACES WHERE BOATS ARE MOORED – None
0 – UNDER SURVEILLANCE – None
1 – D. TOTAL

SECTION E: CONTRIBUTES ANIMAL POLLUTION

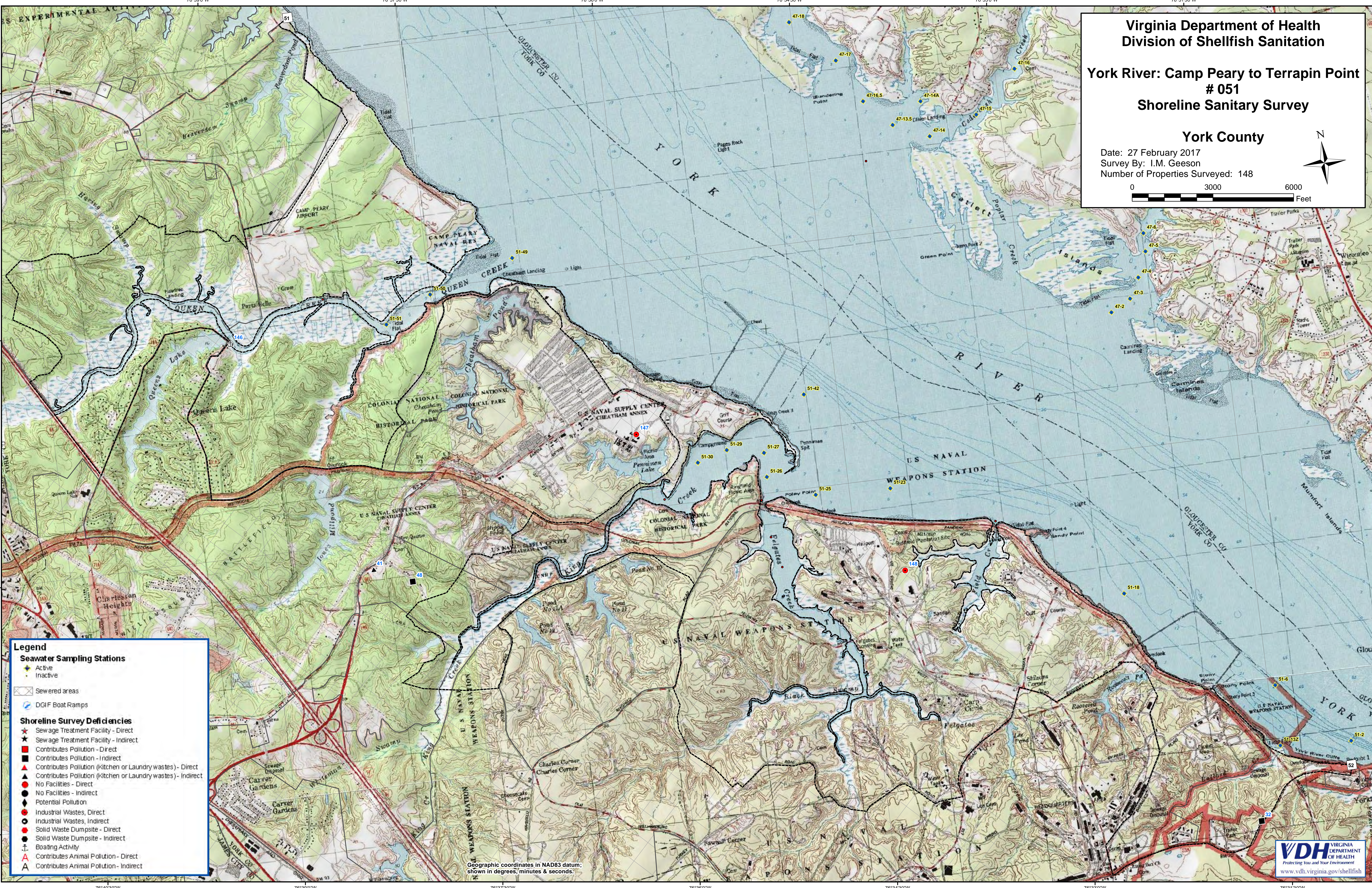
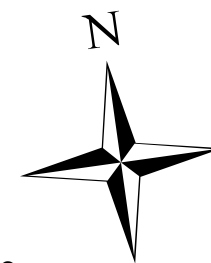
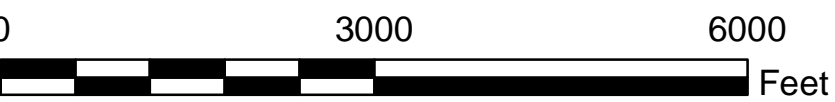
0 – DIRECT – None
0 – INDIRECT – None
0 – E. TOTAL

Virginia Department of Health
Division of Shellfish Sanitation

York River: Camp Peary to Terrapin Point
051
Shoreline Sanitary Survey

York County

Date: 27 February 2017
Survey By: I.M. Geeson
Number of Properties Surveyed: 148



Legend

Seawater Sampling Stations

- Active
- Inactive

Shoreline Survey Deficiencies

- Sewage Treatment Facility - Direct
- Sewage Treatment Facility - Indirect
- Contributes Pollution - Direct
- Contributes Pollution - Indirect
- Contributes Pollution (Kitchen or Laundry wastes) - Direct
- Contributes Pollution (Kitchen or Laundry wastes) - Indirect
- No Facilities - Direct
- No Facilities - Indirect
- Potential Pollution
- Industrial Wastes, Direct
- Industrial Wastes, Indirect
- Solid Waste Dumpsite - Direct
- Solid Waste Dumpsite - Indirect
- Boating Activity
- Contributes Animal Pollution - Direct
- Contributes Animal Pollution - Indirect

Geographic coordinates in NAD83 datum;
shown in degrees, minutes & seconds.