



## COMMONWEALTH of VIRGINIA

Department of Health  
P O BOX 2448  
RICHMOND, VA 23218

TTY 7-1-1 OR  
1-800-828-1120

### York River: Yorktown to Goodwin Islands Growing Area # 052 York County Shoreline Sanitary Survey

**Date:** 21 March 2024

**Survey Period:** August 14, 2023 – November 3, 2023

**Total Number of Properties Surveyed and Near-shore Samples Collected:** 39

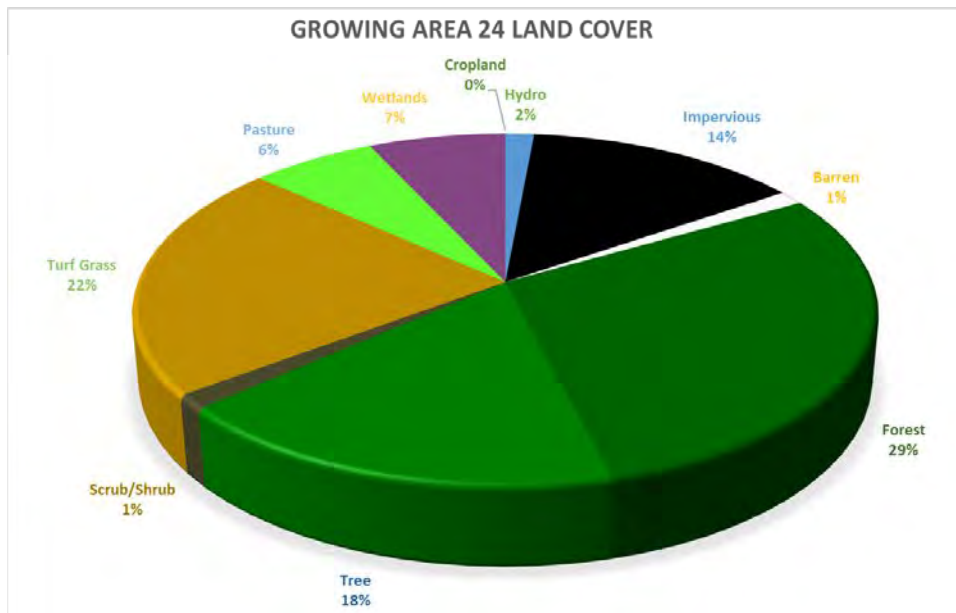
**Surveyed By:** F. Monis, C. Turner, L. Sakach, & E. Yeargan

#### SECTION A: GENERAL

This survey area extends from Reference Point 52 at Fusilier Redoubt (Colonial Fortifications Geological Survey triangulation point “Pitz”) west of the Coleman Bridge to Reference Point 53 at the northwest mouth of the Thorofare (triangulation point “Sandbox”), including the York River shoreline between these two points, Yorktown Creek, Wormley Creek, Wormley Pond, and all their tributaries.

The survey area falls within York County. The population has increased by an estimated 9% since the 2010 census. The estimated 2022 population is around 71,300 residents. Data from 2022 indicate there are 28,582 housing units, with 211 building permits issued that year. <https://www.census.gov/quickfacts/fact/table/US/PST045221>

Within Growing Area 52 there are 2300 land parcels. Land Cover data are shown below.





Source: [https://gismaps.vdem.virginia.gov/Download/Land\\_Cover/County\\_Report.pdf](https://gismaps.vdem.virginia.gov/Download/Land_Cover/County_Report.pdf)

The topography of the area varies in elevation from up to 50' near the shoreline in the western and central areas of the survey to elevations between 5' and 10' on the eastern side of the survey area. The majority of the survey area is currently on sewer. The sewer areas are connected to the Hampton Roads Sanitation District York River Treatment Plant. The WWTP itself is located outside the present survey boundaries in Shellfish Growing Area 53 Back Creek. However, the plant discharges into a Prohibited portion of the York River.

Meteorological data indicated that 9.07" of rain fell during the survey period. A monthly breakdown follows:

Date Range	Cumulative Rainfall	Average Monthly rainfall 2012-2022
Aug. 14 – 31, 2023	1.99"	N/A Partial Month
September 2023	5.76"	3.93"
October 2023	1.32"	4.54"
Nov. 1 – 3, 2023	0"	N/A Partial Month

For this survey, nearshore seawater stations were established to survey the full extent of navigable waters beyond routine classification stations. Stations were created in closer proximity to the shoreline and farther upstream than routine stations and are intended to evaluate drainage entry points of potential point and nonpoint source pollution. Station data were analyzed to compare relative concentrations of fecal indicator bacteria within the waterway to identify potential onshore sources of contamination.

Hydrographic data, sampling times and range of enterococcus concentrations measured are shown in the table below. Maps of the enterococcus sampling are shown at the conclusion of this report.

Growing Area # 52 Nearshore Sampling, Rainfall in inches							
Sample dates	High Tide*	Ebb Current **	Sampling time	Enterococcus range (MPN/100ml)	Day of	Previous 24 hours	Previous 7 days
10/11/23	7:59	9:24	10:22 –12:12	<10-31	0	0.01	0.07
11/03/23	1:49	6:50	7:53 - 9:26	<10-169	0	0	0.09
Total rainfall for nearshore sampling period :1.25"							

\*High Tide estimated from Yorktown, Goodwin Neck NOAA ID# 2201.

\*\*Slack Ebb Current estimated from Yorktown NOAA ID# 5356.

Information in this report is gathered by and primarily for use by the Division of Shellfish Safety, Virginia Department of Health, in order to fulfill its responsibilities of shellfish growing area supervision and classification. However, the data are made available to various agencies participating in shellfish program coordinated activities or other interested parties.

Copies of VPDES permits and inspections are available at the Department of Environmental Quality. A directory and interactive map are available via the internet at <https://www.deq.virginia.gov/permits/water/surface-waters-vpdes> and <https://geohub-vadeq.hub.arcgis.com/pages/Water%20Datasets>

This report lists only those properties which have a sanitary deficiency or have other environmental significance. **“DIRECT”** indicates that the significant activity or deficiency has a direct impact on shellfish waters.

Copies of the current condemnation notices and maps are available via the Internet at <https://www.vdh.virginia.gov/environmental-health/environmental-health-services/shellfish-safety/>.

## SECTION B: SEWAGE POLLUTION SOURCES

[illegible]

## SECTION C: NONSEWAGE WASTE SITES

[illegible]

## SECTION D: BOATING ACTIVITY

[illegible]

## SECTION E: ANIMALS PRESENT

[illegible]

## SUMMARY

Growing Area # 052  
York River: Yorktown to Goodwin Island  
21 March 2024

### SECTION B: SEWAGE POLLUTION SOURCES

#### 1. SEWAGE TREATMENT FACILITIES

1 – DIRECT – # G1  
0 – INDIRECT – None  
1 – B.1. TOTAL

#### 2. ON-SITE SEWAGE DEFICIENCIES – Correction of deficiencies in this section is the responsibility of the local health department.

0 – CONTRIBUTES POLLUTION, DIRECT – None  
0 – CONTRIBUTES POLLUTION, INDIRECT – None  
0 – CP (Kitchen or Laundry Wastes), DIRECT – None  
0 – CP (Kitchen or Laundry Wastes), INDIRECT – None  
0 – NO FACILITIES, DIRECT – None  
0 – NO FACILITIES, INDIRECT – None  
0 – B.2. TOTAL

#### 3. POTENTIAL POLLUTION – Periodic surveillance of these properties will be maintained to determine any status change.

0 – POTENTIAL POLLUTION – None.

### SECTION C: NON-SEWAGE WASTE SITES

#### 1. INDUSTRIAL WASTE SITES

1 – DIRECT – # F2  
1 – INDIRECT – # F3  
2 – C.1. TOTAL

#### 2. SOLID WASTE SITES

0 – DIRECT – None  
0 – INDIRECT – None  
0 – C.2. TOTAL

#### 3. STORMWATER OUTFALLS

0 – DIRECT – None  
0 – INDIRECT – None  
0 – E. TOTAL

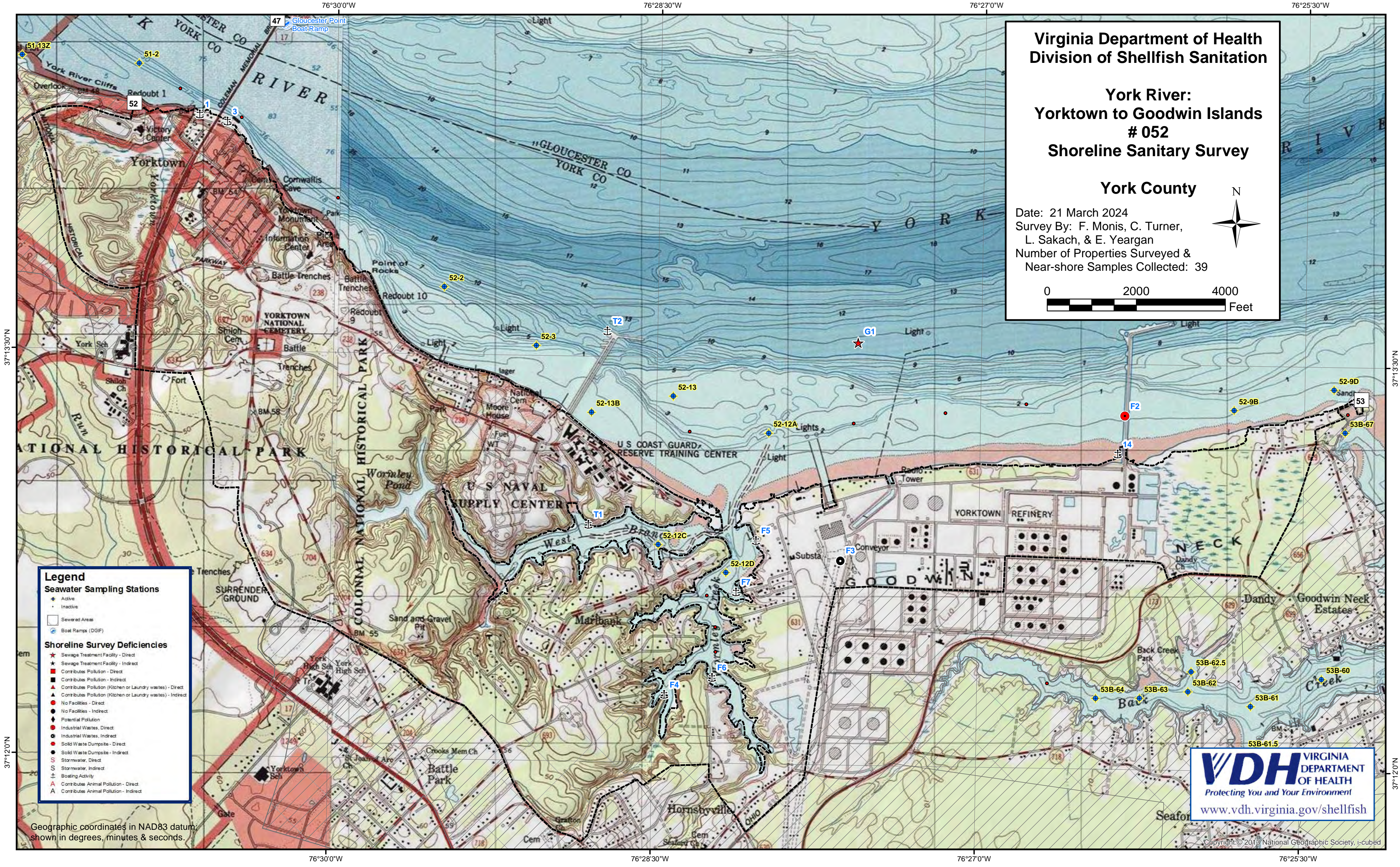
### SECTION D: BOATING ACTIVITY

4 – MARINAS – # 3, F4, F5, T1  
5 – UNDER SURVEILLANCE- # 1, 14, F6, F7, T2  
9 – D. TOTAL

### SECTION E: ANIMALS PRESENT

0 – DIRECT – None  
0 – INDIRECT – None  
0 – E. TOTAL





**Virginia Department of Health**  
**Division of Shellfish Sanitation**

**York River:**  
**Yorktown to Goodwin Islands**  
**# 052**  
**Shoreline Sanitary Survey**

**York County**

Date: 21 March 2024  
Survey By: F. Monis, C. Turner,  
L. Sakach, & E. Yeagan  
Number of Properties Surveyed &  
Near-shore Samples Collected: 39

0 2000 4000 Feet

**Legend**

**Seawater Sampling Stations**

- Active
- Inactive
- Sewered Areas
- Boat Ramps (DGIF)

**Shoreline Survey Deficiencies**

- Sewage Treatment Facility - Direct
- Sewage Treatment Facility - Indirect
- Contributes Pollution - Direct
- Contributes Pollution - Indirect
- Contributes Pollution (Kitchen or Laundry wastes) - Direct
- Contributes Pollution (Kitchen or Laundry wastes) - Indirect
- No Facilities - Direct
- No Facilities - Indirect
- Potential Pollution
- Industrial Wastes, Direct
- Industrial Wastes, Indirect
- Solid Waste Dumpsite - Direct
- Solid Waste Dumpsite - Indirect
- Stormwater, Direct
- Stormwater, Indirect
- Boating Activity
- Contributes Animal Pollution - Direct
- Contributes Animal Pollution - Indirect

**VDH** VIRGINIA  
DEPARTMENT  
OF HEALTH  
*Protecting You and Your Environment*  
[www.vdh.virginia.gov/shellfish](http://www.vdh.virginia.gov/shellfish)

Geographic coordinates in NAD83 datum,  
shown in degrees, minutes & seconds.

Copyright © 2013 National Geographic Society, i-cubed



# Near Shore Enterococcus Sampling Growing Area # 052 - York River Yorktown to Goodwin Islands York County

\* Highest value was 169 at station # M1  
collected on 11/3/23.

0 1000 2000  
Yards

## Legend

Enterococcus spp. (MPN/100ml)

Sampling Dates: 10/13/23 - 11/3/23

- < 10
- 10 - 100
- 101 - 1000
- 1001 - 10000
- > 10000