



COMMONWEALTH of VIRGINIA
DEPARTMENT OF HEALTH
DIVISION OF SHELLFISH SANITATION

Marissa J. Levine, MD, MPH, FAAFP
State Health Commissioner

109 Governor Street, 6th Floor
P.O. Box 2448
Richmond, Virginia 23218

Ph: 804-864-7487
Fax: 804-864-7481

BACK RIVER
Growing Area # 054
Cities of Hampton and Poquoson
Shoreline Sanitary Survey

Date: 21 December 2016
Survey Period: June 13 – December 9, 2016
Total Number of Properties Surveyed: 235
Surveyed By: F.P. Monis

SECTION A: GENERAL

This survey area extends from Reference Point 54 at the northwest mouth of the Thorofare Creek to Reference Point 55 at the Northend Point, including the Back River shoreline between these two points. Also included are Flat Gut, Bells Oyster Gut, Front Cove (High Cesar Creek), Back Cove, Long Creek, Fore Landing Creek, Northwest Branch (Watts Creek, Topping Creek, Cedar Creek, Brick Kiln Creek, Tabbs Creek), Southwest Branch (Tide Mill Creek, Newmarket Creek, Hampton Lake, Lynnhaven Lake), Harris River, Wallace Creek, Grunland Creek, Long Creek (Hawkins Pond, Floods Hole) and all of their tributaries. The survey boundary has been revised. See map for current survey boundary.

The topography of the area varies in elevations from 5' or less along the shoreline to a maximum of 30' near the western edge of the survey boundary. The economy is based mainly on local commerce, various industries, the military and recreation. The population is densely populated within the sewered sections and moderately populated in the remainder of the survey area.

During this survey period, meteorological data indicated that 35.05" of precipitation was recorded. A monthly breakdown follows:

June 13-30	0.07"	August	3.10"	October	9.05"	December 1-9	1.68"
July	7.37"	September	9.20"	November	1.67"		

This report lists only those properties that have a sanitary deficiency or have other environmental significance. "**DIRECT**" indicates that the significant activity or deficiency has a direct impact on shellfish waters. Individual field forms with full information on properties listed in this report are on file in the Richmond Office of the Division of Shellfish Sanitation and are available for reference until superseded by a subsequent survey of the area. Data in the report is also made available to local health departments and other agencies to address items that may be out of compliance with their regulatory programs.

Copies of Bacteriological, Hydrographic and Shellfish Closure data are available at the area office for review. Copies of the current condemnation notices and maps are available via the Internet at www.vdh.virginia.gov/shellfish/.

SECTION B: SEWAGE POLLUTION SOURCES

[illegible]

Shoreline Survey # 054

SECTION C: NONSEWAGE WASTE SITES

[illegible]

SECTION D: BOATING ACTIVITY

[illegible]

SECTION E: CONTRIBUTES ANIMAL POLLUTION

[illegible]

SUMMARY

Growing Area # 054

York County and the Cities of Hampton, Newport News and Poquoson

21 December 2016

SECTION B: SEWAGE POLLUTION SOURCES

1. SEWAGE TREATMENT FACILITIES

1 – DIRECT – # 230

0 – INDIRECT – None.

1 – B.1. TOTAL

2. ON-SITE SEWAGE DEFICIENCIES – Correction of the deficiencies in this section is the responsibility of the local health department.

1 – CONTRIBUTES POLLUTION, DIRECT – # 105

0 – CONTRIBUTES POLLUTION, INDIRECT – None.

0 – CP (Kitchen or Laundry Wastes), Direct – None.

0 – CP (Kitchen or Laundry Wastes), Indirect – None.

0 – NO FACILITIES, DIRECT – None.

0 – NO FACILITIES, INDIRECT – None.

1 – B.2. TOTAL

3. POTENTIAL POLLUTION – Periodic surveillance of these properties will be maintained to determine any status change.

0 – POTENTIAL POLLUTION – None.

SECTION C: NON-SEWAGE WASTE SITES

1. INDUSTRIAL WASTE SITES

3 – DIRECT – # 38, 57, 60

0 – INDIRECT – None.

3 – C.1. TOTAL

2. SOLID WASTE DUMPSITES

0 – DIRECT – None.

1 – INDIRECT – # 61

1 – C.2. TOTAL

SECTION D: BOATING ACTIVITY

5 – MARINAS – # 56, 164, 226, 228, 231

4 – OTHER PLACES WHERE BOATS ARE MOORED – # 31, 32, 33, 36

4 – UNDER SURVEILLANCE – # 34, 39, 146, 227

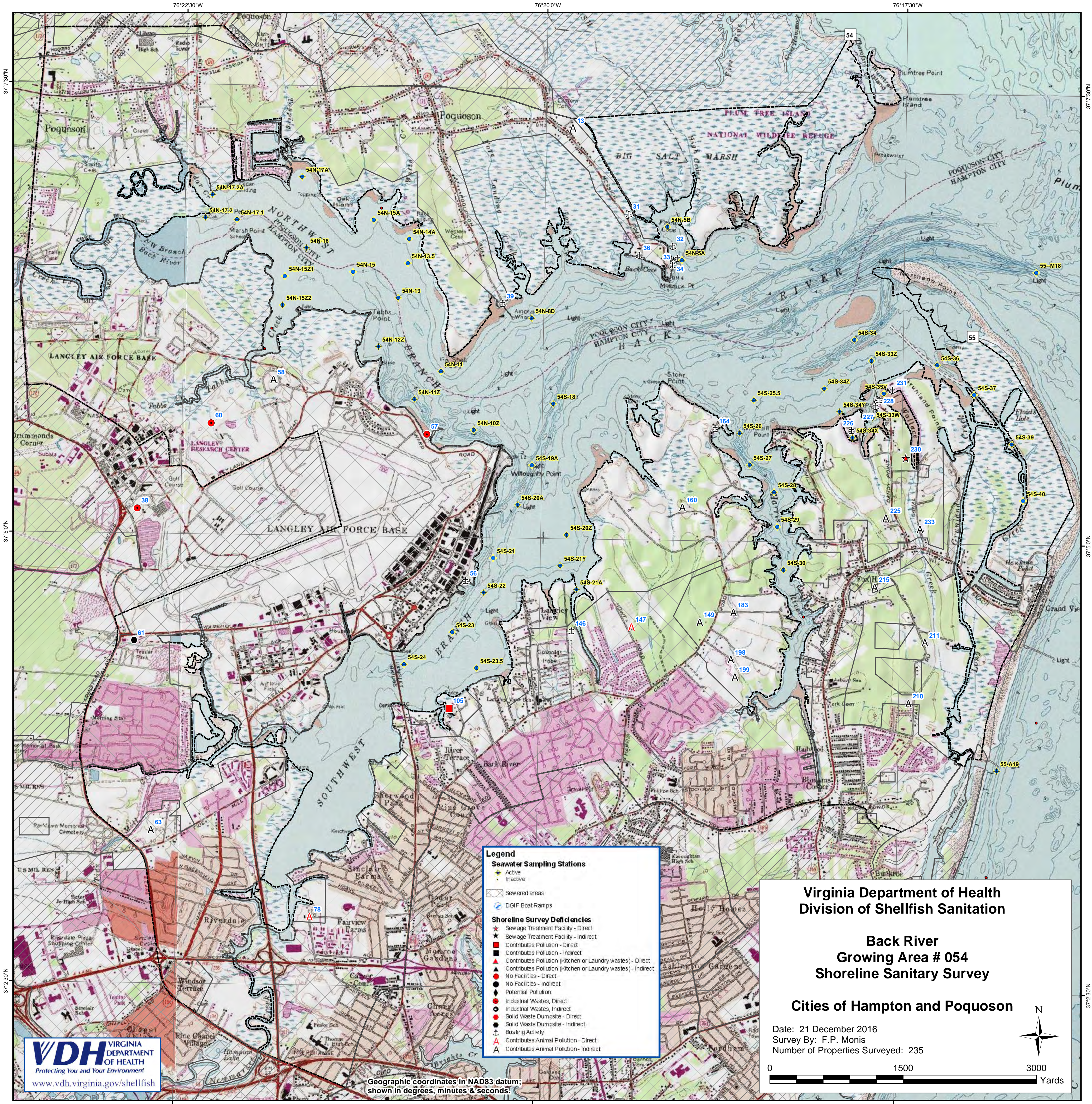
14 – D. TOTAL

SECTION E: CONTRIBUTES ANIMAL POLLUTION

2 – DIRECT – # 78, 147

13 – INDIRECT – # 13, 58, 63, 149, 160, 183, 198, 199, 210, 211, 215, 225, 233

15 – E. TOTAL



Legend

Seawater Sampling Stations

- Active
- Inactive

Shoreline Survey Deficiencies

- Sewage Treatment Facility - Direct
- Sewage Treatment Facility - Indirect
- Contributes Pollution - Direct
- Contributes Pollution - Indirect
- Contributes Pollution (Kitchen or Laundry wastes) - Direct
- Contributes Pollution (Kitchen or Laundry wastes) - Indirect
- No Facilities - Direct
- No Facilities - Indirect
- Potential Pollution
- Industrial Wastes, Direct
- Industrial Wastes, Indirect
- Solid Waste Dumpsite - Direct
- Solid Waste Dumpsite - Indirect
- Boating Activity
- Contributes Animal Pollution - Direct
- Contributes Animal Pollution - Indirect

Other Symbols:

- Sewered areas
- DGIF Boat Ramps

Virginia Department of Health
Division of Shellfish Sanitation

Back River
Growing Area # 054
Shoreline Sanitary Survey

Cities of Hampton and Poquoson

Date: 21 December 2016
Survey By: F.P. Monis
Number of Properties Surveyed: 235

0 1500 3000 Yards

North Arrow