



COMMONWEALTH of VIRGINIA

Department of Health
P O BOX 2448
RICHMOND, VA 23218

TTY 7-1-1 OR
1-800-828-1120

CHESAPEAKE BAY: BACK RIVER TO OLD POINT COMFORT Growing Area # 055 City of Hampton Shoreline Sanitary Survey

Date: 18 July 2024

Survey period: December 1, 2023 – May 31, 2024

Total number of Sites Visited and Near Shore Samples Collected: 47

Surveyed by: E. Yeargan, T. Egerton, & J. Friedman

SECTION A: GENERAL

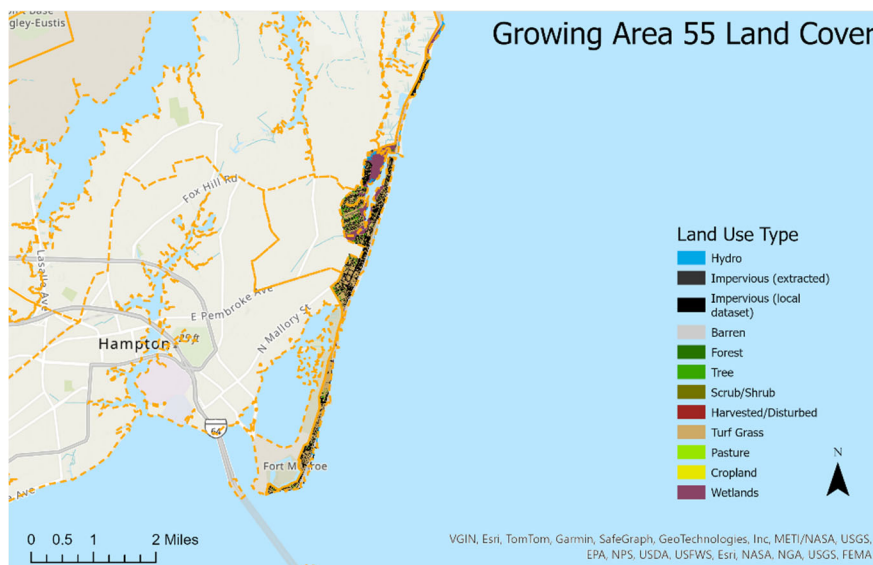
This survey area extends from Reference Point 55 at Northend Point to Reference Point 56 at the north end of Mcnair Drive, at the entrance to Fort Monroe, including the Chesapeake Bay shoreline and its tributaries between these two points.

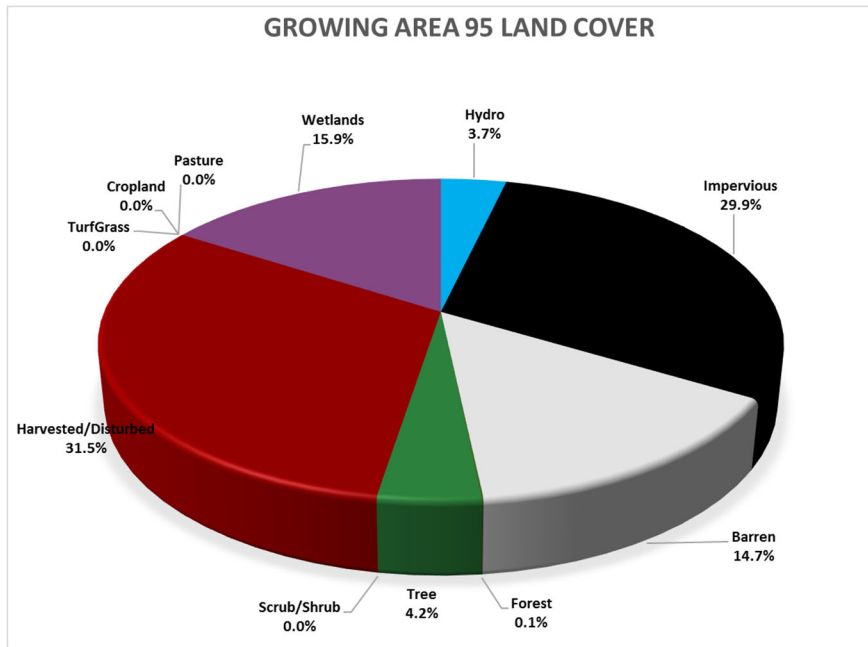
The topography of the survey area ranges to less than 5' along the shoreline to a maximum of 10-15' on the Fort Monroe complex.

The 2020 census reported that there are 4825 residents across 2548 housing units in Growing Area 55.

<https://www.census.gov/geographies/reference-maps/2020/geo/2020-census-block-maps.html>

Within Growing Area 55, there are 1604 land parcels. Land Cover data are shown below.





Source: https://gismaps.vdem.virginia.gov/Download/Land_Cover/County_Report.pdf

Meteorological data indicated that 28.06” of rain fell during the survey period. A monthly breakdown is as follows:

Date range	Cumulative Rainfall	Avg. Monthly rainfall (2013-2023)
December 2023	5.78”	3.96”
January 2024	3.87”	3.44”
February 2024	2.74”	3.48”
March 2024	9.46	4.09
April 2024	1.23	4.11
May 2024	4.98	5.44

For this survey, nearshore seawater stations were established to survey the navigable waters beyond routine classification stations. Stations were created in closer proximity to the shoreline and farther upstream than routine stations and are intended to evaluate drainage entry points of potential point and nonpoint source pollution. Station data were analyzed to compare relative concentrations of fecal indicator bacteria within the waterway to identify potential onshore sources of contamination.

Hydrographic data, sampling times and range of enterococcus concentrations measured are shown in the table below. Maps of the enterococcus sampling are shown at the conclusion of this report.

Growing Area # 55 Nearshore Sampling						
Sample dates	High Tide*	Sampling time	Enterococcus range (MPN/100ml)	Day of	Previous 24 hours	Previous 7 days
5/22/24	9:03 am	10:11 - 11:55	<10-41	0	0	2.03"
Total rainfall for nearshore sampling period: 9.74"						

This survey area includes the eastern portion of the Fort Monroe complex. The remainder of the complex, including the original fort structure, the entire Mill Creek watershed and Old Point Comfort Marina are included in the adjacent Growing Area # 056 (Hampton Roads: Old Point Comfort to Newport News Point).

The entire area is served by the Hampton Roads Sanitation District sewer system, with final treatment at the Boat Harbor Sewage Treatment Plant in Newport News (plant and discharge located in Growing Area # 057).

The Chesapeake Bay waterfront in this survey area includes both public and private recreational beaches. The marinas within Salt Ponds are active year-round due to their close proximity to popular recreational fishing grounds. The harbor also serves as a stop over point for transient vessels heading up and down the coast.

In addition to the Shoreline Survey, the Buckroe Beach, Long Creek and Salt Ponds Watersheds are a part of an enhanced pollution source assessment study. Stormwater and sewer conveyance pipes and outfall locations were reviewed in GIS layers made available by the City of Hampton and Hampton Roads Sanitation District. Stormwater outfalls and conveyance points were identified to visit onshore with water samples collected when water was present. These targeted sample collections were analyzed for molecular marker gene HF183, which is used to identify sources of recent human-source fecal pollution. The enhanced pollution assessment study is ongoing at the time of this report.

Information in this report is gathered by and primarily for use by the Division of Shellfish Safety, Virginia Department of Health, in order to fulfill its responsibilities of shellfish growing area supervision and classification. However, the data are made available to various agencies participating in shellfish program coordinated activities or other interested parties.

Copies of VPDES permits and inspections are available at the Department of Environmental Quality. A directory and interactive map are available via the internet at <https://www.deq.virginia.gov/permits/water/surface-waters-vpdes> and <https://geohub-vadeq.hub.arcgis.com/pages/Water%20Datasets>

Copies of Bacteriological, Hydrographic and Shellfish Closure data are available at the area office for review. Copies of the current condemnation notices and maps are available via the Internet at <https://www.vdh.virginia.gov/environmental-health/environmental-health-services/shellfish-safety/>

This report lists only those properties which have a sanitary deficiency or have other environmental significance. **“DIRECT”** indicates that the significant activity or deficiency has a direct impact on shellfish waters.

Shoreline Survey # 055 SECTION B: SEWAGE POLLUTION SOURCES

	GA #	Field #	Deficiency or Pollution Type	Latitude	Longitude	Pollutant Remarks	Septic System Type

Shoreline Survey # 055 SECTION B: SEWAGE POLLUTION SOURCES

Structure Type	Contact	Overall Site Remarks	Locality	DSS Staff	Date of Correction	Correction Notes

SUMMARY

Growing Area # 055
Chesapeake Bay: Back River to Old Point Comfort
18 July 2024

SECTION B: SEWAGE POLLUTION SOURCES

1. SEWAGE TREATMENT FACILITIES

0 – DIRECT – None.
0 – INDIRECT – None.
0 – TOTAL

2. ON-SITE SEWAGE DEFICIENCIES – Correction of deficiencies in this section is the responsibility of the local health department.

0 – CONTRIBUTES POLLUTION, DIRECT – None.
0 – CONTRIBUTES POLLUTION, INDIRECT – None.
0 – CP (Kitchen or Laundry Wastes), DIRECT – None.
0 – CP (Kitchen or Laundry Wastes), INDIRECT – None.
0 – NO FACILITIES, DIRECT – None.
0 – NO FACILITIES, INDIRECT – None.
0 – TOTAL

3. POTENTIAL POLLUTION – Periodic surveillance of these properties will be maintained to determine any status change.

0 – POTENTIAL POLLUTION – None.

SECTION C: NON-SEWAGE WASTE SITES

1. INDUSTRIAL WASTE SITES

0 – DIRECT – None.
0 – INDIRECT – None.
0 – TOTAL

2. SOLID WASTE DUMPSITES

0 – DIRECT – None.
0 – INDIRECT – None.
0 – TOTAL

3. STORMWATER OUTFALLS

0 – DIRECT – None.
0 – INDIRECT – None.
0 – E. TOTAL

SECTION D: BOATING ACTIVITY

2 – MARINAS, INDIRECT – # Y1, Y2
1 – UNDER SURVIELLENCE, INDIRECT – # G1
3 – TOTAL

SECTION E: ANIMALS PRESENT

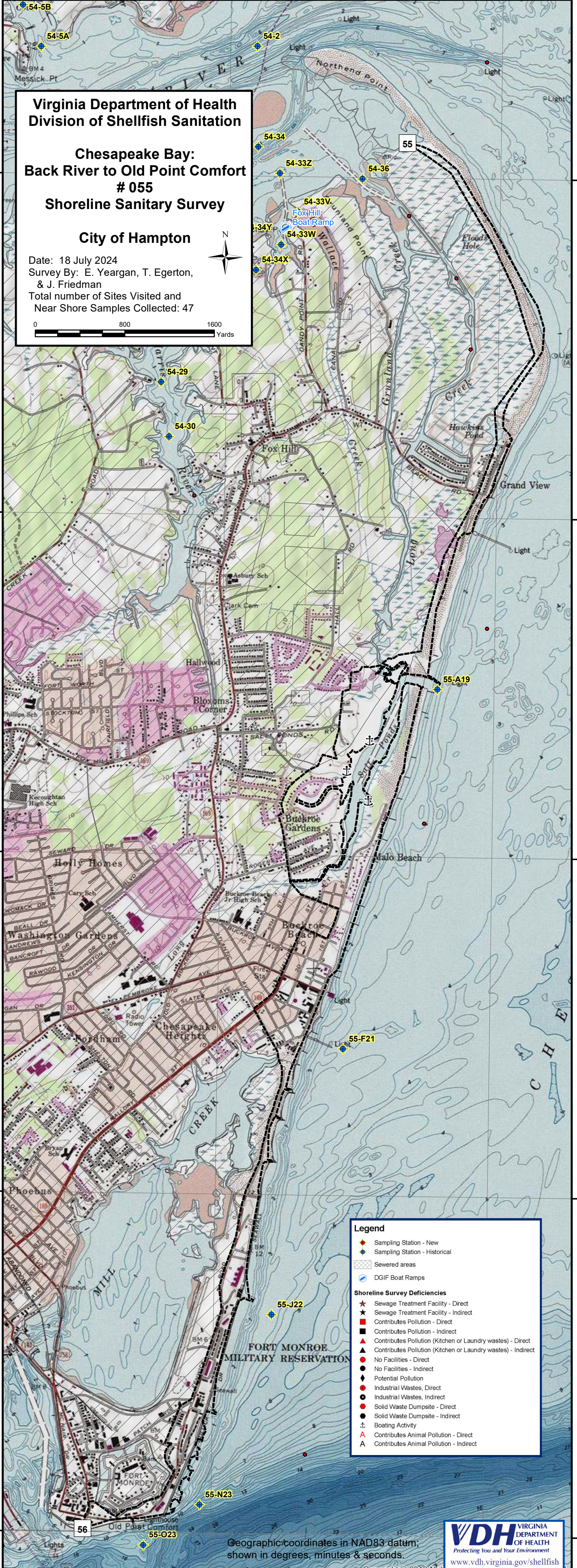
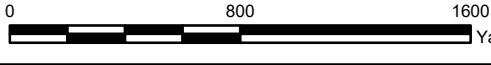
0 – DIRECT – None.
0 – INDIRECT – None.
0 – TOTAL

**Virginia Department of Health
Division of Shellfish Sanitation**

**Chesapeake Bay:
Back River to Old Point Comfort
055
Shoreline Sanitary Survey**

City of Hampton

Date: 18 July 2024
 Survey By: E. Yeagan, T. Egerton,
 & J. Friedman
 Total number of Sites Visited and
 Near Shore Samples Collected: 47



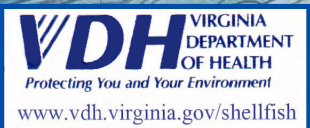
Legend

- ◆ Sampling Station - New
- ◆ Sampling Station - Historical
- ▨ Sewered areas
- ⚓ DGIF Boat Ramps

Shoreline Survey Deficiencies

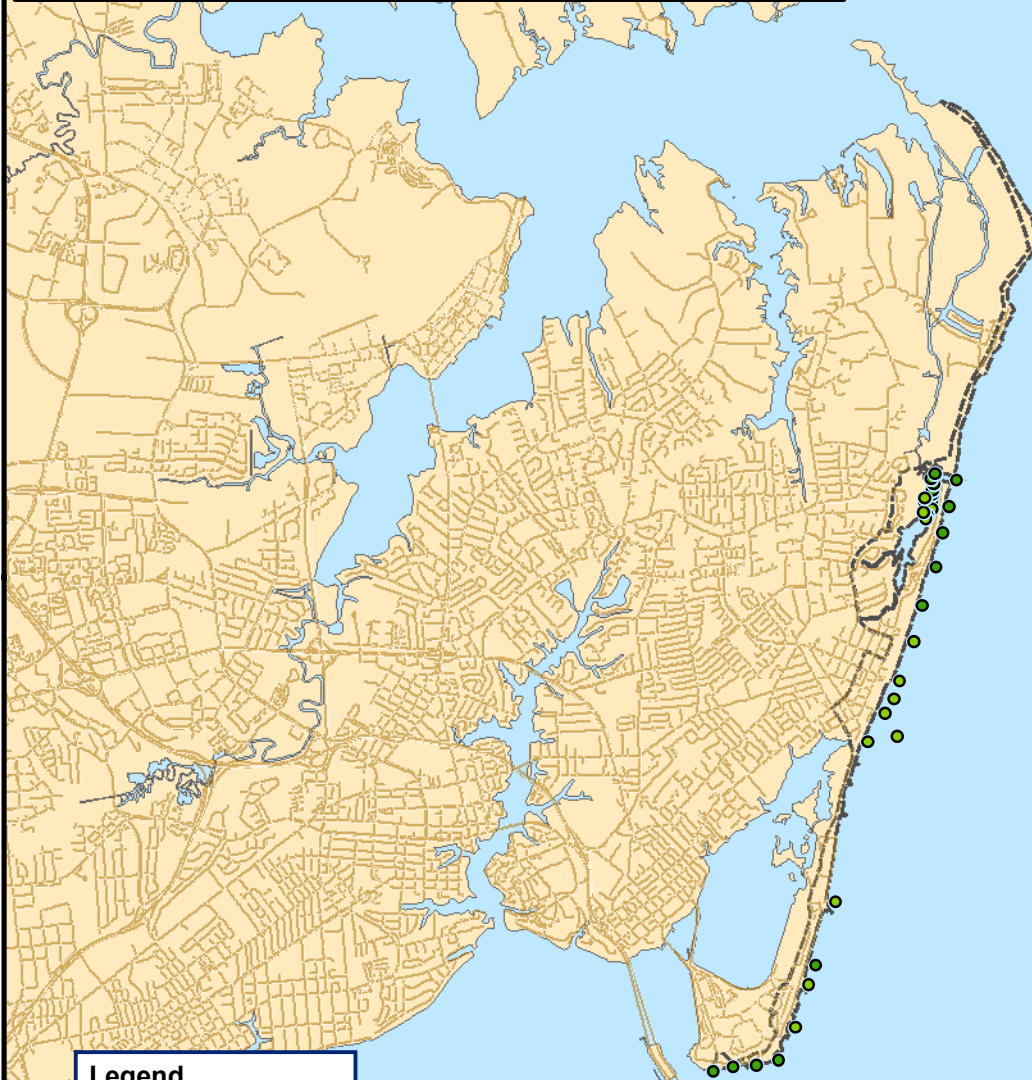
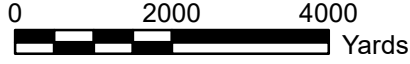
- ★ Sewage Treatment Facility - Direct
- ★ Sewage Treatment Facility - Indirect
- Contributes Pollution - Direct
- Contributes Pollution - Indirect
- ▲ Contributes Pollution (Kitchen or Laundry wastes) - Direct
- ▲ Contributes Pollution (Kitchen or Laundry wastes) - Indirect
- No Facilities - Direct
- No Facilities - Indirect
- ◆ Potential Pollution
- Industrial Wastes, Direct
- Industrial Wastes, Indirect
- Solid Waste Dumpsite - Direct
- Solid Waste Dumpsite - Indirect
- ⚓ Boating Activity
- ▲ Contributes Animal Pollution - Direct
- ▲ Contributes Animal Pollution - Indirect

Geographic coordinates in NAD83 datum;
 shown in degrees, minutes & seconds.



Near Shore Enterococcus Sampling Growing Area # 055 - Chesapeake Bay: Back River to Old Point Comfort City of Hampton

* Highest value was 41 collected at station # J46
on 5/22/24.



Legend

Entero055

Sampling Date: 5/22/24

- < 10
- 10 - 100
- 101 - 1000
- 1001 - 10000
- > 10000

