



COMMONWEALTH of VIRGINIA

Department of Health
P O BOX 2448
RICHMOND, VA 23218

TTY 7-1-1 OR
1-800-828-1120

Seaside: Fisherman's Island to Smith Island Growing Area # 093 Northampton County Shoreline Sanitary Survey

Date: 15 February 2025

Survey Period: October 28 – November 30, 2024

Total Number of Properties Surveyed + samples collected: 45

Surveyed By: T. Charnock & I. Geeson

SECTION A: GENERAL

This survey area extends from a line that extends from Plantation Drive east across The Thoroughfare to New Inlet, south to the third island of the Chesapeake Bay Bridge Tunnel (south island of Chesapeake Channel). See [2024 Growing Area boundaries](#) and https://webapps.mrc.virginia.gov/public/maps/chesapeakebay_map.php for the most up to date map.

The 2020 census reported that there are an estimated 542 residents across 291 housing units in Growing Area # 93.

<https://www.census.gov/geographies/reference-maps/2020/geo/2020-census-block-maps.html>

Meteorological data indicated that the area received a total rainfall of 2.24" for the survey period. A monthly breakdown is as follows:

Date range	Cumulative Rainfall	Avg. Monthly rainfall (2013-2023)
October 28 - 31, 2024	0"	NA Partial month
November 2024	2.24"	2.96"

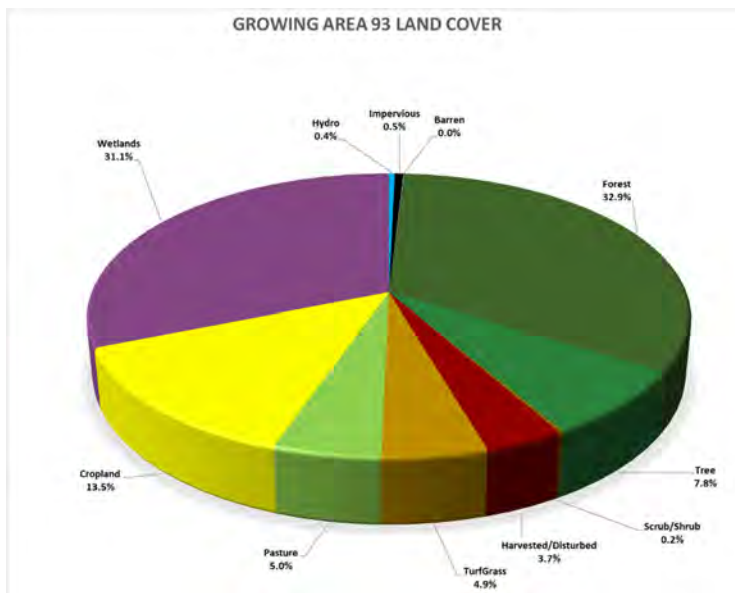
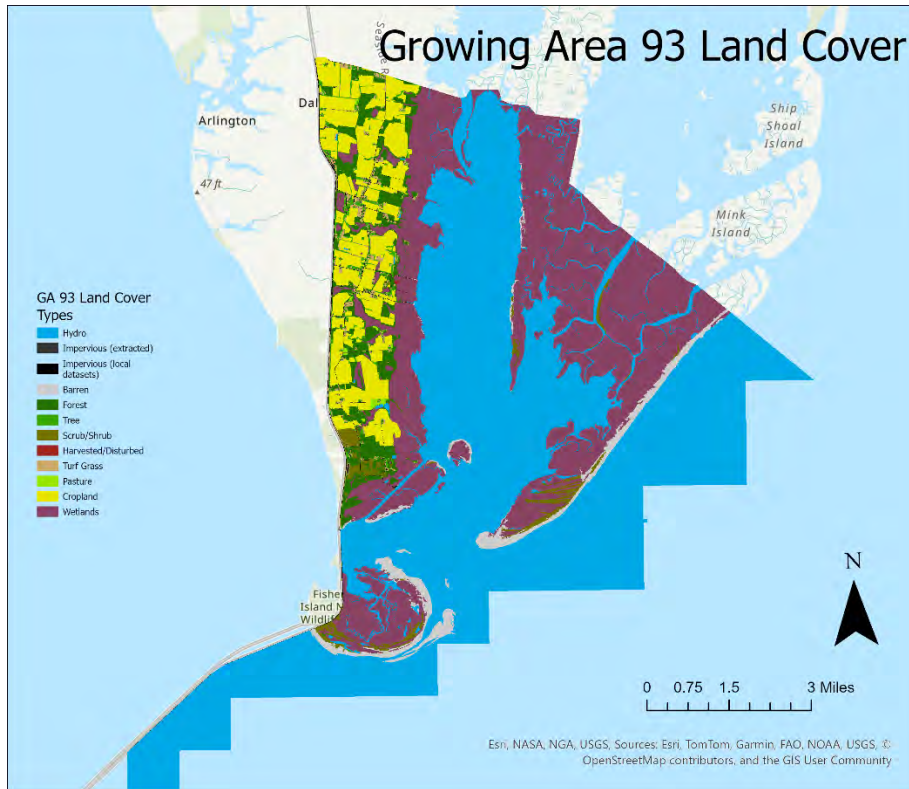
For this survey, nearshore seawater stations were established to survey the navigable waters beyond routine classification stations. Stations were created in closer proximity to the shoreline and farther upstream than routine stations and are intended to evaluate drainage entry points of potential point and nonpoint source pollution. Station data were analyzed to compare relative concentrations of fecal indicator bacteria within the waterway to identify potential onshore sources of contamination.

Hydrographic data, sampling times and range of enterococcus concentrations measured are shown in the table below. Maps of the enterococcus sampling are shown at the conclusion of this report.

Growing Area # 93 Nearshore Sampling					Rainfall in inches	
Sample dates	High Tide*	Sampling time	Enterococcus range (MPN/100ml)	Day of	Previous 24	Previous 7 days
10-29-24	06:58	7:53-10:24	9-41	0"	0"	0"
11-20-24	06:02	10:05-12:31	9-10	0.01"	0"	1.58"
Total Rainfall for Sampling period: (10/29-11/20/2024) 1.89"						

* High tide estimated from 8631874 Smith Island (Coast Guard Station).

Within GA 93 there are 723 land parcels. Land Cover data are shown below:



Information in this report is gathered by and primarily for use by the Division of Shellfish Safety, Virginia Department of Health, to fulfill its responsibilities of shellfish growing area supervision and classification. However, the data are made available to various agencies participating in shellfish program coordinated activities or other interested parties.

Copies of VPDES permits and inspections are available at the Department of Environmental Quality. A directory and interactive map are available via the internet at <https://www.deq.virginia.gov/permits-regulations/permits/water/surface-water-virginia-pollutant-discharge-elimination-system> and <https://geohub-vadeq.hub.arcgis.com/pages/Water%20Datasets>

Copies of Bacteriological, Hydrographic and Shellfish Closure data are available at the area office for review. Copies of the current condemnation notices and maps are available via the Internet at <https://www.vdh.virginia.gov/environmental-health/environmental-health-services/shellfish-safety/>

This report lists only those properties which have a sanitary deficiency or have other environmental significance. ***"DIRECT"*** indicates that the significant activity or deficiency has a direct impact on shellfish waters.

SECTION B: SEWAGE POLLUTION SOURCES

[illegible]

SECTION C: NONSEWAGE WASTE SITES

[illegible]

SECTION D: BOATING ACTIVITY

[illegible]

SECTION E: ANIMALS PRESENT SITES

[illegible]

SUMMARY

Growing Area # 093

Seaside: Fisherman's Island to Smith Island

Survey Date: 15 February 2025

SECTION B: SEWAGE POLLUTION SOURCES

1. SEWAGE TREATMENT FACILITIES

0 – DIRECT – None.

0 – INDIRECT – None.

0 – B.1. TOTAL

2. ONSITE SEWAGE DEFICIENCIES - Correction of deficiencies in this section is the responsibility of the local health department.

0 – CONTRIBUTES POLLUTION, DIRECT – None.

0 – CONTRIBUTES POLLUTION, INDIRECT – None.

0 – CP (Kitchen or Laundry Wastes), DIRECT – None.

0 – CP (Kitchen or Laundry Wastes), INDIRECT – None.

0 – NO FACILITIES, DIRECT – None.

0 – NO FACILITIES, INDIRECT – None.

0 – B.2. TOTAL

3. POTENTIAL POLLUTION - Periodic surveillance of these properties will be maintained to determine any status change.

0 – POTENTIAL POLLUTION – None.

SECTION C: NON-SEWAGE WASTE SITES

1. INDUSTRIAL WASTE SITES

0 – DIRECT – None.

0 – INDIRECT – None.

0 – C.1. TOTAL

2. SOLID WASTE DUMPSITES

0 – DIRECT – None

0 – INDIRECT – None.

0 – C.2. TOTAL

3. STORMWATER OUTFALLS

2 – DIRECT – # CB3, CB4

0 – INDIRECT – None.

2 – E. TOTAL

SECTION D: BOATING ACTIVITY, INDIRECT

0 – MARINAS – None.

2 – UNDER SURVEILLANCE – # L3, L4

2 – D. TOTAL

SECTION E: ANIMALS PRESENT

0 – DIRECT – None.

1 – INDIRECT – # L1

1 – E. TOTAL

Virginia Department of Health
Division of Shellfish Sanitation

Seaside:
Fishermans Island to Smith Island
093
Shoreline Sanitary Survey

Northampton County

Date: 15 February 2025
Survey By: T. Charnock & I. Geeson
Number of Properties Surveyed: 45



0 0.5 1 Miles

Legend

Seawater Sampling Stations (History)

- Active
- Inactive
- Sewered Areas
- Boat Ramps (DGIF)

Shoreline Survey Deficiencies

- Sewage Treatment Facility - Direct
- Sewage Treatment Facility - Indirect
- Contributes Pollution - Direct
- Contributes Pollution - Indirect
- Contributes Pollution (Kitchen or Laundry wastes) - Direct
- Contributes Pollution (Kitchen or Laundry wastes) - Indirect
- No Facilities - Direct
- No Facilities - Indirect
- Potential Pollution
- Industrial Wastes, Direct
- Industrial Wastes, Indirect
- Solid Waste Dumpsite - Direct
- Solid Waste Dumpsite - Indirect
- Stormwater, Direct
- Stormwater, Indirect
- Boating Activity
- Contributes Animal Pollution - Direct
- Contributes Animal Pollution - Indirect

Geographic coordinates in NAD83 datum;
shown in degrees, minutes & seconds.

**Near Shore Enterococcus
Sampling
Growing Area # 093
- Seaside:
Fishermans Island to
Smith Island
Northampton County**

* Highest value was 41 collected at
station # T10 on 10/29/24.

0 2000 4000
Yards



Legend

Enterococcus spp. (MPN/100ml)
Sampling Dates: 10/29/24 - 11/30/24

- < 10
- 10 - 100
- 101 - 1000
- 1001 - 10000
- > 10000