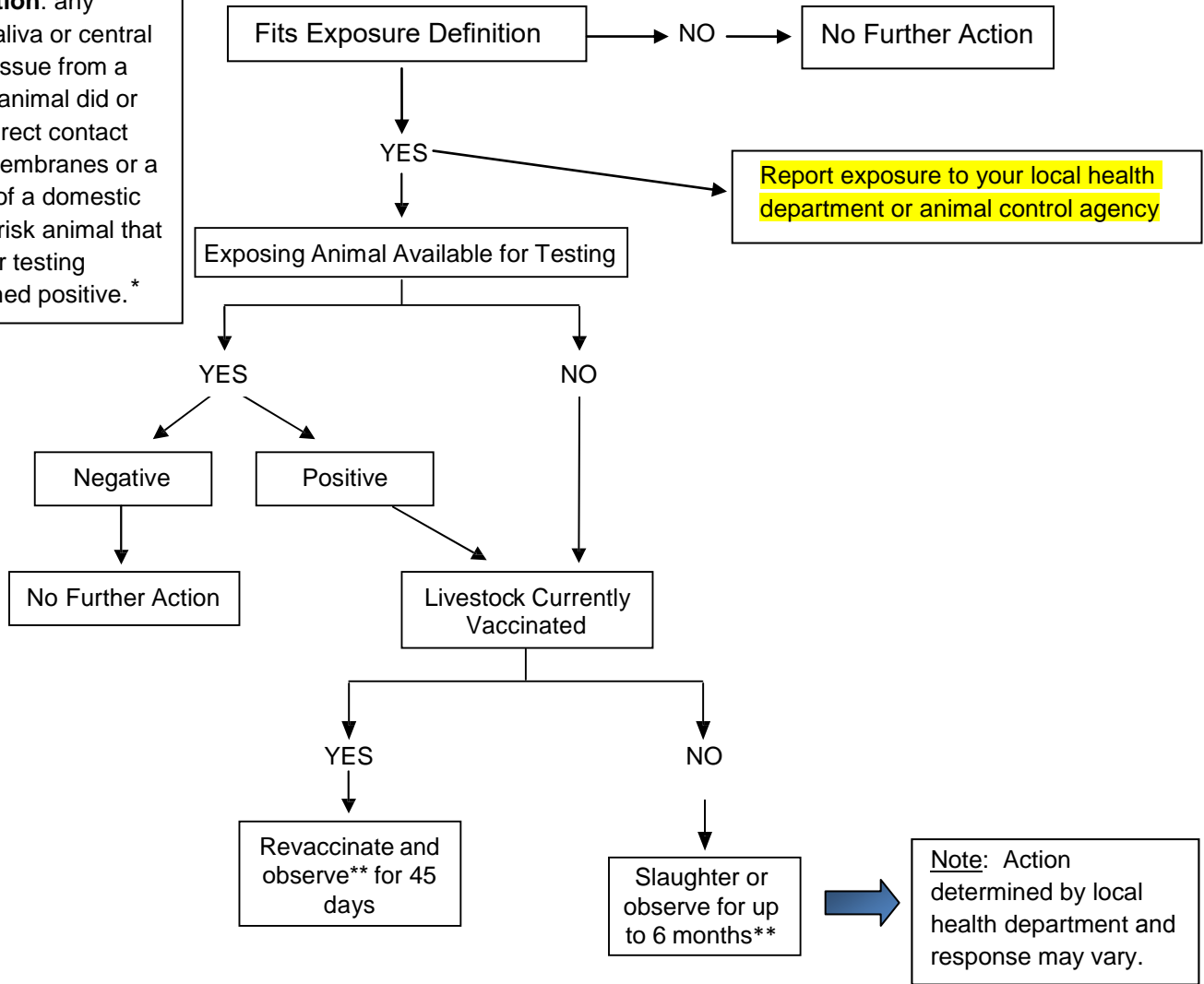


# Virginia Guidelines for Rabies Prevention and Control

<https://www.vdh.virginia.gov/animal-contact-human-health/rabies-control/virginia-guidelines-for-rabies-prevention-and-control/>

## LIVESTOCK RABIES EXPOSURE DECISION TREE

**Exposure Definition:** any situation where saliva or central nervous system tissue from a rabid or high risk animal did or could have had direct contact with the mucus membranes or a break in the skin of a domestic animal. Any high risk animal that is not available for testing should be presumed positive. \*



**Note:** If clinical signs develop in livestock species under observation due to a rabies exposure, the animal(s) should be examined by a veterinarian. The local health department should also be notified and will determine the course of action.

\* See guidelines text for list of high and low risk animals  
 \*\* See guidelines text for more information about protocols for exposed livestock and observation description

Last updated: 2-2-2023