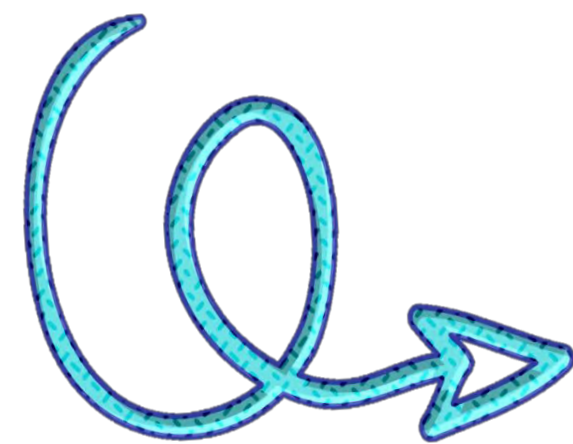


Migrant Labor Camp Data Analysis

Claire D. Crumpler | Office of Environmental Health Services | Cohort 3, 2025

Thank you to Briana Bill, Tessa DeWalt, and everyone within the Office of Environmental Health Services

Let's
Connect!

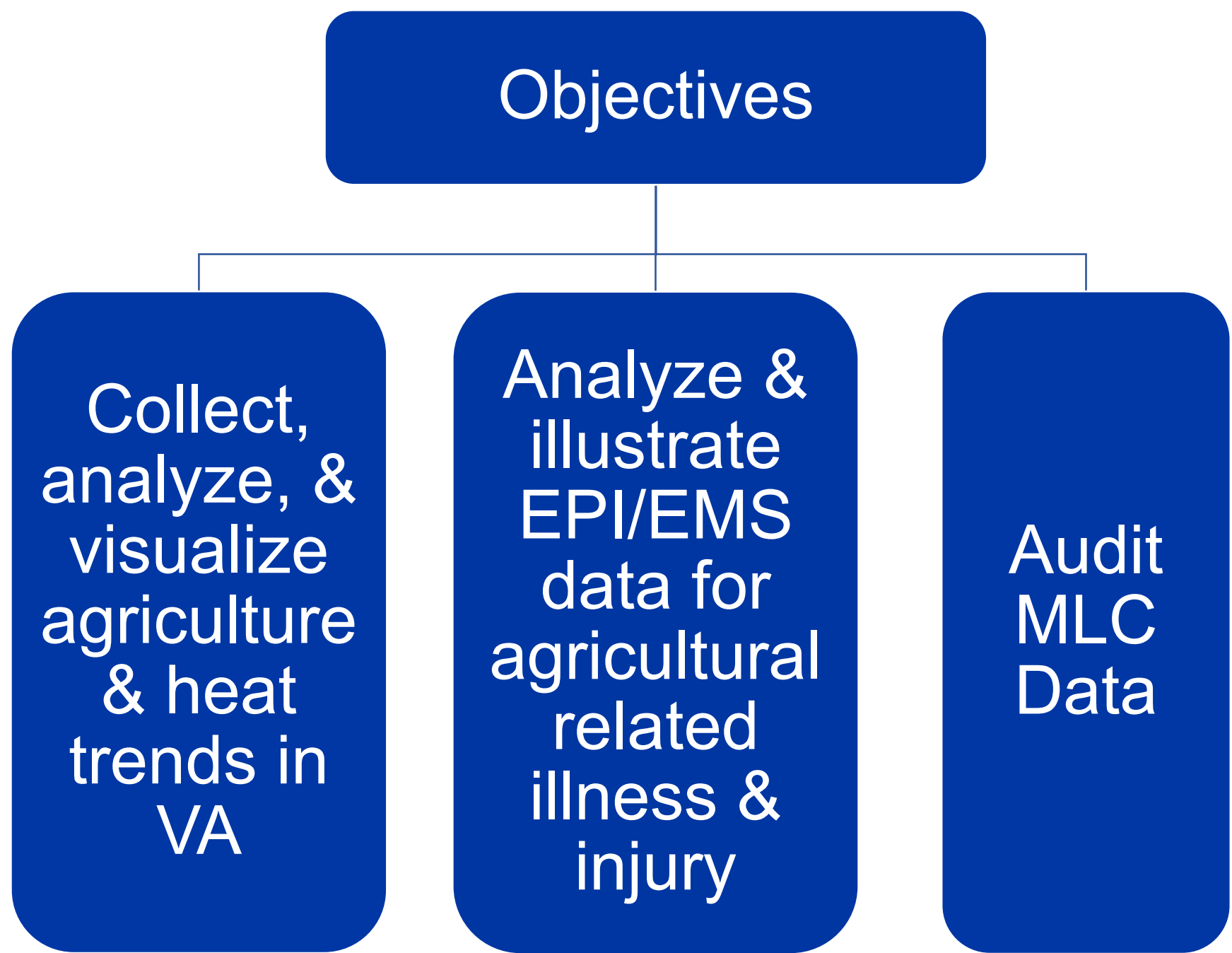


Background

- **Migrant Labor Camps (MLC):**
one or more structures being used as living quarters for migrant workers
- VDH’s responsibility: inspecting MLCs (pre-opening, routine, and complaint inspections), and issuing permits

Purpose

- Provides support to the VDH MLC regulatory program by providing data analytics

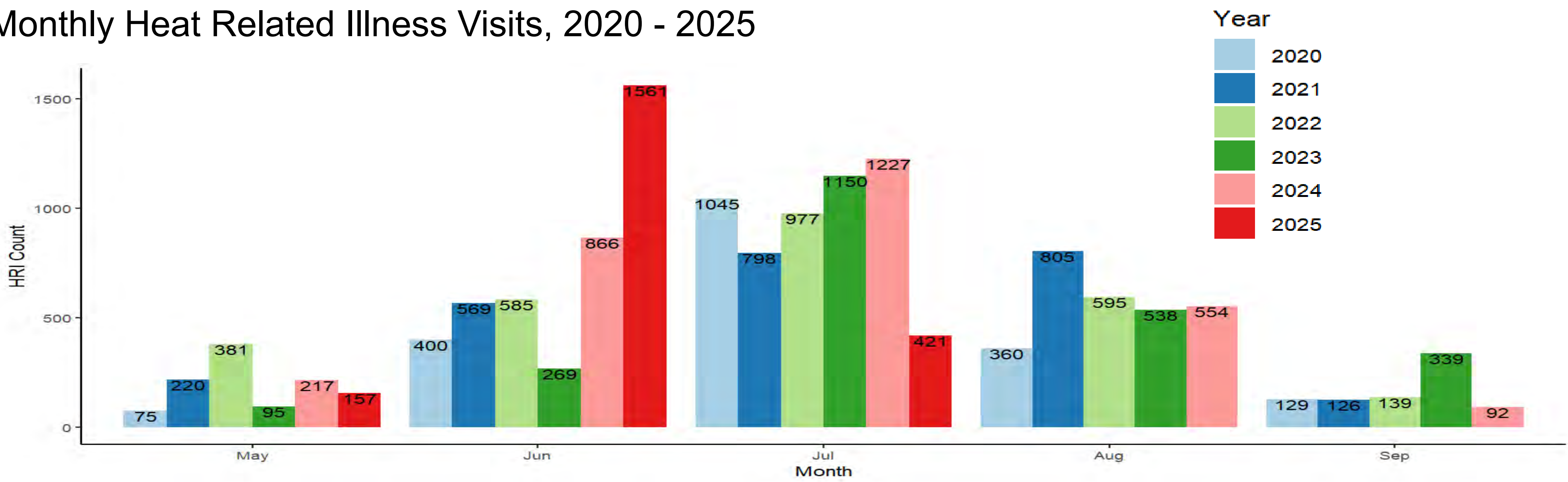


Data Sources

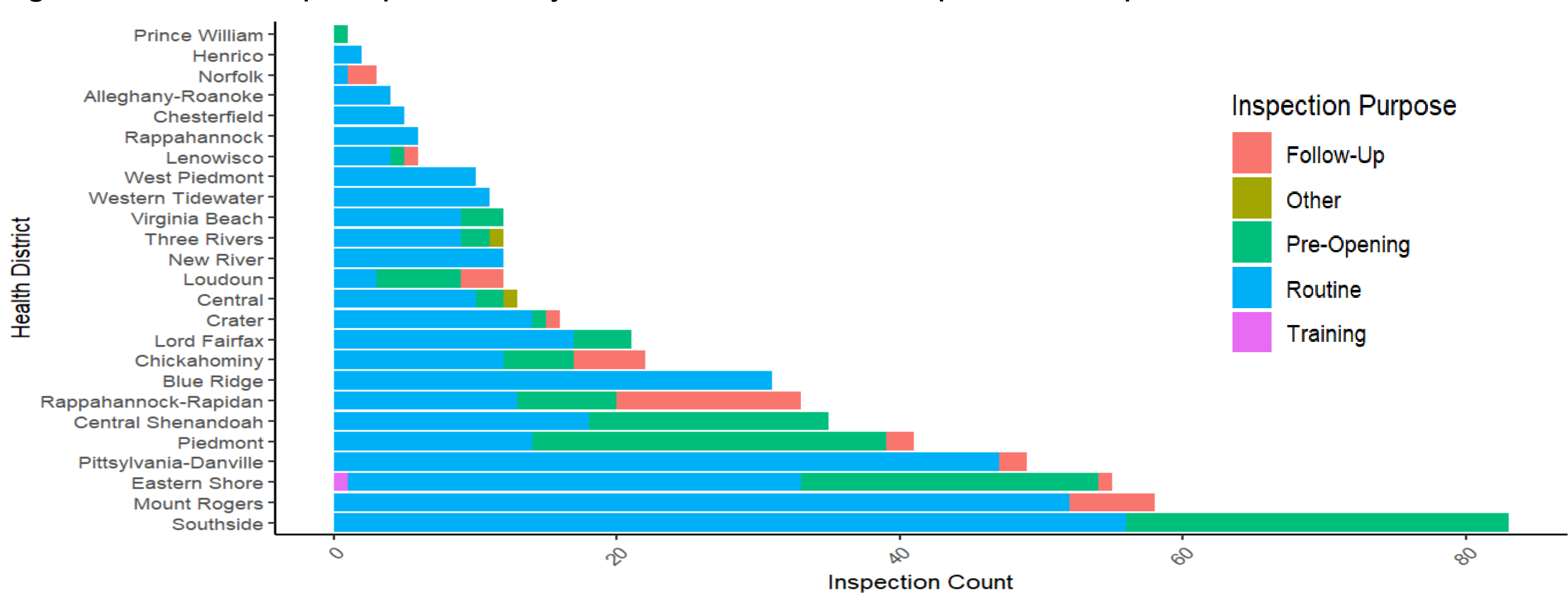
- Heat & Agricultural Data:
 - VDH ESSENCE
 - USDA
- MLC Audit:
 - Environmental Health Database (EHD)
- Data Programs:
 - RStudio
 - Tableau

Results

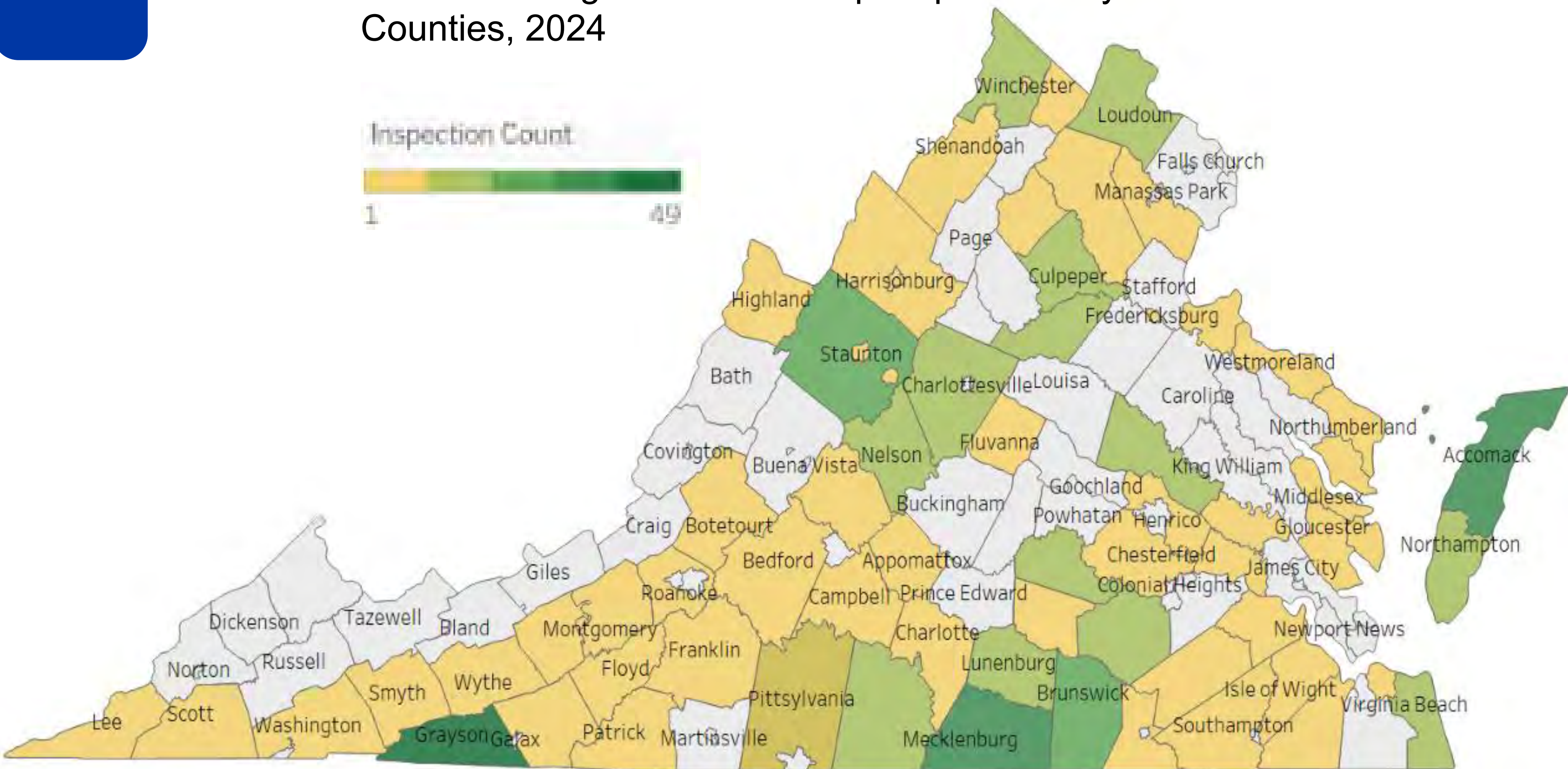
Monthly Heat Related Illness Visits, 2020 - 2025



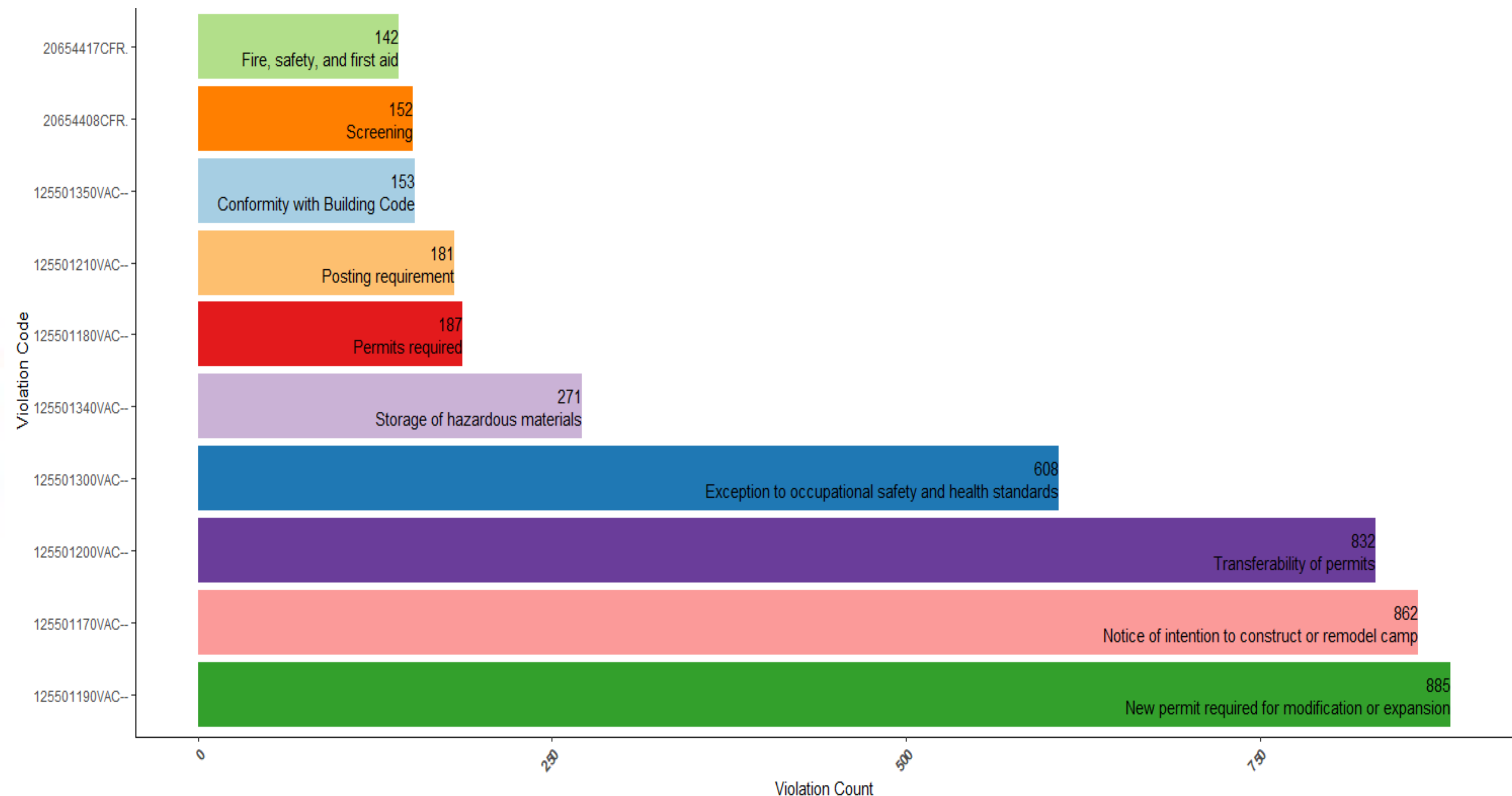
Migrant Labor Camp Inspections by Health District and Inspection Purpose, 2024



Number of Migrant Labor Camp Inspections by VA Counties, 2024



Top Ten Most Frequently Marked MLC Violations, 2020 – July 10th, 2025



Data Limitations

- Lack of VA heat data:
 - heat published by CDC had data quality inconsistencies and lacked data for several localities
- EPI Data:
 - contained limited data on disease outbreaks at MLC facilities
- EMS Data:
 - lacked indicators to confirm if injuries occurred at an MLC
 - only three options for age group: 0-24, 25-64, 65+

Data Rationale

- Provides a public health reasoning for potential regulatory amendments
- Analyzed data to enhance insight into the VDH MLC program