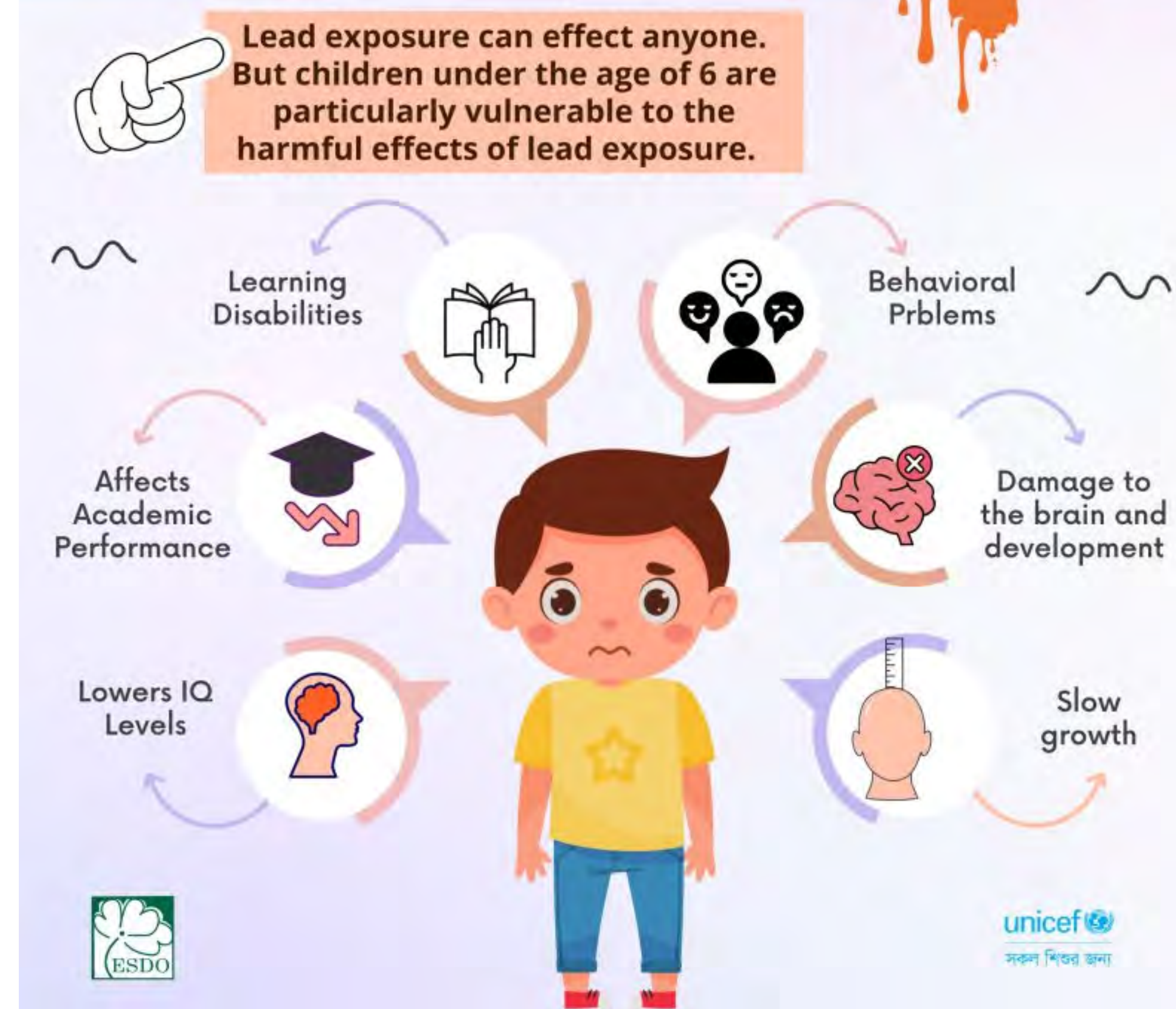




## Issue Identified

- Plumbing containing lead in childcare facilities poses risk in detrimental health effects in children.
- State regulation requiring lead testing is recent, and sampling statewide is still in progress. Data comparing lead results with risk factors is limited, but could assist targeting future sampling efforts.

### The Impact of Lead Exposure on Children



## Challenges

- Limited data on exact age of facilities and remediation efforts
- Geocoding on Tableau
- Economic justice screening data may not always depict accurate locations
- Data is often restricted on blood lead level results due to data privacy
- Data taken at different times
- Analyzed limited sample of facilities due to time constraints of internship
- Eliminating sampling bias

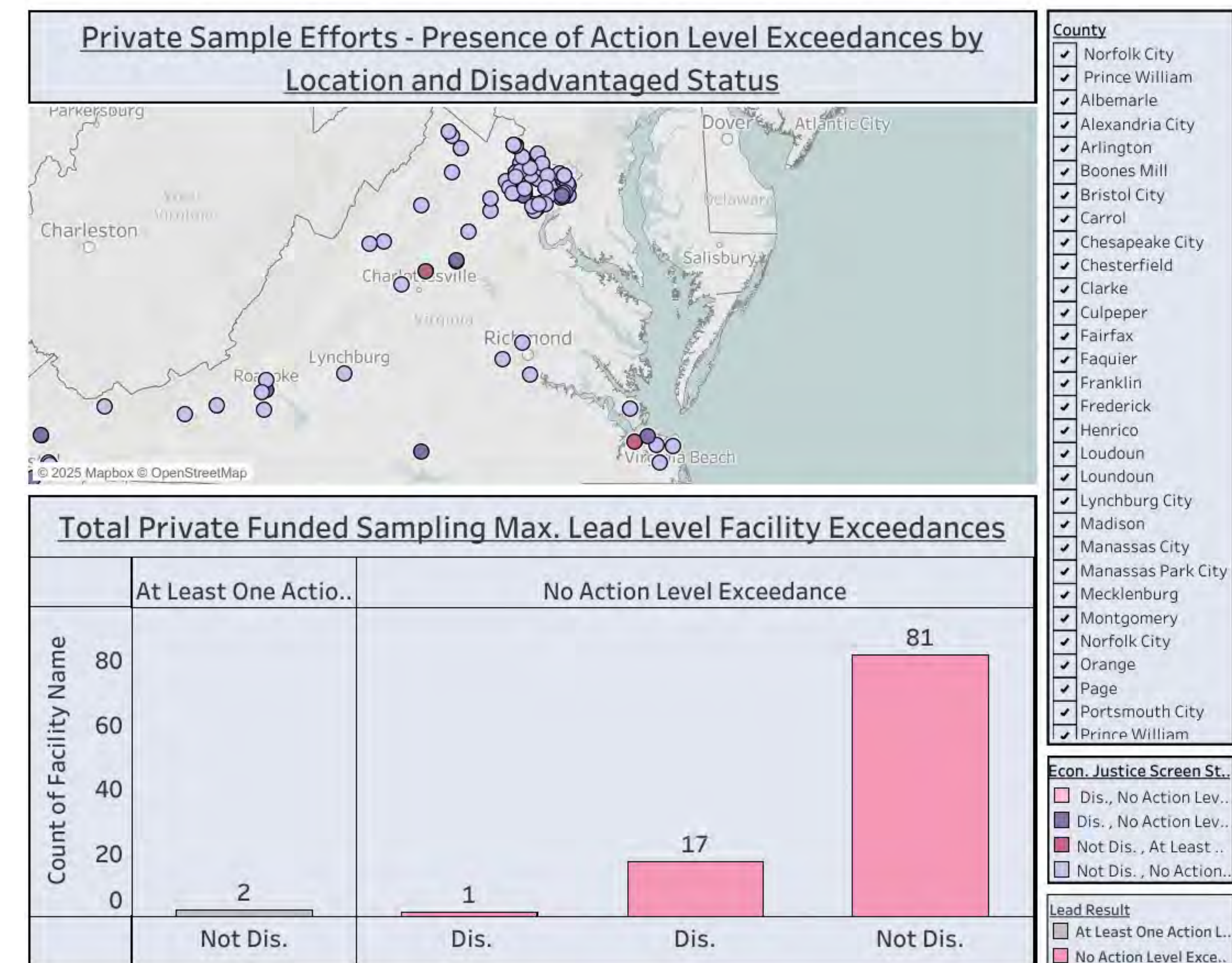
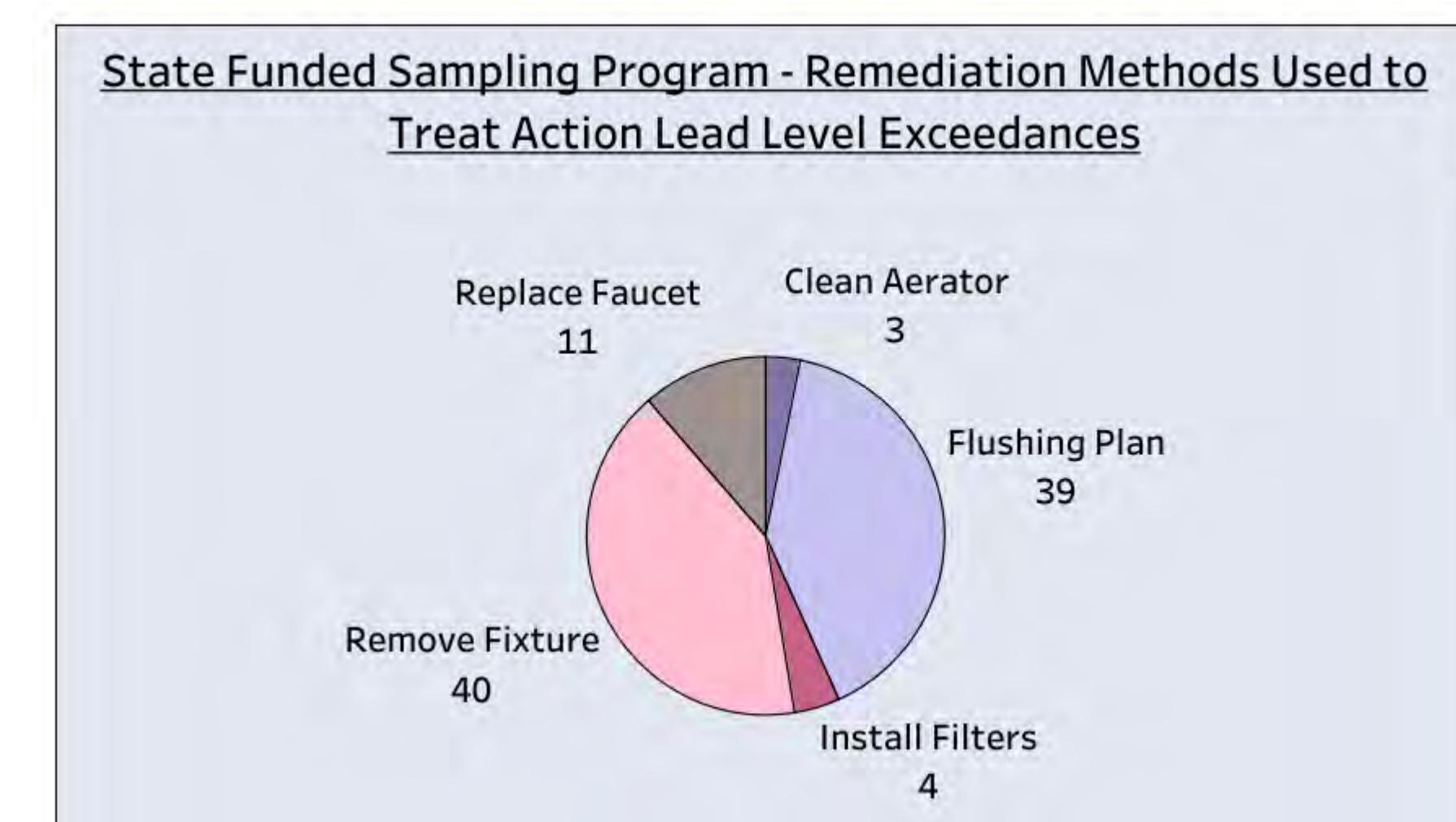
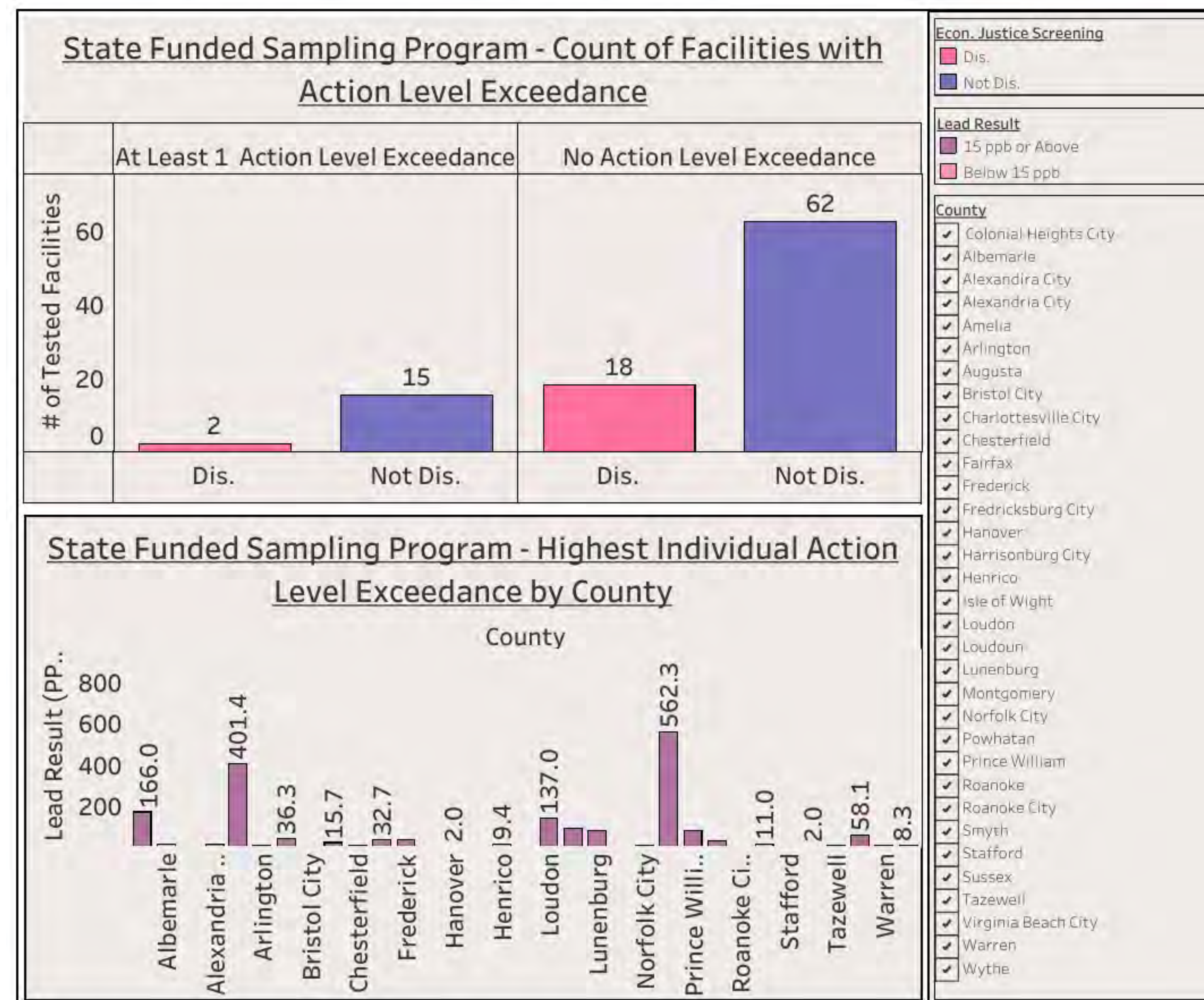
## Outputs

- Recorded lead sampling results for future analysis, identified targets for future testing, and confirmed remediation efforts.
- Analyzed risk factors to determine areas of higher risk of lead contamination in drinking water.



## Methods

- Input private and state sampled facilities results with name of facility, location, and economic justice screening status in excel.
- Graphed private/public sampled facilities with location and economic justice screening status on tableau, included childhood blood levels and remediation efforts
- Tools: Excel, Tableau
- Graphs: GIS Mapping, Bar Graphs, Pie Graphs



## Findings #1

- Compared blood level case data sampling results by location
- No correlation drinking water is not the main source

## Findings #2

- Compared remediation efforts to lead result exceedances
- Over 50% of remediation was faucet-based, implying an overall issue with faucets
- Private/state findings more non-disadvantaged results with less action Pb level exceedances.
- EPA WIIN Grant Funding used for testing

Special thanks my mentor, Jose Garcia, as well as the Internship Academy Directors, Jeff Stover and Bridget Cochran, for making the Academy possible. I also want to thank my partnerships in this project, Ashley Koski, Janine Kerr, and Andrew Tran from the Childhood Lead Poisoning Prevention Team, Anthony Hess, and 120 Water. Lastly, I would like to thank all my Cohort 3 Peers!

## Lead Sources

