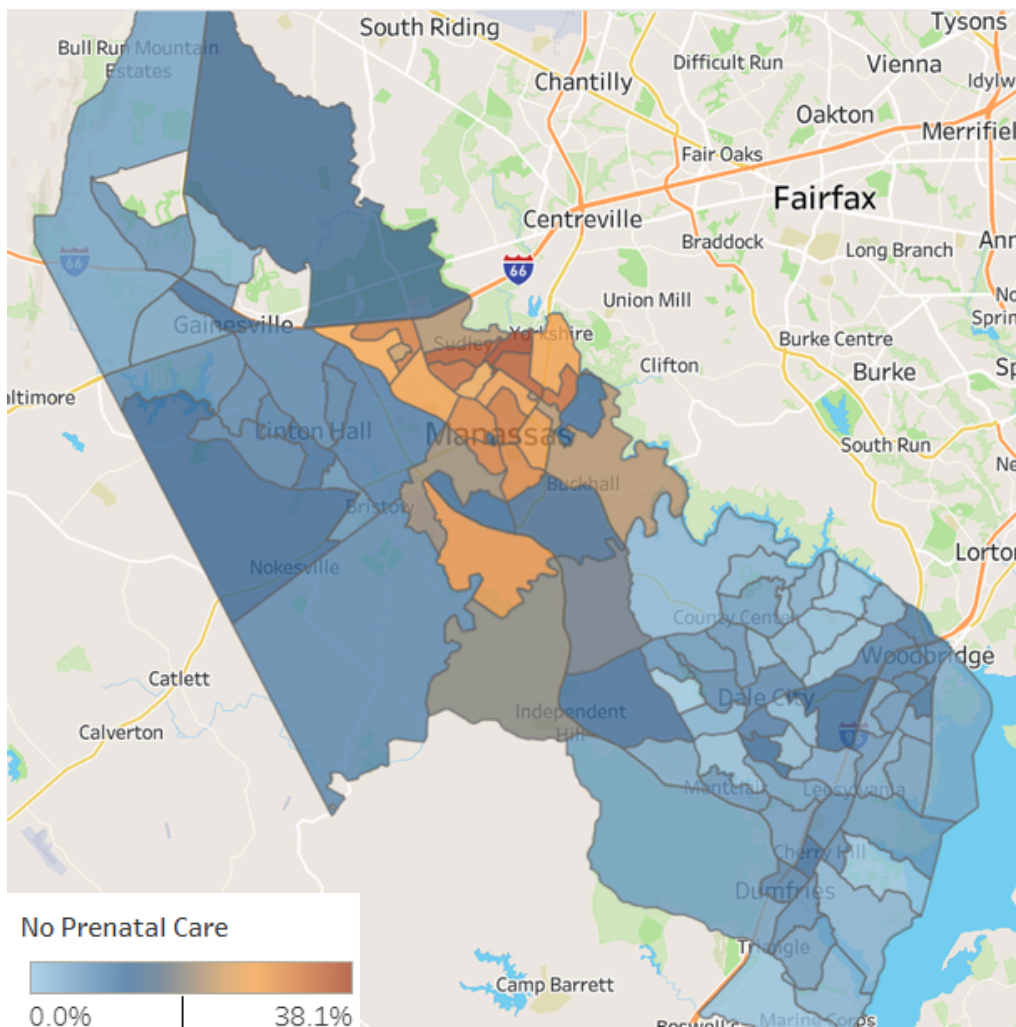


PWHD Prevalence Rates of No Prenatal Care in 2024

The following maps display Census tract-level prevalence rates of no prenatal care among the 6,750 mothers who gave birth in 2024 and who reside in Greater Prince William. The maps reveal sharp geographic concentrations: overall, the highest rates of no prenatal care cluster in the cities of Manassas and Manassas Park, where several tracts exceed 30%.

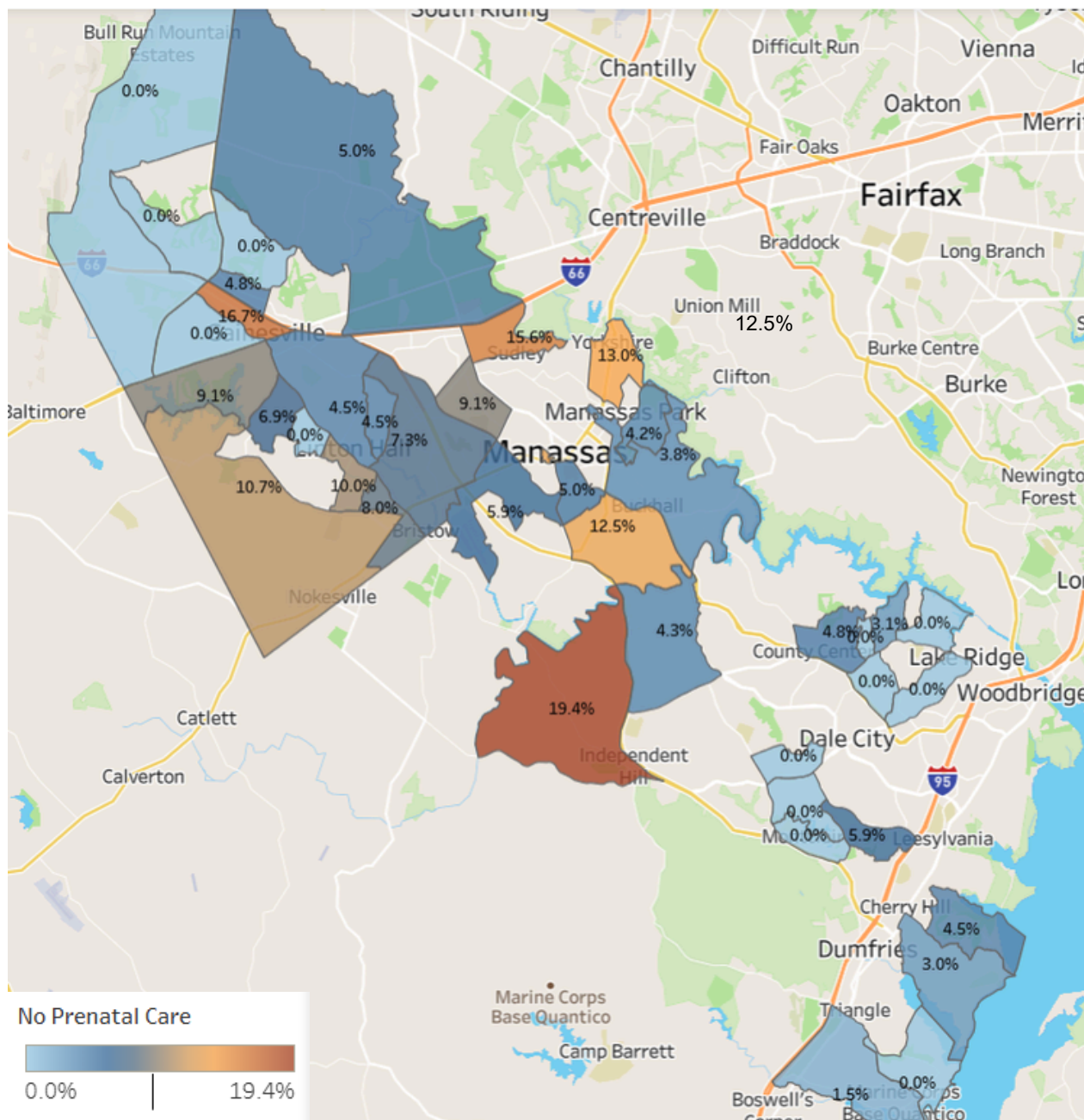
When stratified by race and ethnicity, disparities deepen—among Hispanic mothers, multiple tracts in Manassas and Manassas Park report rates above 40%, reaching 52.5% in one tract, meaning more than half of mothers in that area received no prenatal care before delivery. Among Black mothers, the highest rates appear in eastern Prince William County tracts near Woodbridge, Cherry Hill, and Kerrydale, while among White mothers, elevated rates are found in western and southern county tracts.

These patterns can help hospitals and providers identify where to focus outreach, strengthen referral pathways to programs like FAMIS Prenatal and WIC, and build care coordination strategies that reach mothers earlier in pregnancy.



Prevalence Rates of No Prenatal Care, White Race

Among mothers who self-identified as non-Hispanic White, residents in western and southern Prince William County Census tracts experienced elevated prevalence rates of no prenatal care in 2024.



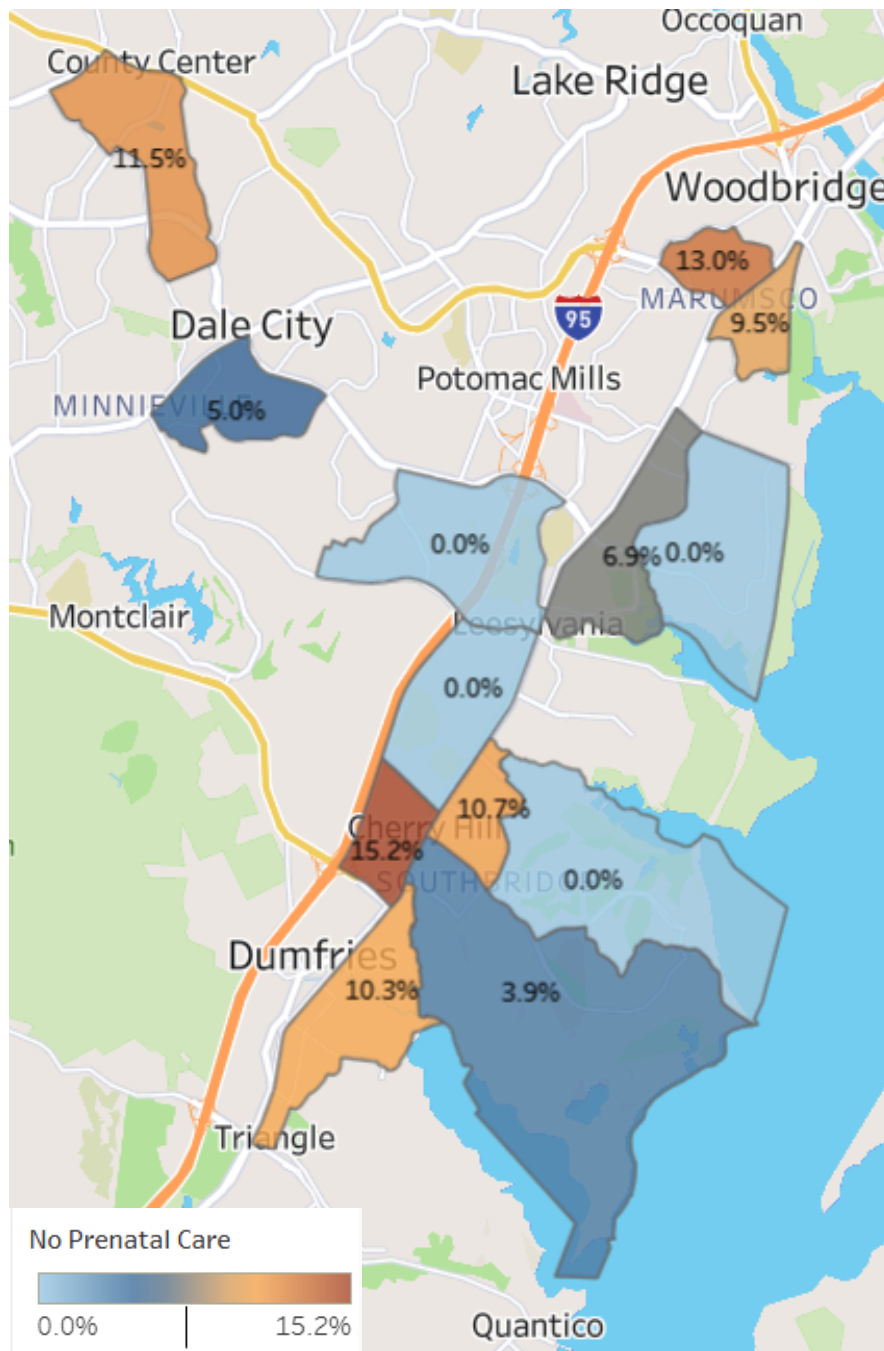
Source: Maternal & Child Health Indicators. (2024). Retrieved July 2025, from the Virginia Department of Health, Office of Vital Records; Natality Table.

PWHD Analysis: Geocoded residence of mothers who gave birth in 2024 who live in Prince William County, Manassas City, or Manassas Park Census tracts.

Data Visualization: Map of Census tracts with at least 20 births in 2024. A Census tract with 0.0% indicates mothers living in the Census tract had one or more reported prenatal care visits in a 2024 birth record.

Prevalence Rates of No Prenatal Care, Black Race

Among mothers who self-identified as non-Hispanic Black, residents in eastern Prince William County Census tracts experienced elevated prevalence rates of no prenatal care in 2024.



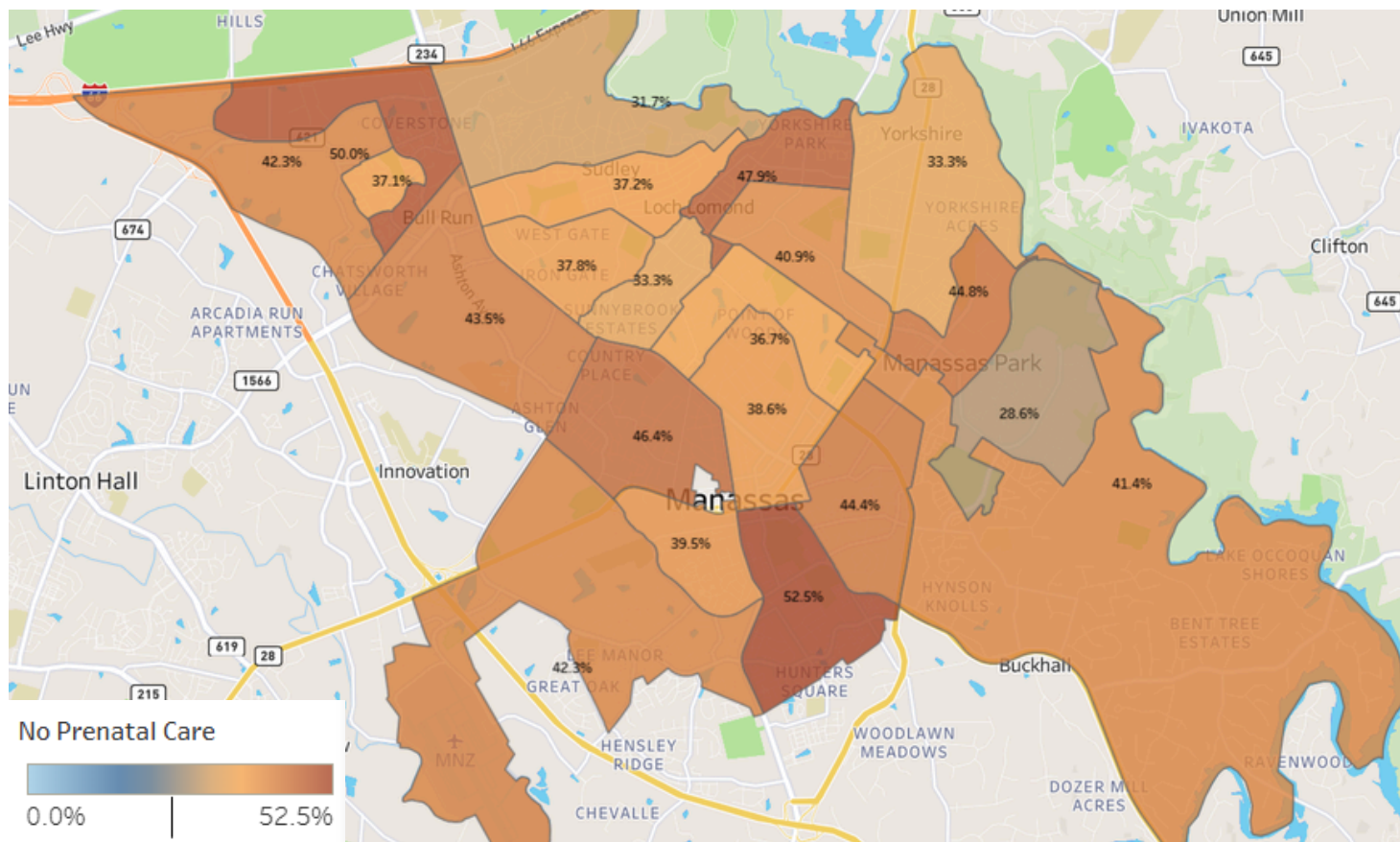
Source: Maternal & Child Health Indicators. (2024). Retrieved July 2025, from the Virginia Department of Health, Office of Vital Records; Natality Table.

PWHD Analysis: Geocoded residence of mothers who gave birth in 2024 who live in Prince William County, Manassas City, or Manassas Park Census tracts.

Data Visualization: Map of Census tracts with at least 20 births in 2024. A Census tract with 0.0% indicates mothers living in the Census tract had one or more reported prenatal care visits in a 2024 birth record.

Prevalence Rates of No Prenatal Care in 2024, Hispanic

Among mothers who self-identified as Hispanic, residents in the cities of Manassas and Manassas Park Census tracts experienced the highest prevalence rates of no prenatal care in 2024.



Source: Maternal & Child Health Indicators. (2024). Retrieved July 2025, from the Virginia Department of Health, Office of Vital Records; Natality Table.

PWHD Analysis: Geocoded residence of mothers who gave birth in 2024 who live in Prince William County, Manassas City, or Manassas Park Census tracts.

Data Visualization: Map of Census tracts with at least 20 births in 2024. A Census tract with 0.0% indicates mothers living in the Census tract had one or more reported prenatal care visits in a 2024 birth record.

