



Bonnie Fulford
Prince William Health District

August 28, 2025

Community Healthcare Coalition of Greater Prince William

Community Health Assessment (CHA) 2025

*A Collaborative Approach for Health
Accountability in Greater Prince William*



**BE HEALTHY
BE HAPPY**

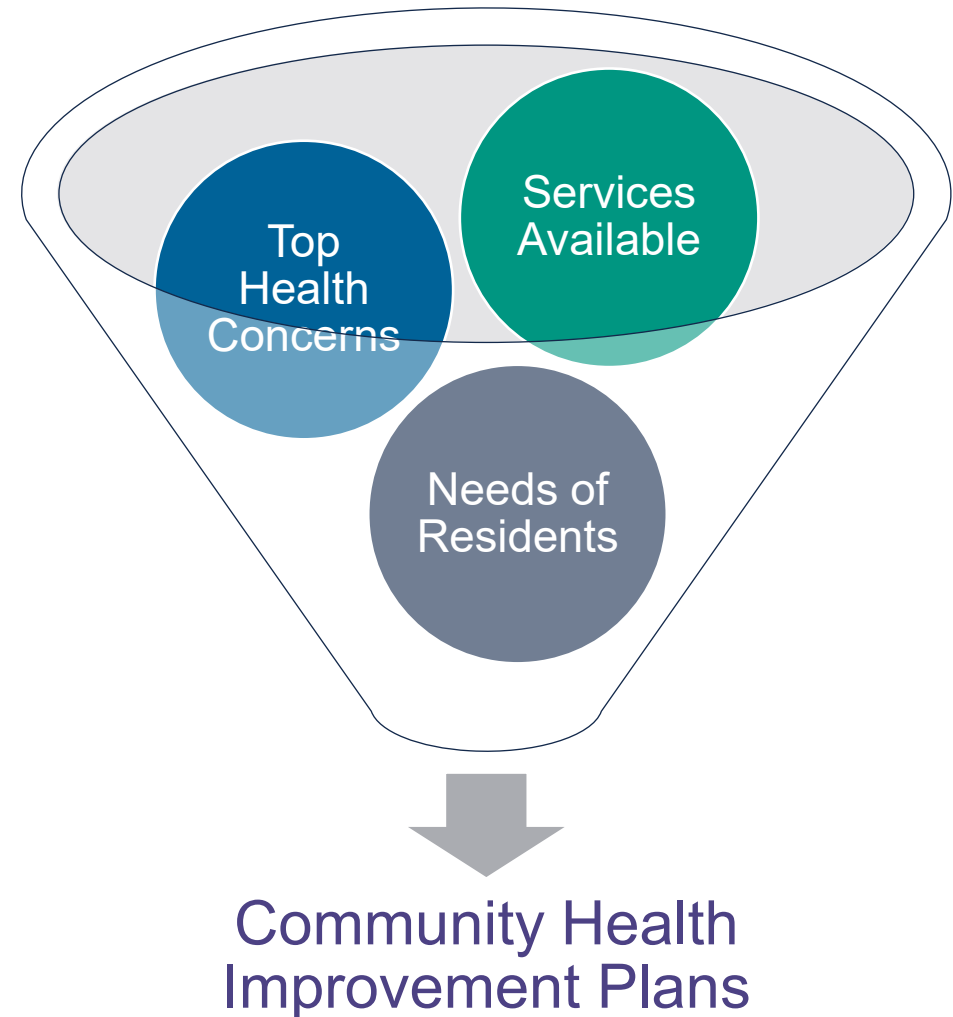
Community Healthcare Coalition Greater Prince William



What is the CHA?

Community Health Assessment

To learn about the health of
Greater Prince William



CHA in Action

By the Numbers:

- 1,990 survey responses
- 13 community conversations with residents
- 4 community partner community conversations
- 40+ community events and outreach
- 62K+ social media impressions
- 2 news releases, featured in Prince William Living

What We Did:

- Promoted across social media and networked with community partners to re-share or upload
- Canvassed businesses and neighborhoods in Greater Prince William
- Hosted community conversations with diverse partners
- Created bilingual materials and digital graphics
- Directly engaged with community voices



Visit vdh.virginia.gov/prince-william-cha-in-action for more details.



Community Health Data

Demographic Data

Social Determinants of Health

Key Health Indicators

The area's population is slightly younger

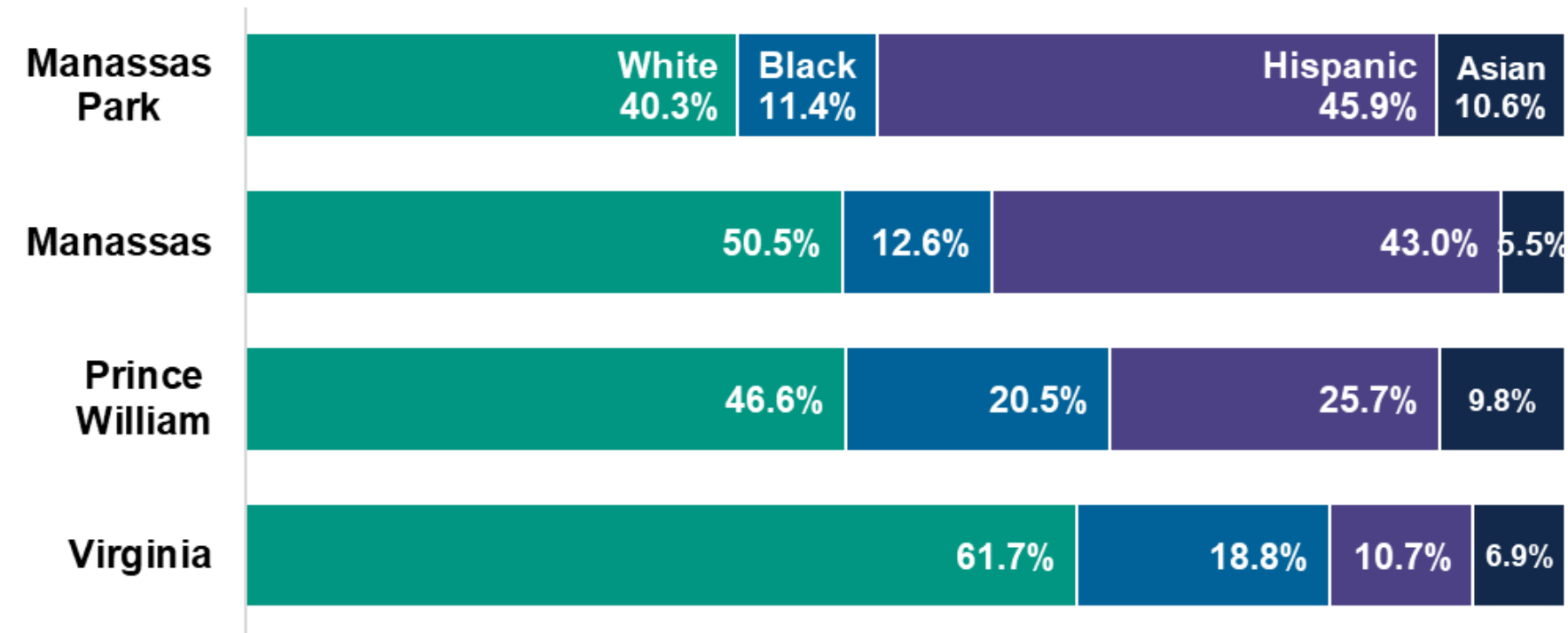
2019-2023 Population by Age

	Under 18 24.2%	Age 18-34 25.2%	Age 35-54 30.2%	Age 55+ 20.3%
Manassas Park				
Manassas	27.0%	23.4%	27.4%	22.2%
Prince William	26.6%	21.8%	29.1%	22.5%
Greater Prince William	26.6%	22.0%	29.0%	22.4%
Virginia	21.9%	22.8%	26.1%	29.2%

Data Source: U.S. Census Bureau. American Community Survey (ACS). 2019-2023

Greater Prince William is more diverse than Virginia overall

2023 Racial and Ethnic Profile



Data Source: U.S. Census Bureau. American Community Survey (ACS). 2019-2023



Community Insight

Community Health Survey

Community Conversations

CHA Survey Responses (n=1,990)

- Of the total response surveys, 1,698 Prince William County, Manassas City, and Manassas Park residents responded to the survey in English, Spanish, or Dari.



Race/Ethnicity

We heard from a diverse range of racial and ethnic groups



*The survey had 11 race/ethnicity categories, including multi-race. Due to low responses in some categories, "Asian" includes those reporting South Asian and East/Southeast Asian.

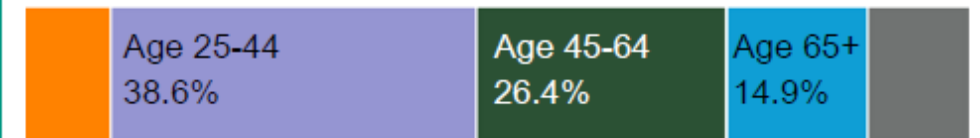
**Additional groups include those with fewer than 5% of responses, with the groups listed below. For a more detailed look at the data, please see Appendix C of the CHA.

- African
- American Indian/Alaska Native
- Another race/ethnicity not listed
- Middle Eastern/North African
- Multi Racial
- Native Hawaiian/Pacific Islander



Age

We heard from people ages 15 to 75+



Age 15-24
9.2%

Not Shared
10.8%

CHA Survey Responses (n=1,990)

“What are the biggest **HEALTH CONCERNS** in the community where you live?”

“Which **BEHAVIORS** need to be addressed in the community where you live?”

“What would **most IMPROVE health** in the community where you live?”

Overall top 3 most selected



Mental health



Chronic conditions



Dental problems



Eating unhealthy foods



Lack of exercise



Driving while drunk or high



Access to healthcare services



Affordable housing



Access to dental care

What are the **BIGGEST HEALTH CONCERNS** in the community where you live?

Rank	Overall Responses (n=1990)	Prince William County (n=1030)	City of Manassas (n=499)	City of Manassas Park (n=169)
1	Mental health (depression, anxiety)	Mental health (depression, anxiety)	Chronic conditions (cancer, diabetes)	Chronic conditions (cancer, diabetes)
2	Chronic conditions (cancer, diabetes)	Chronic conditions (cancer, diabetes)	Mental health (depression, anxiety)	Dental problems
3	Dental problems	Violence and crime in the community	Dental problems	Mental health (depression, anxiety)

BY AGE: What are the **BIGGEST HEALTH CONCERNS** in the community where you live?

Rank	Overall Responses (n=1990)	Age 15-24 (n=183)	Age 25-44 (n=769)	Age 45-64 (n=526)	Age 65-75+ (n=297)
1	Mental health (depression, anxiety)	Mental health (depression, anxiety)	Mental health (depression, anxiety)	Mental health (depression, anxiety)	Aging-related concerns (dementia, falls)
2	Chronic conditions (cancer, diabetes)	Diseases that can spread (flu, tuberculosis)	Chronic conditions (cancer, diabetes)	Chronic conditions (cancer, diabetes)	Mental health (depression, anxiety)
3	Dental problems	Chronic conditions (cancer, diabetes)	Dental problems	Violence and crime in the community	Chronic conditions (cancer, diabetes)

Which **BEHAVIORS** need to be addressed in the community where you live?

Rank	Overall Responses (n=1990)	Prince William County (n=1030)	City of Manassas (n=499)	City of Manassas Park (n=169)
1	Eating unhealthy foods	Eating unhealthy foods	Eating unhealthy foods	Cannabis (marijuana) misuse
2	Lack of exercise	Lack of exercise	Driving while drunk or high	Alcohol misuse (excessive drinking)
3	Driving while drunk or high	Driving while drunk or high	Lack of exercise	Drinking sugary beverages

BY AGE: Which BEHAVIORS need to be addressed in the community where you live?

Rank	Overall Responses (n=1990)	Age 15-24 (n=183)	Age 25-44 (n=769)	Age 45-64 (n=526)	Age 65-75+ (n=297)
1	Eating unhealthy foods	Eating unhealthy foods	Eating unhealthy foods	Eating unhealthy foods	Isolation or loneliness
2	Lack of exercise	Driving while drunk or high	Lack of exercise	Lack of exercise	Lack of exercise
3	Driving while drunk or high	Bullying (physical, verbal, online)	Alcohol misuse (excessive drinking)	Driving while drunk or high	Driving while drunk or high

What would **MOST IMPROVE HEALTH** in the community where you live?

Rank	Overall Responses (n=1990)	Prince William County (n=1030)	City of Manassas (n=499)	City of Manassas Park (n=169)
1	Access to healthcare services	Access to healthcare services	Access to healthcare services	Access to healthcare services
2	Affordable housing	Affordable housing	Affordable housing	Affordable housing
3	Access to dental care	Affordable healthy food	Access to dental care	Access to dental care

BY AGE: What would MOST IMPROVE HEALTH in the community where you live?

Rank	Overall Responses (n=1990)	Age 15-24 (n=183)	Age 25-44 (n=769)	Age 45-64 (n=526)	Age 65-75+ (n=297)
1	Access to healthcare services	Access to healthcare services	Access to healthcare services	Access to healthcare services	Affordable housing
2	Affordable housing	Affordable housing	Affordable housing	Affordable housing	Mental health services
3	Access to dental care	Affordable healthy food	Access to dental care	Affordable healthy food	Access to healthcare services

**Which
BEHAVIORS
need to be
addressed in the
community
where you live?**

Behavior Type	Count
Eating unhealthy foods	547
Lack of exercise	486
Driving while drunk or high	452
Bullying (physical, verbal, online)	404
Isolation or loneliness	367
Alcohol misuse (excessive drinking)	365
Drug use / prescription drug misuse	354
Domestic violence	352
Technology addiction	340
Cannabis (marijuana) misuse	311
Drinking sugary beverages	286
Vaping / e-cigarette use	270
Not being up-to-date on vaccines	185
Elder abuse or neglect	167
Not safely storing guns	162
Tobacco use (cigarettes, cigars, snuff)	150
Gaming and online gambling	110
Unsafe sex	81

BY R/E: Which BEHAVIORS need to be addressed in the community where you live?

Rank	Overall Responses (n=1990)	White (n=553)	Hispanic or Latino (n=625)	Black or AA (n=165)	Other R/E* (n=394)
1	Eating unhealthy foods	Lack of exercise	Driving while drunk or high	Eating unhealthy foods	Eating unhealthy foods
2	Lack of exercise	Isolation or loneliness	Lack of exercise	Lack of exercise	Bullying (physical, verbal, online)
3	Driving while drunk or high	Eating unhealthy foods	Eating unhealthy foods	Domestic violence	Alcohol misuse (excessive drinking)

* Other race and ethnicity identified includes the following survey categories: African, American Indian or Alaska Native, East/Southeast Asian, Middle Eastern or North African, Native Hawaiian or Other Pacific Islander, South Asian, Multi Racial with two or more categories selected, or Another race/ethnicity not listed.

Community Conversations

Who We Want to Hear From

- Residents from both the Eastern and Western parts of the Greater Prince William region
- Parents/Guardians of children
- LGBTQIA+ community members
- Seniors/Aging individuals
- Individuals in recovery
- Members of the Military and their Families
- Individuals living with disabilities
- Teens
- Individuals who speak English as a second language

17 Community Conversations

- Community Healthcare Coalition of Greater Prince William Members: Aug. 24, 2024
- [Casa BruMar Foundation](#): Sept. 28, 2024
- [Literacy Volunteers of America-Prince William](#): Nov. 20, 2024, Jan. 27 & 31, 2025
- [Dream in NOVA](#) (Spanish conversation): Dec. 4, 2024 & Jan. 29, 2025
- [Prince William Islamic Center](#): Jan. 3, 2025
- [Sentara Northern Virginia Medical Center](#): January 16, 2025
- [Manassas Muslim Association](#): Jan. 11, 2025
- [Arc of Greater Prince William](#) (Virtual): Jan. 24, 2025
- [Mason and Partners \(MAP\) Clinic](#): Jan. 28, 2025
- [PWC Office of Community Safety](#) & [Manassas Senior Center](#): Jan. 30, 2025
- [Equality Prince William](#): Feb. 5, 2025
- [Woodbridge Senior Center](#): Feb. 19, 2025
- Youth Community Conversation (Virtual): Feb. 25, 2025
- [NOVA Vets \(Northern Virginia Veterans Association\)](#) (Virtual): Feb. 28, 2025



Community Conversations (n=151)



Health & Social Services

Healthcare Access



Mental Health Support

“People without health insurance do not go to the doctors for regular checkups or when they are sick. People are afraid to lose their job if they ask permission to go to the doctor...”



Basic Needs & Economic Stability

Employment, Sustainable Wages, Job Stability

“Prioritizing basic needs makes it difficult to focus on aspects of health beyond physical well-being...”



Education & Awareness

Multilingual Communication and in Easy to Find Locations

“We live in times right now where we have a lot of information, but we don’t know how to use it.”

Need for translated materials and multiple ways to conduct outreach

“We live in times right now where we have a lot of information, but we don’t know how to use it.”

Need bilingual staff, cultural competence

“We have Spanish translators. But we need Arabic, Urdu, Persian.”

Community Conversations (n=151)



Community
Connectedness &
Engagement

Community Partnerships

“PWC Public Libraries offer more than just reading – they foster a welcoming atmosphere where kindness + safety are always felt.”



Safety & Environmental
Concerns

Neighborhood Infrastructure &
Complete Streets



“I’d wait for a bus for 3 hours and in rain it’s bad.”



Power & Social Policy
Context

Opportunities for All to Participate
and Thrive

“A healthy place would be friendly & free from hate, with places / activities for all.”



Immigrants, seniors, people with disabilities face service barriers

“For those with a developmental disability, or multiple disabilities, can be hard to access transportation or mental health services.”

Push for fair services for all groups

“Many of our Veterans are suffering. People do not understand how disconnected they are from technology and the accommodations that they need.”

Top 3 CHA Priority Health Issues



Improve access to behavioral health services



Expand resources to manage chronic conditions



Address social determinants of health

Feedback on Results

1. Which results stood out the most to you?
2. Might you be interested in participating with the Community Health Care Coalition as an individual representing your peers?

Share CHA Feedback

Diane Anderson, DrPH, MPH

Population Health Supervisor / Lead
Epidemiologist

Prince William Health District

diane.anderson@vdh.virginia.gov

Phone: (703) 792-6333

Join the Coalition!

Michele Burton, MSPH, MAT

Program Manager

Community Healthcare Coalition of Greater
Prince William

Institute for Public Health Innovation

mburton@institutephi.org

Phone: (202) 380-5273



BeHappyBeHealthyPrinceWilliam.com