



Organizational Structure Report

August 1, 2025



Overview

The Virginia Department of Health's (VDH) mission is to protect the health and promote the well-being of all people in Virginia, with the vision of being the healthiest state in the nation. The agency values a culture of service, equity and data driven decisions. VDH is comprised of a statewide Central Office in Richmond as well as regional offices of several Central Office related Programs, and 35 health districts, three of which are locally administered.

The VDH maintains five core strategic goals:

- Goal 1: Maintain a competent and valued workforce;
- Goal 2: Provide internal systems that deliver consistent and responsive support.
- Goal 3: Be a trusted source of public health information and services;
- Goal 4: Foster healthy, connected, and resilient communities; and
- Goal 5: Assure the conditions that improve health opportunity
-

The VDH is led by a State Health Commissioner appointed by the Governor of Virginia. The Health Commissioner oversees the strategic direction of the agency and provides advice and support to the Governor through the Secretary of Health and Human Resources. The Health Commissioner is supported by a Strategic Leadership Team (SLT) consisting of 13 agency leaders. Collectively, these senior level executives assist with navigating VDH through a complex statewide health landscape while promoting the well-being of all people in Virginia. The SLT consists of the following:

- The Chief Operating Officer;
- The Chief Deputy Commissioner;
- Two Deputy Commissioners;
- Two Assistant Deputy Commissioners;
- The Chief Financial Officer;
- The Assistant Chief Financial Officer;
- The Chief Information Officer;
- The Director of Community Relations;
- The Workforce Development and Engagement Director;
- The Director of Policy and Planning; and
- The State Epidemiologist* (this position is not organizationally within the Office of the Commissioner)

Structure and Responsibilities

Programs within VDH are administered by offices and health districts which report through specific SLT members, as follows:

Operations Administration

The Chief Operating Officer (COO) is appointed by the Governor and is responsible for overall Operations of the Agency. He works closely to liaise with the Office of the Secretary of Health and Human Resources. Additionally he has oversight of several key offices within the Agency and supports the Health Commissioner via shared oversight of two offices and information security operations, as well as primary oversight of additional programs deemed critical to agency operational effectiveness. The COO oversees the Monthly Operating Review process of all Central Offices Programs. Additionally he works with Deputy Commissioners and other Chiefs to ensure Operational objectives are achieved in each business unit.

The [Office of Licensure and Certification](#), which works to ensure the quality of healthcare delivered by providers is safe, cost effective, and compliant with state and federal laws.

- The [Office of Human Resources](#), which facilitates hiring and employee relations for VDH's statewide Central Offices in Richmond and the 32 state-administered LHDs.
- The [Office of Internal Audit](#), which promotes a culture of accountability, collaboration, and best practices through the delivery of independent and risk-based auditing services that add value and encourage efficiency and effectiveness in public health programs and operations.
- [Information Security](#), which is managed by the Chief Information Security Officer, and focuses on security of all VDH data and related threats impacting the agency.
- [Community Relations](#), which works closely with public, private and academic partners, focusing on strategic communications to effectively tell the agency's unique public health story, marketing key functions that positively impact health and well-being, and building public trust. Community Relations oversees agency [Workforce Development and Engagement](#), which focuses on workplace culture

August 1, 2025

and training that enhances employee growth and a sense of belonging. This team works closely with all Offices and health districts on employee engagement activities and related tools. This team also includes the agency's Training Unit.

Community Health Services

The Chief Deputy and Assistant Deputy Commissioner for Community Health Services oversee all Community Health Services (CHS) activities across statewide health districts and within the central office. There are 35 health districts statewide. Three districts are locally administered: Fairfax, Arlington and Loudoun. The remaining 32 districts are administered by the state. Ten districts are currently joined to form 5 combined districts: Lenowisco and Cumberland Plateau; Pittsylvania/Danville and Southside; Peninsula and Hampton; Roanoke and Alleghany; and Richmond and Henrico. Central Virginia and West Piedmont were previously combined but were separated during the past year. The remaining 22 districts operate as single health district entities.

Organizing public health services into districts allows the state's public health needs to be managed at a community level by individuals knowledgeable of local populations. Each district is unique but has a similar structure, with operations overseen by a district director. Combined districts are jointly managed on a long-term basis by a single district director.

The Code of Virginia was changed on July 1, 2022, to allow non-physicians to serve as district directors. If the district director is not a licensed physician, they are supported by a licensed medical officer to help manage clinical services. As of June 10, 2025, VDH has hired 10 non-physician district directors for the following districts: Eastern Shore, Mount Rogers, Lenowisco-Cumberland Plateau, Lord Fairfax, Three Rivers, Blue Ridge, Western Tidewater, Prince William, Rappahannock-Rapidan and West Piedmont. Currently, two health district director positions are vacant – Arlington and Central Shenandoah.

All health districts have traditional service areas: Environmental Health, Epidemiology, Business Operations, Human Resources, Clinical Services and the Virginia Women Infants & Children (WIC) program. In addition, each district has an individual serving as an Emergency Preparedness Coordinator. Some districts have Population or Community Health teams. The districts interact with the public in the day-to-day actions of public health, providing services such as vaccinations, disease contact tracing, and restaurant inspections. CHS also contains a centralized operations office, with staff who assist districts through assistance and standardized processes for business operations, human resources and client services.

CHS is currently conducting a Regional Director Pilot which aims to assess a regional leadership model for enhanced support and coordination statewide. Four District Directors are dedicating 25% of their time to serve as Pilot Regional Directors across 4 defined regions. CHS is partnering with Process Improvement Analysts from Government and Regulatory Affairs to evaluate the pilot and guide future structural decisions.

Governmental & Regulatory Affairs

The Deputy Commissioner for Governmental and Regulatory Affairs oversees activities related to policy, legislative, and regulatory issues. This deputy area coordinates VDH's responsibilities involving General Assembly sessions and legislative liaising, including oversight, preparation and review of draft bills, and submitting legislative action summaries and enrolled bill reviews. This area also coordinates VDH responsibilities involving the state regulatory process, including conducting periodic reviews of regulations, and developing regulatory actions for consideration by the State Board of Health. Additional responsibilities of this deputy area include administration of the State Board of Health, HIPAA compliance, records management, language access and constituent mail response. The Deputy Commissioner for Governmental and Regulatory Affairs also oversees two offices, one unit and the Institutional Review Board:

- The [Office of Communications](#), which produces press releases, bulletins and multimedia necessary to effectively communicate VDH priorities, needs and procedures. This office also coordinates VDH responses to FOIA requests.
- The [Policy and Planning unit](#) leads VDH strategic planning, accreditation, performance management, quality improvement, and administrative policy processes. Additionally, the unit oversees and coordinates the agency's legislative and regulatory tasks alongside general public policy development.
- The [VDH Institutional Review Board \(IRB\)](#), which coordinates research-related activities that involves agency data. This may be in coordination with VDH Offices, LHDs, institutions of higher education or combinations thereof.

Population Health and Preparedness

The Deputy Commissioner and Assistant Deputy Commissioner for Population Health and Preparedness oversee nine offices, managed predominately from the VDH Central Office in Richmond, VA. These nine offices include the following:

- The [Office of Drinking Water](#), which protects public health by ensuring Virginians have a safe and adequate supply of drinking water. This Office consists of six regional field offices, including within the James Madison Building.

- The [Office of Emergency Medical Services](#), which plans and coordinates effective and efficient statewide Emergency Medical Services.
- The [Office of Emergency Preparedness](#), which facilitates the agency's response to emergencies impacting public health through preparation, collaboration, education and rapid intervention.
- The [Office of Environmental Health Services](#), which protects public health by preventing the transmission of diseases through food, milk, shellfish, water and sewage, and partners with other agencies to protect the environment.
- The [Office of Epidemiology](#), which protects public health and improves well-being by preventing and controlling endemic and emerging infectious diseases, as well as oversight of the state pharmacy.
- The [Office of Family Health Services](#), which improves well-being for Virginians by strengthening the health of families and communities, with a focus on programs that encourage child and family health, prevention and health promotion, including cancer prevention, and nutrition.
- The [Office of Health Equity](#), which assists with applying a health equity lens to VDH programs and areas, ensuring vulnerable populations are supported. The OHE also houses the State Office of Rural Health and multicultural engagement activities, as well as numerous scholarship programs.
- The [Office of the Chief Medical Examiner \(OCME\)](#), which works with multiple state and local entities and determines the cause and manner of deaths that occur under certain circumstances in Virginia. Services are completed through three regional centers. The OCME also manages the statewide anatomical program.
- The [Office of Radiological Health](#), which protects the public from unnecessary radiation exposure caused by a wide spectrum of applications used in the healing arts, research, educational institutions and industry.

Financial Administration

The Chief Financial Officer (CFO) and Assistant CFO oversee all financial and procurement-related activities across the agency, as well as newly established overarching grants management functions. The four offices within Financial Administration include the following:

- The [Office of Financial Management](#), which oversees the accounting and financial duties required to maintain financial operations within VDH offices and health districts.

- The [Office of Procurement & General Services](#), which coordinates the purchasing and distribution of non-IT equipment and supplies used by staff of the Central Office and health districts, as well as agency oversight of the James Madison building.
- The newly established [Office of Grants Management](#), which provides oversight for funding drawdowns related to all grants, as well as overarching grant guidance.
- The newly established [Office of Budget](#), which provides oversight of appropriations, forecasting and expenditure tracking for the agency.

Information Management & Administration

The Chief Information Officer oversees activities related to Information Technology (IT), public health informatics coordination and vital records/events. These areas include:

- The [Office of Information Management \(OIM\)](#), which manages IT at the Central Office and LHDs, including asset management, project management, and systems development/maintenance. OIM works closely with all offices and health districts, as well as the Virginia Information Technologies Agency to ensure appropriate oversight of IT-related activities.
- The [Center for Public Health Informatics](#), which supports programs through the provision of expertise in enterprise governance, analytics, development, translation, visualization, and dissemination of public health data and informatics knowledge to improve population health outcomes through use and understanding of data to better inform and promote public health.
- The [Office of Vital Records](#), which directs the system of vital records (reportable vital events including births, deaths, marriage and divorce) and serves as the custodian of its records, developing and distributing official state forms for vital record registration and issuance, and administering the provisions of the Code of Virginia and the Virginia Administrative Code.

Organizational Changes

As a large and complex agency, VDH routinely assesses organizational alignment to ensure continual internal and external needs and expectations are met. Recent Commissioner's Office and other key Central Office changes are listed below.

- Organizational realignment changes:
 - In November 2022 the Chief Operating Officer role was created as a gubernatorial appointment.
 - As referenced in the 2024 report, the Deputy Commissioner for Administration position was reconfigured as a CFO. The position was filled in November 2024.
 - This realignment incorporated two existing offices under the purview of the CFO, including the Office of Financial Management and the Office of Procurement and General Services.
 - Two new offices were created that are also under CFO management, including the Office of Grants Management and the Office of Budget.
 - In January 2025, the Office of Human Resources, the Office of Internal Audit and Chief Information Security Officer were realigned to report to the Chief Operating Officer, with dotted line supervision to the Health Commissioner.
 - The Chief of Staff position was transitioned to the Director of Community Relations under the Chief Operating Officer in January 2025 to focus efforts to an area of critical need and reduce perceived redundancies.
 - The Workforce Development and Engagement Director, including the Training unit, was moved under the COO in January 2025. The Training unit was previously under the supervision of the Office of Emergency Preparedness and the Office of Human Resources.
 - The Executive Assistant supporting GRA and the CFO was moved under the Workforce Development and Engagement Director in January 2025.
 - The CIO position became a separate position from the OIM Director in January 2025 and was incorporated into the Office of the Commissioner at that time.
 - The Office of Licensure and Certification was moved under the supervision of the COO in August 2025 to concentrate efforts on recruitment of Medical Facilities Inspectors (MFIs), long-standing leadership vacancies, and to drive operational efficiencies in survey and complaint investigations.
- The Assistant CFO is a new position filled in May 2025. This position takes the place of the Assistant Deputy Commissioner for Administration.
- The Assistant Deputy Commissioner for Community Health Services (CHS) was successfully filled in June 2025.
- The Public Health Policy and Planning unit director was filled in July 2025.

August 1, 2025

- The Deputy Commissioner for Population Health and Preparedness position was filled in August 2024.
- Four health district directors were appointed to serve as pilot regional health directors, in addition to their current roles. This occurred as part of a pilot program aimed at increasing routine operational oversight while decreasing span of control of 32 health directors by the Chief Deputy Commissioner for CHS. These appointments occurred in October 2024.

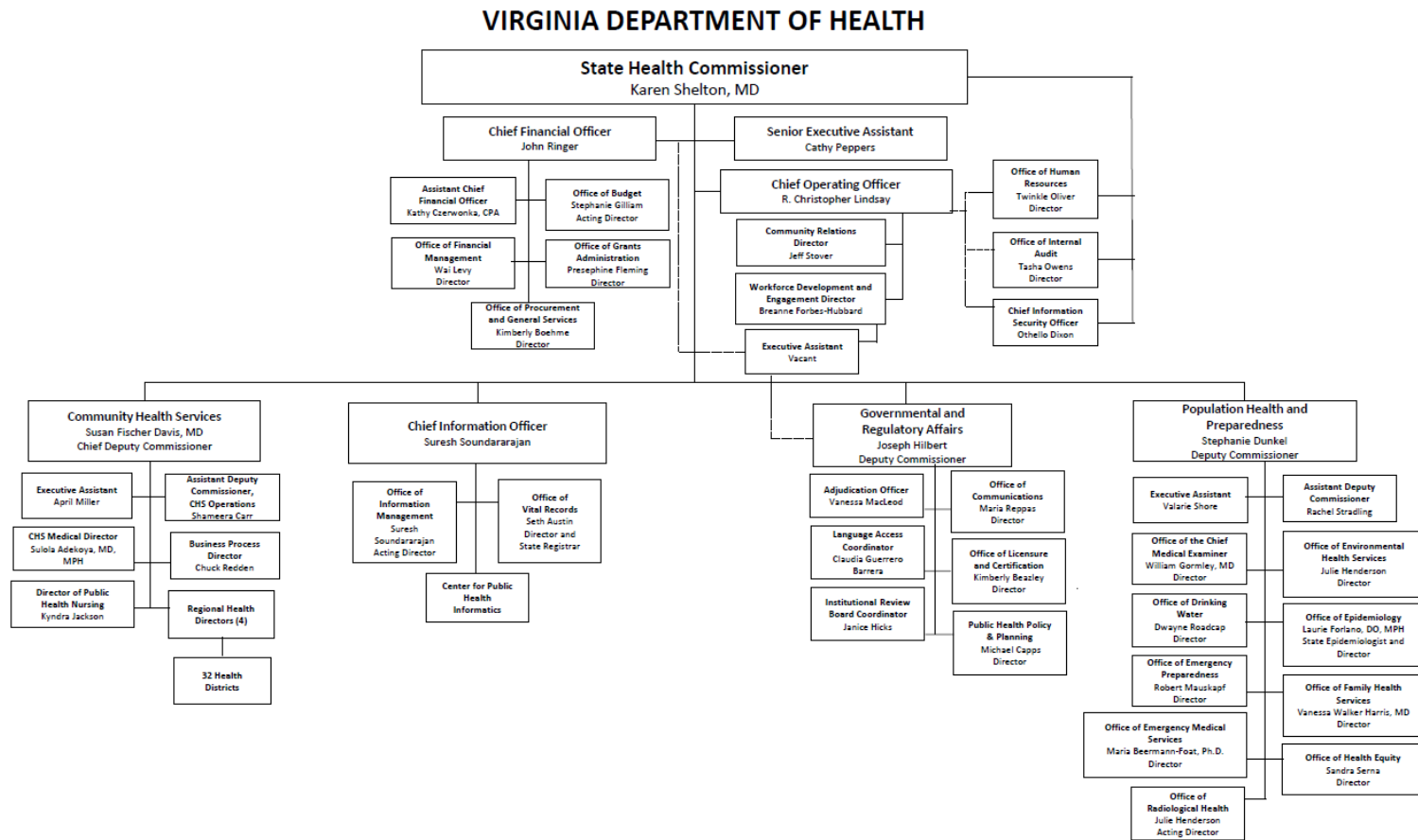
Appendix

1. Organizational Chart

2. Current Filled Employee Count (Classified and Wage) by Office/District, Role, and Working Title

August 1, 2025

Appendix 1: Organizational Chart



July 10, 2025

August 1, 2025

Appendix 2: Employee Count by Office/District, Role, and Working Title¹

¹ All positions are based on currently filled Classified and Wage positions. Vacant positions not included in counts.

Location	Designation	Position Description	Count of Positions
Alexandria Hlth District			68
Alexandria Hlth District	CLASSIFIED		64
Alexandria Hlth District	CLASSIFIED	Business Mgr A	1
Alexandria Hlth District	CLASSIFIED	BUSINESS MGR C	1
Alexandria Hlth District	CLASSIFIED	BUYER	1
Alexandria Hlth District	CLASSIFIED	CERT NURSE PRACTITIONER SR	2
Alexandria Hlth District	CLASSIFIED	DISTRICT IT ANALYST	1
Alexandria Hlth District	CLASSIFIED	Env Health Mgr	1
Alexandria Hlth District	CLASSIFIED	ENV HEALTH SPEC SR	3
Alexandria Hlth District	CLASSIFIED	ENV HEALTH TECH SPEC	1
Alexandria Hlth District	CLASSIFIED	EPIDEMIOLOGIST	2
Alexandria Hlth District	CLASSIFIED	EPIDEMIOLOGIST SR	2
Alexandria Hlth District	CLASSIFIED	EXECUTIVE SECRETARY	3
Alexandria Hlth District	CLASSIFIED	Executive Secretary Sr	1
Alexandria Hlth District	CLASSIFIED	EXECUTIVE SECRETARY SR 3A	1
Alexandria Hlth District	CLASSIFIED	Fiscal Asst	1
Alexandria Hlth District	CLASSIFIED	HEALTH COUNSELOR	1
Alexandria Hlth District	CLASSIFIED	Health District Dir	1
Alexandria Hlth District	CLASSIFIED	HEALTHCARE TECHNICIAN	1
Alexandria Hlth District	CLASSIFIED	NUTRITIONIST ASSOC	1

August 1, 2025

Alexandria Hlth District	CLASSIFIED	NUTRITIONIST ASST	2
Alexandria Hlth District	CLASSIFIED	NUTRITIONIST SUPV SR	1
Alexandria Hlth District	CLASSIFIED	OFFICE SVCS ASST	3
Alexandria Hlth District	CLASSIFIED	OFFICE SVCS SPEC	7
Alexandria Hlth District	CLASSIFIED	OFFICE SVCS SUPV	1
Alexandria Hlth District	CLASSIFIED	OFFICE SVCS SUPV SR	1
Alexandria Hlth District	CLASSIFIED	PH INFORMATICS SPEC SENIOR	1
Alexandria Hlth District	CLASSIFIED	PH NURSE	9
Alexandria Hlth District	CLASSIFIED	PH NURSE MGR SR	1
Alexandria Hlth District	CLASSIFIED	PH NURSE SR	2
Alexandria Hlth District	CLASSIFIED	PH NURSE SUPV	3
Alexandria Hlth District	CLASSIFIED	PH OUTREACH WORKER	1
Alexandria Hlth District	CLASSIFIED	PH PHYSICIAN SUPV	2
Alexandria Hlth District	CLASSIFIED	POPULATION HEALTH MANAGER	1
Alexandria Hlth District	CLASSIFIED	PROG SUP TECH	2
Alexandria Hlth District	CLASSIFIED	Public Relations Spec	1
Alexandria Hlth District	CLASSIFIED	STOREKEEPER HELPER	1
Alexandria Hlth District	WAGE		4
Alexandria Hlth District	WAGE	CERT NURSE PRACTITIONER SR	1
Alexandria Hlth District	WAGE	HEALTHCARE TECHNICIAN	1
Alexandria Hlth District	WAGE	PH OUTREACH WORKER	1
Alexandria Hlth District	WAGE	PH Physician	1
Alleghany Hlth District			48
Alleghany Hlth District	CLASSIFIED		43
Alleghany Hlth District	CLASSIFIED	EMERG SVCS PLANNER	1

August 1, 2025

Alleghany Hlth District	CLASSIFIED	Env Health Mgr	1
Alleghany Hlth District	CLASSIFIED	ENV HEALTH SPEC	1
Alleghany Hlth District	CLASSIFIED	ENV HEALTH SPEC SR	4
Alleghany Hlth District	CLASSIFIED	ENV HEALTH SUPV	1
Alleghany Hlth District	CLASSIFIED	EPIDEMIOLOGIST	1
Alleghany Hlth District	CLASSIFIED	EPIDEMIOLOGIST SR	1
Alleghany Hlth District	CLASSIFIED	Fiscal Tech	1
Alleghany Hlth District	CLASSIFIED	HUMAN SVCS PROG SPEC	1
Alleghany Hlth District	CLASSIFIED	NUTRITIONIST ASSOC	3
Alleghany Hlth District	CLASSIFIED	NUTRITIONIST ASST	1
Alleghany Hlth District	CLASSIFIED	NUTRITIONIST SR	2
Alleghany Hlth District	CLASSIFIED	OFFICE SVCS SPEC	8
Alleghany Hlth District	CLASSIFIED	OFFICE SVCS SUPV	1
Alleghany Hlth District	CLASSIFIED	OFFICE SVCS SUPV SR	3
Alleghany Hlth District	CLASSIFIED	PH NURSE	5
Alleghany Hlth District	CLASSIFIED	PH NURSE SR	3
Alleghany Hlth District	CLASSIFIED	PH NURSE SUPV	2
Alleghany Hlth District	CLASSIFIED	POPULATION HEALTH COMM COORD	1
Alleghany Hlth District	CLASSIFIED	PROG SUP TECH	2
Alleghany Hlth District	WAGE		5
Alleghany Hlth District	WAGE	BREASTFEEDING PEER COUNSELOR	1
Alleghany Hlth District	WAGE	Housekeeping Worker	2
Alleghany Hlth District	WAGE	OFFICE SVCS ASST	1
Alleghany Hlth District	WAGE	PH NURSE	1
Blue Ridge Hlth District			78

August 1, 2025

Blue Ridge Hlth District	CLASSIFIED		75
Blue Ridge Hlth District	CLASSIFIED	ACCOUNTANT	1
Blue Ridge Hlth District	CLASSIFIED	Business Mgr A	1
Blue Ridge Hlth District	CLASSIFIED	BUSINESS MGR C	1
Blue Ridge Hlth District	CLASSIFIED	BUYER	1
Blue Ridge Hlth District	CLASSIFIED	CERT NURSE PRACTITIONER SR	2
Blue Ridge Hlth District	CLASSIFIED	DISTRICT IT ANALYST SR	1
Blue Ridge Hlth District	CLASSIFIED	DISTRICT PROG DEVEL SPECIALIST	1
Blue Ridge Hlth District	CLASSIFIED	ENV HEALTH MGR SR	1
Blue Ridge Hlth District	CLASSIFIED	ENV HEALTH SPEC	3
Blue Ridge Hlth District	CLASSIFIED	ENV HEALTH SPEC SR	8
Blue Ridge Hlth District	CLASSIFIED	ENV HEALTH SUPV	2
Blue Ridge Hlth District	CLASSIFIED	ENV HEALTH TECH SPEC	1
Blue Ridge Hlth District	CLASSIFIED	EPIDEMIOLOGIST	1
Blue Ridge Hlth District	CLASSIFIED	EPIDEMIOLOGIST SR	1
Blue Ridge Hlth District	CLASSIFIED	Fiscal Tech	1
Blue Ridge Hlth District	CLASSIFIED	Fiscal Tech Sr	1
Blue Ridge Hlth District	CLASSIFIED	HEALTH COUNSELOR	1
Blue Ridge Hlth District	CLASSIFIED	Health District Dir	1
Blue Ridge Hlth District	CLASSIFIED	HEALTHCARE TECHNICIAN SENIOR	2
Blue Ridge Hlth District	CLASSIFIED	HR ANALYST	1
Blue Ridge Hlth District	CLASSIFIED	HUMAN SVCS PROG SPEC	3
Blue Ridge Hlth District	CLASSIFIED	HUMAN SVCS PROG SUPV	1
Blue Ridge Hlth District	CLASSIFIED	LOCAL HEALTH EMERG COORD	1
Blue Ridge Hlth District	CLASSIFIED	NUTRITIONIST ASSOC	5

August 1, 2025

Blue Ridge Hlth District	CLASSIFIED	NUTRITIONIST SUPV SR	1
Blue Ridge Hlth District	CLASSIFIED	OFFICE SVCS SPEC	11
Blue Ridge Hlth District	CLASSIFIED	OFFICE SVCS SUPV	6
Blue Ridge Hlth District	CLASSIFIED	OFFICE SVCS SUPV SR	1
Blue Ridge Hlth District	CLASSIFIED	PH NURSE	4
Blue Ridge Hlth District	CLASSIFIED	PH NURSE MGR SR	1
Blue Ridge Hlth District	CLASSIFIED	PH NURSE SR	4
Blue Ridge Hlth District	CLASSIFIED	PH NURSE SUPV	2
Blue Ridge Hlth District	CLASSIFIED	Prog Sup Tech Sr	2
Blue Ridge Hlth District	CLASSIFIED	Storekeeper	1
Blue Ridge Hlth District	WAGE		3
Blue Ridge Hlth District	WAGE	HUMAN RESOURCE ASST	1
Blue Ridge Hlth District	WAGE	HUMAN SVCS PROG SPEC	1
Blue Ridge Hlth District	WAGE	PH NURSE	1
Central Shenandoah Hlth District			86
Central Shenandoah Hlth District	CLASSIFIED		82
Central Shenandoah Hlth District	CLASSIFIED	Business Mgr A	1
Central Shenandoah Hlth District	CLASSIFIED	BUSINESS MGR C	1
Central Shenandoah Hlth District	CLASSIFIED	BUSINESS RESOURCE COORDINATOR	1
Central Shenandoah Hlth District	CLASSIFIED	CERT NURSE PRACTITIONER SR	2
Central Shenandoah Hlth District	CLASSIFIED	DISTRICT IT ANALYST SR	1
Central Shenandoah Hlth District	CLASSIFIED	ENV HEALTH MGR SR	1
Central Shenandoah Hlth District	CLASSIFIED	ENV HEALTH SPEC	6
Central Shenandoah Hlth District	CLASSIFIED	ENV HEALTH SPEC SR	6
Central Shenandoah Hlth District	CLASSIFIED	ENV HEALTH SUPV	1

August 1, 2025

Central Shenandoah Hlth District	CLASSIFIED	ENV HEALTH TECH SPEC	4
Central Shenandoah Hlth District	CLASSIFIED	EPIDEMIOLOGIST	2
Central Shenandoah Hlth District	CLASSIFIED	EPIDEMIOLOGIST SR	1
Central Shenandoah Hlth District	CLASSIFIED	Executive Secretary Sr	1
Central Shenandoah Hlth District	CLASSIFIED	Fiscal Tech	3
Central Shenandoah Hlth District	CLASSIFIED	Fiscal Tech Sr	1
Central Shenandoah Hlth District	CLASSIFIED	HEALTH EDUCATOR SR	1
Central Shenandoah Hlth District	CLASSIFIED	HR ANALYST	1
Central Shenandoah Hlth District	CLASSIFIED	LOCAL HEALTH EMERG COORD	1
Central Shenandoah Hlth District	CLASSIFIED	MRC COORDINATOR	1
Central Shenandoah Hlth District	CLASSIFIED	NUTRITIONIST	1
Central Shenandoah Hlth District	CLASSIFIED	NUTRITIONIST ASSOC	5
Central Shenandoah Hlth District	CLASSIFIED	NUTRITIONIST SUPV SR	1
Central Shenandoah Hlth District	CLASSIFIED	OFFICE SVCS SPEC	17
Central Shenandoah Hlth District	CLASSIFIED	OFFICE SVCS SUPV	2
Central Shenandoah Hlth District	CLASSIFIED	PH NURSE	9
Central Shenandoah Hlth District	CLASSIFIED	PH NURSE MGR SR	1
Central Shenandoah Hlth District	CLASSIFIED	PH NURSE SR	2
Central Shenandoah Hlth District	CLASSIFIED	PH NURSE SUPV	2
Central Shenandoah Hlth District	CLASSIFIED	PH OUTREACH WORKER	1
Central Shenandoah Hlth District	CLASSIFIED	POPULATION HEALTH COMM COORD	1
Central Shenandoah Hlth District	CLASSIFIED	PROG SUP TECH	3
Central Shenandoah Hlth District	CLASSIFIED	Prog Sup Tech Sr	1
Central Shenandoah Hlth District	WAGE		4
Central Shenandoah Hlth District	WAGE	BREASTFEEDING PEER COUNSELOR	3

August 1, 2025

Central Shenandoah Hlth District	WAGE	OFFICE SVCS SPEC	1
Central Virginia Hlth District			93
Central Virginia Hlth District	CLASSIFIED		88
Central Virginia Hlth District	CLASSIFIED	Business Mgr A	1
Central Virginia Hlth District	CLASSIFIED	BUSINESS MGR C	1
Central Virginia Hlth District	CLASSIFIED	CERT NURSE PRACTITIONER SR	1
Central Virginia Hlth District	CLASSIFIED	COMMUNITY HEALTH WORKER	1
Central Virginia Hlth District	CLASSIFIED	ENV HEALTH ASSOC	1
Central Virginia Hlth District	CLASSIFIED	ENV HEALTH MGR SR	1
Central Virginia Hlth District	CLASSIFIED	ENV HEALTH SPEC	6
Central Virginia Hlth District	CLASSIFIED	ENV HEALTH SPEC SR	5
Central Virginia Hlth District	CLASSIFIED	ENV HEALTH SUPV	3
Central Virginia Hlth District	CLASSIFIED	ENV HEALTH TECH SPEC	3
Central Virginia Hlth District	CLASSIFIED	EPIDEMIOLOGIST	1
Central Virginia Hlth District	CLASSIFIED	EPIDEMIOLOGIST SR	1
Central Virginia Hlth District	CLASSIFIED	Executive Secretary Sr	1
Central Virginia Hlth District	CLASSIFIED	FAMILY SUPPORT WORKER	7
Central Virginia Hlth District	CLASSIFIED	Fiscal Tech	2
Central Virginia Hlth District	CLASSIFIED	Health District Dir	1
Central Virginia Hlth District	CLASSIFIED	HEALTH EDUCATOR	2
Central Virginia Hlth District	CLASSIFIED	HEALTH EDUCATOR SR	1
Central Virginia Hlth District	CLASSIFIED	Housekeeping Worker	1
Central Virginia Hlth District	CLASSIFIED	HR ANALYST	1
Central Virginia Hlth District	CLASSIFIED	HUMAN SVCS PROG SPEC	1
Central Virginia Hlth District	CLASSIFIED	HUMAN SVCS PROG SUPV	1

August 1, 2025

Central Virginia Hlth District	CLASSIFIED	LOCAL HEALTH EMERG COORD	1
Central Virginia Hlth District	CLASSIFIED	NUTRITIONIST	1
Central Virginia Hlth District	CLASSIFIED	NUTRITIONIST ASSOC	5
Central Virginia Hlth District	CLASSIFIED	NUTRITIONIST ASST	1
Central Virginia Hlth District	CLASSIFIED	NUTRITIONIST SR	1
Central Virginia Hlth District	CLASSIFIED	OFFICE SVCS SPEC	16
Central Virginia Hlth District	CLASSIFIED	Office Svcs Spec-DS	1
Central Virginia Hlth District	CLASSIFIED	OFFICE SVCS SUPV	2
Central Virginia Hlth District	CLASSIFIED	OFFICE SVCS SUPV SR	2
Central Virginia Hlth District	CLASSIFIED	PH NURSE	2
Central Virginia Hlth District	CLASSIFIED	PH NURSE MGR SR	1
Central Virginia Hlth District	CLASSIFIED	PH NURSE SR	2
Central Virginia Hlth District	CLASSIFIED	PH NURSE SUPV	1
Central Virginia Hlth District	CLASSIFIED	POPULATION HEALTH COMM COORD	1
Central Virginia Hlth District	CLASSIFIED	POPULATION HEALTH MANAGER	1
Central Virginia Hlth District	CLASSIFIED	PROG SUP TECH	5
Central Virginia Hlth District	CLASSIFIED	Prog Sup Tech Sr	1
Central Virginia Hlth District	CLASSIFIED	Social Worker	1
Central Virginia Hlth District	WAGE		5
Central Virginia Hlth District	WAGE	BREASTFEEDING PEER COUNSELOR	2
Central Virginia Hlth District	WAGE	Housekeeping Worker	3
Chesapeake Hlth District			66
Chesapeake Hlth District	CLASSIFIED		64
Chesapeake Hlth District	CLASSIFIED	ACCOUNTANT	1
Chesapeake Hlth District	CLASSIFIED	Business Mgr A	1

August 1, 2025

Chesapeake Hlth District	CLASSIFIED	BUSINESS MGR C	1
Chesapeake Hlth District	CLASSIFIED	DISTRICT IT ANALYST SR	1
Chesapeake Hlth District	CLASSIFIED	ENV HEALTH ASSOC	1
Chesapeake Hlth District	CLASSIFIED	ENV HEALTH MGR SR	1
Chesapeake Hlth District	CLASSIFIED	ENV HEALTH SPEC	1
Chesapeake Hlth District	CLASSIFIED	ENV HEALTH SPEC SR	6
Chesapeake Hlth District	CLASSIFIED	ENV HEALTH SUPV	2
Chesapeake Hlth District	CLASSIFIED	ENV HEALTH TECH SPEC	2
Chesapeake Hlth District	CLASSIFIED	EPIDEMIOLOGIST	2
Chesapeake Hlth District	CLASSIFIED	EPIDEMIOLOGIST LEAD	1
Chesapeake Hlth District	CLASSIFIED	EXECUTIVE SECRETARY	2
Chesapeake Hlth District	CLASSIFIED	Executive Secretary Sr	1
Chesapeake Hlth District	CLASSIFIED	Fiscal Tech	1
Chesapeake Hlth District	CLASSIFIED	Fiscal Tech Sr	1
Chesapeake Hlth District	CLASSIFIED	HEALTH COUNSELOR	1
Chesapeake Hlth District	CLASSIFIED	Health District Dir	1
Chesapeake Hlth District	CLASSIFIED	HR ANALYST	1
Chesapeake Hlth District	CLASSIFIED	HUMAN SVCS PROG SPEC	1
Chesapeake Hlth District	CLASSIFIED	LOCAL HEALTH EMERG COORD	1
Chesapeake Hlth District	CLASSIFIED	NUTRITIONIST ASSOC	3
Chesapeake Hlth District	CLASSIFIED	NUTRITIONIST ASST	2
Chesapeake Hlth District	CLASSIFIED	NUTRITIONIST SR	2
Chesapeake Hlth District	CLASSIFIED	NUTRITIONIST SUPV SR	1
Chesapeake Hlth District	CLASSIFIED	OFFICE SVCS SPEC	3
Chesapeake Hlth District	CLASSIFIED	OFFICE SVCS SUPV	2

August 1, 2025

Chesapeake Hlth District	CLASSIFIED	PH NURSE	4
Chesapeake Hlth District	CLASSIFIED	PH NURSE MGR SR	1
Chesapeake Hlth District	CLASSIFIED	PH NURSE SR	5
Chesapeake Hlth District	CLASSIFIED	PH NURSE SUPV	2
Chesapeake Hlth District	CLASSIFIED	PH OUTREACH WORKER	1
Chesapeake Hlth District	CLASSIFIED	PH OUTREACH WORKER 2C	1
Chesapeake Hlth District	CLASSIFIED	PRACTICAL NURSE A	1
Chesapeake Hlth District	CLASSIFIED	PROG SUP TECH	3
Chesapeake Hlth District	CLASSIFIED	Prog Sup Tech Sr	1
Chesapeake Hlth District	CLASSIFIED	PUBLIC RELATIONS COORD	1
Chesapeake Hlth District	CLASSIFIED	SECRETARY SR	1
Chesapeake Hlth District	WAGE		2
Chesapeake Hlth District	WAGE	Med Technologist	1
Chesapeake Hlth District	WAGE	NUTRITIONIST	1
Chesapeake Hlth District			86
Chesapeake Hlth District	CLASSIFIED		79
Chesapeake Hlth District	CLASSIFIED	Business Mgr A	1
Chesapeake Hlth District	CLASSIFIED	BUSINESS MGR C	1
Chesapeake Hlth District	CLASSIFIED	CERT NURSE PRACTITIONER SR	1
Chesapeake Hlth District	CLASSIFIED	ENV HEALTH ASSOC	2
Chesapeake Hlth District	CLASSIFIED	ENV HEALTH SPEC	1
Chesapeake Hlth District	CLASSIFIED	ENV HEALTH SPEC SR	5
Chesapeake Hlth District	CLASSIFIED	ENV HEALTH SUPV	2
Chesapeake Hlth District	CLASSIFIED	ENV HEALTH TECH SPEC	3
Chesapeake Hlth District	CLASSIFIED	EPIDEMIOLOGIST	1

August 1, 2025

Chesterfield Hlth District	CLASSIFIED	EPIDEMIOLOGIST SR	1
Chesterfield Hlth District	CLASSIFIED	Executive Secretary Sr	1
Chesterfield Hlth District	CLASSIFIED	Fiscal Tech	1
Chesterfield Hlth District	CLASSIFIED	Health District Dir	1
Chesterfield Hlth District	CLASSIFIED	HEALTH EDUCATOR	1
Chesterfield Hlth District	CLASSIFIED	HEALTH EDUCATOR SR	1
Chesterfield Hlth District	CLASSIFIED	HEALTHCARE TECHNICIAN SENIOR	1
Chesterfield Hlth District	CLASSIFIED	HR ANALYST	1
Chesterfield Hlth District	CLASSIFIED	LOCAL HEALTH EMERG COORD	1
Chesterfield Hlth District	CLASSIFIED	MATERIAL MANAGEMENT TECH	1
Chesterfield Hlth District	CLASSIFIED	NUTRITIONIST	2
Chesterfield Hlth District	CLASSIFIED	NUTRITIONIST ASSOC	5
Chesterfield Hlth District	CLASSIFIED	NUTRITIONIST SR	2
Chesterfield Hlth District	CLASSIFIED	NUTRITIONIST SUPV SR	1
Chesterfield Hlth District	CLASSIFIED	OFFICE SVCS SPEC	3
Chesterfield Hlth District	CLASSIFIED	Office Svcs Spec-DS	1
Chesterfield Hlth District	CLASSIFIED	OFFICE SVCS SUPV SR	2
Chesterfield Hlth District	CLASSIFIED	PH NURSE	5
Chesterfield Hlth District	CLASSIFIED	PH NURSE MGR SR	1
Chesterfield Hlth District	CLASSIFIED	PH NURSE SR	8
Chesterfield Hlth District	CLASSIFIED	PH NURSE SUPV	3
Chesterfield Hlth District	CLASSIFIED	PH OUTREACH WORKER	1
Chesterfield Hlth District	CLASSIFIED	PHARMACY ASST A	1
Chesterfield Hlth District	CLASSIFIED	POPULATION HEALTH COMM COORD	1
Chesterfield Hlth District	CLASSIFIED	POPULATION HEALTH MANAGER	1

August 1, 2025

Chesterfield Hlth District	CLASSIFIED	PRACTICAL NURSE A	2
Chesterfield Hlth District	CLASSIFIED	PROG SUP TECH	11
Chesterfield Hlth District	CLASSIFIED	Prog Sup Tech Sr	1
Chesterfield Hlth District	CLASSIFIED	Public Relations Spec	1
Chesterfield Hlth District	WAGE		7
Chesterfield Hlth District	WAGE	BREASTFEEDING PEER COUNSELOR	2
Chesterfield Hlth District	WAGE	CERT NURSE PRACTITIONER SR	2
Chesterfield Hlth District	WAGE	HR DP User Liaison	1
Chesterfield Hlth District	WAGE	MRC COORDINATOR	1
Chesterfield Hlth District	WAGE	PH OUTREACH WORKER	1
Chickahominy Hlth District			45
Chickahominy Hlth District	CLASSIFIED		41
Chickahominy Hlth District	CLASSIFIED	BUSINESS MGR C	1
Chickahominy Hlth District	CLASSIFIED	CERT NURSE PRACTITIONER SR	1
Chickahominy Hlth District	CLASSIFIED	ENV HEALTH MGR SR	1
Chickahominy Hlth District	CLASSIFIED	ENV HEALTH SPEC SR	7
Chickahominy Hlth District	CLASSIFIED	ENV HEALTH SUPV	2
Chickahominy Hlth District	CLASSIFIED	ENV HEALTH TECH SPEC	2
Chickahominy Hlth District	CLASSIFIED	EPIDEMIOLOGIST	1
Chickahominy Hlth District	CLASSIFIED	EPIDEMIOLOGIST SR	1
Chickahominy Hlth District	CLASSIFIED	Fiscal Tech	1
Chickahominy Hlth District	CLASSIFIED	Fiscal Tech Sr	2
Chickahominy Hlth District	CLASSIFIED	Health District Dir	1
Chickahominy Hlth District	CLASSIFIED	HR ANALYST	1
Chickahominy Hlth District	CLASSIFIED	LOCAL HEALTH EMERG COORD	1

August 1, 2025

Chickahominy Hlth District	CLASSIFIED	NUTRITIONIST	1
Chickahominy Hlth District	CLASSIFIED	NUTRITIONIST ASSOC	1
Chickahominy Hlth District	CLASSIFIED	NUTRITIONIST SUPV SR	1
Chickahominy Hlth District	CLASSIFIED	OFFICE SVCS SPEC	4
Chickahominy Hlth District	CLASSIFIED	OFFICE SVCS SUPV SR	1
Chickahominy Hlth District	CLASSIFIED	PH NURSE	1
Chickahominy Hlth District	CLASSIFIED	PH NURSE SR	4
Chickahominy Hlth District	CLASSIFIED	PH NURSE SUPV	1
Chickahominy Hlth District	CLASSIFIED	POPHEALTH PLANNG&IMPRV COORD	1
Chickahominy Hlth District	CLASSIFIED	POPULATION HEALTH COMM COORD	1
Chickahominy Hlth District	CLASSIFIED	POPULATION HEALTH MANAGER	1
Chickahominy Hlth District	CLASSIFIED	PROG SUP TECH	2
Chickahominy Hlth District	WAGE		4
Chickahominy Hlth District	WAGE	BREASTFEEDING PEER COUNSELOR	1
Chickahominy Hlth District	WAGE	ENV HEALTH ASSOC	1
Chickahominy Hlth District	WAGE	OFFICE SVCS SPEC	2
Community Health Services			20
Community Health Services	CLASSIFIED		17
Community Health Services	CLASSIFIED	ACCOUNTANT SR	1
Community Health Services	CLASSIFIED	CHS BUSINESS PROCESS PARTNER	1
Community Health Services	CLASSIFIED	CHS MEDICAL OFFICER	3
Community Health Services	CLASSIFIED	DIR PRCS & EVAL OVERSIGHT CHS	1
Community Health Services	CLASSIFIED	DIRECTOR BUSINESS PROCESS-CHS	1
Community Health Services	CLASSIFIED	ELIGIBILITY & ACCTS REC SPEC	1

August 1, 2025

Community Health Services	CLASSIFIED	HEALTHCARE REIMB MGR SR	1
Community Health Services	CLASSIFIED	MEDICAL DIRECTOR-CHS	1
Community Health Services	CLASSIFIED	PH NURSE CLINICAL PROG MGR	1
Community Health Services	CLASSIFIED	PH NURSE DIR	1
Community Health Services	CLASSIFIED	PRE-ADMIN SCREENG PROG MGR	1
Community Health Services	CLASSIFIED	REGIONAL HR BUSINESS PARTNER	4
Community Health Services	WAGE		3
Community Health Services	WAGE	CHS MEDICAL OFFICER	1
Community Health Services	WAGE	EXECUTIVE ADVISOR	
Crater Hlth District			59
Crater Hlth District	CLASSIFIED		56
Crater Hlth District	CLASSIFIED	ACCOUNTANT	1
Crater Hlth District	CLASSIFIED	BUSINESS MGR C	1
Crater Hlth District	CLASSIFIED	BUYER	1
Crater Hlth District	CLASSIFIED	CERT NURSE PRACTITIONER SR	2
Crater Hlth District	CLASSIFIED	ENV HEALTH MGR SR	1
Crater Hlth District	CLASSIFIED	ENV HEALTH SPEC	3
Crater Hlth District	CLASSIFIED	ENV HEALTH SPEC SR	1
Crater Hlth District	CLASSIFIED	ENV HEALTH SUPV	1
Crater Hlth District	CLASSIFIED	ENV HEALTH TECH SPEC	1
Crater Hlth District	CLASSIFIED	EPIDEMIOLOGIST	1
Crater Hlth District	CLASSIFIED	EPIDEMIOLOGIST SR	1
Crater Hlth District	CLASSIFIED	Executive Secretary Sr	1
Crater Hlth District	CLASSIFIED	Fiscal Tech Sr	3
Crater Hlth District	CLASSIFIED	Health District Dir	1

August 1, 2025

Crater Hlth District	CLASSIFIED	HEALTH EDUCATOR	2
Crater Hlth District	CLASSIFIED	HEALTH EDUCATOR SR	1
Crater Hlth District	CLASSIFIED	HEALTHCARE TECHNICIAN SENIOR	1
Crater Hlth District	CLASSIFIED	HR ANALYST	1
Crater Hlth District	CLASSIFIED	LOCAL HEALTH EMERG COORD	1
Crater Hlth District	CLASSIFIED	MRC COORDINATOR	1
Crater Hlth District	CLASSIFIED	NUTRITIONIST	2
Crater Hlth District	CLASSIFIED	NUTRITIONIST ASSOC	5
Crater Hlth District	CLASSIFIED	NUTRITIONIST ASST	1
Crater Hlth District	CLASSIFIED	NUTRITIONIST SUPV SR	1
Crater Hlth District	CLASSIFIED	OFFICE SVCS SPEC	10
Crater Hlth District	CLASSIFIED	OFFICE SVCS SUPV SR	2
Crater Hlth District	CLASSIFIED	PH NURSE	1
Crater Hlth District	CLASSIFIED	PH NURSE MGR SR	1
Crater Hlth District	CLASSIFIED	PH NURSE SR	4
Crater Hlth District	CLASSIFIED	POPULATION HEALTH COMM COORD	1
Crater Hlth District	CLASSIFIED	PROG SUP TECH	1
Crater Hlth District	CLASSIFIED	Storekeeper	1
Crater Hlth District	WAGE		3
Crater Hlth District	WAGE	BREASTFEEDING PEER COUNSELOR	1
Crater Hlth District	WAGE	Housekeeping Worker	1
Crater Hlth District	WAGE	MED PROG DIR	1
Cumberland Plateau Hlth District			59
Cumberland Plateau Hlth District	CLASSIFIED		57
Cumberland Plateau Hlth District	CLASSIFIED	ACCOUNTANT SR	1

August 1, 2025

Cumberland Plateau Hlth District	CLASSIFIED	Business Mgr A	2
Cumberland Plateau Hlth District	CLASSIFIED	CERT NURSE PRACTITIONER SR	1
Cumberland Plateau Hlth District	CLASSIFIED	COMMUNITY HEALTH WORKER	2
Cumberland Plateau Hlth District	CLASSIFIED	ENV HEALTH MGR SR	1
Cumberland Plateau Hlth District	CLASSIFIED	ENV HEALTH SPEC	2
Cumberland Plateau Hlth District	CLASSIFIED	ENV HEALTH SPEC SR	4
Cumberland Plateau Hlth District	CLASSIFIED	ENV HEALTH TECH SPEC	1
Cumberland Plateau Hlth District	CLASSIFIED	EPIDEMIOLOGIST	1
Cumberland Plateau Hlth District	CLASSIFIED	EPIDEMIOLOGIST SR	1
Cumberland Plateau Hlth District	CLASSIFIED	Executive Secretary Sr	1
Cumberland Plateau Hlth District	CLASSIFIED	Fiscal Tech Sr	1
Cumberland Plateau Hlth District	CLASSIFIED	HEALTH EDUCATOR	3
Cumberland Plateau Hlth District	CLASSIFIED	LOCAL HEALTH EMERG COORD	1
Cumberland Plateau Hlth District	CLASSIFIED	NUTRITIONIST	1
Cumberland Plateau Hlth District	CLASSIFIED	NUTRITIONIST ASSOC	5
Cumberland Plateau Hlth District	CLASSIFIED	NUTRITIONIST SUPV SR	1
Cumberland Plateau Hlth District	CLASSIFIED	OFFICE SVCS SPEC	10
Cumberland Plateau Hlth District	CLASSIFIED	PH NURSE	6
Cumberland Plateau Hlth District	CLASSIFIED	PH NURSE SR	4
Cumberland Plateau Hlth District	CLASSIFIED	PH NURSE SUPV	2
Cumberland Plateau Hlth District	CLASSIFIED	PH OUTREACH WORKER	2
Cumberland Plateau Hlth District	CLASSIFIED	PRACTICAL NURSE A	4
Cumberland Plateau Hlth District	WAGE		2
Cumberland Plateau Hlth District	WAGE	BREASTFEEDING PEER COUNSELOR	2
Eastern Shore Hlth District			60

August 1, 2025

Eastern Shore Hlth District	CLASSIFIED		55
Eastern Shore Hlth District	CLASSIFIED	ACCOUNTANT SR	1
Eastern Shore Hlth District	CLASSIFIED	BUSINESS MGR C	1
Eastern Shore Hlth District	CLASSIFIED	BUYER	1
Eastern Shore Hlth District	CLASSIFIED	CERT NURSE PRACTITIONER SR	1
Eastern Shore Hlth District	CLASSIFIED	COMMUNITY HEALTH WORKER	2
Eastern Shore Hlth District	CLASSIFIED	ENV HEALTH SPEC	4
Eastern Shore Hlth District	CLASSIFIED	ENV HEALTH SPEC SR	4
Eastern Shore Hlth District	CLASSIFIED	ENV HEALTH SUPV	2
Eastern Shore Hlth District	CLASSIFIED	ENV HEALTH TECH SPEC	1
Eastern Shore Hlth District	CLASSIFIED	EPIDEMIOLOGIST	1
Eastern Shore Hlth District	CLASSIFIED	EPIDEMIOLOGIST SR	1
Eastern Shore Hlth District	CLASSIFIED	Health District Dir	1
Eastern Shore Hlth District	CLASSIFIED	HEALTH EDUCATOR	1
Eastern Shore Hlth District	CLASSIFIED	HEALTHCARE TECHNICIAN	1
Eastern Shore Hlth District	CLASSIFIED	HR ANALYST	1
Eastern Shore Hlth District	CLASSIFIED	LOCAL HEALTH EMERGENCY SUPV	1
Eastern Shore Hlth District	CLASSIFIED	MRC COORDINATOR	1
Eastern Shore Hlth District	CLASSIFIED	NUTRITIONIST	1
Eastern Shore Hlth District	CLASSIFIED	NUTRITIONIST ASSOC	1
Eastern Shore Hlth District	CLASSIFIED	NUTRITIONIST ASST	1
Eastern Shore Hlth District	CLASSIFIED	NUTRITIONIST SUPV SR	1
Eastern Shore Hlth District	CLASSIFIED	OFFICE SVCS SPEC	8
Eastern Shore Hlth District	CLASSIFIED	OFFICE SVCS SUPV SR	1
Eastern Shore Hlth District	CLASSIFIED	PH NURSE	4

August 1, 2025

Eastern Shore Hlth District	CLASSIFIED	PH NURSE MGR SR	1
Eastern Shore Hlth District	CLASSIFIED	PH NURSE SR	4
Eastern Shore Hlth District	CLASSIFIED	PH NURSE SUPV	2
Eastern Shore Hlth District	CLASSIFIED	PH OUTREACH WORKER	2
Eastern Shore Hlth District	CLASSIFIED	POPULATION HEALTH COMM COORD	1
Eastern Shore Hlth District	CLASSIFIED	POPULATION HEALTH MANAGER	1
Eastern Shore Hlth District	CLASSIFIED	PROG SUP TECH	1
Eastern Shore Hlth District	CLASSIFIED	Prog Sup Tech Sr	1
Eastern Shore Hlth District	WAGE		5
Eastern Shore Hlth District	WAGE	BREASTFEEDING PEER COUNSELOR	1
Eastern Shore Hlth District	WAGE	ENV HEALTH ASST	1
Eastern Shore Hlth District	WAGE	Housekeeping Worker	3
Hampton Hlth District			35
Hampton Hlth District	CLASSIFIED		34
Hampton Hlth District	CLASSIFIED	CERT NURSE PRACTITIONER SR	1
Hampton Hlth District	CLASSIFIED	ENV HEALTH SPEC	2
Hampton Hlth District	CLASSIFIED	ENV HEALTH SUPV	1
Hampton Hlth District	CLASSIFIED	EPIDEMIOLOGIST	1
Hampton Hlth District	CLASSIFIED	EPIDEMIOLOGIST SR	1
Hampton Hlth District	CLASSIFIED	Executive Secretary Sr	1
Hampton Hlth District	CLASSIFIED	Fiscal Tech	3
Hampton Hlth District	CLASSIFIED	Fiscal Tech Sr	1
Hampton Hlth District	CLASSIFIED	HEALTH EDUCATOR	1
Hampton Hlth District	CLASSIFIED	HEALTHCARE TECHNICIAN	1
Hampton Hlth District	CLASSIFIED	HR ANALYST	1

August 1, 2025

Hampton Hlth District	CLASSIFIED	HUMAN SVCS PROG SPEC	1
Hampton Hlth District	CLASSIFIED	NUTRITIONIST	1
Hampton Hlth District	CLASSIFIED	NUTRITIONIST ASSOC	1
Hampton Hlth District	CLASSIFIED	NUTRITIONIST ASST	2
Hampton Hlth District	CLASSIFIED	NUTRITIONIST SUPV SR	1
Hampton Hlth District	CLASSIFIED	OFFICE SVCS SPEC	1
Hampton Hlth District	CLASSIFIED	OFFICE SVCS SUPV	1
Hampton Hlth District	CLASSIFIED	PH NURSE	4
Hampton Hlth District	CLASSIFIED	PH NURSE SR	2
Hampton Hlth District	CLASSIFIED	PH NURSE SUPV	2
Hampton Hlth District	CLASSIFIED	PROG SUP TECH	3
Hampton Hlth District	CLASSIFIED	Storekeeper Sr	1
Hampton Hlth District	WAGE		1
Hampton Hlth District	WAGE	BREASTFEEDING PEER COUNSELOR	1
Henrico Hlth District			76
Henrico Hlth District	CLASSIFIED		71
Henrico Hlth District	CLASSIFIED	Business Mgr A	1
Henrico Hlth District	CLASSIFIED	BUSINESS MGR C	1
Henrico Hlth District	CLASSIFIED	BUYER	1
Henrico Hlth District	CLASSIFIED	CERT NURSE PRACTITIONER SR	2
Henrico Hlth District	CLASSIFIED	CHIEF OPERATIONS OFFICER	1
Henrico Hlth District	CLASSIFIED	DISTRICT IT ANALYST SR	1
Henrico Hlth District	CLASSIFIED	ENV HEALTH MGR SR	1
Henrico Hlth District	CLASSIFIED	ENV HEALTH SPEC	4
Henrico Hlth District	CLASSIFIED	ENV HEALTH SPEC SR	2

August 1, 2025

Henrico Hlth District	CLASSIFIED	ENV HEALTH SUPV	2
Henrico Hlth District	CLASSIFIED	ENV HEALTH TECH SPEC	2
Henrico Hlth District	CLASSIFIED	EPIDEMIOLOGIST	1
Henrico Hlth District	CLASSIFIED	EPIDEMIOLOGIST LEAD	1
Henrico Hlth District	CLASSIFIED	EPIDEMIOLOGIST SR	1
Henrico Hlth District	CLASSIFIED	Fiscal Tech Sr	1
Henrico Hlth District	CLASSIFIED	HEALTH EDUCATOR	1
Henrico Hlth District	CLASSIFIED	HEALTH EDUCATOR SR	1
Henrico Hlth District	CLASSIFIED	HEALTHCARE TECHNICIAN SENIOR	2
Henrico Hlth District	CLASSIFIED	HR ANALYST	1
Henrico Hlth District	CLASSIFIED	HUMAN SVCS PROG CONSULT	1
Henrico Hlth District	CLASSIFIED	HUMAN SVCS PROG COORD	1
Henrico Hlth District	CLASSIFIED	HUMAN SVCS PROG SPEC	2
Henrico Hlth District	CLASSIFIED	MRC COORDINATOR	1
Henrico Hlth District	CLASSIFIED	NUTRITIONIST	2
Henrico Hlth District	CLASSIFIED	NUTRITIONIST ASSOC	3
Henrico Hlth District	CLASSIFIED	NUTRITIONIST ASST	1
Henrico Hlth District	CLASSIFIED	NUTRITIONIST SR	1
Henrico Hlth District	CLASSIFIED	NUTRITIONIST SUPV SR	1
Henrico Hlth District	CLASSIFIED	OFFICE SVCS SPEC	6
Henrico Hlth District	CLASSIFIED	OFFICE SVCS SUPV	1
Henrico Hlth District	CLASSIFIED	PH NURSE	7
Henrico Hlth District	CLASSIFIED	PH NURSE MGR SR	1
Henrico Hlth District	CLASSIFIED	PH NURSE SR	7
Henrico Hlth District	CLASSIFIED	PH NURSE SUPV	2

August 1, 2025

Henrico Hlth District	CLASSIFIED	PH OUTREACH WORKER	2
Henrico Hlth District	CLASSIFIED	POPULATION HEALTH MANAGER	1
Henrico Hlth District	CLASSIFIED	PROG SUP TECH	2
Henrico Hlth District	CLASSIFIED	Prog Sup Tech Sr	2
Henrico Hlth District	WAGE		5
Henrico Hlth District	WAGE	BREASTFEEDING PEER COUNSELOR	1
Henrico Hlth District	WAGE	CERT NURSE PRACTITIONER SR	2
Henrico Hlth District	WAGE	PH NURSE	1
Henrico Hlth District	WAGE	PH PHYSICIAN SUPV	1
Lenowisco Hlth District			63
Lenowisco Hlth District	CLASSIFIED		61
Lenowisco Hlth District	CLASSIFIED	ACCOUNTANT SR	2
Lenowisco Hlth District	CLASSIFIED	Business Mgr A	2
Lenowisco Hlth District	CLASSIFIED	BUSINESS MGR C	1
Lenowisco Hlth District	CLASSIFIED	CERT NURSE PRACTITIONER	2
Lenowisco Hlth District	CLASSIFIED	CERT NURSE PRACTITIONER SR	2
Lenowisco Hlth District	CLASSIFIED	COMMUNITY HEALTH WORKER	1
Lenowisco Hlth District	CLASSIFIED	DENTAL ASST	1
Lenowisco Hlth District	CLASSIFIED	DENTAL HYGIENIST	1
Lenowisco Hlth District	CLASSIFIED	ENV HEALTH MGR SR	1
Lenowisco Hlth District	CLASSIFIED	ENV HEALTH SPEC	2
Lenowisco Hlth District	CLASSIFIED	ENV HEALTH SPEC SR	2
Lenowisco Hlth District	CLASSIFIED	ENV HEALTH TECH SPEC	1
Lenowisco Hlth District	CLASSIFIED	EPIDEMIOLOGIST	1
Lenowisco Hlth District	CLASSIFIED	EPIDEMIOLOGIST SR	1

August 1, 2025

Lenowisco Hlth District	CLASSIFIED	HEALTH COUNSELOR	2
Lenowisco Hlth District	CLASSIFIED	Health District Dir	1
Lenowisco Hlth District	CLASSIFIED	HEALTH EDUCATOR	4
Lenowisco Hlth District	CLASSIFIED	HEALTH EDUCATOR SR	1
Lenowisco Hlth District	CLASSIFIED	HR ANALYST	1
Lenowisco Hlth District	CLASSIFIED	LOCAL HEALTH EMERG COORD	1
Lenowisco Hlth District	CLASSIFIED	NUTRITIONIST ASSOC	4
Lenowisco Hlth District	CLASSIFIED	NUTRITIONIST ASST	1
Lenowisco Hlth District	CLASSIFIED	OFFICE SVCS SPEC	9
Lenowisco Hlth District	CLASSIFIED	PH NURSE	5
Lenowisco Hlth District	CLASSIFIED	PH NURSE MGR SR	1
Lenowisco Hlth District	CLASSIFIED	PH NURSE SR	5
Lenowisco Hlth District	CLASSIFIED	PH OUTREACH WORKER	1
Lenowisco Hlth District	CLASSIFIED	POPULATION HEALTH COMM COORD	1
Lenowisco Hlth District	CLASSIFIED	PRACTICAL NURSE A	3
Lenowisco Hlth District	CLASSIFIED	PSYCHOLOGIST SR	1
Lenowisco Hlth District	WAGE		2
Lenowisco Hlth District	WAGE	BREASTFEEDING PEER COUNSELOR	2
Lord Fairfax Hlth District			70
Lord Fairfax Hlth District	CLASSIFIED		68
Lord Fairfax Hlth District	CLASSIFIED	BUSINESS MGR C	1
Lord Fairfax Hlth District	CLASSIFIED	CERT NURSE PRACTITIONER SR	2
Lord Fairfax Hlth District	CLASSIFIED	DISTRICT IT ANALYST	1
Lord Fairfax Hlth District	CLASSIFIED	ENV HEALTH MGR SR	1
Lord Fairfax Hlth District	CLASSIFIED	ENV HEALTH SPEC	8

August 1, 2025

Lord Fairfax Hlth District	CLASSIFIED	ENV HEALTH SPEC SR	7
Lord Fairfax Hlth District	CLASSIFIED	ENV HEALTH SUPV	2
Lord Fairfax Hlth District	CLASSIFIED	ENV HEALTH TECH SPEC	3
Lord Fairfax Hlth District	CLASSIFIED	EPIDEMIOLOGIST	1
Lord Fairfax Hlth District	CLASSIFIED	EPIDEMIOLOGIST SR	1
Lord Fairfax Hlth District	CLASSIFIED	Fiscal Tech	2
Lord Fairfax Hlth District	CLASSIFIED	HEALTH COUNSELOR	1
Lord Fairfax Hlth District	CLASSIFIED	Health District Dir	1
Lord Fairfax Hlth District	CLASSIFIED	HR ANALYST	1
Lord Fairfax Hlth District	CLASSIFIED	LOCAL HEALTH EMERG COORD	1
Lord Fairfax Hlth District	CLASSIFIED	NUTRITIONIST	1
Lord Fairfax Hlth District	CLASSIFIED	NUTRITIONIST ASSOC	2
Lord Fairfax Hlth District	CLASSIFIED	NUTRITIONIST SUPV SR	1
Lord Fairfax Hlth District	CLASSIFIED	OFFICE SVCS SPEC	13
Lord Fairfax Hlth District	CLASSIFIED	OFFICE SVCS SUPV SR	2
Lord Fairfax Hlth District	CLASSIFIED	PH NURSE	8
Lord Fairfax Hlth District	CLASSIFIED	PH NURSE MGR SR	1
Lord Fairfax Hlth District	CLASSIFIED	PH NURSE SR	3
Lord Fairfax Hlth District	CLASSIFIED	PH NURSE SUPV	2
Lord Fairfax Hlth District	CLASSIFIED	POPULATION HEALTH MANAGER	1
Lord Fairfax Hlth District	CLASSIFIED	PROG SUP TECH	1
Lord Fairfax Hlth District	WAGE		2
Lord Fairfax Hlth District	WAGE	BREASTFEEDING PEER COUNSELOR	2
Mt Rogers Hlth District			111
Mt Rogers Hlth District	CLASSIFIED		109

August 1, 2025

Mt Rogers Hlth District	CLASSIFIED	ACCOUNTANT SR	1
Mt Rogers Hlth District	CLASSIFIED	BUSINESS MGR C	1
Mt Rogers Hlth District	CLASSIFIED	BUSINESS RESOURCE COORDINATOR	1
Mt Rogers Hlth District	CLASSIFIED	CERT NURSE PRACTITIONER	1
Mt Rogers Hlth District	CLASSIFIED	CERT NURSE PRACTITIONER SR	2
Mt Rogers Hlth District	CLASSIFIED	COMMUNITY HEALTH WORKER	2
Mt Rogers Hlth District	CLASSIFIED	ENV HEALTH ASSOC	2
Mt Rogers Hlth District	CLASSIFIED	ENV HEALTH MGR SR	1
Mt Rogers Hlth District	CLASSIFIED	ENV HEALTH SPEC	2
Mt Rogers Hlth District	CLASSIFIED	ENV HEALTH SPEC SR	8
Mt Rogers Hlth District	CLASSIFIED	ENV HEALTH SUPV	2
Mt Rogers Hlth District	CLASSIFIED	ENV HEALTH TECH SPEC	3
Mt Rogers Hlth District	CLASSIFIED	EPIDEMIOLOGIST	1
Mt Rogers Hlth District	CLASSIFIED	EPIDEMIOLOGIST SR	1
Mt Rogers Hlth District	CLASSIFIED	Fiscal Tech	1
Mt Rogers Hlth District	CLASSIFIED	Fiscal Tech Sr	3
Mt Rogers Hlth District	CLASSIFIED	HEALTH COUNSELOR	1
Mt Rogers Hlth District	CLASSIFIED	Health District Dir	1
Mt Rogers Hlth District	CLASSIFIED	HEALTHCARE TECHNICIAN	1
Mt Rogers Hlth District	CLASSIFIED	HEALTHCARE TECHNICIAN SENIOR	2
Mt Rogers Hlth District	CLASSIFIED	HR ANALYST	1
Mt Rogers Hlth District	CLASSIFIED	HUMAN SVCS PROG SPEC	1
Mt Rogers Hlth District	CLASSIFIED	LOCAL HEALTH EMERG COORD	1
Mt Rogers Hlth District	CLASSIFIED	MRC COORDINATOR	1
Mt Rogers Hlth District	CLASSIFIED	NUTRITIONIST	1

August 1, 2025

Mt Rogers Hlth District	CLASSIFIED	NUTRITIONIST ASSOC	7
Mt Rogers Hlth District	CLASSIFIED	NUTRITIONIST SR	1
Mt Rogers Hlth District	CLASSIFIED	NUTRITIONIST SUPV SR	1
Mt Rogers Hlth District	CLASSIFIED	OFFICE SVCS SPEC	21
Mt Rogers Hlth District	CLASSIFIED	OFFICE SVCS SUPV SR	2
Mt Rogers Hlth District	CLASSIFIED	PH NURSE	20
Mt Rogers Hlth District	CLASSIFIED	PH NURSE MGR SR	1
Mt Rogers Hlth District	CLASSIFIED	PH NURSE SR	5
Mt Rogers Hlth District	CLASSIFIED	PH NURSE SUPV	2
Mt Rogers Hlth District	CLASSIFIED	PH OUTREACH WORKER	4
Mt Rogers Hlth District	CLASSIFIED	PH OUTREACH WORKER SENIOR	1
Mt Rogers Hlth District	CLASSIFIED	POPULATION HEALTH MANAGER	1
Mt Rogers Hlth District	CLASSIFIED	PROG SUP TECH	1
Mt Rogers Hlth District	WAGE		2
Mt Rogers Hlth District	WAGE	BREASTFEEDING PEER COUNSELOR	2
New River Hlth District			63
New River Hlth District	CLASSIFIED		57
New River Hlth District	CLASSIFIED	BUSINESS MGR C	1
New River Hlth District	CLASSIFIED	CERT NURSE PRACTITIONER SR	1
New River Hlth District	CLASSIFIED	ENV HEALTH ASSOC	1
New River Hlth District	CLASSIFIED	ENV HEALTH MGR SR	1
New River Hlth District	CLASSIFIED	ENV HEALTH SPEC	3
New River Hlth District	CLASSIFIED	ENV HEALTH SPEC SR	3
New River Hlth District	CLASSIFIED	ENV HEALTH SUPV	1
New River Hlth District	CLASSIFIED	ENV HEALTH TECH SPEC	2

August 1, 2025

New River Hlth District	CLASSIFIED	EPIDEMIOLOGIST	1
New River Hlth District	CLASSIFIED	EPIDEMIOLOGIST SR	1
New River Hlth District	CLASSIFIED	Executive Secretary Sr	1
New River Hlth District	CLASSIFIED	FAMILY SUPPORT WORKER	3
New River Hlth District	CLASSIFIED	Fiscal Tech Sr	2
New River Hlth District	CLASSIFIED	HEALTH COUNSELOR	1
New River Hlth District	CLASSIFIED	Health District Dir	1
New River Hlth District	CLASSIFIED	HEALTH EDUCATOR	2
New River Hlth District	CLASSIFIED	HUMAN SVCS PROG SPEC	2
New River Hlth District	CLASSIFIED	LOCAL HEALTH EMERG COORD	1
New River Hlth District	CLASSIFIED	NUTRITIONIST ASSOC	2
New River Hlth District	CLASSIFIED	NUTRITIONIST SUPV SR	1
New River Hlth District	CLASSIFIED	OFFICE SVCS SPEC	10
New River Hlth District	CLASSIFIED	OFFICE SVCS SUPV	1
New River Hlth District	CLASSIFIED	PH NURSE	1
New River Hlth District	CLASSIFIED	PH NURSE MGR SR	1
New River Hlth District	CLASSIFIED	PH NURSE SR	7
New River Hlth District	CLASSIFIED	PH NURSE SUPV	1
New River Hlth District	CLASSIFIED	POPHEALTH PLANNG&IMPRV COORD	1
New River Hlth District	CLASSIFIED	PROG SUP TECH	2
New River Hlth District	CLASSIFIED	Prog Sup Tech Sr	1
New River Hlth District	CLASSIFIED	VOLUNTEER SVCS SUPV	1
New River Hlth District	WAGE		6
New River Hlth District	WAGE	BREASTFEEDING PEER COUNSELOR	1
New River Hlth District	WAGE	CERT NURSE PRACTITIONER SR	1

August 1, 2025

New River Hlth District	WAGE	Housekeeping Worker	2
New River Hlth District	WAGE	Motor Vehicle Operator B	1
New River Hlth District	WAGE	NUTRITIONIST ASST	1
Norfolk Hlth District			100
Norfolk Hlth District	CLASSIFIED		98
Norfolk Hlth District	CLASSIFIED	ACCOUNTANT SR	1
Norfolk Hlth District	CLASSIFIED	AUTONOMOUS CERT NP	1
Norfolk Hlth District	CLASSIFIED	Business Mgr A	1
Norfolk Hlth District	CLASSIFIED	BUSINESS RESOURCE COORDINATOR	1
Norfolk Hlth District	CLASSIFIED	BUYER	1
Norfolk Hlth District	CLASSIFIED	CHIEF OPERATIONS OFFICER	1
Norfolk Hlth District	CLASSIFIED	DISTRICT IT ANALYST	1
Norfolk Hlth District	CLASSIFIED	ENV HEALTH ASST	2
Norfolk Hlth District	CLASSIFIED	ENV HEALTH MGR SR	1
Norfolk Hlth District	CLASSIFIED	ENV HEALTH SPEC	1
Norfolk Hlth District	CLASSIFIED	ENV HEALTH SPEC SR	11
Norfolk Hlth District	CLASSIFIED	ENV HEALTH SUPV	3
Norfolk Hlth District	CLASSIFIED	EPIDEMIOLOGIST	2
Norfolk Hlth District	CLASSIFIED	EPIDEMIOLOGIST MID-LEVEL	1
Norfolk Hlth District	CLASSIFIED	EPIDEMIOLOGIST SR	1
Norfolk Hlth District	CLASSIFIED	Fiscal Asst	1
Norfolk Hlth District	CLASSIFIED	Fiscal Tech	3
Norfolk Hlth District	CLASSIFIED	HEALTH COUNSELOR	5
Norfolk Hlth District	CLASSIFIED	Health District Dir	1
Norfolk Hlth District	CLASSIFIED	HEALTH EDUCATOR	3

August 1, 2025

Norfolk Hlth District	CLASSIFIED	HEALTHCARE TECHNICIAN SENIOR	2
Norfolk Hlth District	CLASSIFIED	HUMAN SVCS PROG SPEC	2
Norfolk Hlth District	CLASSIFIED	HUMAN SVCS SUPV-FIELD	1
Norfolk Hlth District	CLASSIFIED	LOCAL HEALTH EMERG COORD	1
Norfolk Hlth District	CLASSIFIED	MRC COORDINATOR	1
Norfolk Hlth District	CLASSIFIED	NURSING ASST	1
Norfolk Hlth District	CLASSIFIED	NUTRITIONIST	1
Norfolk Hlth District	CLASSIFIED	NUTRITIONIST ASSOC	10
Norfolk Hlth District	CLASSIFIED	NUTRITIONIST ASST	2
Norfolk Hlth District	CLASSIFIED	NUTRITIONIST SR	3
Norfolk Hlth District	CLASSIFIED	NUTRITIONIST SUPV SR	1
Norfolk Hlth District	CLASSIFIED	OFFICE SVCS SPEC	6
Norfolk Hlth District	CLASSIFIED	OFFICE SVCS SUPV	1
Norfolk Hlth District	CLASSIFIED	OFFICE SVCS SUPV SR	1
Norfolk Hlth District	CLASSIFIED	PH NURSE	4
Norfolk Hlth District	CLASSIFIED	PH NURSE MGR SR	1
Norfolk Hlth District	CLASSIFIED	PH NURSE SR	4
Norfolk Hlth District	CLASSIFIED	PH NURSE SUPV	2
Norfolk Hlth District	CLASSIFIED	PH PHYSICIAN SPEC	1
Norfolk Hlth District	CLASSIFIED	PH PHYSICIAN SUPV	1
Norfolk Hlth District	CLASSIFIED	POPULATION HEALTH MANAGER	1
Norfolk Hlth District	CLASSIFIED	PRACTICAL NURSE A	1
Norfolk Hlth District	CLASSIFIED	Printing Press Operator B	1
Norfolk Hlth District	CLASSIFIED	PROG SUP TECH	2
Norfolk Hlth District	CLASSIFIED	PUBLIC RELATIONS ASST	1

August 1, 2025

Norfolk Hlth District	CLASSIFIED	PUBLIC RELATIONS COORD	1
Norfolk Hlth District	CLASSIFIED	SECRETARY SR	1
Norfolk Hlth District	CLASSIFIED	Storekeeper	1
Norfolk Hlth District	CLASSIFIED	Storekeeper Supv	1
Norfolk Hlth District	WAGE		2
Norfolk Hlth District	WAGE	BREASTFEEDING PEER COUNSELOR	2
Peninsula Hlth District			60
Peninsula Hlth District	CLASSIFIED		59
Peninsula Hlth District	CLASSIFIED	ADM STAFF ASST	1
Peninsula Hlth District	CLASSIFIED	Business Mgr A	1
Peninsula Hlth District	CLASSIFIED	BUSINESS MGR C	1
Peninsula Hlth District	CLASSIFIED	BUYER	1
Peninsula Hlth District	CLASSIFIED	ENV HEALTH MGR SR	1
Peninsula Hlth District	CLASSIFIED	ENV HEALTH SPEC	5
Peninsula Hlth District	CLASSIFIED	ENV HEALTH SPEC SR	2
Peninsula Hlth District	CLASSIFIED	ENV HEALTH SUPV	1
Peninsula Hlth District	CLASSIFIED	ENV HEALTH TECH SPEC	4
Peninsula Hlth District	CLASSIFIED	EPIDEMIOLOGIST	1
Peninsula Hlth District	CLASSIFIED	Fiscal Tech	1
Peninsula Hlth District	CLASSIFIED	Fiscal Tech Sr	1
Peninsula Hlth District	CLASSIFIED	Health District Dir	1
Peninsula Hlth District	CLASSIFIED	HR ANALYST	1
Peninsula Hlth District	CLASSIFIED	LOCAL HEALTH EMERG COORD	1
Peninsula Hlth District	CLASSIFIED	MRC COORDINATOR	1
Peninsula Hlth District	CLASSIFIED	NUTRITIONIST	2

August 1, 2025

Peninsula Hlth District	CLASSIFIED	NUTRITIONIST ASSOC	3
Peninsula Hlth District	CLASSIFIED	NUTRITIONIST SR	1
Peninsula Hlth District	CLASSIFIED	NUTRITIONIST SUPV SR	1
Peninsula Hlth District	CLASSIFIED	OFFICE SVCS SPEC	9
Peninsula Hlth District	CLASSIFIED	OFFICE SVCS SUPV SR	1
Peninsula Hlth District	CLASSIFIED	PH NURSE	2
Peninsula Hlth District	CLASSIFIED	PH NURSE MGR SR	1
Peninsula Hlth District	CLASSIFIED	PH NURSE SR	4
Peninsula Hlth District	CLASSIFIED	PH NURSE SUPV	2
Peninsula Hlth District	CLASSIFIED	POPULATION HEALTH COMM COORD	1
Peninsula Hlth District	CLASSIFIED	POPULATION HEALTH MANAGER	1
Peninsula Hlth District	CLASSIFIED	PROG SUP TECH	4
Peninsula Hlth District	CLASSIFIED	Storekeeper Sr	1
Peninsula Hlth District	CLASSIFIED	Storekeeper Supv	1
Peninsula Hlth District	CLASSIFIED	TRAINING AND DEVEL COORD	1
Peninsula Hlth District	WAGE		1
Peninsula Hlth District	WAGE	NUTRITIONIST	1
Piedmont Hlth District			53
Piedmont Hlth District	CLASSIFIED		45
Piedmont Hlth District	CLASSIFIED	Business Mgr A	1
Piedmont Hlth District	CLASSIFIED	BUSINESS MGR C	1
Piedmont Hlth District	CLASSIFIED	CERT NURSE PRACTITIONER SR	1
Piedmont Hlth District	CLASSIFIED	DISTRICT IT ANALYST	1
Piedmont Hlth District	CLASSIFIED	Env Health Mgr	1
Piedmont Hlth District	CLASSIFIED	ENV HEALTH SPEC	2

August 1, 2025

Piedmont Hlth District	CLASSIFIED	ENV HEALTH SPEC SR	7
Piedmont Hlth District	CLASSIFIED	EPIDEMIOLOGIST	1
Piedmont Hlth District	CLASSIFIED	EPIDEMIOLOGIST SR	1
Piedmont Hlth District	CLASSIFIED	Fiscal Asst	1
Piedmont Hlth District	CLASSIFIED	Fiscal Tech Sr	1
Piedmont Hlth District	CLASSIFIED	Health District Dir	1
Piedmont Hlth District	CLASSIFIED	HEALTH EDUCATOR	1
Piedmont Hlth District	CLASSIFIED	LOCAL HEALTH EMERG COORD	1
Piedmont Hlth District	CLASSIFIED	NUTRITIONIST ASSOC	4
Piedmont Hlth District	CLASSIFIED	NUTRITIONIST SUPV SR	1
Piedmont Hlth District	CLASSIFIED	OFFICE SVCS SPEC	8
Piedmont Hlth District	CLASSIFIED	OFFICE SVCS SUPV SR	2
Piedmont Hlth District	CLASSIFIED	PH NURSE MGR SR	1
Piedmont Hlth District	CLASSIFIED	PH NURSE SR	7
Piedmont Hlth District	CLASSIFIED	POPULATION HEALTH MANAGER	1
Piedmont Hlth District	WAGE		8
Piedmont Hlth District	WAGE	CERT NURSE PRACTITIONER SR	1
Piedmont Hlth District	WAGE	Housekeeping Worker	2
Piedmont Hlth District	WAGE	NUTRITIONIST ASST	1
Piedmont Hlth District	WAGE	OFFICE SVCS SPEC	4
Pittsylvania/Danville Hlth District			43
Pittsylvania/Danville Hlth District	CLASSIFIED		43
Pittsylvania/Danville Hlth District	CLASSIFIED	Business Mgr A	1
Pittsylvania/Danville Hlth District	CLASSIFIED	BUSINESS MGR B	1
Pittsylvania/Danville Hlth District	CLASSIFIED	BUSINESS MGR C	1

August 1, 2025

Pittsylvania/Danville Hlth District	CLASSIFIED	ENV HEALTH MGR SR	1
Pittsylvania/Danville Hlth District	CLASSIFIED	ENV HEALTH SPEC	2
Pittsylvania/Danville Hlth District	CLASSIFIED	ENV HEALTH SPEC SR	1
Pittsylvania/Danville Hlth District	CLASSIFIED	ENV HEALTH SUPV	2
Pittsylvania/Danville Hlth District	CLASSIFIED	ENV HEALTH TECH SPEC	1
Pittsylvania/Danville Hlth District	CLASSIFIED	EPIDEMIOLOGIST	1
Pittsylvania/Danville Hlth District	CLASSIFIED	EPIDEMIOLOGIST SR	1
Pittsylvania/Danville Hlth District	CLASSIFIED	Executive Secretary Sr	1
Pittsylvania/Danville Hlth District	CLASSIFIED	Fiscal Asst	1
Pittsylvania/Danville Hlth District	CLASSIFIED	Health District Dir	1
Pittsylvania/Danville Hlth District	CLASSIFIED	HUMAN RESOURCE ASST	1
Pittsylvania/Danville Hlth District	CLASSIFIED	LOCAL HEALTH EMERG COORD	1
Pittsylvania/Danville Hlth District	CLASSIFIED	NURSING ASST	1
Pittsylvania/Danville Hlth District	CLASSIFIED	NUTRITIONIST ASSOC	2
Pittsylvania/Danville Hlth District	CLASSIFIED	NUTRITIONIST ASST	2
Pittsylvania/Danville Hlth District	CLASSIFIED	NUTRITIONIST SUPV SR	1
Pittsylvania/Danville Hlth District	CLASSIFIED	OFFICE SVCS SPEC	8
Pittsylvania/Danville Hlth District	CLASSIFIED	OFFICE SVCS SUPV SR	1
Pittsylvania/Danville Hlth District	CLASSIFIED	PH NURSE	5
Pittsylvania/Danville Hlth District	CLASSIFIED	PH NURSE MGR SR	1
Pittsylvania/Danville Hlth District	CLASSIFIED	PH NURSE SUPV	1
Pittsylvania/Danville Hlth District	CLASSIFIED	PH OUTREACH WORKER	1
Pittsylvania/Danville Hlth District	CLASSIFIED	POPULATION HEALTH MANAGER	1
Pittsylvania/Danville Hlth District	CLASSIFIED	PRACTICAL NURSE A	1
Pittsylvania/Danville Hlth District	CLASSIFIED	PROG SUP TECH	1

August 1, 2025

Portsmouth Hlth District			43
Portsmouth Hlth District	CLASSIFIED		42
Portsmouth Hlth District	CLASSIFIED	ACCOUNTANT	1
Portsmouth Hlth District	CLASSIFIED	BUSINESS MGR C	1
Portsmouth Hlth District	CLASSIFIED	BUYER	1
Portsmouth Hlth District	CLASSIFIED	ENV HEALTH ASSOC	1
Portsmouth Hlth District	CLASSIFIED	Env Health Mgr	1
Portsmouth Hlth District	CLASSIFIED	ENV HEALTH SPEC SR	3
Portsmouth Hlth District	CLASSIFIED	ENV HEALTH TECH SPEC	1
Portsmouth Hlth District	CLASSIFIED	EPIDEMIOLOGIST	1
Portsmouth Hlth District	CLASSIFIED	EPIDEMIOLOGIST SR	1
Portsmouth Hlth District	CLASSIFIED	Fiscal Tech	3
Portsmouth Hlth District	CLASSIFIED	Fiscal Tech Sr	1
Portsmouth Hlth District	CLASSIFIED	HEALTH COUNSELOR	1
Portsmouth Hlth District	CLASSIFIED	Health District Dir	1
Portsmouth Hlth District	CLASSIFIED	HEALTH EDUCATOR SR	1
Portsmouth Hlth District	CLASSIFIED	HR ANALYST	1
Portsmouth Hlth District	CLASSIFIED	HUMAN SVCS PROG COORD	1
Portsmouth Hlth District	CLASSIFIED	LOCAL HEALTH EMERG COORD	1
Portsmouth Hlth District	CLASSIFIED	MRC COORDINATOR	1
Portsmouth Hlth District	CLASSIFIED	NUTRITIONIST	1
Portsmouth Hlth District	CLASSIFIED	NUTRITIONIST ASST	2
Portsmouth Hlth District	CLASSIFIED	NUTRITIONIST SUPV SR	1
Portsmouth Hlth District	CLASSIFIED	OFFICE SVCS ASST	2
Portsmouth Hlth District	CLASSIFIED	OFFICE SVCS SPEC	3

August 1, 2025

Portsmouth Hlth District	CLASSIFIED	OFFICE SVCS SUPV	1
Portsmouth Hlth District	CLASSIFIED	PH NURSE	2
Portsmouth Hlth District	CLASSIFIED	PH NURSE SR	4
Portsmouth Hlth District	CLASSIFIED	PH NURSE SUPV	1
Portsmouth Hlth District	CLASSIFIED	PH OUTREACH WORKER	1
Portsmouth Hlth District	CLASSIFIED	POPHEALTH PLANNG&IMPRV COORD	1
Portsmouth Hlth District	CLASSIFIED	POPULATION HEALTH MANAGER	1
Portsmouth Hlth District	WAGE		1
Portsmouth Hlth District	WAGE	BREASTFEEDING PEER COUNSELOR	1
Prince William Hlth District			87
Prince William Hlth District	CLASSIFIED		82
Prince William Hlth District	CLASSIFIED	Business Mgr A	1
Prince William Hlth District	CLASSIFIED	BUSINESS MGR C	1
Prince William Hlth District	CLASSIFIED	BUYER	1
Prince William Hlth District	CLASSIFIED	CERT NURSE PRACTITIONER SR	2
Prince William Hlth District	CLASSIFIED	CHIEF OPERATIONS OFFICER	1
Prince William Hlth District	CLASSIFIED	Env Health Mgr	1
Prince William Hlth District	CLASSIFIED	ENV HEALTH SPEC	2
Prince William Hlth District	CLASSIFIED	ENV HEALTH SPEC SR	10
Prince William Hlth District	CLASSIFIED	ENV HEALTH SUPV	2
Prince William Hlth District	CLASSIFIED	ENV HEALTH TECH SPEC	2
Prince William Hlth District	CLASSIFIED	EPIDEMIOLOGIST LEAD	1
Prince William Hlth District	CLASSIFIED	EPIDEMIOLOGIST MID-LEVEL	1
Prince William Hlth District	CLASSIFIED	Executive Secretary Sr	1
Prince William Hlth District	CLASSIFIED	GRANTS SPEC	1

August 1, 2025

Prince William Hlth District	CLASSIFIED	Health District Dir	1
Prince William Hlth District	CLASSIFIED	HEALTHCARE TECHNICIAN	2
Prince William Hlth District	CLASSIFIED	HR ANALYST	1
Prince William Hlth District	CLASSIFIED	HUMAN SVCS PROG SPEC	1
Prince William Hlth District	CLASSIFIED	LOCAL HEALTH EMERG COORD	1
Prince William Hlth District	CLASSIFIED	NUTRITIONIST	3
Prince William Hlth District	CLASSIFIED	NUTRITIONIST ASSOC	5
Prince William Hlth District	CLASSIFIED	NUTRITIONIST ASST	2
Prince William Hlth District	CLASSIFIED	NUTRITIONIST SR	2
Prince William Hlth District	CLASSIFIED	NUTRITIONIST SUPV SR	1
Prince William Hlth District	CLASSIFIED	OFFICE SVCS SPEC	10
Prince William Hlth District	CLASSIFIED	OFFICE SVCS SUPV SR	1
Prince William Hlth District	CLASSIFIED	PH NURSE	13
Prince William Hlth District	CLASSIFIED	PH NURSE MGR SR	1
Prince William Hlth District	CLASSIFIED	PH NURSE SR	1
Prince William Hlth District	CLASSIFIED	PH NURSE SUPV	3
Prince William Hlth District	CLASSIFIED	PH OUTREACH WORKER	1
Prince William Hlth District	CLASSIFIED	POPULATION HEALTH COMM COORD	1
Prince William Hlth District	CLASSIFIED	POPULATION HEALTH MANAGER	1
Prince William Hlth District	CLASSIFIED	PRACTICAL NURSE A	2
Prince William Hlth District	CLASSIFIED	PROG SUP TECH	2
Prince William Hlth District	WAGE		5
Prince William Hlth District	WAGE	BREASTFEEDING PEER COUNSELOR	2
Prince William Hlth District	WAGE	NUTRITIONIST	1
Prince William Hlth District	WAGE	NUTRITIONIST ASST	1

August 1, 2025

Prince William Hlth District	WAGE	OFFICE SVCS SPEC	1
Rappahannock Hlth District			94
Rappahannock Hlth District	CLASSIFIED		83
Rappahannock Hlth District	CLASSIFIED	Business Mgr A	1
Rappahannock Hlth District	CLASSIFIED	BUSINESS MGR C	1
Rappahannock Hlth District	CLASSIFIED	ENV HEALTH MGR SR	1
Rappahannock Hlth District	CLASSIFIED	ENV HEALTH SPEC	1
Rappahannock Hlth District	CLASSIFIED	ENV HEALTH SPEC SR	9
Rappahannock Hlth District	CLASSIFIED	ENV HEALTH SUPV	4
Rappahannock Hlth District	CLASSIFIED	ENV HEALTH TECH SPEC	1
Rappahannock Hlth District	CLASSIFIED	EPIDEMIOLOGIST SR	1
Rappahannock Hlth District	CLASSIFIED	Executive Secretary Sr	1
Rappahannock Hlth District	CLASSIFIED	Fiscal Tech Sr	1
Rappahannock Hlth District	CLASSIFIED	HEALTH COUNSELOR	1
Rappahannock Hlth District	CLASSIFIED	Health District Dir	1
Rappahannock Hlth District	CLASSIFIED	HEALTHCARE TECHNICIAN SENIOR	3
Rappahannock Hlth District	CLASSIFIED	HR ANALYST	1
Rappahannock Hlth District	CLASSIFIED	HUMAN SVCS PROG SPEC	1
Rappahannock Hlth District	CLASSIFIED	LOCAL HEALTH EMERG COORD	2
Rappahannock Hlth District	CLASSIFIED	NUTRITIONIST	1
Rappahannock Hlth District	CLASSIFIED	NUTRITIONIST ASSOC	8
Rappahannock Hlth District	CLASSIFIED	NUTRITIONIST SR	2
Rappahannock Hlth District	CLASSIFIED	NUTRITIONIST SUPV SR	1
Rappahannock Hlth District	CLASSIFIED	OFFICE SVCS SPEC	11
Rappahannock Hlth District	CLASSIFIED	OFFICE SVCS SUPV	5

August 1, 2025

Rappahannock Hlth District	CLASSIFIED	PH NURSE	9
Rappahannock Hlth District	CLASSIFIED	PH NURSE MGR SR	1
Rappahannock Hlth District	CLASSIFIED	PH NURSE SR	7
Rappahannock Hlth District	CLASSIFIED	PH NURSE SUPV	5
Rappahannock Hlth District	CLASSIFIED	PH OUTREACH WORKER	1
Rappahannock Hlth District	CLASSIFIED	PHYSICIAN ASSISTANT	1
Rappahannock Hlth District	CLASSIFIED	POPHEALTH PLANNG&IMPRV COORD	1
Rappahannock Hlth District	WAGE		11
Rappahannock Hlth District	WAGE	BREASTFEEDING PEER COUNSELOR	2
Rappahannock Hlth District	WAGE	Housekeeping Worker	2
Rappahannock Hlth District	WAGE	NUTRITIONIST	1
Rappahannock Hlth District	WAGE	NUTRITIONIST ASSOC	2
Rappahannock Hlth District	WAGE	OFFICE SVCS SPEC	1
Rappahannock Hlth District	WAGE	PH NURSE	2
Rappahannock Hlth District	WAGE	PH OUTREACH WORKER	1
Rappahannock/Rapidan Hlth District			61
Rappahannock/Rapidan Hlth District	CLASSIFIED		56
Rappahannock/Rapidan Hlth District	CLASSIFIED	ACCOUNTANT SR	1
Rappahannock/Rapidan Hlth District	CLASSIFIED	BUSINESS MGR C	1
Rappahannock/Rapidan Hlth District	CLASSIFIED	DISTRICT IT ANALYST SR	1
Rappahannock/Rapidan Hlth District	CLASSIFIED	ENV HEALTH MGR SR	1
Rappahannock/Rapidan Hlth District	CLASSIFIED	ENV HEALTH SPEC	3
Rappahannock/Rapidan Hlth District	CLASSIFIED	ENV HEALTH SPEC SR	4
Rappahannock/Rapidan Hlth District	CLASSIFIED	ENV HEALTH SUPV	2
Rappahannock/Rapidan Hlth District	CLASSIFIED	ENV HEALTH TECH SPEC	2

August 1, 2025

Rappahannock/Rapidan Hlth District	CLASSIFIED	EPIDEMIOLOGIST	1
Rappahannock/Rapidan Hlth District	CLASSIFIED	EPIDEMIOLOGIST SR	1
Rappahannock/Rapidan Hlth District	CLASSIFIED	Fiscal Tech	1
Rappahannock/Rapidan Hlth District	CLASSIFIED	Health District Dir	1
Rappahannock/Rapidan Hlth District	CLASSIFIED	HUMAN SVCS PROG SPEC	2
Rappahannock/Rapidan Hlth District	CLASSIFIED	LOCAL HEALTH EMERG COORD	1
Rappahannock/Rapidan Hlth District	CLASSIFIED	NUTRITIONIST	1
Rappahannock/Rapidan Hlth District	CLASSIFIED	NUTRITIONIST ASSOC	5
Rappahannock/Rapidan Hlth District	CLASSIFIED	NUTRITIONIST SUPV SR	1
Rappahannock/Rapidan Hlth District	CLASSIFIED	OFFICE SVCS SPEC	11
Rappahannock/Rapidan Hlth District	CLASSIFIED	OFFICE SVCS SUPV SR	2
Rappahannock/Rapidan Hlth District	CLASSIFIED	PH NURSE	6
Rappahannock/Rapidan Hlth District	CLASSIFIED	PH NURSE MGR SR	1
Rappahannock/Rapidan Hlth District	CLASSIFIED	PH NURSE SR	3
Rappahannock/Rapidan Hlth District	CLASSIFIED	PH NURSE SUPV	1
Rappahannock/Rapidan Hlth District	CLASSIFIED	PH OUTREACH WORKER 2C	1
Rappahannock/Rapidan Hlth District	CLASSIFIED	POPULATION HEALTH MANAGER	1
Rappahannock/Rapidan Hlth District	CLASSIFIED	PROG SUP TECH	1
Rappahannock/Rapidan Hlth District	WAGE		5
Rappahannock/Rapidan Hlth District	WAGE	BREASTFEEDING PEER COUNSELOR	2
Rappahannock/Rapidan Hlth District	WAGE	Fiscal Asst	1
Rappahannock/Rapidan Hlth District	WAGE	HEALTHCARE TECHNICIAN	1
Rappahannock/Rapidan Hlth District	WAGE	OFFICE SVCS SPEC	1
Richmond City Hlth District			104
Richmond City Hlth District	CLASSIFIED		103

August 1, 2025

Richmond City Hlth District	CLASSIFIED	ACCOUNTANT SR	1
		AGENCY MANAGEMENT LEAD	
Richmond City Hlth District	CLASSIFIED	ANALYST	1
Richmond City Hlth District	CLASSIFIED	Business Mgr A	2
Richmond City Hlth District	CLASSIFIED	BUSINESS MGR C	1
Richmond City Hlth District	CLASSIFIED	BUYER	1
Richmond City Hlth District	CLASSIFIED	CERT NURSE PRACTITIONER SR	2
Richmond City Hlth District	CLASSIFIED	CLINICAL SOCIAL WORK SUPV	1
Richmond City Hlth District	CLASSIFIED	Env Health Mgr	1
Richmond City Hlth District	CLASSIFIED	ENV HEALTH SPEC	3
Richmond City Hlth District	CLASSIFIED	ENV HEALTH SPEC SR	4
Richmond City Hlth District	CLASSIFIED	ENV HEALTH SUPV	2
Richmond City Hlth District	CLASSIFIED	ENV HEALTH TECH SPEC	1
Richmond City Hlth District	CLASSIFIED	EPIDEMIOLOGIST	1
Richmond City Hlth District	CLASSIFIED	EPIDEMIOLOGIST SR	2
Richmond City Hlth District	CLASSIFIED	Executive Secretary Sr	1
Richmond City Hlth District	CLASSIFIED	Fiscal Tech Sr	1
Richmond City Hlth District	CLASSIFIED	Health District Dir	1
Richmond City Hlth District	CLASSIFIED	HEALTH EDUCATOR	6
Richmond City Hlth District	CLASSIFIED	HEALTH EDUCATOR SR	6
Richmond City Hlth District	CLASSIFIED	HEALTHCARE TECHNICIAN	1
Richmond City Hlth District	CLASSIFIED	HEALTHCARE TECHNICIAN SENIOR	1
Richmond City Hlth District	CLASSIFIED	HR ANALYST	1
Richmond City Hlth District	CLASSIFIED	HUMAN SVCS MGR-FIELD	1
Richmond City Hlth District	CLASSIFIED	HUMAN SVCS PROG COORD	3

August 1, 2025

Richmond City Hlth District	CLASSIFIED	HUMAN SVCS PROG SPEC	5
Richmond City Hlth District	CLASSIFIED	HUMAN SVCS PROG SUPV	1
Richmond City Hlth District	CLASSIFIED	LEAD CERTIFIED NURSE PRACT	1
Richmond City Hlth District	CLASSIFIED	LOCAL HEALTH EMERG COORD	1
Richmond City Hlth District	CLASSIFIED	NUTRITIONIST	2
Richmond City Hlth District	CLASSIFIED	NUTRITIONIST ASSOC	6
Richmond City Hlth District	CLASSIFIED	NUTRITIONIST SR	1
Richmond City Hlth District	CLASSIFIED	NUTRITIONIST SUPV SR	1
Richmond City Hlth District	CLASSIFIED	OFFICE SVCS SPEC	3
Richmond City Hlth District	CLASSIFIED	OFFICE SVCS SUPV	1
Richmond City Hlth District	CLASSIFIED	PH NURSE	8
Richmond City Hlth District	CLASSIFIED	PH NURSE SR	5
Richmond City Hlth District	CLASSIFIED	PH NURSE SUPV	3
Richmond City Hlth District	CLASSIFIED	PH OUTREACH WORKER	1
Richmond City Hlth District	CLASSIFIED	PH PHYSICIAN SUPV	2
Richmond City Hlth District	CLASSIFIED	Policy Analyst	2
Richmond City Hlth District	CLASSIFIED	POPHEALTH PLANNG&IMPRV COORD	1
Richmond City Hlth District	CLASSIFIED	POPULATION HEALTH COMM COORD	1
Richmond City Hlth District	CLASSIFIED	PROG SUP TECH	8
Richmond City Hlth District	CLASSIFIED	Prog Sup Tech Sr	1
Richmond City Hlth District	CLASSIFIED	Public Relations Spec	2
Richmond City Hlth District	CLASSIFIED	STATISTICAL ANALYST	1
Richmond City Hlth District	CLASSIFIED	Storekeeper Sr	1
Richmond City Hlth District	WAGE		1
Richmond City Hlth District	WAGE	BREASTFEEDING PEER COUNSELOR	1

August 1, 2025

Roanoke Hlth District			73
Roanoke Hlth District	CLASSIFIED		67
Roanoke Hlth District	CLASSIFIED	Business Mgr A	1
Roanoke Hlth District	CLASSIFIED	BUSINESS MGR C	1
Roanoke Hlth District	CLASSIFIED	DISTRICT QLTY & PROC IMP ADMIN	1
Roanoke Hlth District	CLASSIFIED	ENV HEALTH ASSOC	1
Roanoke Hlth District	CLASSIFIED	ENV HEALTH SPEC SR	4
Roanoke Hlth District	CLASSIFIED	ENV HEALTH SUPV	1
Roanoke Hlth District	CLASSIFIED	EPIDEMIOLOGIST	1
Roanoke Hlth District	CLASSIFIED	EXECUTIVE SECRETARY	1
Roanoke Hlth District	CLASSIFIED	Executive Secretary Sr	1
Roanoke Hlth District	CLASSIFIED	FAMILY SUPPORT WORKER	3
Roanoke Hlth District	CLASSIFIED	Fiscal Tech	1
Roanoke Hlth District	CLASSIFIED	FISCAL TECH 3B	1
Roanoke Hlth District	CLASSIFIED	Health District Dir	1
Roanoke Hlth District	CLASSIFIED	HEALTH EDUCATOR	2
Roanoke Hlth District	CLASSIFIED	HEALTHCARE TECHNICIAN	1
Roanoke Hlth District	CLASSIFIED	HR ANALYST	1
Roanoke Hlth District	CLASSIFIED	HUMAN SVCS PROG COORD	1
Roanoke Hlth District	CLASSIFIED	LOCAL HEALTH EMERG COORD	1
Roanoke Hlth District	CLASSIFIED	MATERIAL MANAGEMENT TECH	1
Roanoke Hlth District	CLASSIFIED	NUTRITIONIST ASSOC	7
Roanoke Hlth District	CLASSIFIED	NUTRITIONIST ASST	3
Roanoke Hlth District	CLASSIFIED	NUTRITIONIST SUPV SR	1
Roanoke Hlth District	CLASSIFIED	OFFICE SVCS SPEC	8

August 1, 2025

Roanoke Hlth District	CLASSIFIED	OFFICE SVCS SUPV SR	1
Roanoke Hlth District	CLASSIFIED	PH NURSE	3
Roanoke Hlth District	CLASSIFIED	PH NURSE MGR SR	1
Roanoke Hlth District	CLASSIFIED	PH NURSE SR	5
Roanoke Hlth District	CLASSIFIED	PH NURSE SUPV	1
Roanoke Hlth District	CLASSIFIED	PH OUTREACH WORKER	1
Roanoke Hlth District	CLASSIFIED	PH OUTREACH WORKER SENIOR	1
Roanoke Hlth District	CLASSIFIED	PH PHYSICIAN SUPV	1
Roanoke Hlth District	CLASSIFIED	PHYSICIAN ASSISTANT	2
Roanoke Hlth District	CLASSIFIED	POPHEALTH PLANNG&IMPRV COORD	1
Roanoke Hlth District	CLASSIFIED	POPULATION HEALTH MANAGER	1
Roanoke Hlth District	CLASSIFIED	PROG SUP TECH	4
Roanoke Hlth District	CLASSIFIED	Prog Sup Tech Sr	1
Roanoke Hlth District	WAGE		6
Roanoke Hlth District	WAGE	BREASTFEEDING PEER COUNSELOR	1
Roanoke Hlth District	WAGE	HEALTH EDUCATOR	1
Roanoke Hlth District	WAGE	OFFICE SVCS SPEC	1
Roanoke Hlth District	WAGE	PH NURSE	1
Roanoke Hlth District	WAGE	PH Physician	1
Roanoke Hlth District	WAGE	Storekeeper	1
Southside Hlth District			25
Southside Hlth District	CLASSIFIED		23
Southside Hlth District	CLASSIFIED	CERT NURSE PRACTITIONER	1
Southside Hlth District	CLASSIFIED	ENV HEALTH SPEC	2
Southside Hlth District	CLASSIFIED	ENV HEALTH SPEC SR	3

August 1, 2025

Southside Hlth District	CLASSIFIED	EPIDEMIOLOGIST SR	1
Southside Hlth District	CLASSIFIED	MRC COORDINATOR	1
Southside Hlth District	CLASSIFIED	NUTRITIONIST ASSOC	2
Southside Hlth District	CLASSIFIED	NUTRITIONIST ASST	1
Southside Hlth District	CLASSIFIED	NUTRITIONIST SUPV SR	1
Southside Hlth District	CLASSIFIED	OFFICE SVCS SPEC	5
Southside Hlth District	CLASSIFIED	OFFICE SVCS SUPV SR	1
Southside Hlth District	CLASSIFIED	PH NURSE	2
Southside Hlth District	CLASSIFIED	PH NURSE SR	1
Southside Hlth District	CLASSIFIED	PH NURSE SUPV	1
Southside Hlth District	CLASSIFIED	PROG SUP TECH	1
Southside Hlth District	WAGE		2
Southside Hlth District	WAGE	BREASTFEEDING PEER COUNSELOR	1
Southside Hlth District	WAGE	Housekeeping Worker	1
Three Rivers Hlth District			74
Three Rivers Hlth District	CLASSIFIED		70
Three Rivers Hlth District	CLASSIFIED	Business Mgr A	1
Three Rivers Hlth District	CLASSIFIED	BUSINESS MGR C	1
Three Rivers Hlth District	CLASSIFIED	BUYER	1
Three Rivers Hlth District	CLASSIFIED	CERT NURSE PRACTITIONER SR	1
Three Rivers Hlth District	CLASSIFIED	ENV HEALTH MGR SR	1
Three Rivers Hlth District	CLASSIFIED	ENV HEALTH SPEC	5
Three Rivers Hlth District	CLASSIFIED	ENV HEALTH SPEC SR	10
Three Rivers Hlth District	CLASSIFIED	ENV HEALTH SUPV	3
Three Rivers Hlth District	CLASSIFIED	ENV HEALTH TECH SPEC	1

August 1, 2025

Three Rivers Hlth District	CLASSIFIED	EPIDEMIOLOGIST	1
Three Rivers Hlth District	CLASSIFIED	EPIDEMIOLOGIST SR	1
Three Rivers Hlth District	CLASSIFIED	Fiscal Tech	2
Three Rivers Hlth District	CLASSIFIED	Health District Dir	1
Three Rivers Hlth District	CLASSIFIED	HEALTH EDUCATOR SR	1
Three Rivers Hlth District	CLASSIFIED	HR ANALYST	1
Three Rivers Hlth District	CLASSIFIED	HUMAN SVCS PROG SPEC	3
Three Rivers Hlth District	CLASSIFIED	LOCAL HEALTH EMERG COORD	1
Three Rivers Hlth District	CLASSIFIED	MRC COORDINATOR	1
Three Rivers Hlth District	CLASSIFIED	NUTRITIONIST ASSOC	4
Three Rivers Hlth District	CLASSIFIED	NUTRITIONIST SUPV SR	1
Three Rivers Hlth District	CLASSIFIED	OFFICE SVCS SPEC	11
Three Rivers Hlth District	CLASSIFIED	OFFICE SVCS SUPV SR	2
Three Rivers Hlth District	CLASSIFIED	PH NURSE	6
Three Rivers Hlth District	CLASSIFIED	PH NURSE MGR SR	1
Three Rivers Hlth District	CLASSIFIED	PH NURSE SR	4
Three Rivers Hlth District	CLASSIFIED	PH NURSE SUPV	2
Three Rivers Hlth District	CLASSIFIED	PH OUTREACH WORKER	1
Three Rivers Hlth District	CLASSIFIED	PROG SUP TECH	2
Three Rivers Hlth District	WAGE		4
Three Rivers Hlth District	WAGE	BREASTFEEDING PEER COUNSELOR	1
Three Rivers Hlth District	WAGE	ENV HEALTH ASSOC	1
Three Rivers Hlth District	WAGE	OFFICE SVCS SPEC	1
Three Rivers Hlth District	WAGE	PROG SUP TECH	1
Virginia Beach Hlth District			95

August 1, 2025

Virginia Beach Hlth District	CLASSIFIED		88
Virginia Beach Hlth District	CLASSIFIED	ACCOUNTANT SR	1
Virginia Beach Hlth District	CLASSIFIED	Business Mgr A	1
Virginia Beach Hlth District	CLASSIFIED	BUSINESS MGR C	1
Virginia Beach Hlth District	CLASSIFIED	BUSINESS RESOURCE COORDINATOR	1
Virginia Beach Hlth District	CLASSIFIED	BUYER	1
Virginia Beach Hlth District	CLASSIFIED	CHIEF OPERATIONS OFFICER	1
Virginia Beach Hlth District	CLASSIFIED	CLINICAL SOCIAL WORK SUPV	1
		DISTRICT WORKFORCE ENGMT	
Virginia Beach Hlth District	CLASSIFIED	OFFCR	1
Virginia Beach Hlth District	CLASSIFIED	EMERG SVCS PLANNER	1
Virginia Beach Hlth District	CLASSIFIED	ENV HEALTH MGR SR	1
Virginia Beach Hlth District	CLASSIFIED	ENV HEALTH SPEC	6
Virginia Beach Hlth District	CLASSIFIED	ENV HEALTH SPEC SR	9
Virginia Beach Hlth District	CLASSIFIED	ENV HEALTH SUPV	3
Virginia Beach Hlth District	CLASSIFIED	ENV HEALTH TECH SPEC	1
Virginia Beach Hlth District	CLASSIFIED	EPIDEMIOLOGIST	3
Virginia Beach Hlth District	CLASSIFIED	EPIDEMIOLOGIST SR	1
Virginia Beach Hlth District	CLASSIFIED	Executive Secretary Sr	1
Virginia Beach Hlth District	CLASSIFIED	FAMILY SUPPORT WORKER	2
Virginia Beach Hlth District	CLASSIFIED	Fiscal Asst	2
Virginia Beach Hlth District	CLASSIFIED	Fiscal Tech Sr	1
Virginia Beach Hlth District	CLASSIFIED	HEALTH COUNSELOR	1
Virginia Beach Hlth District	CLASSIFIED	Health District Dir	1
Virginia Beach Hlth District	CLASSIFIED	HEALTHCARE TECHNICIAN	1

August 1, 2025

Virginia Beach Hlth District	CLASSIFIED	HR ANALYST	1
Virginia Beach Hlth District	CLASSIFIED	HUMAN RESOURCE ASST	1
Virginia Beach Hlth District	CLASSIFIED	LOCAL HEALTH EMERG COORD	1
Virginia Beach Hlth District	CLASSIFIED	MRC COORDINATOR	1
Virginia Beach Hlth District	CLASSIFIED	NUTRITIONIST ASSOC	6
Virginia Beach Hlth District	CLASSIFIED	NUTRITIONIST ASST	3
Virginia Beach Hlth District	CLASSIFIED	NUTRITIONIST SR	3
Virginia Beach Hlth District	CLASSIFIED	NUTRITIONIST SUPV SR	1
Virginia Beach Hlth District	CLASSIFIED	OFFICE SVCS ASST	1
Virginia Beach Hlth District	CLASSIFIED	OFFICE SVCS SPEC	9
Virginia Beach Hlth District	CLASSIFIED	OFFICE SVCS SUPV	1
Virginia Beach Hlth District	CLASSIFIED	PH DENTIST A	1
Virginia Beach Hlth District	CLASSIFIED	PH NURSE	8
Virginia Beach Hlth District	CLASSIFIED	PH NURSE MGR SR	1
Virginia Beach Hlth District	CLASSIFIED	PH NURSE SR	1
Virginia Beach Hlth District	CLASSIFIED	PH NURSE SUPV	1
Virginia Beach Hlth District	CLASSIFIED	PH PHYSICIAN SUPV	1
Virginia Beach Hlth District	CLASSIFIED	PHARMACY ASST A	1
Virginia Beach Hlth District	CLASSIFIED	PROG SUP TECH	2
Virginia Beach Hlth District	CLASSIFIED	Prog Sup Tech Sr	1
Virginia Beach Hlth District	CLASSIFIED	PUBLIC RELATIONS COORD	1
Virginia Beach Hlth District	WAGE		7
Virginia Beach Hlth District	WAGE	BREASTFEEDING PEER COUNSELOR	1
Virginia Beach Hlth District	WAGE	NUTRITIONIST	1
Virginia Beach Hlth District	WAGE	NUTRITIONIST ASSOC	1

August 1, 2025

Virginia Beach Hlth District	WAGE	NUTRITIONIST ASST	1
Virginia Beach Hlth District	WAGE	OFFICE SVCS ASST	3
West Piedmont Hlth District			48
West Piedmont Hlth District	CLASSIFIED		45
West Piedmont Hlth District	CLASSIFIED	ACCOUNTANT	1
West Piedmont Hlth District	CLASSIFIED	BUSINESS MGR C	1
West Piedmont Hlth District	CLASSIFIED	COMMUNITY HEALTH WORKER	1
West Piedmont Hlth District	CLASSIFIED	ENV HEALTH MGR SR	1
West Piedmont Hlth District	CLASSIFIED	ENV HEALTH SPEC	2
West Piedmont Hlth District	CLASSIFIED	ENV HEALTH SPEC SR	4
West Piedmont Hlth District	CLASSIFIED	ENV HEALTH TECH SPEC	2
West Piedmont Hlth District	CLASSIFIED	EPIDEMIOLOGIST SR	1
West Piedmont Hlth District	CLASSIFIED	Fiscal Tech	1
West Piedmont Hlth District	CLASSIFIED	Health District Dir	1
West Piedmont Hlth District	CLASSIFIED	LOCAL HEALTH EMERG COORD	1
West Piedmont Hlth District	CLASSIFIED	NUTRITIONIST ASSOC	3
West Piedmont Hlth District	CLASSIFIED	NUTRITIONIST SUPV SR	1
West Piedmont Hlth District	CLASSIFIED	OFFICE SVCS ASST	4
West Piedmont Hlth District	CLASSIFIED	OFFICE SVCS SPEC	1
West Piedmont Hlth District	CLASSIFIED	OFFICE SVCS SUPV SR	1
West Piedmont Hlth District	CLASSIFIED	PH NURSE	2
West Piedmont Hlth District	CLASSIFIED	PH NURSE MGR SR	1
West Piedmont Hlth District	CLASSIFIED	PH NURSE SR	6
West Piedmont Hlth District	CLASSIFIED	PH NURSE SUPV	1
West Piedmont Hlth District	CLASSIFIED	POPULATION HEALTH MANAGER	1

August 1, 2025

West Piedmont Hlth District	CLASSIFIED	PRACTICAL NURSE A	2
West Piedmont Hlth District	CLASSIFIED	PROG SUP TECH	5
West Piedmont Hlth District	CLASSIFIED	Prog Sup Tech Sr	1
West Piedmont Hlth District	WAGE		3
West Piedmont Hlth District	WAGE	BREASTFEEDING PEER COUNSELOR	1
West Piedmont Hlth District	WAGE	CERT NURSE PRACTITIONER SR	1
West Piedmont Hlth District	WAGE	NUTRITIONIST ASST	1
Western Tidewater Hlth District			67
Western Tidewater Hlth District	CLASSIFIED		61
Western Tidewater Hlth District	CLASSIFIED	CERT NURSE PRACTITIONER SR	1
Western Tidewater Hlth District	CLASSIFIED	ENV HEALTH MGR SR	1
Western Tidewater Hlth District	CLASSIFIED	ENV HEALTH SPEC SR	9
Western Tidewater Hlth District	CLASSIFIED	ENV HEALTH SUPV	2
Western Tidewater Hlth District	CLASSIFIED	EPIDEMIOLOGIST SR	1
Western Tidewater Hlth District	CLASSIFIED	Fiscal Tech	4
Western Tidewater Hlth District	CLASSIFIED	Fiscal Tech Sr	2
Western Tidewater Hlth District	CLASSIFIED	Health District Dir	1
Western Tidewater Hlth District	CLASSIFIED	HEALTHCARE TECHNICIAN	1
Western Tidewater Hlth District	CLASSIFIED	HR ANALYST	1
Western Tidewater Hlth District	CLASSIFIED	LOCAL HEALTH EMERG COORD	1
Western Tidewater Hlth District	CLASSIFIED	MATERIAL MANAGEMENT TECH	1
Western Tidewater Hlth District	CLASSIFIED	MRC COORDINATOR	1
Western Tidewater Hlth District	CLASSIFIED	NURSING ASST	2
Western Tidewater Hlth District	CLASSIFIED	NUTRITIONIST ASSOC	1
Western Tidewater Hlth District	CLASSIFIED	NUTRITIONIST ASST	1

August 1, 2025

Western Tidewater Hlth District	CLASSIFIED	NUTRITIONIST SUPV SR	1
Western Tidewater Hlth District	CLASSIFIED	OFFICE SVCS SPEC	9
Western Tidewater Hlth District	CLASSIFIED	OFFICE SVCS SUPV SR	2
Western Tidewater Hlth District	CLASSIFIED	PH NURSE	11
Western Tidewater Hlth District	CLASSIFIED	PH NURSE MGR SR	1
Western Tidewater Hlth District	CLASSIFIED	PH NURSE SR	1
Western Tidewater Hlth District	CLASSIFIED	PH NURSE SUPV	3
Western Tidewater Hlth District	CLASSIFIED	PRACTICAL NURSE A	1
Western Tidewater Hlth District	CLASSIFIED	PROG SUP TECH	2
Western Tidewater Hlth District	WAGE		6
Western Tidewater Hlth District	WAGE	BREASTFEEDING PEER COUNSELOR	1
Western Tidewater Hlth District	WAGE	Fiscal Tech	2
Western Tidewater Hlth District	WAGE	NUTRITIONIST ASSOC	1
Western Tidewater Hlth District	WAGE	PH NURSE	1
Western Tidewater Hlth District	WAGE	PH NURSE CONSULT	1
Office of Budget Management			1
Office of Budget Management	CLASSIFIED		1
Office of Budget Management	CLASSIFIED	BUDGET ANALYST	1
Office of the Chief Medical Examiner			123
Office of the Chief Medical Examiner	CLASSIFIED		98
Office of the Chief Medical Examiner	CLASSIFIED	ADMINISTRATIVE DEPUTY	2
Office of the Chief Medical Examiner	CLASSIFIED	ADMV STAFF SPEC	1
Office of the Chief Medical Examiner	CLASSIFIED	ANATOMICAL EMBALMING LAB SUPV	1
Office of the Chief Medical Examiner	CLASSIFIED	ANATOMICAL PROG SUPV	1
Office of the Chief Medical Examiner	CLASSIFIED	ANATOMICAL PROGRAM DIRECTOR	1

August 1, 2025

Office of the Chief Medical Examiner	CLASSIFIED	Asst Chief Med Examiner	14
Office of the Chief Medical Examiner	CLASSIFIED	CHIEF MED EXAMINER	1
Office of the Chief Medical Examiner	CLASSIFIED	CHIEF MEDICOLEGAL DEATH INV	1
Office of the Chief Medical Examiner	CLASSIFIED	DATA ABTRACTOR	2
Office of the Chief Medical Examiner	CLASSIFIED	DEATH PREVENTION DIV DIR	1
Office of the Chief Medical Examiner	CLASSIFIED	District Medicolegal Admin	3
Office of the Chief Medical Examiner	CLASSIFIED	EMBALMING SUPPORT TECH	1
Office of the Chief Medical Examiner	CLASSIFIED	EMERG SVCS MGR	1
Office of the Chief Medical Examiner	CLASSIFIED	EPIDEMIOLOGIST LEAD	1
Office of the Chief Medical Examiner	CLASSIFIED	FAMILY VIOLENCE PROG SUPV	1
Office of the Chief Medical Examiner	CLASSIFIED	FORENSIC AUTOPSY SVCS SUPV	4
Office of the Chief Medical Examiner	CLASSIFIED	FORENSIC AUTOPSY TECH	9
Office of the Chief Medical Examiner	CLASSIFIED	FORENSIC AUTOPSY TECH SR	2
Office of the Chief Medical Examiner	CLASSIFIED	FORENSIC HISTOLOGIST	1
Office of the Chief Medical Examiner	CLASSIFIED	FORENSIC PATHOLOGISTS ASST	2
Office of the Chief Medical Examiner	CLASSIFIED	FORENSIC SUPPORT ASST	4
Office of the Chief Medical Examiner	CLASSIFIED	LEAD MEDICOLEGAL ADMIN SPEC	4
Office of the Chief Medical Examiner	CLASSIFIED	LONG TERM UNIDENTIFIED COORD	1
Office of the Chief Medical Examiner	CLASSIFIED	MATERNAL MORTALITY DATA COORD	1
Office of the Chief Medical Examiner	CLASSIFIED	MATERNAL MORTALITY PROG SUPV	1
Office of the Chief Medical Examiner	CLASSIFIED	MEDICOLEGAL ADMIN SPEC	3
Office of the Chief Medical Examiner	CLASSIFIED	MEDICOLEGAL ADMIN SPEC SR	2
Office of the Chief Medical Examiner	CLASSIFIED	MEDICOLEGAL DEATH INVEST I	16
Office of the Chief Medical Examiner	CLASSIFIED	MEDICOLEGAL DEATH INVEST II	6
Office of the Chief Medical Examiner	CLASSIFIED	MEDICOLEGAL DEATH INVEST III	1

August 1, 2025

Office of the Chief Medical Examiner	CLASSIFIED	MEDICOLEGAL DEATH INVEST SUPV	4
Office of the Chief Medical Examiner	CLASSIFIED	MEDICOLEGAL SECRETARY SR	3
Office of the Chief Medical Examiner	CLASSIFIED	SENIOR DATA ABTRACTOR	1
Office of the Chief Medical Examiner	CLASSIFIED	VIOLENT DEATH DATA COORD	1
Office of the Chief Medical Examiner	WAGE		25
Office of the Chief Medical Examiner	WAGE	FORENSIC AUTOPSY TECH	2
Office of the Chief Medical Examiner	WAGE	FORENSIC HISTOLOGIST	2
Office of the Chief Medical Examiner	WAGE	FORENSIC SUPPORT ASST	6
Office of the Chief Medical Examiner	WAGE	HUMAN SVCS PROG SPEC	1
Office of the Chief Medical Examiner	WAGE	MEDICOLEGAL ADMIN SPEC	3
Office of the Chief Medical Examiner	WAGE	MEDICOLEGAL DEATH INVEST I	5
Office of the Chief Medical Examiner	WAGE	PROG SUP TECH	2
Office of the Chief Medical Examiner	WAGE	STATISTICAL ANALYST	4
Office of the Commissioner			67
Office of the Commissioner	CLASSIFIED		28
Office of the Commissioner	CLASSIFIED	ASST CHIEF FINANCIAL OFFICER	1
Office of the Commissioner	CLASSIFIED	ASST DEP COMM FOR PHP PROGRAMS	1
Office of the Commissioner	CLASSIFIED	ASST DEPUTY COMM CHS	1
Office of the Commissioner	CLASSIFIED	AT WILL - POLICY ANALYST	1
Office of the Commissioner	CLASSIFIED	AT WILL- CHIEF OPS OFFICER	1
Office of the Commissioner	CLASSIFIED	CHIEF FINANCIAL OFFICER	1
Office of the Commissioner	CLASSIFIED	CHIEF INFO SECURITY OFFICER	1
Office of the Commissioner	CLASSIFIED	DEPUTY COMM GOVT & REG AFFAIRS	1
Office of the Commissioner	CLASSIFIED	DEPUTY COMM POP HEALTH & PREP	1

August 1, 2025

Office of the Commissioner	CLASSIFIED	DIR OF COMMUNITY RELATIONS	1
Office of the Commissioner	CLASSIFIED	EXECUTIVE ASSISTANT	2
Office of the Commissioner	CLASSIFIED	HUMAN SVCS PROG COORD	1
Office of the Commissioner	CLASSIFIED	INTERNSHIP COORDINATOR	1
Office of the Commissioner	CLASSIFIED	IT DIVISION OPS OFFICER	1
Office of the Commissioner	CLASSIFIED	LANGUAGE ACCESS COORD	1
Office of the Commissioner	CLASSIFIED	LEGISLATIVE & REGULATORY COORD	1
Office of the Commissioner	CLASSIFIED	POLICY ANALYST SR	1
Office of the Commissioner	CLASSIFIED	PROCESS IMPROVEMENT ANALYST	1
Office of the Commissioner	CLASSIFIED	PROG SUP TECH	1
Office of the Commissioner	CLASSIFIED	SENIOR EXECUTIVE ASSISTANT	1
Office of the Commissioner	CLASSIFIED	SR ASST ATTORNEY GENERAL II	1
Office of the Commissioner	CLASSIFIED	SR IT PROCUREMENT OFFICER	1
Office of the Commissioner	CLASSIFIED	State Health Comm	1
Office of the Commissioner	CLASSIFIED	STATE HEALTH DEPUTY COMM MD	1
Office of the Commissioner	CLASSIFIED	TRAINING AND DEVEL COORD SR	1
Office of the Commissioner	CLASSIFIED	WORKFORCE COLLAB COORD	1
Office of the Commissioner	CLASSIFIED	WORKFORCE DEVEL & ENGMNT DIR	1
Office of the Commissioner	WAGE		39
Office of the Commissioner	WAGE	AGENCY MANAGEMENT ANALYST SR	1
Office of the Commissioner	WAGE	INTERN	37
Office of the Commissioner	WAGE	Policy Analyst	1
Community Health Services			20
Community Health Services	CLASSIFIED		17
Community Health Services	CLASSIFIED	ACCOUNTANT SR	1

August 1, 2025

Community Health Services	CLASSIFIED	CHS BUSINESS PROCESS PARTNER	1
Community Health Services	CLASSIFIED	CHS MEDICAL OFFICER	3
Community Health Services	CLASSIFIED	DIR PRCS & EVAL OVERSIGHT CHS	1
Community Health Services	CLASSIFIED	DIRECTOR BUSINESS PROCESS-CHS	1
Community Health Services	CLASSIFIED	ELIGIBILITY & ACCTS REC SPEC	1
Community Health Services	CLASSIFIED	HEALTHCARE REIMB MGR SR	1
Community Health Services	CLASSIFIED	MEDICAL DIRECTOR-CHS	1
Community Health Services	CLASSIFIED	PH NURSE CLINICAL PROG MGR	1
Community Health Services	CLASSIFIED	PH NURSE DIR	1
Community Health Services	CLASSIFIED	PRE-ADMIN SCREENG PROG MGR	1
Community Health Services	CLASSIFIED	REGIONAL HR BUSINESS PARTNER	4
Community Health Services	WAGE		3
Community Health Services	WAGE	CHS MEDICAL OFFICER	1
Community Health Services	WAGE	EXECUTIVE ADVISOR	2
Office of Communications			12
Office of Communications	CLASSIFIED		12
Office of Communications	CLASSIFIED	COMMUNICATIONS SPEC	1
Office of Communications	CLASSIFIED	DEP DIGITAL COMMUNICATIONS DIR	1
Office of Communications	CLASSIFIED	DIRECTOR OF COMMUNICATIONS	1
Office of Communications	CLASSIFIED	FOIA ANALYST	1
Office of Communications	CLASSIFIED	PUBLIC RELATIONS COORD	5
Office of Communications	CLASSIFIED	Public Relations Spec	1
Office of Communications	CLASSIFIED	RISK COMMUNICATIONS MANAGER	1
Office of Communications	CLASSIFIED	SENIOR GRAPHIC DESIGNER	1
Office of Drinking Water			110

August 1, 2025

Office of Drinking Water	CLASSIFIED		104
Office of Drinking Water	CLASSIFIED	ACCOUNTANT SR	1
Office of Drinking Water	CLASSIFIED	ADM STAFF ASST	7
		AGENCY MANAGEMENT LEAD	
Office of Drinking Water	CLASSIFIED	ANALYST	2
Office of Drinking Water	CLASSIFIED	BUSINESS OPERATIONS MGR	1
Office of Drinking Water	CLASSIFIED	EMERG SVCS COORD	1
Office of Drinking Water	CLASSIFIED	ENV ENG	2
Office of Drinking Water	CLASSIFIED	ENV ENG CONSUL	6
Office of Drinking Water	CLASSIFIED	ENV ENG SR	19
Office of Drinking Water	CLASSIFIED	ENV HEALTH ASST DIR	1
Office of Drinking Water	CLASSIFIED	ENV HEALTH COORD	1
Office of Drinking Water	CLASSIFIED	Env Health Dir	1
Office of Drinking Water	CLASSIFIED	ENV HEALTH SPEC CONSUL	8
Office of Drinking Water	CLASSIFIED	ENV HEALTH SPEC SR	5
Office of Drinking Water	CLASSIFIED	ENV HEALTH SUPV	3
Office of Drinking Water	CLASSIFIED	ENV HEALTH TECH SPEC	11
Office of Drinking Water	CLASSIFIED	ENV SPEC SR PUBLIC WATER	11
Office of Drinking Water	CLASSIFIED	ENV TECH SVCS ADMINISTRATOR	2
Office of Drinking Water	CLASSIFIED	Fiscal Tech Sr	1
Office of Drinking Water	CLASSIFIED	HEARING & LEGAL SVCS OFFCR III	1
Office of Drinking Water	CLASSIFIED	HR BUSINESS PARTNER	1
Office of Drinking Water	CLASSIFIED	HUMAN SVCS PROG CONSULT	1
Office of Drinking Water	CLASSIFIED	HUMAN SVCS PROG COORD	4
Office of Drinking Water	CLASSIFIED	HUMAN SVCS PROG MGR	1

August 1, 2025

Office of Drinking Water	CLASSIFIED	ODW LEGAL SVCS & HEARINGS OFF	1
Office of Drinking Water	CLASSIFIED	OFFICE SVCS SPEC	3
Office of Drinking Water	CLASSIFIED	PH ENG DIVISION DIR	1
Office of Drinking Water	CLASSIFIED	PH ENG REG DIR	6
Office of Drinking Water	CLASSIFIED	STATISTICAL ANALYST INTERMED	1
Office of Drinking Water	CLASSIFIED	TRAINING AND DEVEL MGR	1
Office of Drinking Water	WAGE		6
Office of Drinking Water	WAGE	ENV HEALTH ASSOC	1
Office of Drinking Water	WAGE	OFFICE SVCS ASST	1
Office of Drinking Water	WAGE	OFFICE SVCS SPEC	2
Office of Drinking Water	WAGE	PROG SUP TECH	1
Office of Drinking Water	WAGE	Prog Sup Tech Sr	1
Office of Emergency Medical Services			32
Office of Emergency Medical Services	CLASSIFIED		32
Office of Emergency Medical Services	CLASSIFIED	ADMV STAFF SPEC	1
Office of Emergency Medical Services	CLASSIFIED	BUSINESS OPERATIONS MGR	1
Office of Emergency Medical Services	CLASSIFIED	DEPUTY DIRECTOR OF EMS	1
Office of Emergency Medical Services	CLASSIFIED	DIRECTOR OF EMERG MEDICAL SVCS	1
Office of Emergency Medical Services	CLASSIFIED	EMERG SVCS COORD	4
Office of Emergency Medical Services	CLASSIFIED	EMERG SVCS MGR	4
Office of Emergency Medical Services	CLASSIFIED	EPIDEMIOLOGIST SR	1
Office of Emergency Medical Services	CLASSIFIED	FISCAL TECH 3B	1
Office of Emergency Medical Services	CLASSIFIED	GRANTS SPEC	1
Office of Emergency Medical Services	CLASSIFIED	HUMAN SVCS PROG COORD	3
Office of Emergency Medical Services	CLASSIFIED	HUMAN SVCS PROG SPEC	2

August 1, 2025

Office of Emergency Medical Services	CLASSIFIED	HUMAN SVCS PROG SPEC-INSPECTOR	6
Office of Emergency Medical Services	CLASSIFIED	HUMAN SVCS PROG SUPV	1
Office of Emergency Medical Services	CLASSIFIED	HUMAN SVCS SUPV-FIELD	1
Office of Emergency Medical Services	CLASSIFIED	Policy Analyst	1
Office of Emergency Medical Services	CLASSIFIED	POLICY ANALYST SR	1
Office of Emergency Medical Services	CLASSIFIED	REGIONAL HEALTH EMERG COORD	1
Office of Emergency Medical Services	CLASSIFIED	TRAUMA & CRITICAL CARE MANAGER	1
Office of Emergency Preparedness			34
Office of Emergency Preparedness	CLASSIFIED		33
Office of Emergency Preparedness	CLASSIFIED	ACCOUNTANT	1
Office of Emergency Preparedness	CLASSIFIED	ASST DIR EMERGENCY PREP	1
Office of Emergency Preparedness	CLASSIFIED	BUSINESS MGR B	1
Office of Emergency Preparedness	CLASSIFIED	CALL CENTER MANAGER	1
Office of Emergency Preparedness	CLASSIFIED	COMMUNITY SVCS DIR	1
Office of Emergency Preparedness	CLASSIFIED	DIRECTOR OF EMERG PREPAREDNESS	1
Office of Emergency Preparedness	CLASSIFIED	DISTRICT IT ANALYST SR	1
Office of Emergency Preparedness	CLASSIFIED	EMERG SVCS PLANNER	1
Office of Emergency Preparedness	CLASSIFIED	HR ANALYST	1
Office of Emergency Preparedness	CLASSIFIED	HUMAN SVCS PROG CONSULT	1
Office of Emergency Preparedness	CLASSIFIED	HUMAN SVCS PROG MGR SR	1
Office of Emergency Preparedness	CLASSIFIED	HUMAN SVCS PROG SPEC	1
Office of Emergency Preparedness	CLASSIFIED	INSTRUCTIONAL DESIGN CONSULT	1
Office of Emergency Preparedness	CLASSIFIED	MRC PROGRAM ADMINISTRATOR	1
Office of Emergency Preparedness	CLASSIFIED	PH INFORMATICS PROGRAM SUPV	1

August 1, 2025

Office of Emergency Preparedness	CLASSIFIED	PH PREPAREDNESS SYSTEMS MGR	1
Office of Emergency Preparedness	CLASSIFIED	REG TRAINING & DEVELOP CONSULT	3
Office of Emergency Preparedness	CLASSIFIED	REGIONAL HEALTH EMERG COORD	5
Office of Emergency Preparedness	CLASSIFIED	REGIONAL MRC COORDINATOR	4
Office of Emergency Preparedness	CLASSIFIED	STATE MRC COORDINATOR	1
Office of Emergency Preparedness	CLASSIFIED	TECHNICAL INST SUPV	1
Office of Emergency Preparedness	CLASSIFIED	TRAINING AND DEVEL COORD SR	3
Office of Emergency Preparedness	WAGE		1
Office of Emergency Preparedness	WAGE	HUMAN SVCS PROG COORD	1
Office of Environmental Health			66
Office of Environmental Health	CLASSIFIED		62
Office of Environmental Health	CLASSIFIED	ADM STAFF ASST	2
		AGENCY MANAGEMENT LEAD	
Office of Environmental Health	CLASSIFIED	ANALYST	4
Office of Environmental Health	CLASSIFIED	BUSINESS OPERATIONS MGR	1
Office of Environmental Health	CLASSIFIED	ENV ENG CONSUL	2
Office of Environmental Health	CLASSIFIED	ENV HEALTH ASST DIR	4
Office of Environmental Health	CLASSIFIED	ENV HEALTH COMPL & ENFORC SPEC	1
Office of Environmental Health	CLASSIFIED	ENV HEALTH COORD	18
Office of Environmental Health	CLASSIFIED	Env Health Dir	1
Office of Environmental Health	CLASSIFIED	Env Health Mgr	4
Office of Environmental Health	CLASSIFIED	ENV HEALTH SPEC CONSUL	1
Office of Environmental Health	CLASSIFIED	ENV HEALTH SPEC SR	8
Office of Environmental Health	CLASSIFIED	ENV HEALTH SUPV	1
Office of Environmental Health	CLASSIFIED	ENV HEALTH TECH SPEC	1

August 1, 2025

Office of Environmental Health	CLASSIFIED	ENV HLTH HEARINGS LEGAL OFFCR	1
Office of Environmental Health	CLASSIFIED	ENV TECHNICAL SERVICES MGR	1
Office of Environmental Health	CLASSIFIED	HEALTH EDUCATOR SR	1
Office of Environmental Health	CLASSIFIED	HEARINGS OFFICER	1
Office of Environmental Health	CLASSIFIED	HUMAN SVCS PROG SPEC	1
Office of Environmental Health	CLASSIFIED	LABORATORY SPEC SR	5
Office of Environmental Health	CLASSIFIED	MARINE SCIENTIST SR	1
Office of Environmental Health	CLASSIFIED	MARINE SCIENTIST SUPERVISOR	1
Office of Environmental Health	CLASSIFIED	Prog Sup Tech Sr	1
Office of Environmental Health	CLASSIFIED	Toxicologist	1
Office of Environmental Health	WAGE		4
Office of Environmental Health	WAGE	Bed And Uphol Furn Insp	2
Office of Environmental Health	WAGE	ENV HEALTH ASSOC	1
Office of Environmental Health	WAGE	OFFICE SVCS ASST	1
Office of Epidemiology			220
Office of Epidemiology	CLASSIFIED		218
Office of Epidemiology	CLASSIFIED	ACCOUNTANT SR	2
Office of Epidemiology	CLASSIFIED	Accounting Mgr A	1
Office of Epidemiology	CLASSIFIED	ADMINISTRATIVE DEPUTY	1
Office of Epidemiology	CLASSIFIED	ADMV STAFF SPEC	3
Office of Epidemiology	CLASSIFIED	ASSOC COMM & DIR OEPI	1
Office of Epidemiology	CLASSIFIED	Business Mgr A	1
Office of Epidemiology	CLASSIFIED	BUYER	2
Office of Epidemiology	CLASSIFIED	BUYER SR	1
Office of Epidemiology	CLASSIFIED	ENTOMOLOGIST	1

August 1, 2025

Office of Epidemiology	CLASSIFIED	EPIDEMIOLOGIST	6
Office of Epidemiology	CLASSIFIED	EPIDEMIOLOGIST LEAD	17
Office of Epidemiology	CLASSIFIED	EPIDEMIOLOGIST MID-LEVEL	24
Office of Epidemiology	CLASSIFIED	EPIDEMIOLOGIST SR	2
Office of Epidemiology	CLASSIFIED	EPIDEMIOLOGY PROG MGR	4
Office of Epidemiology	CLASSIFIED	HUMAN SVCS MGR-FIELD	4
Office of Epidemiology	CLASSIFIED	HUMAN SVCS PROG CONSULT	21
Office of Epidemiology	CLASSIFIED	HUMAN SVCS PROG COORD	27
Office of Epidemiology	CLASSIFIED	HUMAN SVCS PROG DIR	4
Office of Epidemiology	CLASSIFIED	HUMAN SVCS PROG MGR	8
Office of Epidemiology	CLASSIFIED	HUMAN SVCS PROG MGR SR	4
Office of Epidemiology	CLASSIFIED	HUMAN SVCS PROG SPEC	29
Office of Epidemiology	CLASSIFIED	HUMAN SVCS PROG SPEC- INSPECTOR	4
Office of Epidemiology	CLASSIFIED	HUMAN SVCS PROG SUPV	6
Office of Epidemiology	CLASSIFIED	MED RECORDS TECH SR	1
Office of Epidemiology	CLASSIFIED	OFFICE SVCS SPEC	4
Office of Epidemiology	CLASSIFIED	PH INFORMATICS DIVISION DIR	1
Office of Epidemiology	CLASSIFIED	PH INFORMATICS MANAGER	3
Office of Epidemiology	CLASSIFIED	PH INFORMATICS SPEC LEAD	5
Office of Epidemiology	CLASSIFIED	PH INFORMATICS SPECIALIST	1
Office of Epidemiology	CLASSIFIED	PH NURSE CONSULT	1
Office of Epidemiology	CLASSIFIED	PH NURSE MGR SR	1
Office of Epidemiology	CLASSIFIED	PH NURSE PROG SUPV	2
Office of Epidemiology	CLASSIFIED	PH VETERINARIAN	1

August 1, 2025

Office of Epidemiology	CLASSIFIED	PHARM REIMBURSEMENT TECH	1
Office of Epidemiology	CLASSIFIED	PHARMACIST	4
Office of Epidemiology	CLASSIFIED	PHARMACY ASST A	2
Office of Epidemiology	CLASSIFIED	PHARMACY COMPLIANCE OFFICER	1
Office of Epidemiology	CLASSIFIED	PHARMACY MGR	1
Office of Epidemiology	CLASSIFIED	PHARMACY PARTNER PROG MGR	1
Office of Epidemiology	CLASSIFIED	Pharmacy Supv	1
Office of Epidemiology	CLASSIFIED	POLICY ANALYST SR	1
Office of Epidemiology	CLASSIFIED	PROG SUP TECH	1
Office of Epidemiology	CLASSIFIED	Prog Sup Tech Sr	4
Office of Epidemiology	CLASSIFIED	PUBLIC RELATIONS COORD	1
Office of Epidemiology	CLASSIFIED	RYAN WHITE FISCAL GRANTS MGR	1
Office of Epidemiology	CLASSIFIED	STATISTICAL ANALYST	1
Office of Epidemiology	CLASSIFIED	Storekeeper	1
Office of Epidemiology	CLASSIFIED	STOREKEEPER MANAGER SENIOR	1
Office of Epidemiology	CLASSIFIED	Storekeeper Sr	2
Office of Epidemiology	CLASSIFIED	VETERINARY EPIDEMIOLOGIST	1
Office of Epidemiology	WAGE		2
Office of Epidemiology	WAGE	BUYER	1
Office of Epidemiology	WAGE	Prog Sup Tech Sr	1
Office of Family Health Services			181
Office of Family Health Services	CLASSIFIED		164
Office of Family Health Services	CLASSIFIED	ACCOUNTANT	3
Office of Family Health Services	CLASSIFIED	ADMV STAFF SPEC	1

August 1, 2025

Office of Family Health Services	CLASSIFIED	AGENCY MANAGEMENT LEAD ANALYST	1
Office of Family Health Services	CLASSIFIED	ASSOC COMM & DIR OFHS	1
Office of Family Health Services	CLASSIFIED	BUSINESS ANALYST	2
Office of Family Health Services	CLASSIFIED	BUYER	1
Office of Family Health Services	CLASSIFIED	CHI MANAGER	1
Office of Family Health Services	CLASSIFIED	DENTAL HYGIENIST	5
Office of Family Health Services	CLASSIFIED	DENTAL HYGIENIST/TECH SPEC	3
Office of Family Health Services	CLASSIFIED	EPIDEMIOLOGIST LEAD	3
Office of Family Health Services	CLASSIFIED	EPIDEMIOLOGIST MID-LEVEL	11
Office of Family Health Services	CLASSIFIED	EPIDEMIOLOGIST SR	13
Office of Family Health Services	CLASSIFIED	EPIDEMIOLOGY PROG MGR	2
Office of Family Health Services	CLASSIFIED	EXECUTIVE SECRETARY	2
Office of Family Health Services	CLASSIFIED	FISCAL COMPLIANCE AUDITOR	1
Office of Family Health Services	CLASSIFIED	FISCAL GRANTS COORD	1
Office of Family Health Services	CLASSIFIED	FISCAL GRANTS MGR	2
Office of Family Health Services	CLASSIFIED	GRAPHIC DESIGNER	1
Office of Family Health Services	CLASSIFIED	HUMAN SVCS PROG CONSULT	9
Office of Family Health Services	CLASSIFIED	HUMAN SVCS PROG COORD	46
Office of Family Health Services	CLASSIFIED	HUMAN SVCS PROG DIR	4
Office of Family Health Services	CLASSIFIED	HUMAN SVCS PROG MGR	2
Office of Family Health Services	CLASSIFIED	HUMAN SVCS PROG SPEC	5
Office of Family Health Services	CLASSIFIED	HUMAN SVCS PROG SUPV	11
Office of Family Health Services	CLASSIFIED	MED RECORDS TECH	1
Office of Family Health Services	CLASSIFIED	MED RECORDS TECH SR	5

August 1, 2025

Office of Family Health Services	CLASSIFIED	OFFICE SVCS SPEC	1
Office of Family Health Services	CLASSIFIED	PH NURSE	4
Office of Family Health Services	CLASSIFIED	PH NURSE PROG SUPV	1
Office of Family Health Services	CLASSIFIED	PH NURSE SR	6
Office of Family Health Services	CLASSIFIED	Policy Analyst	1
Office of Family Health Services	CLASSIFIED	PROG SUP TECH	8
Office of Family Health Services	CLASSIFIED	Prog Sup Tech Sr	4
Office of Family Health Services	CLASSIFIED	TRAINING AND DEVEL COORD	1
Office of Family Health Services	CLASSIFIED	TRAINING AND DEVEL COORD SR	1
Office of Family Health Services	WAGE		17
Office of Family Health Services	WAGE	DENTAL ASST	1
Office of Family Health Services	WAGE	DENTAL ASST B	4
Office of Family Health Services	WAGE	DENTAL HYGIENIST	1
Office of Family Health Services	WAGE	HUMAN SVCS PROG CONSULT	1
Office of Family Health Services	WAGE	HUMAN SVCS PROG COORD	4
Office of Family Health Services	WAGE	HUMAN SVCS PROG SPEC	1
Office of Family Health Services	WAGE	MED RECORDS TECH SR	1
Office of Family Health Services	WAGE	Nutritionist Supv	1
Office of Family Health Services	WAGE	PH DENTIST B	1
Office of Family Health Services	WAGE	Prog Sup Tech Sr	2
Office of Financial Management			38
Office of Financial Management	CLASSIFIED		38
Office of Financial Management	CLASSIFIED	ACCOUNTANT	6
Office of Financial Management	CLASSIFIED	ACCOUNTANT SR	5
Office of Financial Management	CLASSIFIED	Accounting Mgr A	2

August 1, 2025

Office of Financial Management	CLASSIFIED	Accounts Payable Accountant	5
Office of Financial Management	CLASSIFIED	BUDGET ANALYST	1
Office of Financial Management	CLASSIFIED	BUDGET ANALYST SR	1
Office of Financial Management	CLASSIFIED	BUDGET MGR	1
Office of Financial Management	CLASSIFIED	Budget Mgr Sr	1
Office of Financial Management	CLASSIFIED	BUSINESS OPERATIONS MGR	1
Office of Financial Management	CLASSIFIED	DEPUTY DIR OF AP AND PAYROLL	1
Office of Financial Management	CLASSIFIED	DIR OF FIN MANAGEMENT	1
Office of Financial Management	CLASSIFIED	FISCAL GRANTS MGR	1
Office of Financial Management	CLASSIFIED	Fiscal Tech	1
Office of Financial Management	CLASSIFIED	Fiscal Tech Sr	1
Office of Financial Management	CLASSIFIED	GRANTS ADMINISTRATOR	1
Office of Financial Management	CLASSIFIED	OFFICE SVCS ASST	1
Office of Financial Management	CLASSIFIED	PAYROLL & BENEFITS ACCOUNTANT	5
Office of Financial Management	CLASSIFIED	Payroll Manager	1
Office of Financial Management	CLASSIFIED	PAYROLL SUPERVISOR	1
Office of Financial Management	CLASSIFIED	Policy Analyst	1
Office of Grants Administration			6
Office of Grants Administration	CLASSIFIED		6
Office of Grants Administration	CLASSIFIED	ACCOUNTANT SR	2
Office of Grants Administration	CLASSIFIED	AGENCY GRANTS MANAGER	1
Office of Grants Administration	CLASSIFIED	DEPUTY DIRECTOR OF GRANTS	1
Office of Grants Administration	CLASSIFIED	DIRECTOR OF GRANTS ADMIN	1
Office of Grants Administration	CLASSIFIED	FISCAL GRANTS COORD	1
Office of Health Equity			12

August 1, 2025

Office of Health Equity	CLASSIFIED		11
Office of Health Equity	CLASSIFIED	EPIDEMIOLOGIST LEAD	1
Office of Health Equity	CLASSIFIED	EPIDEMIOLOGIST SR	1
Office of Health Equity	CLASSIFIED	HR ANALYST	1
Office of Health Equity	CLASSIFIED	HUMAN SVCS PROG COORD	3
Office of Health Equity	CLASSIFIED	HUMAN SVCS PROG DIR SR	1
Office of Health Equity	CLASSIFIED	HUMAN SVCS PROG SPEC	2
Office of Health Equity	CLASSIFIED	HUMAN SVCS PROG SUPV	1
Office of Health Equity	CLASSIFIED	Public Relations Spec	1
Office of Health Equity	WAGE		1
Office of Health Equity	WAGE	Fiscal Tech	1
Office of Human Resources			46
Office of Human Resources	CLASSIFIED		41
Office of Human Resources	CLASSIFIED	ADM STAFF ASST	1
Office of Human Resources	CLASSIFIED	BACKGROUND INVESTIGATION SUP	1
Office of Human Resources	CLASSIFIED	BENEFITS ADMINISTRATOR	1
Office of Human Resources	CLASSIFIED	BENEFITS MANAGER	1
Office of Human Resources	CLASSIFIED	CLIN OCC HLTH & SAFTY SPEC RN	1
Office of Human Resources	CLASSIFIED	DEPUTY DIRECTOR OF HR	2
Office of Human Resources	CLASSIFIED	EEO & EMPLOYEE RELATIONS SPEC	2
Office of Human Resources	CLASSIFIED	EMPLOYEE RELATIONS COORD	2
Office of Human Resources	CLASSIFIED	EMPLOYEE RELATIONS MGR	1
Office of Human Resources	CLASSIFIED	HR ANALYST	8
Office of Human Resources	CLASSIFIED	HR BUSINESS PARTNER	3
Office of Human Resources	CLASSIFIED	HR COMPLIANCE MANAGER	1

August 1, 2025

Office of Human Resources	CLASSIFIED	HRIS SUPPORT SPECIALIST	2
Office of Human Resources	CLASSIFIED	HUMAN RESOURCE COORDINATOR	1
Office of Human Resources	CLASSIFIED	Human Resource Dir Sr	1
Office of Human Resources	CLASSIFIED	LEAVE COORDINATOR	2
Office of Human Resources	CLASSIFIED	OCCUPATNL HEALTH & SAFETY SPEC	1
Office of Human Resources	CLASSIFIED	OSHA PROGRAM MANAGER	1
Office of Human Resources	CLASSIFIED	POLICY ANALYST SR	1
Office of Human Resources	CLASSIFIED	RECRUITER	4
Office of Human Resources	CLASSIFIED	REG TRAINING & DEVELOP SUPV	1
Office of Human Resources	CLASSIFIED	SENIOR LEAVE COORDINATOR	1
Office of Human Resources	CLASSIFIED	TALENT ACQUISITION MANAGER	1
Office of Human Resources	CLASSIFIED	TRAINING & DEVEL CONSULTANT	1
Office of Human Resources	WAGE		5
Office of Human Resources	WAGE	ASSISTANT LEAVE COORDINATOR	1
Office of Human Resources	WAGE	BACKGROUND INVESTIGATOR	2
Office of Human Resources	WAGE	HUMAN RESOURCE ASST	2
Office of Information Management			48
Office of Information Management	CLASSIFIED		48
Office of Information Management	CLASSIFIED	ACCOUNTANT	1
Office of Information Management	CLASSIFIED	AGENCY IT RESOURCE	1
		AGENCY TELECOMMUNICATIONS	
Office of Information Management	CLASSIFIED	LEAD	2
Office of Information Management	CLASSIFIED	APPLICATIONS Q A ENG	2
Office of Information Management	CLASSIFIED	BUS ENBL AND INNOV SOLS DIR	1
Office of Information Management	CLASSIFIED	BUSINESS ANALYST	1

August 1, 2025

Office of Information Management	CLASSIFIED	BUSINESS OPERATIONS MGR	1
Office of Information Management	CLASSIFIED	CHIEF INFORMATION OFFICER	1
Office of Information Management	CLASSIFIED	DATA WAREHOUSE DEV	3
Office of Information Management	CLASSIFIED	DIR PUBLIC HEALTH INFORMATICS	1
Office of Information Management	CLASSIFIED	DIRECTOR OF DATA & QUALITY	1
Office of Information Management	CLASSIFIED	ENTERPRISE COLLAB ARCHITECT	1
Office of Information Management	CLASSIFIED	HR DP User Liaison	2
Office of Information Management	CLASSIFIED	INFORMATION SECURITY OFFICER	1
Office of Information Management	CLASSIFIED	IT ASSET MANAGER	1
Office of Information Management	CLASSIFIED	IT PORTFOLIO MANAGER	1
Office of Information Management	CLASSIFIED	IT PROJECT MANAGER	3
Office of Information Management	CLASSIFIED	IT SERVICES SUPPORT MANAGER	1
Office of Information Management	CLASSIFIED	IT SERVICES SUPPORT SPECIALIST	1
Office of Information Management	CLASSIFIED	PROGRAMMER ANALYST SR	4
Office of Information Management	CLASSIFIED	PROGRAMMER/ANALYST	1
Office of Information Management	CLASSIFIED	SOLUTIONS ENG & ARCHITECT	2
Office of Information Management	CLASSIFIED	SOLUTIONS ENG & ARCHITECT MGR	1
Office of Information Management	CLASSIFIED	SR INTEROPERABILITY ARCHITECT	1
Office of Information Management	CLASSIFIED	SR SOLUTIONS ENG & ARCHITECT	1
Office of Information Management	CLASSIFIED	SYSTEMS ANALYST	9
Office of Information Management	CLASSIFIED	SYSTEMS DEVEL MGR	1
Office of Information Management	CLASSIFIED	TECHNICAL PROJECT MGR	2
Office of Internal Audit			10
Office of Internal Audit	CLASSIFIED		9
Office of Internal Audit	CLASSIFIED	ASSISTANT AUDIT DIR-INTERNAL	1

August 1, 2025

Office of Internal Audit	CLASSIFIED	AUDIT DIR-INTERNAL	1
Office of Internal Audit	CLASSIFIED	AUDITOR SR-INTERNAL	3
Office of Internal Audit	CLASSIFIED	IT AUDITOR	1
Office of Internal Audit	CLASSIFIED	SENIOR IT AUDITOR	1
Office of Internal Audit	CLASSIFIED	STAFF AUDITOR	2
Office of Internal Audit	WAGE		1
Office of Internal Audit	WAGE	Executive Secretary Sr	1
Office of Licensure & Certification			82
Office of Licensure & Certification	CLASSIFIED		76
Office of Licensure & Certification	CLASSIFIED	ADJUDICATION & PRIVACY OFFICER	1
Office of Licensure & Certification	CLASSIFIED	BUSINESS OPERATIONS MGR	1
Office of Licensure & Certification	CLASSIFIED	COOP AGREEMENT COMPL ANALYST	1
Office of Licensure & Certification	CLASSIFIED	Executive Secretary Sr	1
Office of Licensure & Certification	CLASSIFIED	HEALTH CARE COMPLIANCE INSPECT	2
Office of Licensure & Certification	CLASSIFIED	HUMAN SVCS PROG CONSULT	1
Office of Licensure & Certification	CLASSIFIED	HUMAN SVCS PROG COORD	1
Office of Licensure & Certification	CLASSIFIED	HUMAN SVCS PROG DIR	1
Office of Licensure & Certification	CLASSIFIED	HUMAN SVCS PROG DIR SR	1
Office of Licensure & Certification	CLASSIFIED	HUMAN SVCS PROG MGR	1
Office of Licensure & Certification	CLASSIFIED	LICENSURE/CERTIF PROG MGR	1
Office of Licensure & Certification	CLASSIFIED	MED FACILITIES INSP SUPV	8
Office of Licensure & Certification	CLASSIFIED	MED FACILITIES INSPECTOR	47
Office of Licensure & Certification	CLASSIFIED	OFFICE SVCS SPEC	2
Office of Licensure & Certification	CLASSIFIED	PLANNER	1
Office of Licensure & Certification	CLASSIFIED	Policy Analyst	1

August 1, 2025

Office of Licensure & Certification	CLASSIFIED	POLICY ANALYST SR	1
Office of Licensure & Certification	CLASSIFIED	PROG SUP TECH	3
Office of Licensure & Certification	CLASSIFIED	STATE RAI COORDINATOR	1
Office of Licensure & Certification	WAGE		6
Office of Licensure & Certification	WAGE	HEARING & LEGAL SVCS OFFCR III	1
Office of Licensure & Certification	WAGE	MED FACILITIES INSPECTOR	4
Office of Licensure & Certification	WAGE	PROG SUP TECH	1
Office of Purchasing & General Services			19
Office of Purchasing & General Services	CLASSIFIED		18
Office of Purchasing & General Services	CLASSIFIED	AGENCY MANAGEMENT ANALYST SR	1
Office of Purchasing & General Services	CLASSIFIED	AGENCY PROCUREMENT SPEC SR	5
Office of Purchasing & General Services	CLASSIFIED	BUSINESS OPERATIONS MGR	2
Office of Purchasing & General Services	CLASSIFIED	BUSINESS RESOURCE COORDINATOR	1
Office of Purchasing & General Services	CLASSIFIED	BUYER	1
Office of Purchasing & General Services	CLASSIFIED	BUYER SR	1
Office of Purchasing & General Services	CLASSIFIED	DIR DIVISION OF GENERAL SERV	1
Office of Purchasing & General Services	CLASSIFIED	DIR PROCUREMENT & GEN SERV	1
Office of Purchasing & General Services	CLASSIFIED	FLEET ADMINISTRATOR	1
Office of Purchasing & General Services	CLASSIFIED	GENERAL SERVICES TECHNICIAN	1
Office of Purchasing & General Services	CLASSIFIED	MAILROOM COORDINATOR	1
Office of Purchasing & General Services	CLASSIFIED	PROCUREMENT MANAGER	1
Office of Purchasing & General Services	CLASSIFIED	PROG SUP TECH	1
Office of Purchasing & General Services	WAGE		1
Office of Purchasing & General Services	WAGE	ADMV STAFF SPEC	1
Office of Radiological Health			25

August 1, 2025

Office of Radiological Health	CLASSIFIED		25
Office of Radiological Health	CLASSIFIED	ADMINISTRATIVE DEPUTY	1
		AGENCY MANAGEMENT LEAD	
Office of Radiological Health	CLASSIFIED	ANALYST	1
Office of Radiological Health	CLASSIFIED	FUSION PROGRAM DIRECTOR	1
Office of Radiological Health	CLASSIFIED	OFFICE SVCS SPEC	2
Office of Radiological Health	CLASSIFIED	PROG SUP TECH	1
Office of Radiological Health	CLASSIFIED	Prog Sup Tech Sr	2
Office of Radiological Health	CLASSIFIED	RADIATION SAFETY SPEC	12
Office of Radiological Health	CLASSIFIED	RADIATION SAFETY SPEC SR	2
Office of Radiological Health	CLASSIFIED	RADIATION SAFETY SUPV	3
Office of Vital Records			54
Office of Vital Records	CLASSIFIED		51
Office of Vital Records	CLASSIFIED	ACCOUNTANT	1
Office of Vital Records	CLASSIFIED	BUSINESS OPERATIONS MGR	1
Office of Vital Records	CLASSIFIED	BUYER SR	1
Office of Vital Records	CLASSIFIED	CHIEF DEPUTY STATE REGISTRAR	1
Office of Vital Records	CLASSIFIED	DEPUTY DIRECTOR VITAL RECORDS	1
Office of Vital Records	CLASSIFIED	DIR OFFICE OF VITAL RECORDS	1
Office of Vital Records	CLASSIFIED	FIELD REP SUPERVISOR	1
Office of Vital Records	CLASSIFIED	FIELD REPRESENTATIVE	4
Office of Vital Records	CLASSIFIED	OVR CUSTOMER SUCCESS COORD	1
Office of Vital Records	CLASSIFIED	OVR SUPERVISOR	4
Office of Vital Records	CLASSIFIED	Policy Analyst	1
Office of Vital Records	CLASSIFIED	VITAL RCRDS PROG SUP TECH SPEC	1

August 1, 2025

Office of Vital Records	CLASSIFIED	VITAL RECORDS OFFICE SVCS SPEC	17
Office of Vital Records	CLASSIFIED	VR PROG SUPPORT GENERALIST	10
Office of Vital Records	CLASSIFIED	VR SR PROG SUPPORT GENERALIST	6
Office of Vital Records	WAGE		3
Office of Vital Records	WAGE	OFFICE SVCS SPEC	1
Office of Vital Records	WAGE	VITAL RECORDS OFFICE SVCS SPEC	1
Office of Vital Records	WAGE	VR PROG SUPPORT GENERALIST	1

SUBTOTAL

Local Health Districts	CLASSIFIED	2,069
	WAGE	124
Central Offices	CLASSIFIED	1,112
	WAGE	117

TOTAL

VDH	CLASSIFIED	3,181
VDH	WAGE	241

¹ All positions are based on currently filled Classified and Wage positions. Vacant positions not included in counts.