



# STATEWIDE SNAPSHOT

## SY 2024–2025

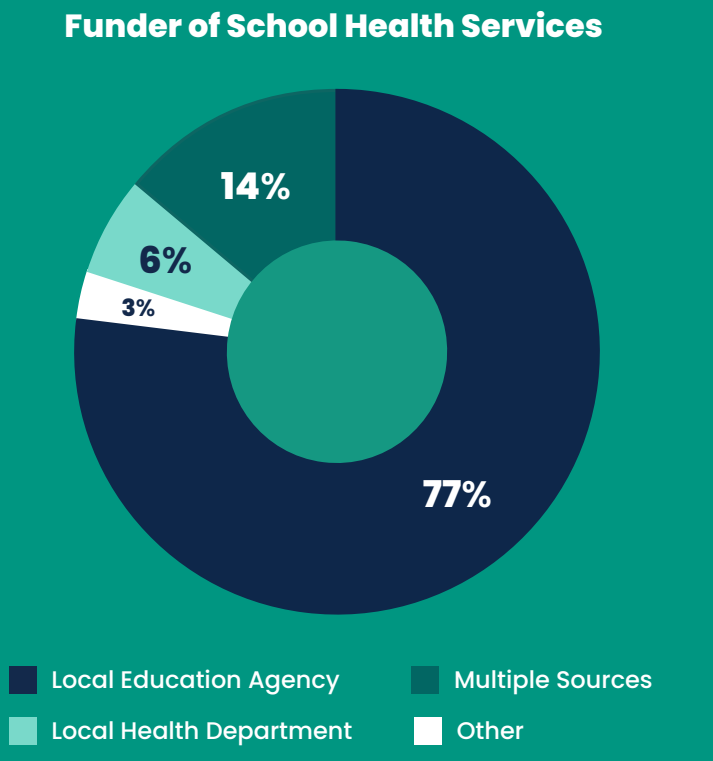
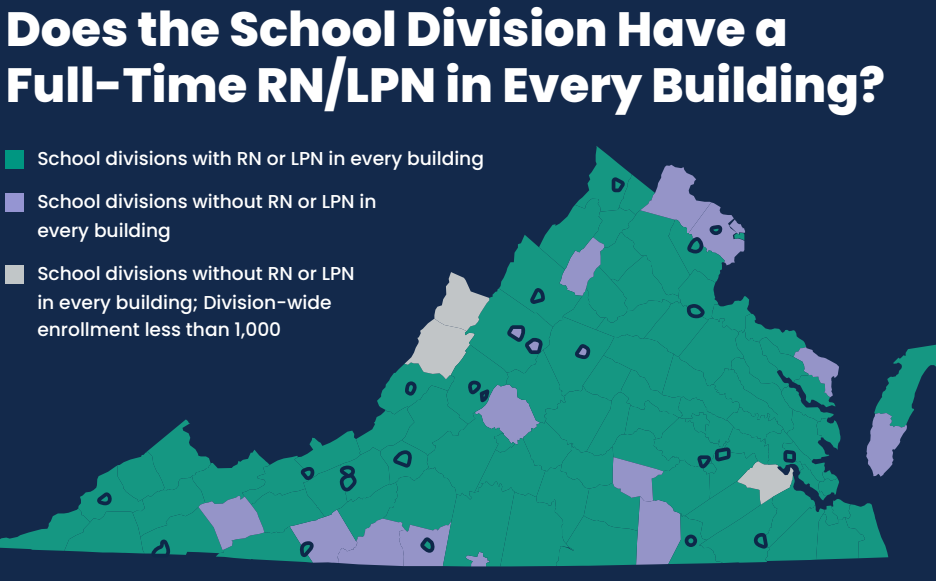
<b>1,261,387</b> Students Enrolled	<b>131</b> School Divisions	<b>1,934</b> School Buildings	<b>2,037</b> Full-Time School Nurses
---------------------------------------	--------------------------------	----------------------------------	---

**How is School Health Data Collected?**  
The Virginia Department of Education (VDOE), in collaboration with the Virginia Department of Health (VDH), conducts an annual statewide survey of school health personnel. This survey captures detailed information about the health services provided in Virginia’s public schools.

**73%**  
of students in the Commonwealth have access to a licensed healthcare provider in school.

**Student Health by the Numbers**  
**54.25%** of Virginia students reported having a primary care provider.  
**13.8%** have chronic conditions (174,549 students).  
**8.4%** have asthma (105,854 students).  
**7,447,814** was the total number of student clinic visits.  
**61,850** of those were mental health visits.

**Code of Virginia § 22.1–253.13:2**  
**97.7%** of school divisions employ full-time RNs and LPNs in specialized student support positions to satisfy the code.  
**Only 30** RN or LPN positions would need to be added throughout the Commonwealth.



**School Health Services at a Glance**

- \$** VDOE reported for fiscal year 2024, **Medicaid Nursing Services reimbursement** to schools totaled **\$68,675,266**.
- 👩⚕️** If a nurse were placed in every school building, **1,261,387 students** across the Commonwealth would gain access to a licensed healthcare provider.
- 🏫** **156 Title 1 schools** are located in areas without a nurse in every building (lavender areas in the map key above).

## DID YOU KNOW?

**RN oversight** is required for **Medicaid reimbursement** for nursing services.

**5.02%** of buildings in school divisions with 1000+ students enrolled do not have a full-time licensed professional nurse.

School divisions that employ full-time licensed nurses to cover their buildings are **twice as likely to participate in Medicaid reimbursement**.

For many students, the school nurse is their **only access to healthcare**.