

Indicator 29: Routine Checkup

Internal variable name: outc29_rt_checkup

Definition: About how long has it been since you last visited a doctor for a routine checkup?
(Respondents who have had a checkup within the past year/anytime less than 12 months ago)

Predictive models

	Mixed, demos only	Logit, no area effects	Mixed with area covariates
	b/se	b/se	b/se
Outcome 29: Routine Checkup			
NH Black vs. NH White	0.6642*** (0.1207)	0.6881*** (0.1074)	0.6881*** (0.1207)
NH Asian vs. NH White	0.3527 (0.2442)	0.3785* (0.1909)	0.3785 (0.2369)
NH Other vs. NH White	-0.0245 (0.1121)	-0.0116 (0.1582)	-0.0116 (0.1136)
Hispanic vs. NH White	0.1340 (0.1088)	0.1598 (0.1516)	0.1598 (0.1125)
Female	0.2680*** (0.0662)	0.2691*** (0.0730)	0.2691*** (0.0658)
Age 18-34 vs. 65+	-1.7377*** (0.1616)	-1.7165*** (0.1062)	-1.7165*** (0.1611)
Age 35-44 vs. 65+	-1.3636*** (0.2052)	-1.3623*** (0.1184)	-1.3623*** (0.2072)
Age 45-54 vs. 65+	-1.1296*** (0.1432)	-1.1284*** (0.1090)	-1.1284*** (0.1445)
Age 55-64 vs. 65+	-0.6475*** (0.0874)	-0.6461*** (0.1073)	-0.6461*** (0.0870)
% HHs with children receiving SSI, cash transfers, SNAP		0.0019 (0.0374)	0.0019 (0.0244)
Clinical care z-score, County Rankings		-0.7869 (0.4986)	-0.7869 (0.4251)
2010 Census Mail Return Rate		-0.0000 (0.0000)	-0.0000 (0.0000)
% non-inst group quarter pop, 2010 Census		-0.0320* (0.0158)	-0.0320** (0.0106)
Leukemia Female Rate		-0.0011 (0.0069)	-0.0011 (0.0085)
o.% HHs with children receiving SSI, cash transfers, SNAP		0.0000 (.)	
VA BRFSS 2014 SAE outc14_diabetes_test		0.5883	0.5882

c.ACS_pct_welfare#c.VA14SAE_outc14_diabetes_test		(1.7798)	(1.2297)
		-0.0015	-0.0015
		(0.0633)	(0.0430)
Intercept	1.8734***	1.5645	1.5646*
	(0.1143)	(1.0603)	(0.7192)
Area effect variance			
	0.0000		0.0000
	(0.0000)		(0.0000)

Number of alternative models used to estimate model error = 11.

Results

County name	County FIPS	Direct estimate	Direct 95% CI	SAE composite	SAE CI
Augusta County	51015	72.9%	(59.3%, 83.3%)	78.7%	(75.7%, 81.3%)
Bath County	51017	85.1%	(41.2%, 97.9%)	80.1%	(75.7%, 83.8%)
Caroline County	51033	49.7%	(23.8%, 75.7%)	78.3%	(73.2%, 82.7%)
Clarke County	51043	55.1%	(27.9%, 79.5%)	78.3%	(74.1%, 82.1%)
Culpeper County	51047	79.1%	(62.9%, 89.4%)	79.3%	(76.2%, 82.1%)
Fauquier County	51061	66.6%	(48.3%, 81.0%)	79.1%	(75.4%, 82.3%)
Frederick County	51069	81.1%	(68.2%, 89.5%)	77.1%	(73.0%, 80.8%)
Highland County	51091	91.3%	(45.5%, 97.8%)	78.3%	(70.8%, 84.4%)
King George County	51099	45.6%	(18.4%, 75.7%)	78.7%	(75.3%, 81.8%)
Madison County	51113	76.2%	(50.6%, 90.9%)	79.1%	(75.3%, 82.4%)
Orange County	51137	64.0%	(42.0%, 81.4%)	80.0%	(77.0%, 82.7%)
Page County	51139	86.6%	(61.9%, 96.2%)	75.8%	(70.6%, 80.4%)
Rappahannock County	51157	66.5%	(35.9%, 87.5%)	77.9%	(73.4%, 81.8%)
Rockbridge County	51163	80.8%	(63.6%, 91.1%)	79.6%	(76.3%, 82.5%)
Rockingham County	51165	70.5%	(58.6%, 80.2%)	72.8%	(68.3%, 76.9%)
Shenandoah County	51171	68.6%	(48.9%, 83.3%)	76.6%	(72.5%, 80.2%)
Spotsylvania County	51177	68.0%	(55.2%, 78.5%)	77.1%	(73.9%, 80.0%)
Stafford County	51179	74.0%	(63.5%, 82.3%)	76.0%	(72.6%, 79.2%)
Warren County	51187	73.4%	(53.8%, 86.7%)	76.6%	(72.1%, 80.5%)
Buena Vista City	51530	43.0%	(13.6%, 78.3%)	75.3%	(70.5%, 79.5%)
Fredericksburg City	51630	68.2%	(41.6%, 86.6%)	71.2%	(66.4%, 75.7%)
Harrisonburg City	51660	92.0%	(49.1%, 97.4%)	65.4%	(57.2%, 72.8%)
Lexington City	51678	100.0%	(0.6%, 100.0%)	60.3%	(40.5%, 77.2%)
Staunton City	51790	56.2%	(19.7%, 87.1%)	78.2%	(73.5%, 82.2%)
Waynesboro City	51820	96.5%	(55.3%, 98.5%)	80.6%	(75.9%, 84.6%)
Winchester City	51840	56.6%	(15.4%, 90.3%)	75.6%	(71.4%, 79.3%)

County name	County FIPS	Direct estimate	Direct 95% CI	SAE composite	SAE CI
Albemarle County	51003	72.1%	(59.9%, 81.7%)	76.8%	(73.2%, 80.1%)
Alleghany County	51005	56.4%	(26.3%, 82.4%)	78.1%	(74.4%, 81.4%)
Amherst County	51009	62.3%	(37.8%, 81.8%)	78.3%	(75.0%, 81.3%)
Appomattox County	51011	80.1%	(52.1%, 93.7%)	79.5%	(75.9%, 82.7%)
Arlington City	51013	74.9%	(65.3%, 82.6%)	76.4%	(73.5%, 79.0%)
Bedford County	51019	76.0%	(64.8%, 84.4%)	79.8%	(75.6%, 83.5%)
Botetourt County	51023	78.4%	(51.8%, 92.4%)	81.1%	(77.8%, 84.0%)
Campbell County	51031	75.4%	(62.1%, 85.1%)	76.1%	(72.6%, 79.4%)
Craig County	51045	100.0%	(31.8%, 100.0%)	81.6%	(77.6%, 84.9%)
Fairfax County	51059	70.0%	(66.1%, 73.5%)	20.1%	(18.2%, 22.1%)
Fluvanna County	51065	80.1%	(56.5%, 92.6%)	80.8%	(76.8%, 84.2%)
Greene County	51079	88.4%	(54.7%, 95.3%)	75.5%	(69.9%, 80.4%)
Loudoun County	51107	72.1%	(64.1%, 78.9%)	77.6%	(75.0%, 79.9%)
Louisa County	51109	78.7%	(59.9%, 90.1%)	79.7%	(75.8%, 83.1%)
Nelson County	51125	51.5%	(24.0%, 78.1%)	80.6%	(73.5%, 86.1%)
Prince William County	51153	73.8%	(67.1%, 79.6%)	76.8%	(74.3%, 79.2%)
Roanoke County	51161	73.8%	(62.9%, 82.4%)	81.4%	(78.7%, 83.8%)
Alexandria City	51510	79.7%	(70.7%, 86.5%)	76.4%	(72.6%, 79.7%)
Charlottesville City	51540	80.0%	(56.6%, 92.4%)	75.3%	(69.9%, 80.0%)
Covington City	51580	100.0%	(12.6%, 100.0%)	80.8%	(76.3%, 84.6%)
Fairfax City	51600	71.9%	(58.5%, 82.3%)	78.1%	(73.6%, 82.0%)
Falls Church City	51610	70.4%	(39.5%, 89.7%)	83.3%	(77.7%, 87.7%)
Lynchburg City	51680	63.2%	(48.7%, 75.7%)	70.1%	(63.3%, 76.1%)
Manassas City	51683	66.7%	(37.5%, 86.9%)	75.0%	(69.9%, 79.5%)
Manassas Park City	51685	90.5%	(20.5%, 98.5%)	73.7%	(66.8%, 79.6%)
Salem City	51775	59.0%	(19.6%, 89.5%)	77.8%	(72.2%, 82.5%)

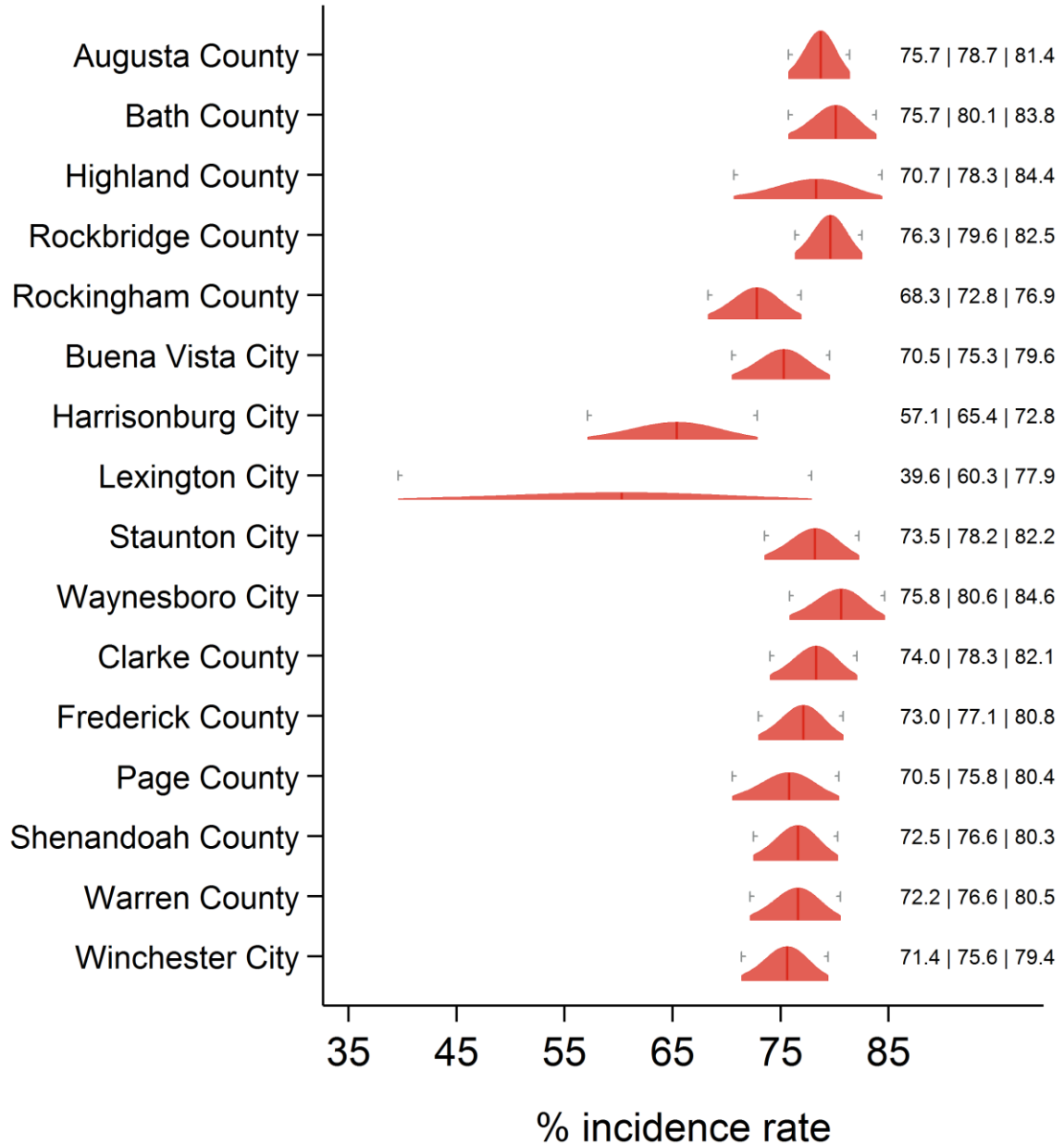
County name	County FIPS	Direct estimate	Direct 95% CI	SAE composite	SAE CI
Bland County	51021	90.5%	(57.0%, 98.6%)	79.9%	(75.4%, 83.7%)
Buchanan County	51027	80.2%	(60.2%, 91.6%)	74.4%	(68.8%, 79.3%)
Carroll County	51035	86.9%	(66.1%, 95.8%)	78.7%	(76.0%, 81.1%)
Dickenson County	51051	66.8%	(43.1%, 84.2%)	76.4%	(72.5%, 79.9%)
Floyd County	51063	57.6%	(35.5%, 77.0%)	74.5%	(70.0%, 78.6%)
Franklin County	51067	82.6%	(63.0%, 93.0%)	79.3%	(76.2%, 82.0%)
Giles County	51071	66.7%	(48.6%, 80.9%)	74.9%	(71.9%, 77.7%)
Grayson County	51077	70.7%	(38.8%, 90.2%)	77.9%	(74.0%, 81.4%)
Henry County	51089	83.0%	(69.3%, 91.4%)	81.3%	(77.4%, 84.6%)
Lee County	51105	72.7%	(38.7%, 91.8%)	76.0%	(71.0%, 80.4%)
Montgomery County	51121	57.8%	(43.4%, 70.9%)	69.1%	(64.0%, 73.8%)
Patrick County	51141	87.4%	(64.1%, 96.4%)	81.8%	(78.1%, 85.0%)
Pittsylvania County	51143	74.9%	(63.4%, 83.7%)	81.3%	(78.6%, 83.6%)
Pulaski County	51155	89.6%	(73.9%, 96.4%)	74.3%	(71.3%, 77.2%)
Russell County	51167	63.6%	(42.5%, 80.5%)	75.6%	(71.4%, 79.4%)
Scott County	51169	73.9%	(55.2%, 86.7%)	78.8%	(74.8%, 82.3%)
Smyth County	51173	90.6%	(65.0%, 94.7%)	77.8%	(74.4%, 80.8%)
Tazewell County	51185	58.5%	(39.5%, 75.3%)	76.1%	(71.8%, 80.0%)
Washington County	51191	71.2%	(56.5%, 82.4%)	78.5%	(75.6%, 81.2%)
Wise County	51195	83.6%	(69.7%, 91.9%)	76.5%	(72.1%, 80.3%)
Wythe County	51197	64.0%	(42.2%, 81.3%)	78.5%	(75.3%, 81.3%)
Bristol City	51520	18.6%	(3.3%, 76.2%)	76.2%	(69.2%, 82.0%)
Danville City	51590	74.3%	(47.9%, 90.1%)	82.1%	(76.8%, 86.5%)
Galax City	51640	100.0%	(23.9%, 100.0%)	77.2%	(70.2%, 82.9%)
Martinsville City	51690	65.9%	(13.9%, 95.9%)	80.8%	(77.1%, 84.0%)
Norton City	51720	100.0%	(39.5%, 100.0%)	77.7%	(66.5%, 86.0%)
Radford City	51750	59.0%	(19.9%, 89.3%)	66.2%	(58.2%, 73.5%)
Roanoke City	51770	76.9%	(64.5%, 85.9%)	78.2%	(74.0%, 81.8%)

County name	County FIPS	Direct estimate	Direct 95% CI	SAE composite	SAE CI
Amelia County	51007	53.3%	(23.4%, 81.0%)	81.5%	(77.1%, 85.2%)
Brunswick County	51025	78.9%	(46.8%, 94.0%)	80.2%	(75.9%, 83.9%)
Buckingham County	51029	65.7%	(42.8%, 83.1%)	80.8%	(77.2%, 83.9%)
Charles City County	51036	75.1%	(29.8%, 94.6%)	77.7%	(72.7%, 82.0%)
Charlotte County	51037	70.5%	(47.4%, 86.4%)	81.1%	(77.5%, 84.2%)
Chesterfield County	51041	74.1%	(66.4%, 80.6%)	79.9%	(77.8%, 81.9%)
Cumberland County	51049	79.9%	(59.7%, 91.4%)	81.2%	(76.8%, 84.9%)
Dinwiddie County	51053	75.0%	(53.0%, 88.8%)	79.5%	(75.7%, 82.9%)
Goochland County	51075	63.4%	(33.0%, 85.9%)	82.1%	(78.8%, 85.0%)
Greensville County	51081	95.7%	(59.2%, 98.3%)	82.9%	(77.5%, 87.2%)
Halifax County	51083	83.2%	(68.4%, 91.9%)	81.8%	(78.2%, 85.0%)
Hanover County	51085	79.2%	(67.4%, 87.5%)	81.2%	(77.5%, 84.5%)
Henrico County	51087	78.0%	(70.1%, 84.3%)	81.1%	(78.5%, 83.3%)
Lunenburg County	51111	85.2%	(66.2%, 94.4%)	81.0%	(77.1%, 84.3%)
Mecklenburg County	51117	74.4%	(60.7%, 84.6%)	81.8%	(77.7%, 85.2%)
New Kent County	51127	65.6%	(37.7%, 85.7%)	80.9%	(76.3%, 84.7%)
Nottoway County	51135	80.9%	(54.6%, 93.7%)	81.5%	(76.9%, 85.3%)
Powhatan County	51145	77.6%	(55.4%, 90.6%)	81.3%	(76.6%, 85.3%)
Prince Edward County	51147	74.4%	(55.0%, 87.4%)	74.3%	(67.6%, 80.1%)
Prince George County	51149	78.2%	(63.1%, 88.3%)	81.3%	(77.3%, 84.7%)
Surry County	51181	72.1%	(42.1%, 90.2%)	83.1%	(78.6%, 86.8%)
Sussex County	51183	59.9%	(38.4%, 78.1%)	81.0%	(71.8%, 87.7%)
Colonial Heights City	51570	79.9%	(55.5%, 92.7%)	82.9%	(79.0%, 86.3%)
Emporia City	51595	100.0%	(8.2%, 100.0%)	81.2%	(76.1%, 85.4%)
Hopewell City	51670	64.5%	(37.5%, 84.6%)	80.4%	(76.6%, 83.8%)
Petersburg City	51730	74.1%	(55.5%, 86.8%)	81.3%	(74.8%, 86.4%)
Richmond City	51760	67.6%	(54.4%, 78.5%)	75.4%	(70.8%, 79.4%)

County name	County FIPS	Direct estimate	Direct 95% CI	SAE composite	SAE CI
Accomack County	51001	82.5%	(68.8%, 90.9%)	81.0%	(76.5%, 84.8%)
Essex County	51057	59.7%	(29.2%, 84.2%)	82.6%	(78.4%, 86.1%)
Gloucester County	51073	72.3%	(55.5%, 84.6%)	83.5%	(80.0%, 86.5%)
Isle of Wight County	51093	80.9%	(53.1%, 94.1%)	82.8%	(78.9%, 86.0%)
James City County	51095	86.6%	(77.1%, 92.6%)	81.5%	(78.2%, 84.5%)
King and Queen County	51097	100.0%	(68.4%, 100.0%)	81.5%	(68.1%, 90.1%)
King William County	51101	75.1%	(44.7%, 91.8%)	80.3%	(76.5%, 83.7%)
Lancaster County	51103	78.3%	(46.4%, 93.7%)	82.8%	(79.4%, 85.6%)
Mathews County	51115	93.8%	(69.5%, 99.0%)	82.5%	(75.7%, 87.7%)
Middlesex County	51119	91.7%	(72.6%, 97.9%)	83.3%	(78.5%, 87.1%)
Northampton County	51131	91.4%	(75.6%, 97.3%)	83.4%	(77.6%, 88.0%)
Northumberland County	51133	82.2%	(63.1%, 92.6%)	83.9%	(79.9%, 87.3%)
Richmond County	51159	89.6%	(65.8%, 97.5%)	82.3%	(74.5%, 88.0%)
Southampton County	51175	80.3%	(50.4%, 94.3%)	81.3%	(76.7%, 85.2%)
Westmoreland County	51193	53.2%	(23.2%, 81.0%)	79.8%	(75.0%, 83.8%)
York County	51199	81.4%	(67.4%, 90.2%)	80.2%	(76.4%, 83.6%)
Chesapeake City	51550	77.0%	(65.8%, 85.4%)	80.2%	(77.7%, 82.5%)
Franklin City	51620	79.0%	(51.9%, 92.9%)	81.3%	(76.1%, 85.6%)
Hampton City	51650	76.4%	(65.8%, 84.4%)	79.9%	(76.6%, 82.7%)
Newport News City	51700	68.5%	(57.0%, 78.1%)	77.1%	(74.2%, 79.8%)
Norfolk City	51710	68.2%	(58.6%, 76.5%)	69.4%	(65.3%, 73.2%)
Poquoson City	51735	100.0%	(36.1%, 100.0%)	81.5%	(76.8%, 85.4%)
Portsmouth City	51740	82.9%	(73.7%, 89.4%)	80.5%	(76.9%, 83.6%)
Suffolk City	51800	79.5%	(66.5%, 88.3%)	82.5%	(79.2%, 85.4%)
Virginia Beach City	51810	74.9%	(68.3%, 80.5%)	76.7%	(74.7%, 78.5%)
Williamsburg City	51830	38.8%	(8.6%, 81.1%)	61.3%	(49.1%, 72.2%)

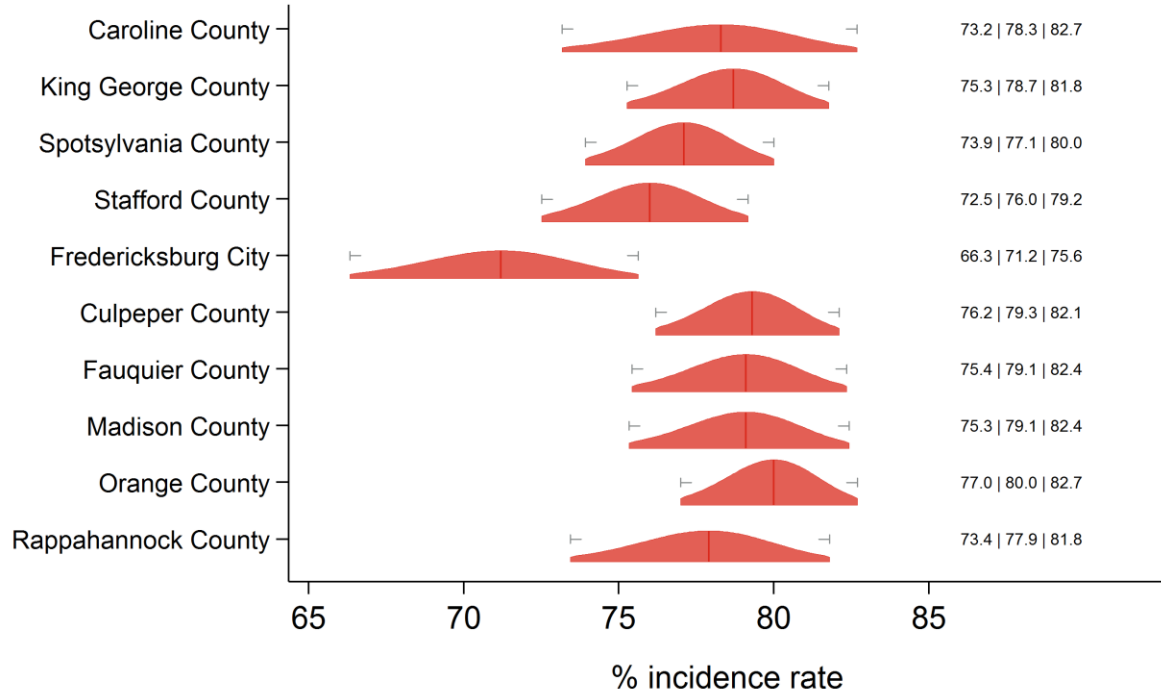
Graphical representation

Routine Checkup Central Shenandoah and Lord Fairfax HDs



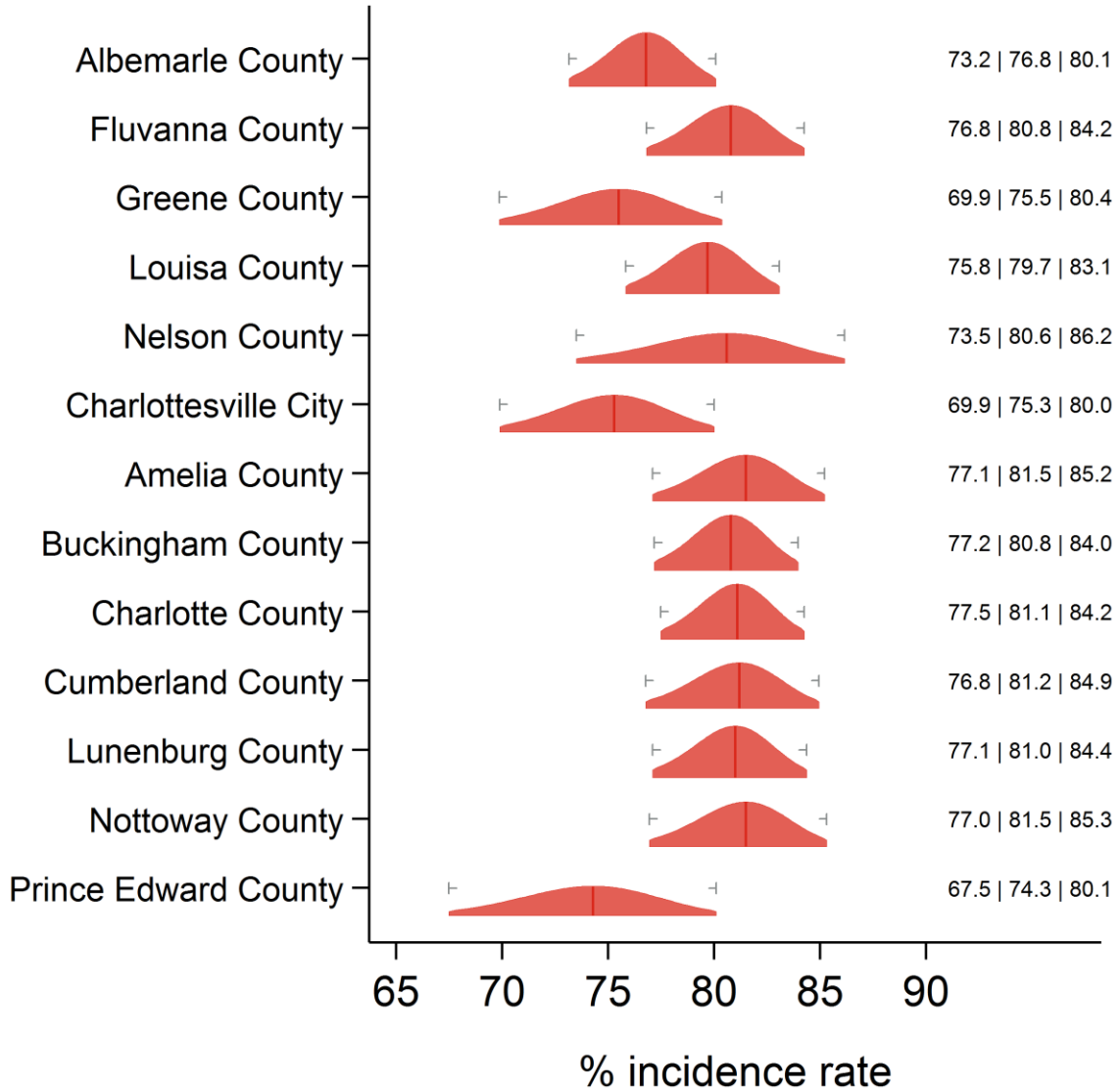
Text at right: 2-sided 95% LCB | Point Estimate | 2-sided 95% UCB
Gray markers: 95% confidence interval

Routine Checkup Rappahannock/Rapidan and Rappahannock HDs



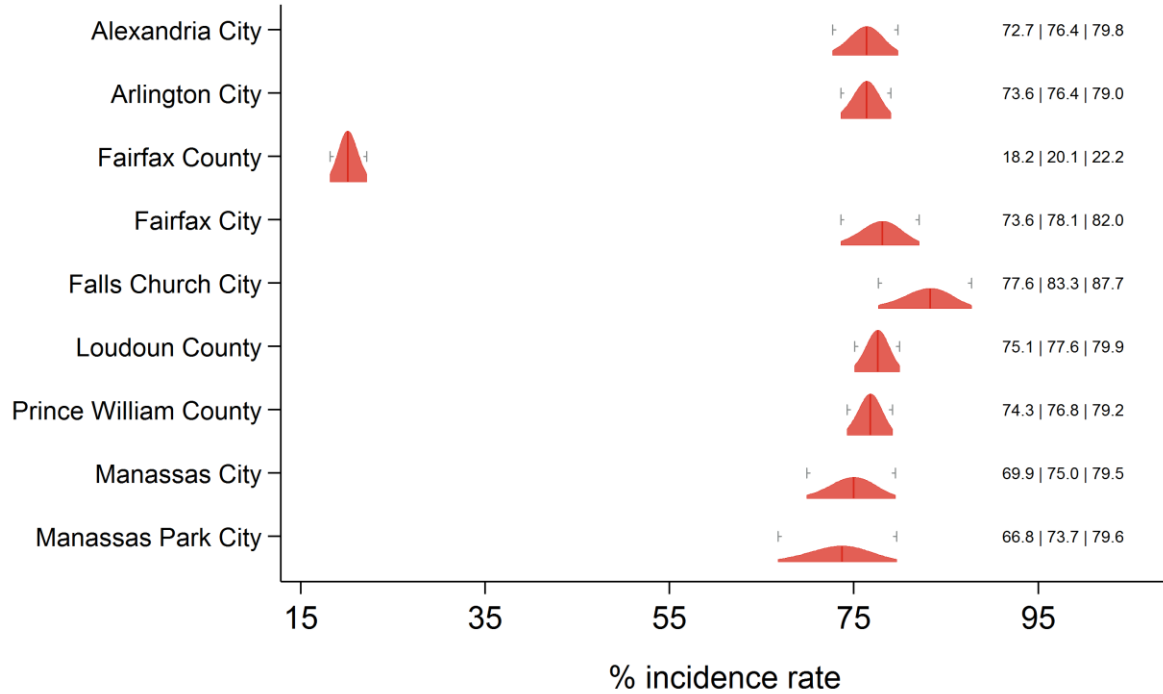
Text at right: 2-sided 95% LCB | Point Estimate | 2-sided 95% UCB
 Gray markers: 95% confidence interval

Routine Checkup Thomas Jefferson and Piedmont HDs



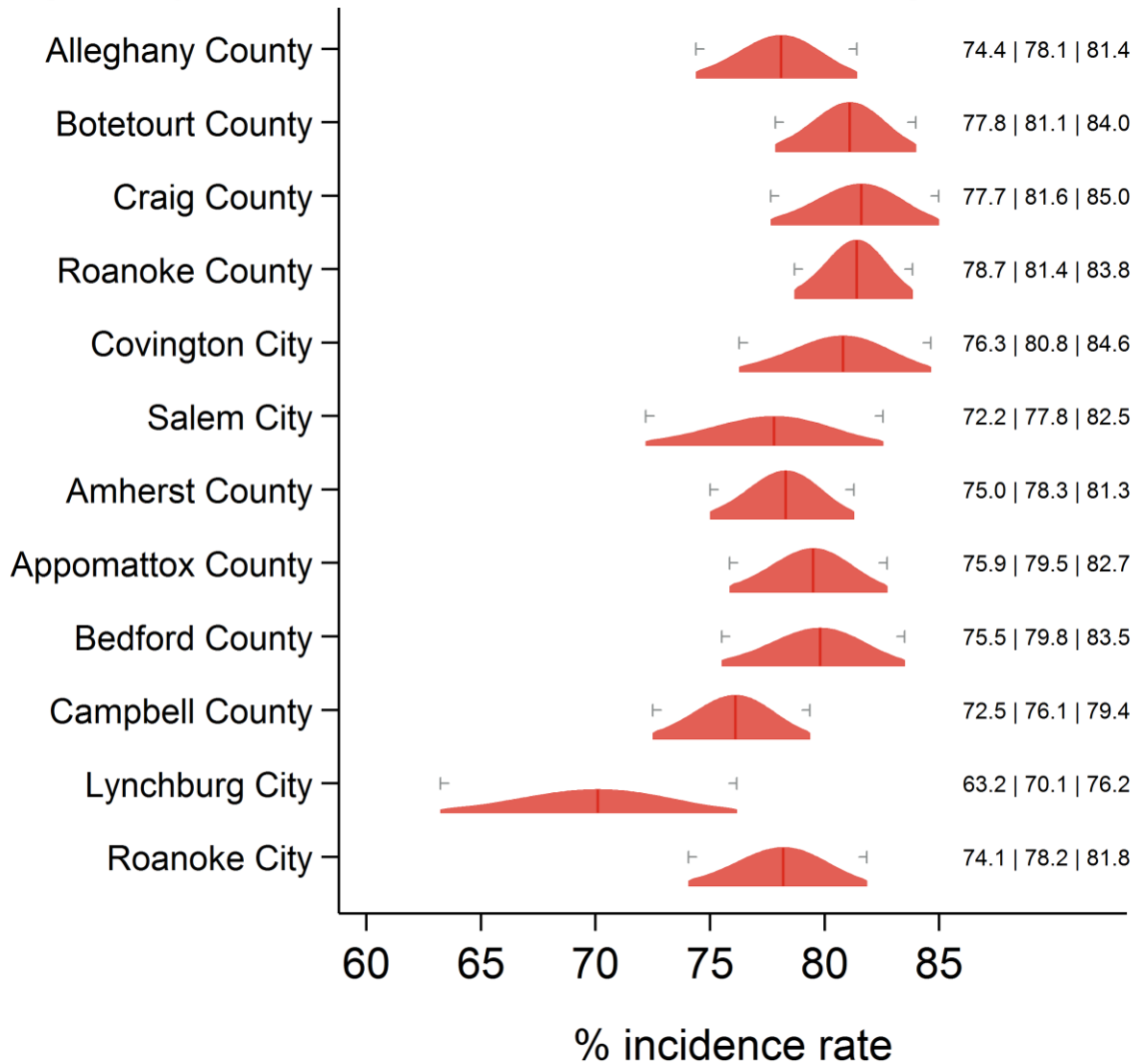
Text at right: 2-sided 95% LCB | Point Estimate | 2-sided 95% UCB
 Gray markers: 95% confidence interval

Routine Checkup Alexandria, Fairfax, Arlington, Loudon, Prince William HDs



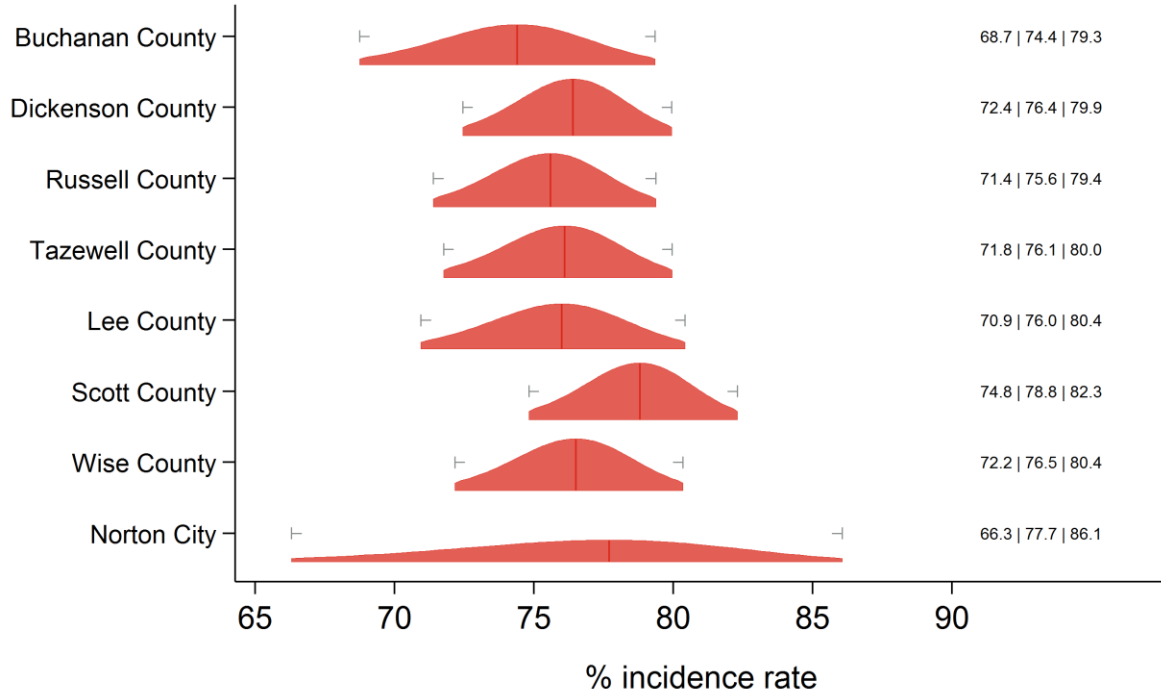
Text at right: 2-sided 95% LCB | Point Estimate | 2-sided 95% UCB
 Gray markers: 95% confidence interval

Routine Checkup Alleghany, Roanoke and Central Virginia HDs



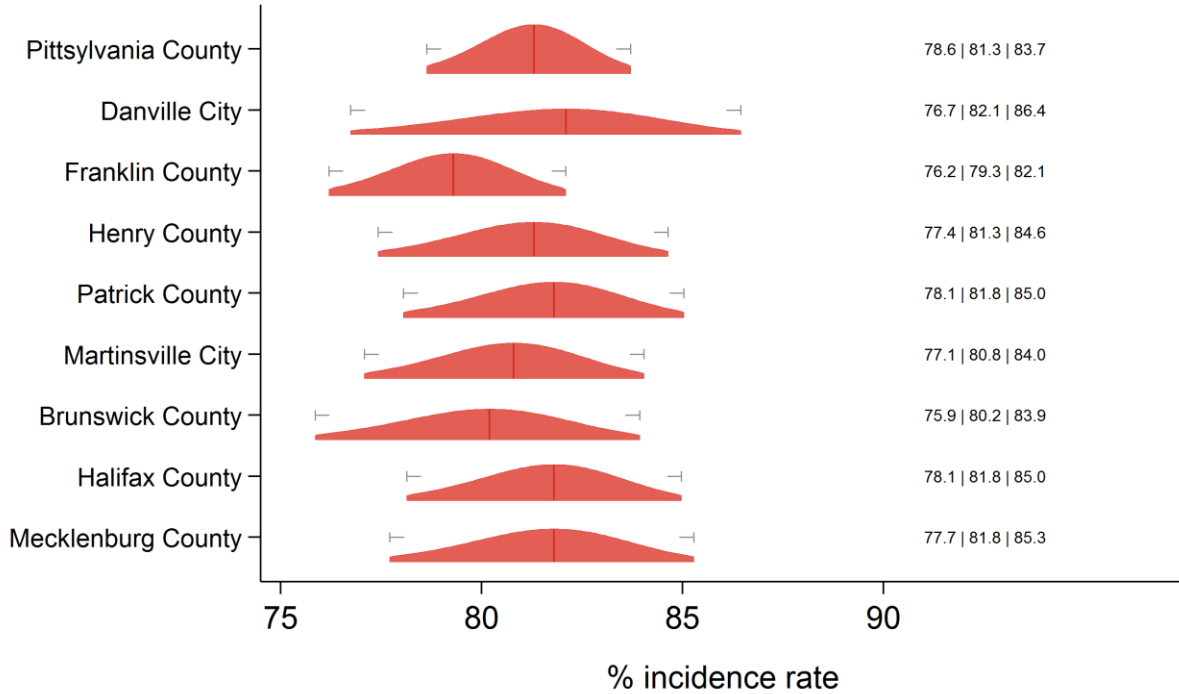
Text at right: 2-sided 95% LCB | Point Estimate | 2-sided 95% UCB
 Gray markers: 95% confidence interval

Routine Checkup Cumberland Plateau and Lenowisco HDs



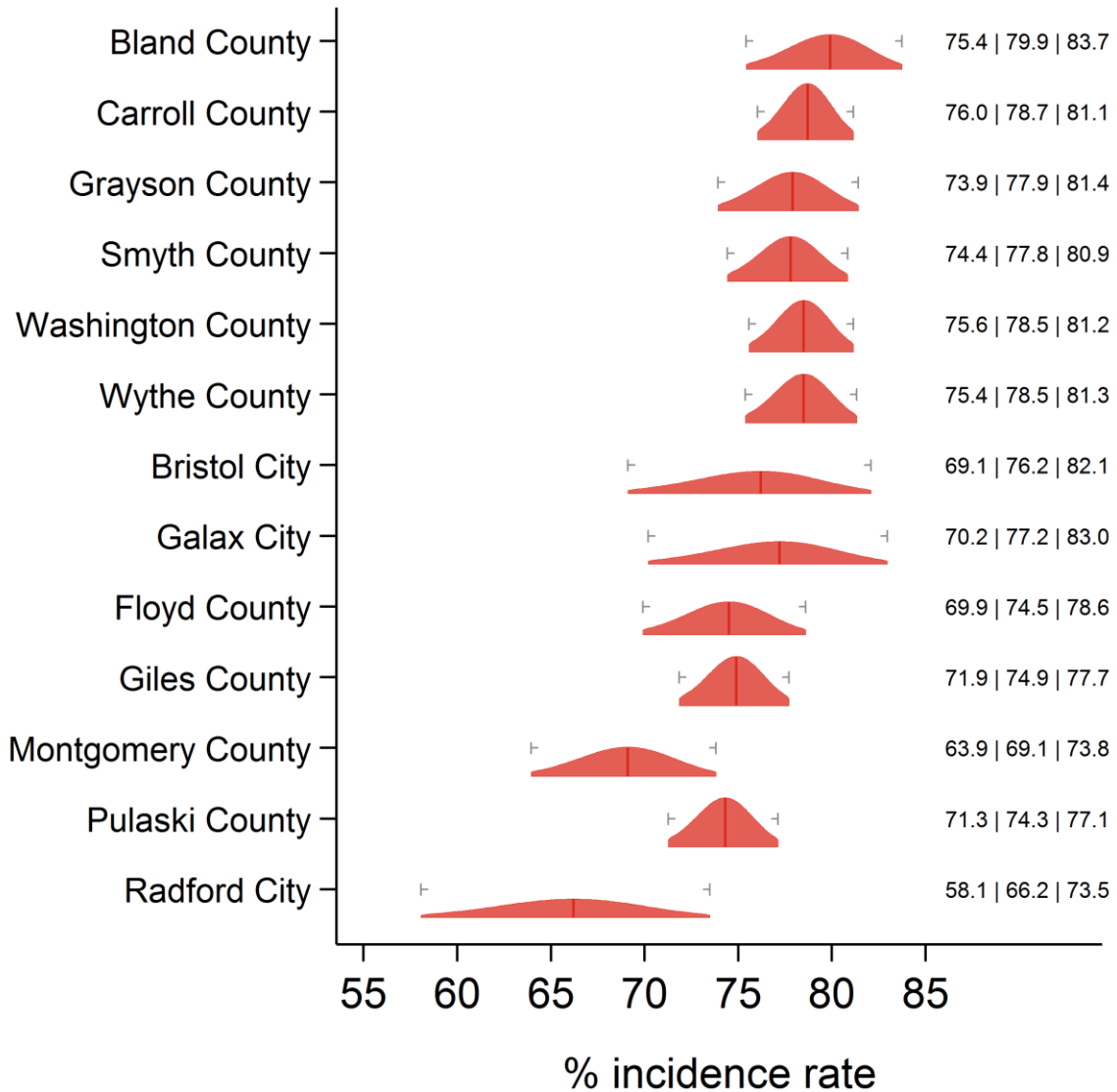
Text at right: 2-sided 95% LCB | Point Estimate | 2-sided 95% UCB
 Gray markers: 95% confidence interval

Routine Checkup Pittsylvania/Danville, Southside and West Piedmont HDs



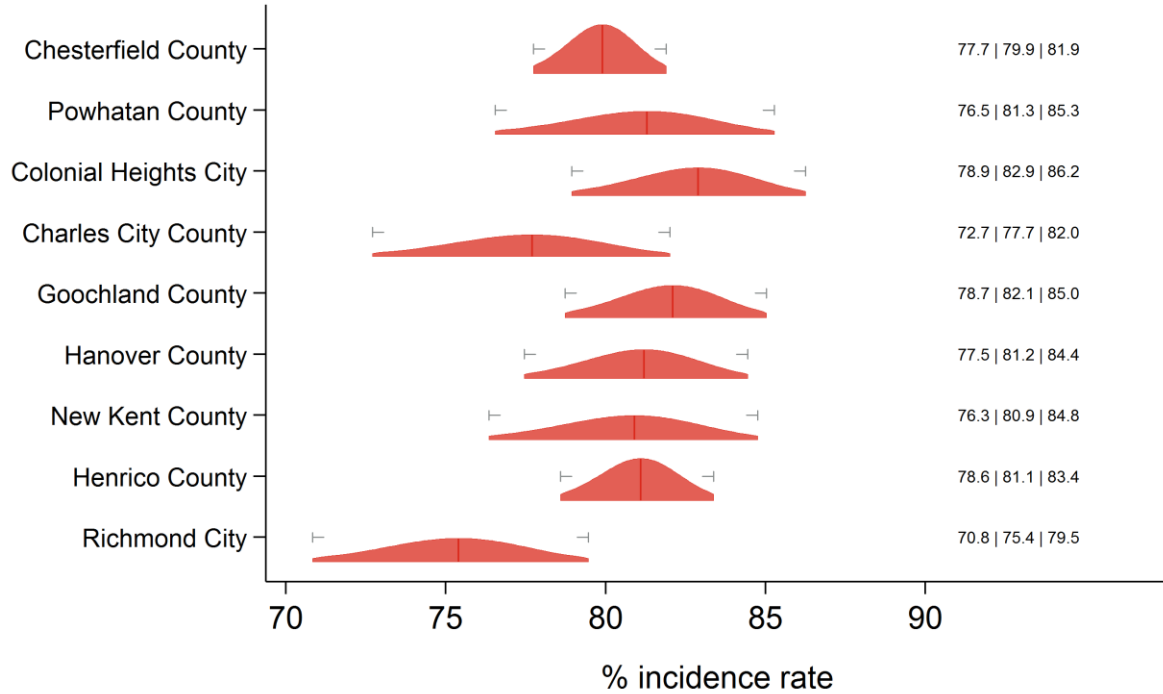
Text at right: 2-sided 95% LCB | Point Estimate | 2-sided 95% UCB
 Gray markers: 95% confidence interval

Routine Checkup New River and Mount Rogers HDs



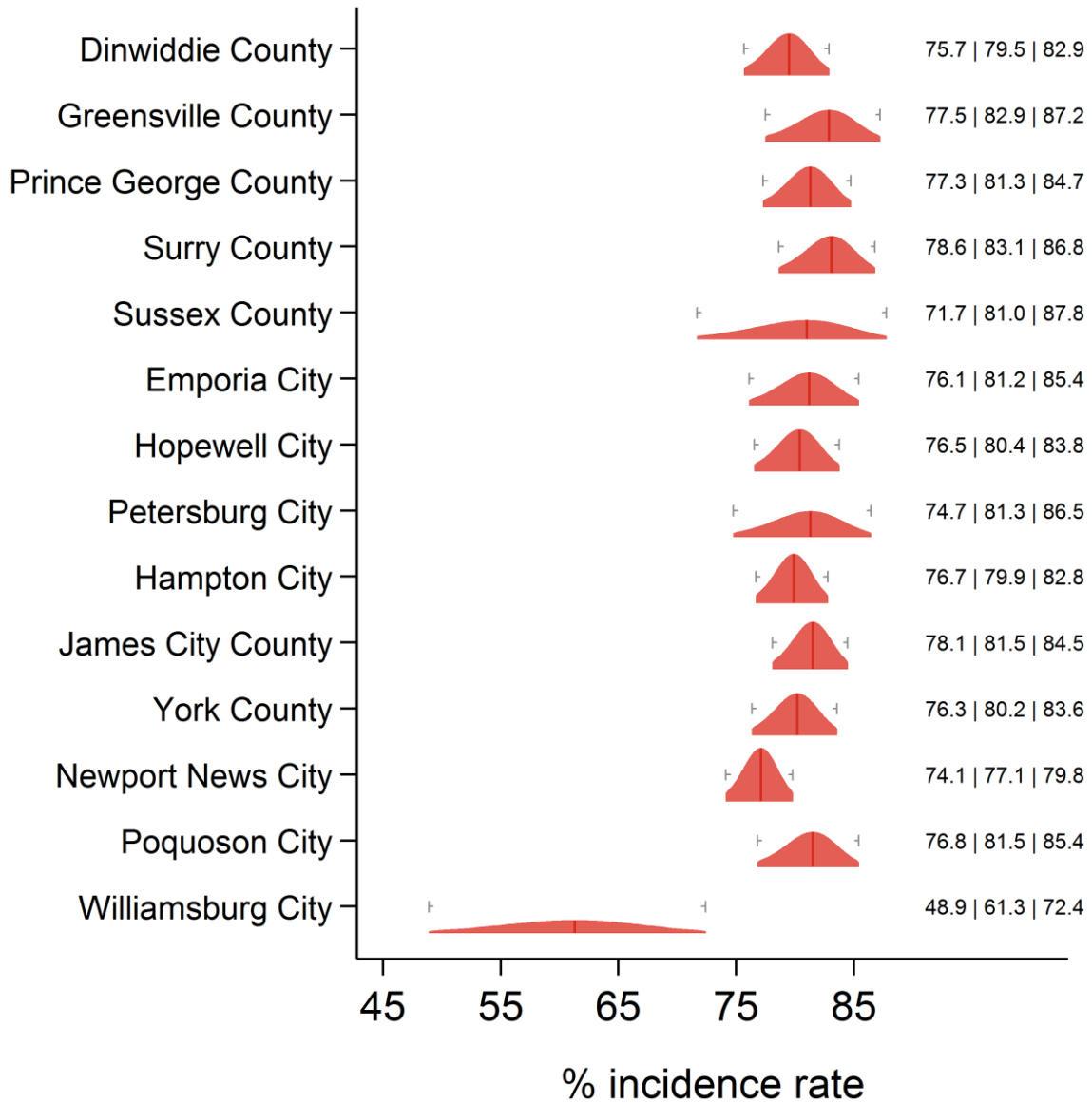
Text at right: 2-sided 95% LCB | Point Estimate | 2-sided 95% UCB
 Gray markers: 95% confidence interval

Routine Checkup Chesterfield, Chickahominy, Henrico and Richmond HDs



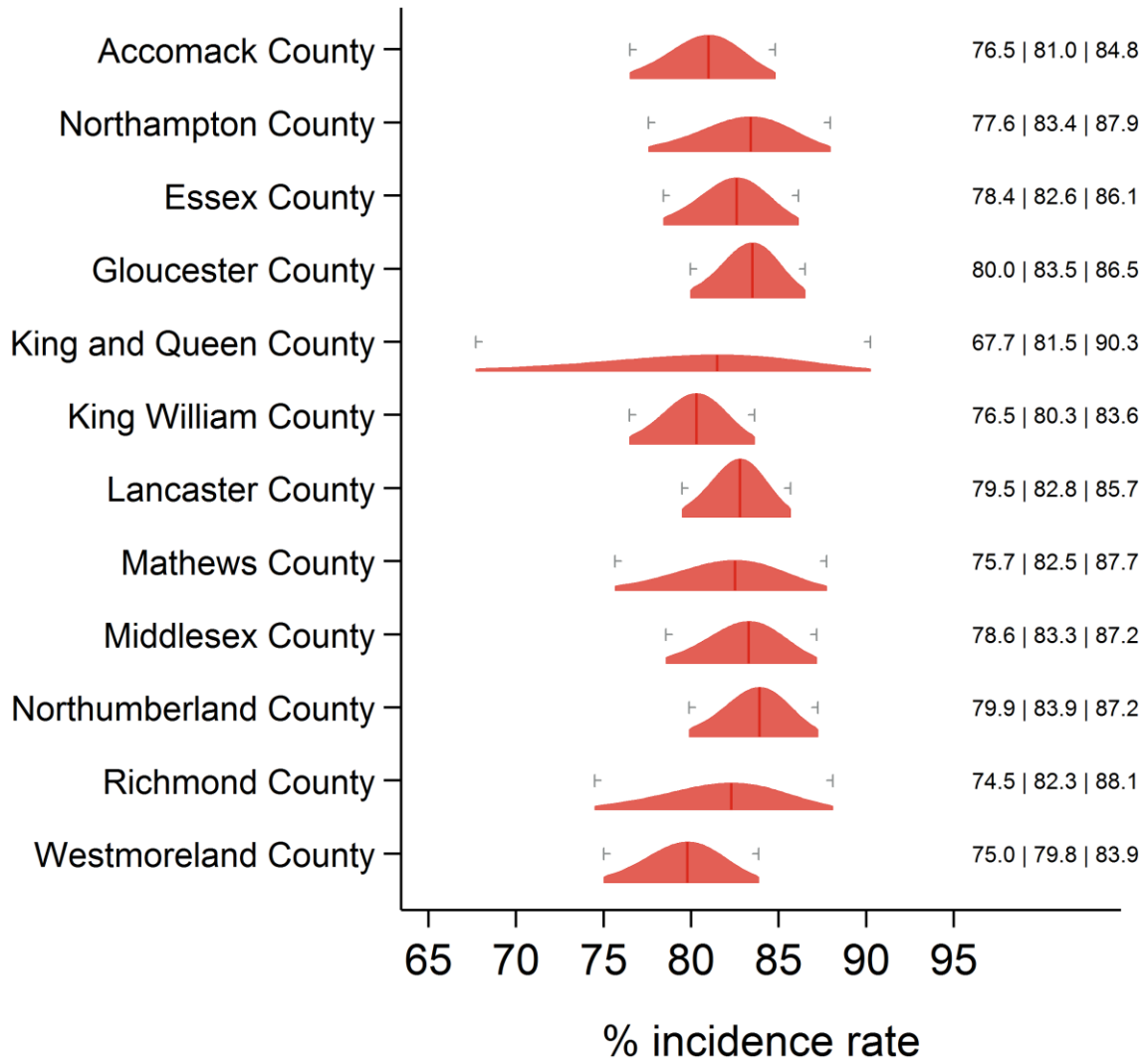
Text at right: 2-sided 95% LCB | Point Estimate | 2-sided 95% UCB
 Gray markers: 95% confidence interval

Routine Checkup Crater, Peninsula and Hampton HDs



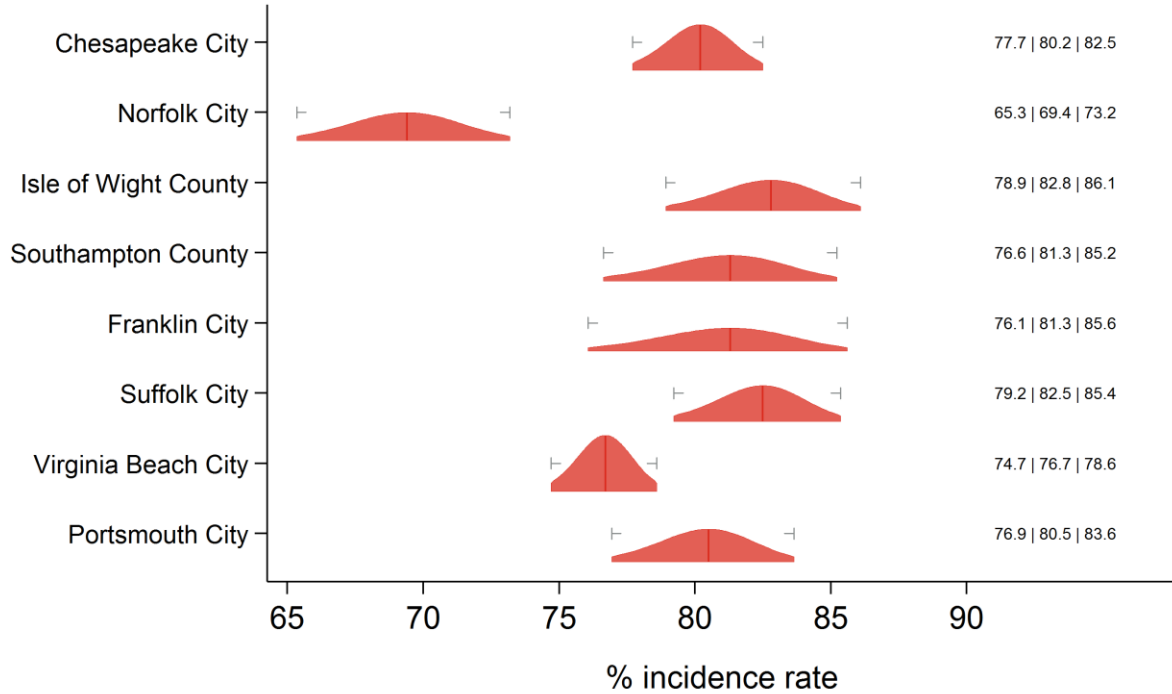
Text at right: 2-sided 95% LCB | Point Estimate | 2-sided 95% UCB
 Gray markers: 95% confidence interval

Routine Checkup Eastern Shore and Three Rivers HDs



Text at right: 2-sided 95% LCB | Point Estimate | 2-sided 95% UCB
 Gray markers: 95% confidence interval

Routine Checkup Norfolk, Portsmouth, Chesapeake, VA Beach, W. Tidewater HDs



Text at right: 2-sided 95% LCB | Point Estimate | 2-sided 95% UCB
 Gray markers: 95% confidence interval

Additional diagnostics

Direct estimate is inside the 95% SAE Wilson CI: 39 areas.

Direct estimate is outside the 95% SAE Wilson CI: 94 areas.

SAE estimate is inside the 95% direct Wilson CI: 126 areas.

SAE estimate is outside the 95% direct Wilson CI: 7 areas.

SAE Wilson 95% CI is fully inside the 95% direct Wilson CI: 105 areas.

SAE Wilson 95% CI partially overlaps with the 95% direct Wilson CI: 28 areas.

SAE Wilson 95% CI and the 95% direct Wilson CI do not overlap: 0 areas.

SAE standard error is less than the direct standard error: 125 areas.

SAE standard error is greater than the (nonzero) direct standard error: 0 areas.

Direct standard error is zero: 8 areas.

Proportion of SAE variance due to ACS sampling error: min = 0.88%; med = 36.86%; max = 79.27%.

Proportion of SAE variance due to sampling error in regression coefficient estimates: min = 18.26%; med = 55.90%; max = 96.89%.

Proportion of SAE variance due to model selection: min = 0.16%; med = 3.38%; max = 34.93%.

Proportion of SAE variance due to area random effects: <identically zero>