



## Indicator 10: Ever had asthma

Internal variable name: outc10\_asthma

### Section 1: Definition

Definition: (Ever told) you had asthma?

### Section 2: Predictive models

	Mixed, demos only	Logit, no area effects	Mixed with area covariates
	b/se	b/se	b/se
Outcome 10: Ever had asthma			
Non-Hispanic Black vs. Non-Hispanic White	0.1677 (0.1107)	0.1281 (0.1197)	0.1281 (0.1081)
Non-Hispanic Asian vs. Non-Hispanic White	-0.4621 (0.4014)	-0.4858 (0.3665)	-0.4858 (0.3872)
Non-Hispanic Other vs. Non-Hispanic White	0.3958* (0.1617)	0.4010* (0.1824)	0.4010* (0.1604)
Hispanic vs. Non-Hispanic White	-0.1437 (0.2177)	-0.1205 (0.2502)	-0.1205 (0.2160)
Female	0.4571*** (0.1085)	0.4527*** (0.0948)	0.4527*** (0.1088)
Age 18-24 vs. 65+	0.5324** (0.1774)	0.5208** (0.1634)	0.5208** (0.1762)
Age 25-34 vs. 65+	0.1197 (0.1459)	0.1211 (0.1453)	0.1211 (0.1486)
Age 35-44 vs. 65+	0.0311 (0.1195)	0.0352 (0.1401)	0.0352 (0.1195)
Age 45-54 vs. 65+	0.0718 (0.1183)	0.0743 (0.1200)	0.0743 (0.1168)
Age 55-64 vs. 65+	0.0103 (0.1158)	0.0012 (0.1137)	0.0012 (0.1147)
Oral Cancer Female Rate		-0.0184 (0.0161)	-0.0184 (0.0166)
% rent >30% of income		0.0220* (0.0104)	0.0220* (0.0100)
Esophagus Cancer Male Rate		0.0745 (0.0510)	0.0745 (0.0517)
{% rent >30% of income}		-0.0012	-0.0012

Indicator 10: Ever had Asthma



interacted with {Esophagus Cancer Male Rate}		(0.0010)	(0.0011)
Non-stratified water domain index		0.2883*** (0.0867)	0.2883*** (0.0853)
{Oral Cancer Female Rate}		-0.0379** (0.0127)	-0.0379** (0.0127)
interacted with {Non-stratified water domain index}			
Intercept	-2.3210*** (0.1162)	-3.4173*** (0.5166)	-3.4173*** (0.4881)
Area effect variance	0.0299 (0.0274)		0.0000 (0.0000)

Number of alternative models used to estimate model error = 6.



### Section 3: Results

County name	County FIPS	Direct estimate	Direct 95% CI	SAE composite	SAE 95% CI
Augusta County	51015	8.0%	(4.4%, 14.0%)	9.8%	(8.3%, 11.6%)
Bath County	51017	4.3%	(1.7%, 39.0%)	6.4%	(3.5%, 11.4%)
Caroline County	51033	12.5%	(5.3%, 32.5%)	14.2%	(8.6%, 22.6%)
Clarke County	51043	6.7%	(1.1%, 32.4%)	14.4%	(10.7%, 19.0%)
Culpeper County	51047	10.1%	(4.7%, 20.4%)	13.6%	(11.7%, 15.8%)
Fauquier County	51061	17.8%	(10.0%, 29.6%)	14.4%	(11.8%, 17.4%)
Frederick County	51069	16.9%	(10.1%, 26.8%)	12.3%	(10.1%, 14.8%)
Highland County	51091	0.0%	(0.0%, 83.2%)	5.2%	(3.1%, 8.6%)
King George County	51099	13.6%	(5.0%, 39.3%)	16.9%	(11.9%, 23.4%)
Madison County	51113	4.8%	(2.3%, 25.3%)	11.3%	(8.0%, 15.6%)
Orange County	51137	18.3%	(6.3%, 42.8%)	12.5%	(10.0%, 15.5%)
Page County	51139	38.8%	(14.4%, 70.4%)	13.0%	(10.6%, 15.8%)
Rappahannock County	51157	32.0%	(11.9%, 62.2%)	13.5%	(9.8%, 18.3%)
Rockbridge County	51163	28.3%	(13.5%, 50.1%)	12.7%	(10.2%, 15.7%)
Rockingham County	51165	4.4%	(2.4%, 11.1%)	9.1%	(7.6%, 10.7%)
Shenandoah County	51171	22.6%	(11.2%, 40.2%)	13.6%	(11.8%, 15.6%)
Spotsylvania County	51177	11.7%	(5.8%, 22.1%)	12.0%	(10.8%, 13.3%)
Stafford County	51179	16.2%	(9.8%, 25.6%)	14.4%	(12.5%, 16.6%)
Warren County	51187	2.8%	(1.6%, 17.1%)	13.2%	(10.8%, 16.0%)
Buena Vista City	51530	0.0%	(-0.0%, 89.6%)	11.1%	(5.7%, 20.7%)
Fredericksburg City	51630	12.5%	(5.9%, 33.7%)	11.9%	(10.1%, 13.9%)
Harrisonburg City	51660	21.8%	(4.8%, 60.4%)	12.0%	(10.2%, 13.9%)
Lexington City	51678	0.0%	(0.0%, 99.4%)	61.4%	(28.6%, 86.3%)
Staunton City	51790	30.2%	(6.8%, 71.8%)	11.8%	(9.7%, 14.3%)
Waynesboro City	51820	49.7%	(21.0%, 78.6%)	15.3%	(9.2%, 24.3%)
Winchester City	51840	9.6%	(2.1%, 34.2%)	10.1%	(7.7%, 13.1%)

Indicator 10: Ever had Asthma



County name	County FIPS	Direct estimate	Direct 95% CI	SAE composite	SAE 95% CI
Albemarle County	51003	10.1%	(4.9%, 19.7%)	12.2%	(10.8%, 13.7%)
Alleghany County	51005	12.1%	(4.4%, 29.2%)	7.6%	(6.1%, 9.4%)
Amherst County	51009	12.5%	(4.7%, 29.3%)	10.5%	(9.1%, 12.0%)
Appomattox County	51011	7.5%	(1.6%, 29.4%)	10.3%	(8.6%, 12.2%)
Arlington City	51013	12.2%	(7.3%, 19.7%)	9.9%	(8.3%, 11.9%)
Bedford County	51019	11.5%	(5.5%, 22.5%)	12.4%	(9.7%, 15.7%)
Botetourt County	51023	4.4%	(1.1%, 16.2%)	8.3%	(6.3%, 11.0%)
Campbell County	51031	19.5%	(9.6%, 35.4%)	9.5%	(8.1%, 11.2%)
Craig County	51045	0.0%	(0.0%, 73.6%)	22.4%	(8.1%, 48.7%)
Fairfax County	51059	8.8%	(6.1%, 12.6%)	9.8%	(8.0%, 11.9%)
Fluvanna County	51065	22.9%	(7.2%, 53.1%)	15.4%	(10.6%, 21.9%)
Greene County	51079	0.0%	(0.0%, 21.7%)	9.5%	(7.5%, 11.8%)
Loudoun County	51107	14.0%	(9.0%, 21.2%)	10.4%	(8.7%, 12.2%)
Louisa County	51109	4.7%	(1.8%, 19.3%)	12.2%	(10.1%, 14.6%)
Nelson County	51125	8.4%	(2.2%, 27.7%)	11.4%	(9.6%, 13.5%)
Prince William County	51153	11.9%	(6.5%, 20.5%)	12.4%	(10.6%, 14.4%)
Roanoke County	51161	13.7%	(8.4%, 21.7%)	12.2%	(10.5%, 14.2%)
Alexandria City	51510	10.1%	(5.8%, 17.2%)	8.7%	(7.3%, 10.3%)
Charlottesville City	51540	5.2%	(2.5%, 29.0%)	20.1%	(16.0%, 25.0%)
Covington City	51580	0.0%	(0.0%, 99.4%)	11.8%	(8.9%, 15.5%)
Fairfax City	51600	14.9%	(7.8%, 26.6%)	14.7%	(12.2%, 17.6%)
Falls Church City	51610	0.0%	(0.0%, 62.3%)	6.5%	(5.0%, 8.4%)
Lynchburg City	51680	8.7%	(2.4%, 27.0%)	12.1%	(10.0%, 14.6%)
Manassas City	51683	0.0%	(0.0%, 31.6%)	11.9%	(10.2%, 13.8%)
Manassas Park City	51685	81.9%	(2.5%, 99.6%)	7.6%	(6.1%, 9.4%)
Salem City	51775	19.9%	(5.0%, 54.0%)	14.6%	(12.8%, 16.7%)

Indicator 10: Ever had Asthma



County name	County FIPS	Direct estimate	Direct 95% CI	SAE composite	SAE 95% CI
Bland County	51021	18.3%	(4.0%, 54.7%)	7.2%	(5.8%, 9.1%)
Buchanan County	51027	24.2%	(13.3%, 39.9%)	13.4%	(10.5%, 16.8%)
Carroll County	51035	17.7%	(7.9%, 34.9%)	15.4%	(12.5%, 18.8%)
Dickenson County	51051	8.1%	(3.8%, 23.5%)	11.2%	(8.7%, 14.4%)
Floyd County	51063	16.1%	(7.1%, 32.5%)	11.5%	(8.5%, 15.5%)
Franklin County	51067	20.4%	(7.4%, 45.1%)	14.4%	(11.0%, 18.5%)
Giles County	51071	9.8%	(3.3%, 26.0%)	16.5%	(12.3%, 21.6%)
Grayson County	51077	11.9%	(5.1%, 34.7%)	7.6%	(6.1%, 9.4%)
Henry County	51089	11.2%	(7.1%, 20.3%)	13.9%	(11.8%, 16.4%)
Lee County	51105	5.2%	(2.8%, 20.9%)	12.5%	(10.9%, 14.2%)
Montgomery County	51121	14.4%	(7.6%, 25.6%)	15.2%	(12.8%, 18.0%)
Patrick County	51141	1.2%	(0.7%, 16.3%)	8.8%	(7.2%, 10.7%)
Pittsylvania County	51143	14.9%	(8.5%, 24.8%)	16.6%	(13.9%, 19.8%)
Pulaski County	51155	14.2%	(6.7%, 27.8%)	15.7%	(12.9%, 19.0%)
Russell County	51167	13.4%	(6.1%, 26.7%)	13.5%	(11.3%, 16.0%)
Scott County	51169	13.9%	(7.0%, 25.7%)	11.4%	(9.4%, 13.7%)
Smyth County	51173	16.9%	(8.1%, 31.9%)	12.5%	(11.0%, 14.2%)
Tazewell County	51185	7.7%	(3.4%, 16.6%)	9.9%	(8.5%, 11.5%)
Washington County	51191	7.8%	(3.5%, 16.4%)	9.2%	(7.8%, 10.7%)
Wise County	51195	23.9%	(14.1%, 37.5%)	15.9%	(13.4%, 18.8%)
Wythe County	51197	3.5%	(1.6%, 13.8%)	10.1%	(8.1%, 12.6%)
Bristol City	51520	20.4%	(6.4%, 58.3%)	12.9%	(9.2%, 17.9%)
Danville City	51590	14.4%	(4.1%, 40.2%)	14.2%	(11.2%, 17.7%)
Galax City	51640	0.0%	(0.0%, 70.9%)	6.9%	(5.2%, 8.9%)
Martinsville City	51690	0.0%	(0.0%, 47.8%)	9.5%	(7.6%, 11.9%)
Norton City	51720	0.0%	(0.0%, 69.6%)	24.8%	(10.9%, 47.1%)
Radford City	51750	33.7%	(6.3%, 79.2%)	25.2%	(18.2%, 33.8%)
Roanoke City	51770	15.6%	(8.8%, 26.3%)	14.8%	(12.6%, 17.3%)

Indicator 10: Ever had Asthma



County name	County FIPS	Direct estimate	Direct 95% CI	SAE composite	SAE 95% CI
Amelia County	51007	1.7%	(0.9%, 24.9%)	14.1%	(11.5%, 17.2%)
Brunswick County	51025	15.9%	(4.7%, 42.1%)	15.2%	(11.3%, 20.0%)
Buckingham County	51029	39.1%	(17.2%, 66.6%)	27.1%	(19.5%, 36.2%)
Charles City County	51036	7.1%	(1.9%, 44.3%)	11.4%	(8.7%, 14.8%)
Charlotte County	51037	29.3%	(8.7%, 64.3%)	12.5%	(10.9%, 14.4%)
Chesterfield County	51041	10.7%	(7.5%, 15.1%)	11.2%	(10.1%, 12.5%)
Cumberland County	51049	16.4%	(5.0%, 42.4%)	14.9%	(11.1%, 19.7%)
Dinwiddie County	51053	5.2%	(3.3%, 21.2%)	9.1%	(6.5%, 12.7%)
Goochland County	51075	18.9%	(4.0%, 56.8%)	13.6%	(11.3%, 16.4%)
Greensville County	51081	12.1%	(1.7%, 51.8%)	8.6%	(7.0%, 10.5%)
Halifax County	51083	5.6%	(3.6%, 15.6%)	16.1%	(12.7%, 20.1%)
Hanover County	51085	11.1%	(6.2%, 19.1%)	14.8%	(12.3%, 17.8%)
Henrico County	51087	10.6%	(7.3%, 15.2%)	13.8%	(12.0%, 15.8%)
Lunenburg County	51111	17.1%	(5.0%, 44.8%)	11.3%	(9.1%, 13.8%)
Mecklenburg County	51117	14.8%	(5.0%, 36.1%)	15.7%	(12.8%, 19.2%)
New Kent County	51127	2.2%	(1.1%, 24.3%)	8.3%	(5.9%, 11.8%)
Nottoway County	51135	17.0%	(3.6%, 52.6%)	13.4%	(6.3%, 26.4%)
Powhatan County	51145	0.0%	(-0.0%, 32.8%)	13.3%	(11.5%, 15.4%)
Prince Edward County	51147	29.4%	(12.4%, 55.1%)	17.2%	(12.9%, 22.4%)
Prince George County	51149	10.7%	(2.2%, 38.4%)	12.4%	(11.1%, 13.9%)
Surry County	51181	16.7%	(2.8%, 57.8%)	7.3%	(5.6%, 9.4%)
Sussex County	51183	14.5%	(5.5%, 33.0%)	9.7%	(7.8%, 12.0%)
Colonial Heights City	51570	31.4%	(8.7%, 68.6%)	15.0%	(13.2%, 17.0%)
Emporia City	51595	0.0%	(0.0%, 68.6%)	9.2%	(7.5%, 11.4%)
Hopewell City	51670	3.8%	(0.6%, 20.1%)	9.1%	(7.4%, 11.1%)
Petersburg City	51730	6.5%	(2.0%, 18.8%)	13.7%	(10.5%, 17.6%)
Richmond City	51760	12.7%	(8.2%, 19.2%)	13.8%	(12.2%, 15.7%)

Indicator 10: Ever had Asthma

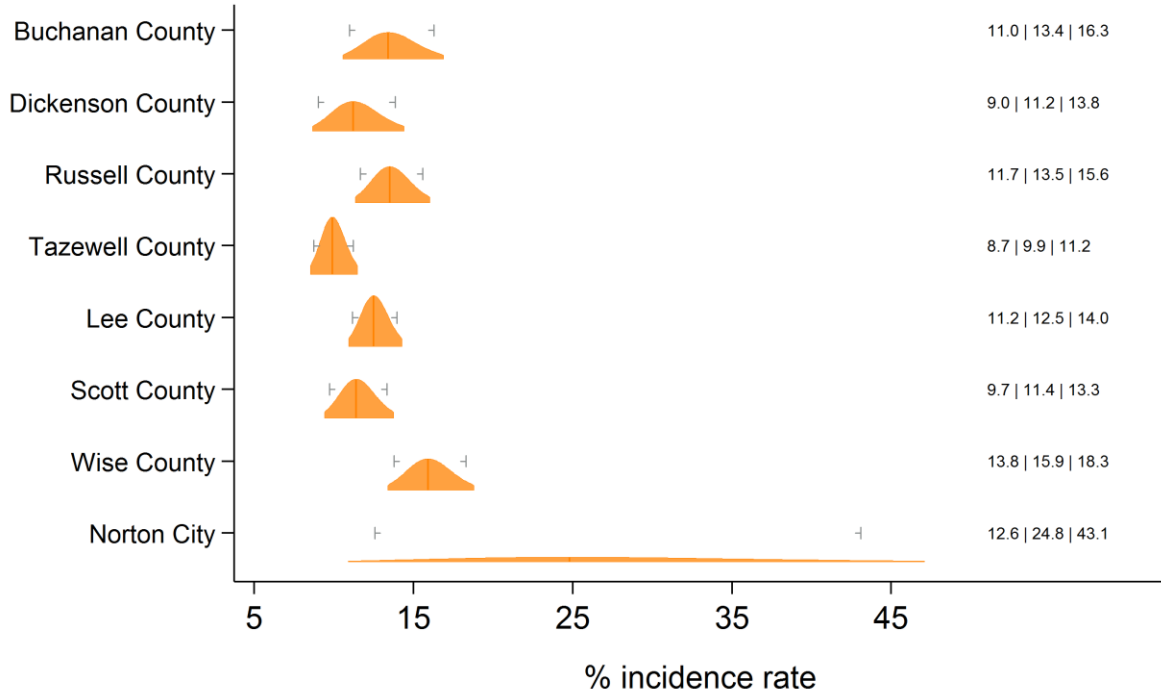


County name	County FIPS	Direct estimate	Direct 95% CI	SAE composite	SAE 95% CI
Accomack County	51001	17.2%	(8.6%, 31.6%)	12.6%	(10.1%, 15.7%)
Essex County	51057	16.3%	(3.2%, 53.8%)	10.5%	(8.6%, 12.7%)
Gloucester County	51073	19.7%	(8.6%, 39.1%)	12.4%	(10.5%, 14.7%)
Isle of Wight County	51093	11.2%	(5.0%, 23.3%)	13.7%	(12.1%, 15.3%)
James City County	51095	14.7%	(7.4%, 27.3%)	14.1%	(12.0%, 16.6%)
King and Queen County	51097	56.8%	(16.4%, 89.8%)	12.3%	(6.3%, 22.6%)
King William County	51101	25.2%	(8.4%, 55.4%)	14.3%	(12.1%, 16.8%)
Lancaster County	51103	16.1%	(4.3%, 44.9%)	12.4%	(10.9%, 14.2%)
Mathews County	51115	29.8%	(13.4%, 53.8%)	11.4%	(7.6%, 16.7%)
Middlesex County	51119	0.0%	(-0.0%, 48.1%)	19.4%	(13.0%, 28.0%)
Northampton County	51131	12.9%	(3.1%, 40.6%)	13.1%	(11.4%, 15.1%)
Northumberland County	51133	39.8%	(18.6%, 65.6%)	18.0%	(7.3%, 38.0%)
Richmond County	51159	23.6%	(10.6%, 44.6%)	12.1%	(9.8%, 14.8%)
Southampton County	51175	7.4%	(1.8%, 26.1%)	12.4%	(10.0%, 15.3%)
Westmoreland County	51193	11.9%	(3.6%, 32.8%)	10.8%	(8.8%, 13.2%)
York County	51199	2.1%	(0.9%, 10.4%)	11.7%	(9.8%, 14.0%)
Chesapeake City	51550	12.0%	(7.9%, 17.8%)	11.4%	(10.2%, 12.8%)
Franklin City	51620	11.4%	(3.3%, 33.1%)	12.3%	(8.3%, 17.9%)
Hampton City	51650	20.3%	(12.8%, 30.6%)	19.7%	(16.8%, 23.0%)
Newport News City	51700	17.4%	(11.0%, 26.5%)	13.2%	(11.9%, 14.5%)
Norfolk City	51710	10.9%	(6.2%, 18.4%)	14.8%	(12.8%, 17.0%)
Poquoson City	51735	11.9%	(2.3%, 62.6%)	9.2%	(7.6%, 11.0%)
Portsmouth City	51740	15.4%	(9.3%, 24.5%)	11.5%	(9.4%, 13.9%)
Suffolk City	51800	13.0%	(6.0%, 25.7%)	12.2%	(10.8%, 13.7%)
Virginia Beach City	51810	11.5%	(8.1%, 16.1%)	13.4%	(12.1%, 14.7%)
Williamsburg City	51830	0.0%	(0.0%, 55.7%)	18.3%	(6.7%, 41.2%)



Section 4: Graphical representation

Lifetime asthma  
Cumberland Plateau and Lenowisco HDs

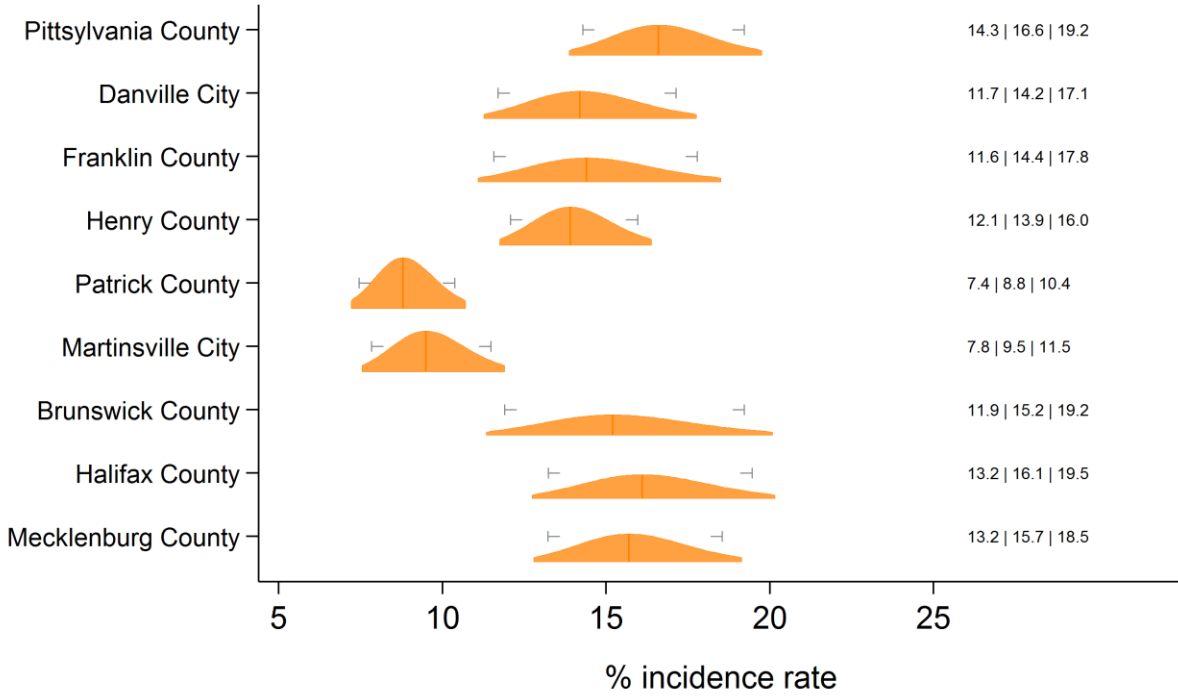


Text at right: 1-sided 95% LCB | Point Estimate | 1-sided 95% UCB  
 Gray markers: 90% confidence interval





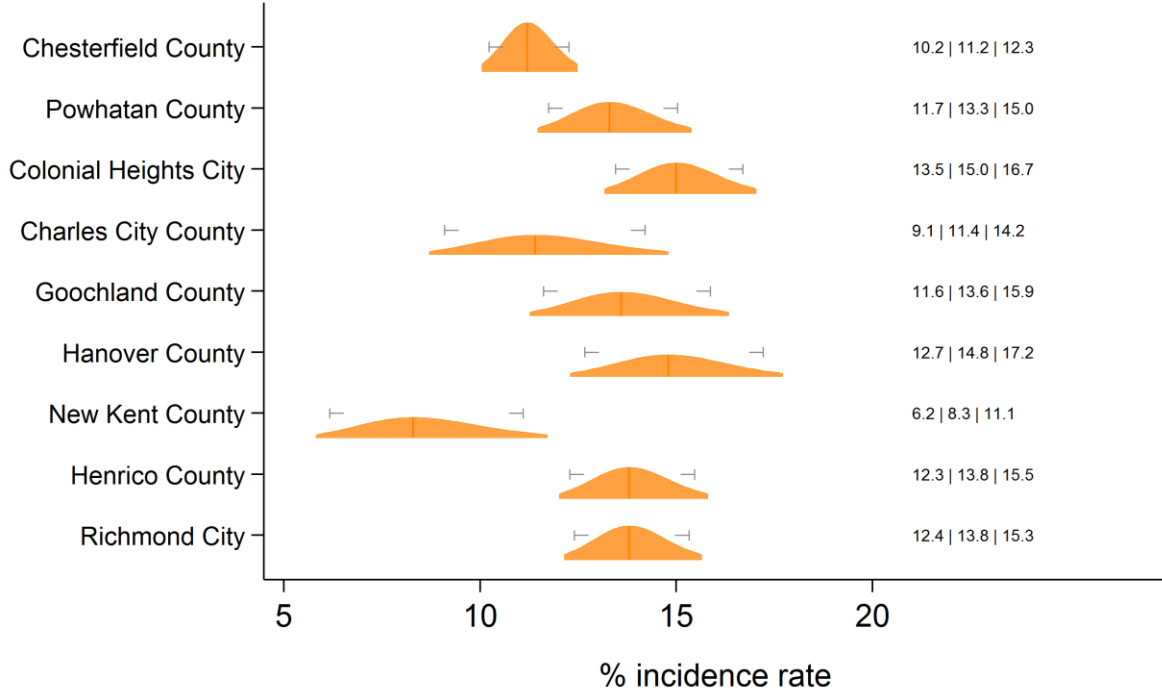
### Lifetime asthma Pittsylvania/Danville, Southside and West Piedmont HDs



Text at right: 1-sided 95% LCB | Point Estimate | 1-sided 95% UCB  
 Gray markers: 90% confidence interval



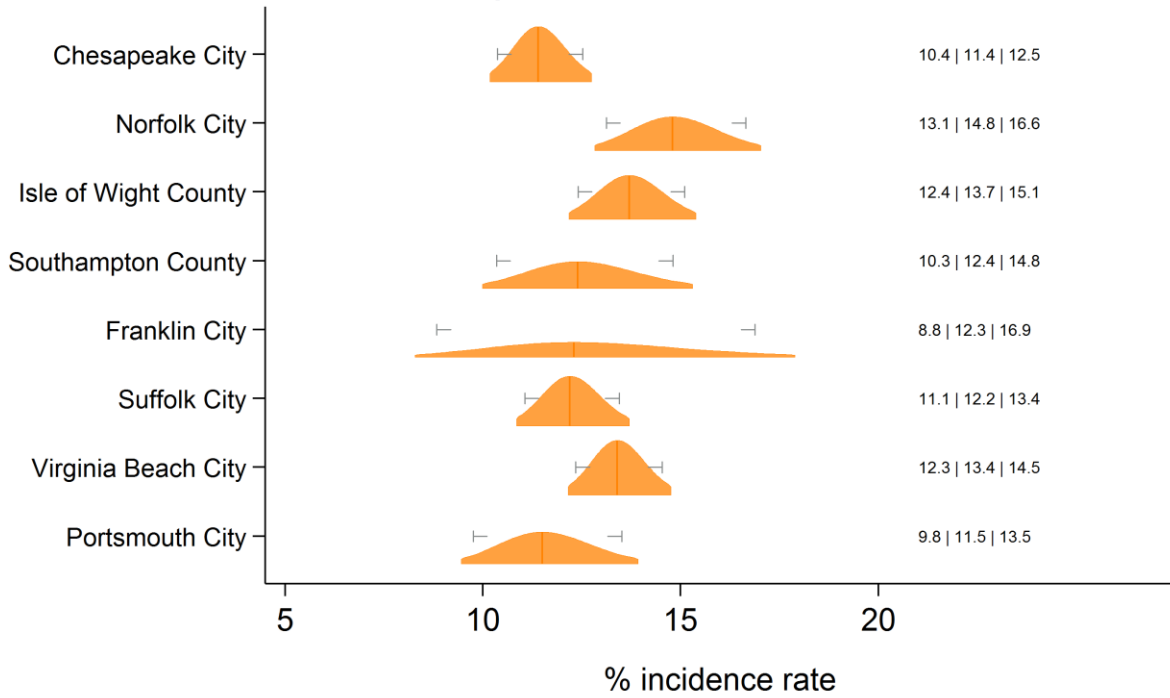
### Lifetime asthma Chesterfield, Chickahominy, Henrico and Richmond HDs



Text at right: 1-sided 95% LCB | Point Estimate | 1-sided 95% UCB  
 Gray markers: 90% confidence interval



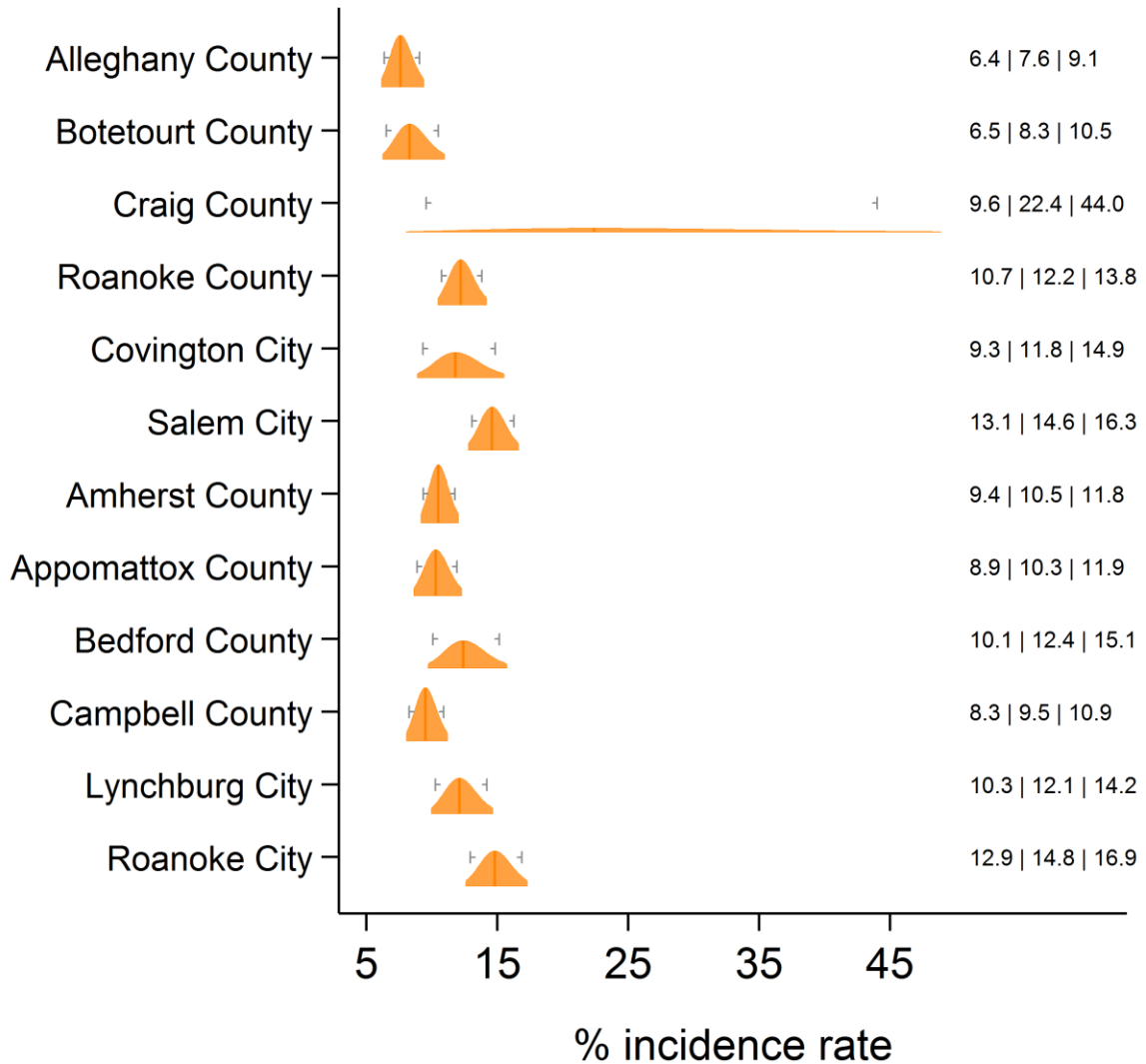
### Lifetime asthma Norfolk, Portsmouth, Chesapeake, VA Beach, W. Tidewater HDs



Text at right: 1-sided 95% LCB | Point Estimate | 1-sided 95% UCB  
 Gray markers: 90% confidence interval



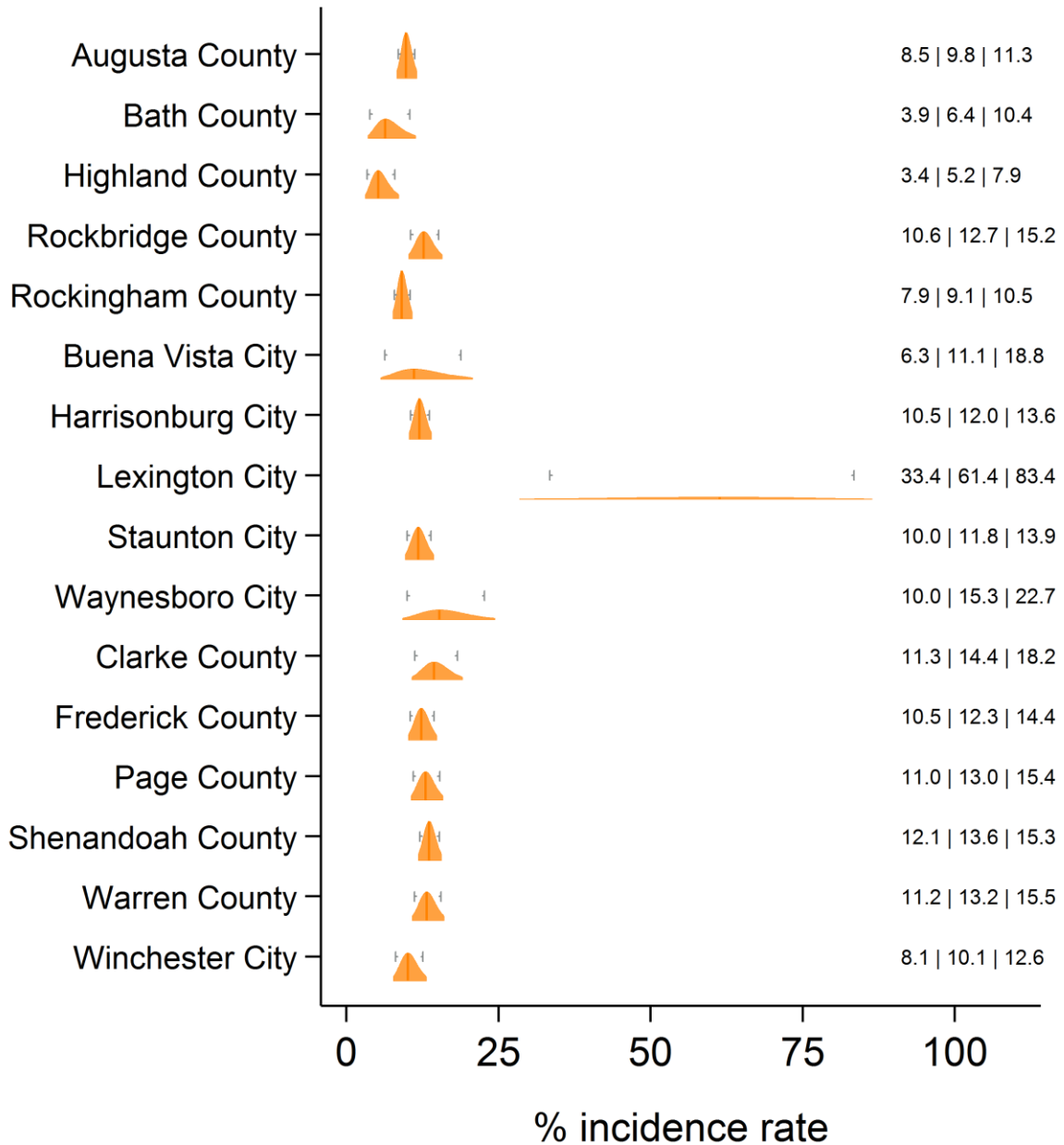
## Lifetime asthma Alleghany, Roanoke and Central Virginia HDs



Text at right: 1-sided 95% LCB | Point Estimate | 1-sided 95% UCB  
 Gray markers: 90% confidence interval



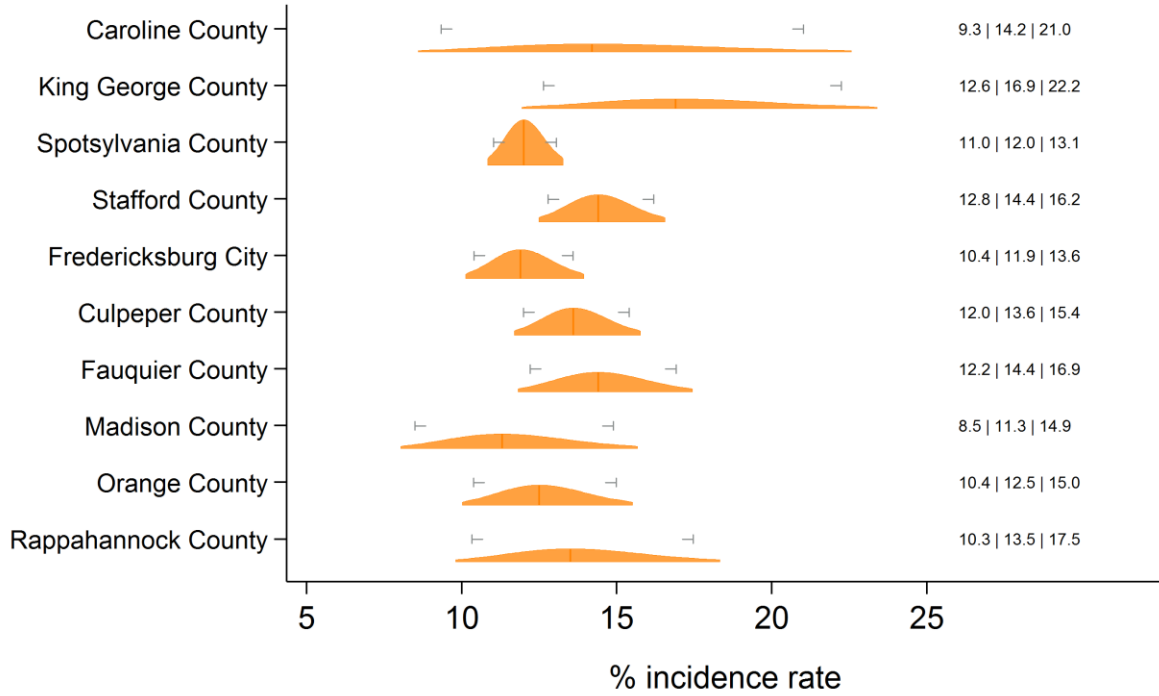
## Lifetime asthma Central Shenandoah and Lord Fairfax HDs



Text at right: 1-sided 95% LCB | Point Estimate | 1-sided 95% UCB  
 Gray markers: 90% confidence interval



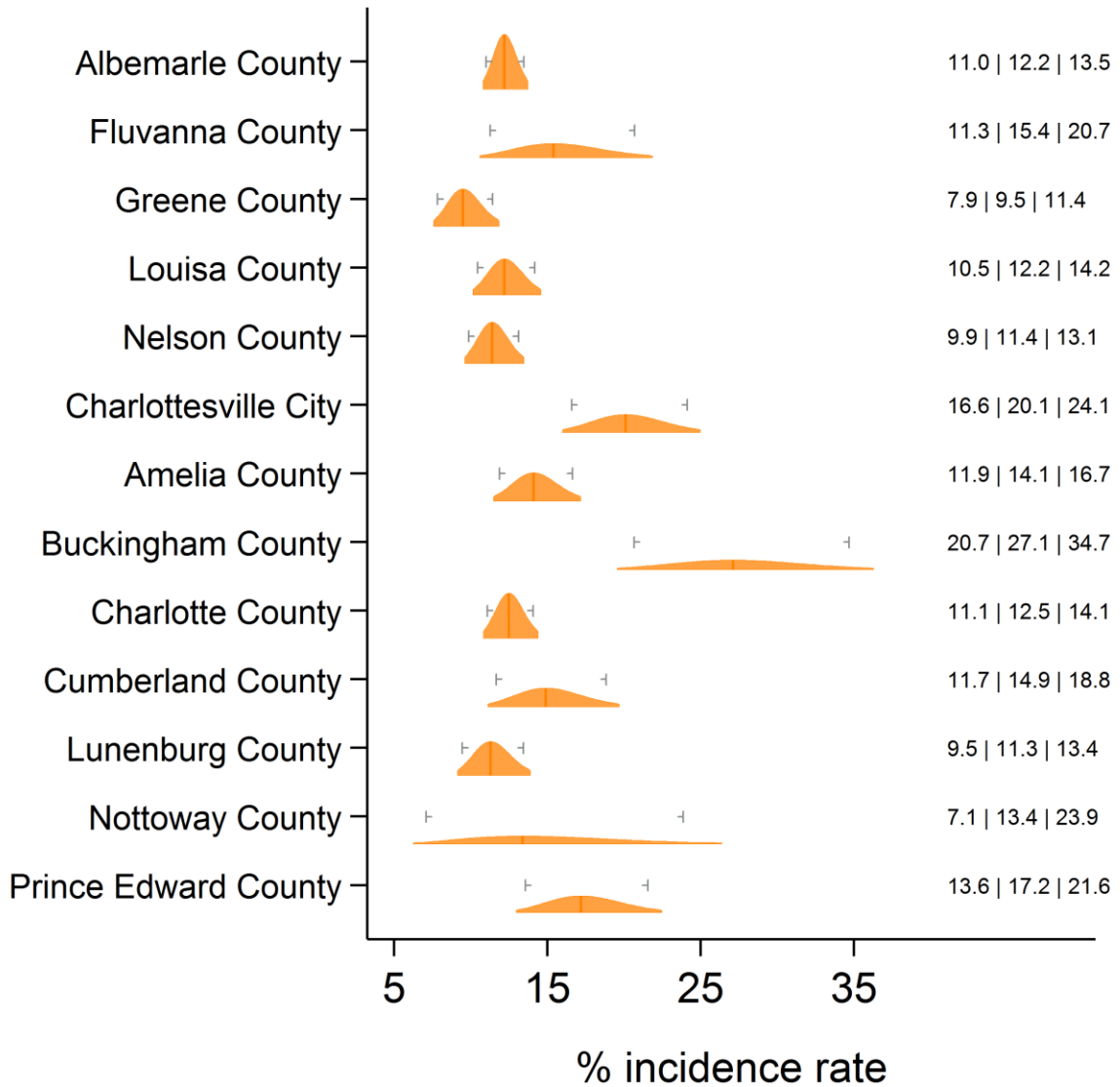
## Lifetime asthma Rappahannock/Rapidan and Rappahannock HDs



Text at right: 1-sided 95% LCB | Point Estimate | 1-sided 95% UCB  
 Gray markers: 90% confidence interval



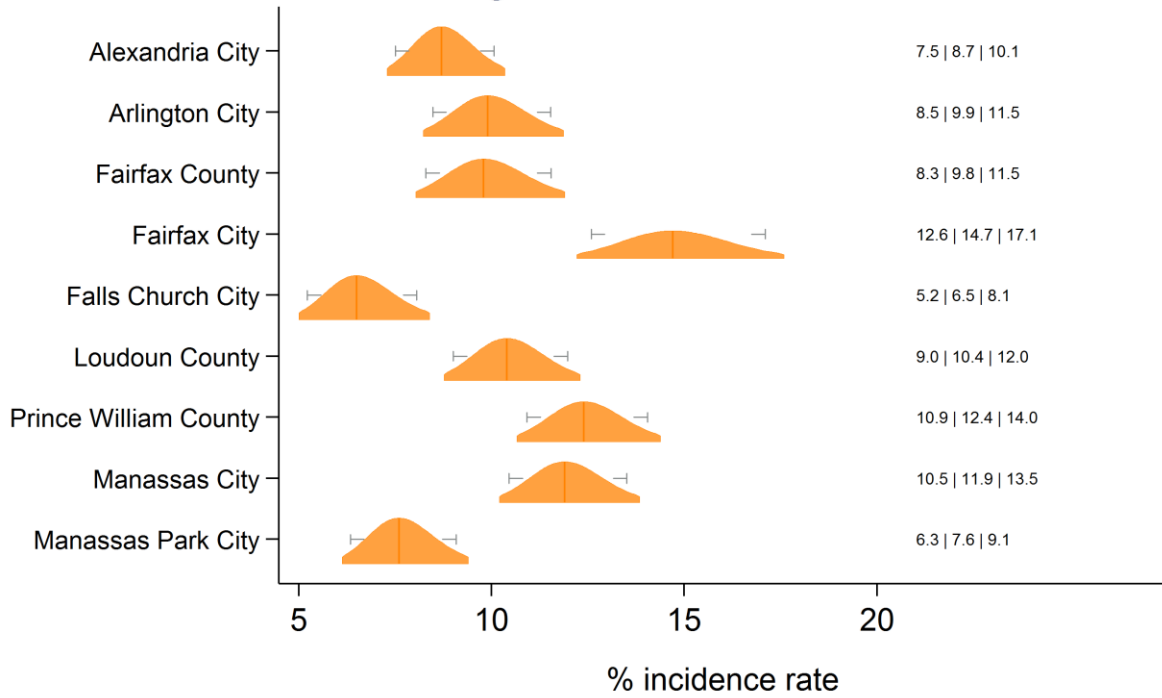
## Lifetime asthma Thomas Jefferson and Piedmont HDs



Text at right: 1-sided 95% LCB | Point Estimate | 1-sided 95% UCB  
 Gray markers: 90% confidence interval



### Lifetime asthma Alexandria, Fairfax, Arlington, Loudon, Prince William HDs

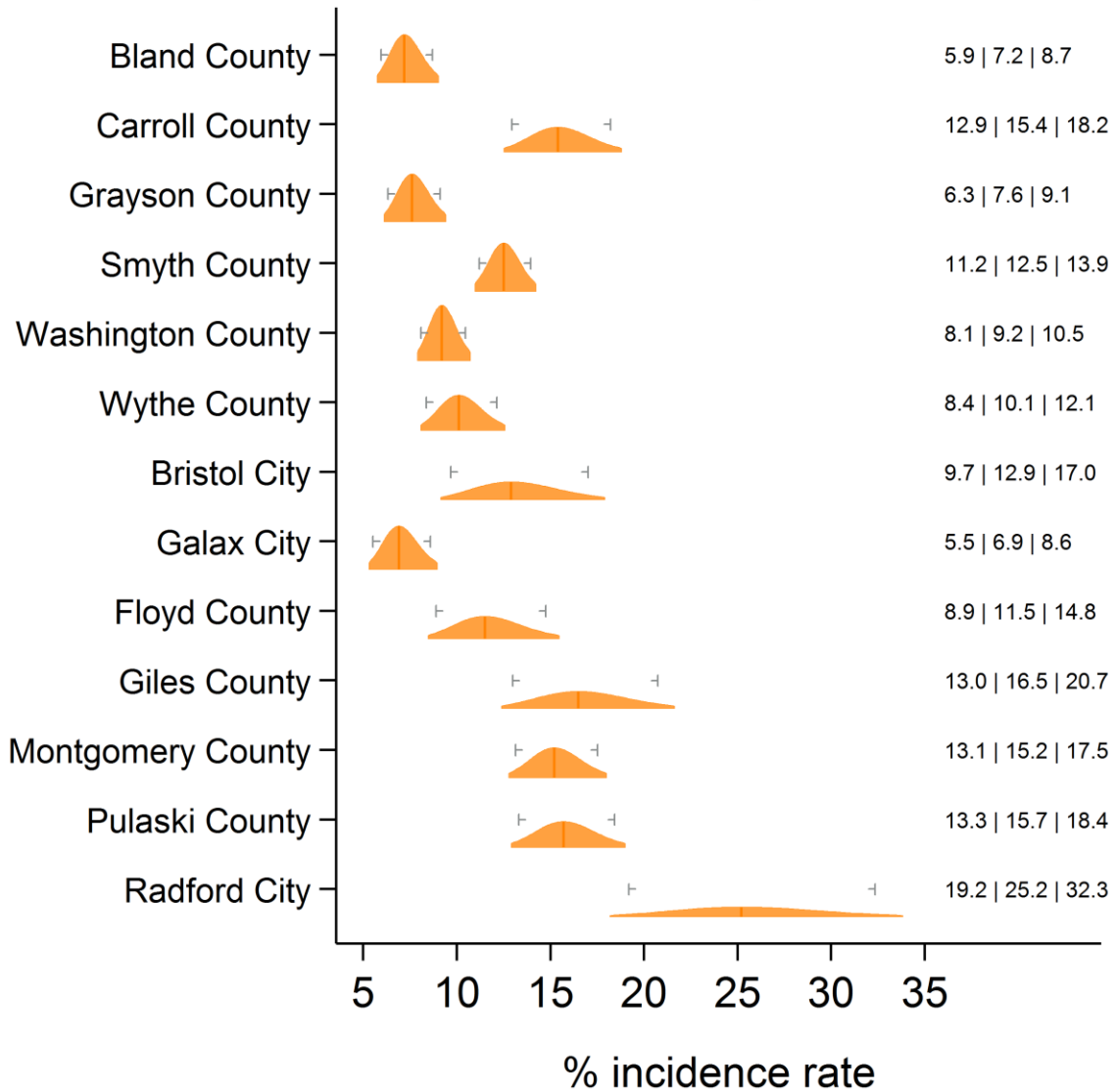


Text at right: 1-sided 95% LCB | Point Estimate | 1-sided 95% UCB  
 Gray markers: 90% confidence interval





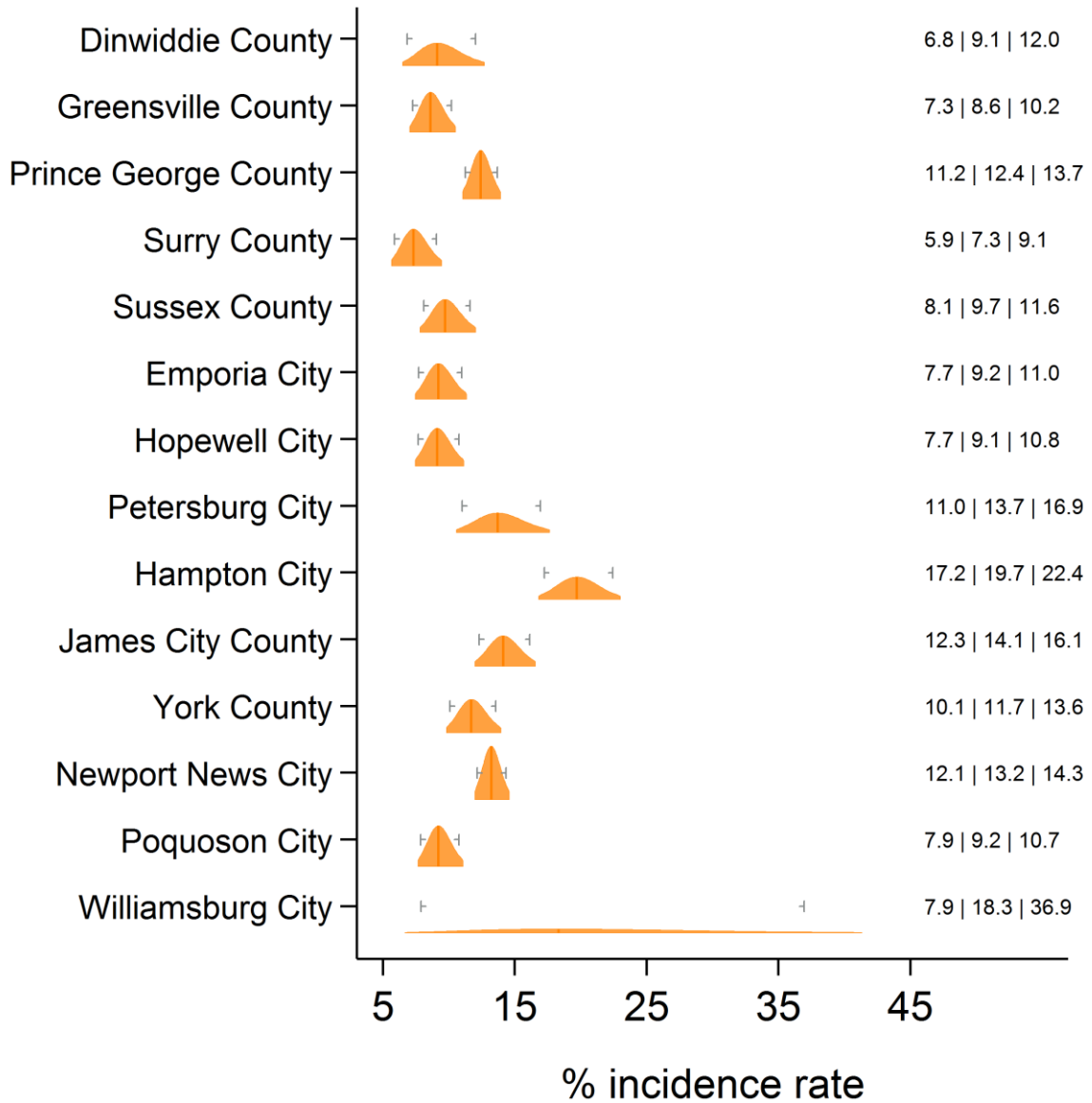
## Lifetime asthma New River and Mount Rogers HDs



Text at right: 1-sided 95% LCB | Point Estimate | 1-sided 95% UCB  
 Gray markers: 90% confidence interval



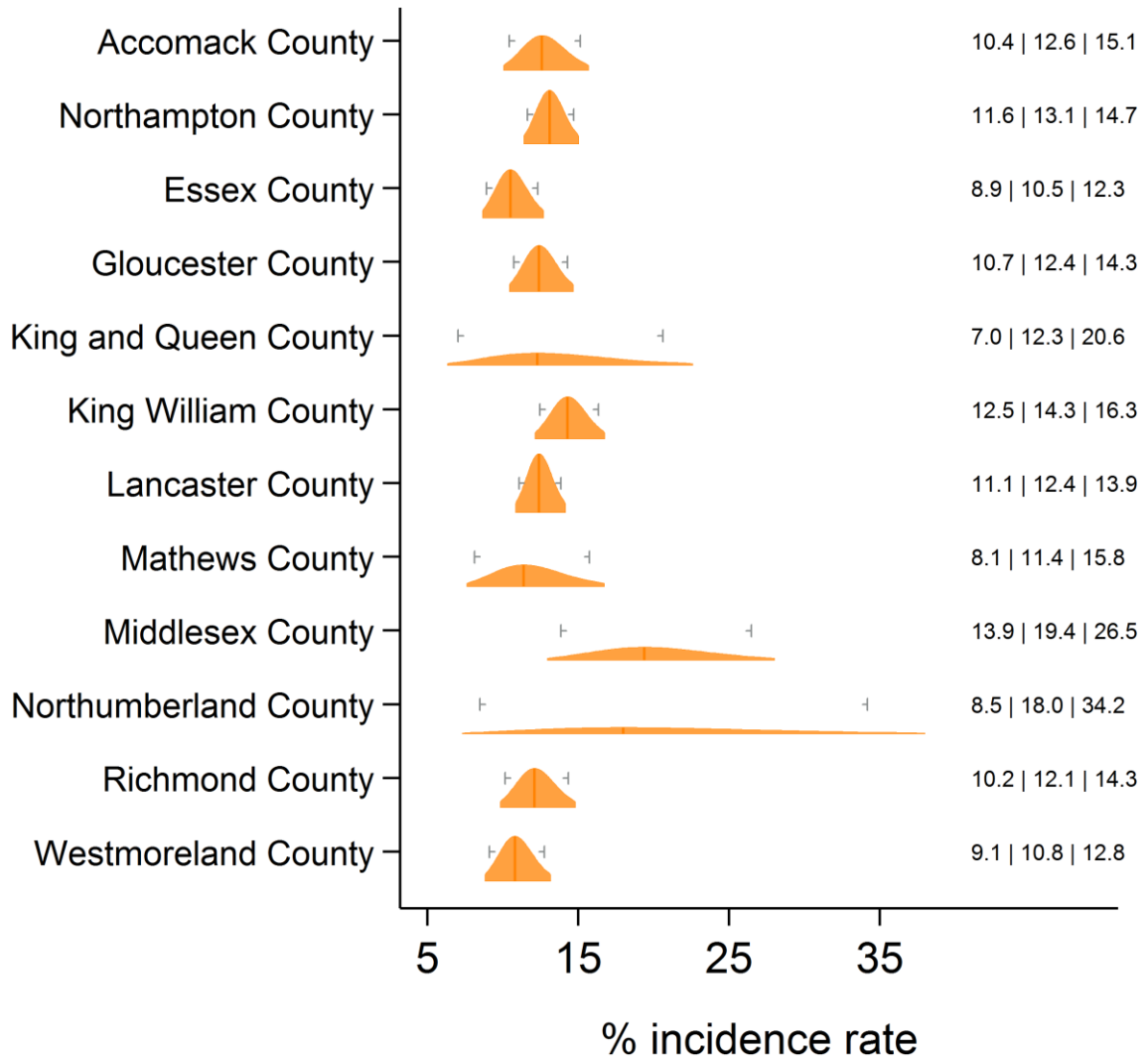
## Lifetime asthma Crater, Peninsula and Hampton HDs



Text at right: 1-sided 95% LCB | Point Estimate | 1-sided 95% UCB  
 Gray markers: 90% confidence interval



## Lifetime asthma Eastern Shore and Three Rivers HDs



Text at right: 1-sided 95% LCB | Point Estimate | 1-sided 95% UCB  
 Gray markers: 90% confidence interval



## Section 5: Additional diagnostics

Direct estimate is inside the 95% SAE Wilson CI: 34 areas.

Direct estimate is outside the 95% SAE Wilson CI: 99 areas.

SAE estimate is inside the 95% direct Wilson CI: 124 areas.

SAE estimate is outside the 95% direct Wilson CI: 9 areas.

SAE Wilson 95% CI is fully inside the 95% direct Wilson CI: 117 areas.

SAE Wilson 95% CI partially overlaps with the 95% direct Wilson CI: 16 areas.

SAE Wilson 95% CI and the 95% direct Wilson CI do not overlap: 0 areas.

SAE standard error is less than the direct standard error: 118 areas.

SAE standard error is greater than the (nonzero) direct standard error: 0 areas.

Direct standard error is zero: 15 areas.

Proportion of SAE variance due to ACS sampling error: min = 0.08%; med = 2.71%; max = 11.32%.

Proportion of SAE variance to sampling error in regression coefficient estimates: min = 21.96%; med = 90.10%; max = 99.51%.

Proportion of SAE variance due to model selection: min = 0.27%; med = 5.78%; max = 77.77%.