

Outcome 15: Diagnosed with Depression

Internal variable name: outc15_depression

Definition: (Ever told) you that you have a depressive disorder, including depression, major depression, dysthymia, or minor depression?

Predictive models

	Mixed, demos only	Logit, no area effects	Mixed with area covariates
	b/se	b/se	b/se
Outcome 15: Diagnosed with Depression			
NH White	0.0000 (.)	0.0000 (.)	0.0000 (.)
NH Black vs. NH White	-0.3402*** (0.0957)	-0.2957** (0.1115)	-0.2957** (0.0952)
NH Asian vs. NH White	-1.1481*** (0.1645)	-1.0311*** (0.2662)	-1.0311*** (0.1687)
NH Other vs. NH White	-0.0477 (0.1189)	-0.0031 (0.1770)	-0.0031 (0.1183)
Hispanic vs. NH White	-0.9866*** (0.1842)	-0.8963*** (0.1904)	-0.8963*** (0.1819)
SEX OF RESPONDENT=1	0.0000 (.)	0.0000 (.)	0.0000 (.)
Female	0.7798*** (0.0978)	0.7730*** (0.0817)	0.7730*** (0.0971)
Age 18-34 vs. 65+	0.8652*** (0.1150)	0.8786*** (0.1104)	0.8786*** (0.1134)
Age 35-44 vs. 65+	0.4861*** (0.1245)	0.4987*** (0.1204)	0.4987*** (0.1255)
Age 45-54 vs. 65+	0.4502*** (0.1077)	0.4653*** (0.1177)	0.4653*** (0.1062)
Age 55-64 vs. 65+	0.3734*** (0.1069)	0.3660*** (0.1079)	0.3660*** (0.1056)
65+	0.0000 (.)	0.0000 (.)	0.0000 (.)
Crude mortality rate of accidents (unintentional injuries) per 10K		0.0868*** (0.0251)	0.0868** (0.0264)
VA BRFSS 2014 SAE outc18_tobacco_user		1.1642	1.1642

		(0.6372)	(0.5962)
_cons	-2.2740***	-2.9184***	-2.9184***
	(0.0876)	(0.1619)	(0.1583)
Area effect variance			
var(_cons[FIPS_county])	0.0568		0.0000
	(0.0387)		(0.0000)

Number of alternative models used to estimate model error = 6.

Results by health districts

County name	County FIPS	Direct estimate	Direct 95% CI	SAE composite	SAE CI
Augusta County	51015	15.1%	(9.4%, 23.6%)	17.8%	(16.3%, 19.5%)
Bath County	51017	21.1%	(4.8%, 58.8%)	25.6%	(21.4%, 30.3%)
Caroline County	51033	14.5%	(4.7%, 36.7%)	14.4%	(13.0%, 16.0%)
Clarke County	51043	18.9%	(5.8%, 47.0%)	15.4%	(13.7%, 17.3%)
Culpeper County	51047	12.8%	(4.2%, 33.0%)	17.9%	(15.5%, 20.6%)
Fauquier County	51061	13.7%	(6.6%, 26.1%)	16.5%	(15.0%, 18.1%)
Frederick County	51069	24.9%	(14.6%, 39.0%)	17.6%	(15.9%, 19.4%)
Highland County	51091	0.0%	(-0.0%, 52.6%)	16.4%	(13.3%, 20.1%)
King George County	51099	30.5%	(13.8%, 54.7%)	19.0%	(17.2%, 20.9%)
Madison County	51113	16.0%	(5.0%, 40.6%)	16.5%	(14.8%, 18.4%)
Orange County	51137	32.0%	(15.7%, 54.4%)	26.1%	(19.8%, 33.5%)
Page County	51139	24.3%	(8.3%, 53.4%)	16.7%	(15.5%, 18.1%)
Rappahannock County	51157	53.9%	(19.6%, 84.9%)	19.4%	(16.7%, 22.5%)
Rockbridge County	51163	13.6%	(5.4%, 30.2%)	19.6%	(17.6%, 21.8%)
Rockingham County	51165	11.2%	(6.4%, 19.1%)	19.3%	(17.3%, 21.4%)
Shenandoah County	51171	6.6%	(3.4%, 18.0%)	23.4%	(19.9%, 27.3%)
Spotsylvania County	51177	7.1%	(3.3%, 14.5%)	16.3%	(15.2%, 17.5%)
Stafford County	51179	11.9%	(7.2%, 19.0%)	14.1%	(12.9%, 15.3%)
Warren County	51187	12.4%	(4.7%, 29.0%)	17.8%	(14.9%, 21.2%)
Buena Vista City	51530	26.7%	(2.9%, 81.5%)	18.2%	(14.9%, 22.1%)
Fredericksburg City	51630	15.5%	(6.1%, 34.2%)	16.5%	(14.7%, 18.4%)
Harrisonburg City	51660	30.1%	(11.3%, 59.3%)	17.0%	(15.4%, 18.7%)
Lexington City	51678	0.0%	(0.0%, 99.4%)	15.8%	(11.5%, 21.5%)
Staunton City	51790	32.2%	(9.3%, 68.7%)	18.5%	(16.2%, 21.0%)
Waynesboro	51820	77.2%	(20.9%, 96.0%)	19.7%	(17.7%, 22.0%)

City					
Winchester City	51840	17.3%	(2.7%, 61.2%)	19.2%	(17.2%, 21.5%)

County name	County FIPS	Direct estimate	Direct 95% CI	SAE composite	SAE CI
Albemarle County	51003	23.9%	(13.8%, 38.3%)	15.5%	(14.2%, 16.9%)
Alleghany County	51005	21.6%	(10.9%, 38.3%)	21.6%	(18.8%, 24.7%)
Amherst County	51009	23.6%	(11.5%, 42.5%)	16.8%	(15.0%, 18.9%)
Appomattox County	51011	36.4%	(21.6%, 54.3%)	20.7%	(18.2%, 23.4%)
Arlington City	51013	14.2%	(9.2%, 21.2%)	12.4%	(11.0%, 14.0%)
Bedford County	51019	16.1%	(9.0%, 27.1%)	18.2%	(16.7%, 19.9%)
Botetourt County	51023	15.5%	(5.5%, 36.6%)	18.7%	(17.1%, 20.3%)
Campbell County	51031	22.4%	(13.5%, 34.9%)	18.4%	(17.1%, 19.8%)
Craig County	51045	44.8%	(10.5%, 84.9%)	20.3%	(16.4%, 24.9%)
Fairfax County	51059	13.4%	(10.8%, 16.6%)	11.3%	(10.0%, 12.7%)
Fluvanna County	51065	7.5%	(3.3%, 29.3%)	16.1%	(14.8%, 17.5%)
Greene County	51079	6.7%	(2.8%, 43.0%)	16.3%	(14.3%, 18.5%)
Loudoun County	51107	8.8%	(6.4%, 13.0%)	11.9%	(10.6%, 13.3%)
Louisa County	51109	23.0%	(10.7%, 42.6%)	15.8%	(14.4%, 17.2%)
Nelson County	51125	17.7%	(4.4%, 49.8%)	21.1%	(18.5%, 24.0%)
Prince William County	51153	13.3%	(9.6%, 18.1%)	12.1%	(11.0%, 13.3%)
Roanoke County	51161	20.8%	(14.0%, 29.8%)	20.2%	(18.0%, 22.6%)
Alexandria City	51510	9.8%	(5.2%, 17.9%)	12.0%	(10.6%, 13.5%)
Charlottesville City	51540	16.4%	(6.1%, 37.4%)	16.9%	(15.2%, 18.8%)
Covington City	51580	42.8%	(3.4%, 94.1%)	16.6%	(12.2%, 22.3%)
Fairfax City	51600	13.4%	(5.9%, 27.5%)	13.5%	(11.9%, 15.2%)
Falls Church City	51610	0.0%	(0.0%, 30.8%)	11.0%	(9.6%, 12.7%)
Lynchburg City	51680	17.4%	(9.0%, 31.0%)	17.5%	(16.2%, 19.0%)
Manassas City	51683	15.3%	(5.6%, 35.3%)	12.3%	(10.9%, 14.0%)
Manassas Park City	51685	11.0%	(2.3%, 60.0%)	11.6%	(10.0%, 13.5%)
Salem City	51775	3.8%	(1.7%, 50.9%)	17.3%	(15.8%, 18.8%)

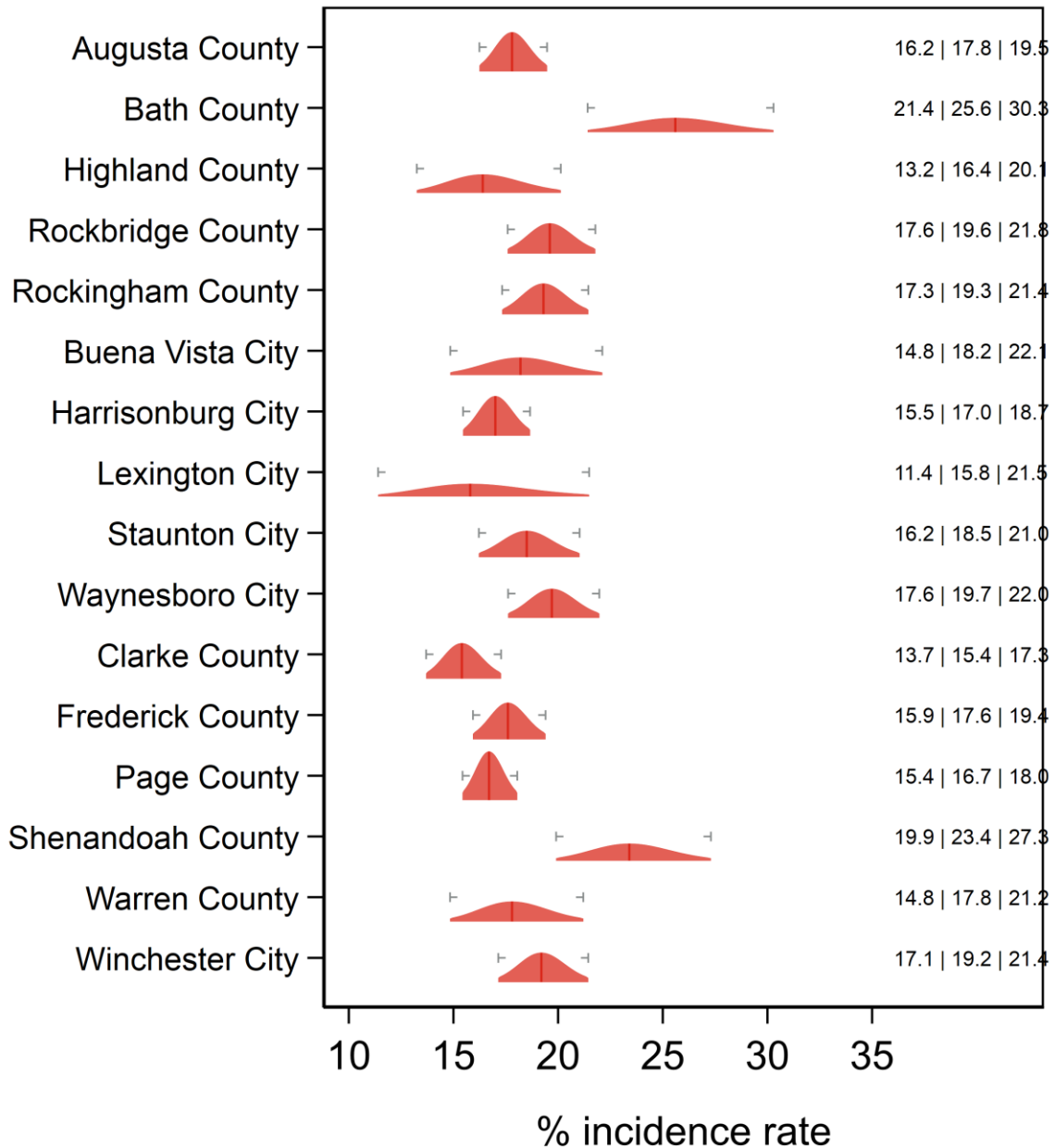
County name	County FIPS	Direct estimate	Direct 95% CI	SAE composite	SAE CI
Bland County	51021	48.9%	(11.0%, 88.1%)	22.0%	(19.2%, 25.0%)
Buchanan County	51027	32.9%	(15.1%, 57.4%)	24.4%	(20.1%, 29.4%)
Carroll County	51035	12.4%	(6.9%, 34.0%)	23.7%	(19.7%, 28.2%)
Dickenson County	51051	43.4%	(21.8%, 67.8%)	28.3%	(22.8%, 34.6%)
Floyd County	51063	13.4%	(4.3%, 34.9%)	21.2%	(19.4%, 23.3%)
Franklin County	51067	12.8%	(7.5%, 24.7%)	19.5%	(17.3%, 21.9%)
Giles County	51071	10.9%	(4.7%, 51.0%)	23.1%	(19.7%, 27.0%)
Grayson County	51077	10.0%	(4.3%, 33.6%)	16.5%	(14.6%, 18.6%)
Henry County	51089	35.7%	(24.2%, 49.2%)	23.5%	(19.5%, 27.9%)
Lee County	51105	21.3%	(7.4%, 47.7%)	25.5%	(21.4%, 30.1%)
Montgomery County	51121	19.4%	(10.8%, 32.4%)	16.5%	(14.9%, 18.3%)
Patrick County	51141	16.7%	(6.3%, 37.6%)	23.5%	(20.0%, 27.3%)
Pittsylvania County	51143	13.5%	(7.2%, 23.8%)	18.1%	(16.4%, 19.9%)
Pulaski County	51155	44.9%	(27.2%, 64.0%)	28.1%	(22.7%, 34.3%)
Russell County	51167	22.3%	(11.3%, 39.3%)	23.4%	(20.1%, 27.1%)
Scott County	51169	23.4%	(12.9%, 38.8%)	22.7%	(19.9%, 25.8%)
Smyth County	51173	25.5%	(12.5%, 44.9%)	20.9%	(18.1%, 24.0%)
Tazewell County	51185	41.9%	(28.6%, 56.4%)	25.3%	(21.5%, 29.4%)
Washington County	51191	20.1%	(11.9%, 31.9%)	19.2%	(17.4%, 21.2%)
Wise County	51195	20.6%	(12.4%, 32.2%)	23.9%	(20.2%, 28.0%)
Wythe County	51197	29.1%	(15.1%, 48.6%)	23.7%	(20.1%, 27.8%)
Bristol City	51520	0.0%	(0.0%, 55.1%)	22.8%	(19.4%, 26.6%)
Danville City	51590	11.9%	(5.6%, 36.4%)	20.2%	(17.3%, 23.5%)
Galax City	51640	0.0%	(-0.0%, 92.2%)	22.5%	(18.8%, 26.5%)
Martinsville City	51690	51.1%	(18.7%, 82.5%)	27.3%	(21.4%, 34.1%)
Norton City	51720	0.0%	(0.0%, 94.0%)	20.0%	(13.5%, 28.8%)
Radford City	51750	15.9%	(5.5%, 38.2%)	25.2%	(17.3%, 35.2%)
Roanoke City	51770	22.6%	(13.6%, 35.2%)	18.6%	(16.4%, 20.9%)

County name	County FIPS	Direct estimate	Direct 95% CI	SAE composite	SAE CI
Amelia County	51007	28.1%	(8.9%, 61.0%)	21.9%	(18.6%, 25.7%)
Brunswick County	51025	7.0%	(3.4%, 31.3%)	21.3%	(18.5%, 24.5%)
Buckingham County	51029	35.6%	(12.8%, 67.4%)	19.4%	(16.9%, 22.1%)
Charles City County	51036	2.1%	(0.4%, 79.1%)	14.2%	(12.2%, 16.4%)
Charlotte County	51037	18.1%	(5.8%, 44.1%)	17.8%	(16.1%, 19.7%)
Chesterfield County	51041	18.8%	(13.0%, 26.3%)	15.4%	(14.4%, 16.4%)
Cumberland County	51049	19.1%	(4.0%, 57.4%)	16.6%	(15.3%, 18.0%)
Dinwiddie County	51053	13.1%	(5.9%, 26.7%)	17.6%	(16.1%, 19.3%)
Goochland County	51075	48.8%	(19.7%, 78.7%)	15.8%	(13.5%, 18.4%)
Greensville County	51081	17.8%	(6.4%, 40.9%)	14.9%	(12.9%, 17.1%)
Halifax County	51083	17.0%	(8.2%, 31.9%)	22.0%	(18.6%, 25.9%)
Hanover County	51085	22.1%	(11.6%, 38.1%)	16.0%	(14.6%, 17.4%)
Henrico County	51087	19.5%	(13.6%, 27.3%)	14.9%	(14.0%, 16.0%)
Lunenburg County	51111	11.8%	(4.2%, 29.1%)	19.6%	(17.5%, 21.9%)
Mecklenburg County	51117	28.8%	(17.3%, 44.0%)	17.8%	(16.2%, 19.5%)
New Kent County	51127	22.9%	(9.2%, 46.4%)	15.3%	(13.5%, 17.3%)
Nottoway County	51135	15.7%	(4.7%, 41.2%)	17.2%	(14.5%, 20.3%)
Powhatan County	51145	12.3%	(3.8%, 33.5%)	17.4%	(14.9%, 20.3%)
Prince Edward County	51147	7.1%	(3.0%, 25.4%)	15.0%	(13.1%, 17.1%)
Prince George County	51149	20.3%	(9.0%, 39.7%)	16.4%	(13.9%, 19.3%)
Surry County	51181	36.2%	(7.0%, 81.0%)	16.3%	(14.0%, 18.9%)
Sussex County	51183	31.9%	(12.5%, 60.7%)	17.5%	(15.3%, 19.9%)
Colonial Heights City	51570	32.8%	(14.3%, 58.9%)	15.1%	(13.3%, 17.1%)
Emporia City	51595	43.8%	(4.5%, 92.7%)	19.5%	(17.1%, 22.1%)
Hopewell City	51670	7.5%	(4.1%, 34.0%)	16.5%	(14.7%, 18.6%)
Petersburg	51730	29.2%	(9.1%, 62.9%)	18.2%	(16.3%, 20.3%)

City					
Richmond City	51760	17.8%	(11.6%, 26.3%)	17.8%	(16.3%, 19.3%)

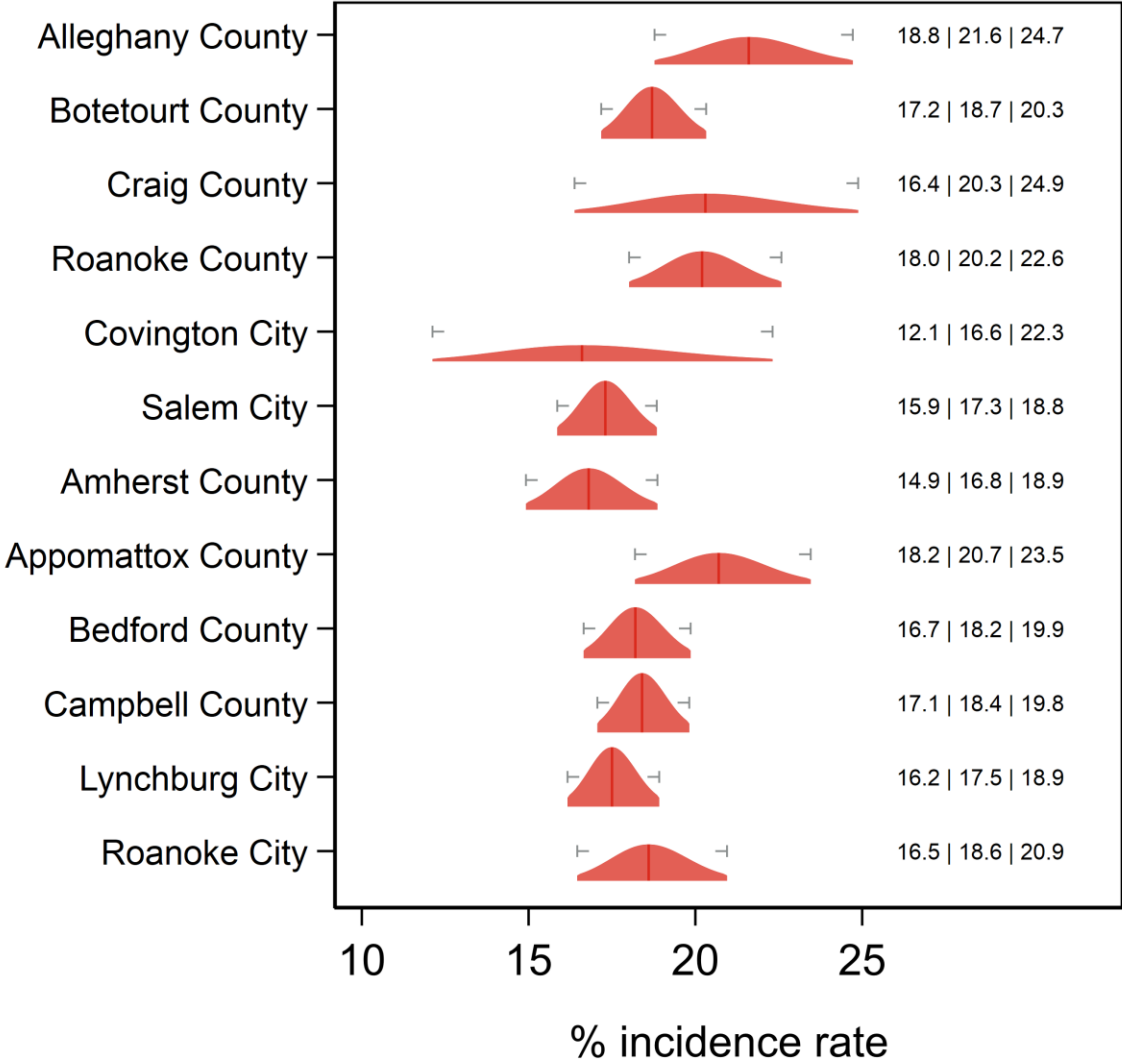
County name	County FIPS	Direct estimate	Direct 95% CI	SAE composite	SAE CI
Accomack County	51001	7.0%	(4.3%, 17.2%)	16.1%	(14.6%, 17.7%)
Essex County	51057	16.4%	(4.3%, 46.2%)	14.2%	(12.4%, 16.3%)
Gloucester County	51073	26.6%	(13.6%, 45.5%)	17.8%	(16.0%, 19.7%)
Isle of Wight County	51093	18.1%	(6.8%, 40.0%)	15.9%	(14.7%, 17.2%)
James City County	51095	12.8%	(7.3%, 21.6%)	15.2%	(13.9%, 16.7%)
King and Queen County	51097	0.0%	(0.0%, 47.4%)	18.7%	(15.5%, 22.5%)
King William County	51101	8.5%	(4.2%, 42.7%)	18.2%	(16.8%, 19.7%)
Lancaster County	51103	23.3%	(8.1%, 51.2%)	14.3%	(12.2%, 16.5%)
Mathews County	51115	18.4%	(7.9%, 37.0%)	17.6%	(14.3%, 21.5%)
Middlesex County	51119	46.3%	(20.8%, 73.9%)	18.2%	(15.6%, 21.2%)
Northampton County	51131	31.2%	(15.1%, 53.6%)	21.1%	(16.3%, 26.8%)
Northumberland County	51133	20.3%	(6.0%, 50.1%)	15.7%	(14.6%, 17.0%)
Richmond County	51159	21.6%	(8.7%, 44.6%)	22.0%	(17.9%, 26.8%)
Southampton County	51175	14.9%	(4.8%, 37.8%)	17.5%	(16.0%, 19.2%)
Westmoreland County	51193	39.0%	(20.5%, 61.4%)	18.6%	(16.3%, 21.2%)
York County	51199	18.1%	(9.7%, 31.2%)	14.4%	(13.1%, 15.8%)
Chesapeake City	51550	15.4%	(10.4%, 22.1%)	15.3%	(14.2%, 16.6%)
Franklin City	51620	5.1%	(1.8%, 46.0%)	17.4%	(14.1%, 21.3%)
Hampton City	51650	13.6%	(8.6%, 20.8%)	14.7%	(13.3%, 16.3%)
Newport News City	51700	24.4%	(16.9%, 33.9%)	16.7%	(15.3%, 18.2%)
Norfolk City	51710	19.1%	(13.4%, 26.4%)	16.1%	(14.9%, 17.4%)
Poquoson City	51735	0.0%	(0.0%, 40.5%)	13.2%	(11.4%, 15.3%)
Portsmouth City	51740	18.9%	(12.5%, 27.5%)	16.2%	(14.7%, 17.7%)
Suffolk City	51800	15.4%	(7.9%, 28.0%)	15.3%	(14.2%, 16.4%)
Virginia Beach City	51810	17.8%	(13.5%, 23.1%)	15.5%	(14.3%, 16.7%)
Williamsburg City	51830	11.5%	(2.2%, 43.3%)	11.8%	(9.9%, 14.0%)

Diagnosed with Depression Central Shenandoah and Lord Fairfax HDs



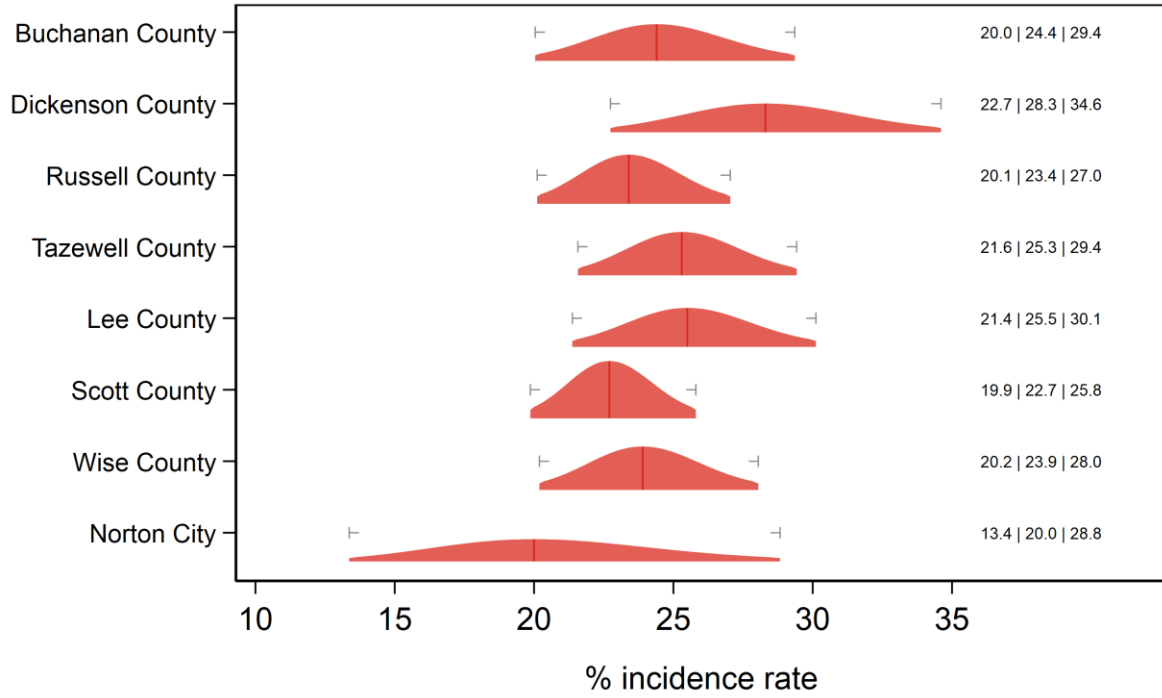
Text at right: 2-sided 95% LCB | Point Estimate | 2-sided 95% UCB
 Gray markers: 95% confidence interval

Diagnosed with Depression Alleghany, Roanoke and Central Virginia HDs



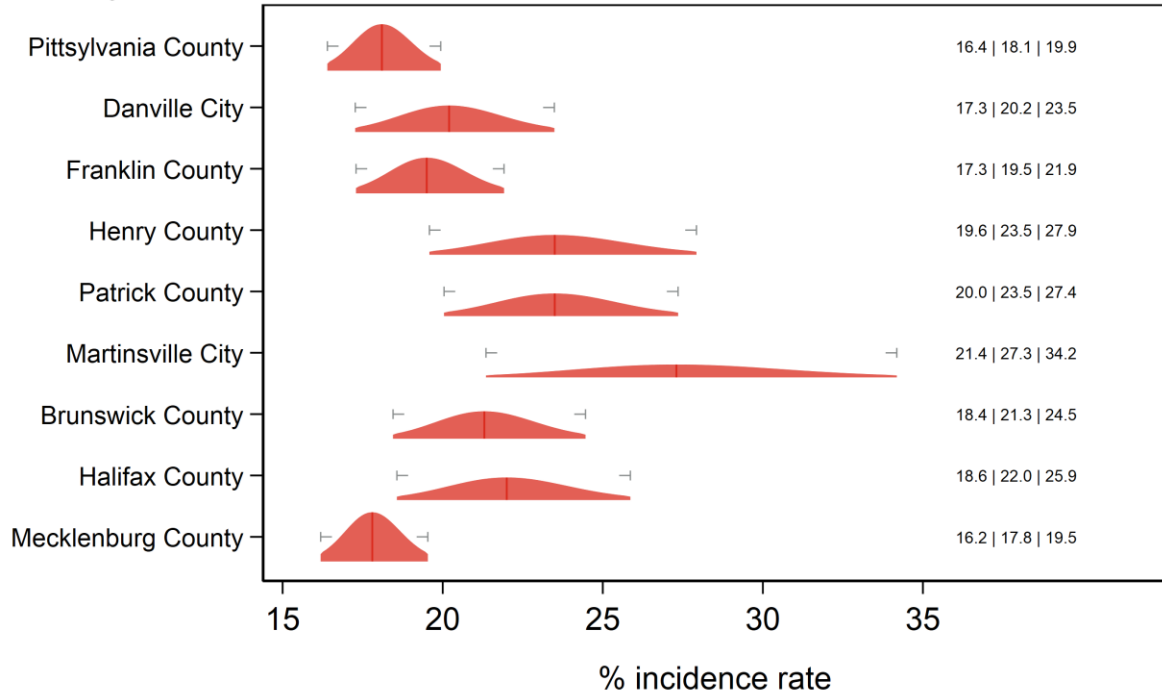
Text at right: 2-sided 95% LCB | Point Estimate | 2-sided 95% UCB
 Gray markers: 95% confidence interval

Diagnosed with Depression Cumberland Plateau and Lenowisco HDs



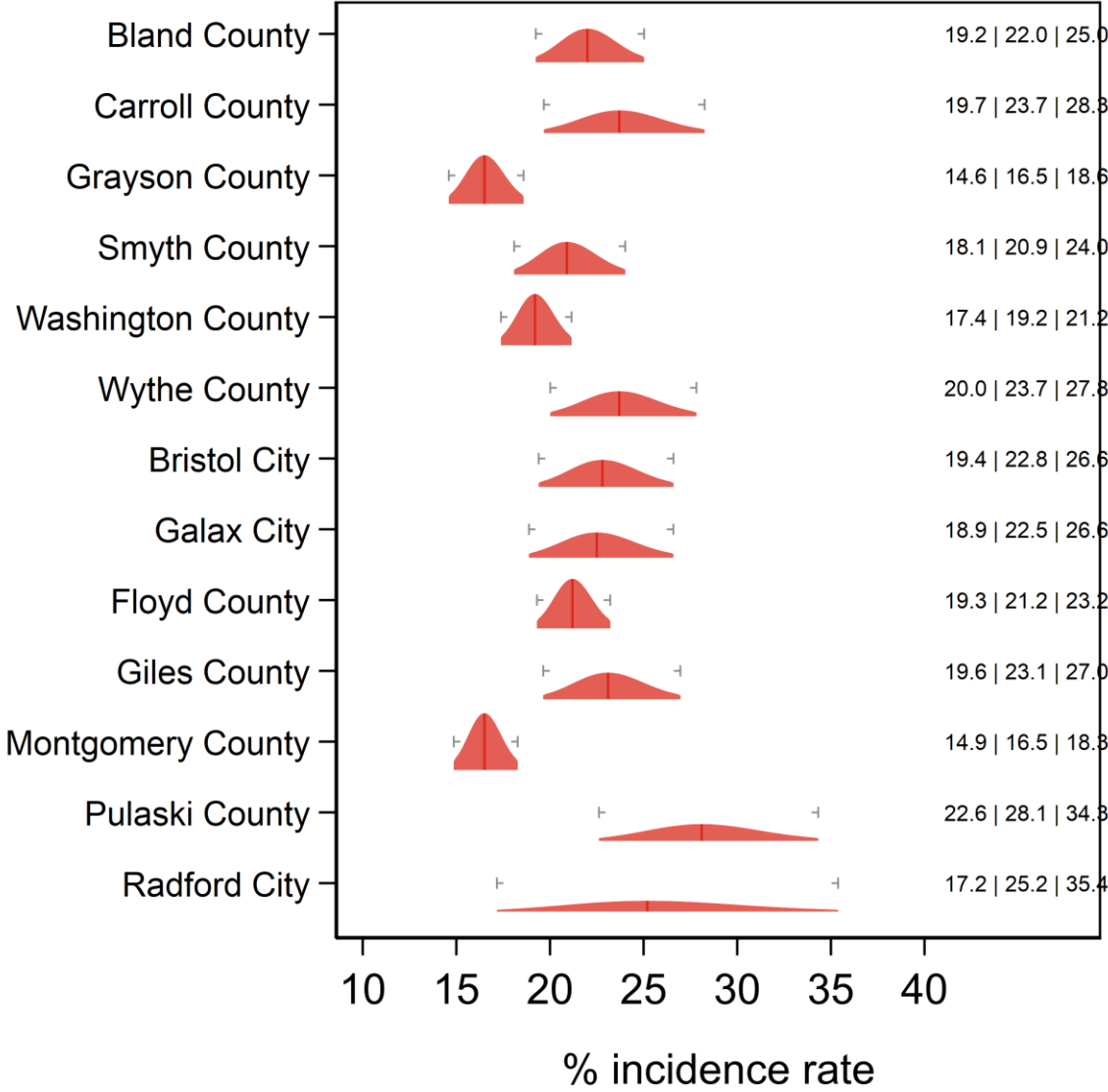
Text at right: 2-sided 95% LCB | Point Estimate | 2-sided 95% UCB
 Gray markers: 95% confidence interval

Diagnosed with Depression Pittsylvania/Danville, Southside and West Piedmont HDs



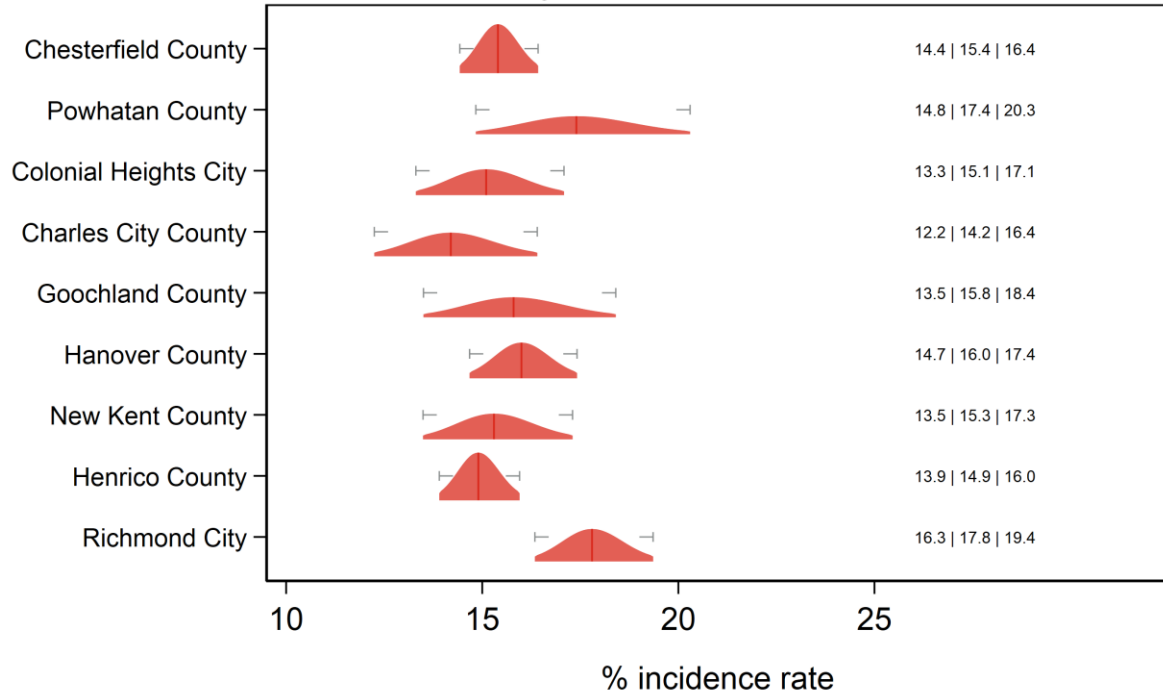
Text at right: 2-sided 95% LCB | Point Estimate | 2-sided 95% UCB
 Gray markers: 95% confidence interval

Diagnosed with Depression New River and Mount Rogers HDs



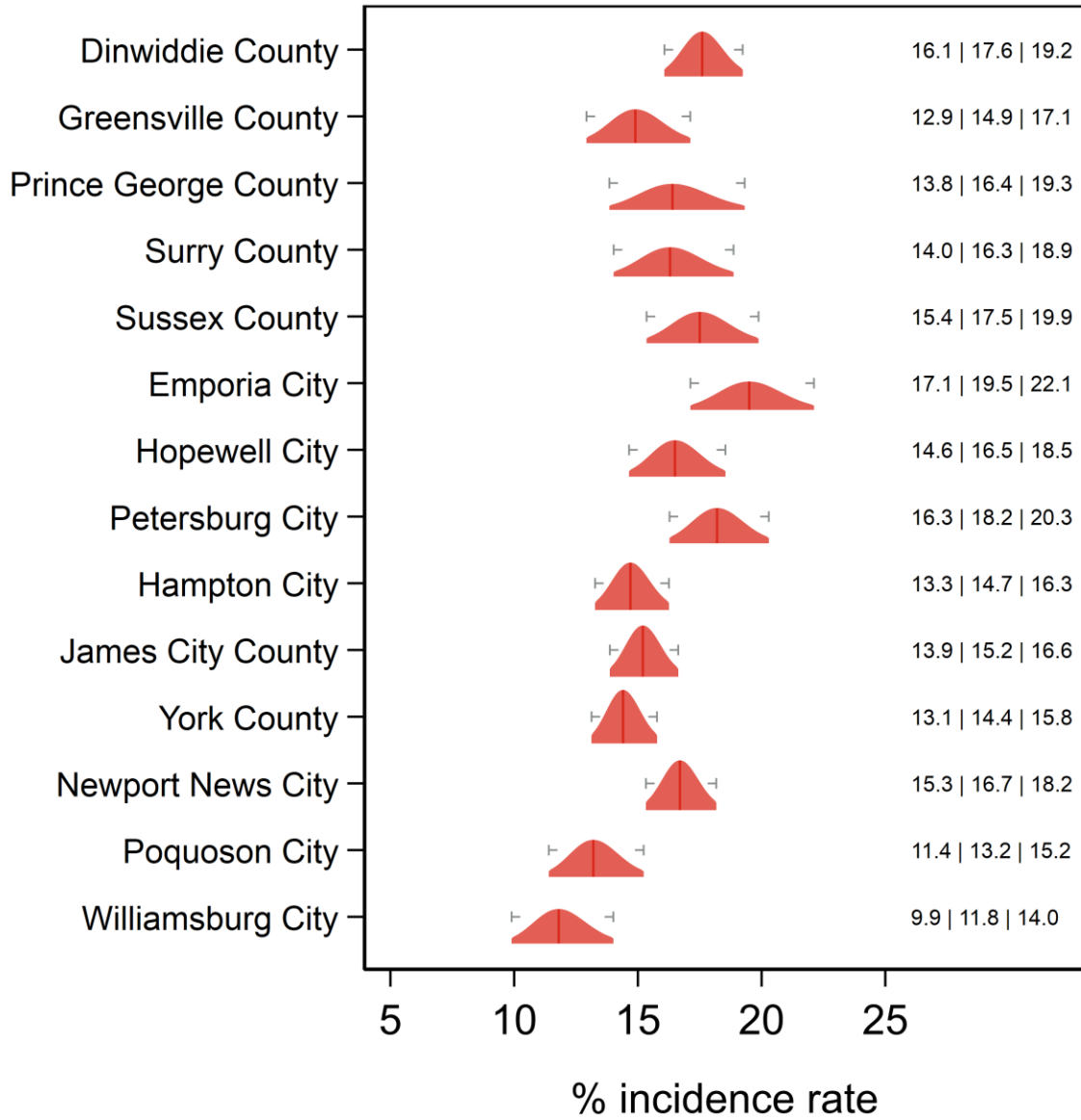
Text at right: 2-sided 95% LCB | Point Estimate | 2-sided 95% UCB
 Gray markers: 95% confidence interval

Diagnosed with Depression Chesterfield, Chickahominy, Henrico and Richmond HDs



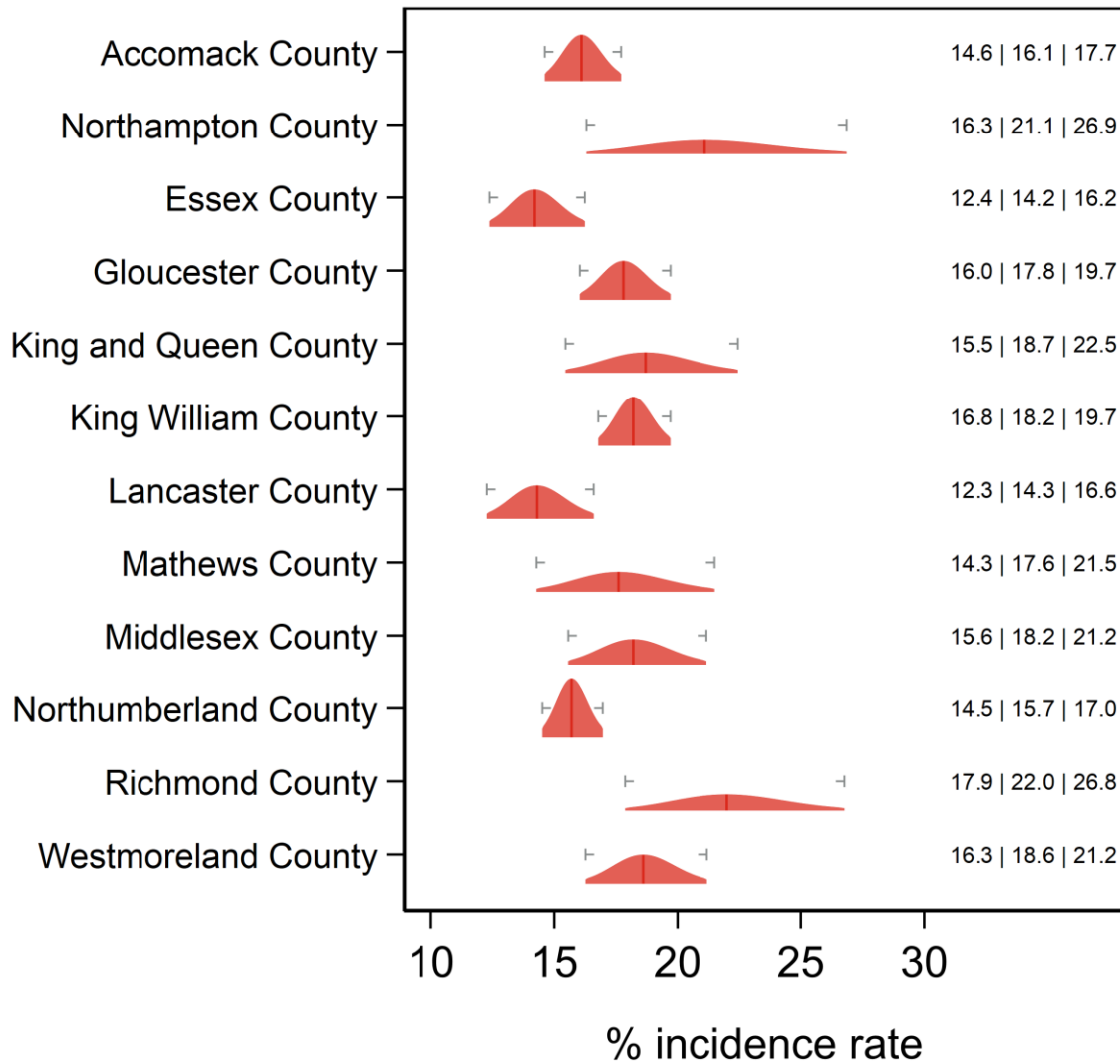
Text at right: 2-sided 95% LCB | Point Estimate | 2-sided 95% UCB
 Gray markers: 95% confidence interval

Diagnosed with Depression Crater, Peninsula and Hampton HDs



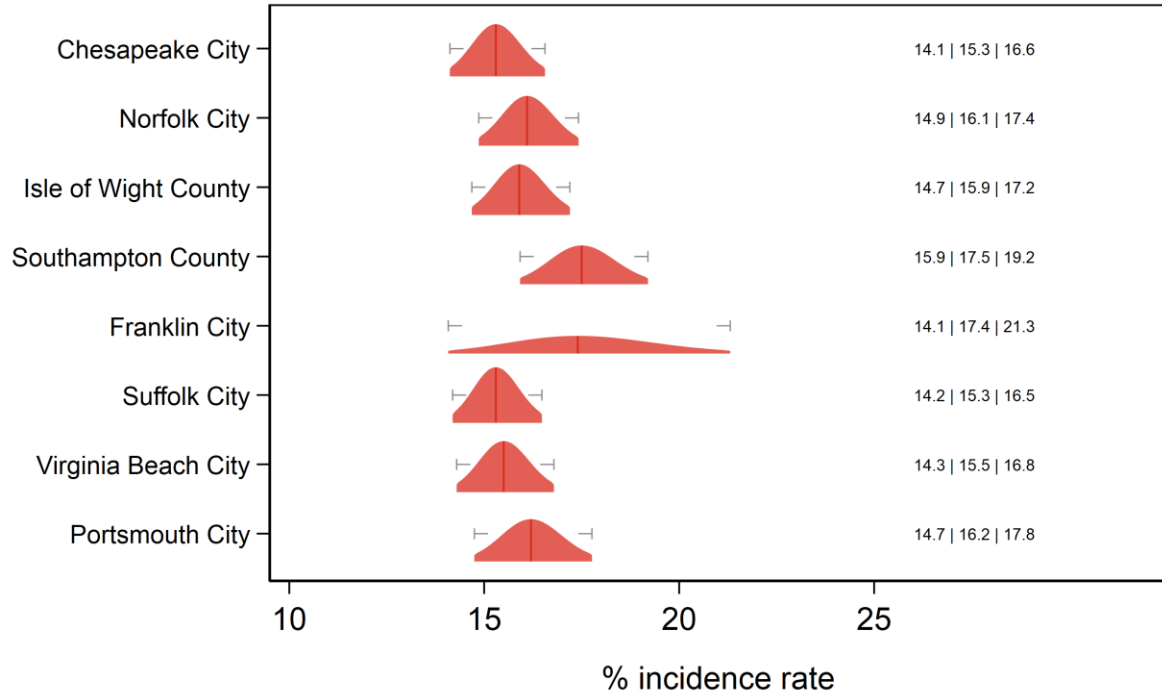
Text at right: 2-sided 95% LCB | Point Estimate | 2-sided 95% UCB
 Gray markers: 95% confidence interval

Diagnosed with Depression Eastern Shore and Three Rivers HDs



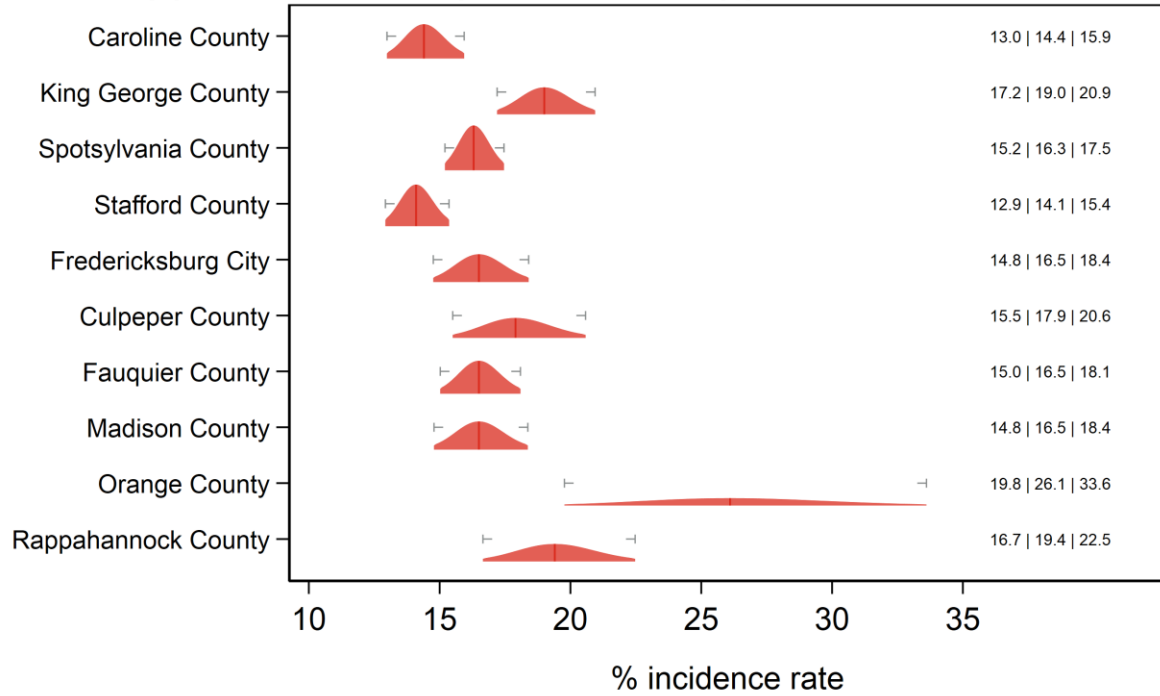
Text at right: 2-sided 95% LCB | Point Estimate | 2-sided 95% UCB
 Gray markers: 95% confidence interval

Diagnosed with Depression Norfolk, Portsmouth, Chesapeake, VA Beach, W. Tidewater HDs



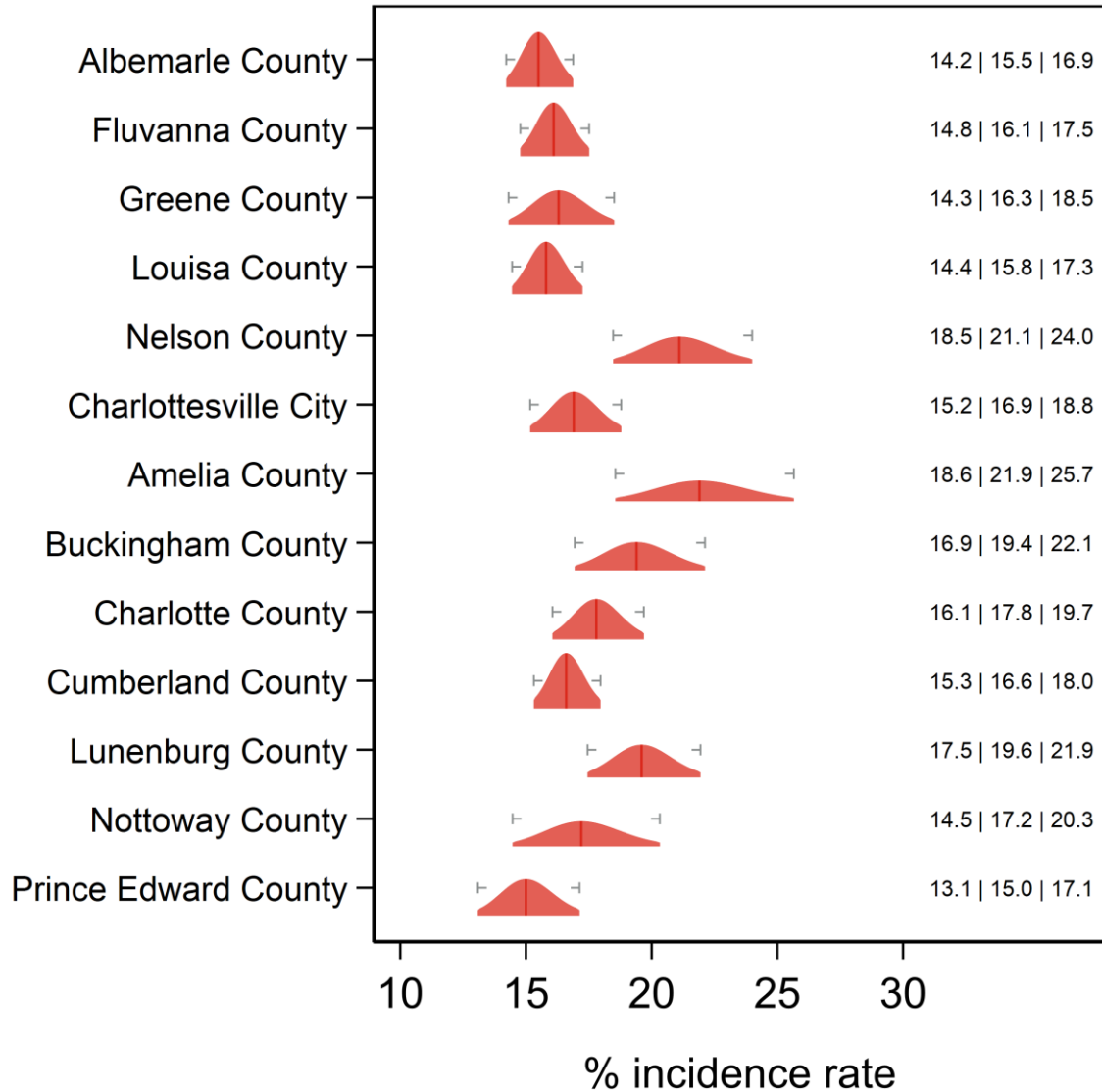
Text at right: 2-sided 95% LCB | Point Estimate | 2-sided 95% UCB
 Gray markers: 95% confidence interval

Diagnosed with Depression Rappahannock/Rapidan and Rappahannock HDs



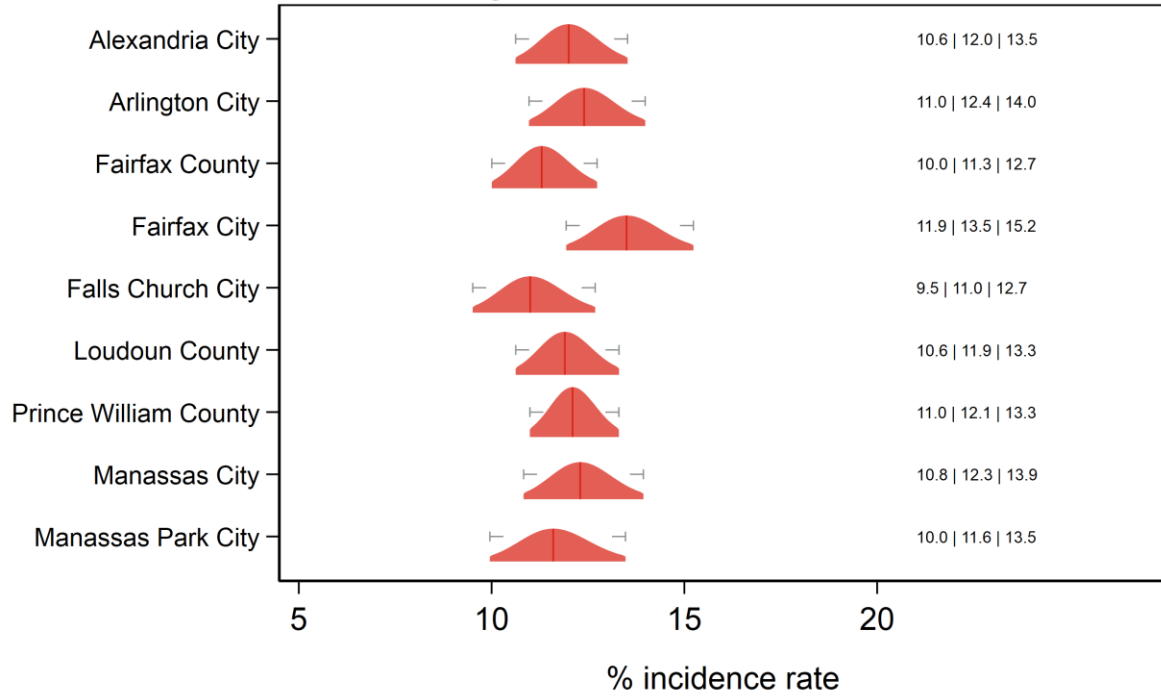
Text at right: 2-sided 95% LCB | Point Estimate | 2-sided 95% UCB
 Gray markers: 95% confidence interval

Diagnosed with Depression Thomas Jefferson and Piedmont HDs



Text at right: 2-sided 95% LCB | Point Estimate | 2-sided 95% UCB
 Gray markers: 95% confidence interval

Diagnosed with Depression Alexandria, Fairfax, Arlington, Loudon, Prince William HDs



Text at right: 2-sided 95% LCB | Point Estimate | 2-sided 95% UCB
Gray markers: 95% confidence interval

Additional diagnostics

Direct estimate is inside the 95% SAE Wilson CI: 24 areas.

Direct estimate is outside the 95% SAE Wilson CI: 109 areas.

SAE estimate is inside the 95% direct Wilson CI: 121 areas.

SAE estimate is outside the 95% direct Wilson CI: 12 areas.

SAE Wilson 95% CI is fully inside the 95% direct Wilson CI: 115 areas.

SAE Wilson 95% CI partially overlaps with the 95% direct Wilson CI: 18 areas.

SAE Wilson 95% CI and the 95% direct Wilson CI do not overlap: 0 areas.

SAE standard error is less than the direct standard error: 125 areas.

SAE standard error is greater than the (nonzero) direct standard error: 0 areas.

Direct standard error is zero: 8 areas.

Proportion of SAE variance due to ACS sampling error: min = 0.70%; med = 7.43%; max = 30.20%.

Proportion of SAE variance due to sampling error in regression coefficient estimates: min = 6.19%; med = 73.33%; max = 97.33%.

Proportion of SAE variance due to model selection: min = 0.28%; med = 15.02%; max = 93.04%.

Proportion of SAE variance due to area random effects: <identically zero>