

Outcome 25: Diagnosed with pre-diabetes or borderline diabetes?

Internal variable name: outc25_prediab_diag

Definition: Have you ever been told by a doctor or other health professional that you have pre-diabetes or borderline diabetes?

Predictive models

	Mixed, demos only	Logit, no area effects	Mixed with area covariates
	b/se	b/se	b/se
Outcome 25: Diagnosed with pre-diabetes or borderline diabetes?			
NH White	0.0000 (.)	0.0000 (.)	0.0000 (.)
NH Black vs. NH White	0.5057*** (0.1086)	0.5057*** (0.1281)	0.5057*** (0.1094)
NH Asian vs. NH White	0.1216 (0.2536)	0.1213 (0.3161)	0.1213 (0.2487)
NH Other vs. NH White	0.1373 (0.2132)	0.1373 (0.2231)	0.1373 (0.2138)
Hispanic vs. NH White	0.3061 (0.2020)	0.3060 (0.2133)	0.3060 (0.1976)
SEX OF RESPONDENT=1	0.0000 (.)	0.0000 (.)	0.0000 (.)
Female	0.0102 (0.1195)	0.0102 (0.0994)	0.0102 (0.1195)
Age 18-34 vs. 65+	-1.7072*** (0.1781)	-1.7072*** (0.2033)	-1.7072*** (0.1788)
Age 35-44 vs. 65+	-0.7036*** (0.1898)	-0.7035*** (0.1668)	-0.7035*** (0.1871)
Age 45-54 vs. 65+	-0.2667 (0.1352)	-0.2667 (0.1391)	-0.2667* (0.1342)
Age 55-64 vs. 65+	0.1318 (0.0956)	0.1318 (0.1169)	0.1318 (0.0955)
65+	0.0000 (.)	0.0000 (.)	0.0000 (.)
_cons	-1.7033*** (0.1019)	-1.7033*** (0.0968)	-1.7033*** (0.1015)
Area effect variance			
var(_cons[FIPS_county])	0.0000 (0.0101)		0.0000 (0.0000)

Number of alternative models used to estimate model error = 2.

Results by health districts

County name	County FIPS	Direct estimate	Direct 95% CI	SAE composite	SAE CI
Augusta County	51015	7.6%	(3.7%, 15.0%)	13.3%	(12.0%, 14.6%)
Bath County	51017	22.8%	(5.1%, 61.8%)	13.3%	(12.1%, 14.6%)
Caroline County	51033	10.7%	(2.4%, 36.7%)	14.1%	(12.9%, 15.5%)
Clarke County	51043	20.0%	(5.9%, 49.7%)	13.5%	(11.8%, 15.6%)
Culpeper County	51047	25.6%	(11.1%, 48.6%)	14.0%	(11.5%, 16.9%)
Fauquier County	51061	25.7%	(14.1%, 42.2%)	14.0%	(11.4%, 17.0%)
Frederick County	51069	13.5%	(6.9%, 24.5%)	13.5%	(12.2%, 15.0%)
Highland County	51091	5.8%	(1.9%, 53.0%)	13.3%	(11.5%, 15.3%)
King George County	51099	10.7%	(2.6%, 34.6%)	14.1%	(10.9%, 18.1%)
Madison County	51113	5.9%	(1.7%, 36.3%)	14.0%	(10.3%, 18.7%)
Orange County	51137	11.9%	(5.7%, 30.1%)	14.0%	(12.7%, 15.4%)
Page County	51139	27.6%	(8.0%, 62.4%)	13.5%	(10.8%, 16.7%)
Rappahannock County	51157	0.0%	(0.0%, 49.8%)	14.0%	(11.6%, 16.8%)
Rockbridge County	51163	15.6%	(5.2%, 38.1%)	13.3%	(12.0%, 14.7%)
Rockingham County	51165	6.2%	(2.5%, 14.3%)	11.8%	(10.6%, 13.2%)
Shenandoah County	51171	19.6%	(9.3%, 36.7%)	13.5%	(11.3%, 16.0%)
Spotsylvania County	51177	15.9%	(9.3%, 25.8%)	14.1%	(12.8%, 15.5%)
Stafford County	51179	10.3%	(5.3%, 19.1%)	13.7%	(12.4%, 15.1%)
Warren County	51187	19.7%	(8.5%, 39.2%)	13.5%	(11.6%, 15.6%)
Buena Vista City	51530	0.0%	(0.0%, 62.9%)	13.3%	(10.6%, 16.6%)
Fredericksburg City	51630	12.1%	(5.0%, 32.2%)	13.7%	(12.3%, 15.2%)
Harrisonburg City	51660	0.0%	(0.0%, 36.1%)	11.8%	(10.6%, 13.2%)
Lexington City	51678	.%	(.%, .%)	13.3%	(9.0%, 19.2%)
Staunton City	51790	20.8%	(4.4%, 59.7%)	13.3%	(11.7%, 15.1%)
Waynesboro	51820	0.0%	(0.0%, 68.9%)	13.3%	(10.4%, 16.9%)

City					
Winchester City	51840	13.2%	(3.9%, 50.2%)	13.5%	(12.2%, 15.0%)

County name	County FIPS	Direct estimate	Direct 95% CI	SAE composite	SAE CI
Albemarle County	51003	7.8%	(5.1%, 16.0%)	13.1%	(11.9%, 14.4%)
Alleghany County	51005	8.3%	(4.3%, 26.4%)	13.7%	(11.6%, 16.2%)
Amherst County	51009	20.1%	(8.6%, 40.1%)	14.1%	(12.8%, 15.4%)
Appomattox County	51011	7.9%	(1.7%, 29.5%)	14.1%	(12.1%, 16.3%)
Arlington City	51013	10.4%	(5.3%, 19.4%)	12.9%	(11.3%, 14.7%)
Bedford County	51019	13.6%	(7.9%, 22.6%)	14.1%	(12.8%, 15.5%)
Botetourt County	51023	14.7%	(5.1%, 35.3%)	13.7%	(12.0%, 15.6%)
Campbell County	51031	15.0%	(7.3%, 28.3%)	12.7%	(11.6%, 13.9%)
Craig County	51045	0.0%	(-0.0%, 59.0%)	13.7%	(10.3%, 18.1%)
Fairfax County	51059	8.8%	(6.5%, 11.9%)	14.0%	(12.1%, 16.2%)
Fluvanna County	51065	15.2%	(3.5%, 47.4%)	14.1%	(12.9%, 15.5%)
Greene County	51079	0.0%	(0.0%, 54.8%)	12.5%	(11.2%, 14.0%)
Loudoun County	51107	10.5%	(6.3%, 17.1%)	13.9%	(12.1%, 15.9%)
Louisa County	51109	10.0%	(2.6%, 31.9%)	14.1%	(12.9%, 15.5%)
Nelson County	51125	10.1%	(3.5%, 53.5%)	14.1%	(11.7%, 17.0%)
Prince William County	51153	15.4%	(10.7%, 21.6%)	14.6%	(12.6%, 16.8%)
Roanoke County	51161	17.2%	(10.4%, 27.0%)	13.8%	(11.9%, 15.8%)
Alexandria City	51510	6.3%	(2.7%, 13.6%)	14.2%	(12.4%, 16.2%)
Charlottesville City	51540	4.1%	(2.3%, 20.7%)	12.5%	(11.3%, 13.9%)
Covington City	51580	0.0%	(0.0%, 99.4%)	13.7%	(11.4%, 16.4%)
Fairfax City	51600	14.1%	(5.7%, 31.0%)	13.5%	(11.7%, 15.5%)
Falls Church City	51610	16.6%	(3.3%, 54.2%)	13.9%	(11.2%, 17.1%)
Lynchburg City	51680	13.3%	(6.7%, 24.9%)	12.7%	(11.5%, 13.9%)
Manassas City	51683	11.9%	(3.0%, 36.9%)	14.0%	(11.9%, 16.6%)
Manassas Park City	51685	13.6%	(2.3%, 69.8%)	14.0%	(11.9%, 16.4%)
Salem City	51775	7.0%	(1.1%, 33.7%)	14.1%	(12.7%, 15.6%)

County name	County FIPS	Direct estimate	Direct 95% CI	SAE composite	SAE CI
Bland County	51021	5.1%	(1.1%, 74.0%)	13.5%	(11.2%, 16.2%)
Buchanan County	51027	4.9%	(2.0%, 25.8%)	13.3%	(10.8%, 16.4%)
Carroll County	51035	11.5%	(5.6%, 35.0%)	13.5%	(12.0%, 15.1%)
Dickenson County	51051	5.2%	(1.4%, 31.3%)	13.3%	(10.9%, 16.2%)
Floyd County	51063	24.0%	(8.3%, 52.4%)	11.4%	(9.2%, 14.1%)
Franklin County	51067	2.1%	(0.4%, 11.2%)	13.7%	(11.9%, 15.8%)
Giles County	51071	9.1%	(2.9%, 60.4%)	11.4%	(10.1%, 12.9%)
Grayson County	51077	0.0%	(0.0%, 27.7%)	13.5%	(10.8%, 16.8%)
Henry County	51089	16.1%	(5.8%, 37.4%)	15.2%	(13.9%, 16.5%)
Lee County	51105	20.4%	(7.0%, 46.6%)	13.3%	(11.2%, 15.8%)
Montgomery County	51121	9.1%	(4.1%, 19.0%)	11.4%	(9.9%, 13.1%)
Patrick County	51141	11.8%	(3.1%, 36.3%)	15.2%	(13.9%, 16.6%)
Pittsylvania County	51143	15.7%	(9.0%, 25.9%)	15.2%	(13.9%, 16.5%)
Pulaski County	51155	14.4%	(5.0%, 35.1%)	11.4%	(9.6%, 13.6%)
Russell County	51167	2.2%	(1.1%, 25.0%)	13.3%	(11.4%, 15.5%)
Scott County	51169	12.6%	(5.9%, 24.9%)	13.3%	(12.0%, 14.8%)
Smyth County	51173	12.6%	(4.3%, 31.6%)	13.5%	(12.1%, 15.1%)
Tazewell County	51185	9.4%	(3.6%, 22.6%)	13.3%	(12.1%, 14.7%)
Washington County	51191	10.5%	(4.6%, 22.1%)	13.5%	(12.2%, 14.9%)
Wise County	51195	17.0%	(8.6%, 30.9%)	13.3%	(10.8%, 16.3%)
Wythe County	51197	13.9%	(7.3%, 31.6%)	13.5%	(12.1%, 15.0%)
Bristol City	51520	6.7%	(1.6%, 68.8%)	13.5%	(12.3%, 14.8%)
Danville City	51590	11.6%	(5.3%, 40.3%)	15.2%	(13.8%, 16.6%)
Galax City	51640	0.0%	(-0.0%, 92.2%)	13.5%	(11.4%, 16.0%)
Martinsville City	51690	0.0%	(-0.0%, 53.9%)	15.2%	(13.2%, 17.4%)
Norton City	51720	85.5%	(2.1%, 99.7%)	13.3%	(7.1%, 23.5%)
Radford City	51750	17.7%	(6.7%, 39.2%)	11.4%	(10.1%, 13.0%)
Roanoke City	51770	9.5%	(4.3%, 19.9%)	14.1%	(12.7%, 15.6%)

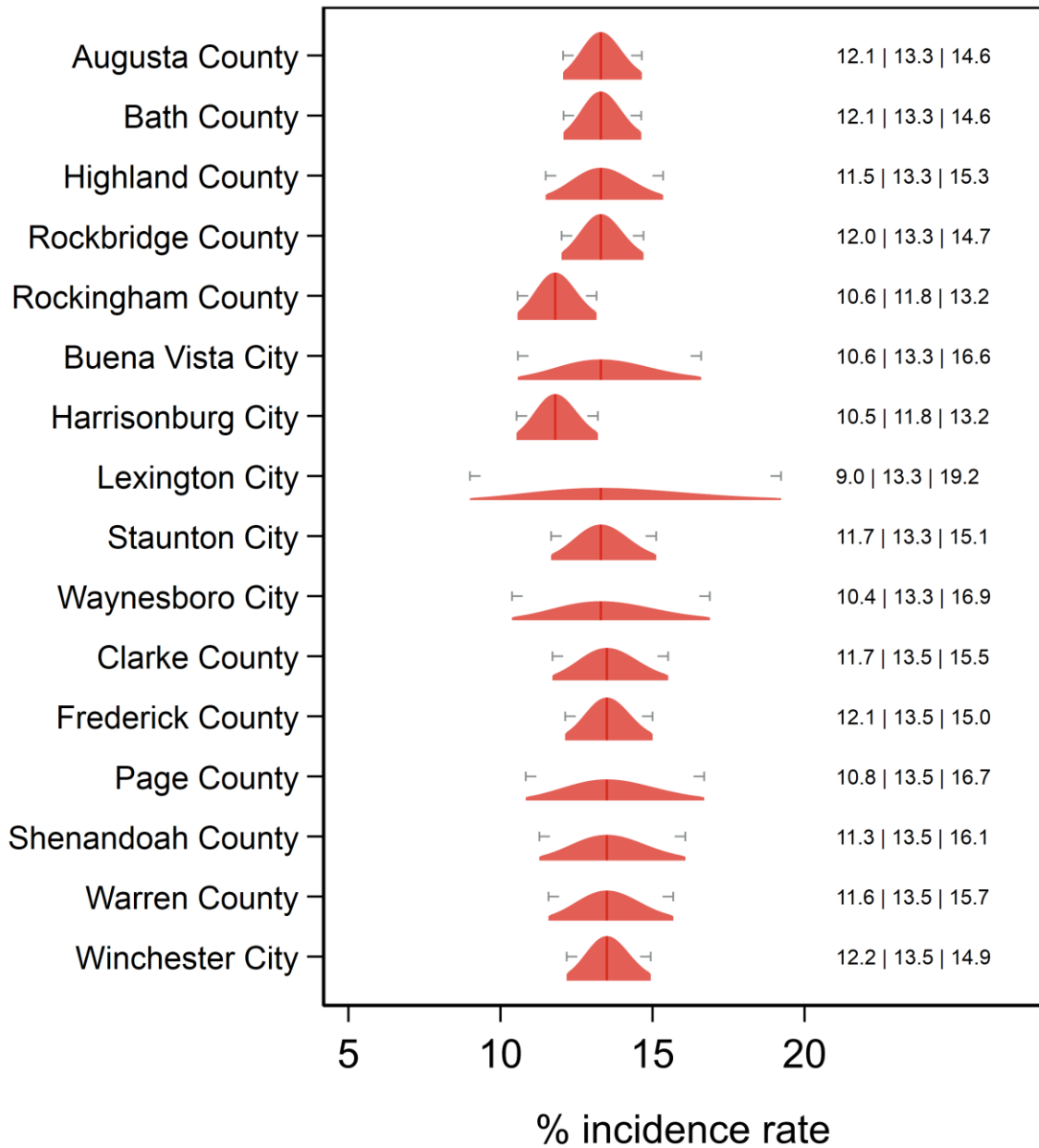
County name	County FIPS	Direct estimate	Direct 95% CI	SAE composite	SAE CI
Amelia County	51007	7.8%	(3.7%, 39.2%)	15.1%	(13.7%, 16.7%)
Brunswick County	51025	5.6%	(0.9%, 29.0%)	15.1%	(13.7%, 16.7%)
Buckingham County	51029	10.1%	(2.8%, 30.5%)	15.1%	(13.2%, 17.3%)
Charles City County	51036	0.0%	(0.0%, 87.1%)	14.1%	(12.8%, 15.4%)
Charlotte County	51037	9.3%	(4.5%, 37.0%)	15.1%	(13.7%, 16.7%)
Chesterfield County	51041	15.3%	(9.9%, 22.8%)	14.4%	(12.8%, 16.2%)
Cumberland County	51049	11.6%	(3.8%, 45.4%)	15.1%	(13.1%, 17.4%)
Dinwiddie County	51053	10.5%	(4.3%, 23.4%)	15.6%	(13.7%, 17.8%)
Goochland County	51075	3.9%	(1.9%, 42.2%)	14.1%	(12.9%, 15.3%)
Greensville County	51081	18.8%	(4.2%, 54.8%)	15.6%	(12.7%, 19.2%)
Halifax County	51083	10.4%	(3.5%, 26.9%)	15.1%	(13.5%, 16.9%)
Hanover County	51085	17.6%	(8.1%, 34.1%)	14.1%	(11.4%, 17.2%)
Henrico County	51087	14.6%	(8.9%, 23.0%)	14.8%	(13.3%, 16.5%)
Lunenburg County	51111	20.8%	(6.2%, 51.1%)	15.1%	(13.7%, 16.7%)
Mecklenburg County	51117	7.9%	(2.8%, 20.4%)	15.1%	(13.7%, 16.7%)
New Kent County	51127	8.3%	(1.3%, 38.3%)	14.1%	(12.7%, 15.6%)
Nottoway County	51135	0.9%	(0.6%, 25.3%)	15.1%	(13.2%, 17.3%)
Powhatan County	51145	5.3%	(1.0%, 23.3%)	14.1%	(11.5%, 17.2%)
Prince Edward County	51147	14.7%	(4.3%, 40.0%)	15.1%	(13.6%, 16.8%)
Prince George County	51149	10.3%	(5.4%, 29.3%)	15.6%	(13.5%, 18.1%)
Surry County	51181	3.5%	(1.3%, 53.8%)	15.6%	(14.0%, 17.5%)
Sussex County	51183	16.5%	(4.2%, 47.1%)	15.6%	(13.9%, 17.5%)
Colonial Heights City	51570	12.9%	(3.3%, 39.2%)	15.6%	(13.9%, 17.5%)
Emporia City	51595	0.0%	(0.0%, 91.6%)	15.6%	(14.1%, 17.3%)
Hopewell City	51670	25.0%	(9.7%, 50.9%)	15.6%	(12.8%, 19.0%)
Petersburg	51730	12.3%	(5.1%, 26.7%)	15.6%	(13.6%, 17.9%)

City					
Richmond City	51760	11.9%	(6.9%, 19.7%)	14.5%	(12.9%, 16.2%)

County name	County FIPS	Direct estimate	Direct 95% CI	SAE composite	SAE CI
Accomack County	51001	9.0%	(3.9%, 19.6%)	15.2%	(12.9%, 17.7%)
Essex County	51057	12.2%	(5.2%, 42.0%)	15.2%	(13.0%, 17.6%)
Gloucester County	51073	11.0%	(5.5%, 20.9%)	15.2%	(13.7%, 16.8%)
Isle of Wight County	51093	13.7%	(4.7%, 33.7%)	15.4%	(13.6%, 17.4%)
James City County	51095	7.3%	(3.8%, 17.4%)	13.7%	(11.9%, 15.7%)
King and Queen County	51097	31.1%	(7.1%, 72.7%)	15.2%	(12.6%, 18.1%)
King William County	51101	28.5%	(5.9%, 71.8%)	14.1%	(10.6%, 18.4%)
Lancaster County	51103	6.6%	(1.7%, 22.5%)	15.2%	(13.1%, 17.5%)
Mathews County	51115	0.0%	(0.0%, 19.9%)	15.2%	(11.9%, 19.2%)
Middlesex County	51119	10.4%	(4.3%, 39.7%)	15.2%	(13.8%, 16.7%)
Northampton County	51131	6.0%	(2.7%, 32.8%)	15.2%	(13.4%, 17.1%)
Northumberland County	51133	6.3%	(3.0%, 32.4%)	15.2%	(12.3%, 18.6%)
Richmond County	51159	8.4%	(3.0%, 21.3%)	15.2%	(13.6%, 16.8%)
Southampton County	51175	17.6%	(4.4%, 49.5%)	15.4%	(12.3%, 19.2%)
Westmoreland County	51193	0.0%	(0.0%, 19.2%)	15.2%	(13.4%, 17.1%)
York County	51199	3.5%	(0.8%, 14.8%)	13.7%	(11.9%, 15.6%)
Chesapeake City	51550	8.9%	(5.5%, 14.0%)	14.6%	(13.2%, 16.1%)
Franklin City	51620	36.2%	(9.4%, 75.6%)	15.4%	(9.2%, 24.7%)
Hampton City	51650	11.0%	(6.5%, 18.1%)	15.3%	(13.7%, 16.9%)
Newport News City	51700	9.2%	(5.0%, 16.6%)	14.4%	(13.1%, 16.0%)
Norfolk City	51710	10.4%	(6.8%, 15.5%)	13.5%	(12.0%, 15.2%)
Poquoson City	51735	7.2%	(2.1%, 50.2%)	13.7%	(11.3%, 16.4%)
Portsmouth City	51740	13.8%	(8.2%, 22.3%)	15.2%	(13.7%, 16.9%)
Suffolk City	51800	8.7%	(3.8%, 18.7%)	15.4%	(13.7%, 17.3%)
Virginia Beach City	51810	10.8%	(7.3%, 15.6%)	13.7%	(12.4%, 15.1%)
Williamsburg City	51830	11.1%	(1.6%, 49.6%)	13.7%	(12.2%, 15.2%)

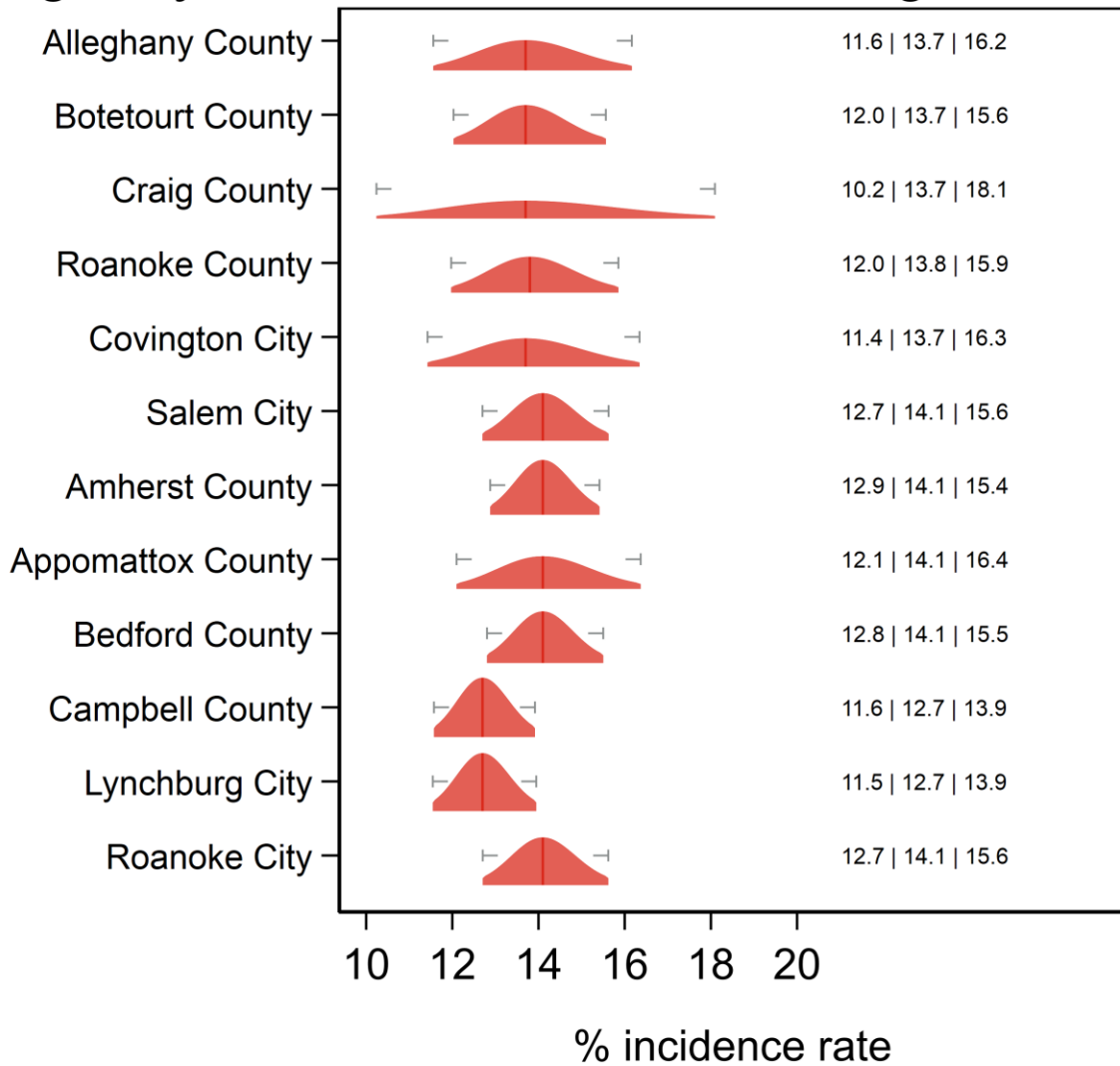
Graphical representation

Ignosed with pre-diabetes or borderline diabetes Central Shenandoah and Lord Fairfax HDs



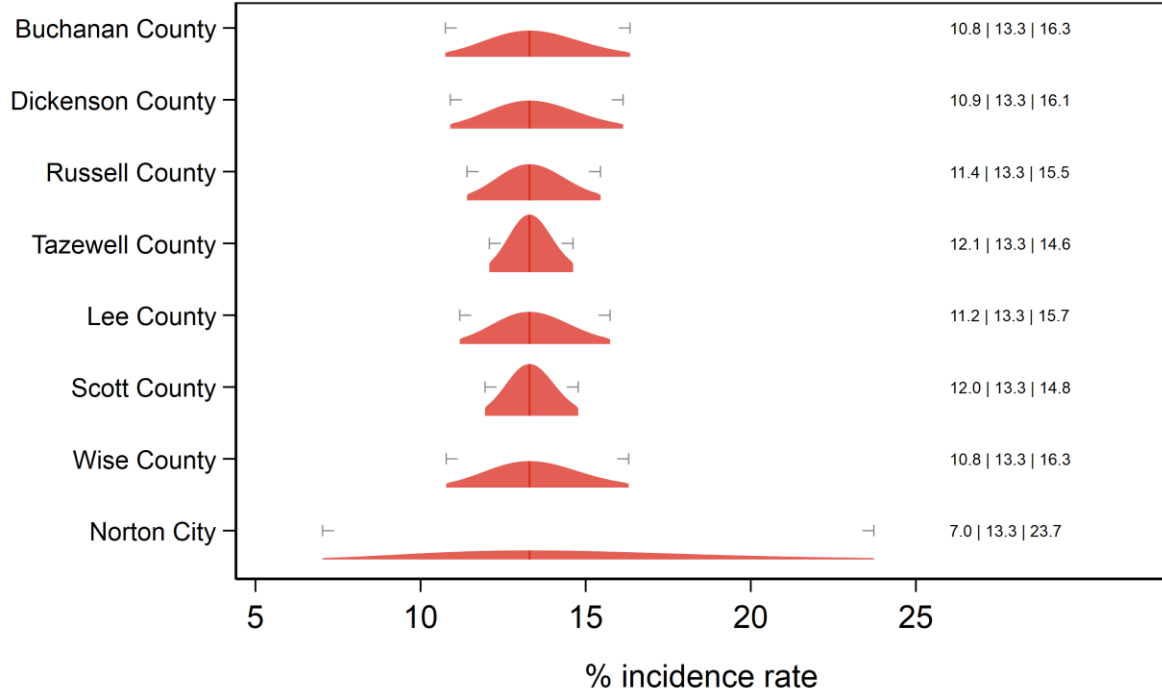
Text at right: 2-sided 95% LCB | Point Estimate | 2-sided 95% UCB
Gray markers: 95% confidence interval

Ignored with pre-diabetes or borderline diabetes Alleghany, Roanoke and Central Virginia HDs



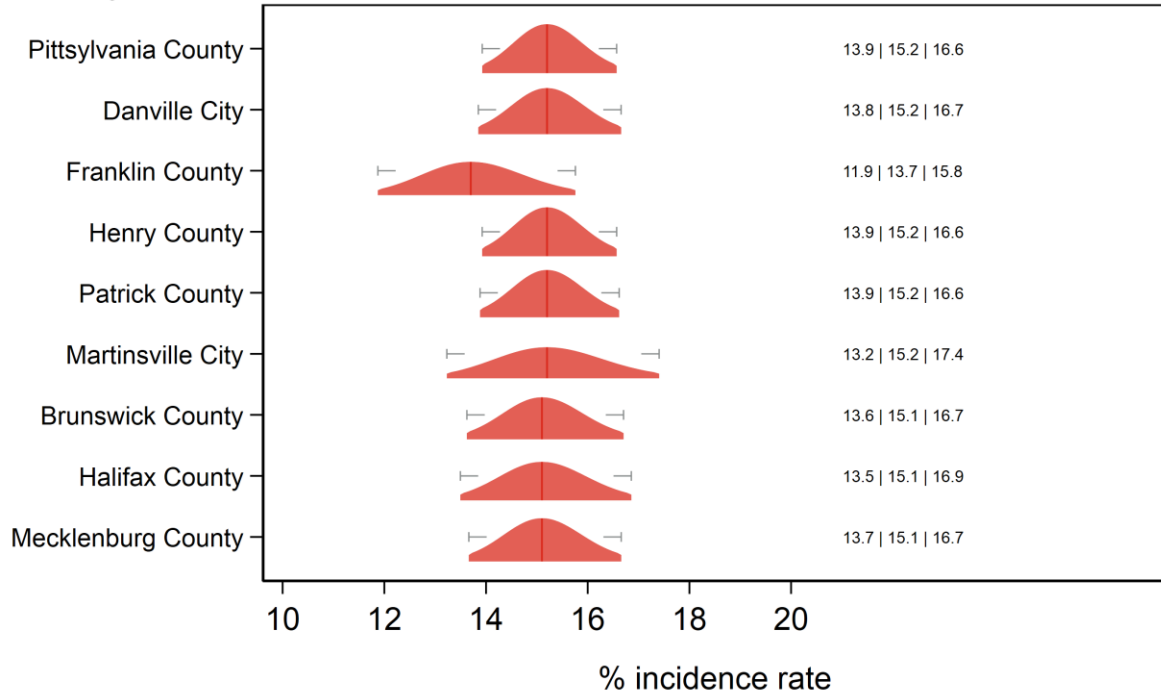
Text at right: 2-sided 95% LCB | Point Estimate | 2-sided 95% UCB
 Gray markers: 95% confidence interval

Diagnosed with pre-diabetes or borderline diabetes? Cumberland Plateau and Lenowisco HDs



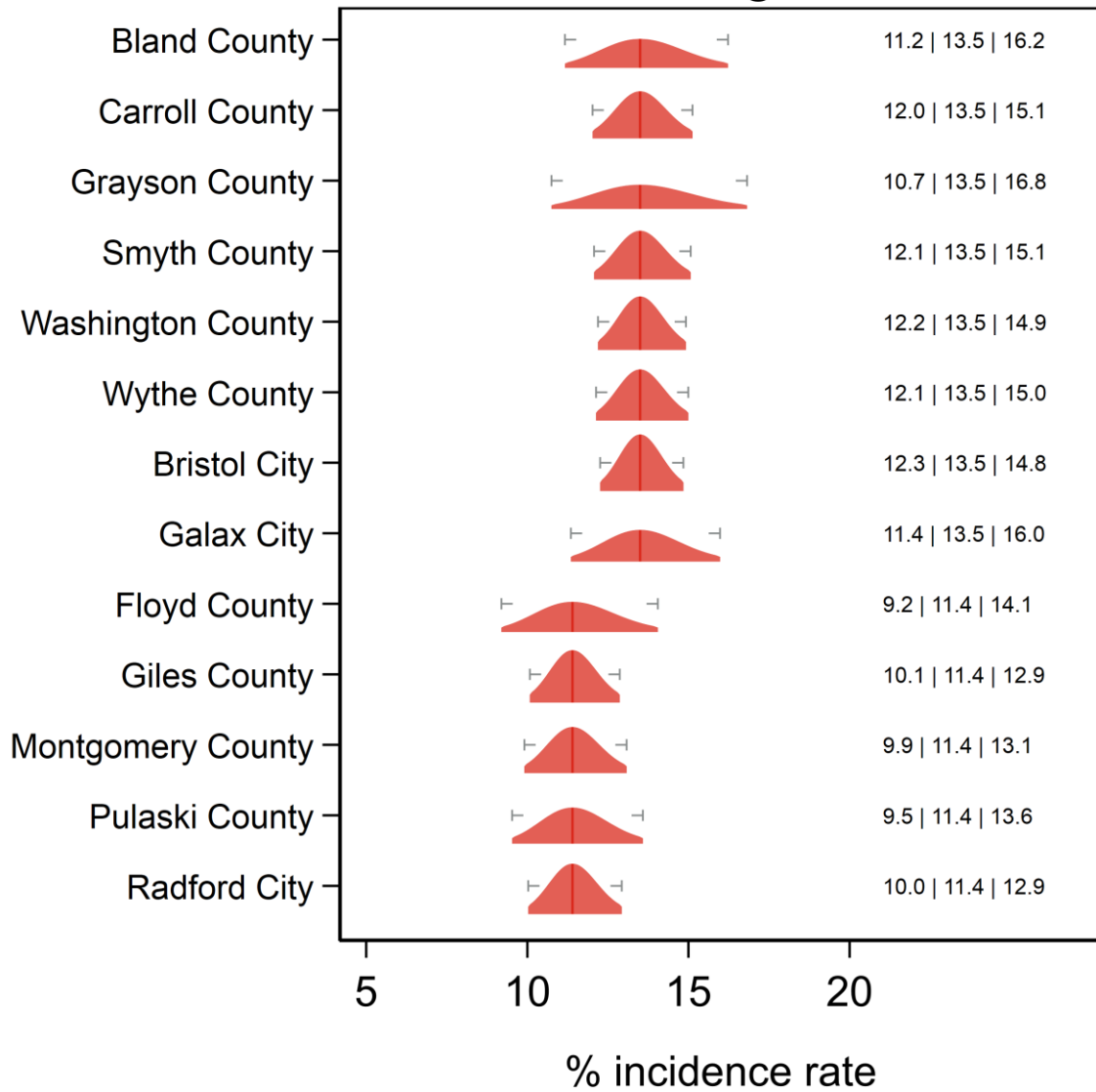
Text at right: 2-sided 95% LCB | Point Estimate | 2-sided 95% UCB
Gray markers: 95% confidence interval

Diagnosed with pre-diabetes or borderline diabetes? Pittsylvania/Danville, Southside and West Piedmont HDs



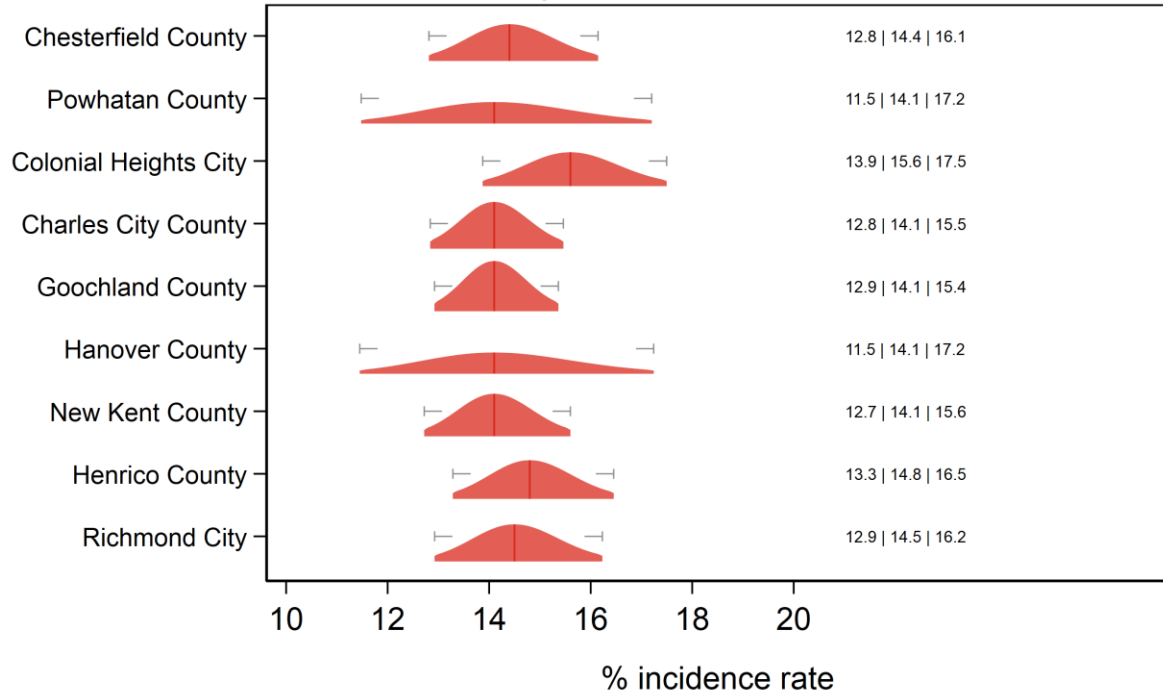
Text at right: 2-sided 95% LCB | Point Estimate | 2-sided 95% UCB
 Gray markers: 95% confidence interval

Ignosed with pre-diabetes or borderline diabetes New River and Mount Rogers HDs



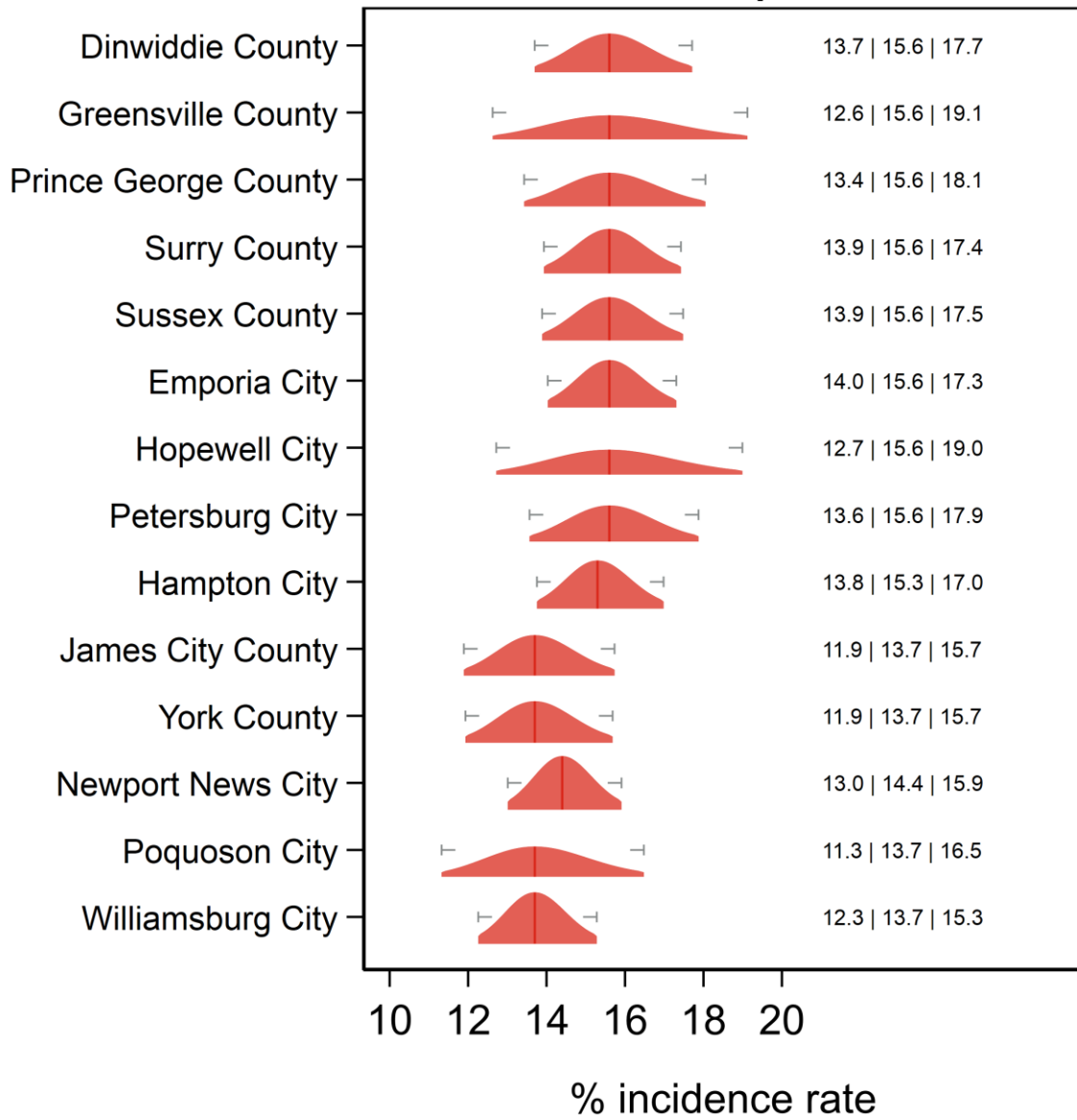
Text at right: 2-sided 95% LCB | Point Estimate | 2-sided 95% UCB
 Gray markers: 95% confidence interval

Diagnosed with pre-diabetes or borderline diabetes? Chesterfield, Chickahominy, Henrico and Richmond HDs



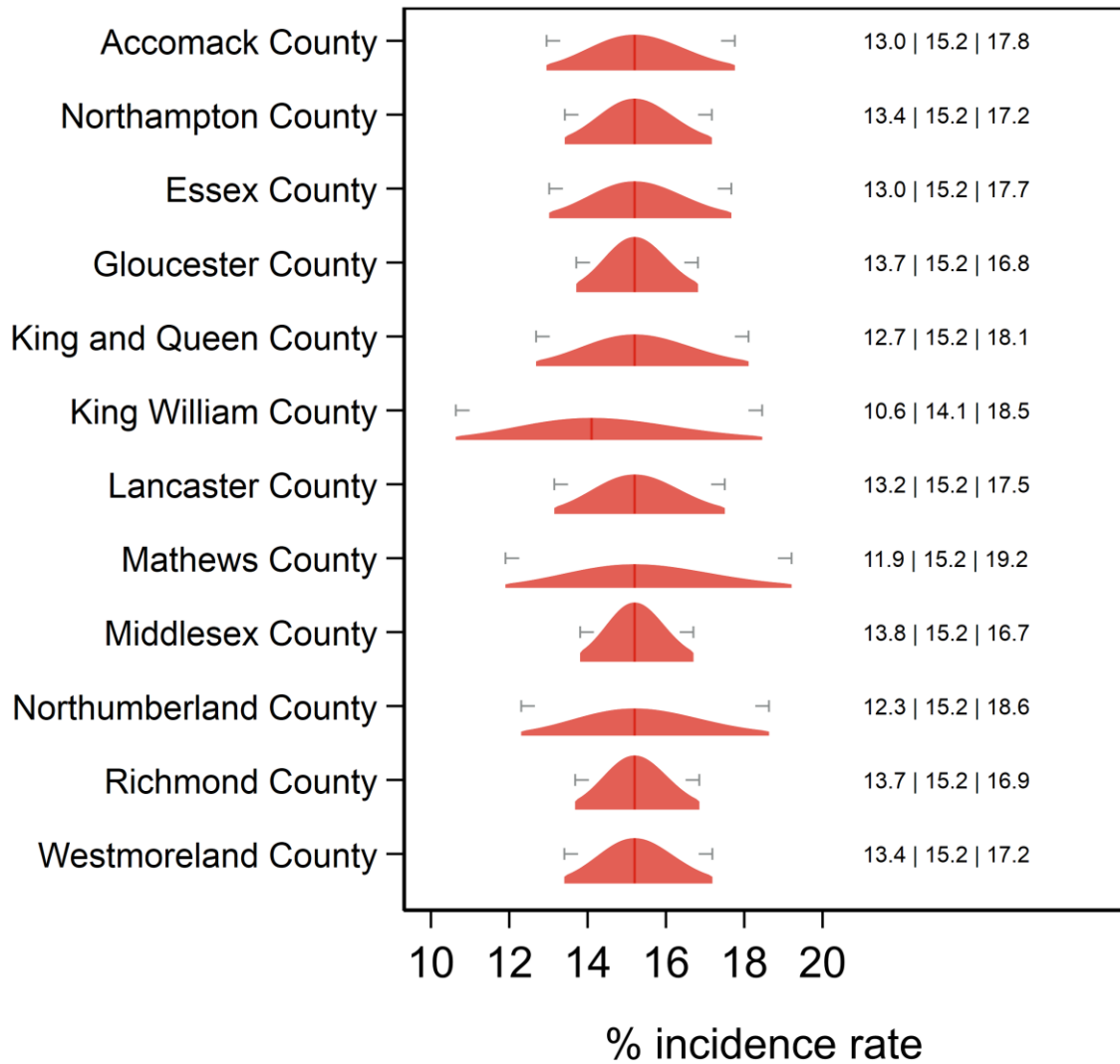
Text at right: 2-sided 95% LCB | Point Estimate | 2-sided 95% UCB
 Gray markers: 95% confidence interval

Ignored with pre-diabetes or borderline diabetes Crater, Peninsula and Hampton HDs



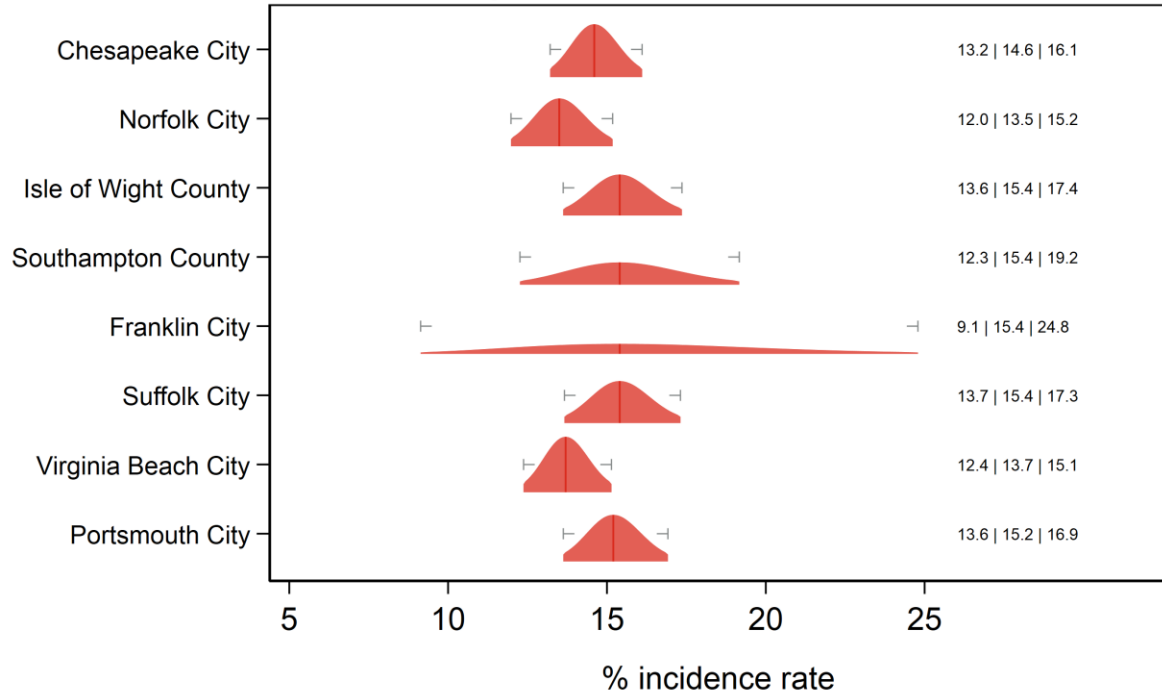
Text at right: 2-sided 95% LCB | Point Estimate | 2-sided 95% UCB
 Gray markers: 95% confidence interval

Ignored with pre-diabetes or borderline diabetes Eastern Shore and Three Rivers HDs



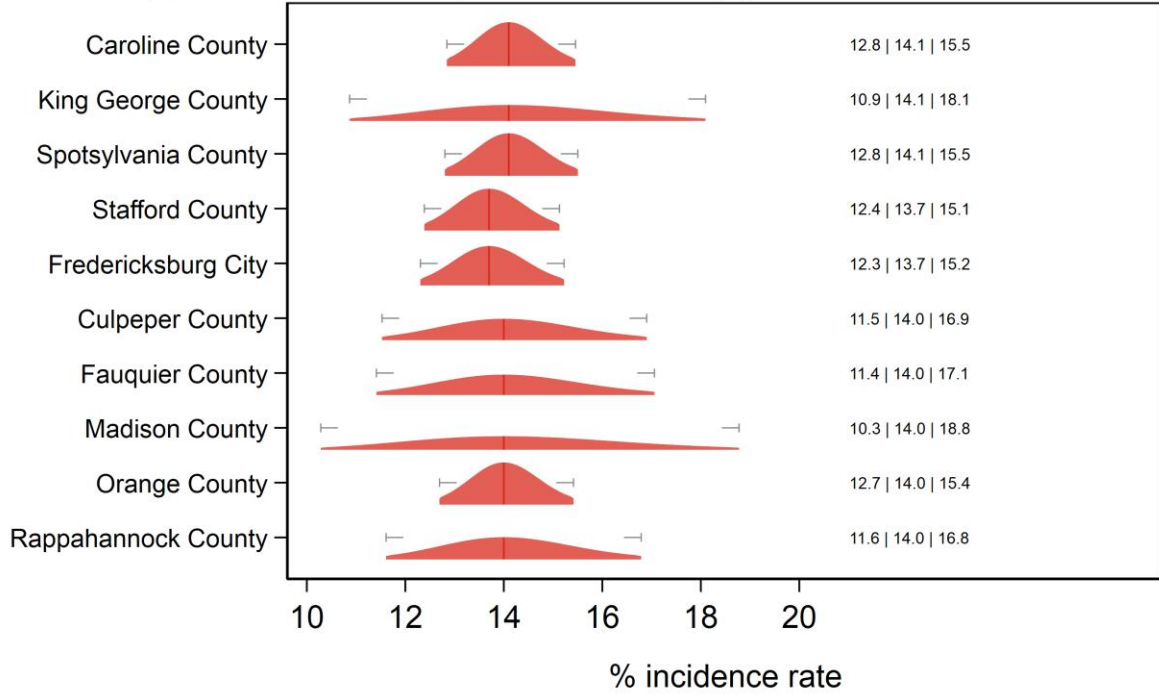
Text at right: 2-sided 95% LCB | Point Estimate | 2-sided 95% UCB
 Gray markers: 95% confidence interval

Diagnosed with pre-diabetes or borderline diabetes? Norfolk, Portsmouth, Chesapeake, VA Beach, W. Tidewater HDs



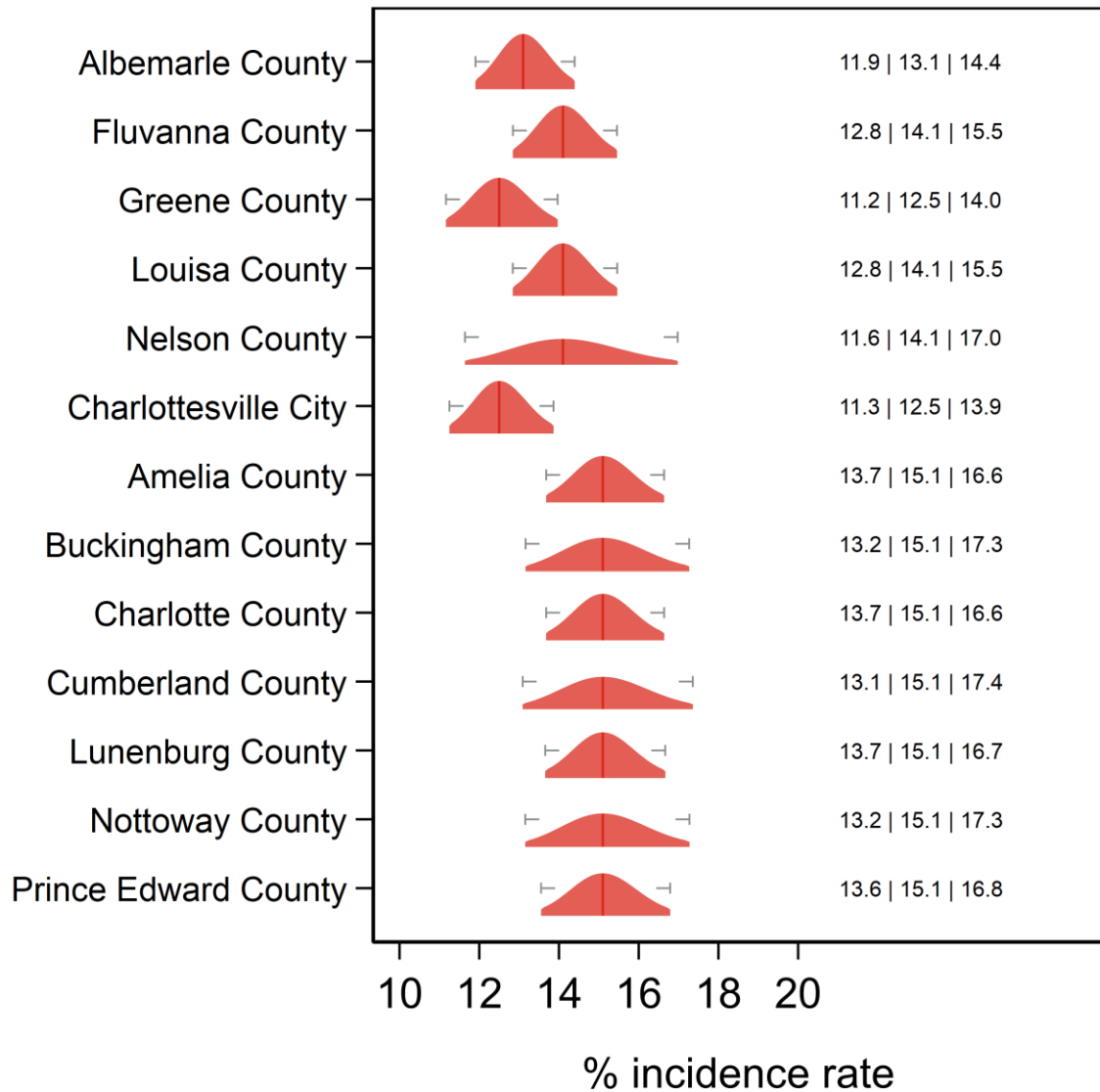
Text at right: 2-sided 95% LCB | Point Estimate | 2-sided 95% UCB
 Gray markers: 95% confidence interval

Diagnosed with pre-diabetes or borderline diabetes? Rappahannock/Rapidan and Rappahannock HDs



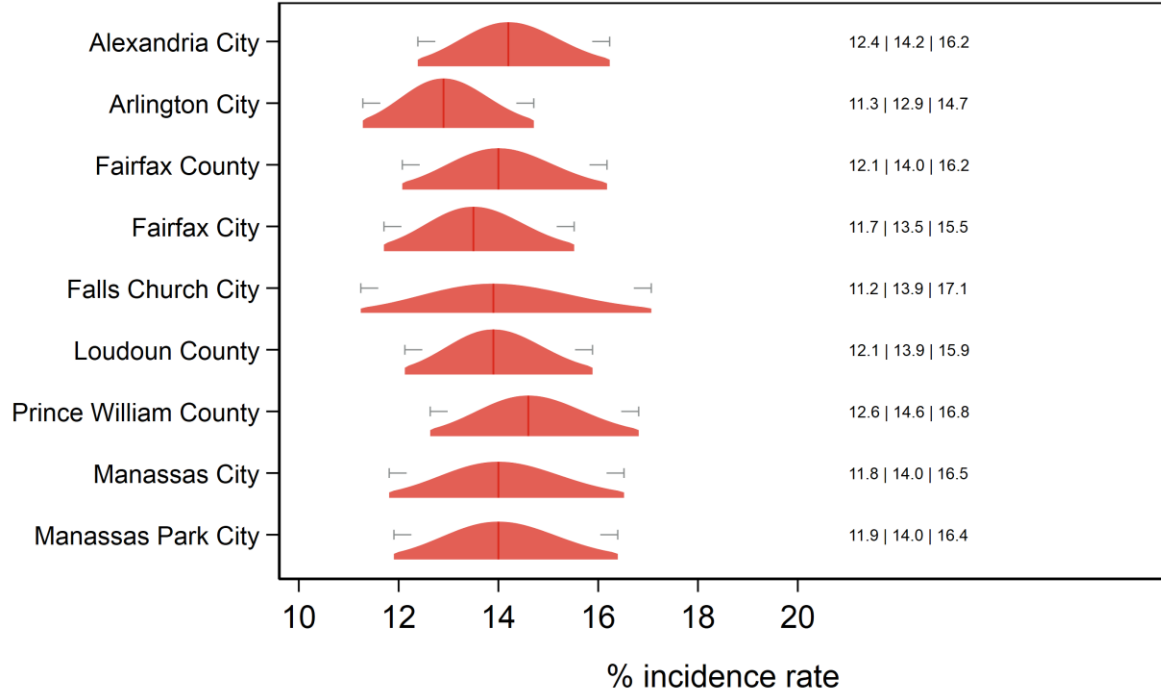
Text at right: 2-sided 95% LCB | Point Estimate | 2-sided 95% UCB
 Gray markers: 95% confidence interval

Ignored with pre-diabetes or borderline diabetes Thomas Jefferson and Piedmont HDs



Text at right: 2-sided 95% LCB | Point Estimate | 2-sided 95% UCB
 Gray markers: 95% confidence interval

Diagnosed with pre-diabetes or borderline diabetes? Alexandria, Fairfax, Arlington, Loudon, Prince William HDs



Text at right: 2-sided 95% LCB | Point Estimate | 2-sided 95% UCB
 Gray markers: 95% confidence interval

Additional diagnostics

Direct estimate is inside the 95% SAE Wilson CI: 24 areas.

Direct estimate is outside the 95% SAE Wilson CI: 109 areas.

SAE estimate is inside the 95% direct Wilson CI: 128 areas.

SAE estimate is outside the 95% direct Wilson CI: 5 areas.

SAE Wilson 95% CI is fully inside the 95% direct Wilson CI: 125 areas.

SAE Wilson 95% CI partially overlaps with the 95% direct Wilson CI: 8 areas.

SAE Wilson 95% CI and the 95% direct Wilson CI do not overlap: 0 areas.

SAE standard error is less than the direct standard error: 117 areas.

SAE standard error is greater than the (nonzero) direct standard error: 1 areas.

Direct standard error is zero: 15 areas.

Proportion of SAE variance due to ACS sampling error: min = 0.23%; med = 6.19%; max = 19.84%.

Proportion of SAE variance due to sampling error in regression coefficient estimates: min = 2.25%; med = 60.60%; max = 95.37%.

Proportion of SAE variance due to model selection: min = 0.23%; med = 31.83%; max = 97.52%.

Proportion of SAE variance due to area random effects: <identically zero>