



VIRGINIA'S  
Plan For Well-Being

# State Health Assessment

**VDH** VIRGINIA  
DEPARTMENT  
OF HEALTH



# What is the State Health Assessment?

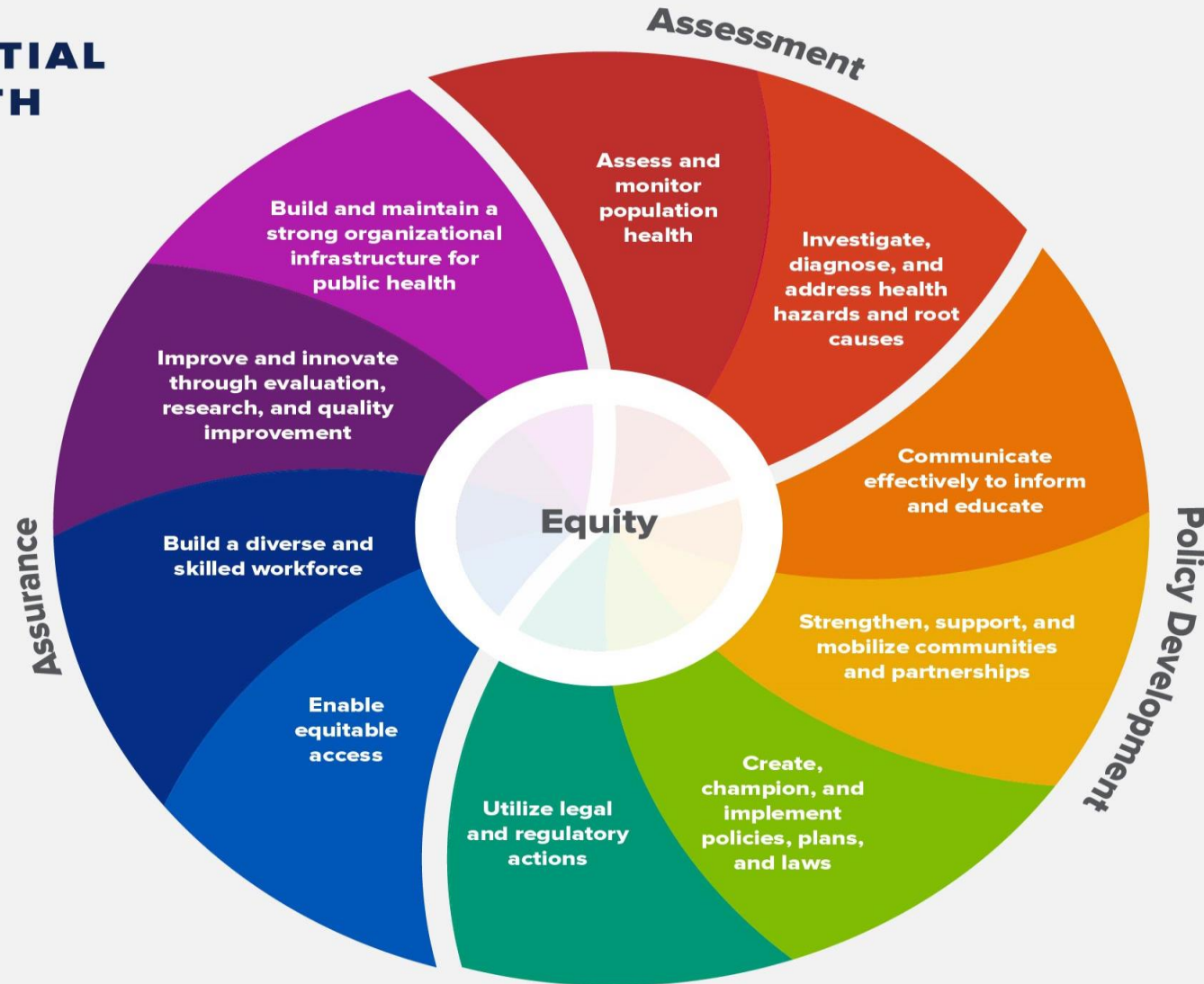




# THE 10 ESSENTIAL PUBLIC HEALTH SERVICES

*To protect and promote the health of all people in all communities*

The 10 Essential Public Health Services provide a framework for public health to protect and promote the health of all people in all communities. To achieve optimal health for all, the Essential Public Health Services actively promote policies, systems, and services that enable good health and seek to remove obstacles and systemic and structural barriers, such as poverty, racism, gender discrimination, and other forms of oppression, that have resulted in health inequities. Everyone should have a fair and just opportunity to achieve good health and well-being.



Source: de Beaumont Foundation

# Virginia Department of Health

# STRATEGIC PLAN

**Mission** | To protect the health and promote the well-being of all people in Virginia.

**Vision** | Become the healthiest state in the nation.

**Core Values** | Our culture values service, equity and making data driven decisions.

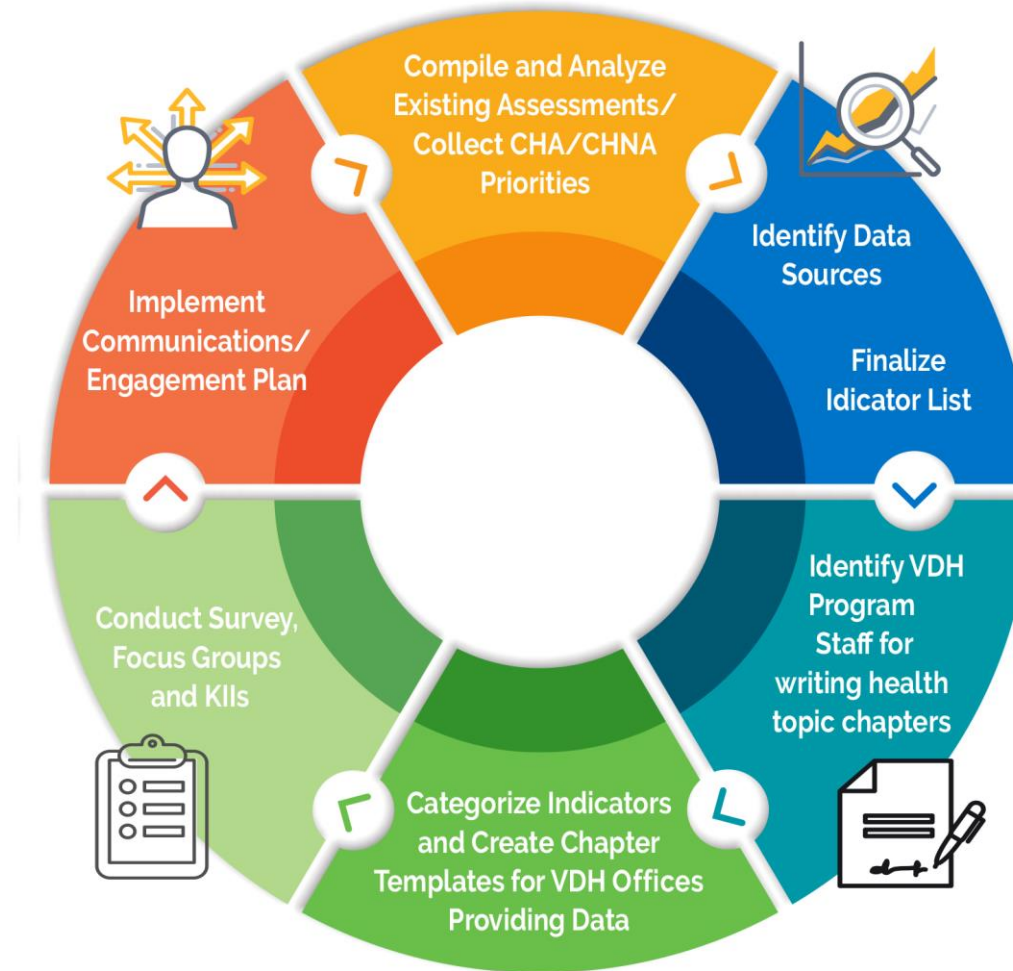
# Applying a Health Equity Lens

Key Concepts	Definition/Approach
Health Equity	<b>Health equity</b> exists when all people have an equal opportunity to be healthy, especially those who have experienced socioeconomic disadvantage, historical injustice and other avoidable inequalities that are often associated with race, gender, ethnicity, social position, sexual orientation and disability.
Applying a “health equity lens”	Who we engage How we engage What data we consider and how we analyze it How we report the data/report



# State Health Assessment (SHA)

## Assess the State



An overhead, circular crop of a photograph showing three people (two men and one woman) sitting around a light-colored round table. They are all looking down at books or laptops, appearing to be in a study or collaborative work session. The table is cluttered with open books, papers, and laptops. The background is a plain, light-colored floor.

# Populations in Focus

- LGBTQ Identity
- Youth
- Veterans
- People living with disabilities
- Virginians of color
- Refugee and immigrant population

# Qualitative Data Collection

- Focus Groups (youth, LGBTQ+, nursing mothers, Hispanic youth and Hispanic adults, disabled population)
- Statewide Survey
- Key Informant Interviews
- Photovoice project with youth 13-18 years old



# Milestones

Qualitative Assessments Complete

Data Presentations, Discussion and Prioritization

Publish SHA, Improvement Strategy Prioritization  
and Selection

Publish and Implement State Health Improvement Plan

# State Health Improvement Plan

- Reviews the results of the State Health Assessment
- Conducts a strategic assessment of the current environment and opportunities
- Apply criteria to prioritize issues
- Report and track both the health outcomes and the performance measures related to the priorities



# Criteria for Selection for State Health Improvement Plan

The Advisory Committee will finalize the indicators used in the SHA based on the following criteria:

- Magnitude/seriousness of health issue
- Ability to affect change
- Health equity - can we measure disproportionate effect between subpopulations?
- Root cause/SDOH - measure SDOH that impact multiple health outcomes
- Quality of the data
- Trend data available?
- Comparison data available?



# Roles and Responsibility of Advisory Committee

- Identify opportunities to partner and build on existing efforts in health/other sectors
- Identify issues and priority populations to determine what should be measured
- Review data collected and analyzed
- Prioritize issues for action

# Next Steps