



## Greetings from the Virginia Primary Care Office & State Office of Rural Health

### Community Photo Feature

Virginia State Health Commissioner, Dr. Colin Greene, took this photo from Route 675 on Massanutten Mountain in Page County, VA. From this point, the view of Luray, Shenandoah Valley, and Shenandoah National Park is breathtaking.

Dr. Greene submitted this photo to the 2021 VA-SORH Photo Contest.



### VA-SORH Updates

#### Updated COVID-19 Resources

For a compiled list of Virginia Department of Health, Communication, and External COVID-19 Resources, please visit our website linked below.



New resources include:

- [The Impact of COVID-19 on the Rural Health Care Landscape: Challenges and Opportunities](#)
- [NRHA Rural Vaccine Confidence Initiative](#)
- [VDH COVID-19 Therapeutics Virginia](#)

[COVID-19 Resources](#)

### Information & Resources for Providers & Healthcare Facilities



**Free Webinar: "Addressing Workforce Challenges in a Post-COVID World"**

**Tuesday, May 17, 2022 at 1:00 PM ET**

The Covid-19 pandemic forever changed many aspects of daily life, including the way we work. Healthcare has arguably been the most disrupted industry during this time. Driven largely by increased consumer demand, workforce burnout, and staff shortages, hospitals and health systems are now facing a challenging task of rebuilding a new workforce. This unprecedented effort requires a reimagining of the way we hire, train, and retain workers.

[To Register](#)

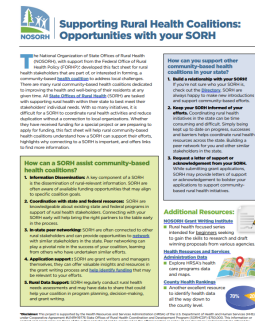
## Conversations on HealthCare: TV's Jane Pauley's Personal Story: Why Community Health Centers Matter to Her

Jane Pauley has been a familiar face on America's TV screens since she started on NBC's "Today" and continues as anchor of CBS "Sunday Morning." Her interest in mental health has grown through the years as she faced her own challenges and as she became connected to behavioral health leaders in her home state of Indiana. Now her name graces the front doors of the Jane Pauley Community Health Center and she's a powerful advocate for the services they, and all community health centers, provide.

[For More Information](#)

## Supporting Rural Health Coalitions: Opportunities with your SORH

A newly released NOSORH fact sheet helps rural community-based health coalitions understand how a State Office of Rural Health can support their efforts. Developed by NOSORH, with support from the Federal Office of Rural Health Policy, this fact sheet is intended for rural health stakeholders that are part of, or interested in forming, a community-based health coalition to address local challenges.



[For More Information](#)

## Just In: New 2022 County Health Rankings

The annual 2022 County Health Rankings have been released, complete with new measures, evidence-informed strategies and guidance on achieving a just recovery from the COVID-19 pandemic with economic security and health for all.

This actionable data, evidence, guidance and stories have broadened the nation's understanding about the wide range of factors – education, income, housing and more – that shape health. The pandemic revealed and worsened existing barriers to health and well-being such as racism, discrimination and disinvestment. This year's release focuses on a recovery that builds toward a healthier, just and more inclusive future.

[For More Information](#)

**Join us for a Public Listening Session on the CMS Rural Health Strategy "Refresh" for CMS Regions 1, 2, and 3**



The Centers for Medicare & Medicaid Services (CMS) Rural Health Council is hosting a public, virtual listening session for CMS Regions 1, 2, and 3 on May 19th to hear your feedback on its current [Rural Health Strategy](#) and help improve CMS's approach to advancing rural health.

The CMS Rural Health Strategy was developed in 2018 with input from rural communities, and focuses on five objectives to advance rural health:

- Apply a rural lens to CMS programs and policies
- Improve access to care through provider engagement and support
- Advance telehealth and telemedicine
- Empower patients in rural communities to make decisions about their healthcare
- Leverage partnerships to achieve the goals of the CMS Rural Health Strategy

[To Register](#)



### AgriSafe FarmResponse On-Demand Course

AgriSafe Network's FarmResponse is a 3.5-hour continuing education course developed by national experts to provide training on competencies necessary to provide appropriate mental healthcare for agricultural producers and their families.

Residents of Virginia may submit a scholarship request form to take the course at no cost.

[For More Information](#)

### CMS Framework for Health Equity 2022-2032

The CMS Framework for Health Equity provides a foundation for their work dedicated to advancing health equity, expanding coverage, and improving health outcomes. This includes strengthening infrastructure for assessment, creating synergies across the health care system to drive structural change, and identifying and working together to eliminate barriers to CMS-supported benefits, services, and coverage for individuals and communities who are underserved or disadvantaged and those who support them.

[For More Information](#)

### Behavioral Health Screening and Care Coordination for Rural Veterans in a Federally Qualified Health Center

Highlights the VA's nurse-led Collaborative System of Care (CSC) program's work in connecting veterans at rural Federally Qualified Health Centers (FQHCs) to the VA's behavioral health services and discusses the role care coordination can play in connecting rural veterans to other healthcare services. Details the efficacy of the CSC program and outlines the program's structure and screening process.

[For More Information](#)

Central Virginia Health Services (CVHS) and Piedmont Access to Health Services, Inc. (PATHS) each awarded \$200,000 to expand access to school-based health services



The U.S. Department of Health and Human Services (HHS), through the Health Resources and Services Administration (HRSA), awarded nearly \$25 million to improve and strengthen access to school-based health services in communities across the country. Awards will support local partnerships between schools and health centers to provide children and youth the comprehensive physical and mental health care they need.

[For More Information](#)

## Upcoming Meetings & Webinars



**National Telehealth Conference**

**May 16-17**

[To Register](#)



**United Way of SWVA 2022 Impact Awards**

**May 17**

[To Register](#)



**Spring 2022 Rural Health Clinical Congress**

**May 21**

[To Register](#)



**2022 Virginia Rural Health Clinic Summit**

**June 7-9**

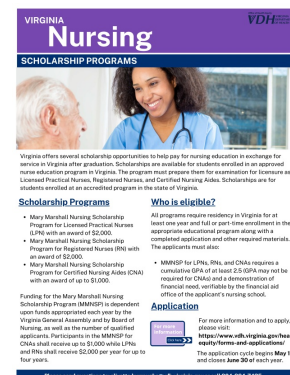
[To Register](#)

## State & Regional Funding Opportunities

The application cycles for Virginia Nursing Scholarship Programs for RNs, LPNs, & CNAs are now open!

**Application Cycles Deadline: Thursday June 30, 2022**

Virginia offers several scholarship opportunities to help pay for nursing education in exchange for service in Virginia after graduation. Scholarships are available for students enrolled in an approved nurse education program in Virginia. The program must prepare them for examination for licensure as a: Licensed Practical Nurses, Registered Nurses, and Certified Nursing Aides. Scholarships are for students enrolled at an accredited program in the state of Virginia.



[For More Information & To Apply](#)

**Call for Proposals: Robert Wood Johnson Foundation Pioneering Ideas**

## Registration Deadline: ongoing

As our current reality underscores, we live in a dynamic world—where unforeseen global events; new technologies; scientific discoveries; changes in our climate, economy, demographics; and more—continually shape where and how we live, learn, work and play. These changes will profoundly impact health equity in our society, from our individual health and the health of our families to the health of our communities.

What dramatic changes might we see in the next 5 to 15 years? What can we do today to create a better, more equitable tomorrow?

We seek to answer these questions, anticipate the future, and support unconventional approaches and breakthrough ideas that can help lead the way to a future where everyone in the United States can live their healthiest life possible.

[For More Information & To Apply](#)

---

## Improving Postpartum Maternal Outcomes for Populations Experiencing Disparities



**Letter of Intent Deadline: Wednesday, June 1, 2022 by 5 PM ET**

**Application Deadline: Wednesday, August 31, 2022 by 5 PM ET**

This Targeted PCORI Funding Announcement (Targeted PFA) seeks to fund large randomized controlled trials (RCTs) and/or well-designed observational studies comparing multicomponent strategies to improve early detection of, and timely care for, complications up to six weeks postpartum for groups more often underserved or experiencing the greatest disparities in health outcomes, including Black, American Indian/Alaska Native (AI/AN), Hispanic, rural, and low socioeconomic status (SES) populations.

[For More Information](#)



**The deadline to submit NHSC New Site applications has been extended**

**Extended Application Deadline: Tuesday, June 7, 2022 at 11:59 PM ET**

Eligible healthcare facilities can apply to become National Health Service Corps (NHSC)-approved sites. NHSC-approved sites provide outpatient, primary health care services to people in Health Professional Shortage Areas (HPSAs).

There will be an NHSC New Site Program Q&A Session on Thursday, May 19, 2022 from 11:30 a.m.-1:30 PM ET.

[For More Information](#)

---

## Comprehensive Opioid, Stimulant, and Substance Abuse Site-Based Program

**Application Deadline: Monday, June 17, 2022**

Through this opportunity, the Bureau of Justice Assistance seeks applications for funding

to develop, implement, or expand comprehensive programs in response to the overdose crisis and impacts of illicit opioids, stimulants, or other substances. This program provides resources to support state, local, tribal, and territorial efforts to respond to illicit substance use and misuse; reduce overdose deaths; promote public safety; and support access to prevention, harm-reduction, treatment, and recovery services in the community and justice system.

**Eligible Applicants:**

- Category 1: Local or Tribal Applications
  - City or township governments
  - County governments
  - City, township, or county governments in rural areas (as defined in solicitation)
  - Native American tribal governments (federally recognized)
- Category 2: State Applications
  - State governments

[For More Information & To Apply](#)

---

**Community Health Worker Training Program**

**Application Deadline: Tuesday, June 14, 2022**



This funding is intended to support projects that will increase the number of Community Health Workers (CHWs) and equip them with the skillsets needed to provide effective community outreach, build trust with communities, support connections to and retention in care and support services, and other strategies to increase access to care and to assist individuals in prevention services, and recovery from the COVID-19 pandemic and other public health emergencies in underserved communities. These combined efforts are intended to advance public health, strengthen the public health workforce, reduce health disparities, and help underserved populations achieve health equity.

[For More Information & To Apply](#)



**Foundation for Rural Service Community Grant Program**

**Application Deadline: Wednesday, August 31, 2022**

Grants to support a variety of local efforts to build and sustain a high quality of life in rural communities across America. Focus areas include business development, community development, education, and telecommunications.

[For More Information](#)



**"Like" us on Facebook to receive live updates on Virginia rural health issues and important messages from our community partners on your Facebook News Feed.**

Visit the VA-SORH Facebook Page

