

# VDH Partner Briefing Call Testing Update

August 14, 2020

Metrics Update as of August 13, 2020



**VIRGINIA'S  
HEALTH  
IS IN OUR  
HANDS.**  
Do your part,  
stop the spread.

# COVID-19 Cases in Virginia



Dashboard Updated: 8/13/2020, Data entered by 5:00 PM the prior day.

**Total  
Cases\***

**103,622**

Confirmed+  
99,428

Probable+  
4,194

**Total  
Hospitalizations\*\***

**8,592**

Confirmed+  
8,540

Probable+  
52

**Total  
Deaths**

**2,363**

Confirmed+  
2,248

Probable+  
115

**Select Measure**  
(Affects Map and Bar Chart)

- ☒ Cases  
☐ Hospitalizations  
☐ Deaths

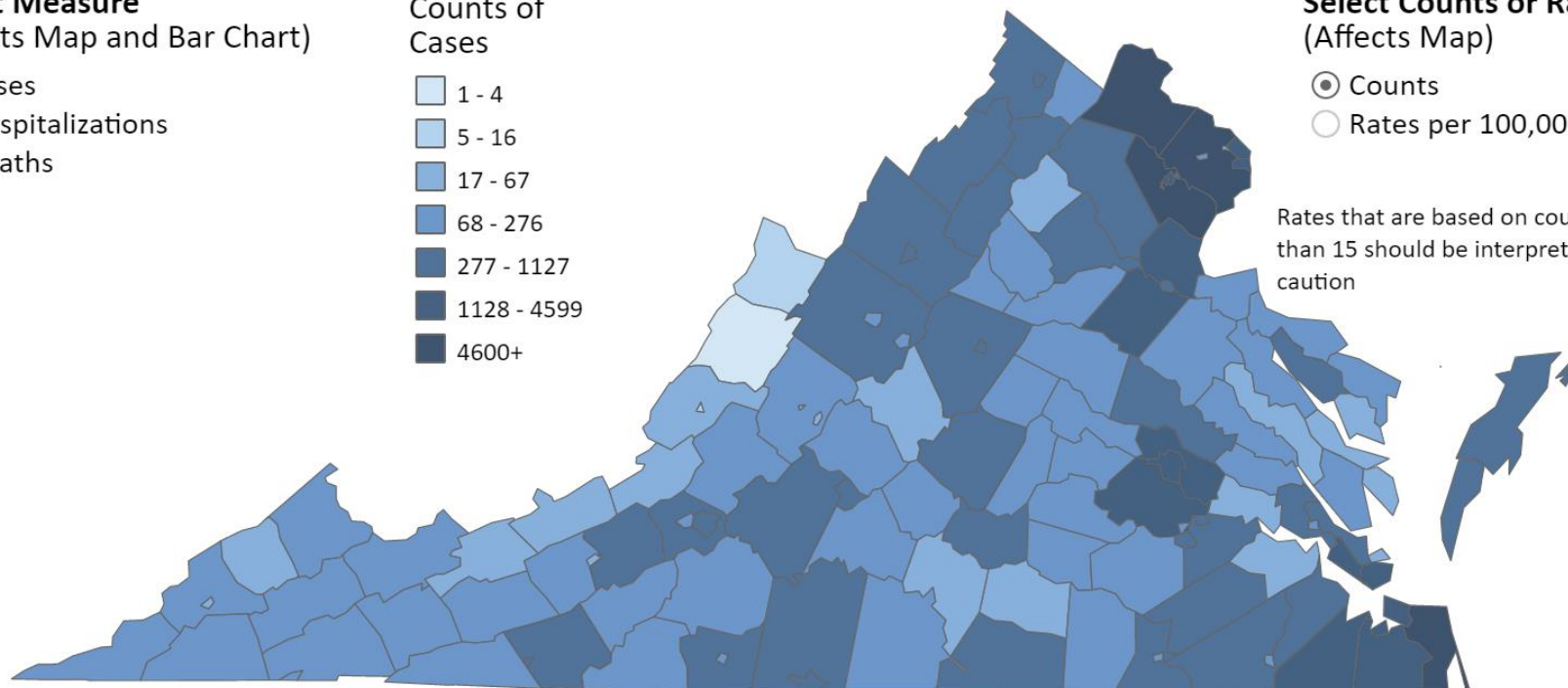
Counts of  
Cases

- ☐ 1 - 4  
☐ 5 - 16  
☐ 17 - 67  
☐ 68 - 276  
☐ 277 - 1127  
☐ 1128 - 4599  
☐ 4600+

**Select Counts or Rates**  
(Affects Map)

- ☒ Counts  
☐ Rates per 100,000

Rates that are based on counts less than 15 should be interpreted with caution





# COVID-19 Cases in Virginia: Testing



Dashboard Updated: 8/13/2020, Data entered by 5:00 PM the prior day.

## Select Health District from Drop Down Menu

(Affects Number of Testing Encounters, Current Positivity Rate, and Both Bar Charts)

(All)

## Select PCR\* or Total Tests from Drop Down Menu

(Affects Table and Both Bar Charts)

PCR Only

All Health Districts  
Testing Encounters PCR Only

1,301,909

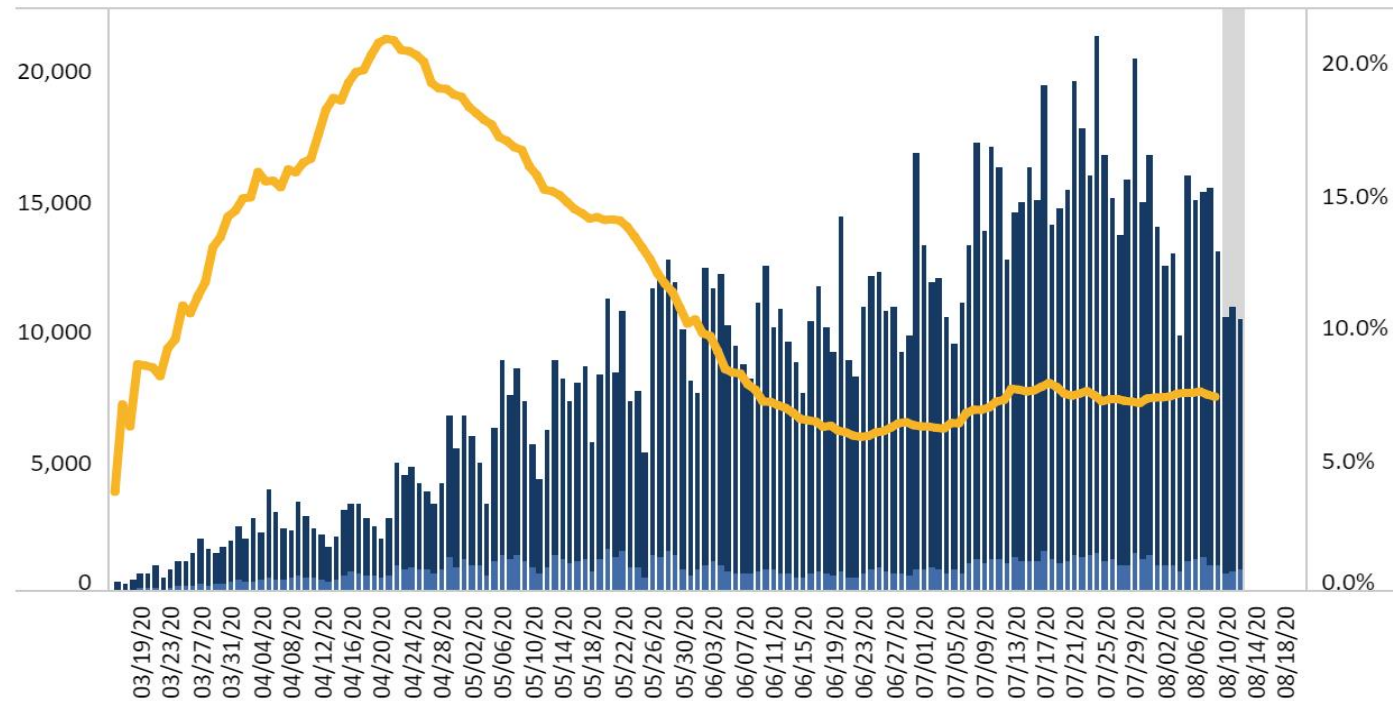
All Health Districts  
Current 7-Day Positivity Rate PCR Only

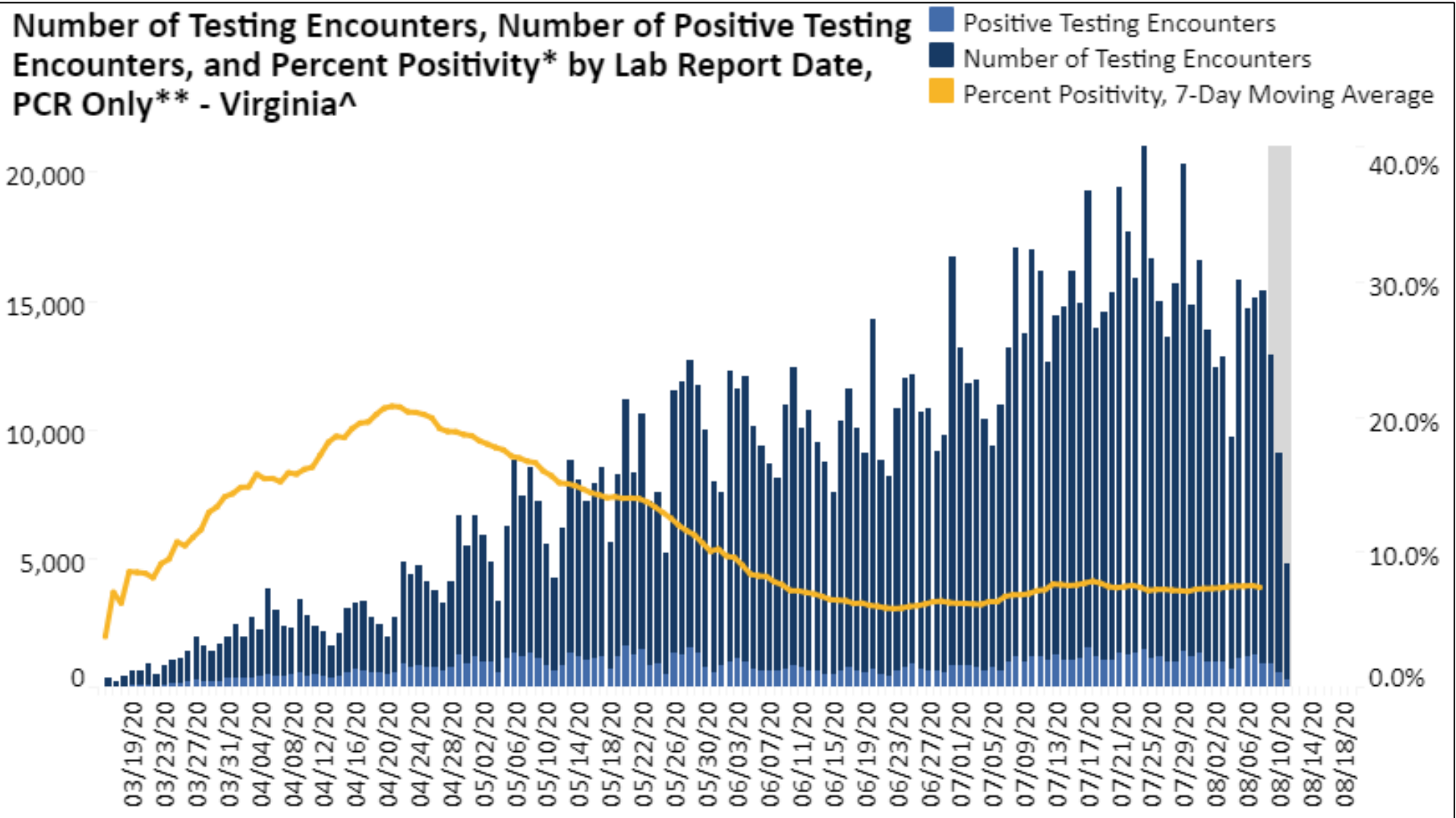
7.3%

## Testing Encounters by Health District, PCR Only

Fairfax	151,632
Prince William	81,524
Virginia Beach	70,799
Henrico	65,695
Chesterfield	61,165
Loudoun	55,635
Peninsula	49,916
Rappahannock	42,523
Norfolk	42,626
Thomas Jefferson	40,731
Roanoke	42,903
Richmond	38,236
Chesapeake	39,087
Lord Fairfax	36,548
Central Shenandoah	35,578
Arlington	35,132
Central Virginia	33,521
Crater	28,366

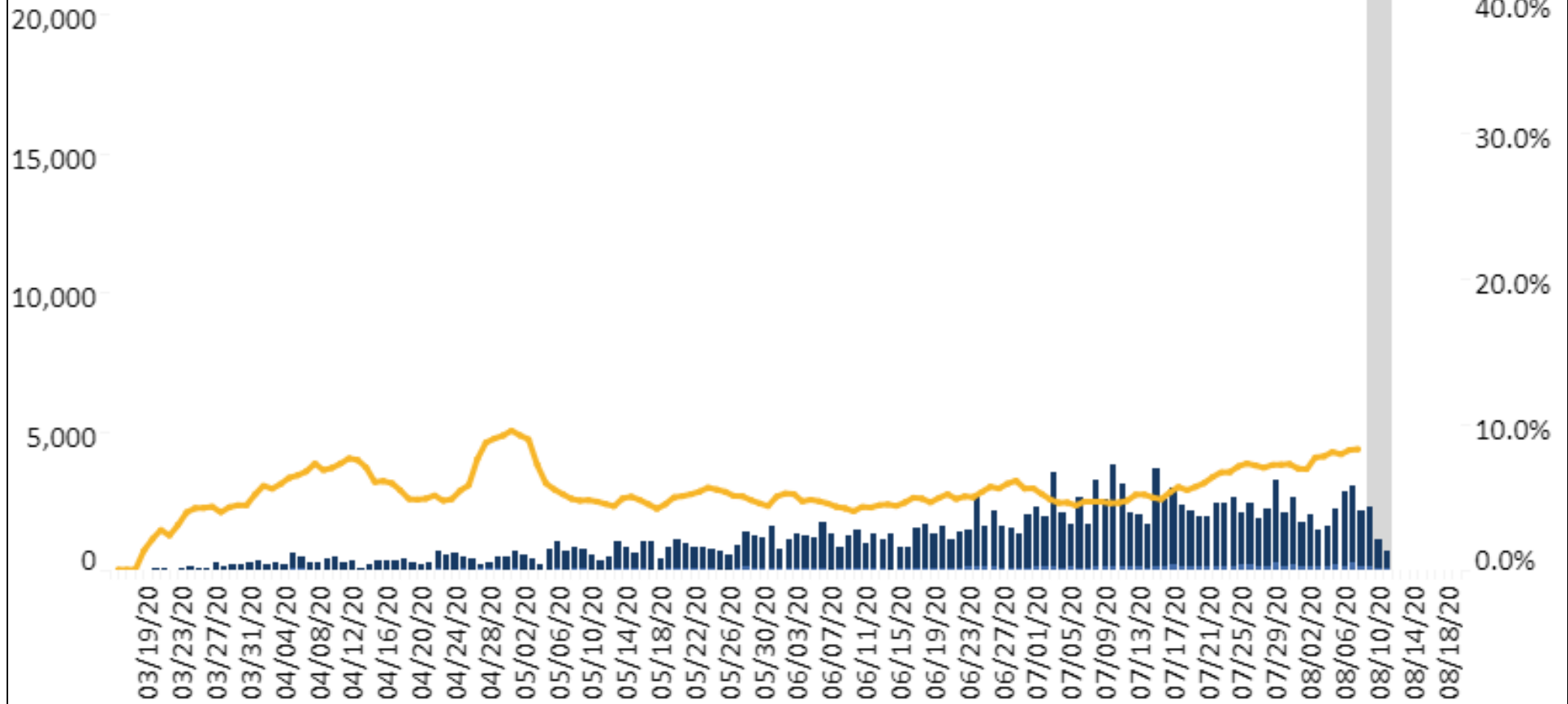
## Number of Testing Encounters, Number of Positive Testing Encounters, and Percent Positivity\*\* by Lab Report Date - All Health Districts, PCR Only





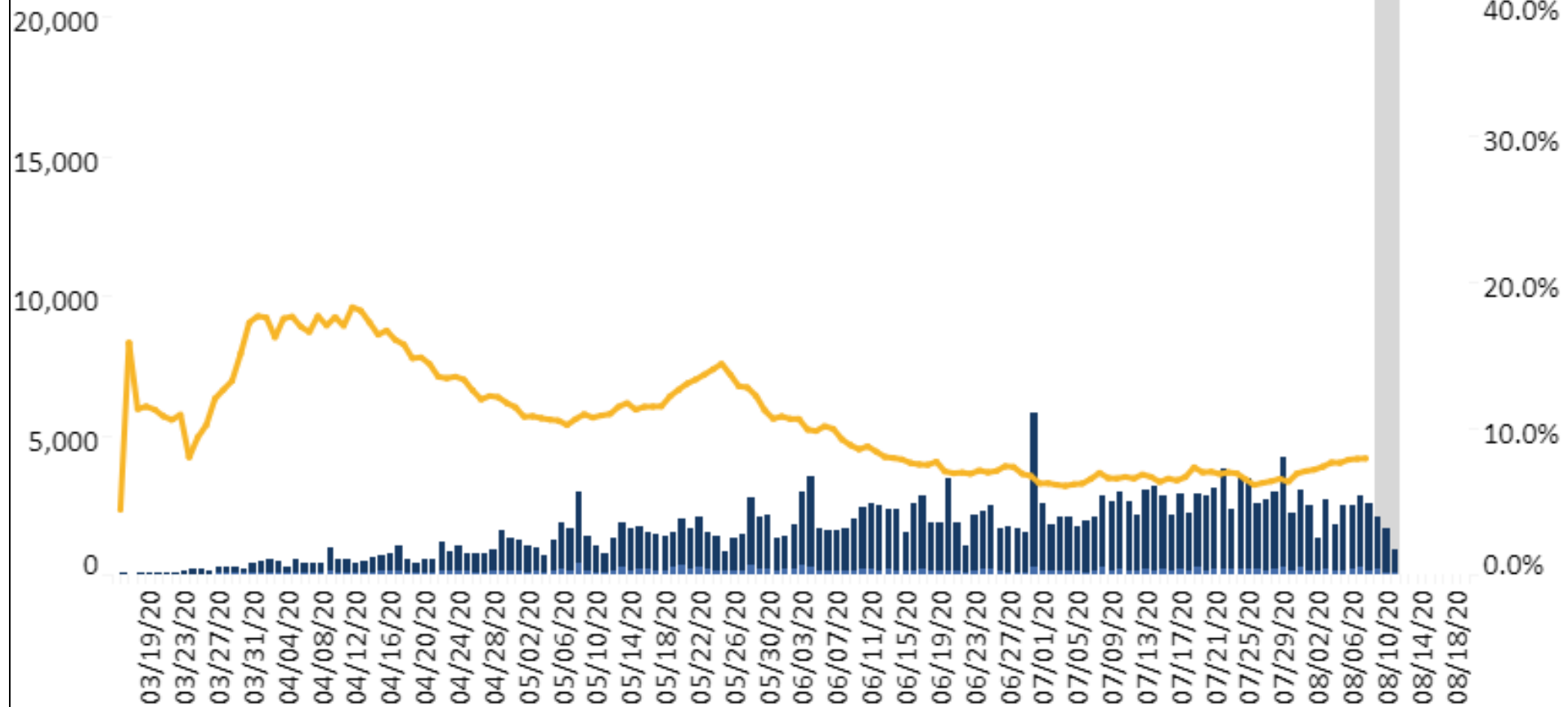
**7.1% Positivity**

Number of Testing Encounters, Number of Positive Testing Encounters, and Percent Positivity by Lab Report Date, PCR Only - Southwest Region



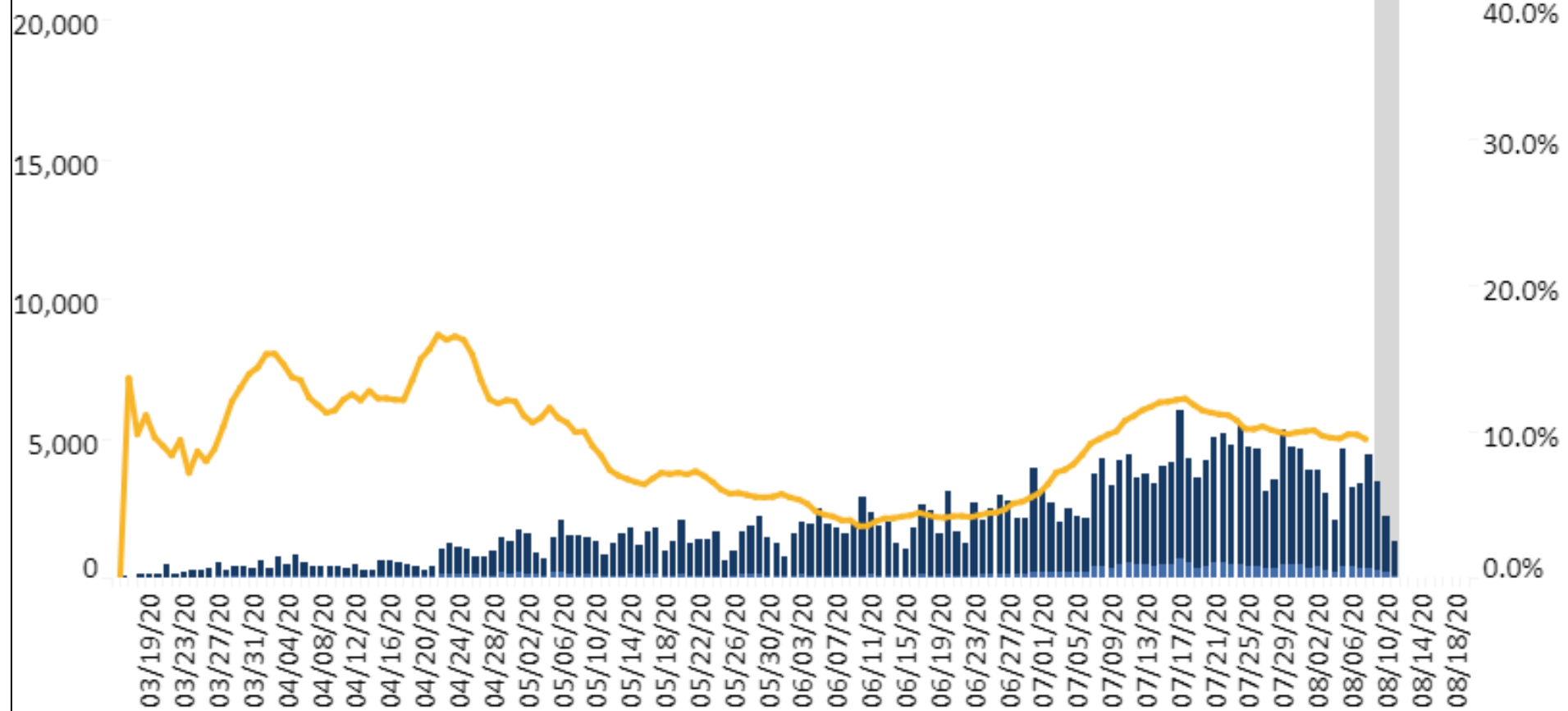
8.3% Positivity

Number of Testing Encounters, Number of Positive Testing Encounters, and Percent Positivity by Lab Report Date, PCR Only - Central Region



7.9% Positivity

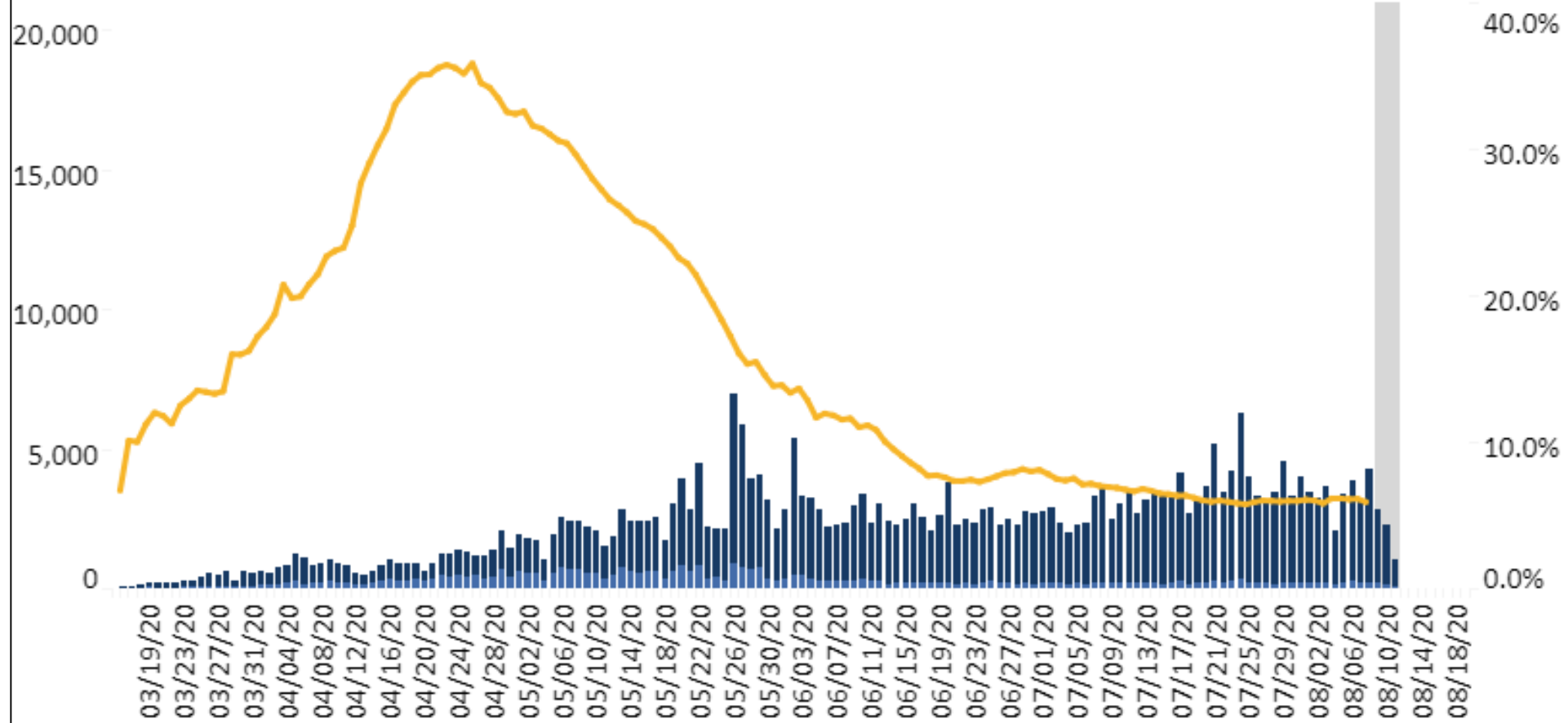
Number of Testing Encounters, Number of Positive Testing Encounters, and Percent Positivity by Lab Report Date, PCR Only - Eastern Region



9.5% Positivity



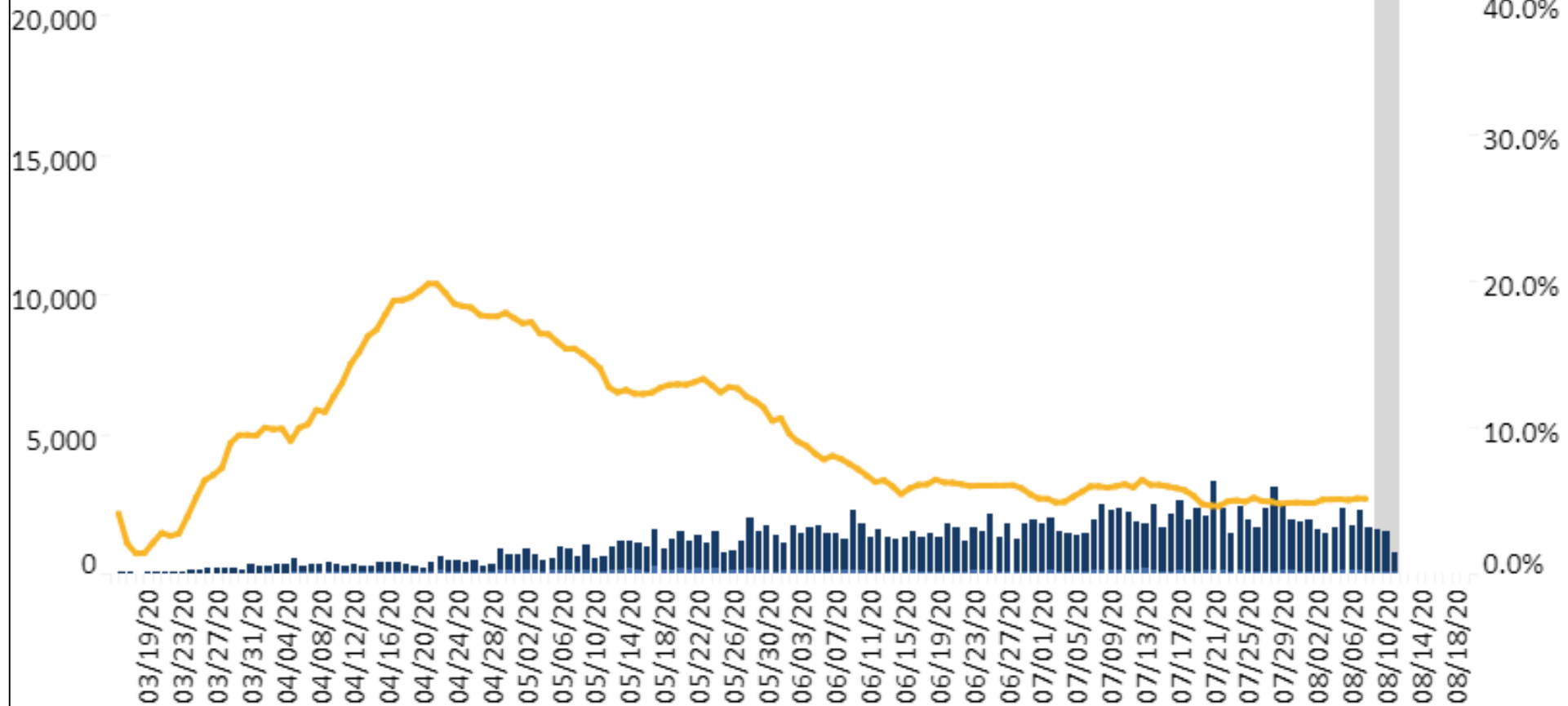
Number of Testing Encounters, Number of Positive Testing Encounters, and Percent Positivity by Lab Report Date, PCR Only - Northern Region



5.9% Positivity



Number of Testing Encounters, Number of Positive Testing Encounters, and Percent Positivity by Lab Report Date, PCR Only - Northwest Region



5.1% Positivity

# Reducing Turnaround Times (TAT)

