

The Public Health Response to Violence

Public Health Preparedness Summit
September 28, 2022

Violence Prevention

- Violence prevention efforts have historically focused on particular forms of violence:
 - sexual assault
 - suicide
 - domestic violence
 - bullying
 - gang violence
 - gun violence



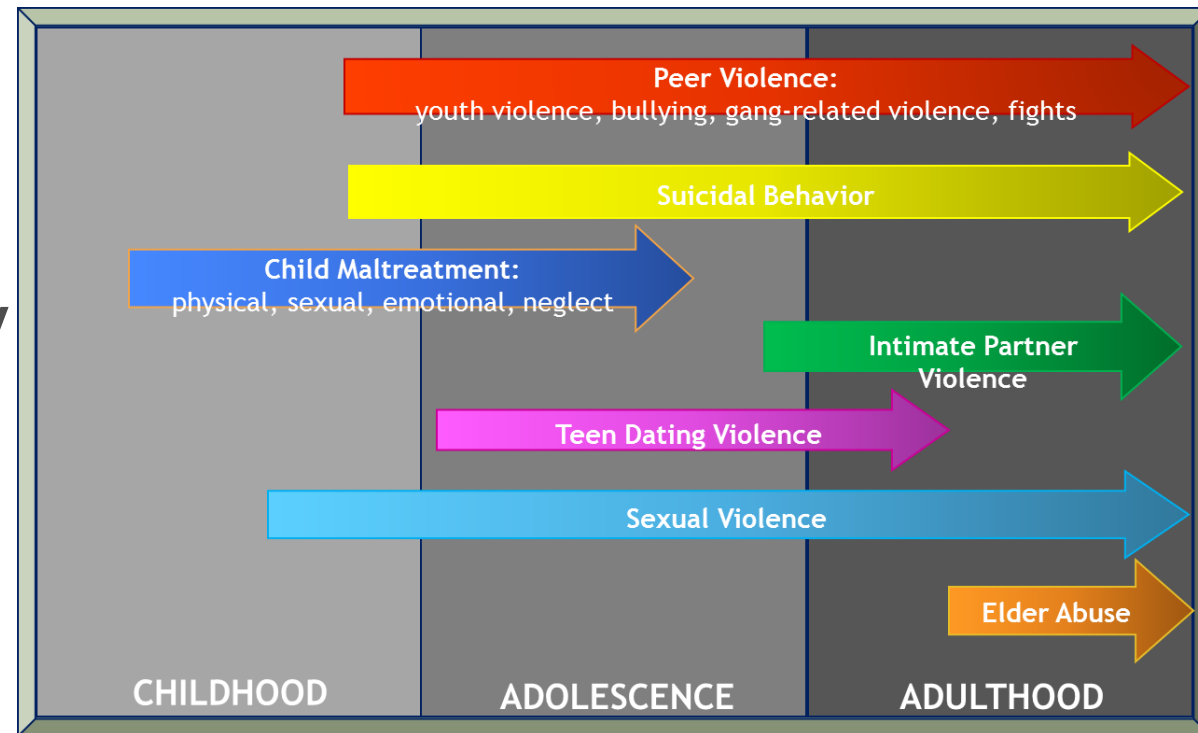
Violence: VDH Data Sources

- **Youth population health survey** - Office of Family Health Services
- **Emergency medical service responses** - Office of Emergency Medical Services
- **Hospital trauma registry** - Office of Emergency Medical Services
- **Emergency department visits** - Office of the Epidemiology
- **Inpatient hospitalizations** - Office of Family Health Services via Virginia Health Information
- **Medical examiner reviewed deaths** - Office of the Chief Medical Examiner

Violence Prevention

- Different forms of violence are strongly interconnected:

- Victims of one form of violence are likely to experience other forms
- Those who have been violent in one context are likely to be violent in another
- Different forms of violence share common consequences: beyond physical injuries and deaths consequences can include mental, emotional and physical health and social problems across the lifespan
- Different forms of violence share common risk and protective factors



Gun Violence

- Gun violence is not just in mass shootings but also in cases of domestic violence, suicide, community violence
- Guns have the potential to greatly amplify violence
- Use of a gun rather than a knife or another readily available weapon tends to make violent acts more deadly
- Gun Locks: pros and cons
- Guns as a method of violence



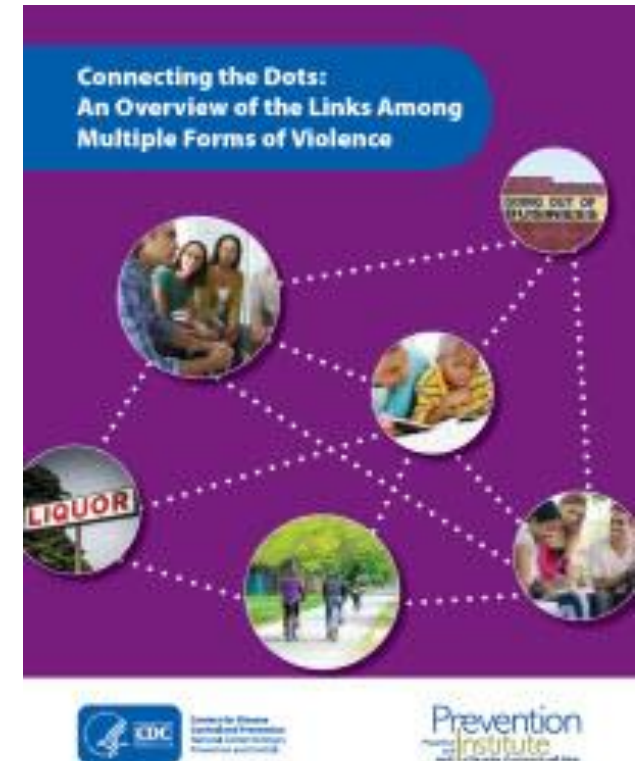
Socio-Ecological Model

- Complex interplay between levels
- Range of risk and protective factors
- Factors at one level influence factors at another level
- Necessary to act across multiple levels of the model at the same time




Shared Risk and Protective Factors

- Prevent multiple forms of violence simultaneously
- Develop new partnerships
- Leverage resources/funding streams
- Consider a larger pool of strategies
- Social Determinants of Health
- Larger impact beyond violence prevention



Individual Risk Factors

	CM	TDV	IPV	SV	YV	Bullying	Suicide	Elder Abuse
Low education	X	X	X		X	X	X	
Lack of non-violent problem solving skills	X	X	X	X	X	X	X	X
Poor behavior/ impulse control	X	X	X	X	X		X	
Violent victimization	X	X	X	X	X	X	X	X
Witnessing violence	X	X	X	X	X	X	X	
Mental Health Problems	X	X	X		X		X	X
Substance use	X	X	X	X	X	X	X	X

NOTE: CM (Child Maltreatment), TDV (Teen Dating Violence), IPV (Intimate Partner Violence), SV (Sexual Violence), YV (Youth Violence)

Source: Wilkins, N., Tsao, B., Hertz, M., Davis, R., Klevens, J. (2014). *Connecting the Dots: An Overview of the Links Among Multiple Forms of Violence*. Atlanta, GA: National Center for Injury Prevention and Control, Centers for Disease Control and Prevention Oakland, CA: Prevention Institute.

Violence Prevention

- To impact multiple forms of violence, prevention efforts should start early and continue across the lifespan
- Focus efforts on:
 - Child and adolescents to achieve long-term impact to include preventing Adverse Childhood Experiences (ACEs)
 - Populations and communities at highest risk of experiencing or perpetrating violence to include recognizing the impact of structural racism and institutional racism
 - Focus efforts on shared risk and protective factors
 - Identify, implement and increase approaches that have cross-cutting impact



For more Information

Connecting the Dots:

An Overview of the Links Among Multiple Forms of Violence

https://www.cdc.gov/violenceprevention/pub/connecting_dots.html

Heather Board, MPH

Director, Division of Prevention and Health Promotion

(804) 864-7738

Heather.Board@vdh.Virginia.gov