

RSV/Influenza/COVID/Mpx Updates

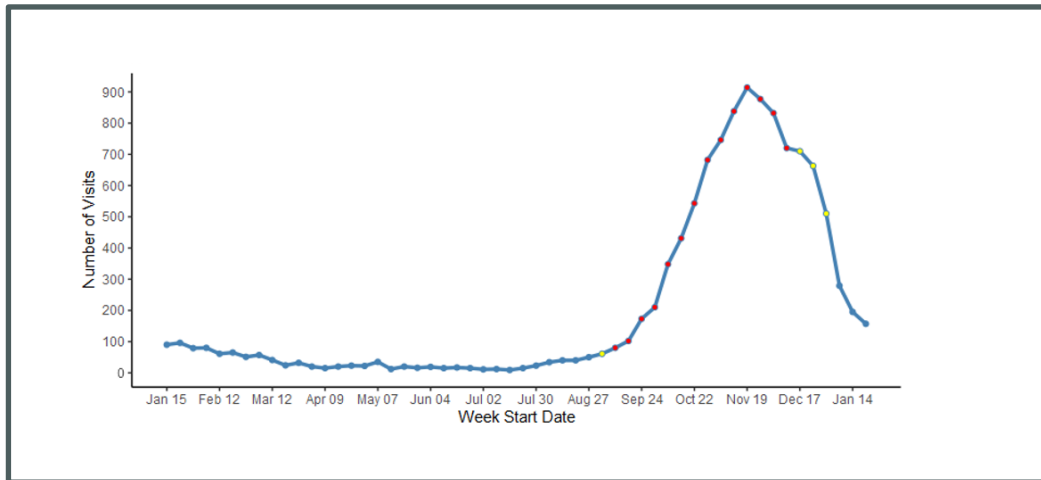
***Diagnosed Respiratory Syncytial Virus (RSV)**

1/14– 1/20 (MMWR Week 3)	1/21– 1/27 (MMWR Week 4)
195 visits	157 (-19%)
* RSV - ED and urgent care visits that include RSV in the discharge diagnosis (not necessarily confirmed cases). Percent change is from week prior.	

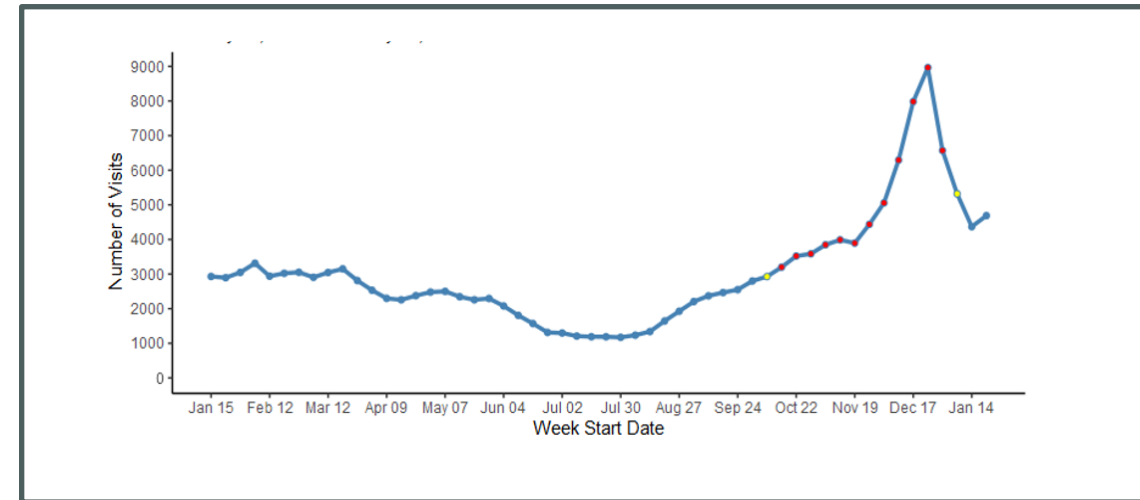
***Influenza-Like Illness (Excluding Diagnosed COVID-19) ED and Urgent Care Visits**

1/14– 1/20 (MMWR Week 3)	1/21– 1/27 (MMWR Week 4)
4,368 visits	4,687 (+7%)
* ILI - ED and urgent care visits with a chief complaint of 'flu' or fever + sore throat/cough. Visits with diagnosed COVID-19 are excluded. Percent change is from week prior	

**Weekly ED and Urgent Care Visits with Diagnosed RSV
1/15/23 – 1/27/24**



**Weekly ED and Urgent Care Visits for ILI Excluding Diagnosed COVID-19
01/15/23 – 1/27/24**



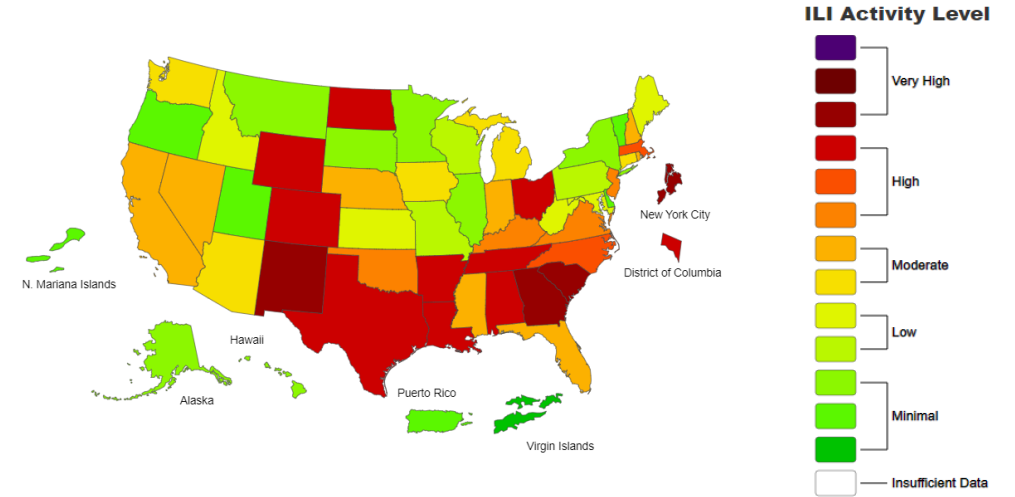
Source: VDH Weekly Respiratory Disease Surveillance Report. Percentage change is calculated off prior week's visits. Data are preliminary and subject to change. RSV Net: <https://www.cdc.gov/rsv/research/rsv-net/dashboard.html>

Virginia: Respiratory Disease Situation Summary

National View

For Week ending January 27:

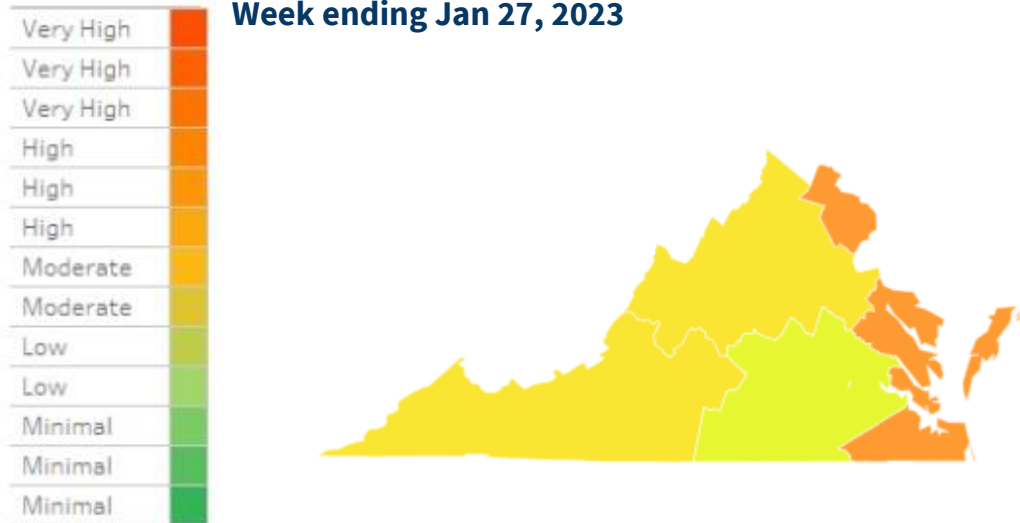
- Seasonal influenza activity is elevated and continues to increase in most parts of the country.
 - Cumulative hospitalization rate is 47.8 per 100k
 - After several weeks of increases in key flu indicators a single week of decrease has been noted. CDC will continue to monitor for a second period of increased influenza activity that often occurs after the winter holidays.



Source: [CDC Fluview \(10/21\)](#)

ILI Activity Level by Region

Week ending Jan 27, 2023



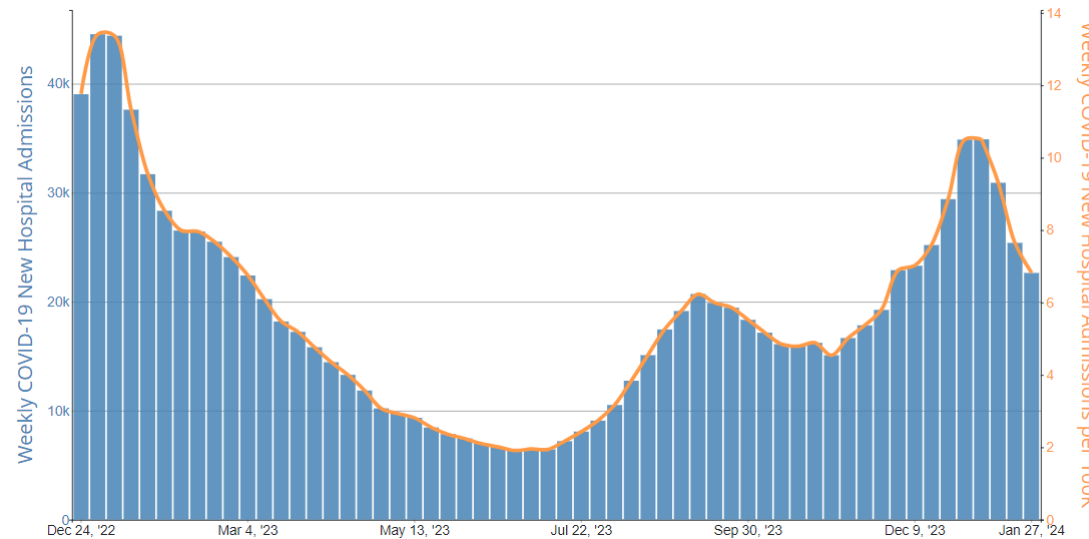
Virginia View

- For the week ending January 27, 2024; Virginia has **high** ILI activity
 - 3 regions are at moderate ILI activity levels and 2 region is at high ILI activity levels .
 - VA investigated 9 influenza outbreaks during the 2023-2024 season
 - VA reported 2 influenza associated pediatric death for the 2023-2024 season
- VDH is sharing information with key stakeholders and the public:
 - [External flu dashboard](#) updated every Thursday
 - Respiratory Disease Report posted externally and shared every Friday (email flu@vdh.virginia.gov to request the report.

National View – Week Ending January 27, 2024:

- New hospital admissions of patients with confirmed COVID-19 decreased **-10.9%** to 3,628 previous week 7-day average
- **2.0%** of ED visits were with Diagnosed COVID-19

Weekly COVID-19 New Hospital Admissions and % ED visits with Diagnosed COVID-19 in the United States Reported to CDC (2023)



Virginia Data: Week ending January 27, MMWR week 4:

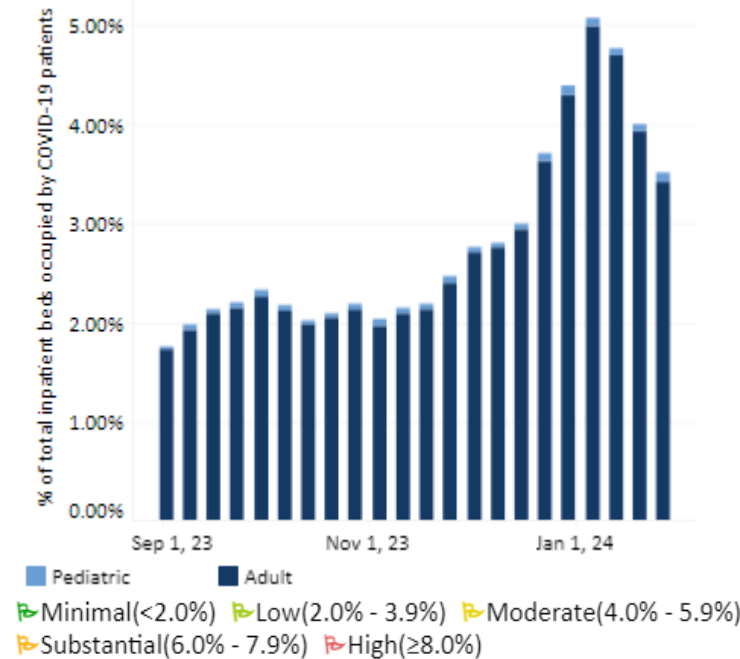
- **2.22%** of ED visits were for diagnosed COVID-19 (10.1% decrease from previous week)
- **3.51%** of inpatient beds in use for COVID-19 (12.5% decrease from previous week)

% Beds Occupied by Patients with COVID-19 is **Low** ↗

Weekly Percent of Emergency Department Visits for Diagnosed COVID-19 in Virginia, August 2023 – January 2024



COVID-19 Hospital Beds in Use for COVID-19 Virginia, August 2023 – January 2024



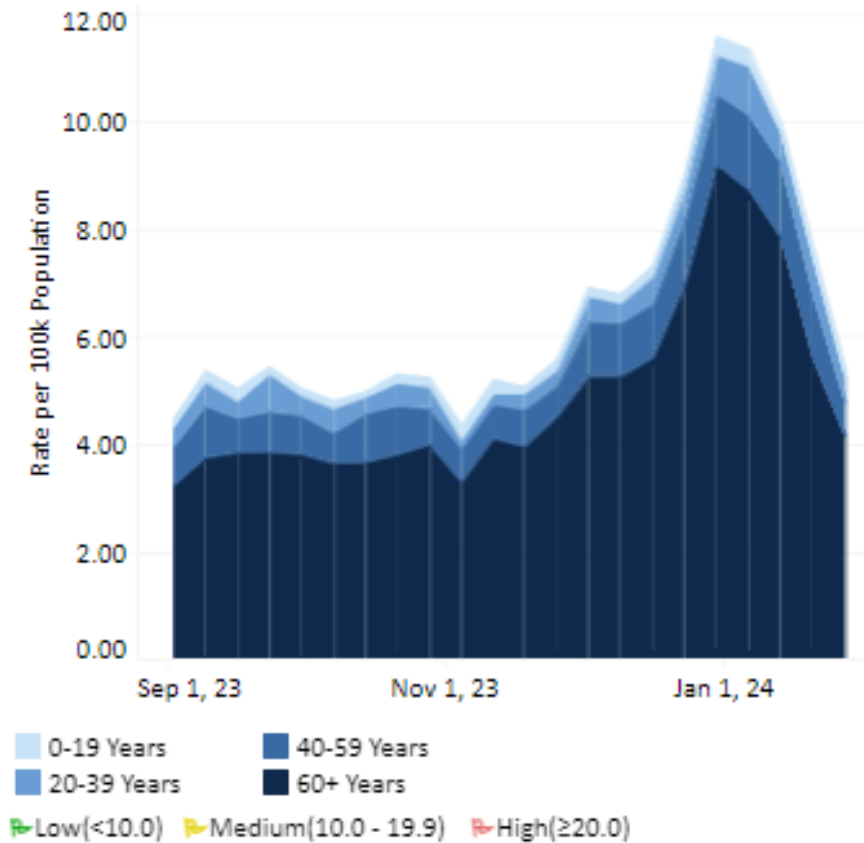
*Source: [CDC COVID Data Tracker](#), [VDH COVID-19 Dashboard](#)

VDH Weekly Respiratory Disease Surveillance Report. Percentage change is calculated off updated case numbers from week prior.

*Data comparisons: Wednesday-Wednesday

Virginia's COVID-19 Hospital Admissions for the week ending January 27, 2024:

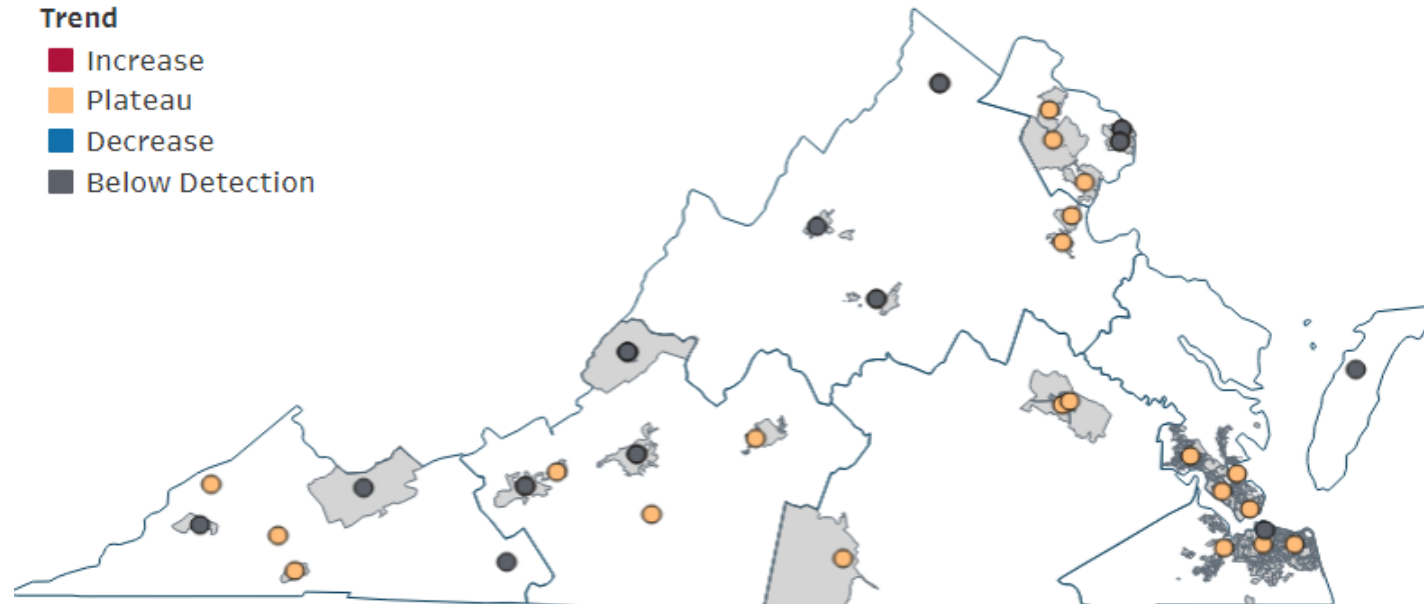
- **5.45** Hospital Admissions per 100,000 population
 - **Decreased 29.1%** from previous week



New COVID-19 Hospital Admissions are **Low** ↗

COVID-19 Wastewater Surveillance

- Week ending January 21:



- This map of Virginia shows the locations and overall viral load trends of the wastewater collection sites enrolled in the Sentinel Monitoring Program.
- The trend is indicated by the color of the 'dot'. See legend below. Not all sites produce data every week, so there may be gray 'No Trend Available' dots

Source: [VDH Wastewater Dashboard](#)