

RSV/Influenza/COVID/Mpox Updates

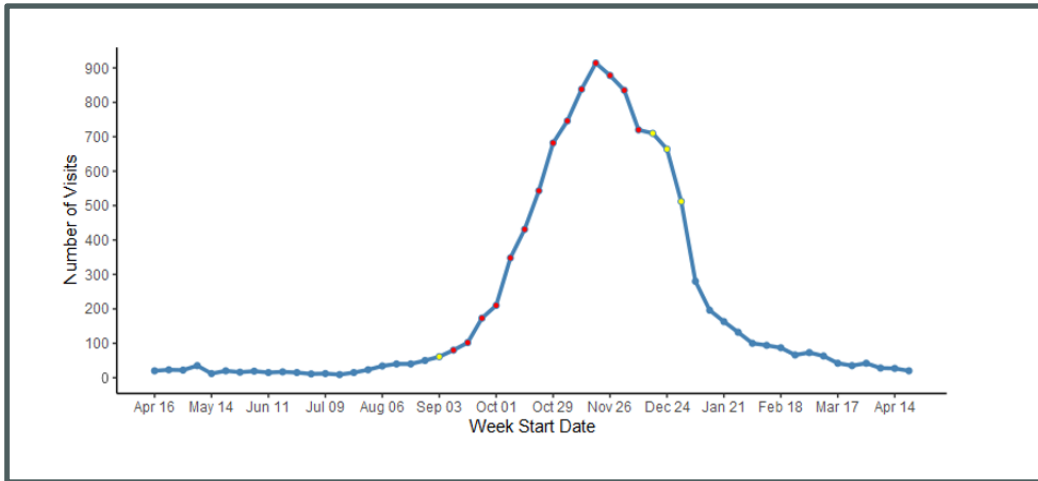
***Diagnosed Respiratory Syncytial Virus (RSV)**

04/14- 04/20 (MMWR Week 16)	04/21- 04/27 (MMWR Week 17)
27 visits	20 visits (-26%)
* RSV - ED and urgent care visits that include RSV in the discharge diagnosis (not necessarily confirmed cases). Percent change is from week prior.	

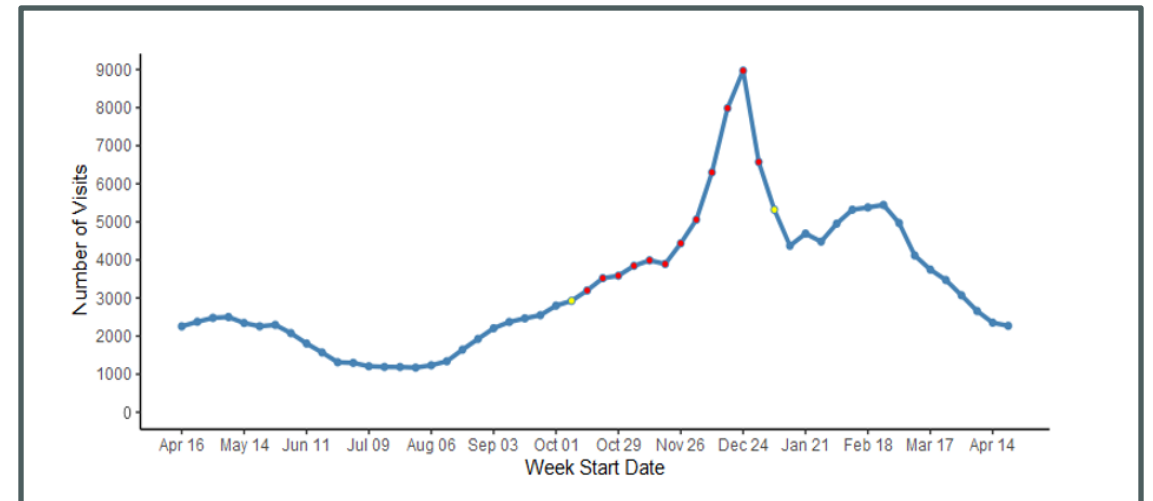
***Influenza-Like Illness (Excluding Diagnosed COVID-19) ED and Urgent Care Visits**

04/14- 04/20 (MMWR Week 16)	04/21- 04/27 (MMWR Week 17)
2,352 visits	2,269 visits (<5%)
* ILI - ED and urgent care visits with a chief complaint of 'flu' or fever + sore throat/cough. Visits with diagnosed COVID-19 are excluded. Percent change is from week prior	

**Weekly ED and Urgent Care Visits with Diagnosed RSV
04/16/23 – 04/27/24**



**Weekly ED and Urgent Care Visits for ILI Excluding Diagnosed COVID-19
4/16/23 – 04/27/24**

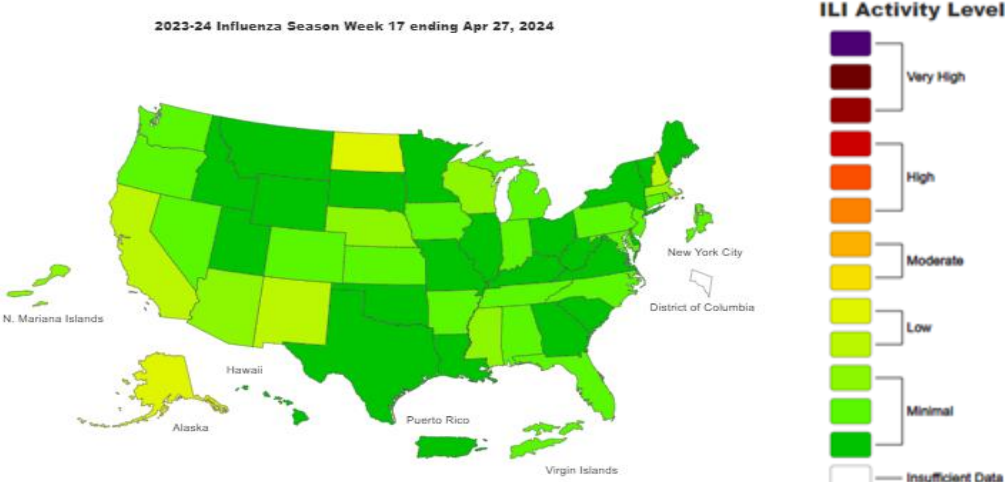


Source: VDH Weekly Respiratory Disease Surveillance Report. Percentage change is calculated off prior week's visits. Data are preliminary and subject to change. RSV Net: <https://www.cdc.gov/rsv/research/rsv-net/dashboard.html>

National View

For Week ending April 27:

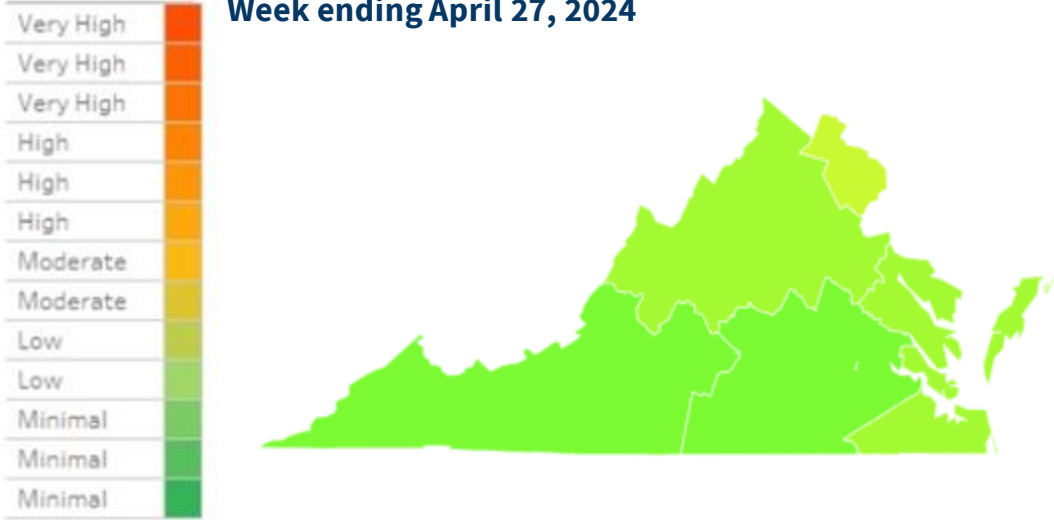
- Cumulative hospitalization rate is 79.8 per 100k
- Seasonal influenza activity continues to decline nationally and in most areas of the country.
- Nationally, the number of weekly flu hospital admissions has been decreasing since January.



Source: [CDC Fluview \(10/21\)](#)

ILI Activity Level by Region

Week ending April 27, 2024



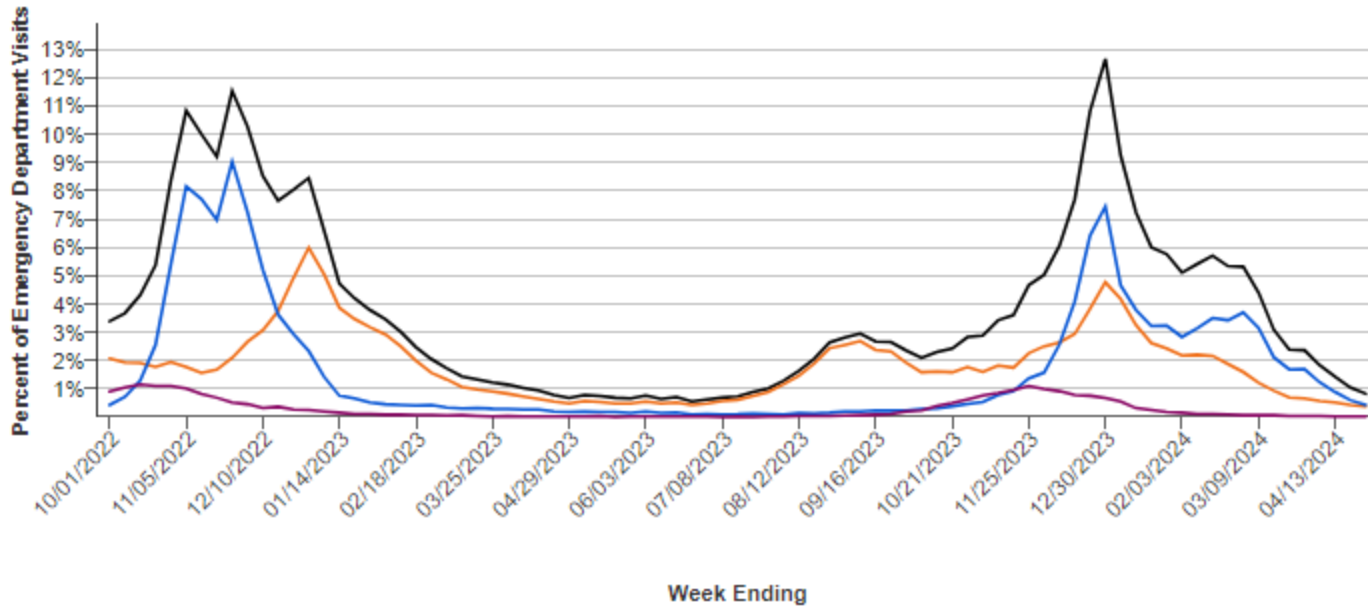
Virginia View

- For the week ending April 27, 2024; Virginia has **minimal** ILI activity
 - 1 regions is at low ILI activity level, and 4 regions are at minimal ILI activity levels.
 - VA investigated 120 influenza outbreaks during the 2023-2024 season
 - VA reported 3 influenza associated pediatric death for the 2023-2024 season
- VDH is sharing information with key stakeholders and the public:
 - [External flu dashboard](#) updated every Thursday
 - Respiratory Disease Report posted externally and shared every Friday (email) flu@vdh.virginia.gov to request the report.

Source: [VDH Weekly Influenza Activity Report](#), [Weekly U.S. Influenza Surveillance Report](#)

ED Visits for Viral Respiratory Illness, VA

Emergency Department Visits for Viral Respiratory Illness, Virginia



Week Ending: 04/27/2024
Combined: 0.8%
Influenza: 0.4%
COVID-19: 0.4%
RSV: 0.0%

Select a virus to add or remove it from the graphic

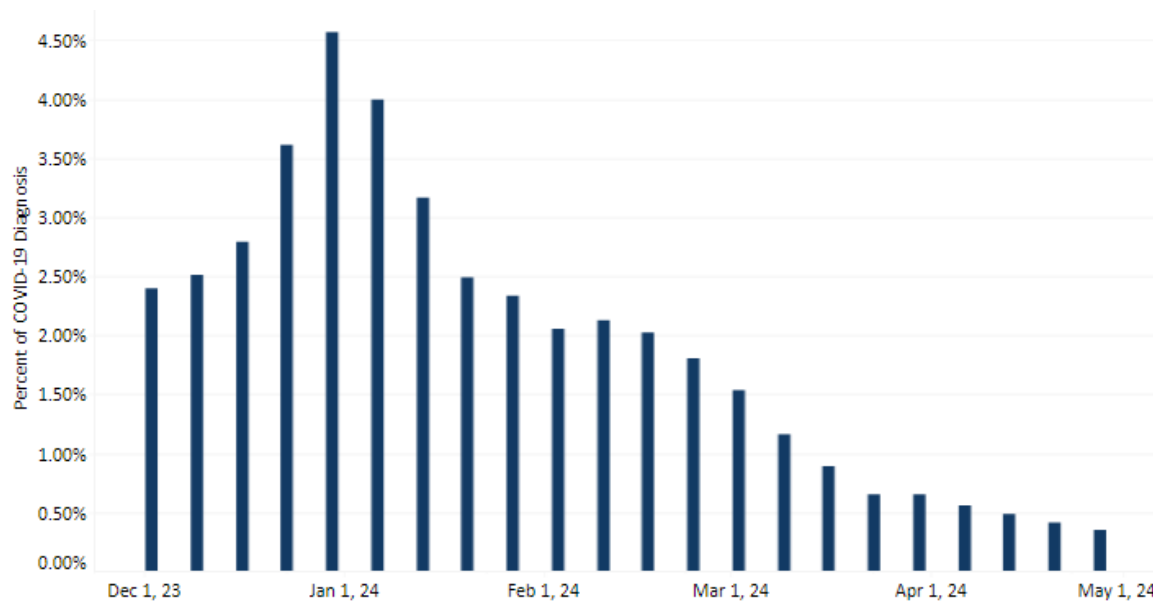
- Combined
- COVID-19
- Influenza
- RSV

Virginia Data: Week ending April 27, MMWR week 17:

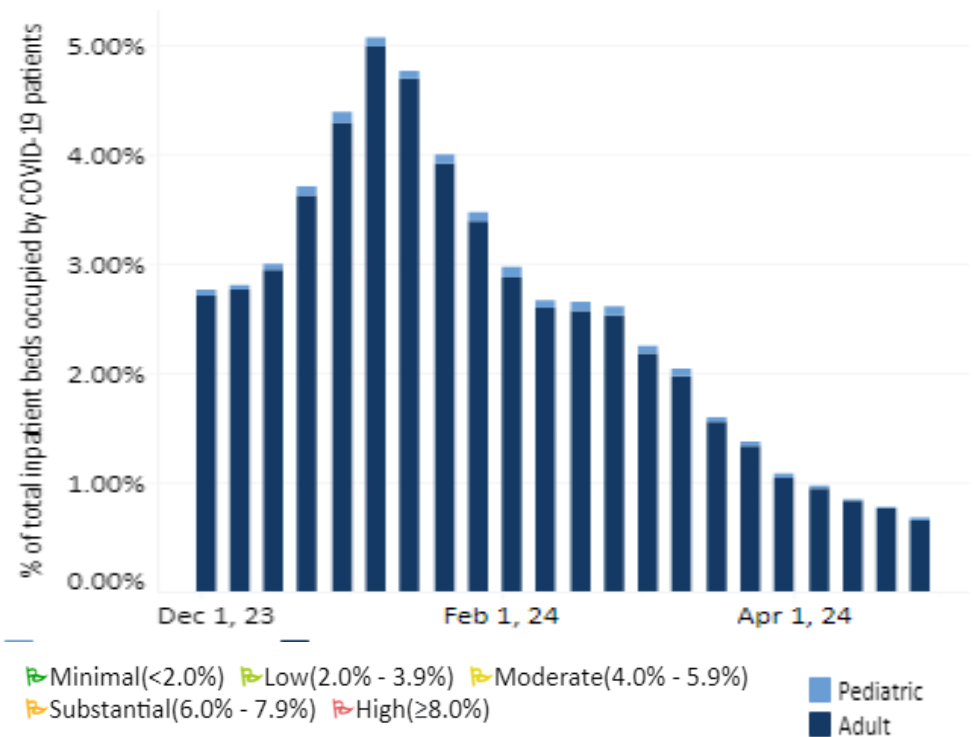
- .35% of ED visits were for diagnosed COVID-19 (**14.6% decrease** from previous week)
- .69% of inpatient beds in use for COVID-19 (**10.4% decrease** from previous week)
- 1.66 Hospital Admissions per 100,000 population (**38.7% decrease** from previous week)

% Beds Occupied by Patients with COVID-19 is **Minimal** ↗

Weekly Percent of Emergency Department Visits for Diagnosed COVID-19 in Virginia, November 2023 – April 2024



COVID-19 Hospital Beds in Use for COVID-19 Virginia, November 2023 – April 2024



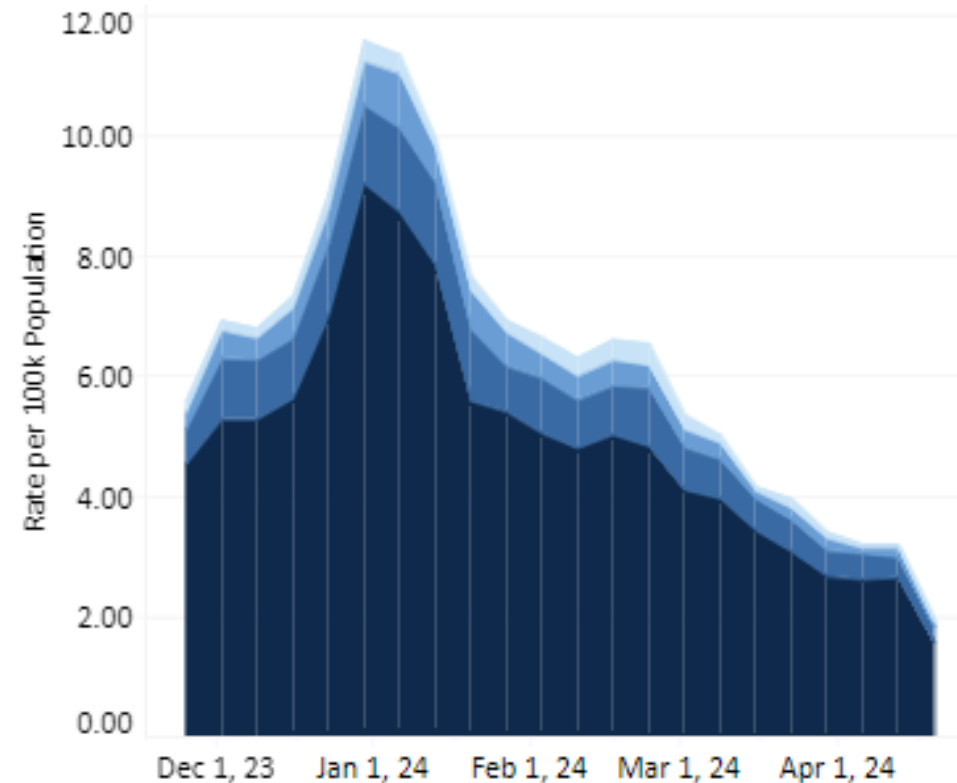
↗ Minimal (<2.0%) ↗ Low (2.0% - 3.9%) ↗ Moderate (4.0% - 5.9%) ↗ Substantial (6.0% - 7.9%) ↗ High (≥8.0%)
 ■ Pediatric ■ Adult

Centers for Medicare & Medicaid Services (CMS) COVID-19 hospital reporting requirements expired April 30, 2024. Data may be incomplete after this date.

*Source: [CDC COVID Data Tracker](#), [VDH COVID-19 Dashboard](#)
 VDH Weekly Respiratory Disease Surveillance Report. Percentage change is calculated off updated case numbers from week prior.
 *Data comparisons: Wednesday-Wednesday

Virginia's COVID-19 Hospital Admissions for the week ending April 27, 2024:

- **1.66** Hospital Admissions per 100,000 population (**decreased 38.7%** from previous week)



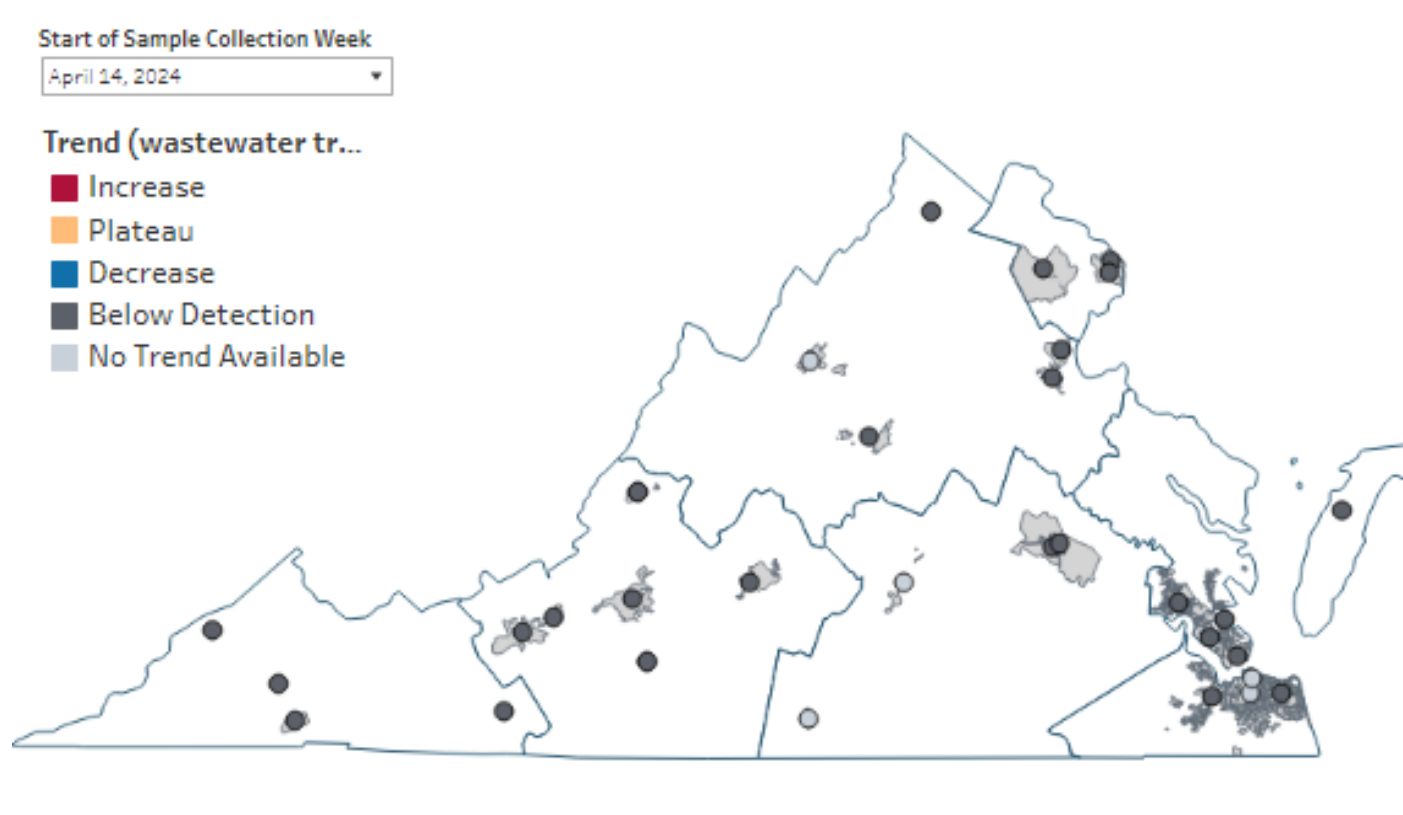
New COVID-19 Hospital Admissions are **Low** 🟢

Centers for Medicare & Medicaid Services (CMS) COVID-19 hospital reporting requirements expired April 30, 2024. Data may be incomplete after this date.

▢ 0-19 Years ▢ 40-59 Years
▢ 20-39 Years ▢ 60+ Years
🟢 Low(<10.0) 🟡 Medium(10.0 - 19.9) 🔴 High(≥20.0)

COVID-19 Wastewater Surveillance –

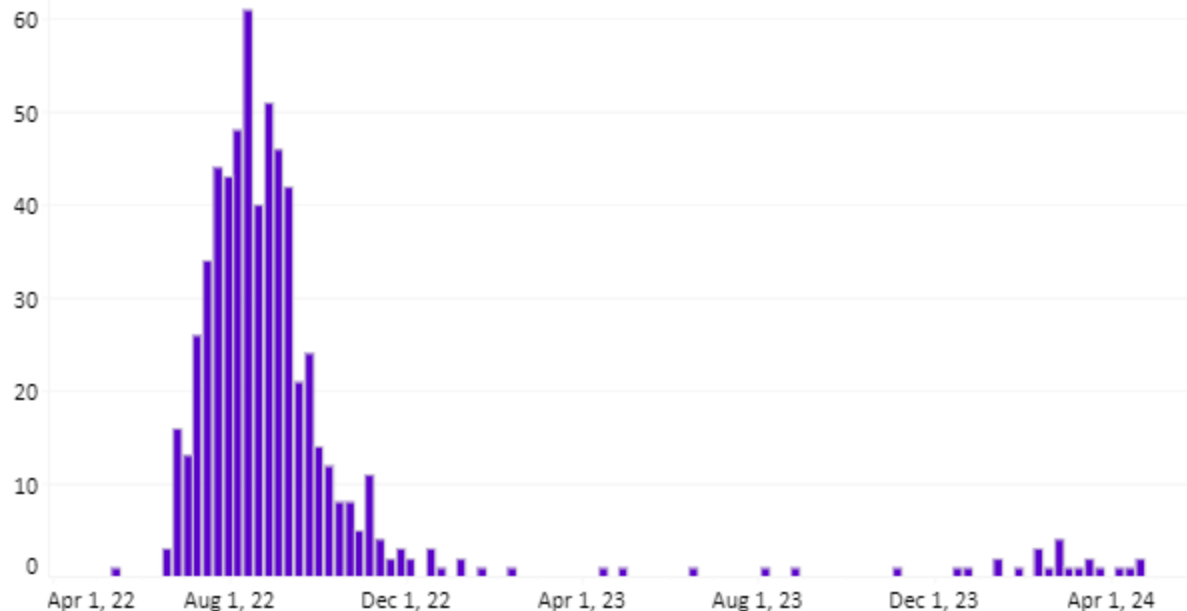
Week ending April 20, 2024:



- This map of Virginia shows the locations and overall viral load trends of the wastewater collection sites enrolled in the Sentinel Monitoring Program.
- The trend is indicated by the color of the 'dot'. See legend below. Not all sites produce data every week, so there may be gray 'No Trend Available' dots

Source: [VDH Wastewater Dashboard](#)

Mpox Cases in Virginia, Epi Curve (5/2022 – 4/2024)



<https://www.vdh.virginia.gov/monkeypox/data-in-virginia/>

Total Cases	598
Hospitalizations	35
Deaths	2

Mpox Cases By Age and Sex (as of 4/30/2024)

Age Group	Cases
0-9 Years	0 (0.0%)
10-14 Years	1 (0.2%)
15-19 Years	16 (2.7%)
20-29 Years	213 (35.6%)
30-39 Years	240 (40.1%)
40-49 Years	89 (14.9%)
50-59 Years	33 (5.5%)
60-69 Years	4 (0.7%)
70+ Years	2 (0.3%)
Sex	
Female	34 (5.7%)
Male	564 (94.3%)

*Data represent investigations with notifications submitted in VEDSS.