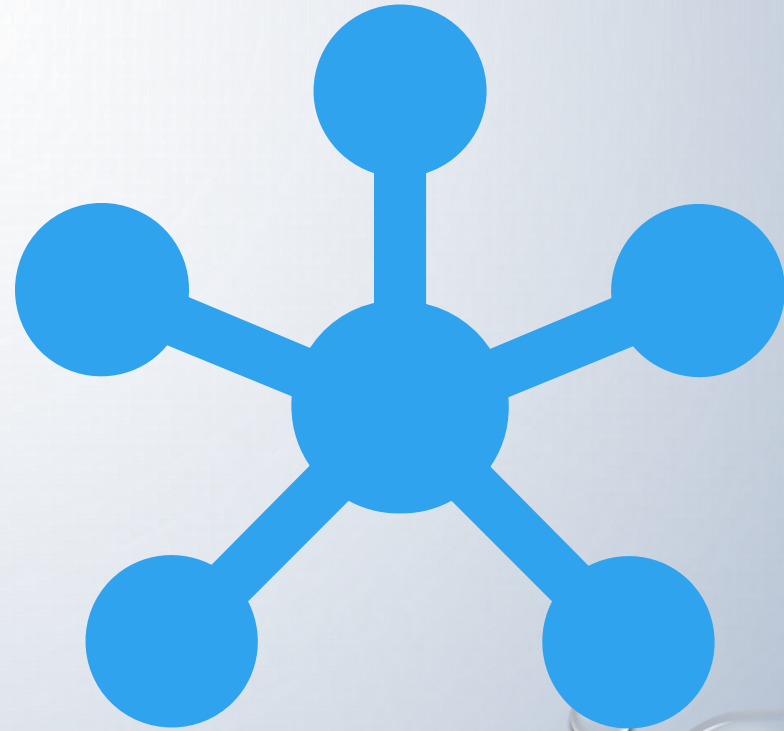


DIGITAL BUSINESS TRANSFORMATION

SURESH SOUNDARARAJAN - CIO



OBJECTIVES



Improved Citizen
Services, Experience
and Engagement



Integration,
Interoperability and
Collaboration



Reshaping processes
and business models



Greater agility



Cost, Efficiency and
Sustainability



CI Pipeline and Embed
Data and Security in
the CI cycle

DRIVING FORCES



Increase capabilities
and address capacity



Scalability Limitations



Missing Connections



Data as a gateway



Velocity shift



Data Centric Eco
Systems Vs Application
Centric Data



ACTIVITIES

- DIGITAL ACCESSIBILITY
- ELECTRONIC HEALTH RECORD – PUBLIC HEALTH FOCUS
- LEVERAGING AND EXPANDING HIE FOR POPULATION HEALTH
- DATA MODERNIZATION INITIATIVE (RATIONALIZATION, ENTERPRISE DATA PORTAL...)
- LEAN, AGILE, SECURE ARCHITECTURE AND API INTEGRATIONS FOR BETTER SERVICE DELIVERY
- LEVERAGING AI, PROCESS AUTOMATIONS, VIRTUAL AGENTS...
- MASTER PATIENT – IDENTIFICATION AND INTEGRATION

PUBLIC HEALTH AND AI



Disease Surveillance and
Analyzing factors to
prevent spread



Analyzing Unstructured
data



Forecasting trends using
heterogenous data
sources (Overdose)



Outbreak data and
identifying sources



Record Linkage and
Master Person Index

CURRENT AI/ML PROJECTS

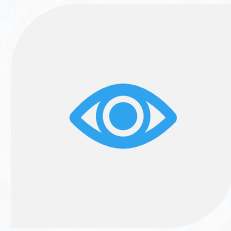
Project	Method	Phase	Notes
Predicting MENA Populations	Support Vector Machine (SVM)	Complete	William and Mary led project that developed a machine-learning classification algorithm will be developed to detect linguistic and ethnic naming patterns based on textual characteristics of full name sequences using a long short-term memory machine learning model
Vital Statistics Annual Report	Conversational AI/Analytics and Natural Language Processing (NLP)	Code Testing /Feasibility and Cost Analysis	Utilizing Gemini to query Vital Statistics reports. Also provides AI generated insights
Missing Variable in Vital Record prediction	SVM/Naïve Bayes	Code Testing /needs assessment	Used to predict missing fields such as ICD-10, Gender, etc. based on known variables
Data Quality	K-Nearest Neighbors (KNN) Isolation Forest	Code Testing /needs assessment	Working with Sudarshan on looking at ways to handle missing data and outliers
MPI	Expectation Maximization (EM)	Implemented	
MPI	Cosine Similarity, SVM, Naïve Bayes, KNN,	Contemplation	Review of other linkage methods to improve match quality
Public Health Modeling	Recurrent Neural Network (RNN), Long Short -Term Memory (LSTMs)	Contemplation/needs assessment	Model disease spread based on epidemiological data



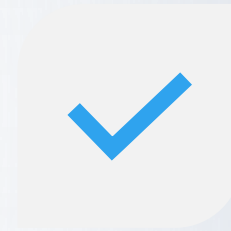
DIGITAL INVESTMENT TRENDS AND PRIORITIES

- CYBERSECURITY POSTURE
- APPLICATION RATIONALIZATION AND MODERNIZATION
- MOVING TO AND LEVERAGING CLOUD PLATFORMS
- BUSINESS INTELLIGENCE
- TOTAL EXPERIENCE SOLUTIONS
- OMNICHANNEL STRATEGIES
- DIGITAL ACCESSIBILITY
- RECORDS DIGITIZATION AND MANAGEMENT

OPPORTUNITIES AND CHALLENGES



ENSURING SHARED
VISION



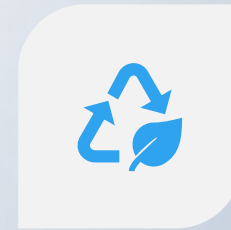
COMPETING
PRIORITIES AND
EXPECTATIONS



UNDERSTANDING
OF THE
POSSIBILITIES



ORGANIZATIONAL
CHANGE
MANAGEMENT



SUSTAINABILITY

STEPS



Strategic Goals –
Alignment



Consumable
transformation
strategy



Attainable targets



KPI's to measure
progress



Sustainability plan
and **responsibility**



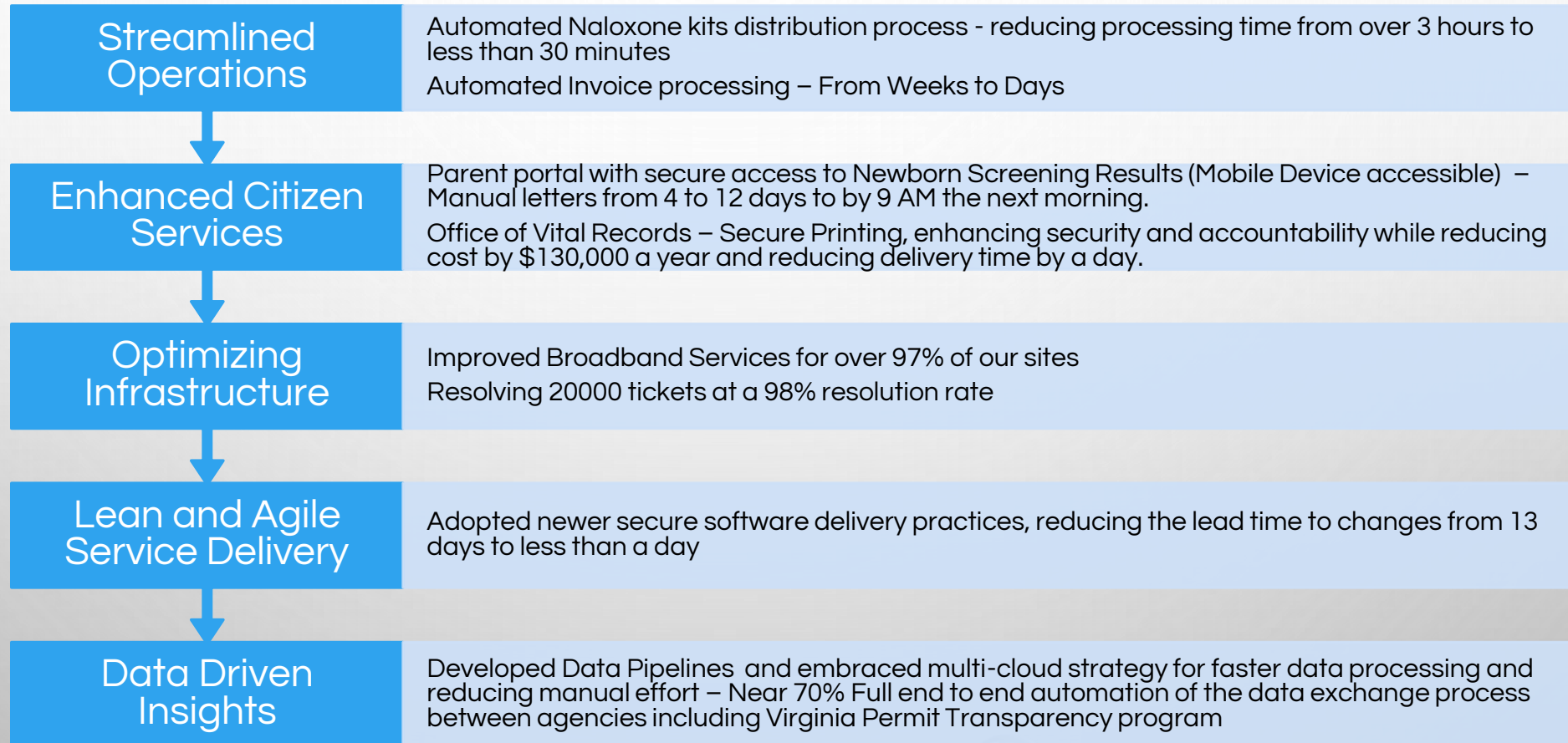
PROOF OF
CONCEPT



Lighthouse Projects,
Pipeline and
Sequencing




SOME KEY ACHIEVEMENTS



2025 FOCUS



Further
Automation of
Admin Services



Policy and
Process,
streamlining the
work we do to
better support
our customer



Citizen-Centric
Focus: Ensuring
all products meet
emerging needs

