

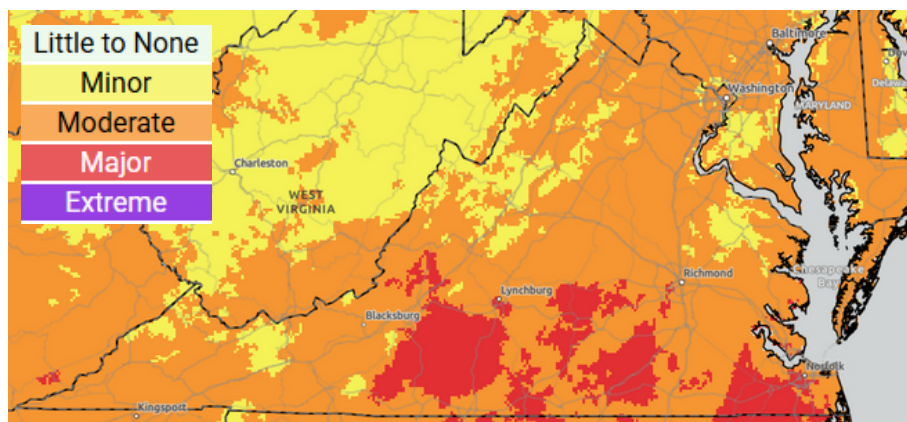
July 18, 2025

## Key Takeaways

- 21 new measles cases were reported nationally last week. Canada reported 120 new cases last week, and Mexico reported 182.
- Slow moving storms created locally heavy rain and flash flooding across the Northeast, including multiple events in Virginia over the past eight days.
- More rain is expected over the weekend and localized heavy rain and flooding events are possible.
- Early signs of a late summer COVID-19 wave are beginning to crop up, but activity remains very low.

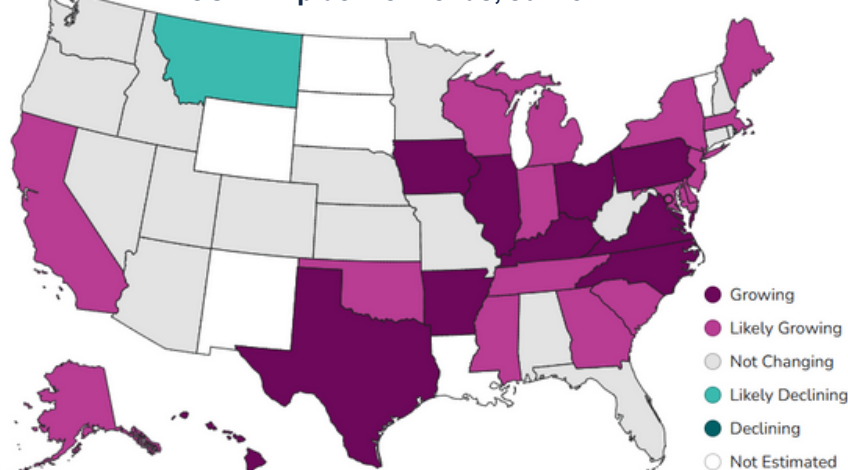
## Key Figures

NWS HeatRisk, Sun Jul 20.



Moderate or major heat risk will affect much of the Virginia through the weekend. After a slight reprieve early next week, above normal temperatures are expected late next week. Image source: [NWS](#)

COVID Epidemic Trends, Jul 15



Though still very low, the CDC estimates that COVID-19 is growing or likely growing in 27 states. In Virginia, the epidemic trend is growing. COVID accounts for just 0.5% of ED visits, but positive lab reports are up from late Jun lows. Image Source: [CDC](#)

## Measles

**1,309**

Measles cases reported in 2025 across 40 US states as of Jul 15.

## Extreme Heat

**288**

Heat-Related Illness ED and UC visits in Virginia for the 7-day period ending Jul 17.

## Wildfires

**566**

The number of wildfires in Canada as of Jul 17. 372 of which are out of control.

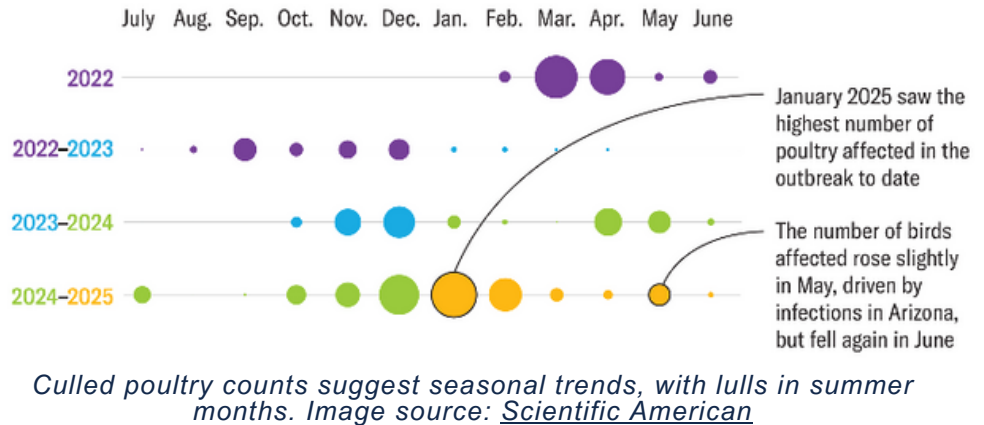
## Spotlight: Severe Weather

[Subscribe to receive this update in your inbox weekly.](#)

## Ongoing Monitored Situations

- **Total measles cases in 2025 surpassed 1,300 this week.** Measles has impacted 40 US states thus far.
- **Canada (3,822 cases) and Mexico (3,124 cases) are suffering larger outbreaks in 2025 than the US.** Two Canadian provinces Ontario (2,278 cases) and Alberta (1,376 cases,) along with Chihuahua state in Mexico (2,922 cases) have more cases than the US total. Cases are likely underreported in all three countries.

### Seasonal Trends in Poultry Affected by Bird Flu



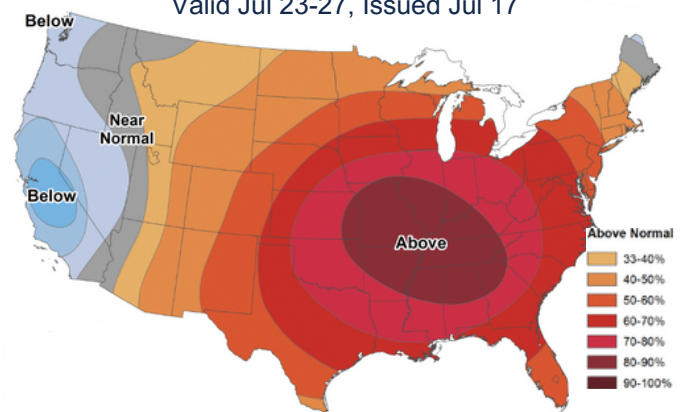
- **Despite the lull in human and animal HPAI (A)H5N1 cases, experts urge caution.** Detections in wild birds and poultry typically decline in the summer due to higher temperatures and the end of migratory bird season. Detections have historically picked up in the fall. Meanwhile, human cases and cattle detections may be due to a lack of testing in reluctant or vulnerable populations.
- **The WHO reported new human cases of HPAI A(H5N1) in Bangladesh and India.** The Bangladesh case, associated with backyard poultry, recovered. The India case died and source information was not reported.

## Other News

- **Ten people died and 30 were injured in a MA assisted-living facility fire.** There were about 70 residents in the 100 unit facility. Five firefighters were injured. State officials are working to rehouse the residents.
- **Construction is set to begin on Norfolk's floodwall.** The project involves home elevations, pump stations and surge barriers in addition to the 9-mile seawall. The project is scheduled for completion in 2037.
- **The US Defense Dept will stop sharing some satellite weather data with NOAA.** The data is used to track and forecast hurricanes, among other uses. It is particularly useful for identifying rapid intensification. Although other systems provide similar data, the loss will result in coverage gaps.

### 6-10 Day Temperature Outlook

Valid Jul 23-27, Issued Jul 17



*Temperatures are likely to be above average across the Southeast next week, with heat extending into the following week. Image source: [NWS CPC](#)*

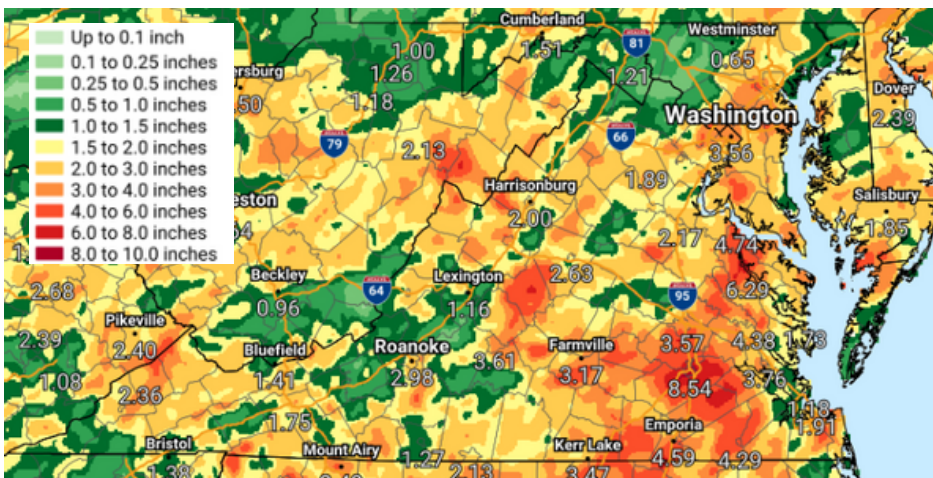
- **The CDC declared an egg-linked salmonella outbreak over.** Overall 134 infections were reported in 10 states. 38 were hospitalized, with one death. A large outbreak linked to backyard poultry is ongoing.

## Spotlight

## Flooding and waterways.

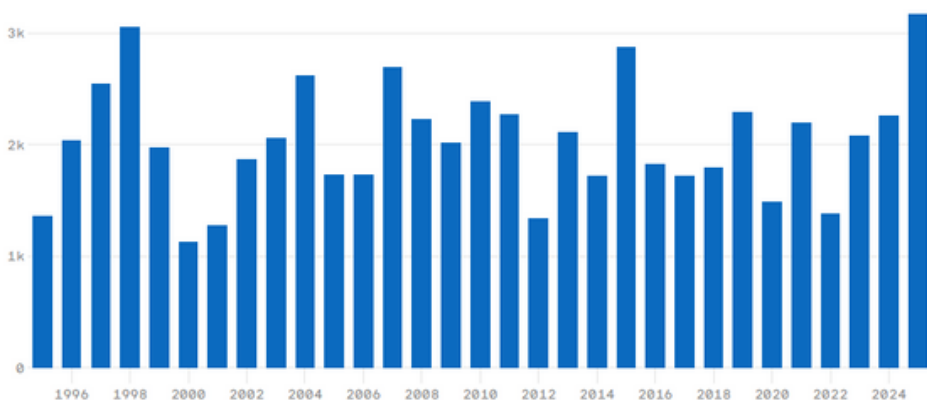
- **Two NJ residents died in flash flooding across the Mid-Atlantic and Northeast US on Monday.** New Jersey declared a state of emergency. In NYC's subway system, built to handle 1.75 inches of rain per hour, platforms flooded leaving some passengers stranded. More than 2 inches per hour fell in Central Park, which saw a record daily total of 2.64 inches.
- **In Virginia flash flooding continued into this week** following flood events on Wed and Sat last week. Petersburg declared a state of emergency, as severe flooding damaged roads. Several people were rescued and an apartment complex evacuated. Delayed dredging and other infrastructure upgrades may have contributed to the flooding.
- **Buchanan and Botetourt Counties are piloting advanced flood emergency warning systems.** The systems use sensors, rain gauges and predictive modeling to alert local officials of potential or imminent flooding down to the neighborhood and street level.

Total Precipitation, 7 days ending at 8AM, Jul 16



Virginia experienced multiple rounds of storms and heavy rain over the past several days. Petersburg experienced local totals above 8½ inches. Portions of the Middle Peninsula received over 6 inches. Parts of Northern Virginia received over 4 inches.  
Image Sources: [NWS](#)

NWS Flash Flood Warnings through Jul 16



The National Weather Service has issued a record number of flash flood warnings through July 16 than in any year over the same period. The 3,160 warnings so far beat the previous record set in 1998. In Metro Richmond, this has translated into 68 flash flood warnings. Image Sources: [Axios](#)

- **Multiple sewage releases impacted Virginia waterways this week.** A power outage at Hopewell's wastewater plant caused 1.38 million gallons of sewage to spill into the James river and local waterways. Upstream, an estimated 1.9 billion gallons of combined storm runoff and wastewater have flowed into the James this year through Richmond's combined overflow system including some over the past week. Meanwhile, a lightning strike at the Tappahannock wastewater plant caused 725,000 gallons of partially treated wastewater to flow into the Rappahannock river and local waterways.