

The Pathway to Targeted Violence

Virginia State Police
Behavioral Threat Assessment & Management Team

U//For Official Use Only

Objectives

- *The path individuals take when moving toward committing an act of targeted violence*
- *How Behavioral Threat Assessment & Management (BTAM) teams use this knowledge*

U//For Official Use Only

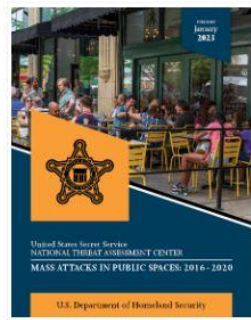
Targeted Violence



Violence that is predatory, premeditated, planned, predictive and directed at a specific individual, group, location, or institution.

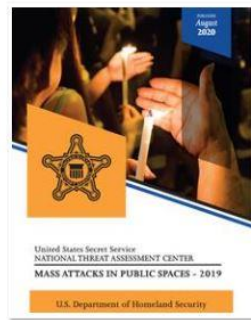
Targeted violence is not impulsive or reactive.

Mass Attacks



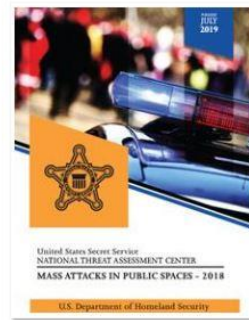
JAN 2023

Mass Attacks in Public
Spaces: 2016-2020



AUG 2020

Mass Attacks in Public
Spaces - 2019



JUL 2019

Mass Attacks in Public
Spaces - 2018

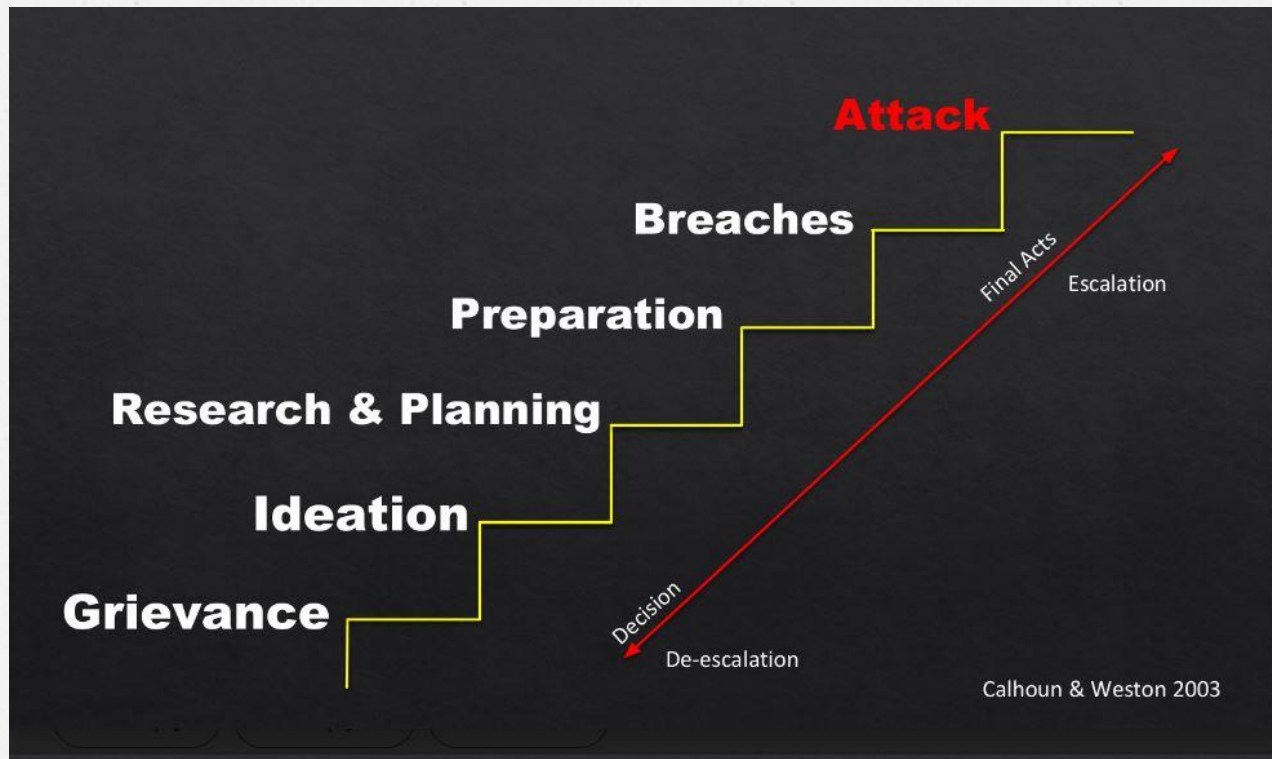


MAR 2018

Mass Attacks in Public
Spaces - 2017

U//For Official Use Only

The Pathway to Targeted Violence



U//For Official Use Only

The Beginning

Grievance / Injustice



Real or Perceived

- o Personal
- o Political
- o Religious
- o Racial / Ethnic
- o Environmental

* Usually a combination of several

- Grievance Shopping
- Adopted Grievance

Ideation / "Cause"



Obsessive Thoughts

- o Violence is acceptable
- o Radicalization
- o All Consuming
- o The desire has formed

Steadily Escalating...

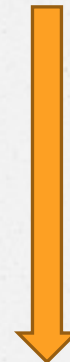
Research / Planning



Intent has formed

- o Who?
 - o What?
 - o Where?
 - o When?
 - o How?
- *Past attacks**

Preparation



Psychologically Ready

- o End of Life
- o Gathering items & developing skills
- o Manifesto
- o Change in habits
- o Happy
- o Rehearse

Almost...

Breach / Probing



- o Can I get in?*
- o Approach behaviors*

Attack



Missed our chance

Case Study



U//For Official Use Only

Marjory Stoneman Douglas High School



Nikolas Cruz

02/14/2018

U//For Official Use Only

Cruz's Path



U//For Official Use Only

Cruz Getting Close



U//For Official Use Only

Cruz Getting Closer



U//For Official Use Only

Cruz's Attack



U//For Official Use Only

History Lesson



1998

U//For Official Use Only



Virginia is #1

2008



The Commonwealth legislates the creation of threat assessment teams in all higher education institutions receiving state funds.

2013



Virginia expands this mandate to all K-12 public schools.

2023

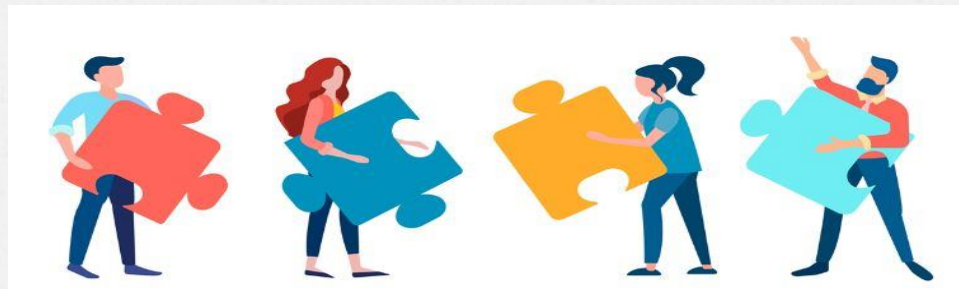


Required in schools in 18 states

U//For Official Use Only

Behavioral Threat Assessment & Management (BTAM)

- o Systematic
- o Proactive
- o Fact-based
- o Multidisciplinary Team
- o Identify – Investigate – Assess – Manage
- o Focuses on BEHAVIOR



U//For Official Use Only

Where do we fit in?



U//For Official Use Only

Summary

- o The pathway to targeted violence has different and distinct stages.
- o BTAM strives to PREVENT acts of targeted violence.
- o It is possible to intervene prior to an attack.