

The background of the slide features a light blue, semi-transparent overlay of a budget spreadsheet. The spreadsheet contains various numerical values, some in currency format (e.g., \$12,603.00). A silver pen is positioned diagonally across the lower-left portion of the spreadsheet. On the right side, a white calculator is partially visible, showing buttons for '+/-', 'CE', 'ON', 'C', and '0'.

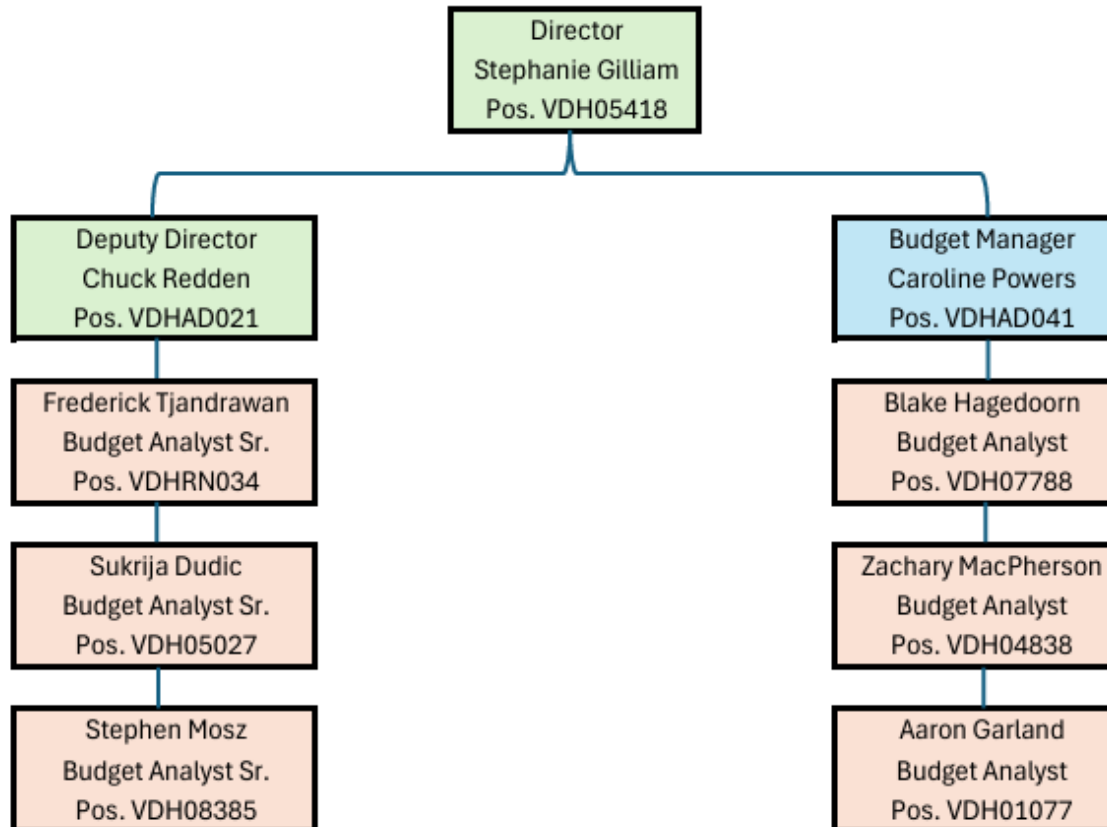
Office of Budget

Stephanie Gilliam
Budget Director

Office of Budget

Office of Budget Organizational Chart

As of 03.10.26



<https://vdhweb.vdh.virginia.gov/budget/>

**Virginia Department of Health
Office of Budget
Budget Assignments**

Blake Hagedoorn	
Budget Analyst	
blake.hagedoorn@vdh.virginia.gov	
Cost Code	District
19	New River
21	Chesterfield
22	Crater
24	Henrico
26	Richmond
29	Eastern Shore

Zach MacPherson	
Budget Analyst	
zachary.macpherson@vdh.virginia.gov	
Cost Code	District
11	Prince William
13	Central Virginia
15	Pitts/Danville
27	Southside
25	Piedmont

Aaron Garland	
Budget Analyst	
aaron.garland@vdh.virginia.gov	
Cost Code	District
6	Alexandria
12	Alleghany
20	Roanoke
35	Western Tidewater
39	Portsmouth

Frederick Tjandrawan	
Sr. Budget Analyst	
frederick.tjandrawan@vdh.virginia.gov	
Cost Code	District
1	Central Shenandoah
5	Blue Ridge
33	Three Rivers
32	Norfolk
36	Virginia Beach

Stephen Mosz	
Sr. Budget Analyst	
stephen.mosz@vdh.virginia.gov	
Cost Code	District
2	Lord Fairfax
3	Rappahannock
4	Rappahannock Rapidan
14	Cumberland Plateau
17	Lenowisco
28	Chesapeake

Sukrija Dudic	
Sr. Budget Analyst	
sukrija.dudic@vdh.virginia.gov	
Cost Code	District
16	West Piedmont
18	Mount Rogers
23	Chickahominy
34	Peninsula
30	Hampton

Central Office Assignments

Financial Management
Grants Administration
Purchasing & General Services
Human Resources
Budget

Commissioner
Internal Audit
Communications
Environmental Health Services

Radiological Health
Office of CHS
Health Equity & Scholarships
Emergency Preparedness

Medical Examiner
Epidemiology
Pass Thrus

Drinking Water
Emergency Medical Services
Information Management

Licensure & Certification
Vital Records
Family Health Services



Budget Resources and Training

[Office of Budget](#) → Budget Resources and Training

Budget Process and Creation

- [Virginia and VDH Budget Process Overview](#)
- [Budget Development Training](#)
- [Budget Terminology & Acronyms](#)
- [FY26 Staff Cost Estimator](#)

Budget Workbooks

- [Budget Workbook Orientation](#)
- [Budget Workbook Creation Checklist](#)
- [Budget Workbook Creation FAQs](#)
- [FY26 Budget Workbook Template for Central Offices](#)
- [FY26 Budget Workbook Template for Local Health Districts – Updated to include Revenue by FIPS tab](#)

Budget Reports

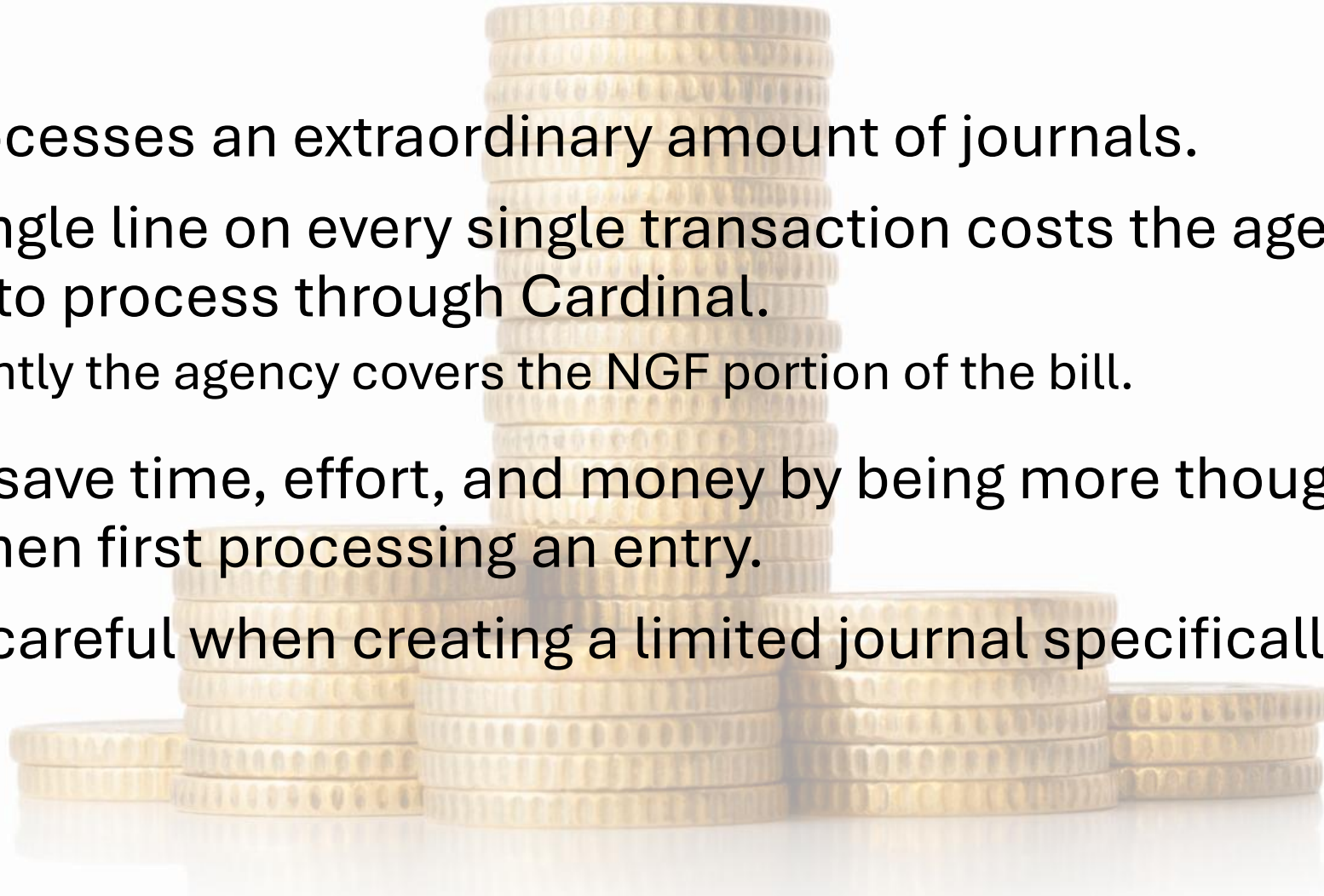
- [How to Build a Report \(Query Builder\)](#)
- [How to Run a Position Fund Sources Report](#)
- [How to Run Active Staff Member Reports](#)

General Fund Allocation Files

- ▶ [Meet the Team](#)
- ▶ [Budget Resources and Training](#)
- ▶ [Calendar](#)
- ▶ [News and Information](#)
- ▶ [Forms and Documents](#)
- ▶ [Resources](#)
- ▶ [Office of Budget Org Chart](#)
- ▶ [Monthly Reports and Budget SharePoint](#)

Process Vouchers with Care

- VDH processes an extraordinary amount of journals.
- Every single line on every single transaction costs the agency over a dollar to process through Cardinal.
 - Presently the agency covers the NGF portion of the bill.
- We can save time, effort, and money by being more thoughtful up front, when first processing an entry.
- Be very careful when creating a limited journal specifically.



		Non			Journal
Department		Journal	Journal	Grand Total	Percent
110010	CENTRAL SHENANDOAH DIST	2,299	1,671	3,970	42%
110020	LORD FAIRFAX DISTRICT	4,124	5,079	9,203	55%
110030	RAPPAHANNOCK AREA DIST	2,295	2,882	5,177	56%
110040	RAPP.-RAPIDAN DISTRICT	1,891	6,412	8,303	77%
110050	BLUE RIDGE HEALTH DISTRICT	1,814	2,068	3,882	53%
120060	ALEXANDRIA DISTRICT	622	1,677	2,299	73%
120110	PRINCE WILLIAM DISTRICT	1,026	1,363	2,389	57%
130120	ALLEGHANY DISTRICT	1,547	3,270	4,817	68%
130130	CENTRAL VIRGINIA DISTRICT	4,495	5,067	9,562	53%
130140	CUMBERLAND PLATEAU DIST	1,313	4,889	6,202	79%
130150	DANVILLE DISTRICT	902	1,420	2,322	61%
130160	WEST PIEDMONT DISTRICT	852	2,076	2,928	71%
130170	LENOWISCO DISTRICT	1,333	4,962	6,295	79%
130180	MOUNT ROGERS DISTRICT	3,630	4,562	8,192	56%
130190	NEW RIVER DISTRICT	1,382	1,428	2,810	51%
130200	ROANOKE CITY DISTRICT	1,056	3,188	4,244	75%
140210	CHESTERFIELD DISTRICT	774	1,357	2,131	64%
140220	CRATER DISTRICT	2,275	4,499	6,774	66%
140230	CHICKAHOMINY DISTRICT	990	1,293	2,283	57%
140240	HENRICO DISTRICT	1,446	1,103	2,549	43%
140250	PIEDMONT DISTRICT	1,100	1,305	2,405	54%
140260	RICHMOND CITY DISTRICT	1,082	1,528	2,610	59%
140270	SOUTHSIDE DISTRICT	710	1,150	1,860	62%
150280	CHESAPEAKE DISTRICT	987	1,522	2,509	61%
150290	EASTERN SHORE DISTRICT	1,245	1,957	3,202	61%
150300	HAMPTON DISTRICT	750	1,038	1,788	58%
150320	NORFOLK DISTRICT	1,341	1,971	3,312	60%
150330	THREE RIVERS DISTRICT	2,190	1,686	3,876	43%
150340	PENINSULA DISTRICT	1,741	2,281	4,022	57%
150350	WESTERN TIDEWATER DIST	2,434	1,059	3,493	30%
150360	VIRGINIA BEACH DISTRICT	2,870	2,253	5,123	44%
150390	PORTSMOUTH DISTRICT	566	903	1,469	61%
Total		53,082	78,919	132,001	60%

		Non			Journal
Department		Journal	Journal	Grand Total	Percent
165320	OFFICE OF COMMUNITY HEALTH SERVICES	718	263	981	27%
205010	COMMISSIONERS OFFICE	1,070	394	1,464	27%
205020	FINANCIAL MANAGEMENT	351	268	619	43%
205030	OFFICE OF HUMAN RESOURCE	195	251	446	56%
205040	PURC. & GENERAL SERVICES	570	137	707	19%
205090	GRANTS ADMINISTRATION	44	35	79	44%
205120	INTERNAL AUDIT	46	113	159	71%
205230	CENTER FOR PUBLIC HEALTH INFORMATICS	151	52	203	26%
205270	OFFICE OF BUDGET	10	17	27	63%
205540	HEALTH STATISTICS	60	13	73	18%
205550	OFFICE OF VITAL RECORDS	351	332	683	49%
209010	OIM	712	472	1,184	40%
209030	ISO	31	10	41	24%
301020	ENVIRONMENTAL HEALTH SERV	1,044	599	1,643	36%
301030	OFFICE OF DRINKING WATER	1,119	1,047	2,166	48%
305170	EMERGENCY MED. SERVICES	779	327	1,106	30%
305800	MED.EX.-NORTHERN REGION	3,410	1,985	5,395	37%
306170	DIVISION OF INFORMATICS AND INFORMATION SYSTEMS	242	333	575	58%
306190	EMERGENCY PREPAREDNESS AND RESPONSE	296	115	411	28%
306310	OFFICE OF RADIOLOGICAL HEALTH	316	209	525	40%
405200	OFFICE OF HEALTH EQUITY	1,233	240	1,473	16%
406020	CHS VACCINES PURCHASED BY EPID	7,775	4,678	12,453	38%
407000	FAMILY HEALTH SERVICES	7,401	2,763	10,164	27%
505250	OFFICE OF COMMUNICATIONS	126	104	230	45%
505600	LICENSURE AND CERTIFICATION	8,005	1,012	9,017	11%
Total		36,055	15,769	51,824	30%
Grand Total		89,383	95,015	184,398	52%

		Non			Journal
Department		Journal	Journal	Grand Total	Percent
110010	CENTRAL SHENANDOAH DIST	2,299	7,112	9,411	76%
110020	LORD FAIRFAX DISTRICT	4,124	11,936	16,060	74%
110030	RAPPAHANNOCK AREA DIST	2,295	16,719	19,014	88%
110040	RAPP.-RAPIDAN DISTRICT	1,891	15,425	17,316	89%
110050	BLUE RIDGE HEALTH DISTRICT	1,814	14,850	16,664	89%
120060	ALEXANDRIA DISTRICT	622	8,051	8,673	93%
120110	PRINCE WILLIAM DISTRICT	1,026	7,693	8,719	88%
130120	ALLEGHANY DISTRICT	1,547	9,893	11,440	86%
130130	CENTRAL VIRGINIA DISTRICT	4,495	11,030	15,525	71%
130140	CUMBERLAND PLATEAU DIST	1,313	15,849	17,162	92%
130150	DANVILLE DISTRICT	902	8,708	9,610	91%
130160	WEST PIEDMONT DISTRICT	852	11,097	11,949	93%
130170	LENOWISCO DISTRICT	1,333	15,942	17,275	92%
130180	MOUNT ROGERS DISTRICT	3,630	26,402	30,032	88%
130190	NEW RIVER DISTRICT	1,382	14,534	15,916	91%
130200	ROANOKE CITY DISTRICT	1,056	8,718	9,774	89%
140210	CHESTERFIELD DISTRICT	774	8,609	9,383	92%
140220	CRATER DISTRICT	2,275	12,567	14,842	85%
140230	CHICKAHOMINY DISTRICT	990	9,599	10,589	91%
140240	HENRICO DISTRICT	1,446	8,208	9,654	85%
140250	PIEDMONT DISTRICT	1,100	9,778	10,878	90%
140260	RICHMOND CITY DISTRICT	1,082	8,762	9,844	89%
140270	SOUTHSIDE DISTRICT	710	7,739	8,449	92%
150280	CHESAPEAKE DISTRICT	987	7,687	8,674	89%
150290	EASTERN SHORE DISTRICT	1,245	11,101	12,346	90%
150300	HAMPTON DISTRICT	750	5,657	6,407	88%
150320	NORFOLK DISTRICT	1,341	8,616	9,957	87%
150330	THREE RIVERS DISTRICT	2,190	12,219	14,409	85%
150340	PENINSULA DISTRICT	1,741	7,707	9,448	82%
150350	WESTERN TIDEWATER DIST	2,434	10,046	12,480	80%
150360	VIRGINIA BEACH DISTRICT	2,870	8,952	11,822	76%
150390	PORTSMOUTH DISTRICT	566	6,170	6,736	92%
Total		53,082	347,376	400,458	87%

		Non			Journal
Department		Journal	Journal	Grand Total	Percent
165320	OFFICE OF COMMUNITY HEALTH SERVICES	732	2,620	3,352	78%
205010	COMMISSIONERS OFFICE	1,070	2,586	3,656	71%
205020	FINANCIAL MANAGEMENT	351	1,598	1,949	82%
205030	OFFICE OF HUMAN RESOURCE	195	2,356	2,551	92%
205040	PURC. & GENERAL SERVICES	570	1,281	1,851	69%
205090	GRANTS ADMINISTRATION	44	472	516	91%
205120	INTERNAL AUDIT	46	793	839	95%
205230	CENTER FOR PUBLIC HEALTH INFORMATICS	151	207	358	58%
205270	OFFICE OF BUDGET	10	491	501	98%
205540	HEALTH STATISTICS	60	166	226	73%
205550	OFFICE OF VITAL RECORDS	351	1,122	1,473	76%
209010	OIM	712	3,417	4,129	83%
209030	ISO	31	189	220	86%
301020	ENVIRONMENTAL HEALTH SERV	1,044	4,392	5,436	81%
301030	OFFICE OF DRINKING WATER	1,119	6,619	7,738	86%
305170	EMERGENCY MED. SERVICES	779	3,091	3,870	80%
305800	MED.EX.-NORTHERN REGION	3,410	6,132	9,542	64%
306170	DIVISION OF INFORMATICS AND INFORMATION SYSTEMS	242	2,267	2,509	90%
306190	EMERGENCY PREPAREDNESS AND RESPONSE	296	2,885	3,181	91%
306310	OFFICE OF RADIOLOGICAL HEALTH	316	2,721	3,037	90%
405200	OFFICE OF HEALTH EQUITY	1,233	2,342	3,575	66%
406020	CHS VACCINES PURCHASED BY EPID	7,775	23,159	30,934	75%
407000	FAMILY HEALTH SERVICES	7,401	24,585	31,986	77%
505250	OFFICE OF COMMUNICATIONS	126	1,530	1,656	92%
505600	LICENSURE AND CERTIFICATION	8,005	4,300	12,305	35%
Total		36,069	101,321	137,390	74%
Grand Total		89,383	449,490	538,873	83%