



SERVICES GUIDE

*Buchanan, Dickenson, Lee, Russell, Scott, Tazewell,
and Wise Counties and the City of Norton*

VDH VIRGINIA
DEPARTMENT
OF HEALTH

**CUMBERLAND PLATEAU &
LENOWISCO HEALTH DISTRICTS**

Updated: July 2025



Front Cover Photo: View from Birch Knob Tower, Clintwood, VA- Dickenson County
Photographer: Brad Deel



Overlook, Breaks Interstate Park, Breaks, VA- Dickenson County

TABLE CONTENT

- Welcome Message
- Meet The Leadership Team
- About
- Mission & Vision
- What We Do
- Programs & Services
- Office Directory

WELCOME MESSAGE



Reisa Sloce

*District Director,
Cumberland Plateau & LENOWISCO*

Welcome! We're glad you chose to learn more about the Virginia Department of Health's Cumberland Plateau and LENOWISCO Health Districts. This service guide contains a wealth of information about our available programs and services and we encourage you to take advantage of the many and various programs available through your local health departments. We are proud to have such a diverse availability of services our community members can benefit from!

Traditional public health concerns such as disease outbreaks, environmental hazards, maternity and child health, WIC, family planning, immunizations, and access to health care have been joined by modern concerns: bioterrorism, crime, violence, and substance abuse. Each of these issues poses a threat to public health and wellness, and each calls for short and long-term solutions that lie well outside the traditional public health boundaries.

Our health department works in partnership with the community to ensure the absolute best health and well-being for all people. We recognize that residents are more than mere consumers of public health services. Our health departments actively involve our residents in the planning, evaluation, and implementation of health activities, services, and programs in their communities. To do this we have local health departments in each locality we serve- Buchanan, Dickenson, Lee, Russell, Scott, Tazewell, and Wise/Norton; that enable our staff to work with residents on issues of mutual concern.

In addition, we are committed to collaborating with a variety of medical service providers, county governments, city agencies, community-based organizations/service providers, public/private schools, civic groups, faith-based organizations, and families to address the broad range of health and safety issues impacting individuals and populations in our home communities.

Only when we are all working together as a community will we be able to realize our mission: To protect the health and promote the wellbeing of all people in Virginia.

A handwritten signature in black ink that reads "Reisa L. Sloce".

Reisa L. Sloce, BS, VCA

*District Director,
Cumberland Plateau & LENOWISCO Health Districts*

MEET THE LEADERSHIP TEAM

Reisa Sloce

District Director
Cumberland Plateau & LENOWISCO

Michelle McPheron

Nurse Manager, Senior
Cumberland Plateau & LENOWISCO

Jason Barton

Business Manager C
Cumberland Plateau & LENOWISCO

Cynthia Jesse

Nurse Supervisor
LENOWISCO

Daniel Hunsucker

Population Health Coordinator
Cumberland Plateau & LENOWISCO

Karen Crutchfield

Human Resources
Cumberland Plateau & LENOWISCO

Brad Stallard

Environmental Health Manager, Senior
LENOWISCO

Sydney Manis

Epidemiologist
LENOWISCO

Karen Baker

WIC Coordinator
LENOWISCO

Darrin Rowe

Emergency Preparedness & Response
LENOWISCO

Linda Stanley

Business Manager A
LENOWISCO, Wise

Angel Parker

Business Manager A
LENOWISCO, Scott & Lee

Angela Ryan

Accountant AP
LENOWISCO

Susan Berg

Accountant AR
Cumberland Plateau & LENOWISCO

Christopher Qualls

Psychologist, Child Development Clinic
LENOWISCO

Amy Adkins

Nurse Supervisor
Cumberland Plateau, Russell & Dickenson

Robin Jackson

Nurse Supervisor
Cumberland Plateau, Tazewell & Buchanan

Julie Powers-Kinser

Executive Secretary
Cumberland Plateau & LENOWISCO

Brian Stanley

Environmental Health Manager, Senior
Cumberland Plateau

Paige Lucas

Epidemiologist
Cumberland Plateau

LeeAnn Brooks

WIC Coordinator
Cumberland Plateau

Delilah McFadden

Emergency Preparedness & Response
Cumberland Plateau

Judy Light

Business Manager A
Cumberland Plateau, Russell & Dickenson

Amanda Davis

Business Manager A
Cumberland Plateau, Tazewell & Buchanan

Connie Counts

Accountant, Senior
Cumberland Plateau

Robin Powers

Accountant AR
Cumberland Plateau



Flag Rock
Norton, VA
Wise County
Photographer: Brad Deel

Opportunities in State Government

JOBS.VIRGINIA.GOV



The White Rocks, Ewing, VA- Lee County

ABOUT VIRGINIA DEPARTMENT OF HEALTH

The Virginia Department of Health (VDH) is dedicated to protecting and promoting the health of Virginians. The VDH is made up of a statewide Central Office in Richmond and 35 local health districts. These entities work together to promote healthy lifestyle choices that can combat chronic disease, educate the public about emergency preparedness and threats to their health, and track disease outbreaks in Virginia. The Local Health Districts allow the state's public health needs to be managed at a community level by individuals knowledgeable about that specific population.



The Cumberland Plateau Health District is one of Virginia's 35 local health districts and serves the communities of Buchanan County, Dickenson County, Russell County, and Tazewell County in far Southwest Virginia. The region borders Kentucky on the west and West Virginia on the north. The Cumberland Plateau Health District serves a population of approximately 98,000 people.

The LENOWISCO Health District is one of Virginia's 35 local health districts and serves the communities of Lee County, Norton City, Scott County, and Wise County in far Southwest Virginia. The region shares borders with Tennessee to the south and Kentucky to the north and west. The LENOWISCO Health District serves a population of approximately 82,000 people.

While the Cumberland Plateau and LENOWISCO Health Districts are considered separate health districts, they are combined under the same leadership team for a more comprehensive regional approach for far Southwest Virginia. Much of our district is closer to at least seven other state capitals than to Virginia's own, Richmond. The health districts serve a combined population totaling approximately 180,000 people.

OUR MISSION & VISION



MISSION

To protect the health and promote the wellbeing of all people in Virginia.



VISION

Become the healthiest state in the nation.



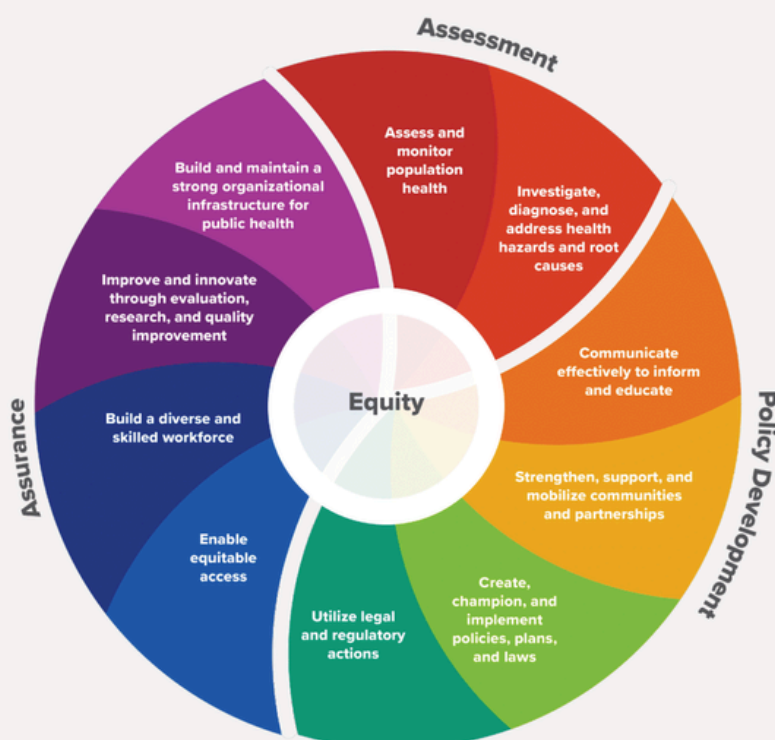
Back of the Dragon, Bluefield, VA- Tazewell County

WHAT WE DO

THE 10 ESSENTIAL PUBLIC HEALTH SERVICES

To protect and promote the health of all people in all communities

The 10 Essential Public Health Services provide a framework for public health to protect and promote the health of all people in all communities. To achieve equity, the Essential Public Health Services actively promote policies, systems, and overall community conditions that enable optimal health for all and seek to remove systemic and structural barriers that have resulted in health inequities. Such barriers include poverty, racism, gender discrimination, ableism, and other forms of oppression. Everyone should have a fair and just opportunity to achieve optimal health and well-being.



ESSENTIAL PUBLIC HEALTH SERVICE #1

Assess and monitor population health status, factors that influence health, and community needs and assets

ESSENTIAL PUBLIC HEALTH SERVICE #2

Investigate, diagnose, and address health problems and hazards affecting the population

ESSENTIAL PUBLIC HEALTH SERVICE #3

Communicate effectively to inform and educate people about health, factors that influence it, and how to improve it

ESSENTIAL PUBLIC HEALTH SERVICE #4

Strengthen, support, and mobilize communities and partnerships to improve health

ESSENTIAL PUBLIC HEALTH SERVICE #5

Create, champion, and implement policies, plans, and laws that impact health

ESSENTIAL PUBLIC HEALTH SERVICE #6

Utilize legal and regulatory actions designed to improve and protect the public's health

ESSENTIAL PUBLIC HEALTH SERVICE #7

Assure an effective system that enables equitable access to the individual services and care needed to be healthy

ESSENTIAL PUBLIC HEALTH SERVICE #8

Build and support a diverse and skilled public health workforce

ESSENTIAL PUBLIC HEALTH SERVICE #9

Improve and innovate public health functions through ongoing evaluation, research, and continuous quality improvement

ESSENTIAL PUBLIC HEALTH SERVICE #10

Build and maintain a strong organizational infrastructure for public health



Jefferson National Forest, Wise & Scott Counties

OUR PROGRAMS & SERVICES

CLINICAL SERVICES

CHILD DEVELOPMENT CLINIC

Providing diagnostic evaluation services for children and youth from birth to 21 years of age with developmental and behavioral disorders. The clinic offers a multidisciplinary team approach for the evaluation of children and youth. Our team consists of the following: Licensed Clinical Psychologist, Educational Consultant, Licensed Clinical Social Worker, Nurse Practitioner, Licensed Practical Nurse and Clerical Staff.

Diagnostic Evaluations:

The Child Development Clinic performs diagnostic evaluations for the following:

- Attention Deficit/Hyperactivity Disorder
- Autism
- Developmental Delays
- Intellectual Disability
- Behavior/Emotional Disorders
- Learning Problems
- Other Disorders or Disabilities

Referrals can be made by schools, physicians, and any other community or professional agencies. For more information, call 276-386-3803 or 276-386-8010.



Every Woman's Life

For Your Breast and Cervical Health

EVERY WOMAN'S LIFE

Every Woman's Life (EWL) is a breast and cervical cancer early detection program providing access to FREE breast and cervical cancer screening and diagnostic services for low income and uninsured women. Early detection of breast and cervical cancer may save lives. Program participants may receive cancer treatment FREE of charge through Medicaid under the Breast and Cervical Cancer Prevention and Treatment Act.

- Screening services (mammogram and/or Pap test) for women ages 40-64.
- Diagnostic services are provided to symptomatic women ages 18-39.

Screening is FREE if you are:

1. A woman 40-64 years of age
2. A resident of Virginia
3. Have no insurance, or your insurance does not cover screening exams (Plan First)
4. Your yearly income falls within the current guidelines.

FAMILY PLANNING SERVICES

The Family Planning Program provides women and men with the resources they need in order to decide if they want to have children; and if so, how many and how far apart they want to space them.

We provide a broad range of acceptable and effective family planning birth control methods and services. This includes natural family planning methods, infertility services and services for teens. You decide which one is best for you.

We provide services to everyone regardless of their race, citizenship status or income status. Social security numbers are not required nor proof of residency in the county or city where the services are provided.

All services are confidential. No information can be given to another person without the written consent of the person who received the services.

All services are affordable and provided at low or no cost based on your income. Our providers include skilled clinicians, nurses, and support staff. Call your local health department today for more information or to schedule an appointment!

IMMUNIZATIONS & VACCINES

The diseases that vaccines prevent can be dangerous, or even deadly. Vaccines reduce the risk of infection by working with the body's natural defenses to help it safely develop immunity to disease. Routine childhood and adult immunizations are available and given according to Centers for Disease Control's (CDC) Advisory Committee on Immunization Practice (ACIP) recommendations.

Seasonal vaccines for issues such as flu and COVID-19 are also available. Free or reduced cost vaccines for children and adults may be available based on income. Please call your local health department for an appointment.

SEXUALLY TRANSMITTED INFECTIONS

Sexually transmitted diseases (STDs), also known as sexually transmitted infections (STIs) is a term used to describe over 20 different types of infections that include chlamydia, gonorrhea, syphilis, HIV, trichomoniasis, hepatitis B and human papillomavirus (HPV). STDs are also known by the term "venereal disease."

We offer confidential testing *and* treatment for sexually transmitted infections. For more information about testing, treatment and charges, please call your local county health department- some services are available for free.

HIV/AIDS

HIV stands for human immunodeficiency virus. It is the virus that can lead to acquired immunodeficiency syndrome, or AIDS. Unlike some other viruses, the human body cannot get rid of the HIV virus. That means that once you have HIV, you have it for life. Confidential testing and counseling are offered. The health department offers counseling and testing for those who are at risk or might have been exposed to someone with HIV. Linkage to treatment options is available.

TUBERCULOSIS (TB)

Tuberculosis (TB) is caused by bacteria which usually attack the lungs, but it can attack any part of the body such as the kidney, spine, and brain. Not everyone infected with TB bacteria becomes sick. If not treated properly, TB disease can be fatal. Tuberculosis risk assessment screening and PPD placement and reading are available upon request for a fee. Services are FREE for those that have come in contact with a person infected with TB. Medication assistance is available to those who qualify.

Pharmacy Access Program

The Pharmacy Access Program is a program designed to assist qualifying patients in getting FREE or low-cost prescription drugs through participating Pharmaceutical Companies. This is a FREE service for people of all ages who meet the qualifications and do not have any type of prescription drug coverage and are having problems purchasing their medications on their own.

Emergency assistance cannot be provided; each application for the individual medication may take as long as 4-6 weeks (possibly longer) for delivery. For this reason, patients are asked to reapply for medications at least 4-6 weeks ahead of time to ensure that their medications are received before they run out.

This program requires proof of income; no application can be completed without this information.

The following documents are acceptable:

- Tax Form (required if you file along with a recent proof of income)
- W-2 Withholding forms
- Pay stubble for last month's wages
- Documentation of workman's compensation
- Written verification of wage from employer
- Court verification of child support or alimony
- Latest leave and earnings statement for military personnel
- Social Security, SSI, Black Lung, or survivor's benefits (Copy of check, award letter, or copy of bank statement if income is direct deposit)
- Letter of support from a friend or relative supplying you with food or shelter
- Copy of ADC/Food Stamp Award Letter if this is your only means of support

*****Not all medications are available through the Pharmacy Access Program. Controlled substances (those in Schedule II-V) will not be requisitioned through the Pharmacy Access Program operated by local health departments.**

For more information call the Pharmacy Connection Program directly at 800-744-7370 (in Virginia) or you may reach a coordinator at the Wise County Health Department at 276-328-8000.

WOMEN, INFANTS, & CHILDREN'S NUTRITION (WIC)

WIC stands for Women, Infants and Children — and it's a program to help pregnant women, mothers, infants and young children stay healthy and eat right during times of important growth.

- Educates pregnant women and new moms about nutrition, with personalized assessments, counseling and support
- Provides pregnant women, new moms, infants and children (up to age 5) with nutritious supplemental foods
- Brings women the support they need to breastfeed their babies
- Offers referrals to additional social services and healthcare resources

You are eligible to apply to Virginia WIC if you...

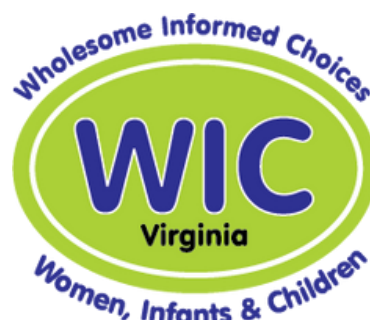
- Are pregnant, breastfeeding, just had a baby or you are a mother, father, grandparent, foster parent, or other legal guardian of a child under the age of 5.
- Are a resident of Virginia.
- Have a nutritional need (this is determined at your local WIC clinic).
- Your income is within the current program guidelines.

BREASTFEEDING PEER COUNSELOR PROGRAM

In 2004, Virginia WIC implemented the Loving Support Through Peer Counseling, Breastfeeding Peer Counselor Program. Loving Support® is funded by the United States Department of Agriculture, Food and Nutrition Services and was developed by Best Start, Inc. This program aims to enhance the continuity of WIC's breastfeeding promotion efforts by offering mother-to-mother breastfeeding support. Breastfeeding moms are eligible to receive a larger food package for a longer duration from WIC—ask for details at your appointment.

Receive Breastfeeding Support:

- Enroll in the Virginia WIC Program
- Attend your scheduled WIC appointment
- Request to meet with a Breastfeeding Peer Counselor





The Littz Mansion, Tazewell, VA- Tazewell County

OUR PROGRAMS & SERVICES

SCHOOL-BASED PROGRAMS & HEALTH SERVICES

PROJECT AIM PROGRAM

A program for students in 7th grade that helps students identify their goals for school and career and make strong choices now for a healthy future. One important outcome of the program is delaying sex as the best and healthiest choice. The program uses the evidence-based curriculum that focuses on school and career planning. Adult Identity Mentoring (Project AIM).



DENTAL HEALTH

Program with a dental hygienist and dental assistant that provides dental cleanings, fluoride varnish treatments, dental sealants, and oral health education for students in elementary and middle schools. Free dental services are provided to eligible student based on each school's free lunch eligibility status. ****Neither Cumberland Plateau nor LENOWISCO have a dentist on staff that is able to provide dental services; cleanings and sealants are available through a dental hygienist in a school-based program.**



Little Stony Falls, Dungannon, VA- Scott County

OUR PROGRAMS & SERVICES

ENVIRONMENTAL & EPIDEMIOLOGY HEALTH SERVICES

EPIDEMIOLOGY

Public Health Epidemiologists monitor the health and illness of a population, investigate the factors that affect the community's health, and recommend interventions to reduce the risk of disease.

OUTBREAK INVESTIGATION

Public Health Nurses and Environmental Health Specialists teams, along with Epidemiologists, evaluate clusters of illness, such as those related to food, water-borne agents, and environmental causes including mosquito-borne illnesses such as ZIKA virus disease. Appropriate interventions and/or mitigation is advised or implemented based on health department recommendations.

ENVIRONMENTAL HEALTH HAZARDS

We provide expert advice on insect, rodent, and similar problems. We investigate environmental complaints, assess the public health impact, and work to avoid or minimize human health risks. Public health nurses and environmental health teams work together to address dog bite investigations for rabies concerns.

ON-SITE SEWAGE HANDLING AND DISPOSAL

All onsite sewage disposal systems require permitting by the Virginia Department of Health. Our environmental health specialists(EHS) are certified as Onsite Soil Evaluators(OSE) through the Department of Professional and Occupational Regulation. EHS can conduct site/soil evaluations to determine the suitability for an onsite sewage disposal system. If a site is found for a conventional septic tank/drainfield system, EHS can issue a permit and subsequently inspect the installation of that system. Also, under this program, sewage handlers (septic tank pumpers) must be permitted and inspected.

ALTERNATE DISCHARGING SEWAGE TREATMENT

If no conventional onsite sewage disposal option can be found for a property, there may be an option for installing an alternative discharging sewage treatment system. The health department issues permits for single family homes discharging less than 1000 gallons/day jointly with the Virginia Department of Environmental Quality. VDH EHS review the designs, issues a permit based on an approved design, and, post-installation, conduct annual inspections of each discharging system. Owners of these systems are required to have them maintained and monitored by a licensed service provider.

PRIVATE WELLS

The VDH permits all wells with the exception of monitoring wells. As part of the permitting process, VDH or a private company OSE locate the well site/area to assure proper setbacks from potential contaminant sources (drainfields, barns, graveyards, etc.) and determine the minimum construction requirements that must be used. Inspections are conducted during construction and/or after construction to assure the well was sited and constructed properly. Drinking water wells must be tested for bacterial contamination before the well can approved as a drinking water supply. Permits are also required to abandon a well. Abandonment must be conducted by a licensed well driller and be witnessed by EHS or private practice OSE.

LEAD RISK ASSESSMENTS

The health districts maintain a certified lead risk assessor on staff to conduct environmental lead investigations when indicated as a part of a work-up of a child with an elevated blood lead level. Elevated lead levels, untreated, can cause neurological and developmental abnormalities in children. The investigation consists of taking and reviewing a thorough medical history to identify possible sources of exposure, and based on this may include sampling paint, dust, soil, and water from the environment in which the child lives, and interviewing families regarding behavior and activities to determine the most likely source(s) of exposure.

FOOD ESTABLISHMENT INSPECTIONS

Inspection and permitting of local restaurants and food trucks. Results of all restaurant inspections can be found online: <https://inspections.myhealthdepartment.com/virginia>

HOTEL PERMITTING AND INSPECTIONS

Hotels are inspected and permitted under the authority of the Rules and Regulations Governing Hotels. Plan reviews are required prior to permit issuance for new or remodeled facilities. Inspections focus on general cleanliness, building upkeep, pool facilities, and insect and rodent control.

CAMPGROUND PERMITTING AND INSPECTIONS

Campgrounds are inspected and permitted under the authority of the Rules and Regulations Governing Campgrounds. Plans reviews are required prior to permit issuance for new or expanded facilities. Inspections focus on water supply, sewage disposal, and service building upkeep.

SUMMER CAMP PERMITTING AND INSPECTIONS

Summer camps are permitted to and inspected under the authority of the Rules and Regulations Governing Summer Camps. Plan reviews are required prior to permit issuance for new or remodeled facilities. Inspections focus on general cleanliness, water supply, sewage disposal, and swimming facilities.

MIGRANT LABOR CAMP PERMITTING AND INSPECTIONS

Migrant Labor Camps are permitted and inspected under the authority of the Rules and Regulations Governing Migrant Labor Camps. Inspections of these facilities focus on water supply, sewage disposal, housing, and garbage pick-up.

JAIL INSPECTIONS

Local jails are inspected annually under the authority of a Memorandum of Understanding with the Department of Corrections (DOC). EHS inspect for general sanitation and facility upkeep. Any findings are shared with the jail staff and the DOC's inspection staff for enforcement.

ServSafe Program



EHS offers training and certification in ServSafe- the highest standard in food safety training and certification, and is recognized by more jurisdictions than any other manager food safety program. ServSafe content is based on input from experts across the industry who determined the knowledge, skills and abilities food safety managers need to know to perform their jobs effectively.



*High Knob Observation Tower, Norton, VA- Wise County
Photographer: Brad Deel*

OUR PROGRAMS & SERVICES

COMPREHENSIVE HARM REDUCTION

INFECTIONS DISEASE SCREENING & VACCINATION

For those at risk, confidential screening and counseling for HIV and Hepatitis B & C is available at no charge. Tuberculosis risk assessment screening and PPD placement and reading is available. If treatment is required for TB, medication assistance is available to those who qualify. There is no charge for these services for contact with someone infected with TB.

PRE-EXPOSURE PROPHYLAXIS (PrEP)

PrEP is a program designed to provide pre-exposure prophylaxis (medication) and education to clients who are at substantial risk for HIV infection. To be eligible for PrEP, an individual must be at least 18 years of age; a Virginia resident; and willing to participate in adherence and follow-up interventions. For more information, contact your local health department.

HEPATITIS C TREATMENT

Local treatment for acute and chronic hepatitis C. Confirmatory labs, low or no-cost medication, and case management is available.

OVERDOSE PREVENTION

Community education, training, and dispensing of naloxone- a life-saving medication that reverses the effects of an opioid-related overdose.

SYRINGE SERVICES

The LENOWISCO Harm Reduction Program is part of a comprehensive public health strategy, that is evidence-based, to prevent the spread of HIV/AIDS, hepatitis C, and other bloodborne pathogens among injection drugs users, their families, and the larger community. Comprehensive Harm Reduction (CHR) for persons who inject drugs includes, but is not limited to, provision of sterile hypodermic needles and syringes and collection of used hypodermic needles and syringes. CHR, also called needle exchange, syringe services, or syringe access, can decrease the spread of HIV and hepatitis in individuals and the community.

Program Goals:

- Reduce incidence of substance-related health and social harms, including transmission of blood-borne pathogens (infections) through substance abuse.
- Provide safe disposal of used needles.
- Raise awareness about the risk of drug overdoses and associated fatalities.
- Promote and facilitate referrals to primary health care, mental health, and substance use treatment services.

Services Available:

- Services are anonymous
- Exchange used syringes for clean ones
- Safer injection supplies
- Wound care supplies
- Safer sex supplies
- Risk reduction counseling
- Peer Support Specialists
- Overdose prevention & Naloxone (Narcan®)
- Testing for hepatitis, HIV, STDs, and TB
- Pre-Exposure Prophylaxis (PrEP) and Non-Occupational Post Exposure Prophylaxis (nPEP)
- Referrals to medical care, insurance enrollment, mental health, alcohol and drug treatment, and medication assisted treatment

*****Currently Only Available in Wise County, Scott County, and Tazewell County.**

PEER SUPPORT SERVICES

Peer support specialists with lived experience provide outreach and support the harm reduction program. They serve as a link for those who are in active addiction to recovery and help to set goals that create positive changes in their lives.

WRAP AROUND SERVICES

Linkages, referrals, and warm hand offs to other needed programs and services. Partnering with key community partners to ensure a comprehensive range of needs are available and accessible.



Clinch River State Park, Castlewood, VA- Russell County

OUR PROGRAMS & SERVICES

COMMUNITY & CASE MANAGEMENT

BABY CARE PROGRAM



Free education and case management services provided by a registered nurse (RN) for high-risk pregnant women and infants up to 2 years of age who are Medicaid eligible.

RESOURCE MOTHERS PROGRAM



A special mentoring program for first time pregnant or parenting teens. Teens will receive education about taking care of themselves and their infants up to one year of age. Teens will benefit from assistance with setting educational goals, accessing healthcare, and planning for the future care of their infant.

LONG-TERM CARE SCREENINGS

For publicly-funded long-term care services, (such as nursing facility, Program of All-Inclusive Care for the Elderly(PACE), and home and community-based waiver services), an individual must be pre-screened and deemed eligible for services. An assessment must be completed before screeners can determine eligibility and service options. We offer preadmissions screenings by a registered nurse and social worker.





Sand Cave, Ewing, VA- Lee County

OUR PROGRAMS & SERVICES

EMERGENCY PREPAREDNESS & RESPONSE

EMERGENCY PREPAREDNESS & RESPONSE

The Emergency Preparedness and Response team's mission is to effectively respond to any emergency impacting public health through preparation, collaboration, education and rapid intervention throughout the health districts. The Emergency Preparedness and Response Programs involve state, regional and local emergency response partners working together to enhance readiness to respond to bioterrorism, infectious disease outbreaks, weather related events, and other public health emergencies. Funding to support these efforts is provided through grants from the U.S. Centers for Disease Control and Prevention, U.S. Health Resources Services Administration and the U.S. Department of Homeland Security.

SOUTHWEST VIRGINIA MEDICAL RESERVE CORPS

The Southwest Virginia Medical Reserve Corps is a cadre of volunteer health care professionals and community members trained to respond and assist with public health crisis and public health activities in the 13 counties and 3 cities that comprise southwestern Virginia. In addition to emergency events, the Unit participates in many community events such as DEA Drug Take Backs, Damascus Trail Days, United Way Virginia Highlands Healthy Child Evaluations, community health fairs, First Aid booths, and wellness events.

Southwest
VIRGINIA





*Burke's Garden, Tazewell, VA- Tazewell County
Photo: Burke's Garden Hostel*

OUR PROGRAMS & SERVICES

POPULATION HEALTH

HEALTH EDUCATION PROGRAMS

Health educators provide information on health and health related issues. They can assess health training needs and plan health education programs. They may specialize according to specific health concerns, illnesses, or work or training setting. Health Educators often:

- Perform health training needs assessments.
- Design and develop health education programs.
- Publish health education materials, information papers, newsletters, and grant proposals.
- Develop health education curriculum.
- Teach health in public and private schools as well as in the community.

MATERNAL AND CHILD HEALTH



Vital services for mothers, women, children and youth through age 22 (including children and youth with special health care needs), and their families. Injury prevention, Safe Sleep, and Child Safety Seat trainings are available. Free new safety seats including infant, convertible, and booster safety seats for older children are provided to families who qualify. Parents must attend a short instructional session to learn the correct placement and use of the safety seat.

LOW INCOME SAFETY SEAT DISTRIBUTION PROGRAM

The Child Passenger Safety Program focuses on promoting proper safety seat restraint use for children until they transition to the vehicle safety belt approximately birth through a height of 4'9", the program focuses on the correct usage of child restraints among parents and caregivers through outreach and education, providing proper installation education and addressing the barriers that limit access to safety devices.

Our program offers FREE child safety seats and booster seats that are available for income eligible children. Parents, foster parents and legal guardians of children who reside in Virginia may apply. Parents must attend a short class to learn the correct placement and use of the car seat or booster seat.

To apply for a free child safety seat or booster seat, contact your local health department. If you have trouble locating a distribution site or have questions regarding eligibility, please call the Virginia Department of Health, Child Passenger Safety Information Line at 1-800-732-8333.

COMMUNITY HEALTH ASSESSMENT

The ultimate goal of a community health assessment is to develop strategies to address the community's health needs and identified issues. The essential ingredients are community engagement and collaborative participation. A community health assessment (CHA) refers to a health assessment that identifies key health needs and issues through systematic, comprehensive data collection and analysis. Community health assessments use such principles as:

- Multisector collaborations that support shared ownership of all phases of community health improvement, including assessment, planning, investment, implementation, and evaluation
- Proactive, broad, and diverse community engagement to improve results
- A definition of community that encompasses both a significant enough area to allow for population-wide interventions and measurable results, and includes a targeted focus to address disparities among subpopulations
- Maximum transparency to improve community engagement and accountability
- Use of evidence-based interventions and encouragement of innovative practices with thorough evaluation
- Evaluation to inform a continuous improvement process
- Use of the highest quality data pooled from, and shared among, diverse public and private sources

NICOTINE & TOBACCO EDUCATION/CESSATION

Partnering with the American Lung Association to offer information, resources, and cessation materials from the Freedom from Smoking program. Additionally, the Virginia Department of Health receives funding from the Tobacco Use Control Program (TUCP) to operate the Quit Now Virginia hotline that provides cessation resources to all Virginia residents ages 13 and older.



COMMUNITY COALITIONS

Community coalitions are comprised of parents, youth, teachers, law enforcement, businesses, religious leaders, local government, health providers and other community activists who are mobilizing at the local level to make their communities safer, healthier and drug-free. Coalition members all work together to promote the health, well-being, learning, and empowerment of everyone in the community. Family and community involvements foster partnerships among schools, family and community groups, and individuals. These partnerships result in sharing and maximizing resources and ideas. And they help children and youth develop healthy behaviors and promote healthy families.

- Infant & Toddler Connection
- Strong Accountable Care Community (STRONG ACC)
- Healthier Communities Coalition of SWVA
- Project LINK
- Lee County Health & Wellness Coalition
- Concerned About Our Community Coalition (CAOC)
- Hospital Preparedness Coalition
- LENOWISCO Suicide Prevention Coalition
- Emergency Preparedness Readiness
- Veterans Homelessness Coalition
- Safe Kids Appalachia
- Russell County Health Coalition
- Dickenson Co. Partners for Prevention
- Live Healthy Scott County Coalition
- Healthy Families SWVA
- STRONG Kids
- Cancer Without Walls
- Appalachian Substance Abuse Coalition (ASAC)
- Continuum of Care (CoC)
- Various Community Advisory Boards

OFFICE DIRECTORY

CUMBERLAND PLATEAU HEALTH DISTRICT



Buchanan County Health Department

1051 Rosebud Road

Grundy, VA 24614

Phone: (276) 935-4591

Fax: (276) 935-4537



Dickenson County Health Department

334 Brush Creek RD

Clintwood, VA 24614

Phone: (276) 926-4979

Fax: (276) 926-4427



Russell County Health Department

133 Highland Drive, Suite A

Lebanon, VA 24228

Phone: (276) 889-7621

Fax: (276) 889-8011



Tazewell County Health Department

253 Chamber Drive

Tazewell, VA 24651

Phone: (276) 988-5585

Fax: (276) 988-3702

OFFICE DIRECTORY

LENOWISCO HEALTH DISTRICT



Lee County Health Department

134 Hill Street

Jonesville, VA 24263

Phone: (276) 346-2011

Fax: (276) 346-0401



Scott County Health Department

190 Beech Street #102

Gate City, VA 24251

Phone: (276) 386-1312

Fax: (276) 386-2116



Wise Co. & Norton Health Department

134 Roberts Avenue SW

Wise, VA 24293

Phone: (276) 328-8000

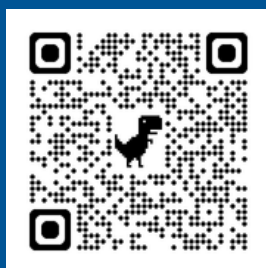
Fax: (276) 376-1020

Back Cover Photo: View from Flag Rock Overlook, City of Norton, VA

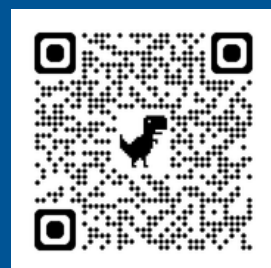


CONNECT WITH US

<https://www.vdh.virginia.gov/>
<https://www.vdh.virginia.gov/cumberland-plateau/>
<https://www.vdh.virginia.gov/lenowisco/>



LENOWISCO
Facebook



Cumberland Plateau
Facebook