



Lord Fairfax
Health District



ANNUAL REPORT 2025

A MESSAGE FROM THE HEALTH DIRECTOR

Dear Community Partners,

It is my pleasure to share highlights from the past year and extend my gratitude for your continued support of the Lord Fairfax Health District. Together, we have advanced our mission *to protect and promote the health of our communities through innovation, collaboration, and resilience.*

In FY25, our teams worked diligently across multiple areas of public health:

Administration: We implemented our Strategic Plan, performance management plan and dashboard. We enhanced our budget management tools and strengthened our records management processes. We were also able to conduct a training audit and ensured 100% completion of required staff training.

Environmental Health: We finalized a district-wide Rabies Response Plan, realigned staff roles to better meet business needs, and improved operations with updated procedures and regular team meetings. We also worked closely to support the opening of a new Grade A milk processing plant.

Medical Services: Our clinical team extended scheduling to better serve clients, strengthened one-on-one staff engagement, and supported clinician learning through initiatives like the new TB Talk series. We held school based back to school immunization clinics with the support of federal funds and our car seat program was reinstituted.

Population Health: A major milestone was the completion of our Community Health Assessment (CHA), which will inform the priorities for our new Community Health Improvement Plan (CHIP). Staff attended 50 outreach events and distributed 286 boxes of naloxone to help prevent opioid overdose deaths. We also hosted our first Safety and Wellness Day and coordinated events for Fentanyl Awareness Day in every locality.

Epidemiology: Our epidemiologists enhanced outbreak response with new tools for secure data collection, finalized a foodborne illness protocol, and collaborated with local and state partners on infection prevention and control. We also launched an innovative H5N1 surveillance system with Blue Ridge Wildlife and mentored a summer intern through the VDH Internship Academy.

Emergency Preparedness & Response: We refreshed our Continuity of Operations Plan, updated four emergency annexes, reinvigorated our Safety Committee and conducted multiple staff-wide safety trainings to include active shooter training, and facilitated our annual Point of Dispensing (POD) exercise. Regional collaboration was strengthened through CHEMPACK planning and joint exercises.

Across all programs, we emphasized staff development, community engagement, and quality improvement, laying a strong foundation for the year ahead. These accomplishments reflect the dedication of our staff and the support of our partners, without whom this work would not be possible.

Looking forward, we are committed to deepening partnerships, expanding outreach, and continuing to strengthen the systems that safeguard community health.

Thank you for your partnership in building healthier, safer communities.

Sincerely,



TABLE OF CONTENTS

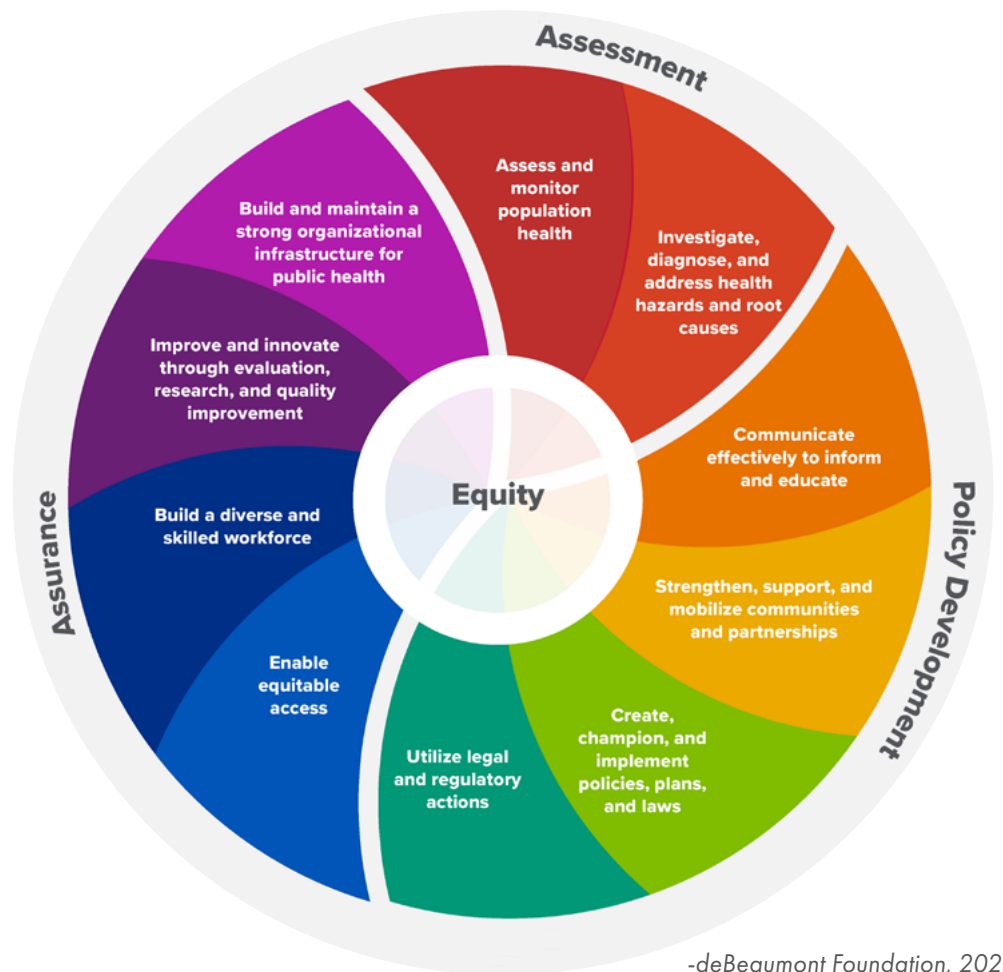
Section	Page
<u>A Message from the Health Director</u>	<u>2</u>
<u>Ten Essential Public Health Services</u>	<u>4</u>
<u>LFHD Service Area</u>	<u>5</u>
<u>Public Health Framework</u>	<u>6</u>
<u>Administration Services</u>	<u>7</u>
<u>Medical Services</u>	<u>9</u>
<u>Emergency Preparedness and Response</u>	<u>13</u>
<u>Environmental Health</u>	<u>17</u>
<u>Epidemiology</u>	<u>21</u>
<u>Population Health</u>	<u>24</u>
<u>Women, Infants & Children Program</u>	<u>27</u>

THE 10 ESSENTIAL PUBLIC HEALTH SERVICES

The work being done every day at Lord Fairfax Health District is represented in the below graphic. Public health covers a large range of topics, and it impacts the everyday life of every citizen of our district.

To protect and promote the health of all people in all communities

The 10 Essential Public Health Services provide a framework for public health to protect and promote the health of all people in all communities. To achieve optimal health for all, the Essential Public Health Services actively promote policies, systems, and services that enable good health and seek to remove obstacles and systemic and structural barriers, such as poverty, racism, gender discrimination, and other forms of oppression, that have resulted in health inequities. Everyone should have a fair and just opportunity to achieve good health and well-being.

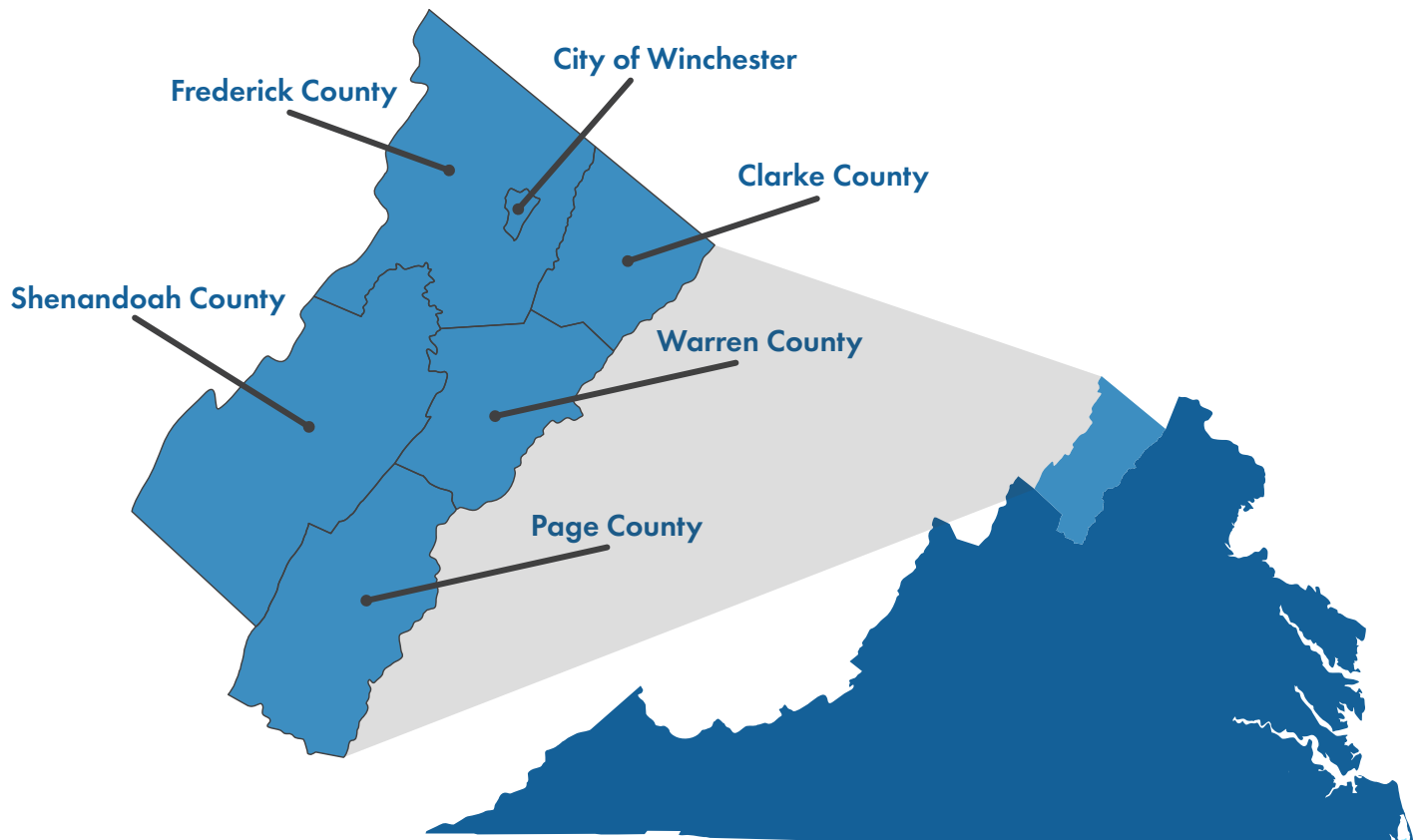


-deBeaumont Foundation, 2022



LORD FAIRFAX HEALTH DISTRICT SERVICE AREA

Lord Fairfax Health District (LFHD) is located in the Shenandoah Valley of Northwest Virginia. LFHD's service area covers Clarke County, Frederick County, Page County, Shenandoah County, Warren County, and the City of Winchester, and serves approximately 245,880 residents.



HEALTH DEPARTMENT OFFICES

Clarke County Health Department

100 N. Buckmarsh Street • Berryville, VA 22611

Phone: (540) 955-1033

Page County Health Department

75 Court Lane • Luray, VA 22835

Phone: (540) 743-6528

Warren County Health Department

465 West 15th Street • Front Royal, VA 22630

Phone: (540) 635-3159

Frederick/Winchester Health Dept.-Environmental Health

107 North Kent Street, Suite 201 • Winchester, VA 22601

Phone: (540) 722-3480

Shenandoah County Health Department

494 North Main Street, Suite 100 • Woodstock, VA 22664

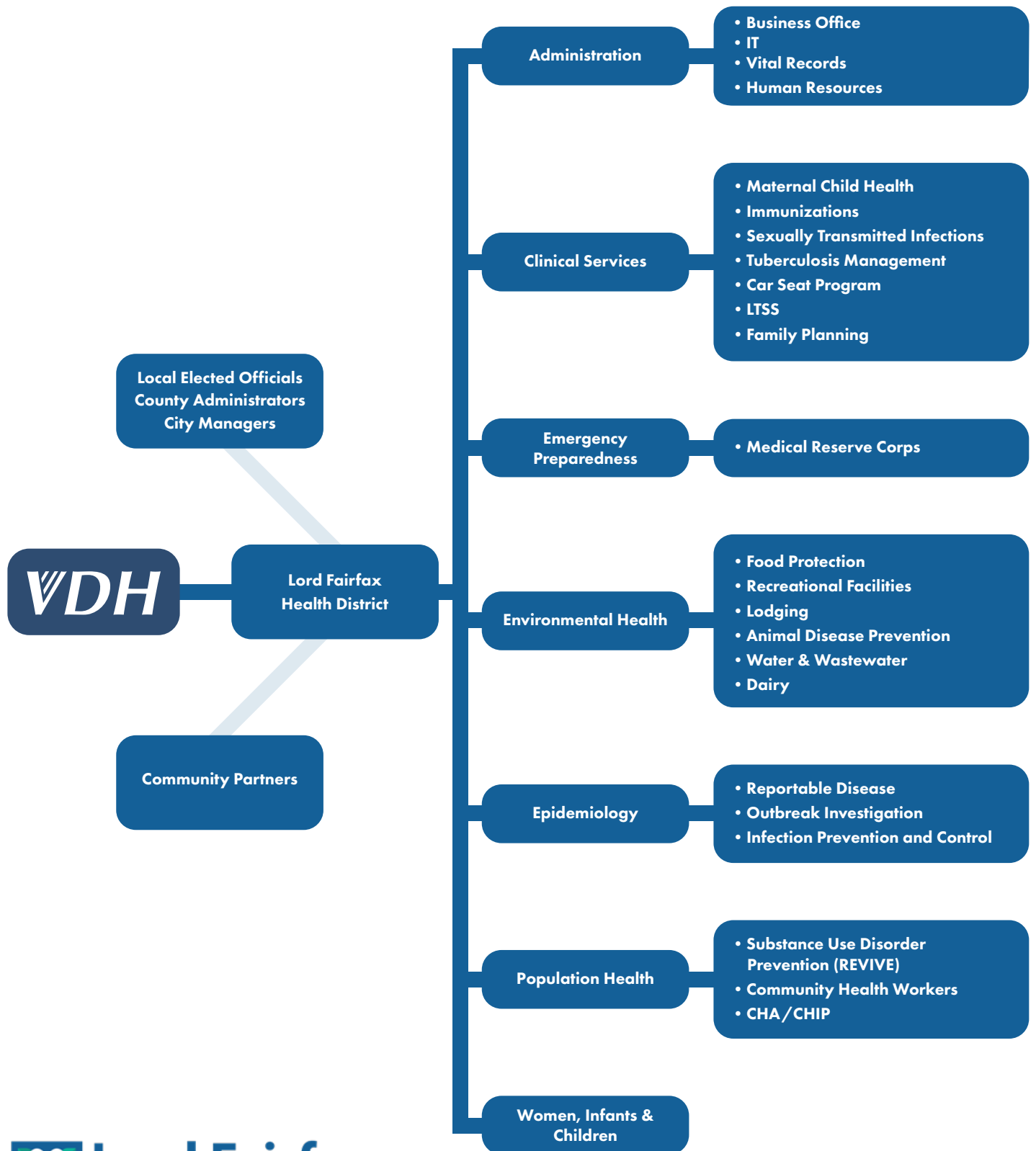
Phone: (540) 459-3733

Frederick/Winchester Health Dept.-Medical

10 Baker Street • Winchester, VA 22601

Phone: (540) 722-3470

PUBLIC HEALTH FRAMEWORK



ADMINISTRATIVE SERVICES

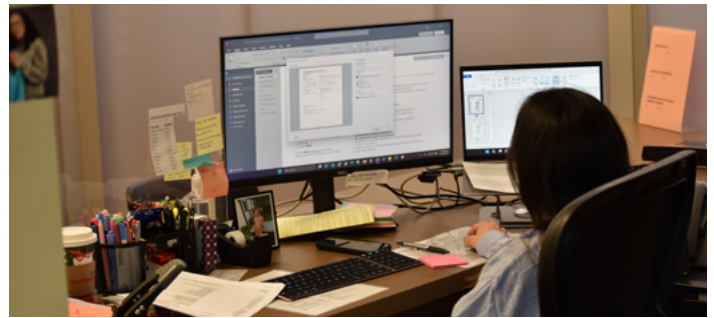
The Administration area of the Lord Fairfax Health District is involved in all services provided by the district. This department encompasses all the financial obligations of the district and includes the following departments: Business Office, Aged Receivables, Accounts Payable, and IT.

The Code of Virginia requires every city and county to have a health department. It is the responsibility of the district to request funding from the locality before they can receive state funds. Each locality has a percentage of funding that is required in order to receive matched funds from the state.

In FY25, we received the following funding from the State of Virginia and the following localities: Clarke, Frederick, Page, Shenandoah, Warren Counties, and the City of Winchester.

FY25 COOPERATIVE BUDGET

Cooperative Resources	Amount
State Share funds	\$3,197,505
Local Match funds	\$2,293,216
Revenue	\$1,710,337
100% Local funds	\$30,267
Total	\$7,231,325



It is also necessary for the local health departments to contribute to the revenue by charging for certain services. These include, but are not limited to, environmental health applications and permits, clinical services which include vaccines, family planning, school physicals, and screening and treatment of sexually transmitted infections. Also, vital records can be obtained from each local health department for birth, death, marriage, and divorce.



The following depicts how much was collected in each county for these revenue streams:

FY25 SELF-GENERATED REVENUE

Jurisdiction	Office Revenue
Clarke County	\$291,603
Frederick County	\$411,591
Page County	\$186,209
Shenandoah County	\$240,301
Warren County	\$348,371
City of Winchester	\$188,492
Total	\$1,666,567



TOTAL EXPENSES FOR LFHD IN FY25

FY25 Expenditures	Amount
Personnel	\$5,309,585
Contractual	\$840,847
Supplies & Maintenance	\$390,589
Continuous Charges	\$405,929
Equipment	\$9,740
Total	\$6,956,690



2025 VITAL RECORDS REQUESTS BY SITE

The vital records department oversees the management of birth certificates, death certificates, marriage certificates, divorce certificates, and death verifications.

FY25 Vital Records Numbers	Clarke County	Frederick County / City of Winchester	Page County	Shenandoah County	Warren County
Birth Certificates	99	987	475	190	208
Death Certificates	8081	8201	1487	2947	5052
Marriage Certificates	8	84	33	15	16
Divorce Certificates	3	12	0	2	5
Death Verification	72	25	4	6	5
Total	8263	9309	1999	3160	5286

MEDICAL SERVICES

LFHD offers medical services in all localities. These services include, but are not limited to, childhood and adult immunizations, TB assessment and treatment, school entry physicals, family planning, Medicaid Waiver Screenings, communicable disease investigation and follow up, sexually transmitted infections testing and treatment, community partner referrals, low-income car seat distribution, and community educational outreaches. Frederick and Winchester clients are served in one physical location and the data provided in this section is based upon the calendar year.

IMMUNIZATIONS

Immunizations reduce illnesses associated with vaccine preventable diseases, which reduces morbidity and mortality. The district offers childhood and adult vaccines as recommended by the Advisory Committee on Immunization Practices (ACIP). These include school required vaccines.

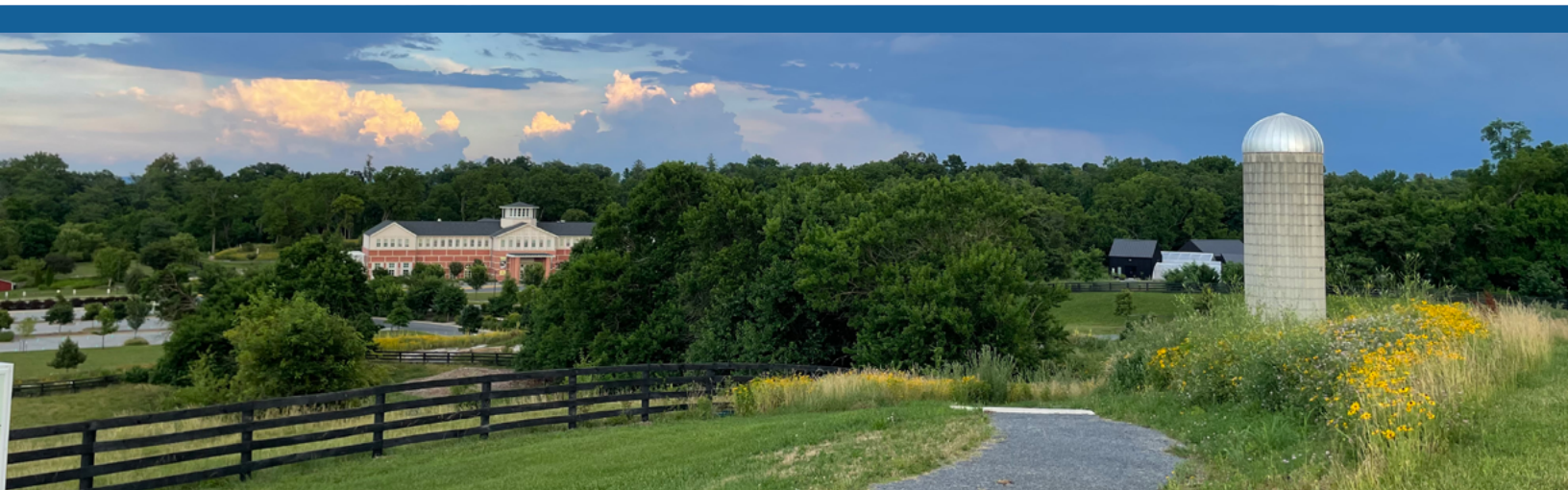
Vaccines administered from Jan 2024 - Dec 2024	
Location	# of Vaccines
Clarke County	894
Frederick County / City of Winchester	2217
Page County	581
Shenandoah County	704
Warren County	886
Total	5282



SEXUALLY TRANSMITTED INFECTIONS

The Sexually Transmitted Infection (STI) Program offers education and counseling, as well as STI testing, and treatment if indicated. This also includes partner referral service for those that may have been exposed to, or are at a high risk of having, an STI. The team offers onsite programs as well as outreach within the community.

488
Total STI
Screenings

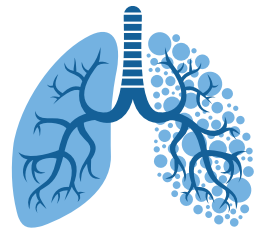


TUBERCULOSIS

The Tuberculosis (TB) Program aims to prevent, control, and eliminate tuberculosis in the community. The program offers confidential TB risk assessment screenings and testing if indicated. The TB team collaborates with the medical providers of individuals diagnosed with active TB (infectious) or latent TB infection (non-infectious) to provide case management, including providing medications. Those individuals with active TB receive Directly Observed Therapy (DOT) where a public health nurse observes the patient take every dose of their TB medication. DOT increases compliance, in effort to help eliminate TB. The team also assists with the identification and testing of contacts for individuals with active TB.

Tuberculosis visits from Jan 2024 - Dec 2024	
Location	# of Visits
Clarke County	128
Frederick County / City of Winchester	746
Page County	197
Shenandoah County	647
Warren County	212
Total	1930

1930
Tuberculosis
Visits



SCHOOL ENTRY PHYSICALS

Physicals are performed for school entry. The Code of Virginia requires all children in elementary school to have a physical exam, prior to starting in a Virginia Public School. The Health Department is a safety net for individuals who may not have identified a primary provider.

193
School Physicals



CAR SEAT PROGRAM

Individuals who meet eligibility requirements can receive a free safety seat and/or a booster seat through the Virginia Department of Health's Low Income Safety Seat Distribution and Education. This program has participants attend a class where they will learn proper installation and correct use of the seats.

82
Car Seats Distributed
in FY25



LONG-TERM SERVICES AND SUPPORTS (LTSS, ALSO CALLED LONG-TERM CARE)

This is a Medicaid funded service providing care in a nursing facility or a community-based setting to individuals whose physical or mental condition requires nursing supervision and assistance with activities of daily living (ADLs). A public health nurse, along with a Department of Social Services (DSS) worker, go into the individual's home to perform an assessment to determine the level of care required and if Medicaid will cover the cost of LTSS. This service is available to individuals of all ages.

LTSS Visits from Jan 2024 - Dec 2024	
Location	# of Visits
Clarke County	42
Frederick County / City of Winchester	321
Page County	101
Shenandoah County	142
Warren County	129
Total	735



MATERNAL CHILD HEALTH (TITLE V)

This program aims to connect pregnant and postpartum women to care. This may include but is not limited to prenatal care, mental health support, WIC, and other community resources.

The Lord Fairfax Health District focused on perinatal mental health as part of the Maternal and Child Health grant during FY2025. Clients received counseling on mental health concerns, along with resource information to connect them with appropriate support services. *A total of 83 tote bags featuring the "Maternal Mental Health Matters" logo were distributed.* Each bag contained a magnetic dry erase board with a marker—items selected as visual reminders that mental health is an essential part of overall health, supporting healthier outcomes for the maternal health population.



83

**Maternal Mental
Health Matters Bags
Distributed**

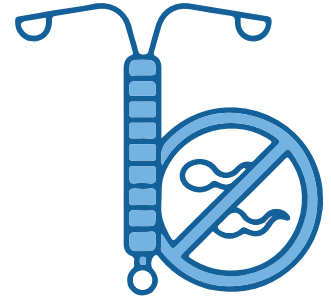
FAMILY PLANNING (TITLE X):

The Title X Family Planning Program is the only federal grant program dedicated solely to providing comprehensive family planning and related preventive health services. Here at VDH our mission is to provide quality reproductive health services, which are on a voluntary basis, in a confidential and caring atmosphere. The Family Planning Program provides individuals (adults and teens) with the knowledge about and access to different methods of birth control to decrease the number of unintended pregnancies.

We offer a variety of contraception options with an emphasis on LARCs (long-acting reversible contraception).

Family Planning Visits from Jan 2024 - Dec 2024	
Location	# of Visits
Clarke County	51
Frederick County / City of Winchester	465
Page County	198
Shenandoah County	118
Warren County	311
Total	1,143

147
Family Planning
Clients Utilize a
Form of LARC



HIGHLIGHTS:

- Majority of LFHD visits are in females age 25-44 with 606 visits, then female age 20-24 with 174 visits, followed by teens age 15-17 with 135.



EMERGENCY PREPAREDNESS AND RESPONSE

The Emergency Preparedness and Response (EP&R) Program strives to strengthen community resilience by building partnerships across all sectors to proactively prepare for, respond to, and recover from any hazards that could negatively affect public health.

HIGHLIGHTS:

- Facilitated the first CHEMPACK Full-Scale Exercise (FSE) within the state. The exercise included partners from other VDH offices and health districts, VA Department of Health (VDH), VA Department of Emergency Management (VDEM), Valley Health, City of Winchester Emergency Communications Center (ECC), Winchester and Frederick County law enforcement, Frederick, Warren and Clarke Counties and Winchester City fire and rescue, Regional Hazmat team, and more.
- Launched the Office Safety Reference Guide, created uniquely for LFHD offices and staff.

LFHD EP&R ACTIVITIES IN FY25

- Provided refresher training for the Continuity of Operations Plan (COOP) as well as an overview of LFHD's EP&R program at the All-Staff Day.
- Co-facilitated a Safety & Wellness Day event in Warren County along with the Population Health Team and MRC Coordinator.
- Public Health Emergency Action Team (PHEAT) deployed a 303 BaseX tent and a 505 BaseX tent as a team.
- An Environmental Health training was provided to Environmental Health Specialists who may be deployed to an emergency shelter for a pre-opening assessment/inspection.
- Panic button testing for the Frederick/Winchester Medical office and Shenandoah County offices completed.
- Point of Dispensing (POD) exercise completed in June.



MEDICAL RESERVE CORPS (MRC)

The Lord Fairfax MRC (LFMRC) unit is a local MRC unit under the Virginia MRC (VA MRC) program that serves the localities of the Lord Fairfax Health District. LFMRC is part of LFHD's Emergency Preparedness & Response (EP&R) program.

The mission of LFMRC is to promote healthy living, protect the environment, prevent disease, and prepare the community for disasters. The Lord Fairfax MRC unit works to improve the overall health of the community through public health outreach and community engagement.



Highlights of LFMRC in FY25 included:

VOLUNTEER RECRUITMENT



EMERGENCY PREPAREDNESS EXERCISE OR TRAINING OPPORTUNITIES



VOLUNTEER EVENTS AND DEPLOYMENTS

(emergency response, daily public health activities, etc.)



Also included:

- Total emergency response events: 4 emergency response events
- 5 unique volunteer emergency response deployments

TOTAL HOURS AND VALUE



VOLUNTEER RETENTION

- Updated, maintained, and distributed volunteer management plan and supplemental volunteer handbook
- Created and published unit-specific volunteer training plan
- Created and distributed quarterly unit newsletter

VOLUNTEER RETENTION

- Offered Basic Life Saving courses in partnership with the Lord Fairfax EMS Council to certify or recertify both medical and non-medical volunteers in CPR.
- Continued to offer Stop the Bleed trainings to LFMRC volunteers and community members. LFMRC Coordinator conducted five training in collaboration with the Warren County Emergency Manager to Axalta Coating Systems staff. Approximately 80 Axalta staff members were trained and received certificates of completion in Stop the Bleed. LFMRC Coordinator also conducted Stop the Bleed trainings and skills checks for 11 LFHD staff members.
- Conducted the first Stroke Smart training for LFMRC volunteers in alignment with the Stroke Smart Virginia program to train volunteers to recognize the signs of a stroke and reduce prehospital delays for timely stroke treatment. Volunteers who completed this training are considered 'Stroke Smart Champions' and can conduct Stroke Smart trainings independently in the community.
- Participated in a regional hybrid MRC Core Competency training camp focusing on training disciplines and subjects related to preparedness, response, leadership, and community resiliency.
- One MRC Vaccinator Skills Check was successfully completed to add a pharmacist to the MRC Vaccinator role to administer COVID-19, Influenza, and back-to-school immunizations (Tdap, HPV, Meningococcal) at future vaccine clinics.
- Partnered with City of Winchester Emergency Management to train members of the LFMRC Shelter Operations Group in general shelter operations at their Mass Care Shelter station training.
- One LFMRC volunteer REVIVE! trainer conducted a REVIVE! Lay Rescuer training and provided boxes of naloxone for members of the Shenandoah Grandparents as Parents (GAP) community group at their monthly meeting. Approximately 30 people were trained. REVIVE! training is the official Opioid Overdose and Naloxone Education (OONE) program for the Commonwealth of Virginia. It trains lay rescuers, healthcare workers, and community members on how to recognize and respond to an opioid overdose emergency using the life-saving medication naloxone.
- One LFMRC volunteer REVIVE! trainer partnered with Shenandoah University School of Pharmacy to conduct three REVIVE! Lay Rescuer trainings to train peer pharmacy students with an emphasis on community-based pharmacy practices and administer boxes of naloxone. Approximately 50 people were trained across the three training sessions.
- Conducted N95 respiratory fit testing training for LFMRC volunteers who became qualified to assist district staff and community partners with fit testing.

VOLUNTEER EVENTS AND DEPLOYMENTS

- Staffed a call center to touch base with approved LFMRC volunteers to confirm their interest in volunteering and collect data to identify future needs for CPR courses.

- Medical LFMRC volunteers deployed to staff a first aid station and provided Basic Life Saving in collaboration with Page County Fire-EMS at the Cooter's 25th Anniversary Festival.
- Assisted LFHD's Dental Preventative Services program staff with completing a dental paperwork filing project to administer program information in qualifying public schools. Approximately 5,000 forms were prepared for distribution.
- Deployed for general logistics support to assist business office staff at multiple LFHD back-to-school immunization clinics.
- Deployed during a statewide emergency response activation for Hurricane Helene. One LFMRC volunteer deployed to Damascus, VA to assist Mount Rogers Health District PHNs with administering Tdap vaccines to individuals exposed to floodwater following Hurricane Helene. One LFMRC volunteer participated in a remote deployment to conduct outreach with individual drinking water providers in Southwest Virginia to determine utility outages and drinking water disruptions following Hurricane Helene.
- Deployed as victim actors to support LFHD's CHEMPACK FSE at both the field and clinical sites during a simulated nerve agent exposure incident. This was a regional MRC deployment opened to Loudoun MRC.
- Deployed as victim actors to support City of Winchester's (CoW) Active Shooter Event Response (ASHER) trainings in collaboration with CoW Emergency Management, Law Enforcement, and Fire & Rescue.
- Coordinated a LFMRC Volunteer Appreciation Event during National Volunteer Week to highlight and recognize LFMRC volunteer accomplishments and contributions.
- Deployed as role players to support Warren County's full-scale emergency shelter exercise by acting as evacuees arriving at an emergency shelter site following a simulated wildfire incident.
- Deployed in general support roles as part of LFHD's Point of Dispensing (POD) exercise.



ENVIRONMENTAL HEALTH

Environmental Health Services protects the public's health by engaging in a wide variety of inspection, permitting, and testing services. LFHD environmental health programs include Food Protection, Lodging, Recreational Activities, Rabies Prevention, Onsite Water and Wastewater, Grade A milk, and Lead Risk Assessment. All data provided in this section is for fiscal year 2025

FOOD PROTECTION

The food protection program inspects and permits food service establishments including restaurants, mobile food units (food trucks) and public food service such as schools and child/adult care facilities. Our inspectors also assist in the investigation of potential foodborne illness outbreaks. Reviews are conducted on construction plans for new and remodeled facilities.



**Permits
Issued**



**Inspections
Conducted**

Food Protection	Clarke	Frederick	Page	Shenandoah	Warren	Winchester	Total
Permits Issued	31	181	69	136	118	169	704
Inspections Conducted	62	450	114	251	218	360	1,455
Total	93	631	183	387	336	529	2,159

LODGING

The lodging program provides annual health and safety inspections along with complaint investigations of regulated public facilities including hotels/motels, bed & breakfasts, and migrant farm worker housing. Reviews are conducted on construction plans for new or remodeled facilities.

Permits Issued	Clarke	Frederick	Page	Shenandoah	Warren	Winchester	Total
Tourist Establishments	4	23	15	16	13	10	71
Migrant Housing	1	9	0	3	0	3	16
Total	5	32	15	19	13	13	87

Inspections Completed	Clarke	Frederick	Page	Shenandoah	Warren	Winchester	Total
Tourist Establishments	6	20	18	18	13	4	79
Migrant Housing	1	12	0	3	0	3	19
Total	7	32	18	21	13	7	98

RECREATIONAL FACILITIES

Environmental Health staff conduct health and safety inspections of facilities including tourist establishment and other public swimming pools, campgrounds, summer camps, and temporary events like fairs/festivals.

Permits Issued	Clarke	Frederick	Page	Shenandoah	Warren	Winchester	Total
Fairs / Festivals	18	31	19	25	30	37	160
Campgrounds	4	6	11	6	7	1	35
Total	22	37	30	31	37	38	195

Inspections Conducted	Clarke	Frederick	Page	Shenandoah	Warren	Winchester	Total
Fairs / Festivals	7	23	32	28	33	82	205
Campgrounds	7	3	14	6	9	1	40
Total	14	26	46	34	42	83	245

RABIES PREVENTION

The rabies prevention program deals with the concerns of rabies and its potential transmission to the human population. Staff investigate reports of possible exposures to rabies, submit animal specimens to Division of Consolidated Laboratory Services (DCLS) for rabies testing, and follow up on animal and human exposures, including posting public notices.

Animal Exposure Incidents by locality/ (positive rabid animals)		
Clarke	Frederick	Page
84 (3)	355 (6)	119 (2)
Shenandoah	Warren	Winchester
144 (5)	210 (3)	92 (0)

TOTAL BITE INCIDENTS

982

TOTAL RABID ANIMALS

19



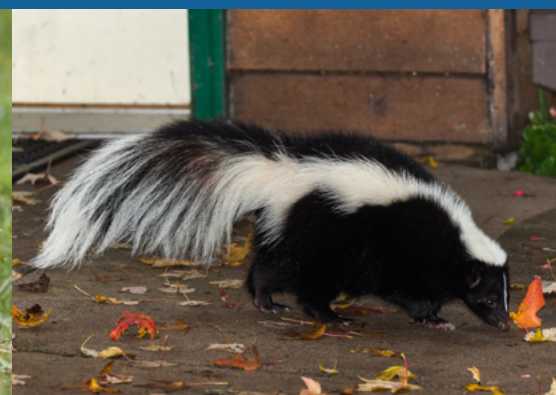
HUMAN VICTIM EXPOSURES

733



ANIMAL VICTIM EXPOSURES

138



WATER & WASTEWATER

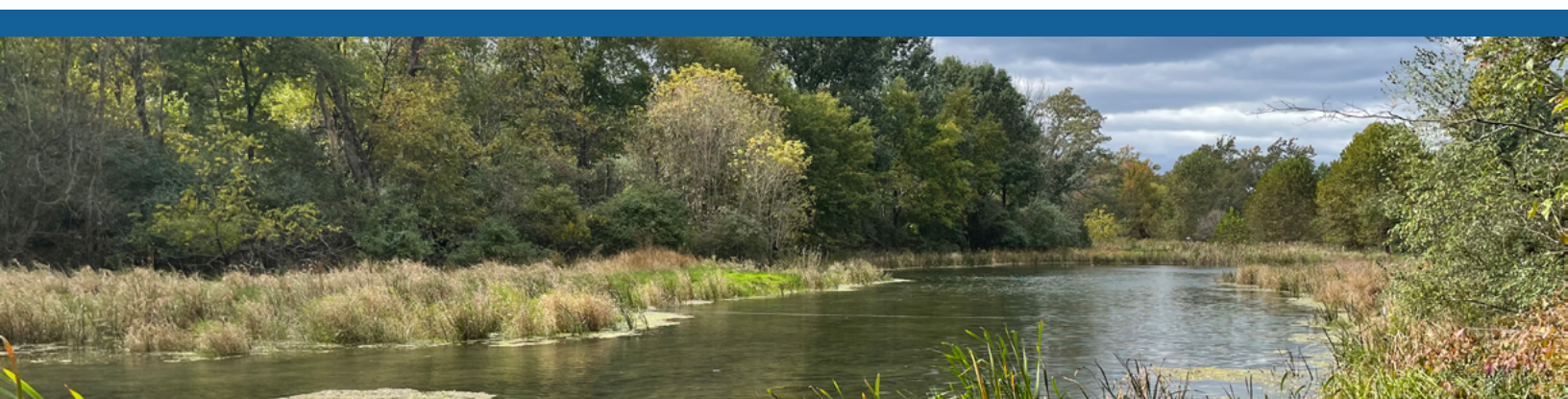
The water and wastewater Program provides surveillance, inspection and regulatory oversight of private wells, on-site sewage disposal systems and sewage handlers. System designs are submitted by the private sector for review by staff.

**For Clarke, Page and Shenandoah, the public may petition our office for direct design service for private wells.*

***For Clarke, staff also issue permits for maintenance repairs for onsite sewage systems per county code.*

Septic & Well Applications	Clarke	Frederick	Page	Shenandoah	Warren	Winchester	Total
Safe, Adequate & Proper Applications (SAP & Non-SAP)	0	84	8	173	24	0	289
Septic Applications	33	207	142	148	193	0	723
Private Well Applications	40/0*	184	86/4*	92/22*	155	0	583
Minor Modification Applications	11	18	13	17	7	0	66
Septic Repair Applications	4/25**	50	12	21	35	0	147
Total	113	543	265	473	414	0	1,808

Septic & Well Permits Issued	Clarke	Frederick	Page	Shenandoah	Warren	Winchester	Total
Septic Permits Issued	18	154	109	115	154	0	550
Well Permits Issued	14	93	81	70	100	0	358
Operation Permits Issued	10	73	33	61	96	0	273
Total	42	320	223	246	350	0	1,180



GRADE A MILK

There are two Grade A dairy-producing facilities in LFHD, both located in Frederick County; HP Hood™ is the largest milk plant on the East Coast of the United States, and Desi Fresh™, which recently relocated from New York.

GRADE A DAIRY PROGRAM		
Action	Breakdown By Facility	Totals FY25
PMO inspections	7-HPH, 5-VMP, 2 DF	14
Manufacturing inspections	6-HPH	6
Other regulatory inspections	IMS AND FDA	8
Plan review inspections	64-HPH, 2-VMP	66
Plan review requests	40- HPH, 1 VMP, 3-DF	44
Sampling -product	92-HPH, 34-VMP, 3 DF	129
Sampling - water	8-HPH, 10-VMP	18
Sampling - manufacturing	ALL HPH	48
Equipment testing - including broken seal testing	48-HPH, 12-VMP, 3-DF	63
Appendix n review	HPH AVG-4,410 VMP AVG- 1,125	5,535
Chart review	HPH AVG - 43,680 VMP AVG -8,400	52,080 FY25 OR 4,340 Monthly Chart Reviews
Cat 50 sampler evaluation	23-HPH, 4-VMP	27
Drug residue testing	20-HPH, 22-VMP	42
Enforcement actions (complaints and noav)	5-HPH, 3 VMP	8
New grade a permitted facility	Opened new facility 5/30/25	1
Average Grade A Milk Produced HP HOOD = 1,413,040 lbs sold daily, equivalent to 166,967 Gallons of Grade A Milk produced daily		60.8 million gallons - FY25 Average
Average Grade A milk for VALLEY MILK = 263,700 lbs sold daily, equivalent to 31,170 Gallons produced daily		10.9 million gallons - FY25 Average

EPIDEMIOLOGY

The Lord Fairfax Health District Epidemiology team is responsible for communicable disease surveillance and investigation, outbreak investigations and staff emergency readiness and community preparedness.

REPORTABLE DISEASES

Healthcare professionals and laboratories are required to report over 70 diseases and conditions in Virginia to help protect the public's health. The reported data enables public health agencies to act quickly to prevent the spread of disease, identify and respond to outbreaks, and provide an overall snapshot of disease trends at the local, state, and national levels.

The local health department conducts investigations into reportable diseases and conditions and takes steps to prevent others from becoming ill. These steps might include messaging to raise public awareness, pulling a contaminated item from stores, or offering preventive treatments to people who have been exposed.



For more information on VDH Disease Reporting and Control Regulations visit here:

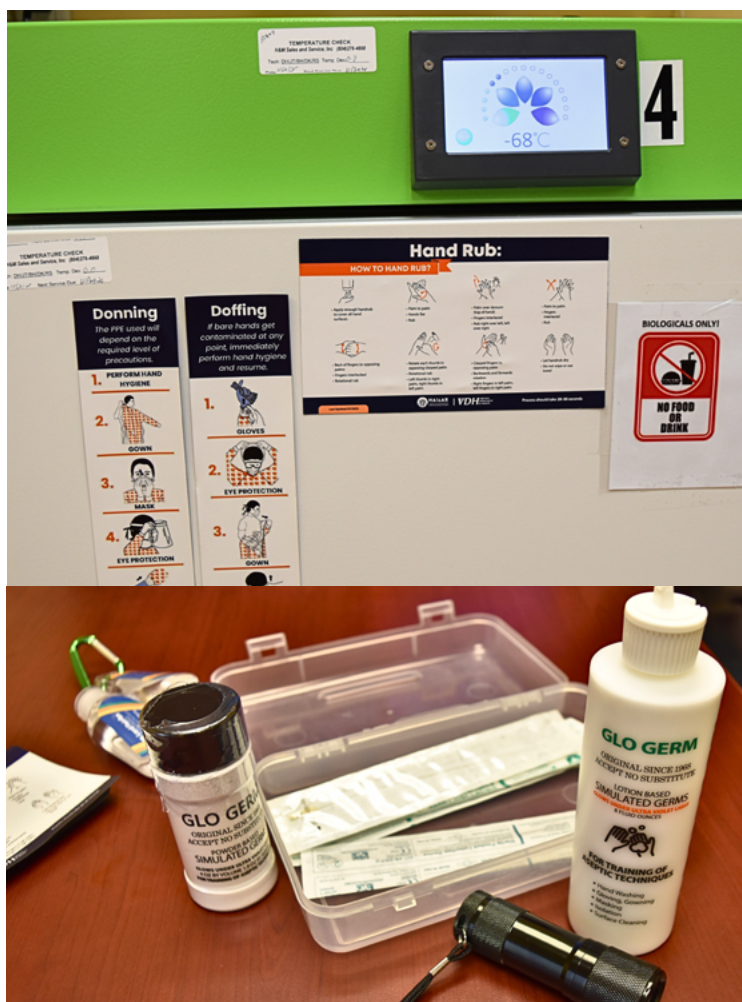
During the fiscal year that begins July 1, 2024, through June 30, 2025, LFHD investigated 1,497 reports that met the CDC case definition for the specific disease, excluding COVID-19.

All Reportable Cases by Program Area and Locality							
Program Area	Clarke	Frederick	Page	Shenandoah	Warren	Winchester	LFHD Total
Communicable Disease	15	68	24	31	30	13	181
Healthcare Associated Infection	*	19	*	6	7	7	43
Hepatitis	16	53	25	28	29	27	178
Sexually Transmitted Infection	18	286	55	103	103	168	733
Toxic Substance	0	14	*	8	12	15	53
Tuberculosis	0	11	0	10	*	5	30
Vaccine-Preventable Disease	*	14	7	18	27	*	71
Zoonotic	13	74	14	57	39	8	205
Total	65	538	130	262	252	250	1,497

* Indicates between 1-4 cases; data is suppressed to protect anonymity

Top Reportable Conditions in LFHD

Reportable Condition	LFHD Total
Coronavirus Disease 2019 (COVID-19)	3,851
Chlamydia trachomatis infection	604
Lyme disease	162
Hepatitis C, chronic	151
Gonorrhea	102
Campylobacteriosis	81
Lead, elevated levels	51
Pertussis	45
Salmonellosis (non-Typhi, non-Paratyphi)	42
Carbapenemase-Producing Organism	41
Latent Tuberculosis Infection	29
Hepatitis B, chronic	20
Cryptosporidiosis	19
Varicella (Chickenpox)	19
Total Early Syphilis	16
E. coli infection, shiga toxin-producing	15
Group A Streptococcus, invasive infection	15
Legionellosis	14
HIV	11



OUTBREAKS

The LFHD Epidemiology team investigated 89 outbreaks in the district. These included outbreaks of over 10 different etiologic agents. These outbreak investigations occurred in a variety of settings with the majority in schools, daycares, and long-term care facilities.

Type of Facility	Suspected Etiologic Agent								Total Outbreaks
	Bordetella pertussis	Influenza	Norovirus	Other Agents or Conditions	Respiratory Syncytial Virus (RSV)	Scabies	COVID-19	Unknown Etiologic Agent	
Daycare / Pre-K	0	2	0	1	0	0	2	0	5
Group Home	0	0	0	0	0	0	1	0	1
Long-Term Care (ALF, SNF, Multicare)	0	18	7	7	2	2	36	1	73
Medical Facility (Non-LTC)	0	0	0	0	0	0	1	0	1
Other	1	0	0	0	0	0	0	0	1
School (K-12)	0	1	0	6	0	0	0	1	8
Total	1	21	7	14	2	2	40	2	89

SITE VISITS

The LFHD Epidemiology Team, in collaboration with our Regional Infection Preventionist, conduct infection prevention and control (IPC) assessments at healthcare and other facilities in the district. The assessments are not regulatory and are designed to identify a facility's IPC program strengths and areas of opportunity. Assessments can be proactive or in response to an outbreak or known infection prevention concern.

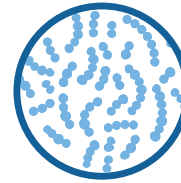


16

Total Site Visits

COLONIZATION SCREENINGS

Colonization screenings are also conducted by public health during outbreaks or in response to detection of certain multidrug-resistant organisms (MDRO). Screenings, in combination with recommended infection control practices, are implemented to prevent disease transmission in our region.

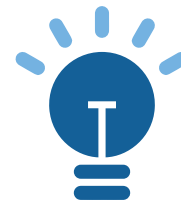


10

Colonization Screenings

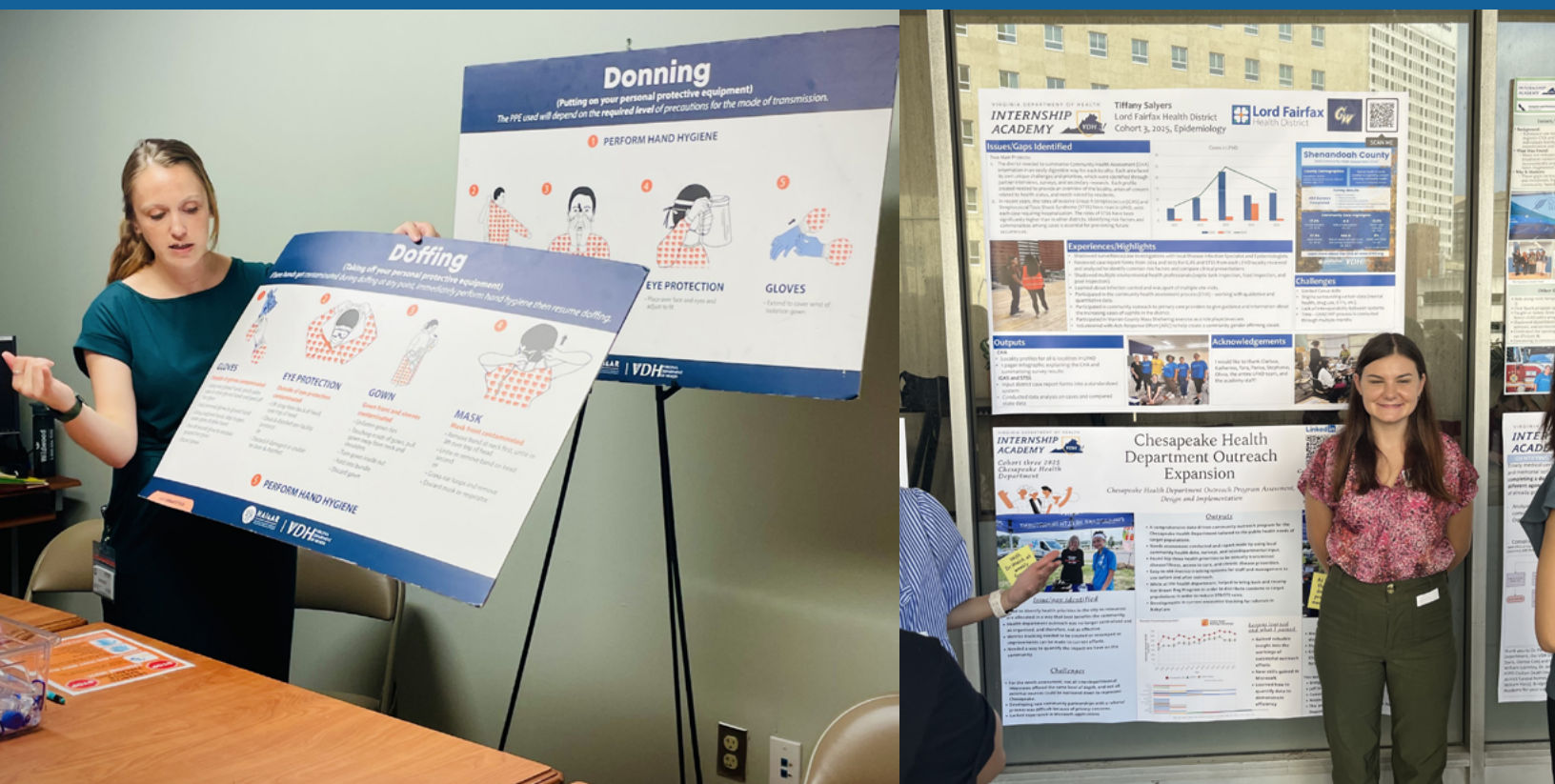
EDUCATION EVENTS

Education related to assessment findings at a facility or conducted in the community on public health topics is a priority of the LFHD Epidemiology Program. We are dedicated to keeping our community healthy by ensuring our stakeholders, healthcare workers, and residents are informed on important public health issues.



36

Education Events



POPULATION HEALTH

PROGRAM OVERVIEW

The LFHD Population Health program works to understand the health landscape of the community and actively works to improve opportunities, programs, and services that support the health of its community members. This involves active data monitoring and analysis, community collaboration, health education, outreach and engagement, and more. Through many of these activities, LFHD has aimed to improve its visibility and involvement in the community within the past few years. These efforts have strengthened and created new relationships with community organizations, community members, and local governmental partners, as well as an overall improved understanding of our role within the community for our residents.

Population health refers to the health status and outcomes of a group of people, rather than an individual. It encompasses the factors that influence the health of a population, including:

- Social drivers of health
- Lifestyle factors
- Healthcare access & quality
- Environmental Influences

It aims to improve the overall health and well-being of communities by identifying and addressing these factors. It involves:

- Monitoring health trends
- Analyzing health disparities
- Developing and implementing interventions



COMMUNITY HEALTH ASSESSMENT (CHA) AND COMMUNITY HEALTH IMPROVEMENT PLAN (CHIP):

The **Community Health Assessment (CHA)** is a systematic process to identify the health needs within the community by conducting surveys and interviews and comparing the results with other data measures from our community.

This report is used by community organizations and individuals alike to understand the current picture of health in our community. This process occurs every 3 years.

The **Community Health Improvement Plan (CHIP)** is the subsequent process that uses the data collected in the CHA to identify health priorities for the community and work towards making progress in addressing concerns.



Learn more about the process and the current stage of the CHA/CHIP by visiting [Community Health Assessment – Lord Fairfax Health District](#)

During FY25, LFHD began its first joint CHA, partnered with Valley Health, to share the role and responsibilities of convening this process; This process includes conducting surveys, holding community interviews, and engaging with community professionals and residents to form a robust analysis of the local health issues.

- Across the 6 LFHD localities, **2,572** survey responses were collected from community members regarding their perceptions of community health issues.



- 12** Group Community Partner Interviews were conducted to better understand the depth of community health issues.



- 24** unique community organizations completed the Community Partner Survey sharing information about their specific services, efforts, and capacity.



- More than **90** individual community and health secondary data measures were analyzed and reported for each LFHD locality and Virginia.



HEALTH EDUCATION:

Providing accurate health education is a key responsibility of the population health team. This education should be tailored to its audience by understanding their demographics, interests, and goals. The message, tone, and style must resonate and be appropriate for the audience to ensure clarity, engagement, and a strong connection.

- In FY25, LFHD participated in roughly 15 dedicated health education opportunities to schools (K-12 and higher education), community organizations, businesses, and more.



REVIVE!

REVIVE! is Virginia's Opioid Awareness & Overdose Prevention Program that facilitates educational trainings and naloxone distribution for at-risk populations. **In FY25, the Population Health team distributed 262 boxes of naloxone in the community.** The Population Health team has the capacity to conduct these trainings and distribute naloxone, but there are additional avenues to provide naloxone in the community—such as the VDH No-Cost naloxone Distribution Program. <https://www.vdh.virginia.gov/naloxone/naloxone-distribution-to-community-partners/>



COMMUNITY OUTREACH AND ENGAGEMENT:

Making connections with community members and having conversations about how to live healthy lives is key to building strong relationships in our community.



OVER
40

LFHD outreach events
across it's localities

MOBILE UNIT

The Mobile Unit is a project funded by American Rescue Plan Act (ARPA) Targeted Community Outreach funds that allow the health department to provide services to our community in a mobile capacity.

The Mobile Unit was purchased in February 2025 and during FY25, plans were developed to provide immunizations and other services in the community.

The Mobile Unit will be on the road in the spring of 2026.



WOMEN, INFANTS AND CHILDREN (WIC)

The mission of the Lord Fairfax Health District WIC program is to focus on setting up each family with the support and guidance they need in monumental moments of growth and development.

The program supports and guides families through:

BREASTFEEDING PROMOTION AND SUPPORT:

WIC staff work to encourage human milk feeding and guide them on this journey by providing one-on-one breastfeeding support through peer counselors. All WIC staff are available for participants to answer questions and provide educational guidance and handouts 24/7. Staff remain knowledgeable about other services in the community provided by external partners so they can make referrals if there is a need that falls outside of the WIC scope of practice. During FY25, the peer counselors of the LFHD WIC Program have contacted 1,438 clients for support needs.



NUTRITION EDUCATION:

WIC staff tailor appointments to each family and guide the goal setting process to meet their unique needs and encourage success. During this process, education is provided on a variety of topics including but not limited to physical activity, food safety, My Plate, beverage intake, development, and oral care.



HEALTHY FOODS:

WIC staff review eligible food benefits with clients and explain how to use and redeem their benefits. Staff also discuss what is offered on the food package and encourage overall redemption, which promotes variety in the diet.

REFERRALS TO OTHER LOCAL COMMUNITY RESOURCES:

WIC staff are also ensuring clients are supported outside of the WIC program by connecting them to additional resources available in the community. During FY25, the WIC program has utilized the performance management process to encourage community collaboration and in turn increase outreach efforts.



EXAMPLES OF RECENT COMMUNITY EFFORTS:

- Attended the Our Health baby shower events in which those from the community are scheduled a WIC appointment and if eligible, connected to our car seat program.
- Provided outreach brochures to the local Congregational Community Action Project (CCAP)
- Provided informational session to United Way on services that WIC offers to better help those interested in getting assistance.
- Coordinated having a representative from Health Families to be present each Monday at the Winchester office to connect WIC clients with their services.



20,689
WIC participants

Nutrition Clinic Participants Served			
Winchester	Shenandoah	Warren	Page
11,968	4,515	2,275	1,931



Our WIC staff includes 3 Office Service Specialists, 3 Nutritionist Associates, 2 Nutritionists, and 2 Breastfeeding Peer Counselors.

