



2019 MAPP2Health

INVEST IN YOUR COMMUNITY

4 Considerations to Improve Health & Well-Being *for All*

WHAT Know What Affects Health



WHERE Focus on Areas of Greatest Need

Your zip code can be more important than your genetic code. Profound health disparities exist depending on where you live.



WHO Collaborate with Others to Maximize Efforts



HOW Use a Balanced Portfolio of Interventions for Greatest Impact

- Action in one area may produce positive outcomes in another.
- Start by using interventions that work across all four action areas.
- Over time, increase investment in socioeconomic factors for the greatest impact on health and well-being for all.

Four ACTION Areas



VISIT www.cdc.gov/CHInav FOR TOOLS AND RESOURCES TO IMPROVE YOUR COMMUNITY'S HEALTH AND WELL-BEING



Robert Wood Johnson Foundation



The Big Picture: How to Assess and Improve Community Health



Mobilizing for Action through Planning and Partnerships (MAPP)

MAPP2Health History & Framework

2016 MAPP included participation from

105

community partners and

10

community coalitions

Cville/Albe
2008

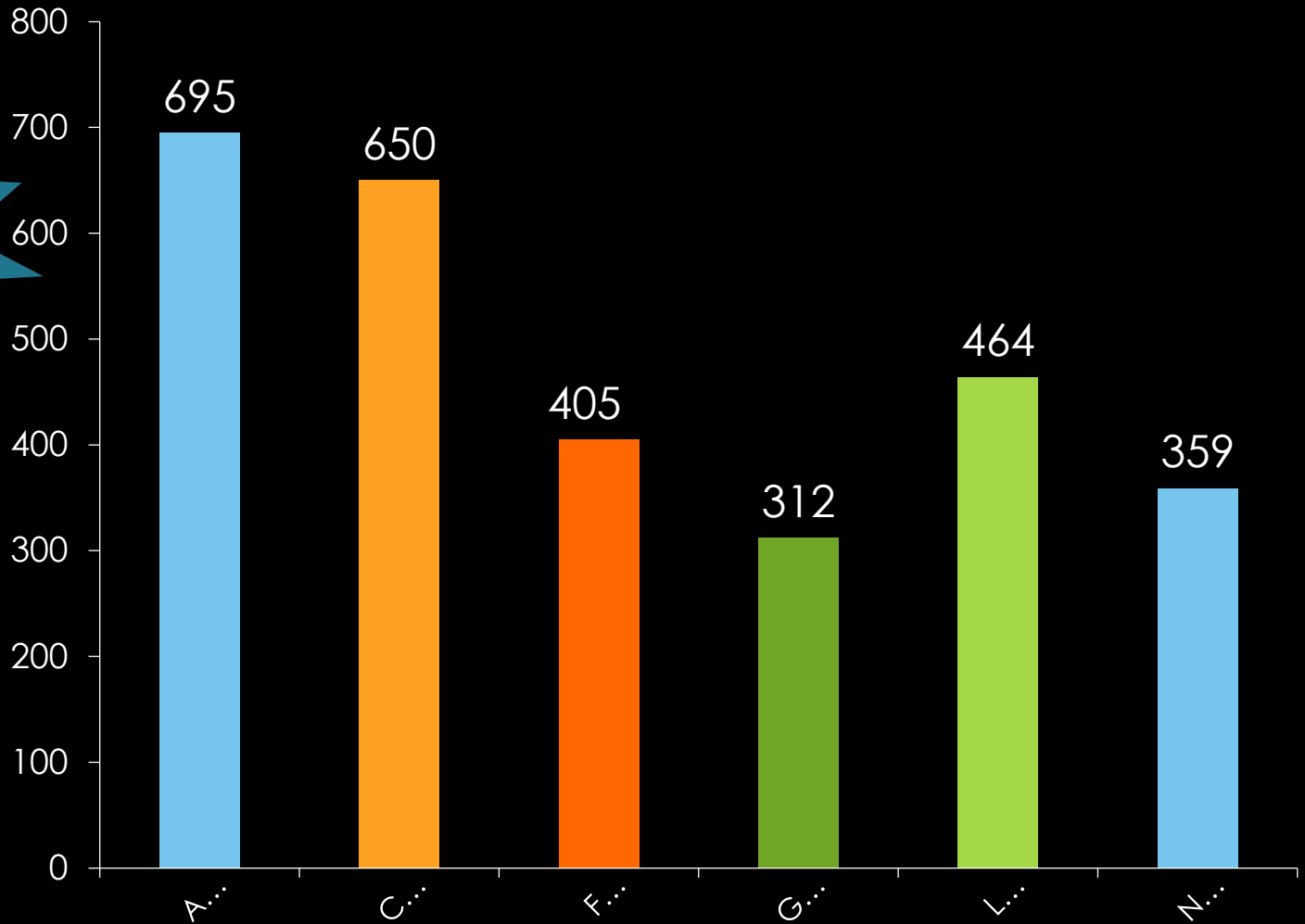
Health District
2012

Health District
2016

Health District
2019

2016 Community Themes and Strength Responses

2,885
survey
responses



MAPP2Health Priorities & RoadMAPP



Promoting Healthy Eating and Active Living



Addressing Mental Health and Substance Use



Reducing Health Disparities and Improving Access to Care



Fostering a Healthy and Connected Community across the Lifespan



MAPP Core Group +
County Councils

Community
Coalitions

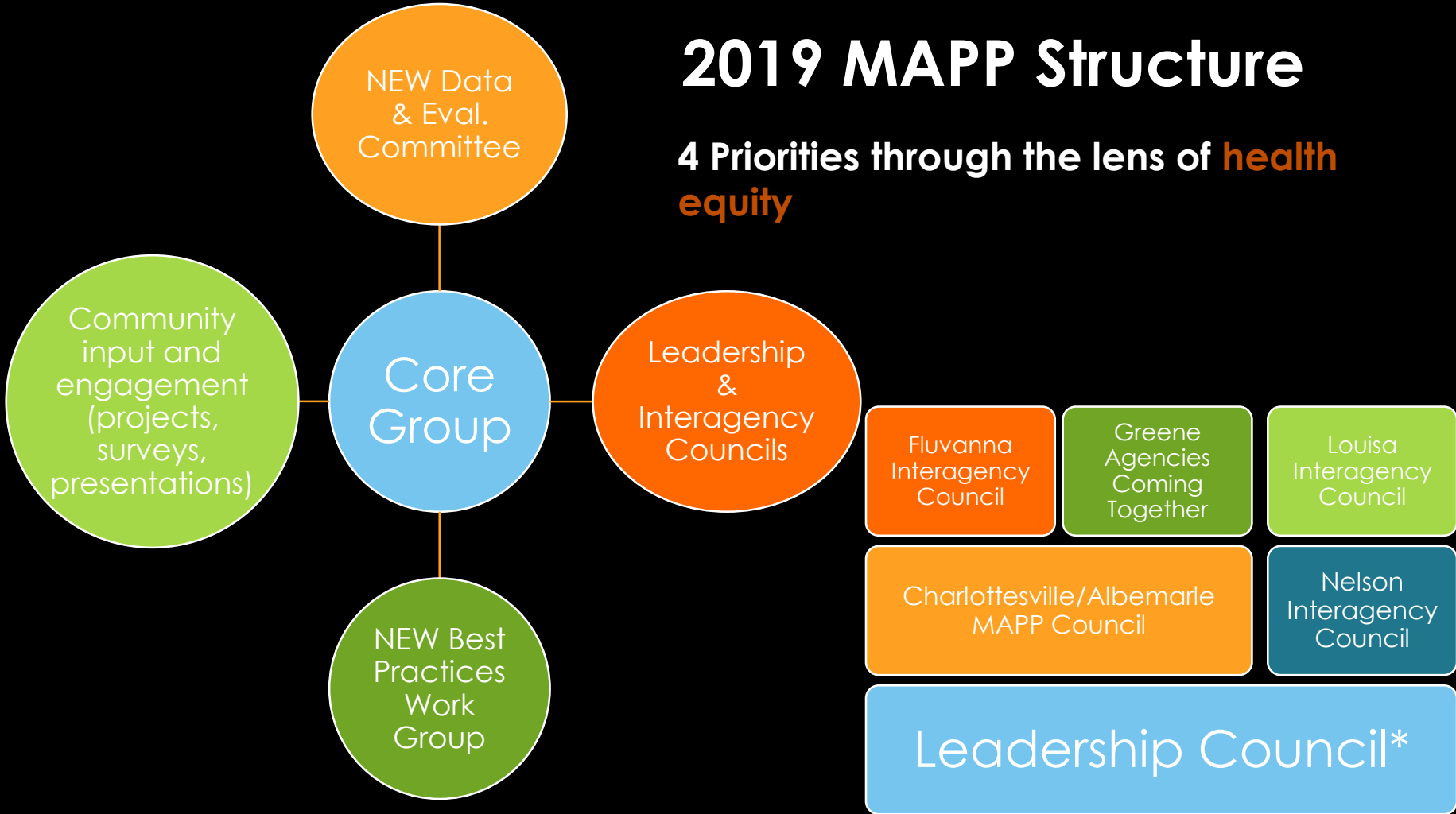
MAPP
Partners and
Organizations

Community
Groups
(businesses,
churches)

Community
Members

2019 MAPP Structure

4 Priorities through the lens of **health equity**



NEW Data & Eval. Committee

Core Group

Leadership & Interagency Councils

Community input and engagement (projects, surveys, presentations)

NEW Best Practices Work Group

Fluvanna Interagency Council

Greene Agencies Coming Together

Louisa Interagency Council

Charlottesville/Albemarle MAPP Council

Nelson Interagency Council

Leadership Council*

2019 MAPP2 Health: What's New

3 meetings per locality

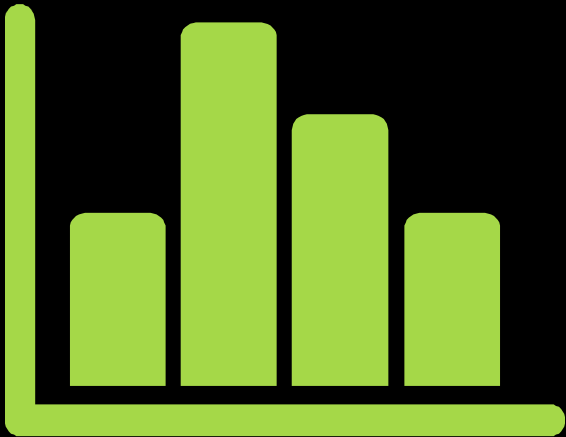


Meeting Schedule

- TODAY: Overview and Unnatural Causes Clips + Discussion
- Meeting #2: Louisa Data Profile + Photovoice Discussion
- Meeting #3: Photovoice Results, Strategy Selection, Grant Discussion

2019 MAPP2 Health: What's New

- Data and Evaluation Committee



- Best Practices Work Group



2019 MAPP2 Health: What's New

- Photovoice Projects



- Funding for Localities





Questions?

**Putnam Ivey, *Healthy
Communities Coordinator***
Thomas Jefferson Health District
434-972-6241
putnam.ivey@vdh.virginia.gov

2019 MAPP2Health