

# Fluvanna County Data Profile

---

2019 MAPP2HEALTH COMMUNITY HEALTH ASSESSMENT

Last Updated: February 6, 2019  
THOMAS JEFFERSON HEALTH DISTRICT

# 1 TABLE OF CONTENTS

---

2	Who are we? ( <i>Demographics</i> ) .....	3
2.1	Demographic Characteristics.....	3
2.2	Population Estimates by Density, Gender, Race, Age, and Generation .....	4
2.3	Speakers of Languages Other than English .....	5
3	MAPP Priority: Promote Healthy Eating and Active Living.....	5
3.1	Adult Obesity by Locality .....	5
3.2	District Adult Obesity Map .....	6
3.3	District Child Obesity Map .....	7
3.4	Adult Physical Inactivity by Locality .....	8
3.5	Access to Exercise Opportunities by Locality .....	8
3.6	Food Insecurity by Locality .....	9
3.7	Child Food Insecurity by Locality .....	9
4	MAPP Priority: Address Mental Health and Substance Use .....	10
4.1	Poor Mental Health Days by Locality .....	10
4.2	Adult Smoking by Locality .....	10
4.3	Suicide Rates by Locality .....	11
4.4	Opioid Overdoses by District, Locality, and Age .....	11
5	MAPP Priority: Reduce Health Disparities and Improve Access to Care .....	13
5.1	District Life Expectancy by Census Tract .....	13
5.2	Poverty Status of Families by Locality.....	14
5.3	ALICE Cost of Living by County.....	14
5.4	Uninsured Adults by Locality.....	16
5.5	Low Birth Weight by Locality and Race.....	17
5.6	Chronic Disease by Locality .....	18
5.6.1	COPD .....	18
5.6.2	Asthma .....	18
5.6.3	Prediabetes .....	18
5.6.4	Diabetes.....	18
5.6.5	Heart Disease .....	19
5.6.6	Heart Attacks .....	19
6	MAPP Priority: Fostering A Healthy and Connected Community for all Ages.....	20

6.1	Students Eligible for Free and Reduced Lunch by School .....	20
6.2	On-Time Graduation Rates by High School .....	20
6.3	Third Grade English Reading SOL Pass Rates by School.....	21
6.4	Additional School Data.....	21
6.4.1	School Membership Data .....	21
6.4.2	Suspension Rates by School.....	21
6.5	Workers with No Vehicles Available by Locality .....	21

# WORKING DRAFT

*Note:* to review MAPP priority indicators online, visit the Thomas Jefferson Health District’s Tableau Public page: <https://public.tableau.com/profile/thomas.jefferson.health.district#!/>. Demographics, opioid addition and chronic disease data can be viewed at the Virginia Department of Health’s Data Portal: <http://www.vdh.virginia.gov/data/>.

For questions about the data, or to request a copy of the MAPP Data Dictionary for detailed information on each priority indicator, contact TJHD’s Data Analyst at 434-422-3214.

# Fluvanna County Data Profile

## 2 WHO ARE WE? (DEMOGRAPHICS)

---

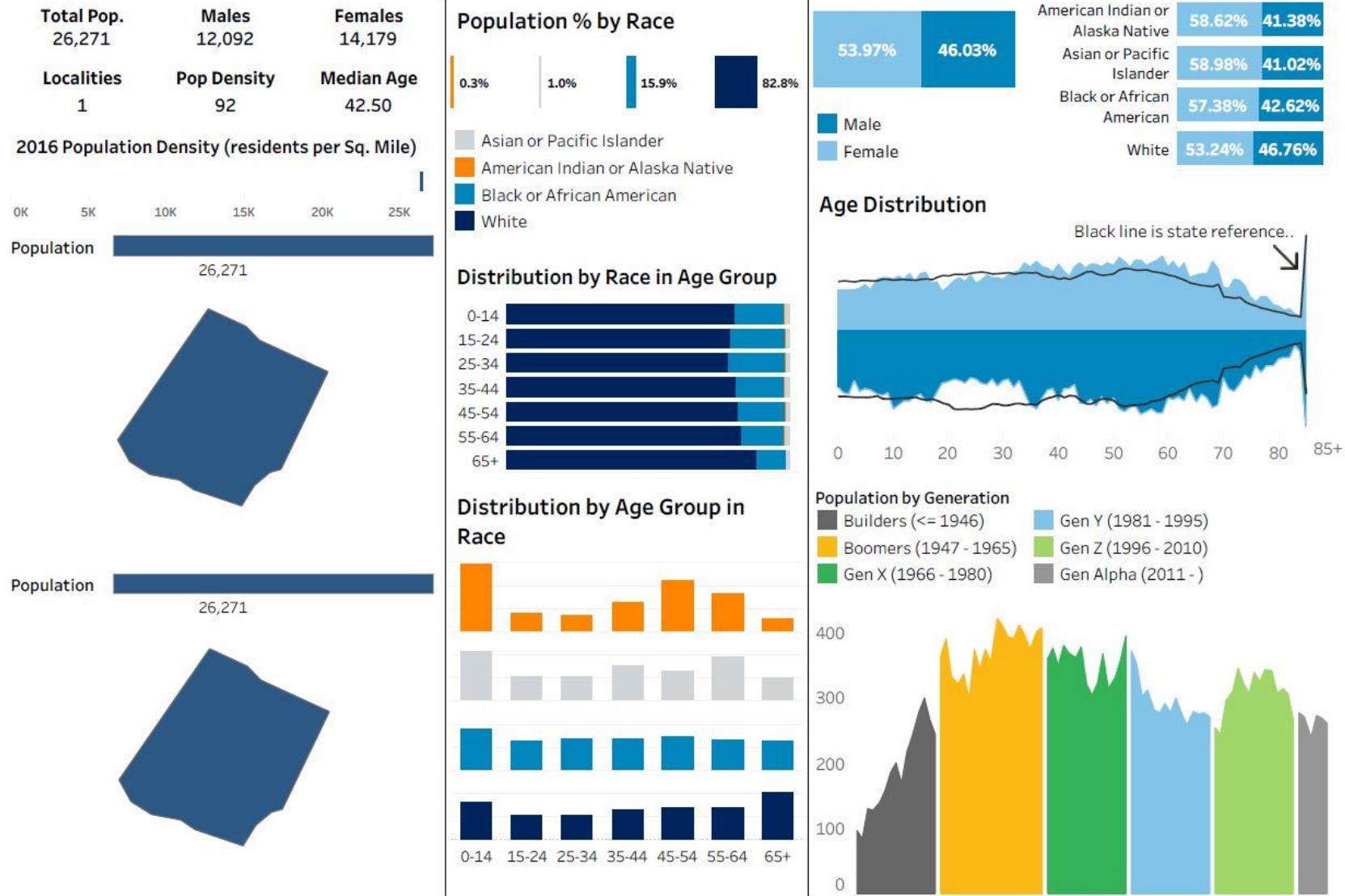
### 2.1 DEMOGRAPHIC CHARACTERISTICS

**Table View (Fluvanna County)**

Characteristic	Locality	State
Total population	26,046	8,310,301
Average Household size	2.53	2.61
Below poverty (%)	6.9	11.4
Foreign Born (%)	2.8	11.9
High School graduate or higher (%)	89.3	88.6
Mean travel time to work (minutes)	32.7	28.1
Health Insurance Coverage (%)	91.9	89.3
Health Insurance Coverage - Public (%)	28.4	26.1
Language spoken at home - English (%)	96.2	84.5
Language spoken at home - Non English (%)	3.8	15.5
Median Age	42.6	37.8
Median home value (\$)	222,500	248,400
Median household income (\$)	66,425	66,149
Unemployment Rate (%)	5.3	5.9
Veterans (%)	11.4	11
With Disability (%)	13.6	11.3

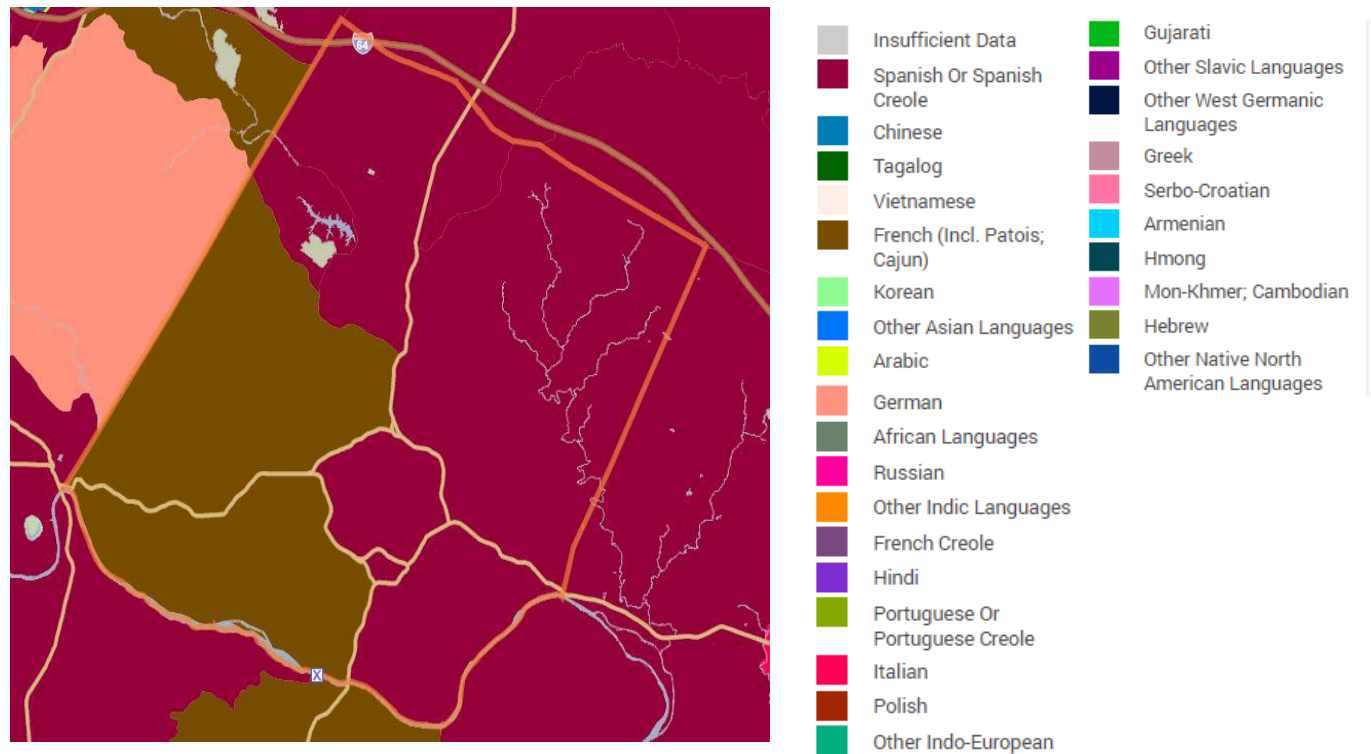
**Fluvanna County Demographic Characteristics, 2016.** Source: Virginia Department of Health Data Portal, 2019. Table available at <http://www.vdh.virginia.gov/data/american-community-survey/>.

## 2.2 POPULATION ESTIMATES BY DENSITY, GENDER, RACE, AGE, AND GENERATION



**Fluvanna County Demographic Profile, Population Estimates by Total, Density, Gender, Race, Age, and Generation, 2016.** Source: Virginia Department of Health Data Portal, 2019. Table available at <http://www.vdh.virginia.gov/data/demographics/>

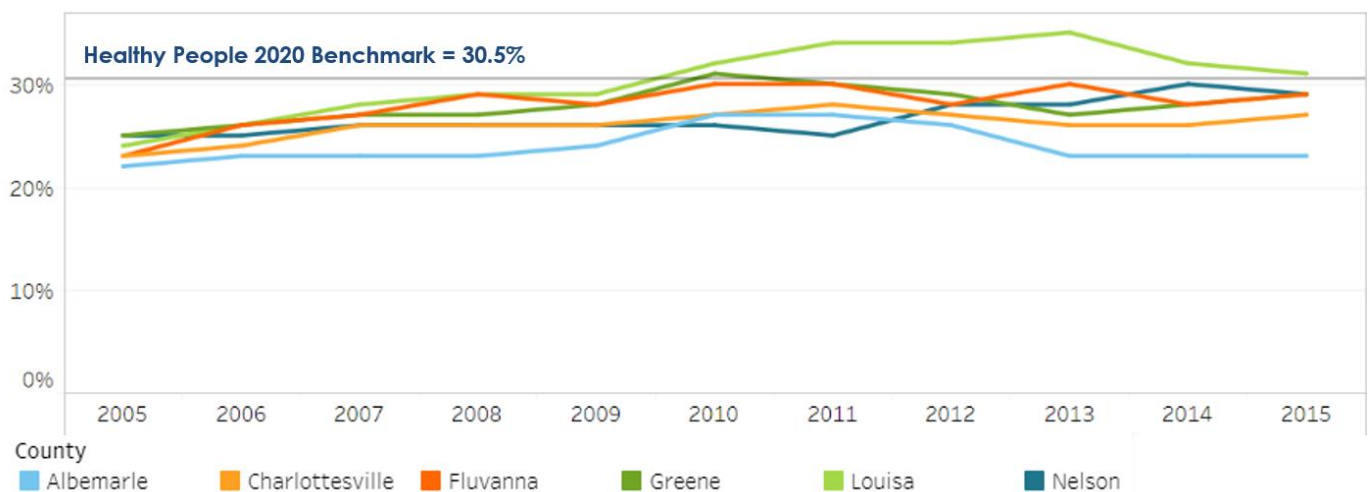
## 2.3 SPEAKERS OF LANGUAGES OTHER THAN ENGLISH



Predominant Language, not including English, Spoken at Home, 2011-2015. Source: Policy Map, 2019. Available at <https://www.policymap.com/maps>

## 3 MAPP PRIORITY: PROMOTE HEALTHY EATING AND ACTIVE LIVING

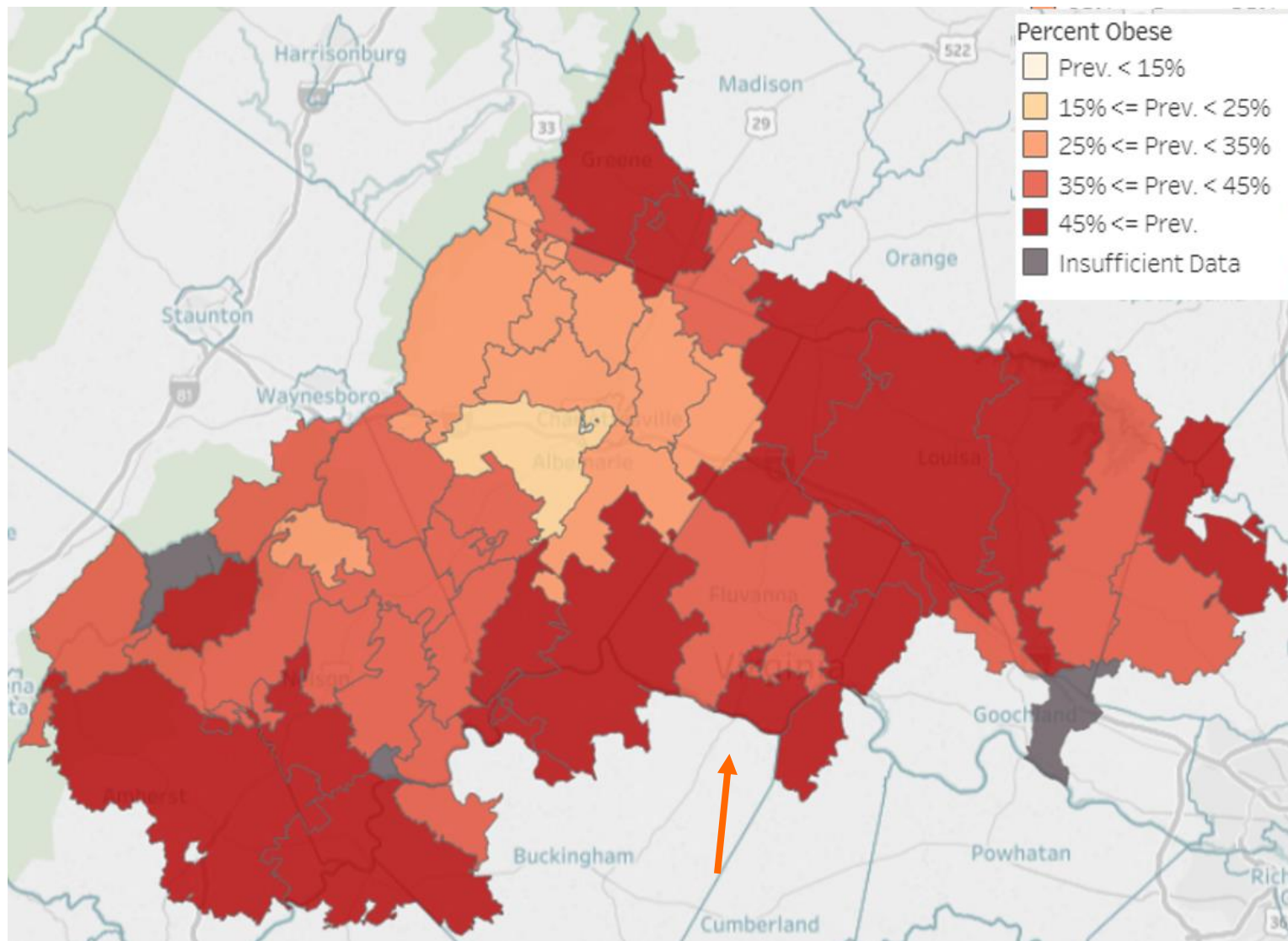
### 3.1 ADULT OBESITY BY LOCALITY



Percent of Obese Adults, by TJHD Locality, 2005-2015. Source: Robert Wood Johnson Foundation (RWJF), County Health Rankings, 2018.

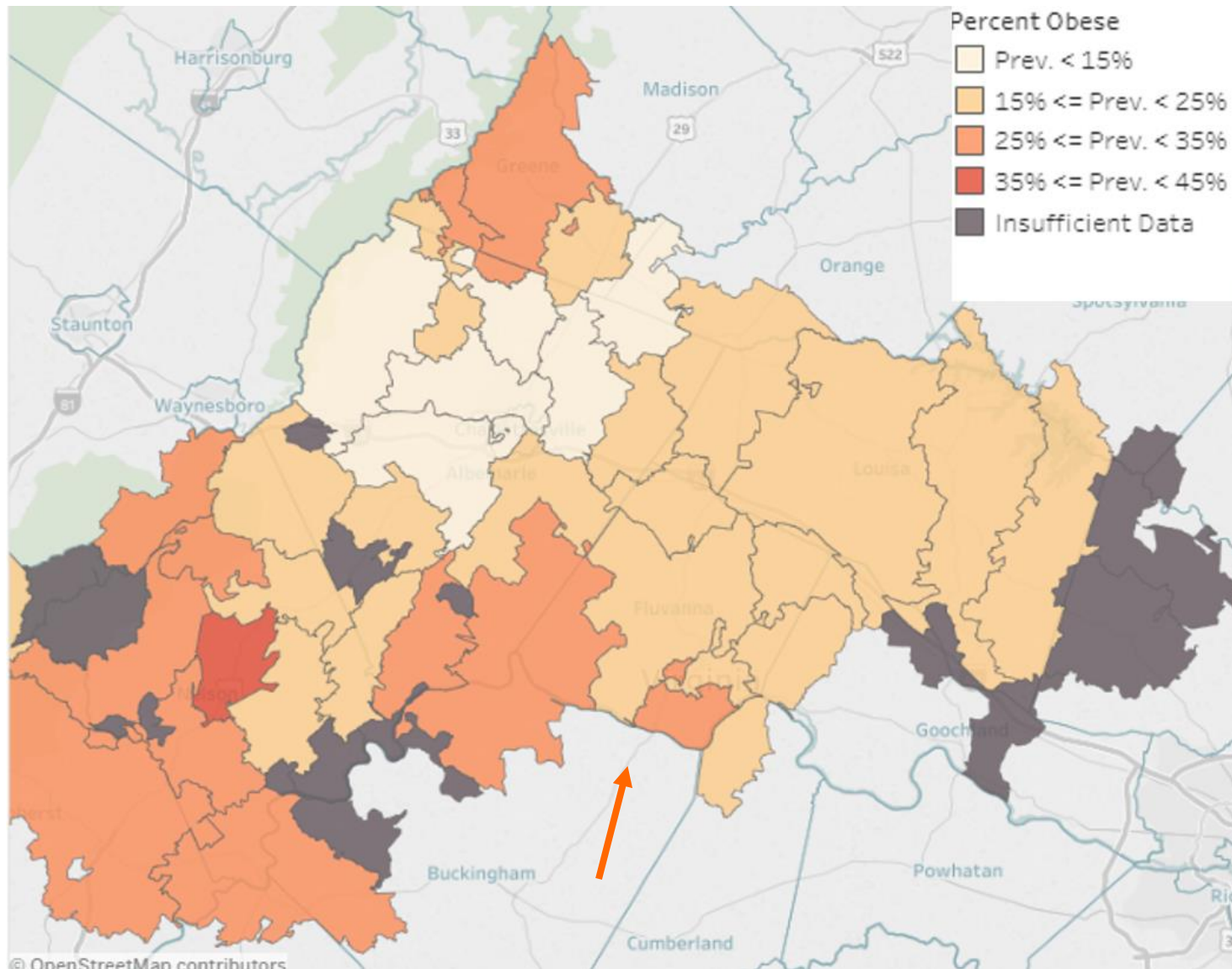


### 3.2 DISTRICT ADULT OBESITY MAP



**Percent of Obese Adults**, by TJHD Zip Code Tabulation Area, 2016. Source: Translational Health Research Institute of Virginia (UVA Clinical Data Repository), 2017.

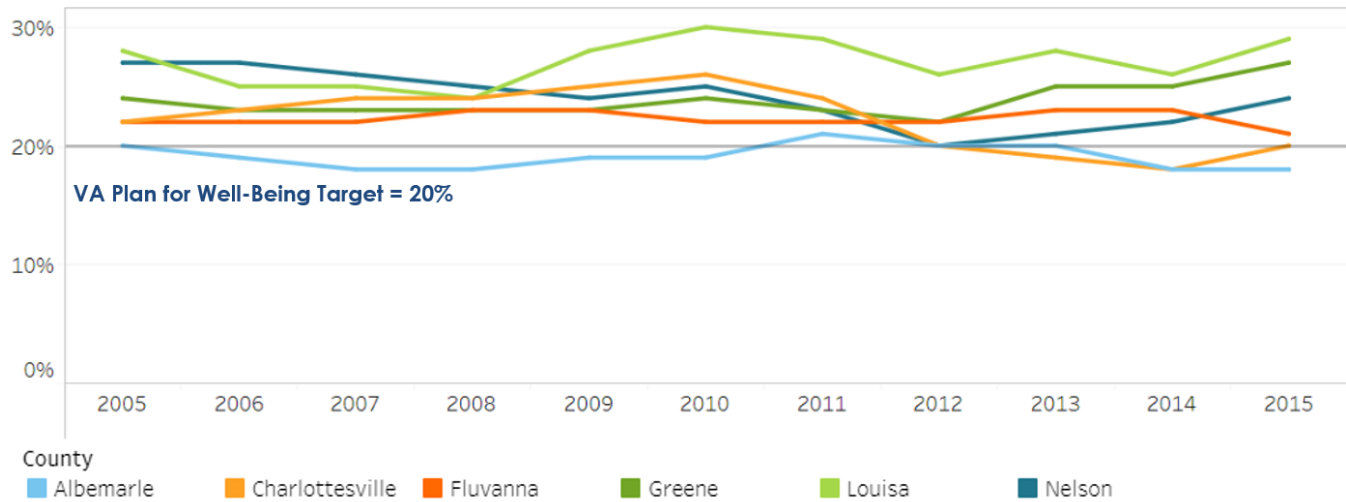
### 3.3 DISTRICT CHILD OBESITY MAP



**Percent of Obese Children**, by TJHD Zip Code Tabulation Area, 2016. Source: Translational Health Research Institute of Virginia (UVA Clinical Data Repository), 2017.

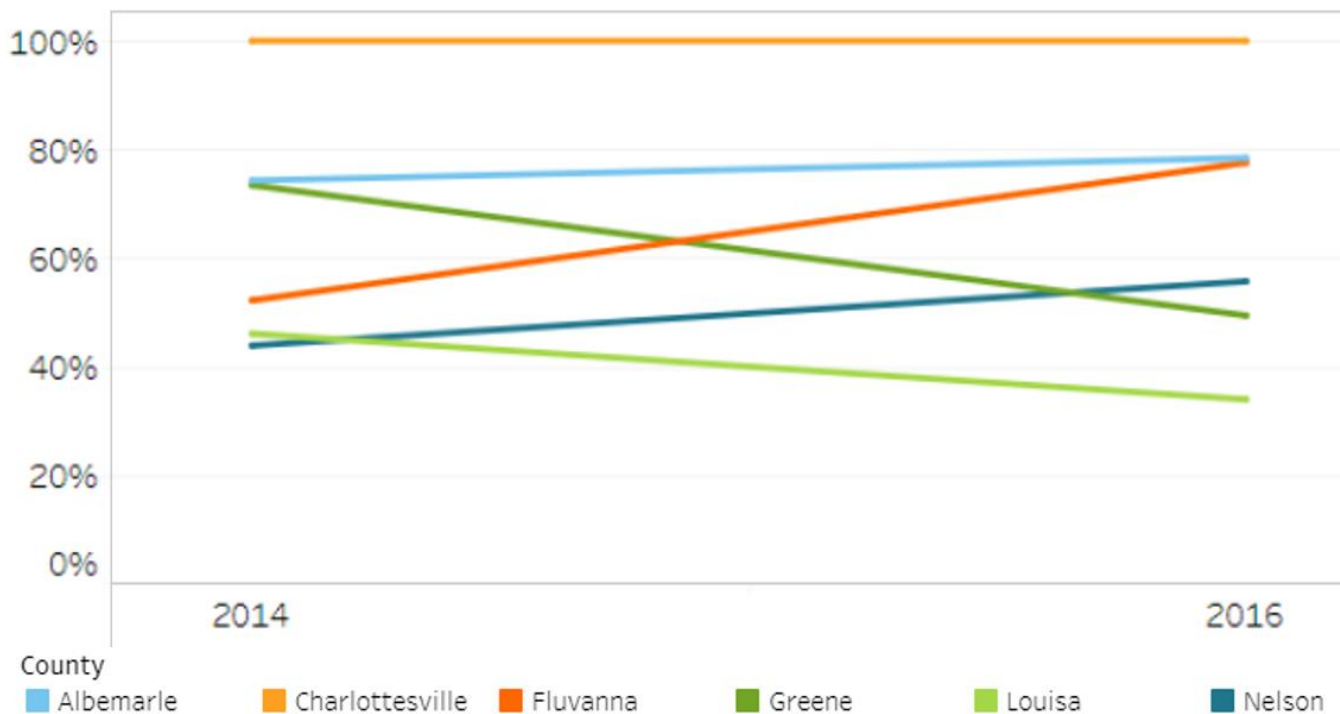


### 3.4 ADULT PHYSICAL INACTIVITY BY LOCALITY



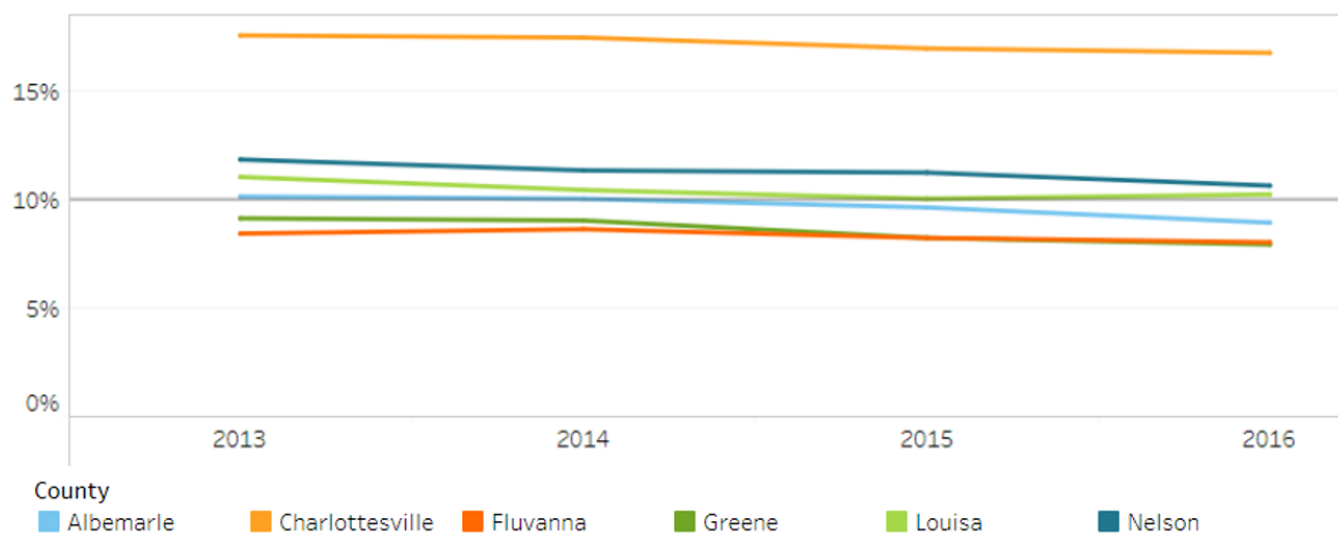
**Percent of Adult Physical Inactivity, by TJHD Locality, 2005-2015.** Source: County Health Rankings, 2018.

### 3.5 ACCESS TO EXERCISE OPPORTUNITIES BY LOCALITY



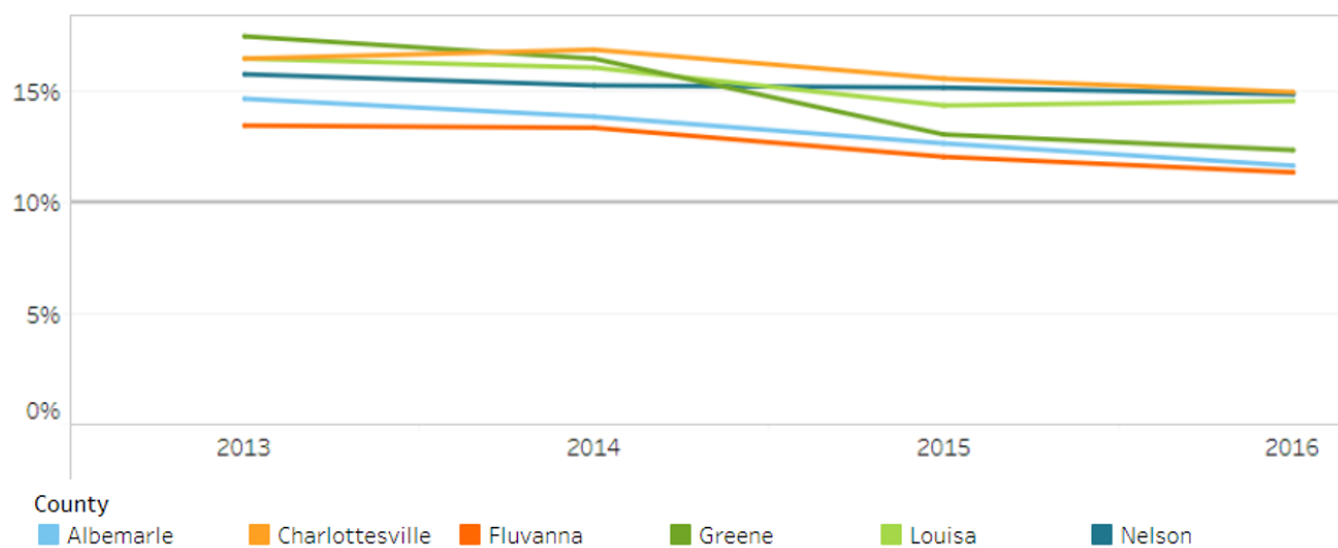
**Percent Access to Exercise Opportunities, by TJHD Locality, 2014 & 2016.** Source: County Health Rankings, 2018.

### 3.6 FOOD INSECURITY BY LOCALITY



**Food Insecurity**, by TJHD Locality, 2013-2016. Source: Map the Meal Gap, Feeding America, 2018.

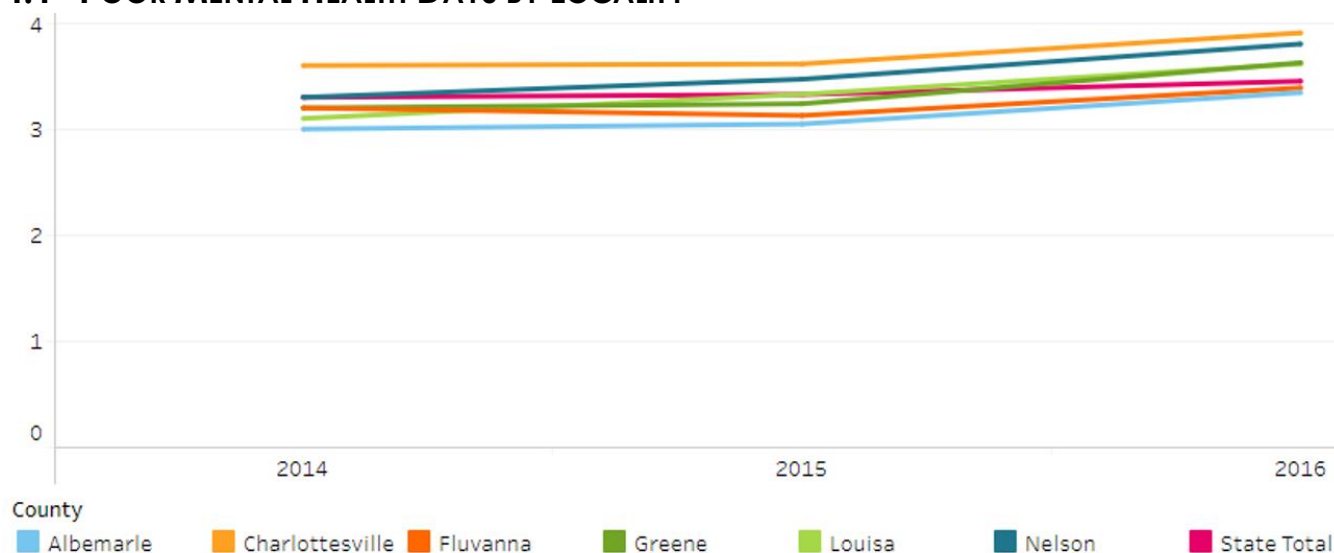
### 3.7 CHILD FOOD INSECURITY BY LOCALITY



**Child Food Insecurity**, by TJHD Locality, 2013-2016. Source: Map the Meal Gap, Feeding America, 2018.

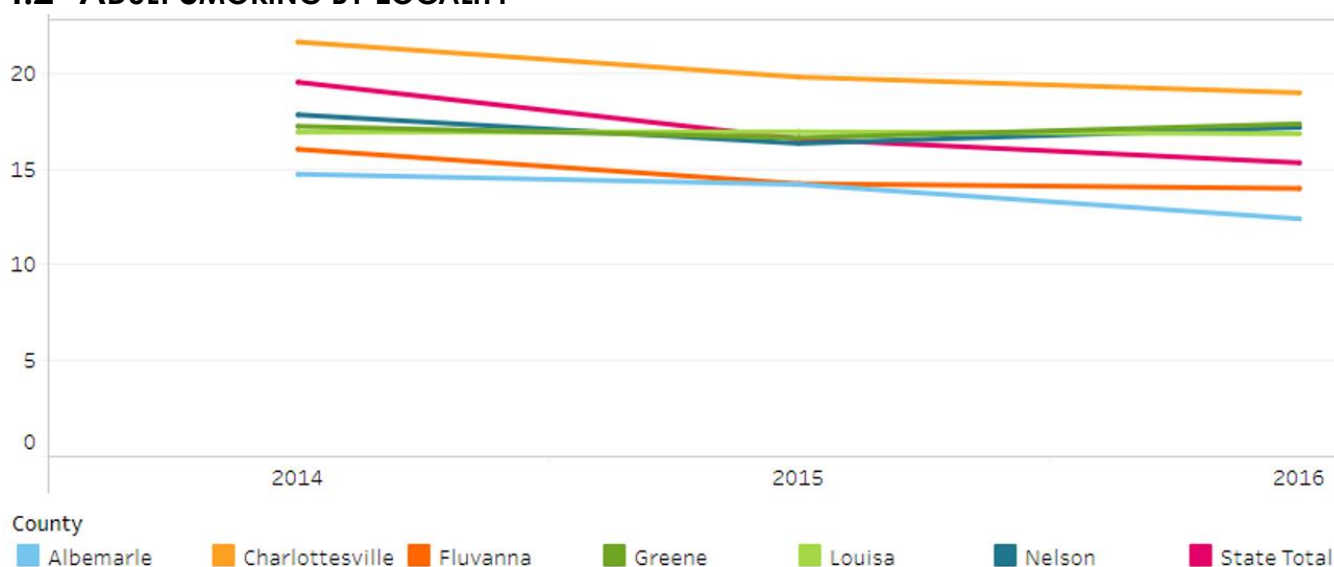
## 4 MAPP PRIORITY: ADDRESS MENTAL HEALTH AND SUBSTANCE USE

### 4.1 POOR MENTAL HEALTH DAYS BY LOCALITY



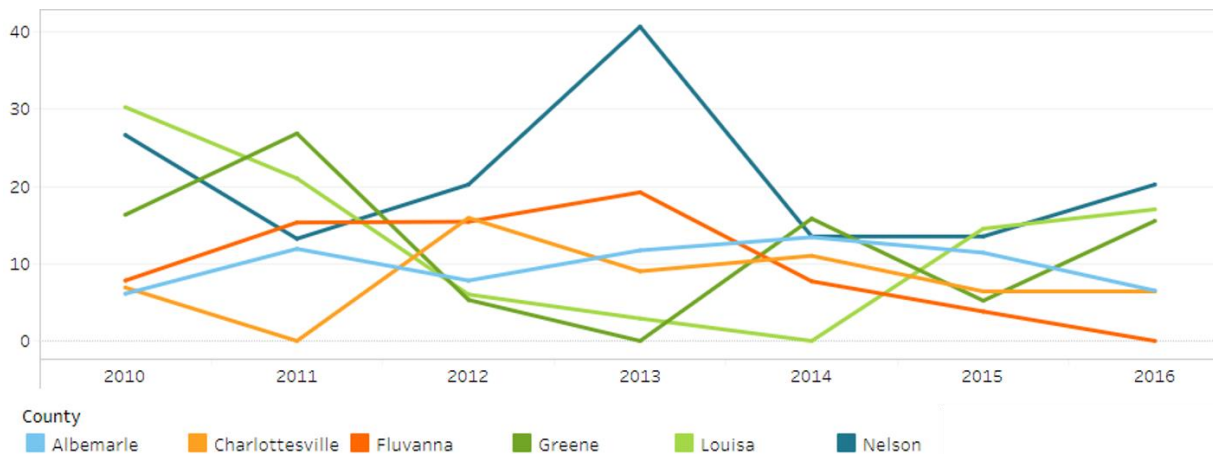
**Number of Poor Mental Health Days within Last 30 Days, by TJHD Locality, 2014-2016.** Source: County Health Rankings, 2018.

### 4.2 ADULT SMOKING BY LOCALITY



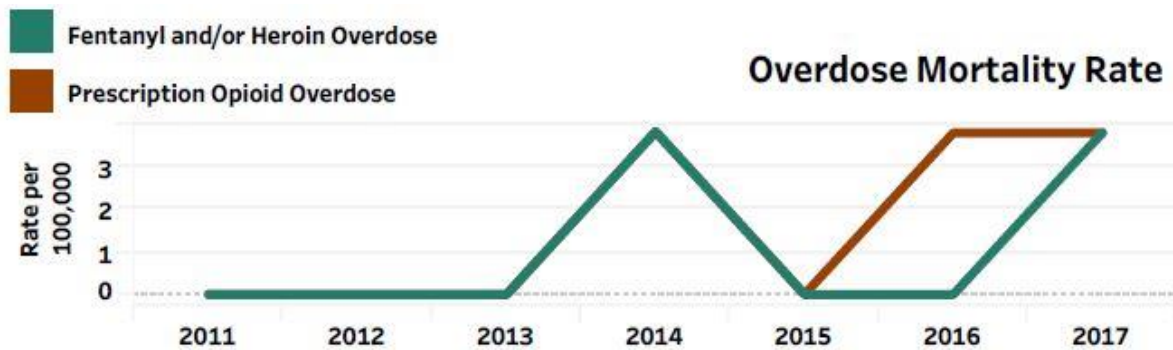
**Percent of Adults Smokers, by TJHD Locality, 2014-2016.** Source: County Health Rankings, 2018.

### 4.3 SUICIDE RATES BY LOCALITY

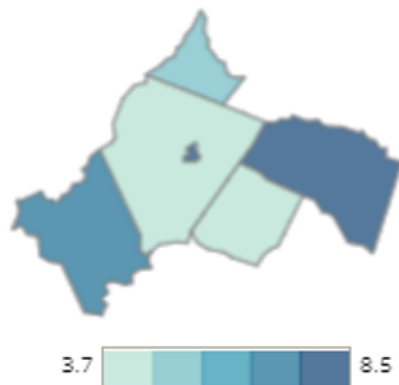


**Suicide Rates** (per 100,000 population), by TJHD Locality, 2010-2016. Source: Office of the Chief Medical Examiner, Virginia Department of Health, 2018.

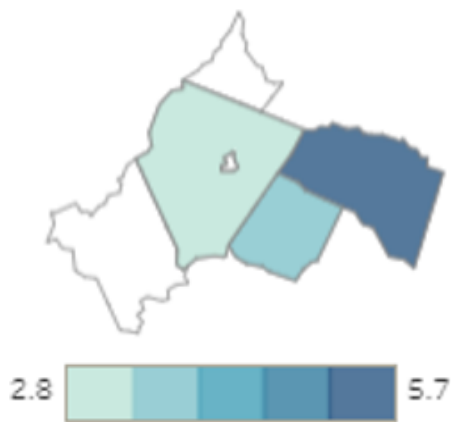
### 4.4 OPIOID OVERDOSES BY DISTRICT, LOCALITY, AND AGE



**TJHD Fentanyl and/or Heroin and Prescription Opioid Overdose Mortality Rates** (per 100,000 residents), Fluvanna County, 2011-2017. Source: Virginia Department of Health, Opioid Addiction Dashboard, 2018 (available online at [www.vdh.virginia.gov/data/opioid-overdose](http://www.vdh.virginia.gov/data/opioid-overdose)).



**TJHD Fentanyl and/or Heroin Overdose Mortality Rates** (per 100,000 residents), by TJHD Locality, 2017. Source: Virginia Department of Health, Opioid Addiction Dashboard, 2018 (available online at [www.vdh.virginia.gov/data/opioid-overdose](http://www.vdh.virginia.gov/data/opioid-overdose)).



**TJHD Prescription Opioids Overdose Mortality Rates** (per 100,000 residents), by TJHD Locality, 2017. Source: Virginia Department of Health, Opioid Addiction Dashboard, 2018 (available online at [www.vdh.virginia.gov/data/opioid-overdose](http://www.vdh.virginia.gov/data/opioid-overdose)).

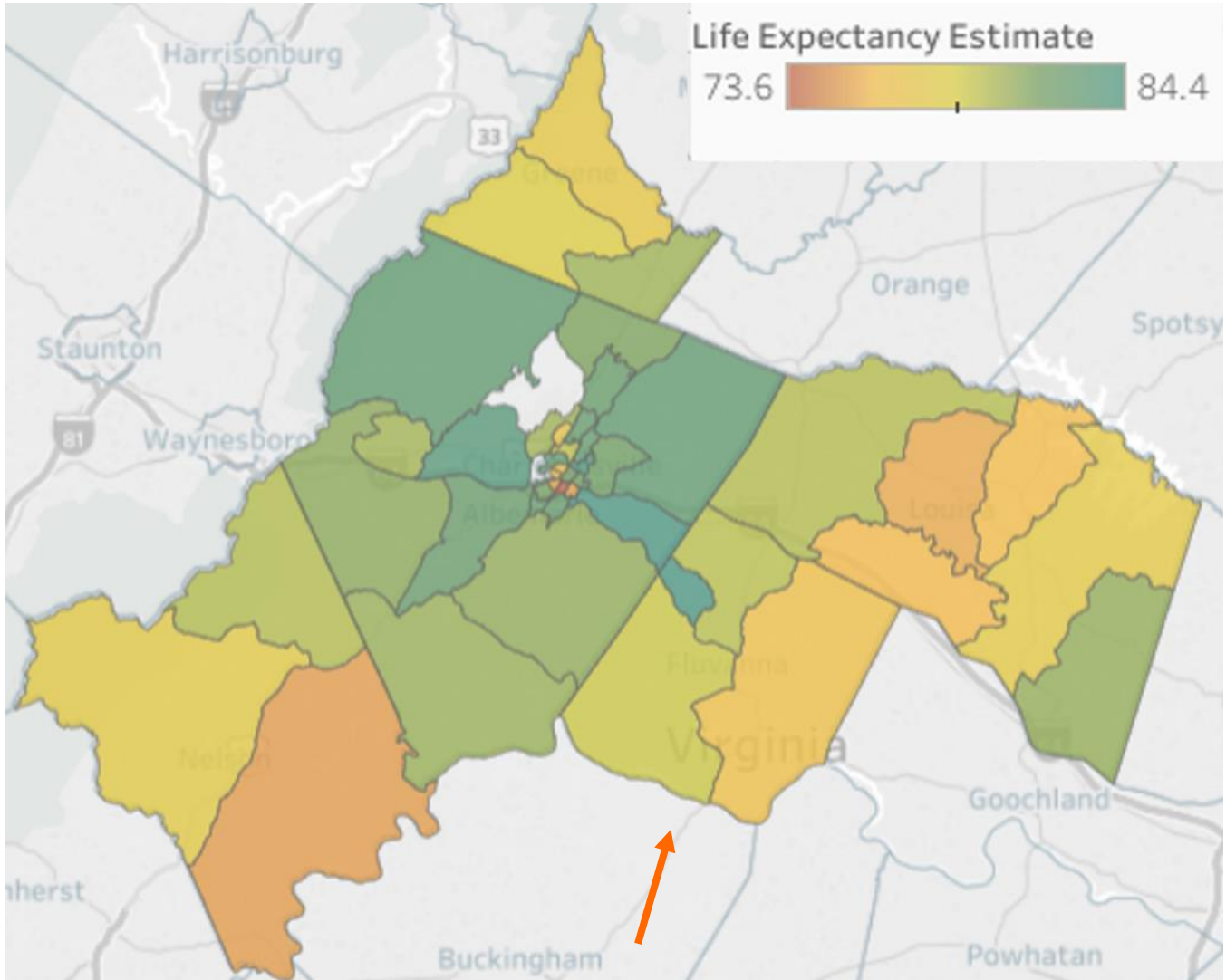
Age Group	Overdose Deaths		ED Visits for Overdose	
	Fentanyl and/or Heroin Overdose	Prescription Opioid Overdose	ED Heroin Overdose	ED Opioid Overdose
0–14	0.0	0.0	0.0	67.9
15–24	0.0	0.0	34.9	139.7
25–34	34.3	34.3	68.5	171.4
35–44	0.0	0.0	29.0	29.0
45–54	0.0	0.0	0.0	79.7
55–64	0.0	0.0	0.0	53.2
65+	0.0	0.0	0.0	19.6
All Ages	3.8	3.8	15.2	72.3

**Fluvanna Overdose Rate Summary by Age Groups** (per 100,000 residents), 2017. Source: Virginia Department of Health, Opioid Addiction Dashboard, 2018 (<http://www.vdh.virginia.gov/data/opioid-overdose>).

## 5 MAPP PRIORITY: REDUCE HEALTH DISPARITIES AND IMPROVE ACCESS TO CARE

---

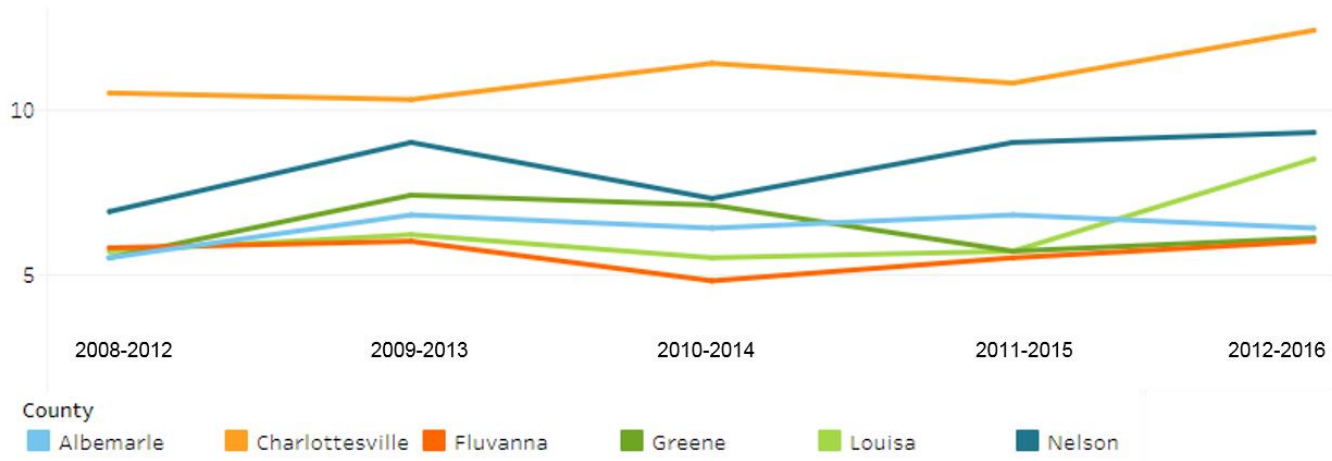
### 5.1 DISTRICT LIFE EXPECTANCY BY CENSUS TRACT



**Life Expectancy Estimates at Birth**, by TJHD Census Tract, 2008-2012. Source: Virginia Department of Health, Office of Vital Records, 2018 and U.S. Census Bureau, 2010 Population Counts, 2018.



## 5.2 POVERTY STATUS OF FAMILIES BY LOCALITY



Percent of Families below the Federal Poverty Level, by TJHD Locality, 2008-2016. Source: U.S. Census Bureau, American Community Survey 5-year Estimates, 2018.

## 5.3 ALICE COST OF LIVING BY LOCALITY

### ALICE HOUSEHOLD SURVIVAL BUDGET

	Single Adult	Married Couple	1 Adult, 1 School-Age Child	1 Adult, 1 Infant	2 Adult, 2 School-Age Children	2 Adults, 1 Infant, 1 Preschooler
Housing	\$722	\$1,010	\$1,010	\$1,010	\$1,171	\$1,171
Child Care	\$—	\$—	\$253	\$826	\$506	\$1,515
Food	\$168	\$381	\$316	\$265	\$637	\$555
Transportation	\$322	\$403	\$403	\$403	\$644	\$644
Health Care	\$196	\$392	\$461	\$345	\$726	\$726
Miscellaneous	\$180	\$277	\$292	\$365	\$427	\$556
Technology	\$55	\$75	\$55	\$55	\$75	\$75
Taxes	\$333	\$506	\$426	\$628	\$509	\$869
Monthly Total	\$1,976	\$3,044	\$3,216	\$3,897	\$4,695	\$6,111
Annual Total	\$23,712	\$36,528	\$38,592	\$46,764	\$56,340	\$73,332
Hourly Wage	\$11.86	\$18.26	\$19.30	\$23.38	\$28.17	\$36.67

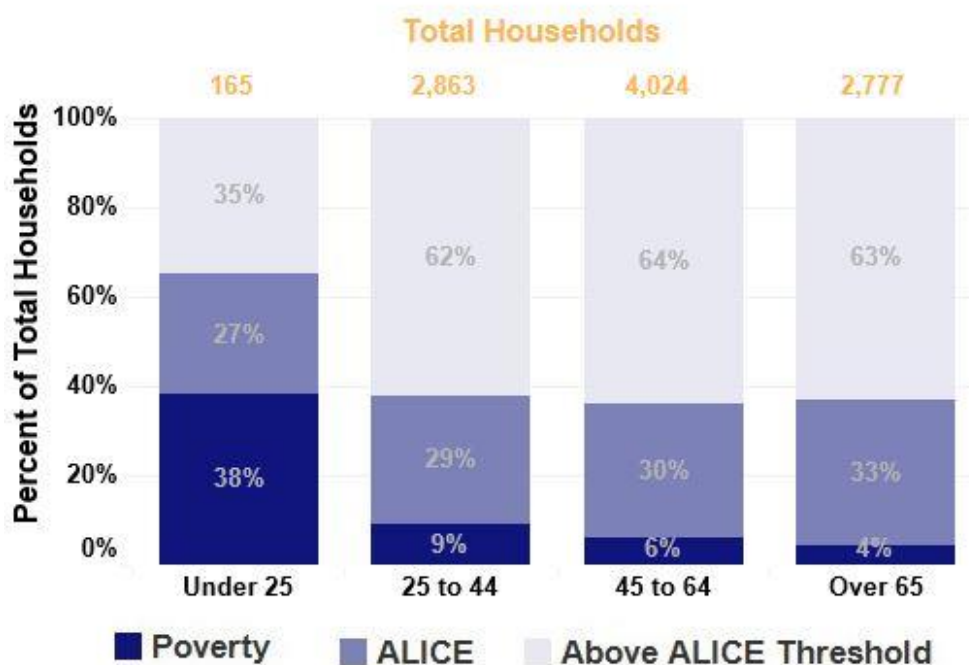
**ALICE Cost of Living Estimates**, Fluvanna County Survival Budget, 2016. (ALICE = Asset Limited, Income Restrained, Employed). Source: United Way, 2018 ALICE Report, 2019. Available online at <https://www.unitedwayalice.org/home>.

## ALICE HOUSEHOLD STABILITY BUDGET

	Single Adult	Married Couple	1 Adult, 1 School-Age Child	1 Adult, 1 Infant	2 Adult, 2 School-Age Children	2 Adults, 1 Infant, 1 Preschooler
Housing	\$1,263	\$1,464	\$1,464	\$1,464	\$1,360	\$1,360
Child Care	\$-	\$-	\$259	\$854	\$518	\$1,554
Food	\$325	\$700	\$611	\$490	\$1,230	\$1,060
Transportation	\$370	\$740	\$740	\$740	\$1,184	\$1,184
Health Care	\$259	\$588	\$948	\$948	\$1,155	\$1,155
Miscellaneous	\$233	\$362	\$413	\$460	\$558	\$644
Savings	\$233	\$362	\$413	\$460	\$558	\$644
Technology	\$109	\$129	\$109	\$109	\$129	\$129
Taxes	\$750	\$1,063	\$1,035	\$1,157	\$1,366	\$1,936
Monthly Total	\$3,542	\$5,408	\$5,992	\$6,682	\$8,058	\$9,666
Annual Total	\$42,504	\$64,896	\$71,904	\$80,184	\$96,696	\$115,992
Hourly Wage	\$21.25	\$32.45	\$35.95	\$40.09	\$48.35	\$58.00

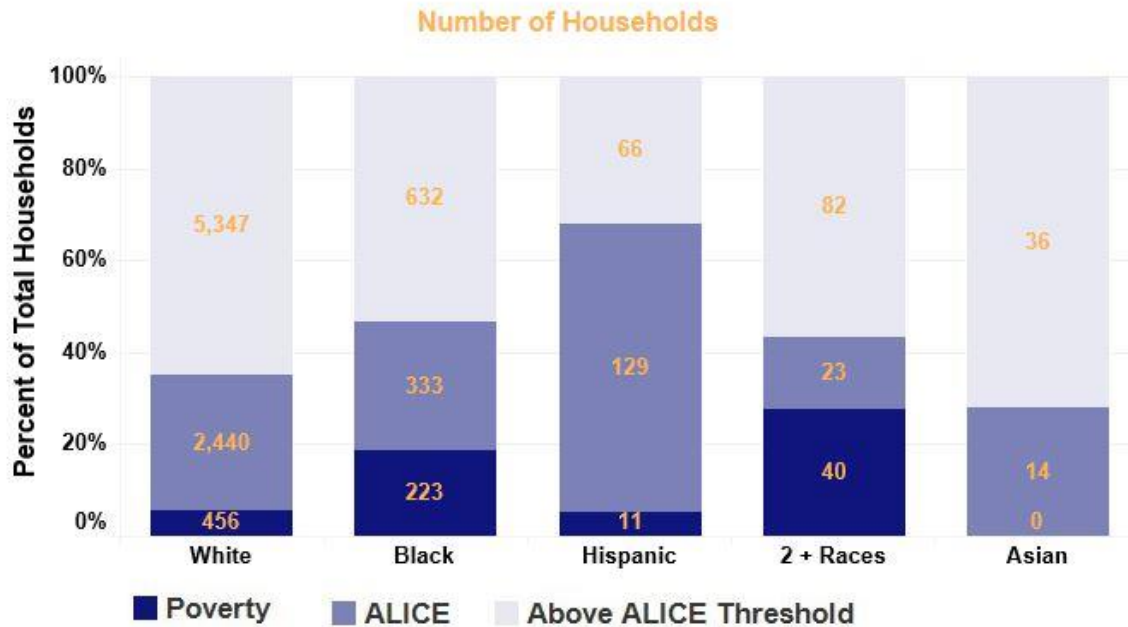
ALICE Cost of Living Estimates, Fluvanna County Stability Budget, 2016. Source: United Way, 2018 ALICE Report, 2019. Available online at <https://www.unitedwayalice.org/home>.

### Households by Age - Fluvanna, Virginia, 2016



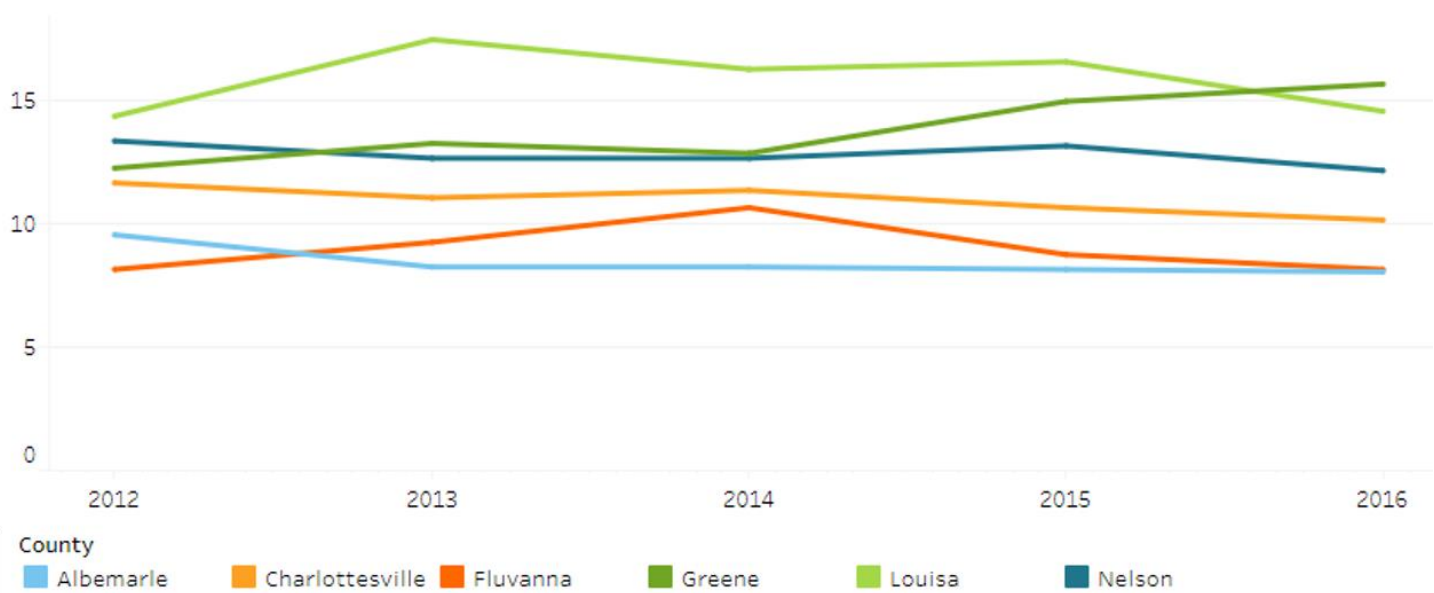
ALICE Cost of Living Estimates, Fluvanna County Households by Age, 2016. Source: United Way, 2018 ALICE Report, 2019.

## Households by Race/Ethnicity - Fluvanna, Virginia, 2016



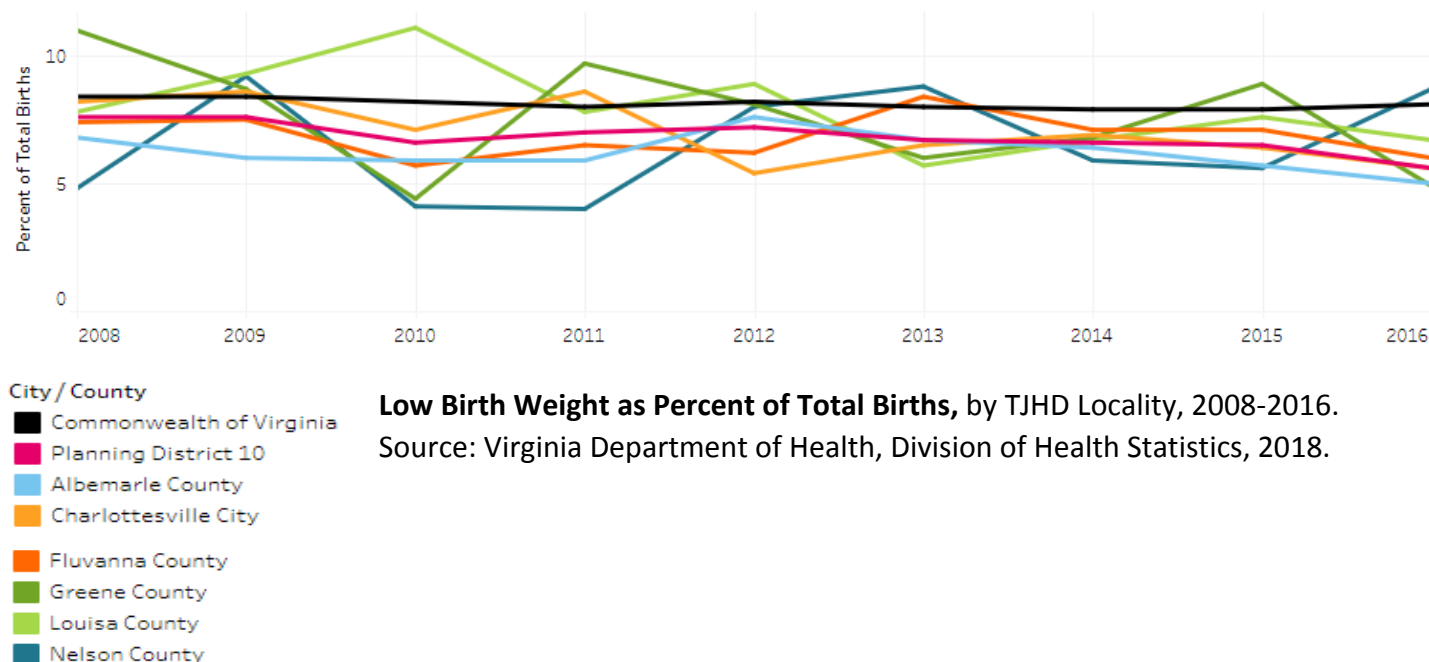
**ALICE Cost of Living Estimates**, Fluvanna County Households by Race & Ethnicity, 2016. Source: United Way, 2018 ALICE Report, 2019.

## 5.4 UNINSURED ADULTS BY LOCALITY



**Percent of Uninsured Adults**, by TJHD Locality, 2012-2016. Source: U.S. Census Bureau, American Community Survey 5-year Estimates, 2018.

## 5.5 LOW BIRTH WEIGHT BY LOCALITY AND RACE

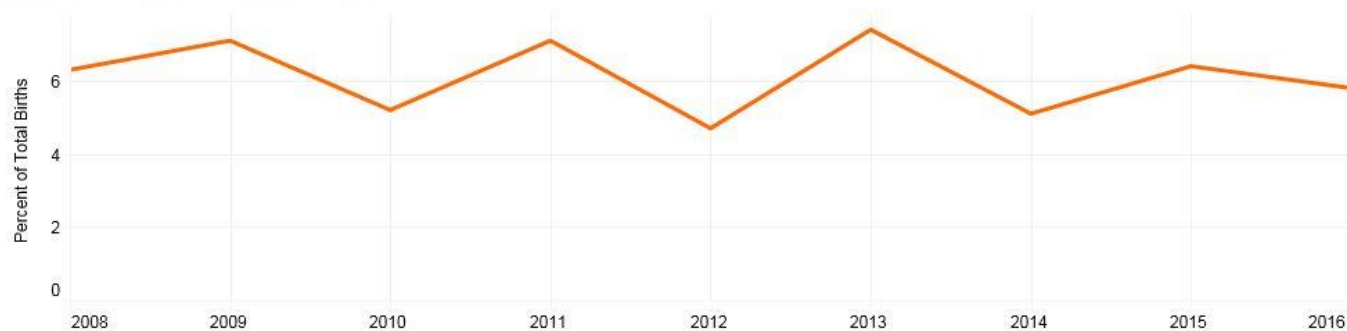


Black Low Weight Births Chart



**Percent Black Low Birth Weight, Fluvanna County, 2008-2016.** Source: Virginia Department of Health, Division of Health Statistics, 2018

White Low Weight Births Chart



**Percent White Low Birth Weight, Fluvanna County, 2008-2016.** Source: Virginia Department of Health, Division of Health Statistics, 2018.

Available online at <http://www.vdh.virginia.gov/data/chronic-disease/>.

Percent

4 13

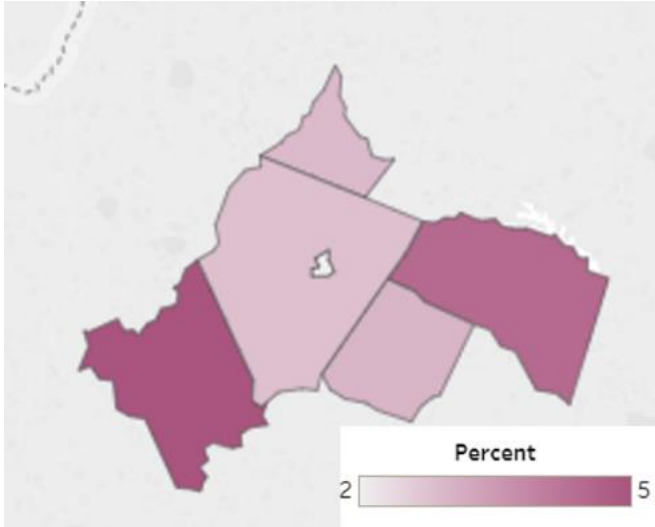
Percent

5 13

18

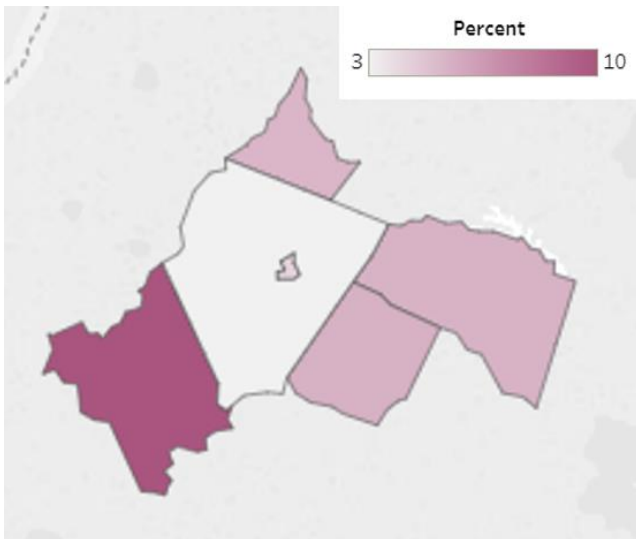


### 5.6.5 Heart Disease



**Percent Adult Heart Disease**, by TJHD Locality, 2014. Source: Behavioral Risk Factor Surveillance Survey (BRFSS) Small Area Estimates, 2018.

### 5.6.6 Heart Attacks

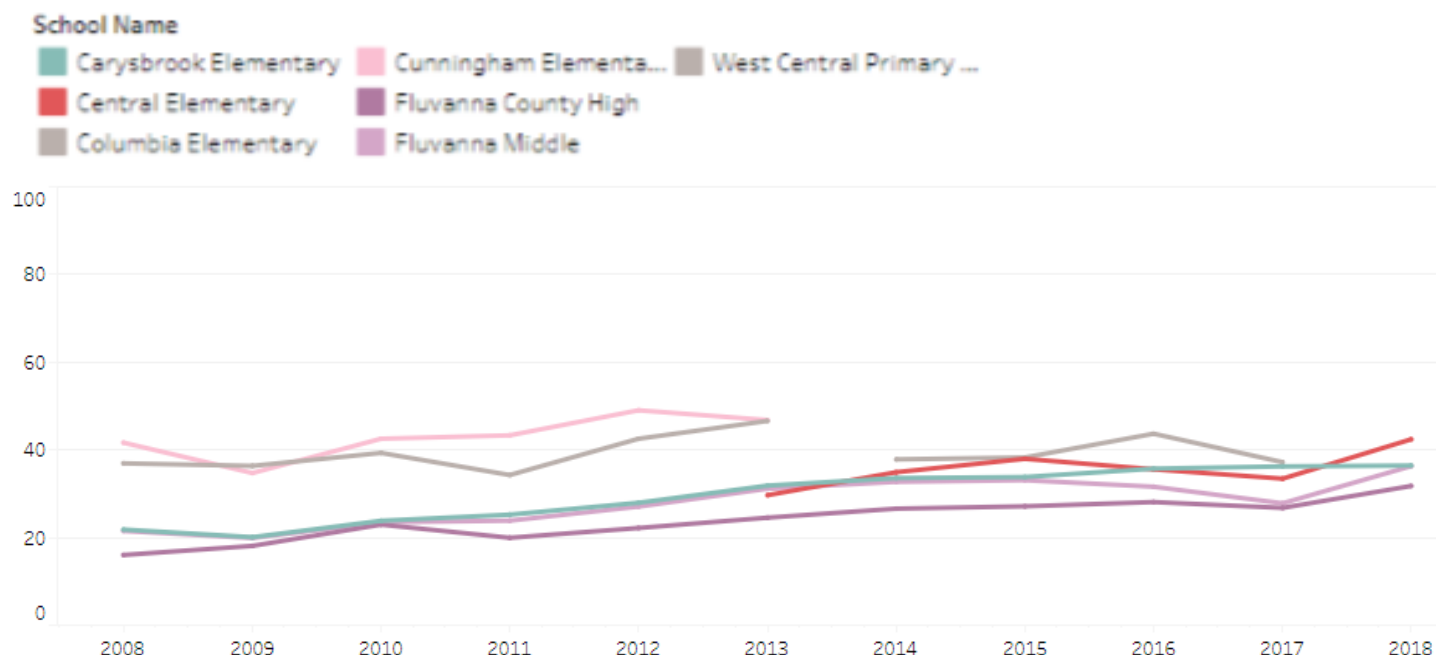


**Percent Adult Heart Attack**, by TJHD Locality, 2014. Source: Behavioral Risk Factor Surveillance Survey (BRFSS) Small Area Estimates, 2018.



## 6 MAPP PRIORITY: FOSTERING A HEALTHY AND CONNECTED COMMUNITY FOR ALL AGES

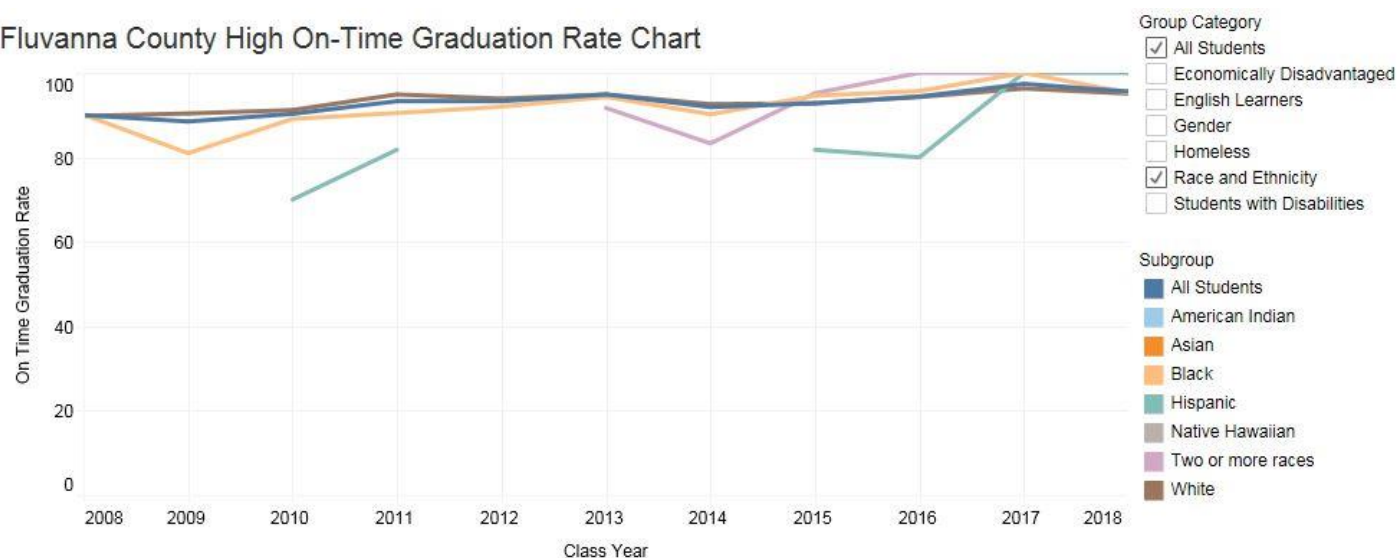
### 6.1 STUDENTS ELIGIBLE FOR FREE AND REDUCED LUNCH BY SCHOOL



**Percent Free and Reduced School Lunch, Fluvanna County Public Schools, 2008-2018.** Source: Virginia Department of Education, 2018.

### 6.2 ON-TIME GRADUATION RATES BY HIGH SCHOOL

Fluvanna County High On-Time Graduation Rate Chart



**On Time Graduation Rates, Fluvanna County High School, Fluvanna County, 2008-2018.** Source: Virginia Department of Education, 2018.

Visit <https://public.tableau.com/profile/thomas.jefferson.health.district#!> Under the “Foster a Healthy and Connected Community” dashboard to view graduation rates by high school and a variety of demographic categories (e.g. gender, race/ethnicity, economically disadvantaged, English learners, homeless, and students with disabilities).

### 6.3 THIRD GRADE ENGLISH READING SOL PASS RATES BY SCHOOL

Visit <https://public.tableau.com/profile/thomas.jefferson.health.district#!> under the “Foster a Healthy and Connected Community” dashboard to view pass rates by school division, school, and a variety of demographic categories (e.g. gender, race/ethnicity, economically disadvantaged, English learners, homeless, students with disabilities).

### 6.4 ADDITIONAL SCHOOL DATA

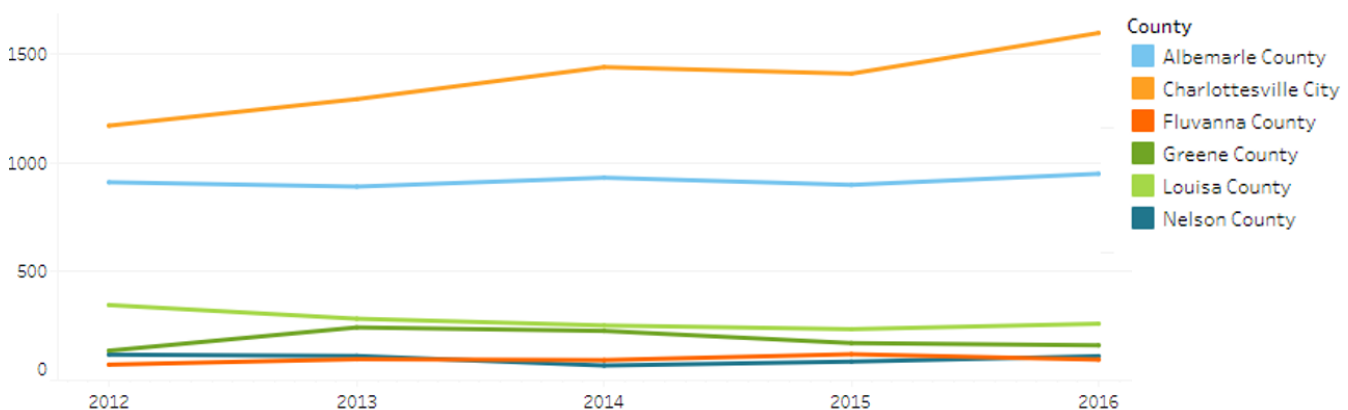
#### 6.4.1 School Membership Data

Visit <https://public.tableau.com/profile/thomas.jefferson.health.district#!> under “TJHD School Related MAPP Indicators and School Membership” to view a variety of school indicators including a map of elementary schools, school membership by race/ethnicity, grade, gender, and more.

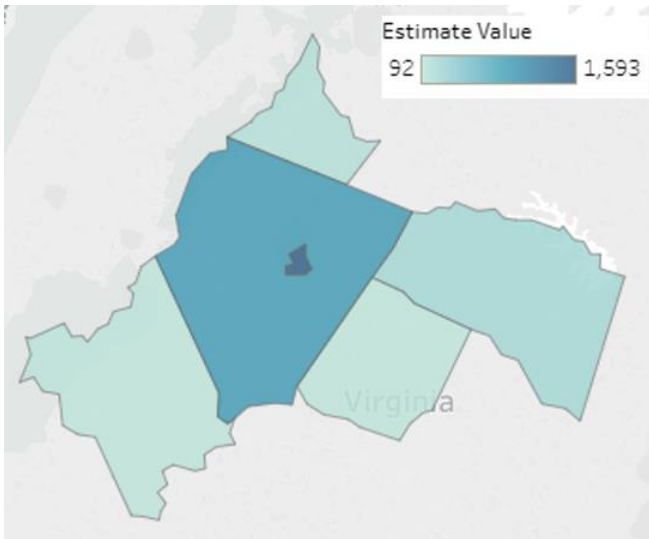
#### 6.4.2 Suspension Rates by School

Visit <https://public.tableau.com/profile/thomas.jefferson.health.district#!> under “Thomas Jefferson Health District – School Discipline Data” to view student suspension rates by school division, school type, school, discipline type, school year, and student race/ethnicity.

### 6.5 WORKERS WITH NO VEHICLES AVAILABLE BY LOCALITY



**Workers with No Vehicle Available**, by TJHD Locality, 2012-2016. Source: U.S. Census Bureau, American Community Survey 5-year Estimates, 2018.



**Workers with No Vehicle Available, TJHD Localities, 2012-2016.** Source: U.S. Census Bureau, American Community Survey 5-year Estimates, 2018.