

# Thomas Jefferson Health District County Data Profile

---

2019 MAPP2HEALTH COMMUNITY HEALTH ASSESSMENT

Last Updated: February 25, 2019  
THOMAS JEFFERSON HEALTH DISTRICT

# 1 TABLE OF CONTENTS

---

1.1	Who are we? ( <i>Demographics</i> ) .....	3
1.2	Population Estimates by Density, Gender, Race, Age, and Generation .....	3
1.3	Speakers of Languages Other than English .....	4
2	MAPP Priority: Promote Healthy Eating and Active Living .....	4
2.1	Adult Obesity by Locality .....	4
2.2	District Adult Obesity Map .....	5
2.3	District Child Obesity Map .....	6
2.4	Adult Physical Inactivity by Locality .....	7
2.5	Access to Exercise Opportunities by Locality .....	7
2.6	Food Insecurity by Locality .....	8
2.7	Child Food Insecurity by Locality .....	8
3	MAPP Priority: Address Mental Health and Substance Use .....	9
3.1	Poor Mental Health Days by Locality .....	9
3.2	Adult Smoking by Locality .....	9
3.3	Suicide Rates by Locality .....	10
3.4	Opioid Overdoses by District, Locality, and Age .....	10
4	MAPP Priority: Reduce Health Disparities and Improve Access to Care .....	12
4.1	District Life Expectancy by Census Tract .....	12
4.2	Poverty Status of Families by Locality .....	13
4.3	Uninsured Adults by Locality .....	13
4.4	Low Birth Weight by Locality and Race .....	14
4.5	Chronic Disease by Locality .....	15
4.5.1	COPD .....	15
4.5.2	Asthma .....	15
4.5.3	Prediabetes .....	15
4.5.4	Diabetes .....	15
4.5.5	Heart Disease .....	16
4.5.6	Heart Attacks .....	16
5	MAPP Priority: Fostering A Healthy and Connected Community for all Ages .....	17
5.1	Students Eligible for Free and Reduced Lunch by School .....	17
5.2	On-Time Graduation Rates by High School .....	17

5.3	Third Grade English Reading SOL Pass Rates by School.....	17
5.4	Additional School Data.....	17
5.4.1	School Membership Data .....	17
5.4.2	Suspension Rates by School.....	17
5.5	Workers with No Vehicles Available by Locality .....	18

WORKING DRAFT

*Note:* to review MAPP priority indicators online, visit the Thomas Jefferson Health District’s Tableau Public page: <https://public.tableau.com/profile/thomas.jefferson.health.district#!/>. Demographics, opioid addition and chronic disease data can be viewed at the Virginia Department of Health’s Data Portal: <http://www.vdh.virginia.gov/data/>.

For questions about the data, or to request a copy of the MAPP Data Dictionary for detailed information on each priority indicator, contact TJHD’s Data Analyst, Guleer Shahab, at 434-422-3214

# Thomas Jefferson Health District (TJHD) Data Profile

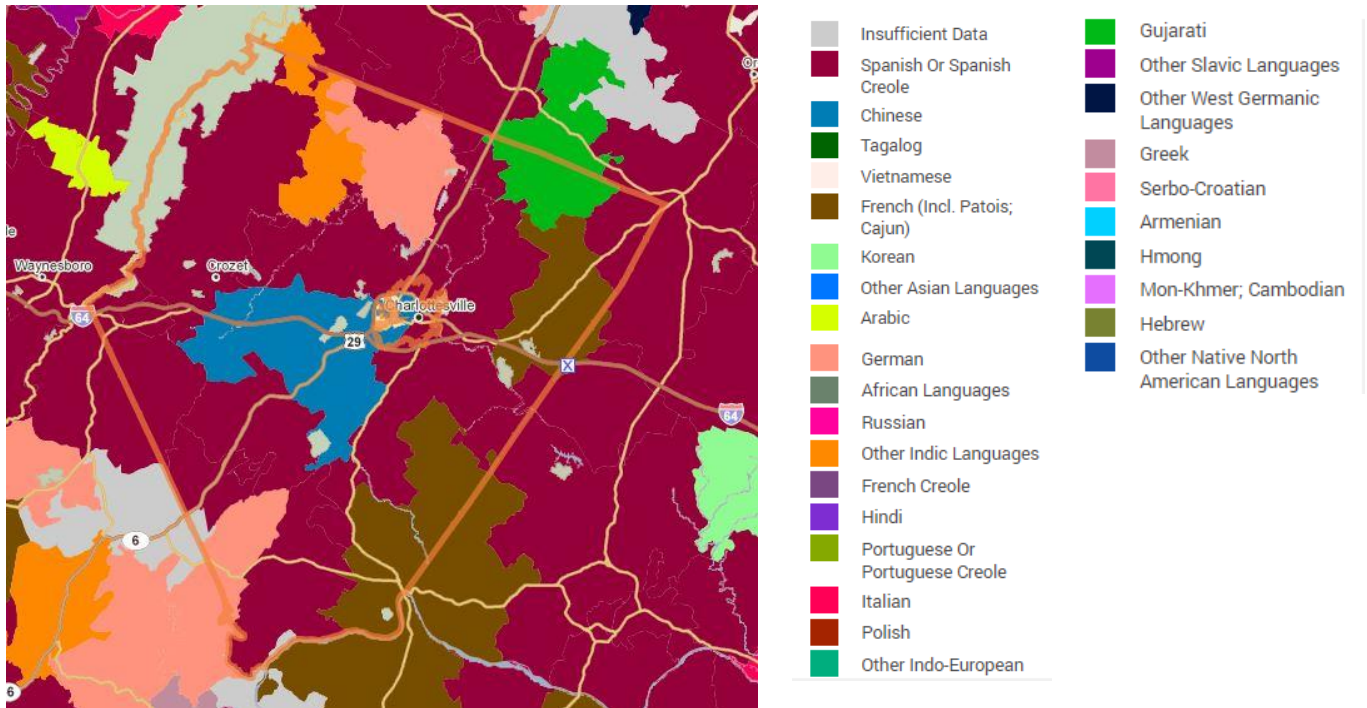
## 1.1 WHO ARE WE? (DEMOGRAPHICS)

## 1.2 POPULATION ESTIMATES BY DENSITY, GENDER, RACE, AGE, AND GENERATION



**TJHD Demographic Profile**, Population Estimates by Total, Density, Gender, Race, Age, and Generation, 2016. Source: Virginia Department of Health Data Portal, 2019. Table available at <http://www.vdh.virginia.gov/data/demographics/>

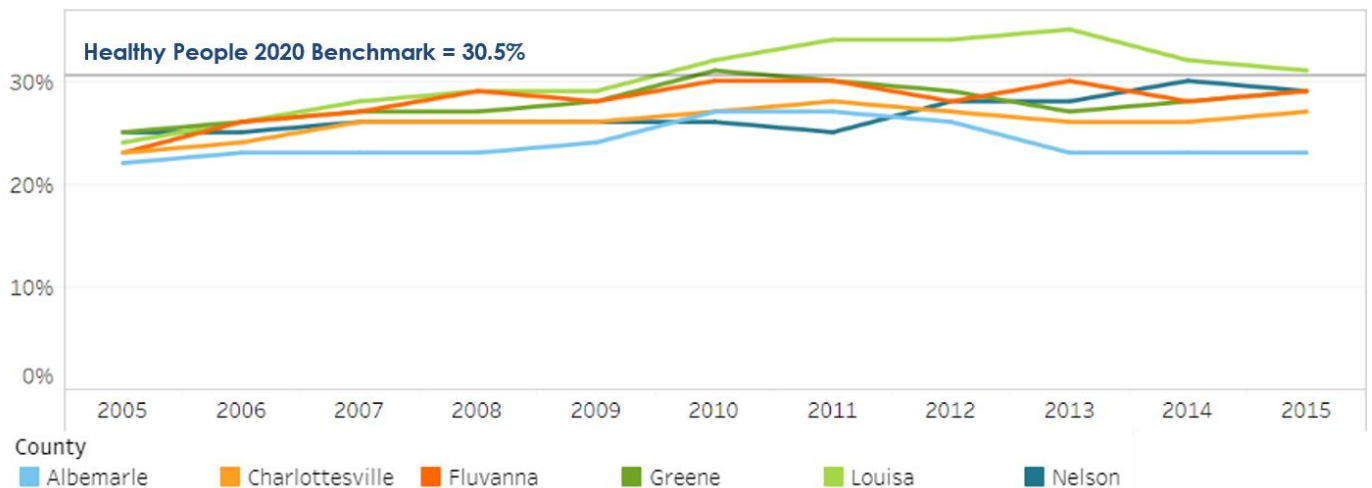
### 1.3 SPEAKERS OF LANGUAGES OTHER THAN ENGLISH



**Predominant Language, not including English, Spoken at Home, Albemarle County and Charlottesville City, 2011-2015.** Source: Policy Map, 2019. Available at <https://www.policymap.com/maps>

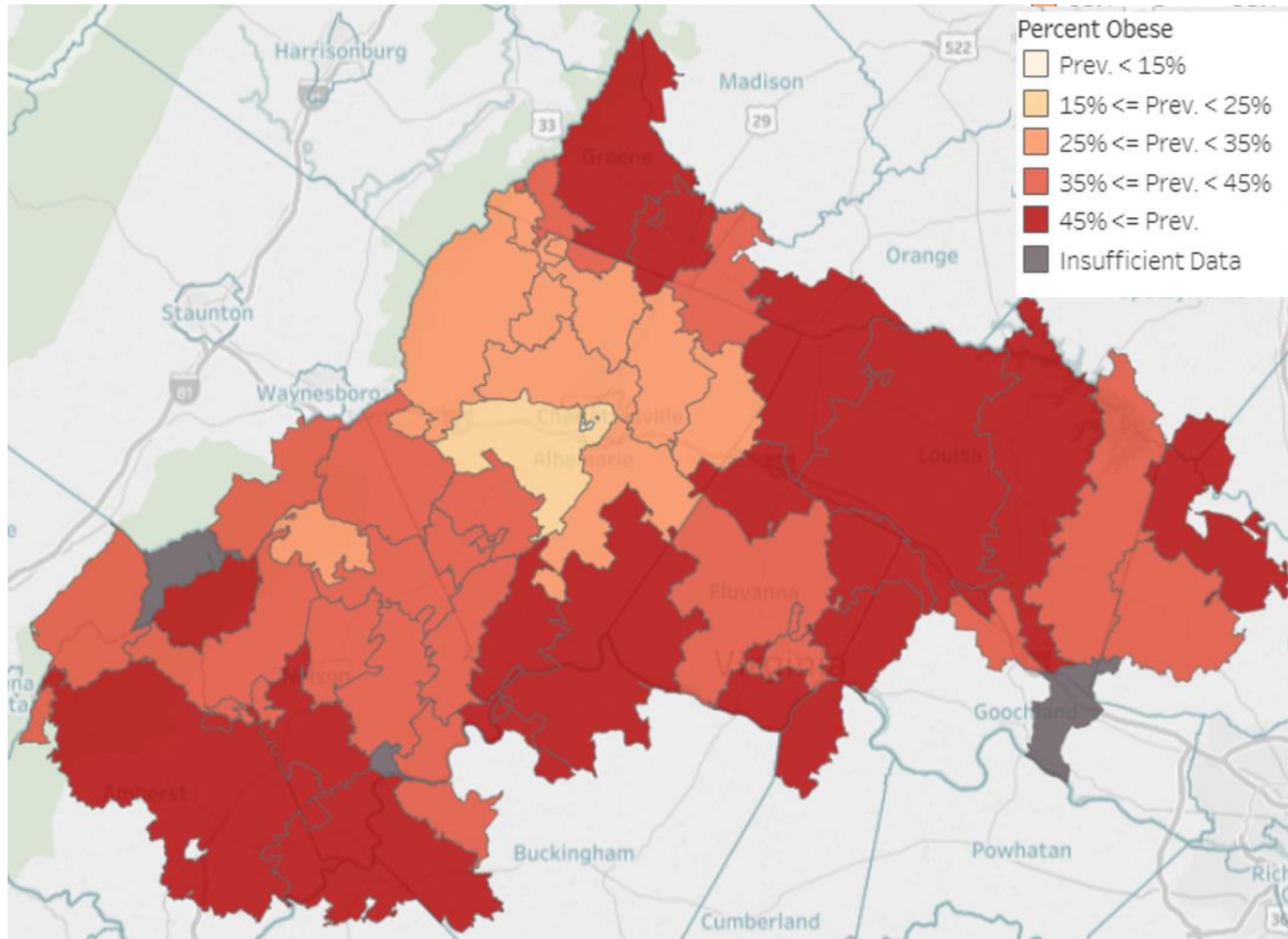
## 2 MAPP PRIORITY: PROMOTE HEALTHY EATING AND ACTIVE LIVING

### 2.1 ADULT OBESITY BY LOCALITY



**Percent of Obese Adults, by TJHD Locality, 2005-2015.** Source: Robert Wood Johnson Foundation (RWJF), County Health Rankings, 2018.

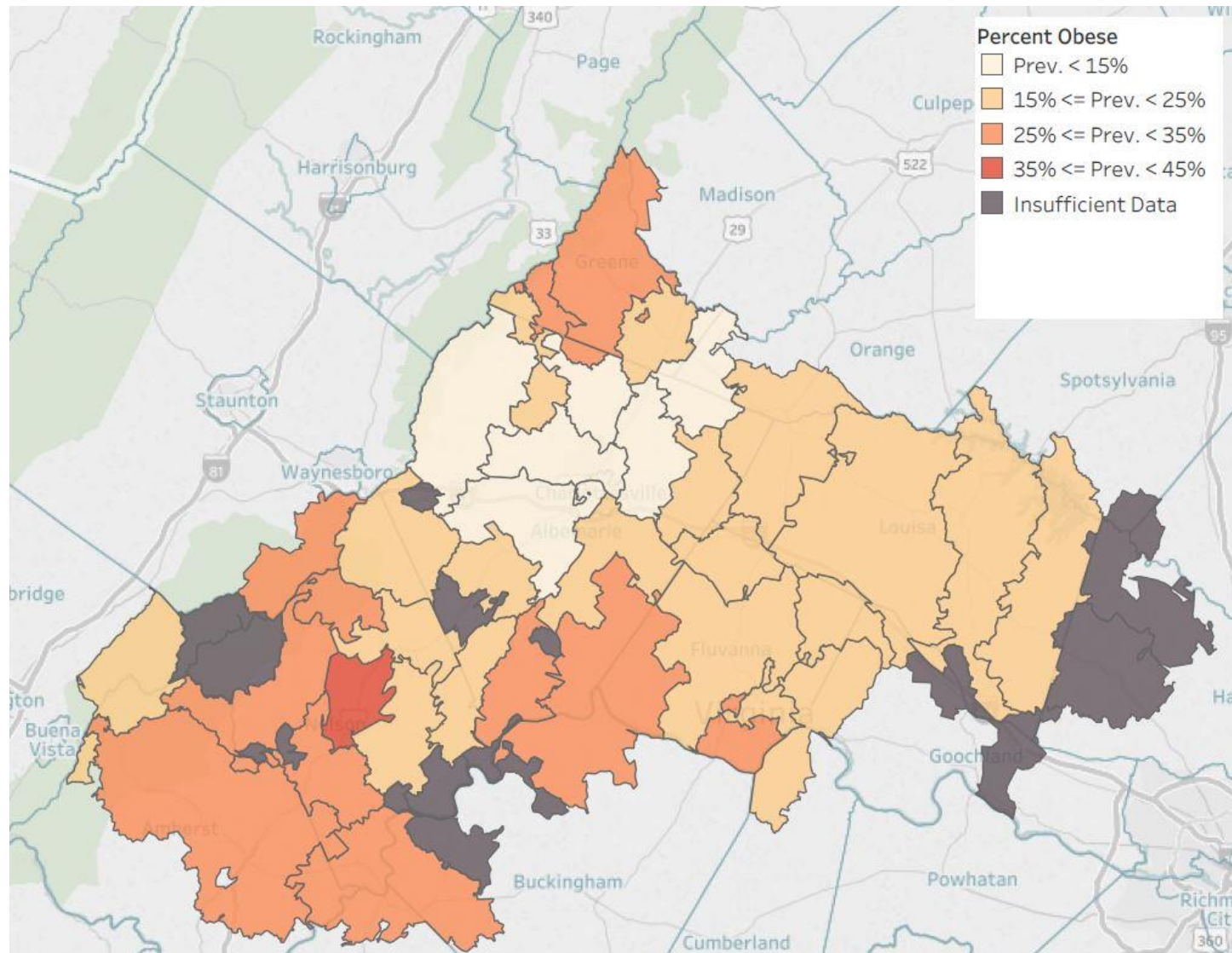
## 2.2 DISTRICT ADULT OBESITY MAP



**Percent of Obese Adults**, by TJHD Zip Code Tabulation Area, 2016. Source: Translational Health Research Institute of Virginia (UVA Clinical Data Repository), 2017.

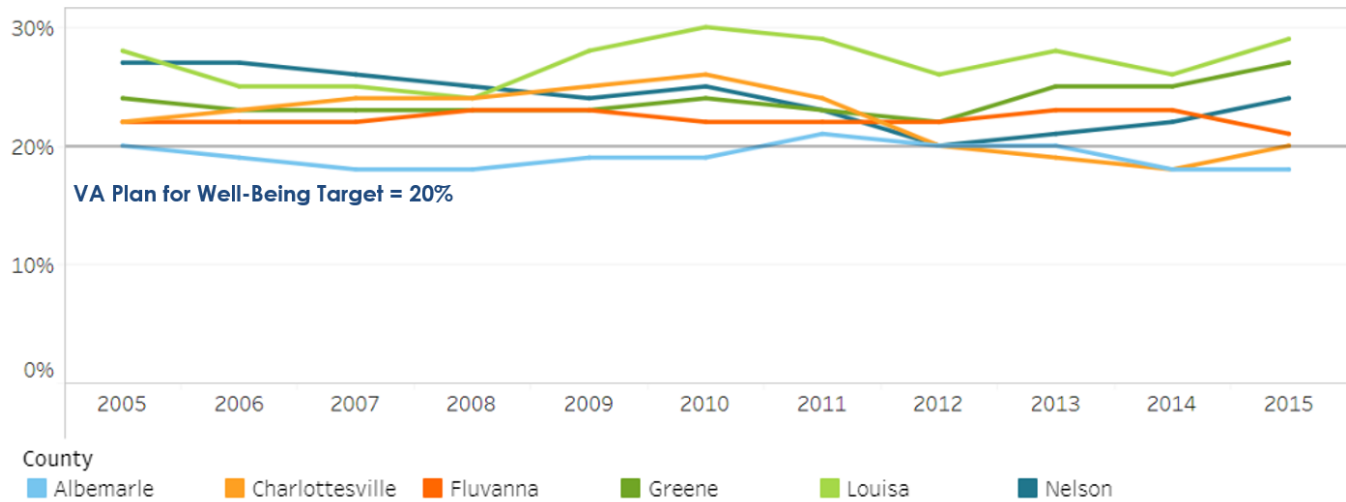


## 2.3 DISTRICT CHILD OBESITY MAP



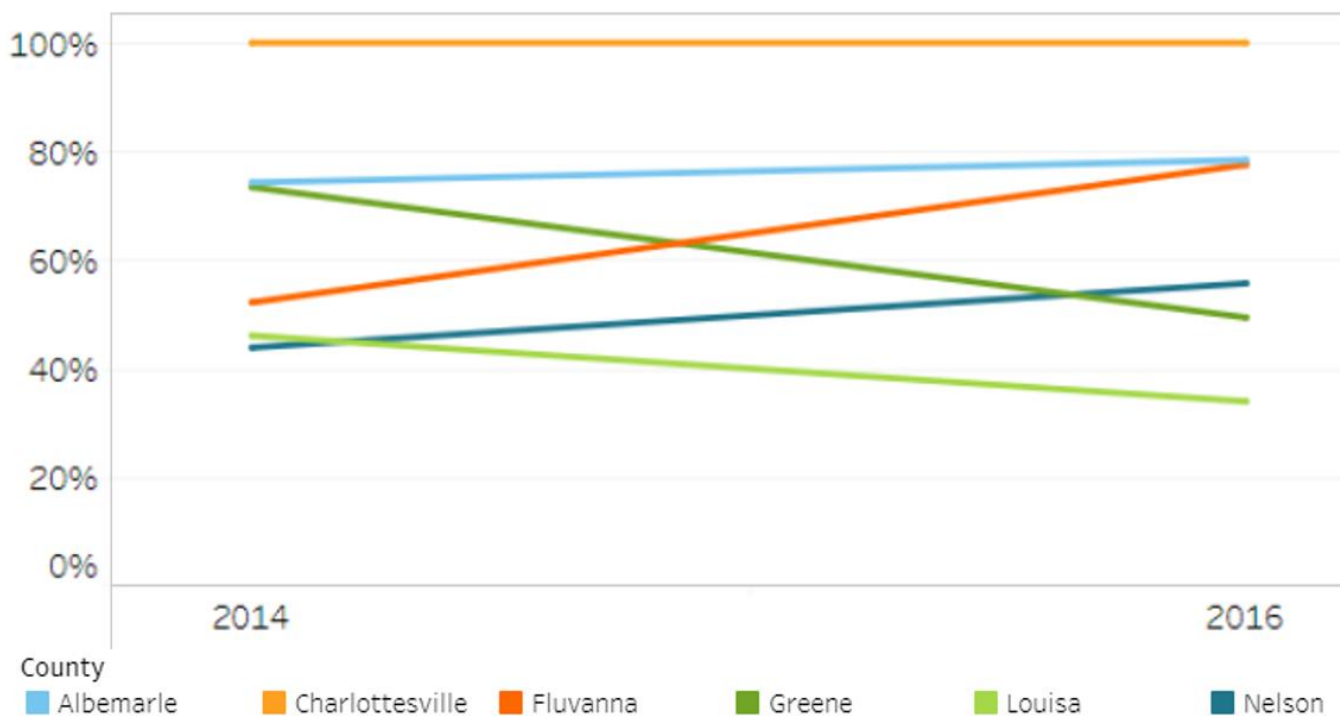
**Percent of Obese Children**, by TJHD Zip Code Tabulation Area, 2016. Source: Translational Health Research Institute of Virginia (UVA Clinical Data Repository), 2017.

## 2.4 ADULT PHYSICAL INACTIVITY BY LOCALITY



**Percent of Adult Physical Inactivity, by TJHD Locality, 2005-2015.** Source: County Health Rankings, 2018.

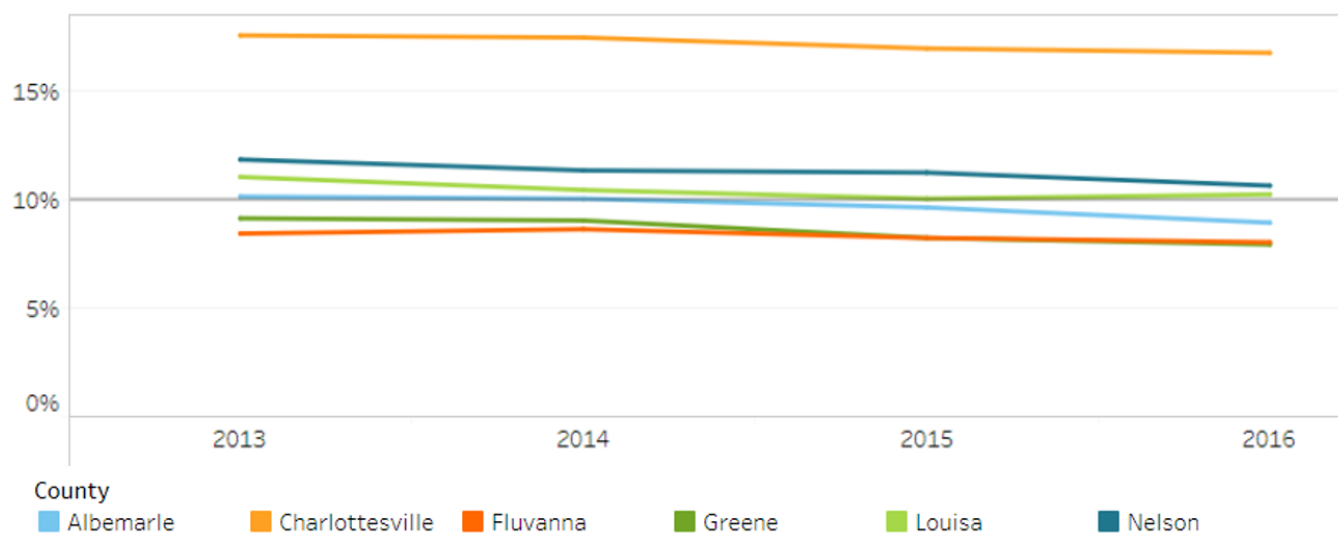
## 2.5 ACCESS TO EXERCISE OPPORTUNITIES BY LOCALITY



**Percent Access to Exercise Opportunities, by TJHD Locality, 2014 & 2016.** Source: County Health Rankings, 2018.

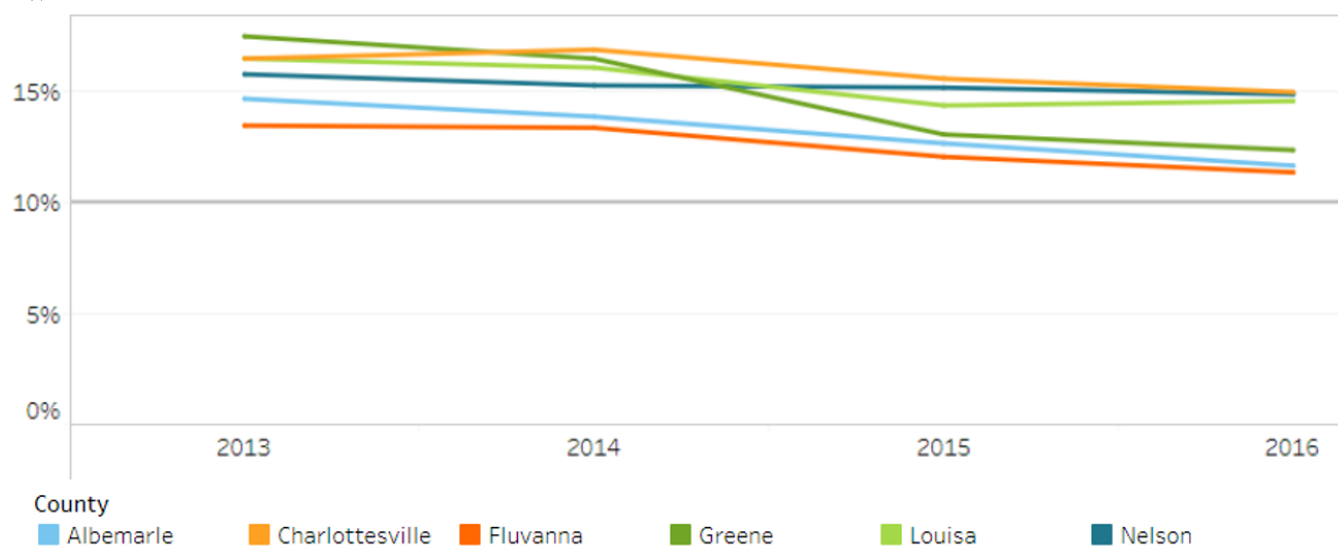


## 2.6 FOOD INSECURITY BY LOCALITY



**Food Insecurity**, by TJHD Locality, 2013-2016. Source: Map the Meal Gap, Feeding America, 2018.

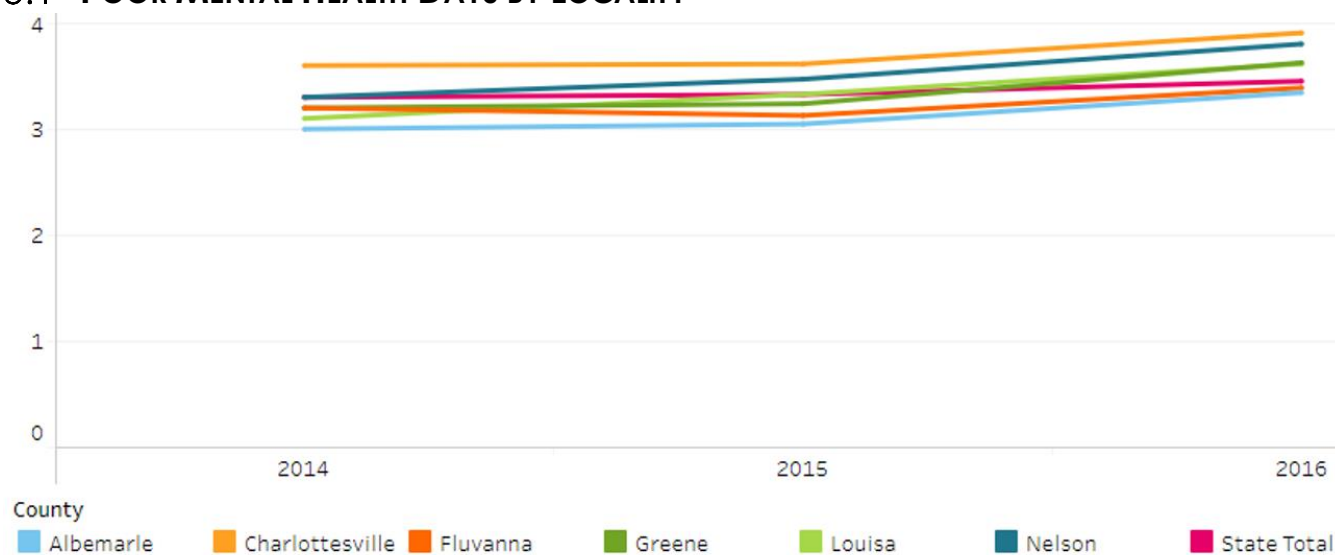
## 2.7 CHILD FOOD INSECURITY BY LOCALITY



**Child Food Insecurity**, by TJHD Locality, 2013-2016. Source: Map the Meal Gap, Feeding America, 2018.

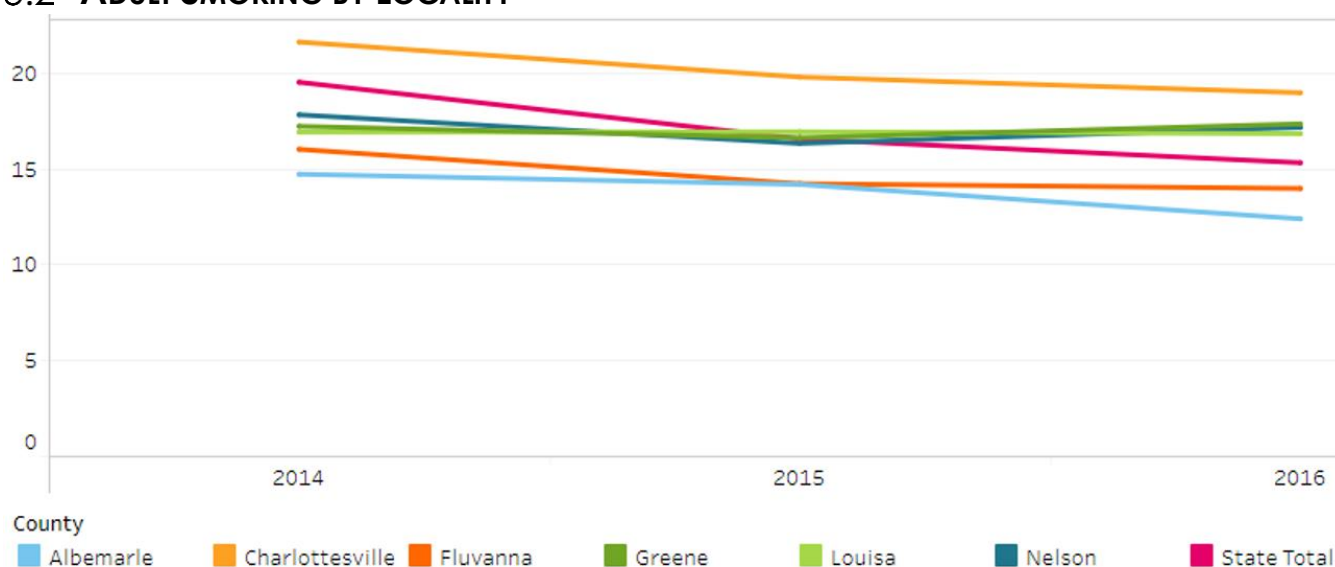
### 3 MAPP PRIORITY: ADDRESS MENTAL HEALTH AND SUBSTANCE USE

#### 3.1 POOR MENTAL HEALTH DAYS BY LOCALITY



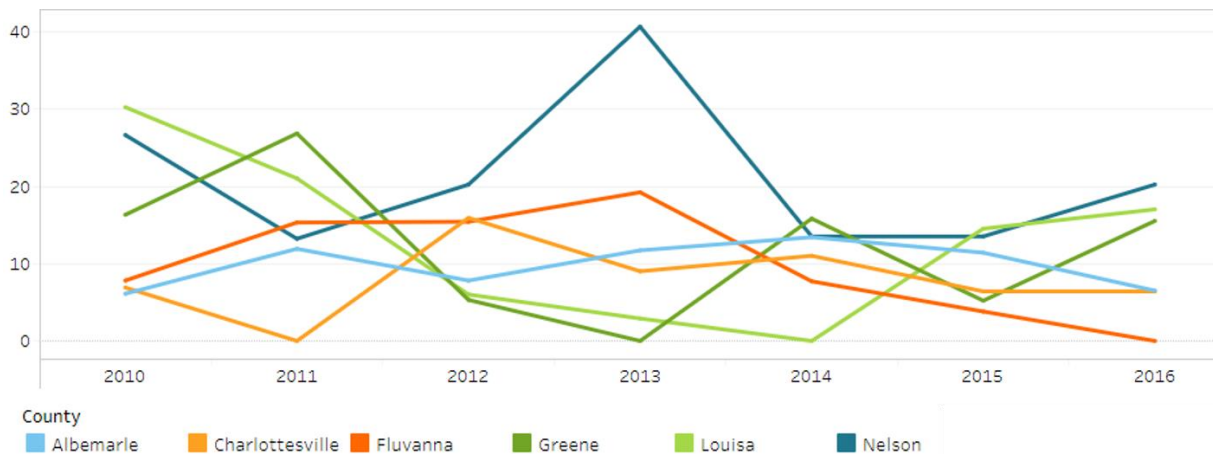
**Number of Poor Mental Health Days within Last 30 Days, by TJHD Locality, 2014-2016.** Source: County Health Rankings, 2018.

#### 3.2 ADULT SMOKING BY LOCALITY



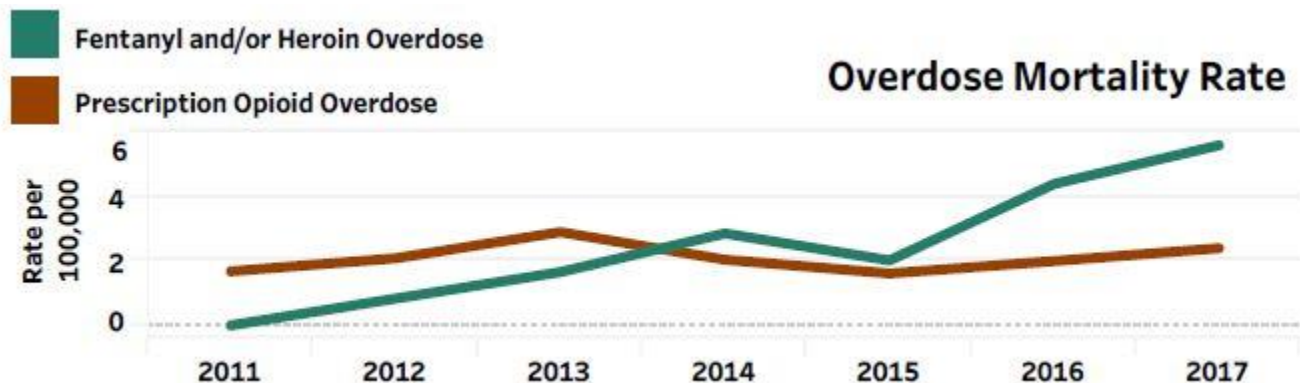
**Percent of Adults Smokers, by TJHD Locality, 2014-2016.** Source: County Health Rankings, 2018.

### 3.3 SUICIDE RATES BY LOCALITY

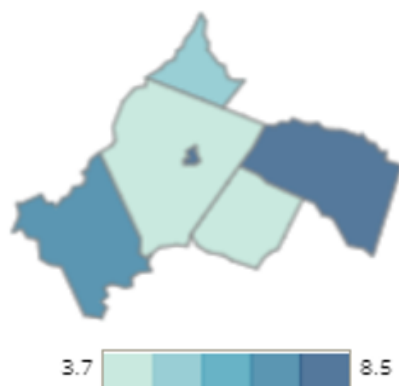


**Suicide Rates** (per 100,000 population), by TJHD Locality, 2010-2016. Source: Office of the Chief Medical Examiner, Virginia Department of Health, 2018.

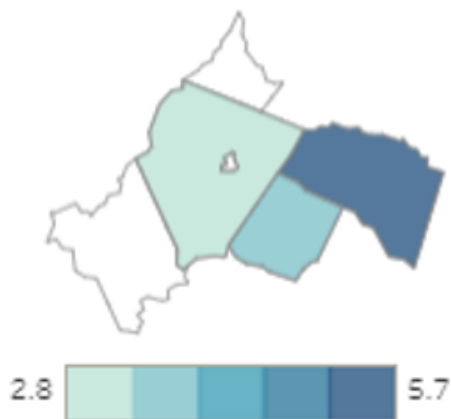
### 3.4 OPIOID OVERDOSES BY DISTRICT, LOCALITY, AND AGE



**TJHD Fentanyl and/or Heroin and Prescription Opioid Overdose Mortality Rates** (per 100,000 residents), TJHD, 2011-2017. Source: Virginia Department of Health, Opioid Addiction Dashboard, 2018 (available online at [www.vdh.virginia.gov/data/opioid-overdose](http://www.vdh.virginia.gov/data/opioid-overdose)).



**TJHD Fentanyl and/or Heroin Overdose Mortality Rates** (per 100,000 residents), by TJHD Locality, 2017. Source: Virginia Department of Health, Opioid Addiction Dashboard, 2018 (available online at [www.vdh.virginia.gov/data/opioid-overdose](http://www.vdh.virginia.gov/data/opioid-overdose)).



**TJHD Prescription Opioids Overdose Mortality Rates** (per 100,000 residents), by TJHD Locality, 2017. Source: Virginia Department of Health, Opioid Addiction Dashboard, 2018 (available online at [www.vdh.virginia.gov/data/opioid-overdose](http://www.vdh.virginia.gov/data/opioid-overdose)).

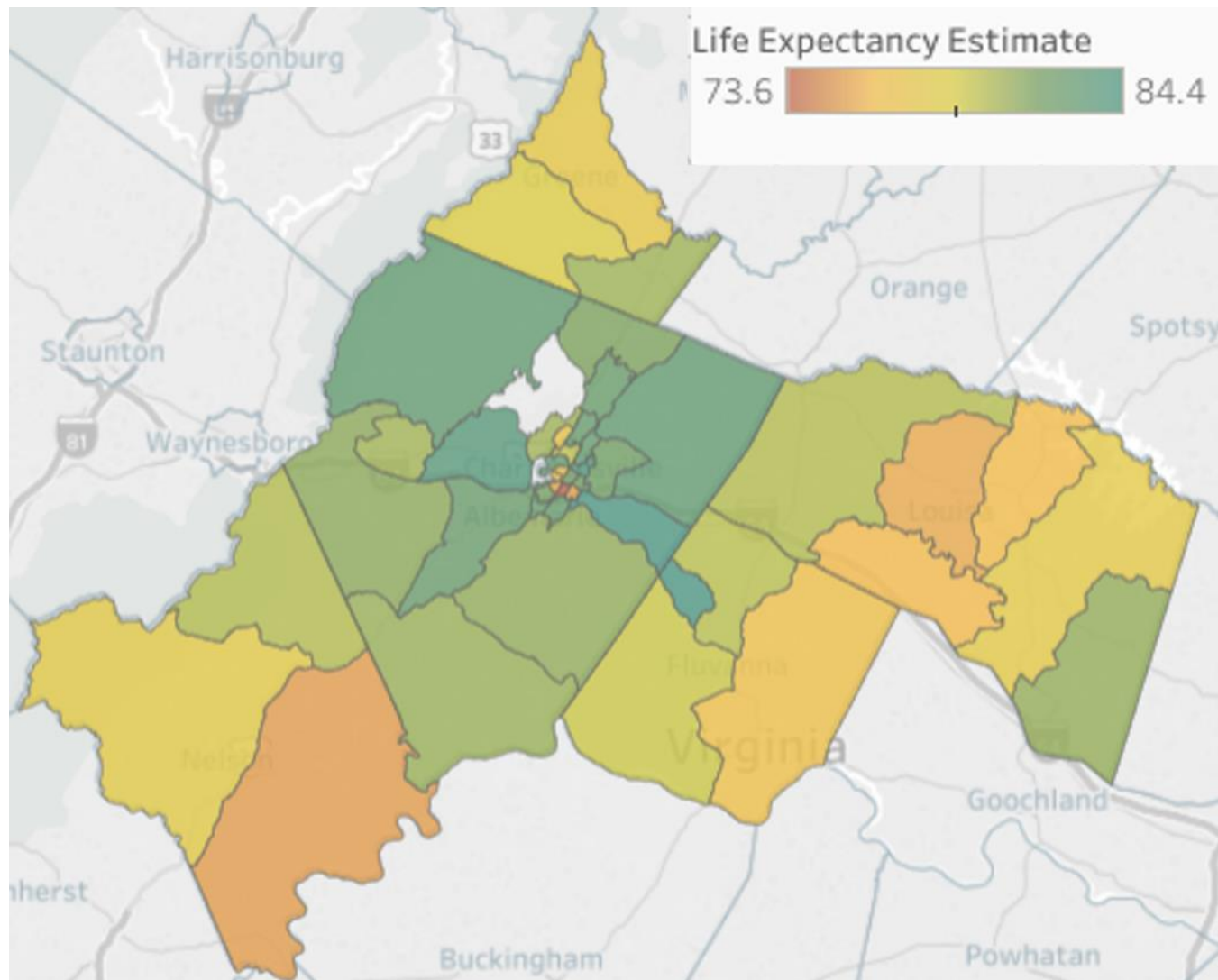
<b>Overdose Deaths</b>			<b>ED Visits for Overdose</b>	
<b>Age Group</b>	<b>Fentanyl and/or Heroin Overdose</b>	<b>Prescription Opioid Overdose</b>	<b>ED Heroin Overdose</b>	<b>ED Opioid Overdose</b>
<b>0–14</b>	0.0	0.0	0.0	51.5
<b>15–24</b>	2.7	2.7	21.3	159.9
<b>25–34</b>	17.7	8.8	67.7	161.9
<b>35–44</b>	17.3	0.0	44.9	148.4
<b>45–54</b>	3.1	0.0	21.7	121.1
<b>55–64</b>	3.0	3.0	5.9	82.7
<b>65+</b>	0.0	2.4	4.7	42.7
<b>All Ages</b>	5.6	2.4	22.0	105.8

**TJHD Overdose Rate Summary by Age Groups** (per 100,000 residents), 2017. Source: Virginia Department of Health, Opioid Addiction Dashboard, 2018 (<http://www.vdh.virginia.gov/data/opioid-overdose>).

## 4 MAPP PRIORITY: REDUCE HEALTH DISPARITIES AND IMPROVE ACCESS TO CARE

---

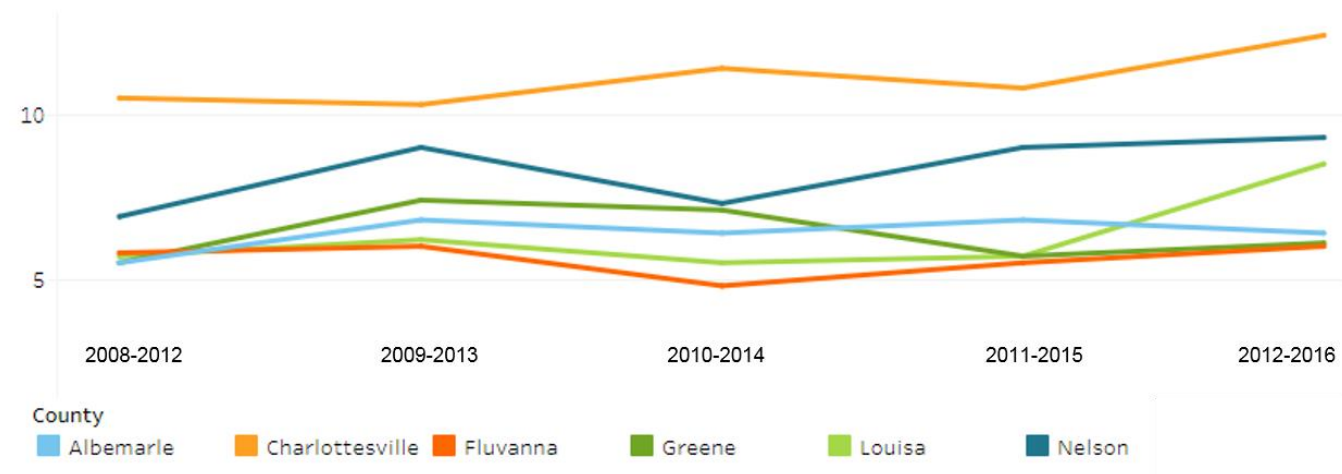
### 4.1 DISTRICT LIFE EXPECTANCY BY CENSUS TRACT



**Life Expectancy Estimates at Birth**, by TJHD Census Tract, 2008-2012. Source: Virginia Department of Health, Office of Vital Records, 2018 and U.S. Census Bureau, 2010 Population Counts, 2018.

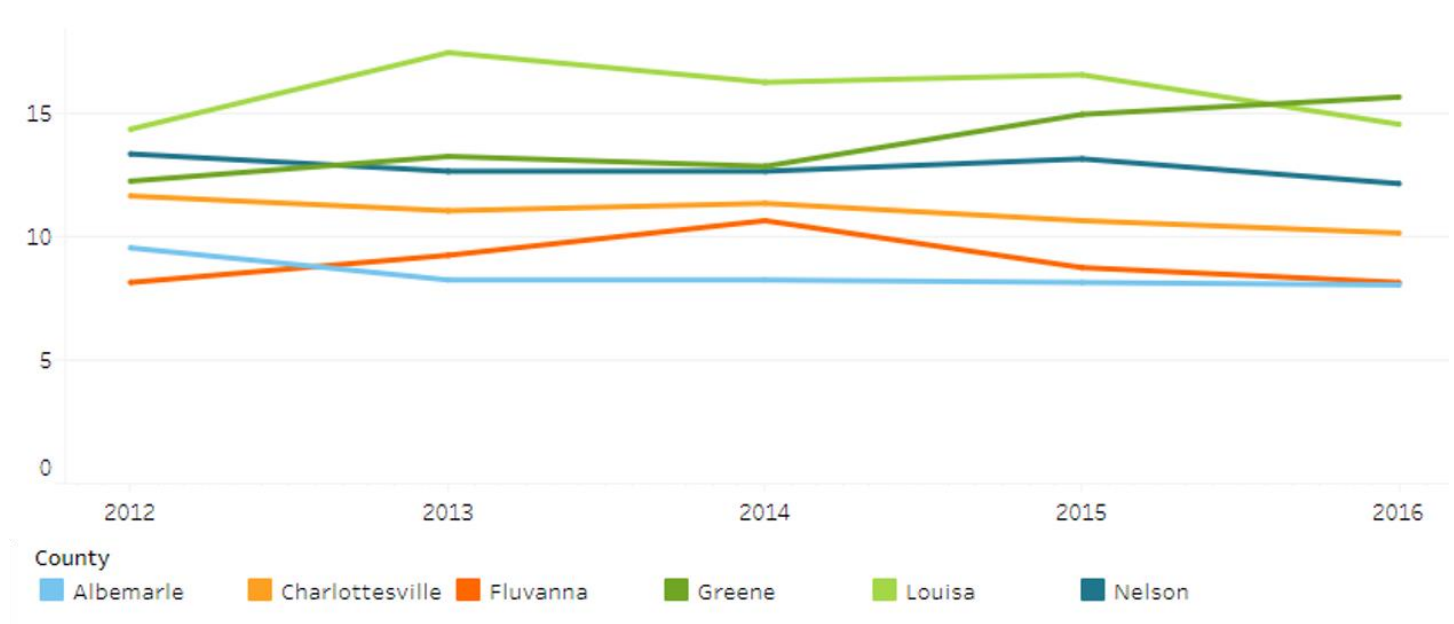


## 4.2 POVERTY STATUS OF FAMILIES BY LOCALITY



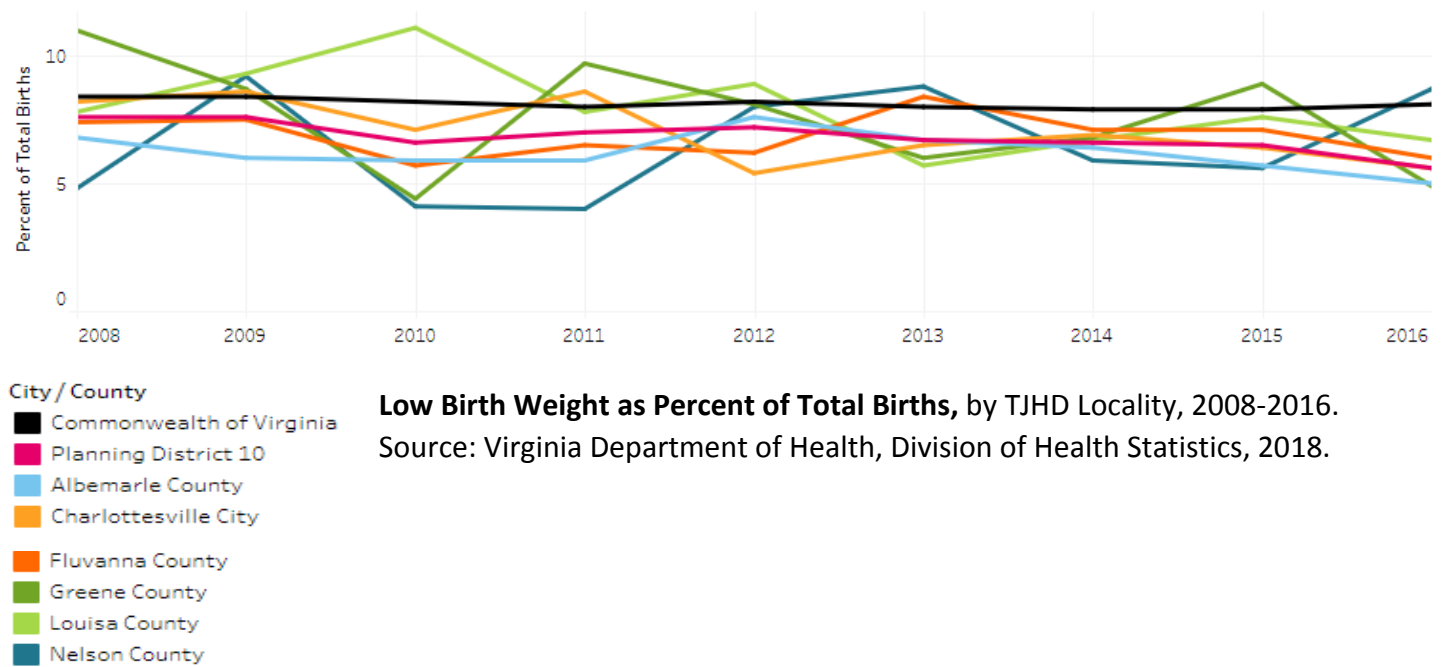
**Percent of Families below the Federal Poverty Level, by TJHD Locality, 2008-2016.** Source: U.S. Census Bureau, American Community Survey 5-year Estimates, 2018.

## 4.3 UNINSURED ADULTS BY LOCALITY

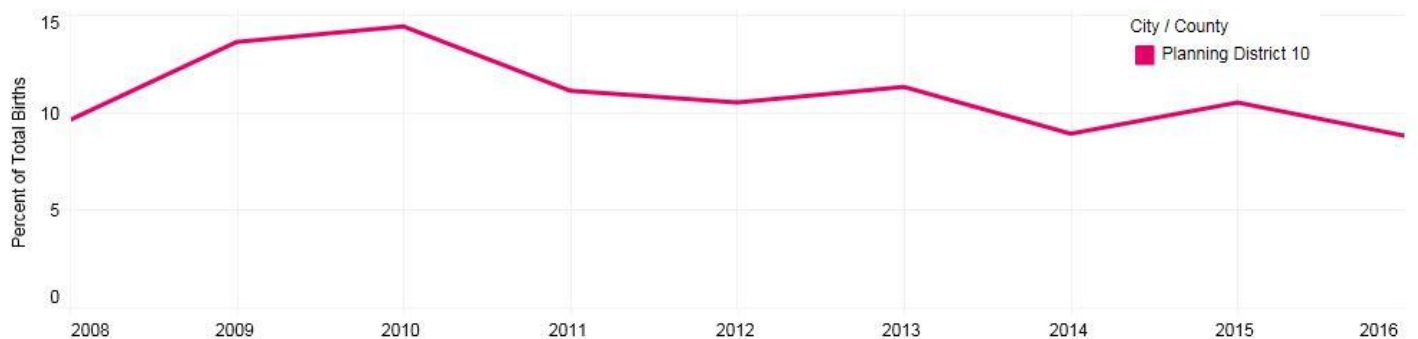


**Percent of Uninsured Adults, by TJHD Locality, 2012-2016.** Source: U.S. Census Bureau, American Community Survey 5-year Estimates, 2018.

## 4.4 LOW BIRTH WEIGHT BY LOCALITY AND RACE

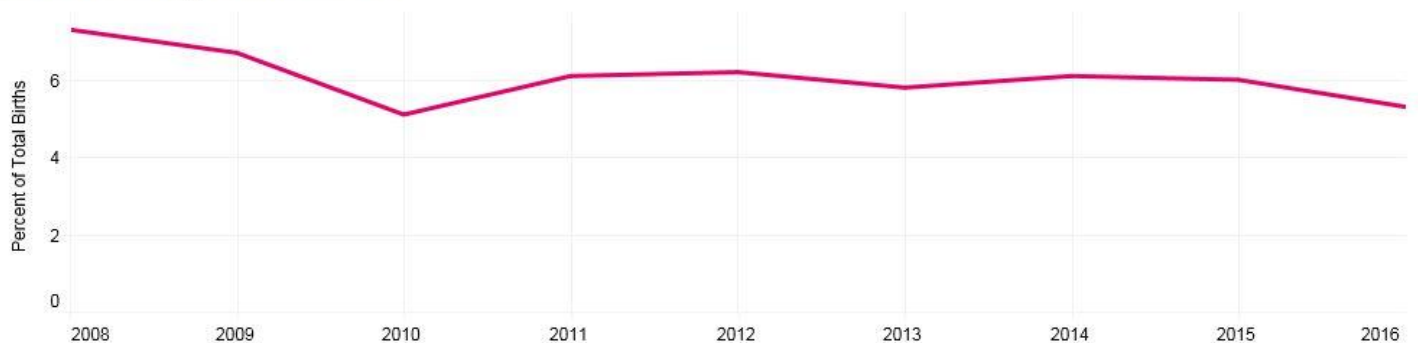


**Black Low Weight Births Chart**



**Percent Black Low Birth Weight, TJHD, 2008-2016.** Source: Virginia Department of Health, Division of Health Statistics, 2018

**White Low Weight Births Chart**

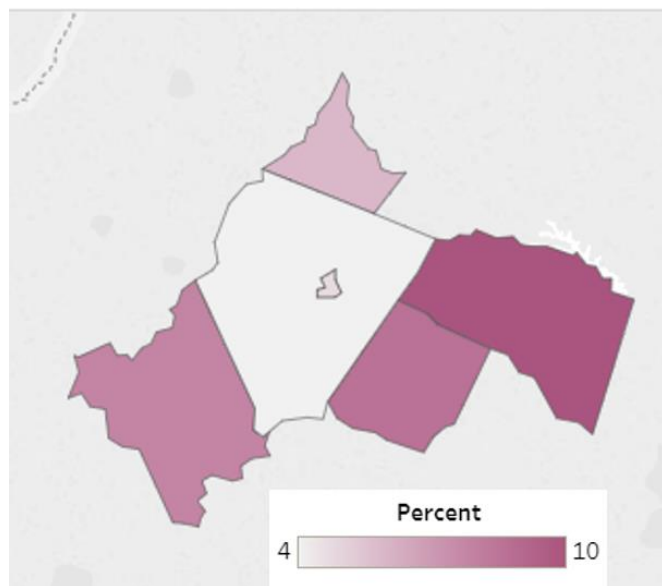


**Percent White Low Birth Weight, TJHD, 2008-2016.** Source: Virginia Department of Health, Division of Health Statistics, 2018.

#### 4.5 CHRONIC DISEASE BY LOCALITY

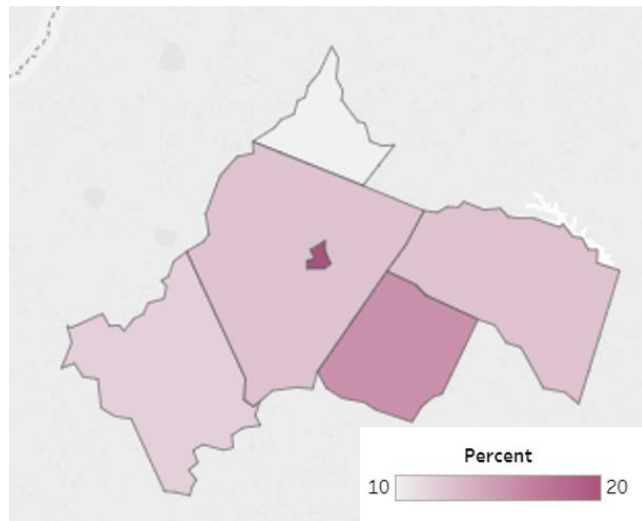
Available online at <http://www.vdh.virginia.gov/data/chronic-disease/>.

### 4.5.1 COPD



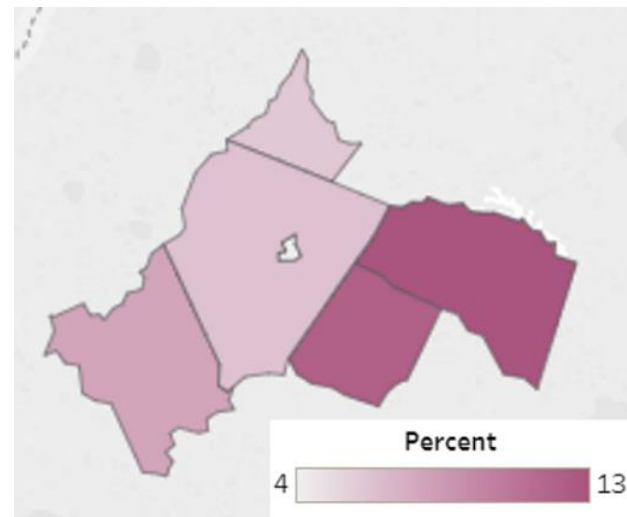
**Percent Adult Chronic Obstructive Pulmonary Disease (COPD), by TJHD Locality, 2014.** Source: Behavioral Risk Factor Surveillance Survey (BRFSS) Small Area Estimates, 2018.

### 4.5.2 Asthma



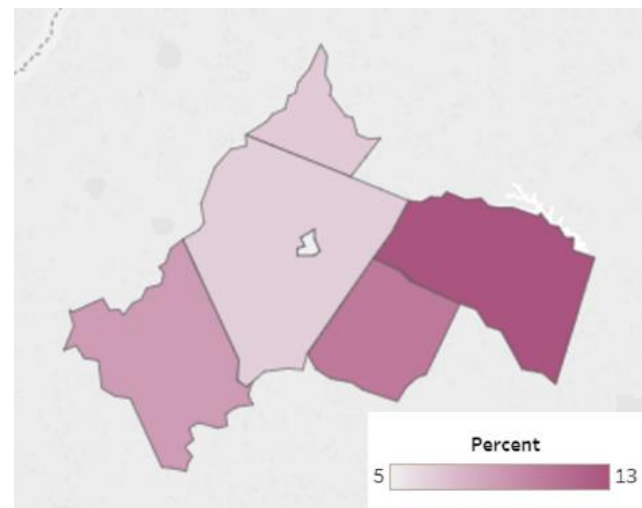
**Percent Adult Asthma**, by TJHD Locality, 2014.  
Source: Behavioral Risk Factor Surveillance Survey (BRFSS) Small Area Estimates, 2018.

### 4.5.3 Prediabetes



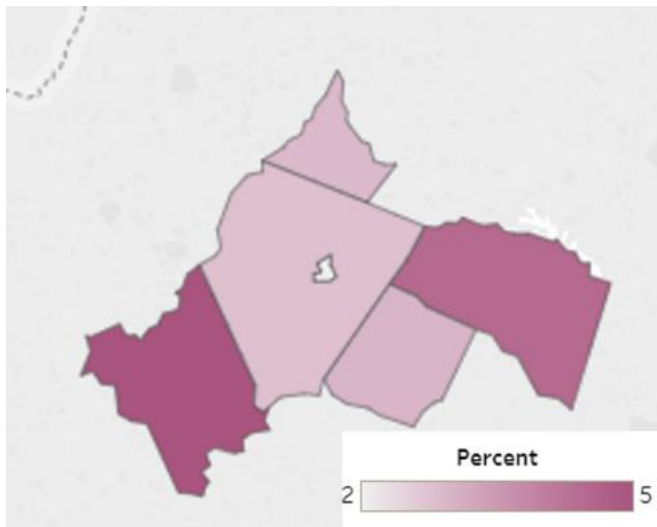
**Percent Adult Prediabetes**, by TJHD Locality, 2014.  
Source: Behavioral Risk Factor Surveillance Survey (BRFSS) Small Area Estimates, 2018.

#### 4.5.4 Diabetes



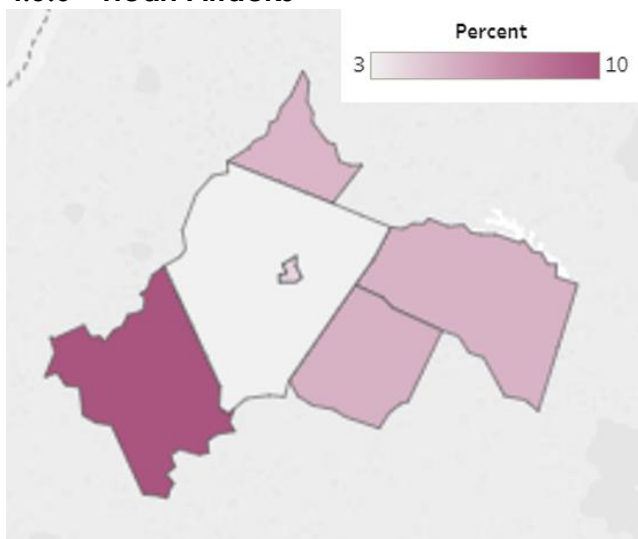
**Percent Adult Diabetes**, by TJHD Locality, 2014.  
Source: Behavioral Risk Factor Surveillance Survey (BRFSS) Small Area Estimates, 2018.

#### 4.5.5 Heart Disease



**Percent Adult Heart Disease**, by TJHD Locality, 2014. Source: Behavioral Risk Factor Surveillance Survey (BRFSS) Small Area Estimates, 2018.

#### 4.5.6 Heart Attacks



**Percent Adult Heart Attack**, by TJHD Locality, 2014. Source: Behavioral Risk Factor Surveillance Survey (BRFSS) Small Area Estimates, 2018.

## 5 MAPP PRIORITY: FOSTERING A HEALTHY AND CONNECTED COMMUNITY FOR ALL AGES

---

### 5.1 STUDENTS ELIGIBLE FOR FREE AND REDUCED LUNCH BY SCHOOL

Visit <https://public.tableau.com/profile/thomas.jefferson.health.district#!> under the “Foster a Healthy and Connected Community” dashboard to view free and reduced lunch rates by school (all elementary, middle and high schools)

### 5.2 ON-TIME GRADUATION RATES BY HIGH SCHOOL

Visit <https://public.tableau.com/profile/thomas.jefferson.health.district#!> Under the “Foster a Healthy and Connected Community” dashboard to view graduation rates by high school and a variety of demographic categories (e.g. gender, race/ethnicity, economically disadvantaged, English learners, homeless, and students with disabilities).

### 5.3 THIRD GRADE ENGLISH READING SOL PASS RATES BY SCHOOL

Visit <https://public.tableau.com/profile/thomas.jefferson.health.district#!> Under the “Foster a Healthy and Connected Community” dashboard to view pass rates by school division, school, and a variety of demographic categories (e.g. gender, race/ethnicity, economically disadvantaged, English learners, homeless, students with disabilities).

### 5.4 ADDITIONAL SCHOOL DATA

#### 5.4.1 School Membership Data

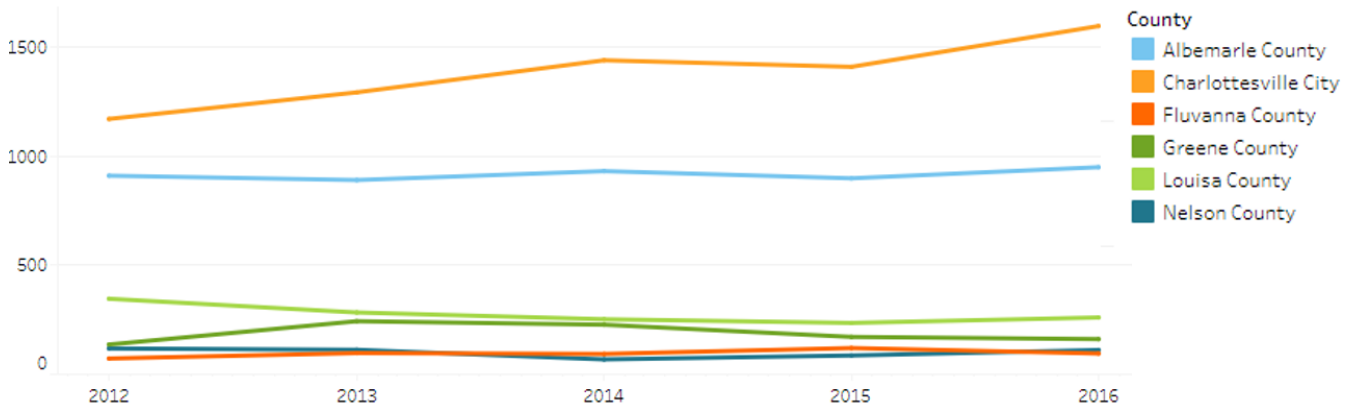
Visit <https://public.tableau.com/profile/thomas.jefferson.health.district#!> under “TJHD School Related MAPP Indicators and School Membership” to view a variety of school indicators including a map of elementary schools, school membership by race/ethnicity, grade, gender, and more.

#### 5.4.2 Suspension Rates by School

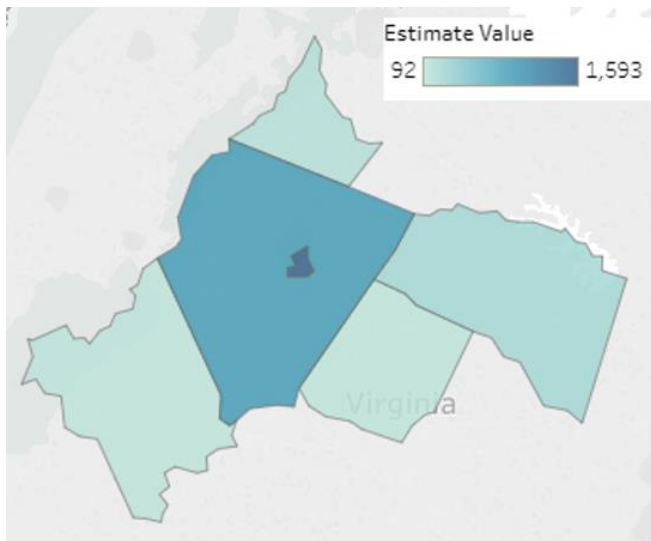
Visit <https://public.tableau.com/profile/thomas.jefferson.health.district#!> under “Thomas Jefferson Health District – School Discipline Data” to view student suspension rates by school division, school type, school, discipline type, school year, and student race/ethnicity.



## 5.5 WORKERS WITH NO VEHICLES AVAILABLE BY LOCALITY



**Workers with No Vehicle Available**, by TJHD Locality, 2012-2016. Source: U.S. Census Bureau, American Community Survey 5-year Estimates, 2018.



**Workers with No Vehicle Available**, TJHD Localities, 2012-2016. Source: U.S. Census Bureau, American Community Survey 5-year Estimates, 2018.