



REGISTRAR OF REGULATIONS

10 MAY 11 AM 10:58

COMMONWEALTH of VIRGINIA

Department of Health
DIVISION OF SHELLFISH SANITATION
109 Governor Street, Room 614-B
Richmond, VA 23219

Ph: 804-864-7487
Fax: 804-864-7481

NOTICE AND DESCRIPTION OF SHELLFISH AREA CONDEMNATION NUMBER 017-188, ANTIPOISON CREEK

EFFECTIVE 24 MAY 2010

Pursuant to Title 28.2, Chapter 8, §§28.2-803 through 28.2-808, §32.1-20, and §9-6.14:4.1, B.16 of the *Code of Virginia*:

1. The "Notice and Description of Shellfish Area Condemnation Number 017-188, Antipoison Creek," effective 23 April 2008 is cancelled effective 24 May 2010.
2. Condemned Shellfish Area Number 017-188, shown as Sections A through F, is established effective 24 May 2010. It shall be unlawful for any person, firm, or corporation to take shellfish from these areas for any purpose, except by permit granted by the Marine Resources Commission, as provided in Section 28.2-810 of the *Code of Virginia*. The boundaries of these areas are shown on the map titled "Antipoison Creek, Condemned Shellfish Area Number 017-188, 24 May 2010" which is part of this notice.
3. Seasonally Condemned Shellfish Number 017-188, shown as Section M1, is established effective 24 May 2010, and shall remain in force annually thereafter for the period beginning the first day of April through the last day of October until rescinded. It shall be unlawful for any person, firm or corporation to take shellfish from this area during such period for any purpose, except by permit granted by the Marine Resources Commission, as provided in §28.2-810 of the *Code of Virginia*. The boundaries of this area are shown on the map titled "Antipoison Creek, Condemned Shellfish Number 017-188, 24 May 2010" which is part of this notice.
4. The Department of Health will receive, consider and respond to petitions by any interested person at any time with respect to reconsideration or revision of this order.

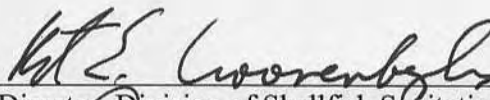
BOUNDARIES OF CONDEMNED AREA NUMBER 017-188

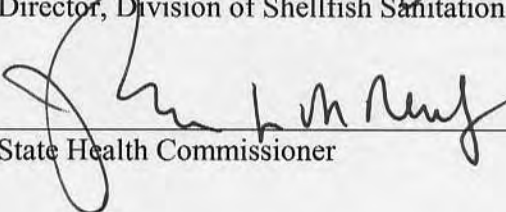
- A. The condemned area shall include all of Davenport Creek and its tributaries lying upstream of a line drawn from latitude/longitude map coordinate (37°38'37.4"; -76°20'03.2") to map coordinate (37°38'36.3", -76°20'03.5").
- B. The condemned area shall include all of the unnamed tributary found along the north bank of Antipoison Creek lying upstream of a line drawn from latitude/longitude map coordinate (37°38'01.8", -76°20'28.6") to map coordinate (37°37'59.0", -76°20'34.2").



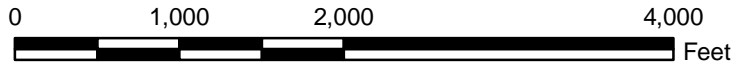
www.vdh.virginia.gov/shellfish

- C. The condemned area shall include that portion of Antipoison Creek and its tributaries lying upstream of a line drawn from latitude/longitude map coordinate (37°38'04.8", -76°21'20.8") to map coordinate (37°37'59.7", -76°21'23.3").
- D. The condemned area shall include all of the unnamed tributary found along the south bank of Antipoison Creek lying upstream of a line drawn from latitude/longitude map coordinate (37°37'45.2", -76°20'36.0") to map coordinate (37°37'46.3", -76°20'31.7").
- E. The condemned area shall include all of Harpers Creek and its tributaries lying upstream of a line drawn from latitude/longitude map coordinate (37°37'44.2", -76°21'01.3") to map coordinate (37°37'42.1", -76°20'57.5").
- F. The condemned area shall include all of an unnamed cove found along the north bank of Antipoison Creek lying upstream of a line drawn from latitude/longitude map coordinate (37°37'51.1", -76°20'46.6") to map coordinate (37°37'52.6", -76°20'52.5").
- M1. The seasonally condemned area shall include that portion of Antipoison Creek and its tributaries lying inland of a line drawn from latitude/longitude map coordinate (37°37'43.4", -76°20'53.8"), map coordinate (37°37'45.6", -76°20'47.5") and map coordinate (37°37'43.6", -76°20'41.4").

Recommended by: 
Director, Division of Shellfish Sanitation

Ordered by:  5/10/10
State Health Commissioner Date

**Virginia Department of Health
Antipoison Creek
Condemned Shellfish Area Number 017-188
24 May 2010**



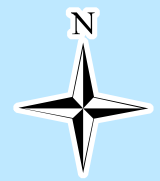
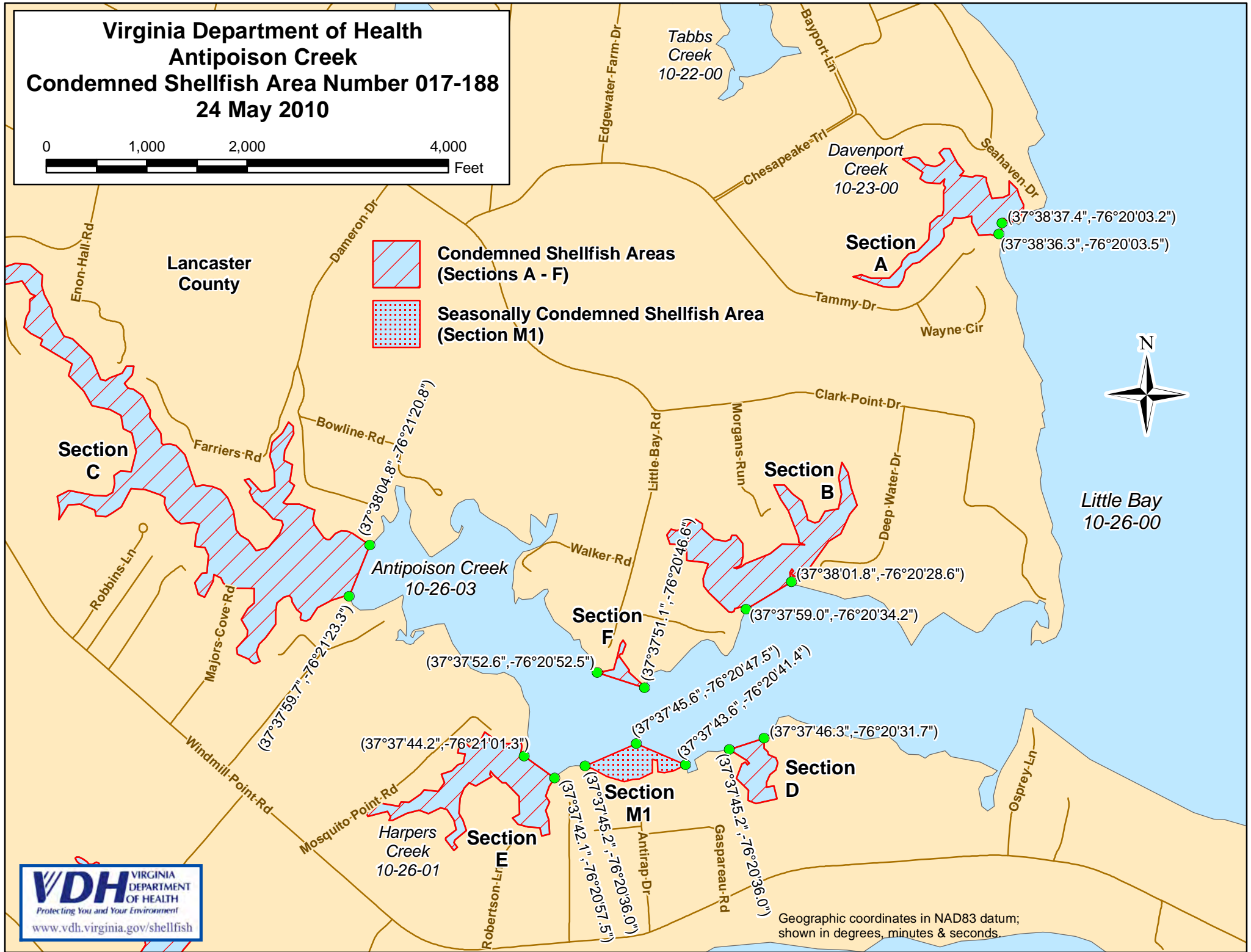
Lancaster County



**Condemned Shellfish Areas
(Sections A - F)**



**Seasonally Condemned Shellfish Area
(Section M1)**



Little Bay
10-26-00

Geographic coordinates in NAD83 datum;
shown in degrees, minutes & seconds.