



REGISTRAR OF REGULATIONS

10 JUL 14 AM 11:08

COMMONWEALTH of VIRGINIA

Department of Health
DIVISION OF SHELLFISH SANITATION
109 Governor Street, Room 614-B
Richmond, VA 23219

Ph: 804-864-7487
Fax: 804-864-7481

NOTICE AND DESCRIPTION OF SHELLFISH AREA CONDEMNATION NUMBER 031-102, LOCKLIES AND MILL CREEKS

EFFECTIVE 27 JULY 2010

Pursuant to Title 28.2, Chapter 8, §§28.2-803 through 28.2-808, §32.1-20, and §2.2-4002, B.16 of the *Code of Virginia*:

1. The "Notice and Description of Shellfish Area Condemnation Number 031-102, Locklies and Mill Creeks," effective 16 July 2009, is cancelled effective 27 July 2010.
2. Condemned Shellfish Area Number 031-102, shown as Sections A and B, is established effective 27 July 2010. It shall be unlawful for any person, firm, or corporation to take shellfish from these areas for any purpose, except by permit granted by the Marine Resources Commission, as provided in Section 28.2-810 of the *Code of Virginia*. The boundaries of these areas are shown on the map titled "Locklies and Mill Creeks, Condemned Shellfish Area Number 031-102, 27 July 2010" which is part of this notice.
3. Seasonally Condemned Shellfish Area Number 031-102, shown as Section M1, is established effective 27 July 2010, and shall remain in force annually thereafter for the period beginning the first day of April through the last day of October until rescinded. It shall be unlawful for any person, firm, or corporation to take shellfish from this area during such period for any purpose, except by permit granted by the Marine Resources Commission, as provided in §28.2-810 of the *Code of Virginia*. The boundaries of this area are shown on the map titled "Locklies and Mill Creeks, Condemned Shellfish Area Number 031-102, 27 July 2010" which is part of this notice.
4. The Department of Health will receive, consider and respond to petitions by any interested person at any time with respect to reconsideration or revision of this order.

BOUNDARIES OF CONDEMNED AREA NUMBER 031-102

- A. The condemned area shall include that portion of Mill Creek and its tributaries upstream of a line drawn between latitude/longitude map coordinate (37°35'10.9", -76°25'48.5") and (37°35'03.9", -76°25'48.6").
- B. The condemned area shall include that portion of Locklies Creek and its tributaries upstream of a line drawn between latitude/longitude map coordinate (37°35'31.5", -76°26'11.5") and (37°35'28.9", -76°26'14.7").

VDH VIRGINIA
DEPARTMENT
OF HEALTH
Protecting You and Your Environment

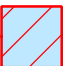
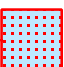
www.vdh.virginia.gov/shellfish

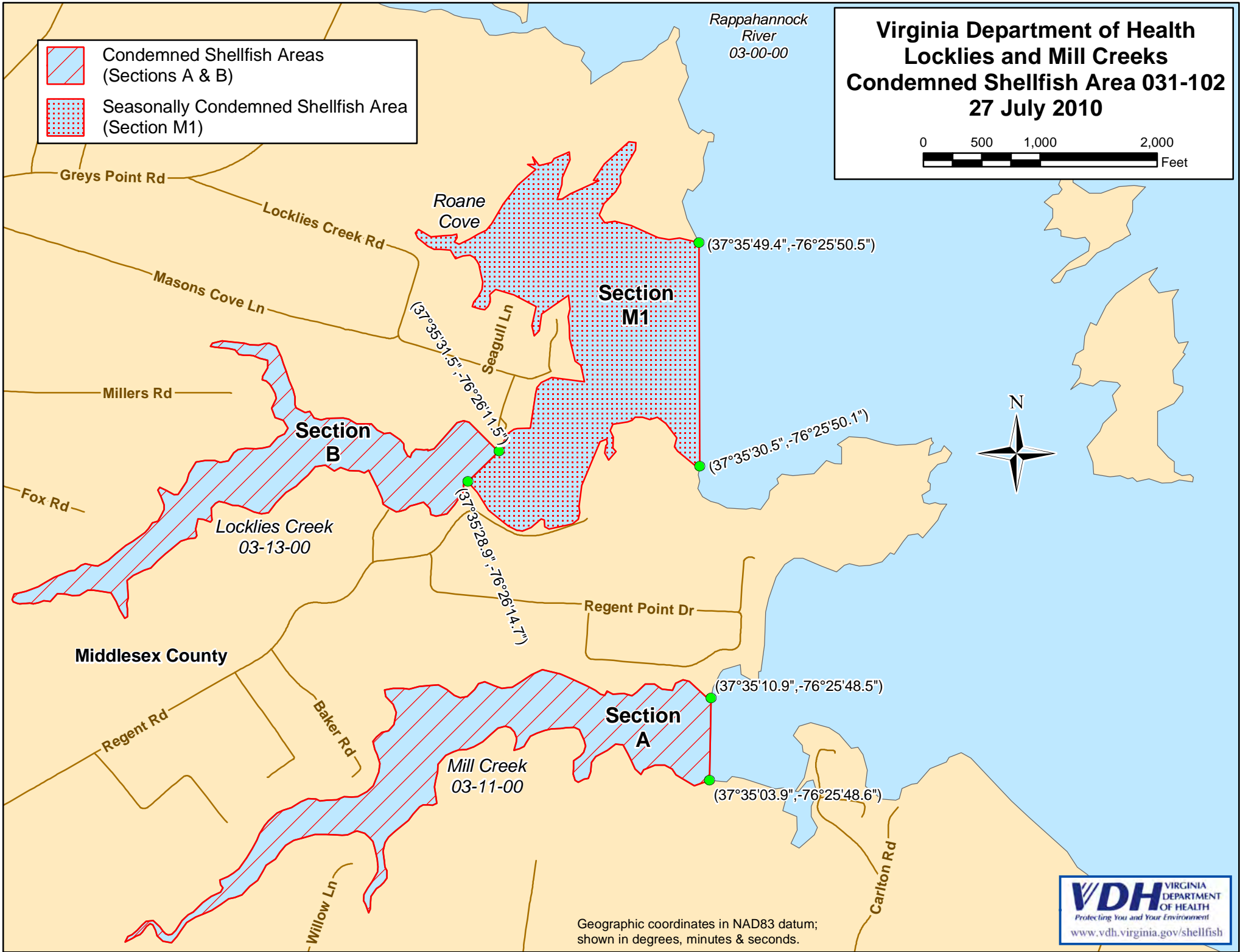
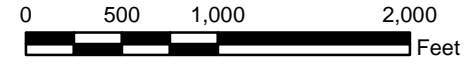
M1. The seasonally condemned area shall include all of Roane Cove and that portion of Locklies Creek upstream of a line drawn between latitude/longitude map coordinate (37°35'49.4", -76°25'50.5") and (37°35'30.5", -76°25'50.1"); but excluding the area defined as Section B.

Recommended by: *M. E. Wonerby*
Director, Division of Shellfish Sanitation

Ordered by: *Karen Spauldy* *7/13/10*
State Health Commissioner Date

Virginia Department of Health
Locklies and Mill Creeks
Condemned Shellfish Area 031-102
27 July 2010

-  Condemned Shellfish Areas (Sections A & B)
-  Seasonally Condemned Shellfish Area (Section M1)



Geographic coordinates in NAD83 datum; shown in degrees, minutes & seconds.