



REGISTRAR OF REGULATIONS
11 AUG 11 PM 12:39

COMMONWEALTH of VIRGINIA

Department of Health
DIVISION OF SHELLFISH SANITATION
109 Governor Street, Room 614-B
Richmond, VA 23219

Ph: 804-864-7487
Fax: 804-864-7481

NOTICE AND DESCRIPTION OF SHELLFISH AREA CONDEMNATION NUMBER 034-126, WILTON AND COBBS CREEKS

EFFECTIVE 23 AUGUST 2011

Pursuant to Title 28.2, Chapter 8, §§28.2-803 through 28.2-808, §32.1-20, and §2.2-4002, B.16 of the *Code of Virginia*:

1. The "Notice and Description of Shellfish Area Condemnation Number 034-126, Wilton and Cobbs Creeks," effective 24 August 2010, is cancelled effective 23 August 2011.
2. Condemned Shellfish Area Number 034-126, shown as Section A is established effective 23 August 2011. It shall be unlawful for any person, firm, or corporation to take shellfish from this area for any purpose, except by permit granted by the Marine Resources Commission, as provided in Section §28.2-810 of the *Code of Virginia*. The boundaries of this area are shown on the map titled "Wilton and Cobbs Creeks, Condemned Shellfish Area Number 034-126, 23 August 2011" which is a part of this notice.
3. Seasonally Condemned Shellfish Area Number 034-126, shown as Sections M1 and M2 is established effective 23 August 2011, and shall remain in force annually thereafter for the period beginning the first day of April through the last day of October until rescinded. It shall be unlawful for any person, firm, or corporation to take shellfish from these areas during such period for any purpose, except by permit granted by Marine Resources Commission, as provided in §28.2-810 of the *Code of Virginia*. The boundaries of these areas are shown on the map titled "Wilton and Cobbs Creeks, Condemned Shellfish Area Number 034-126, 23 August 2011 which is part of this notice.
4. The Department of Health will receive, consider and respond to petitions by any interested person at any time with respect to reconsideration or revision of this order.

BOUNDARIES OF CONDEMNED AREA NUMBER 034-126


- A. The condemned area shall include that portion of Wilton Creek and its tributaries upstream of a line drawn between latitude / longitude map coordinate (37°31'28.6", -76°25'00.8") and map coordinate (37°31'27.4", -76°24'55.3").

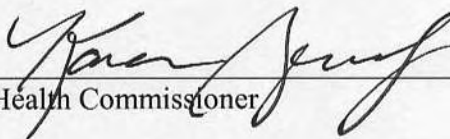


Protecting You and Your Environment

www.vdh.virginia.gov/shellfish


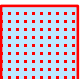
- M1. The seasonally condemned area shall include all of the unnamed tributary of Cobbs Creek upstream of a line drawn between latitude / longitude map coordinate (37°31'29.0", -76°24'06.1") and map coordinate (37°31'31.5", -76°24'10.2").
- M2. The seasonally condemned area shall include that portion of Cobbs Creek inland of a line drawn between latitude / longitude map coordinate (37°31'24.2", -76°24'02.5"), map coordinate (37°31'22.6", -76°23'57.3"), map coordinate (37°31'17.8", -76°23'58.5"), and map coordinate (37°31'18.1", -76°24'05.3").

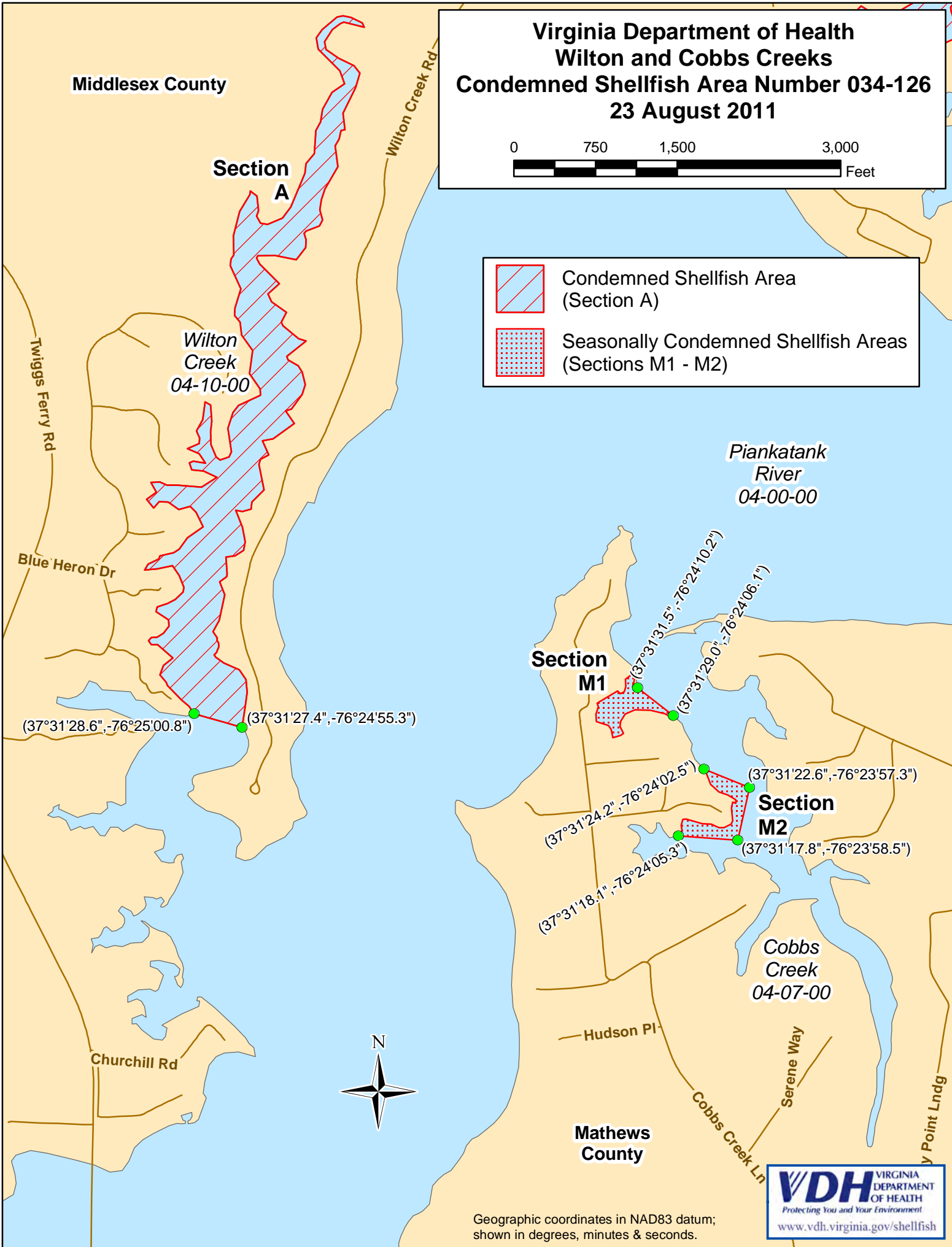
Recommended by: 
Director, Division of Shellfish Sanitation

Ordered by:  8/26
State Health Commissioner Date

**Virginia Department of Health
Wilton and Cobbs Creeks
Condemned Shellfish Area Number 034-126
23 August 2011**



-  Condemned Shellfish Area (Section A)
-  Seasonally Condemned Shellfish Areas (Sections M1 - M2)



Geographic coordinates in NAD83 datum; shown in degrees, minutes & seconds.