



COMMONWEALTH of VIRGINIA

Department of Health
DIVISION OF SHELLFISH SANITATION
109 Governor Street, Room 614-B
Richmond, VA 23219

REGISTRATION BY REGULATIONS
10 JAN 13 AM 11:15

Ph: 804-864-7487
Fax: 804-864-7481

NOTICE AND DESCRIPTION OF SHELLFISH AREA CONDEMNATION NUMBER 037-099, QUEENS AND LANES CREEKS

EFFECTIVE 28 JANUARY 2010

Pursuant to Title 28.2, Chapter 8, §§28.2-803 through 28.2-808, §32.1-20, and §2.2-4002, B.16 of the *Code of Virginia*:

1. The "Notice of Establishment and Description of Condemned Shellfish Area Number 037-099, Queens and Lanes Creeks," effective 29 January 2008, is cancelled effective 28 January 2010.
2. Condemned Shellfish Area Number 037-099, shown as Sections A through E, is established effective 28 January 2010. It shall be unlawful for any person, firm, or corporation to take shellfish from these areas for any purpose, except by permit granted by the Marine Resources Commission, as provided in § 28.2-810 of the *Code of Virginia*. The boundaries of these areas are shown on the map titled "Queens and Lanes Creek, Condemned Shellfish Area Number 037-099, 28 January 2010" which is part of this notice.
3. Seasonally Condemned Shellfish Area Number 037-099, shown as Section M1, is established, effective 1 April 2010, and shall remain in force annually thereafter for the period beginning the first day of April through the last day of October until rescinded. It shall be unlawful for any person, firm, or corporation to take shellfish from this area during such period for any purpose, except by permit granted by the Marine Resources Commission, as provided in §28.2-810 of the *Code of Virginia*. The boundaries of this area are shown on the map titled "Queens and Lanes Creek, Condemned Shellfish Number 037-099, 28 January 2010" which is part of this notice.
4. The Department of Health will receive, consider and respond to petitions by any interested person at any time with respect to reconsideration or revision of this order.

BOUNDARIES OF CONDEMNED AREA NUMBER 037-99


- A. The condemned area shall include that portion of Queens Creek and its tributaries lying upstream of a line drawn from latitude/longitude map coordinate (37°29'13.7", -76°20'25.7") and map coordinate (37°29'04.1", -76°20'24.6").
- B. The condemned area shall include all of the unnamed tributary of Lanes Creek lying upstream of a line drawn from latitude/longitude map coordinate (37°28'59.4", -76°18'16.2") and map coordinate (37°28'58.4", -76°18'16.6").

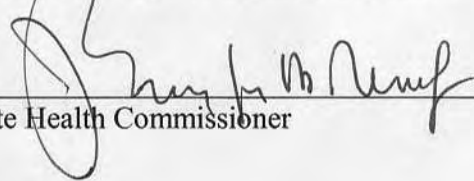


Protecting You and Your Environment

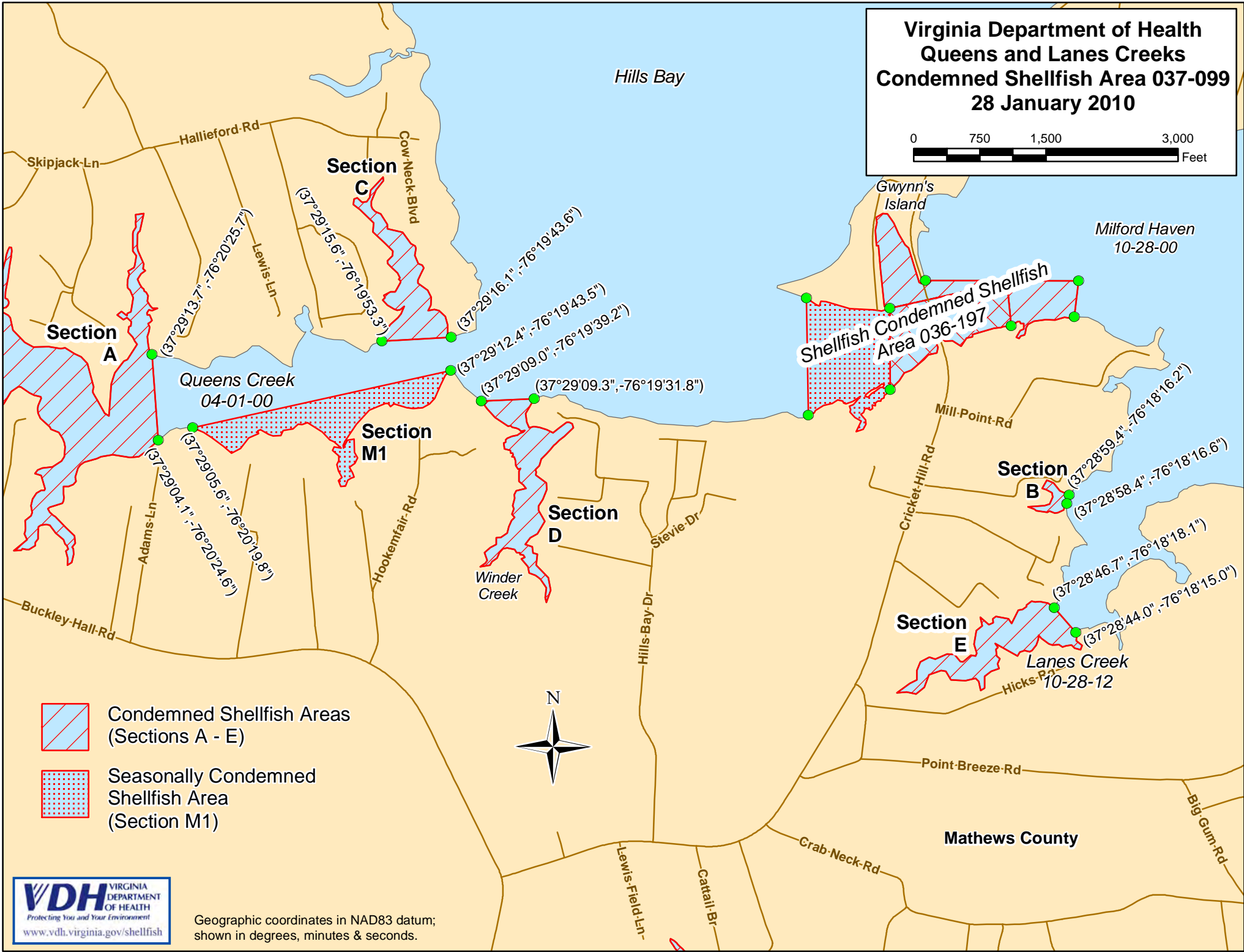
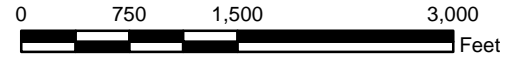
www.vdh.virginia.gov/shellfish

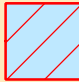
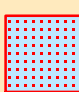
- C. The condemned area shall include all of the unnamed tributary of Queens Creek lying upstream of a line drawn from latitude/longitude map coordinate (37°29'15.6", -76°19'53.3") and map coordinate (37°29'16.1", -76°19'43.6").
- D. The condemned area shall include all of Winder Creek and its tributaries lying upstream of a line drawn from latitude/longitude map coordinate (37°29'09.0", -76°19'39.2") and map coordinate (37°29'09.3", -76°19'31.8").
- E. The condemned area shall include that portion of Stutts Creek and its tributaries lying upstream of a line drawn from latitude/longitude map coordinate (37°28'46.7", -76°18'18.1") and map coordinate (37°28'44.0", -76°18'15.0").
- M1. The seasonally condemned area shall include that portion of Queens Creek lying inland of a line drawn from latitude/longitude map coordinate (37°29'12.4", -76°19'43.5") and map coordinate (37°29'05.6", -76°20'19.8").

Recommended by: 
Director, Division of Shellfish Sanitation

Ordered by:  1/12/10
State Health Commissioner Date

**Virginia Department of Health
Queens and Lanes Creeks
Condemned Shellfish Area 037-099
28 January 2010**



-  Condemned Shellfish Areas (Sections A - E)
-  Seasonally Condemned Shellfish Area (Section M1)

